

# kirei EchoTile Geometry Pattern Installation Guide

[Home](#) » [kirei](#) » kirei EchoTile Geometry Pattern Installation Guide 

kirei EchoTile Geometry Pattern Installation Guide



## Contents

- 1 EchoTile Geometry–Delta Installation Guide
  - 1.1 Installation
- 2 EchoTile Geometry–Oblong Installation Guide
  - 2.1 Installation
- 3 EchoTile Geometry–Square Installation Guide
- 4 EchoTile Geometry Bend Installation Guide
  - 4.1 Installation
- 5 EchoTile Geometry Spiral Installation Guide
  - 5.1 Installation
- 6 EchoTile Geometry Angle Installation Guide
  - 6.1 Installation
- 7 EchoTile Geometry Maximal Installation Guide
  - 7.1 Installation
- 8 EchoTile Geometry Block Installation Guide
  - 8.1 Installation
- 9 EchoTile Geometry Invader Installation Guide
  - 9.1 Installation
- 10 Documents / Resources
- 11 Related Posts

## EchoTile Geometry–Delta Installation Guide

### What's included in a box:

- 20 Delta Tiles
- 1 bag of 70 adhesive tabs

### Tools needed (not included):

- Level
- Measuring Tape
- Pencil

**Notes:** Adhesive tabs may pull finish or paint off of the wall when removed. It is not recommended to use adhesive tabs on wood, brick, or other textured surfaces. Construction adhesive is recommended for installation on textured surfaces, ceilings, and high traffic areas. Adhesive tabs are not reusable. If a tile was placed incorrectly, re-apply the tile to the surface using a new set of adhesive tabs.

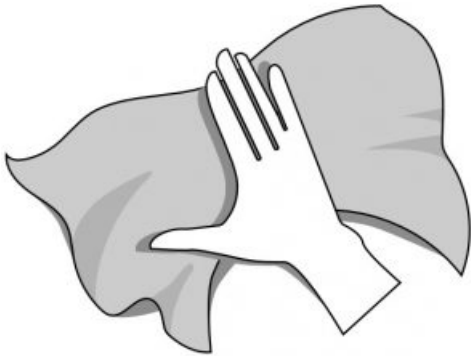
Tiles are cut on a grain and can reflect light differently, looking slightly lighter or darker depending on placement. When applying the tiles, ensure the color of the tiles complements your light source. Rotate the tile if color varies from the adjacent tile.

### Installation

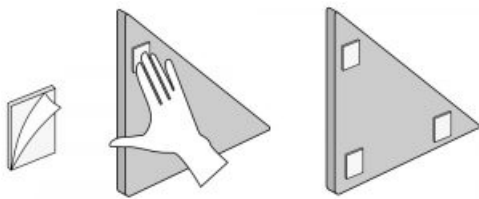
Delta Tiles require (3) 1"x1" adhesive tabs per tile for proper mounting and installation. Easy peel tabs have the same amount of adhesive on each side and will adhere to painted surfaces, dry wall, or smooth cement. Order extra adhesive tabs at [www.store.kireiusa.com](http://www.store.kireiusa.com).

## How to apply easy peel adhesive tabs:

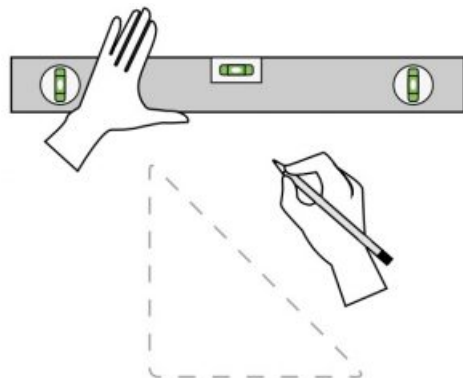
1. Clean the wall surface of application by wiping with a damp cloth or wet rag. Do not apply tiles to the surface until it is completely dry.



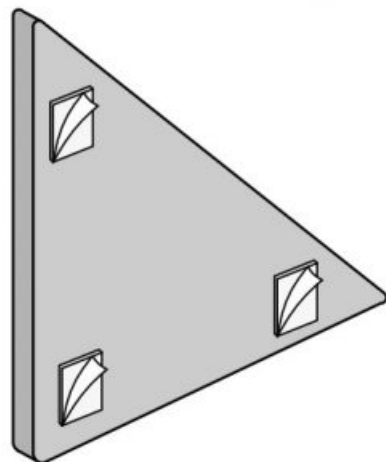
2. Peel off one side of the adhesive tab. Place tab on tile and press firmly for 20 seconds. Repeat this step for all designated tab placements, as shown on the tile above.



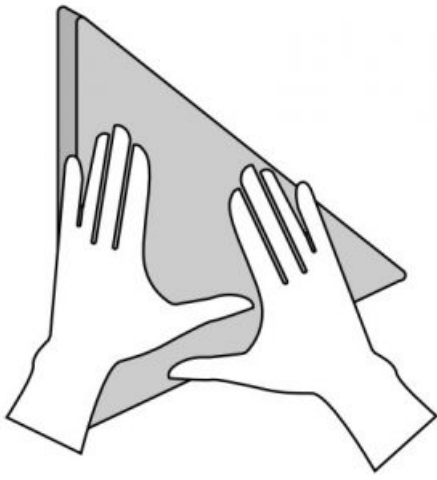
3. Use a level to align the first tile, and mark the wall.



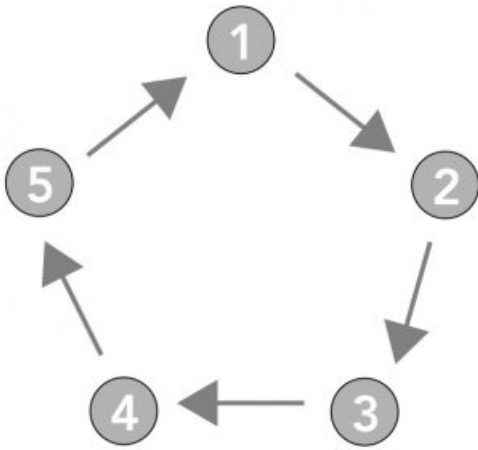
4. Peel off the other side of the adhesive tabs



5. Repeat steps 1-5 for all tiles. Ensure that each tile properly aligns with previous tiles.



6. Repeat steps 1-5 for all tiles. Ensure that each tile properly aligns with previous tiles.



## EchoTile Geometry–Oblong Installation Guide

### What's included in a box:

- 20 Oblong Tiles
- 1 bag of 70 adhesive tabs

### Tools needed (not included):

- Level
- Measuring Tape
- Pencil

**Notes:** Adhesive tabs may pull finish or paint off of the wall when removed. It is not recommended to use adhesive tabs on wood, brick, or other textured surfaces. Construction adhesive is recommended for installation on textured surfaces, ceilings, and high traffic areas. Adhesive tabs are not reusable. If a tile was placed incorrectly, re-apply the tile to the surface using a new set of adhesive tabs.

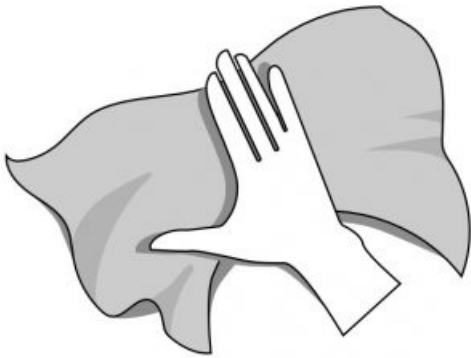
Tiles are cut on a grain and can reflect light differently, looking slightly lighter or darker depending on placement. When applying the tiles, ensure the color of the tiles complements your light source. Rotate the tile if color varies from the adjacent tile.

### Installation

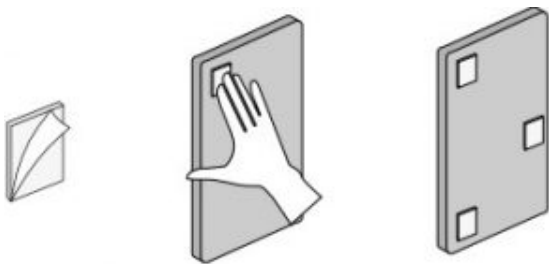
Oblong Tiles require (3) 1"x1" adhesive tabs per tile for proper mounting and installation. Easy peel tabs have the same amount of adhesive on each side and will adhere to painted surfaces, dry wall, or smooth cement. Order extra adhesive tabs at [www.store.kireiusa.com](http://www.store.kireiusa.com)

**.How to apply easy peel adhesive tabs:**

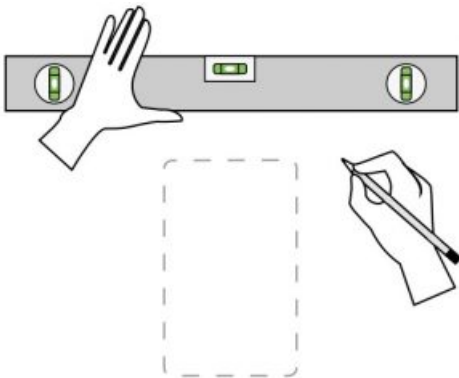
1. Clean the wall surface of application by wiping with a damp cloth or wet rag. Do not apply tiles to the surface until it is completely dry



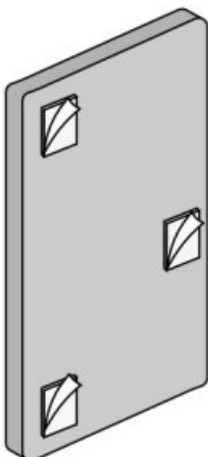
2. Peel off one side of the adhesive tab. Place tab on tile and press firmly for 20 seconds. Repeat this step for all designated tab placements, as shown on the tile above.



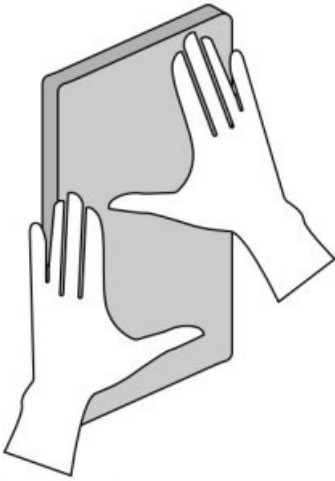
3. Use a level to align the first tile, and mark the wall.



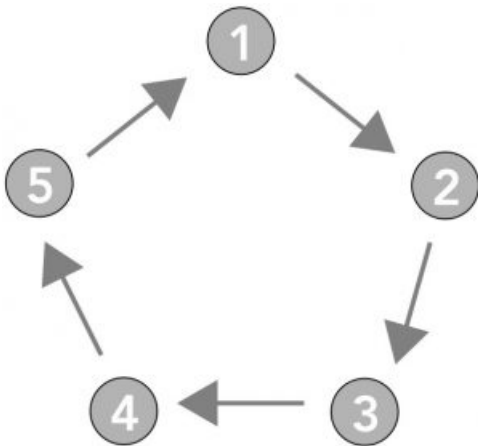
4. Peel off the other side of the adhesive tabs.



5. Press the tile firmly to the wall surface for 20 seconds. It is very important that the first tile is placed correctly.



6. Repeat steps 1-5 for all tiles. Ensure that each tile properly aligns with previous tiles.



## EchoTile Geometry–Square Installation Guide

### What's included in a box:

- 10 Square Tiles
- 1 bag of 50 adhesive tabs

### Tools needed (not included):

- Level
- Measuring Tape
- Pencil

**Notes:** Adhesive tabs may pull finish or paint off of the wall when removed. It is not recommended to use adhesive tabs on wood, brick, or other textured surfaces.

Construction adhesive is recommended for installation on textured surfaces, ceilings, and high traffic areas.

Adhesive tabs are not reusable. If a tile was placed incorrectly, re-apply the tile to the surface using a new set of adhesive tabs.

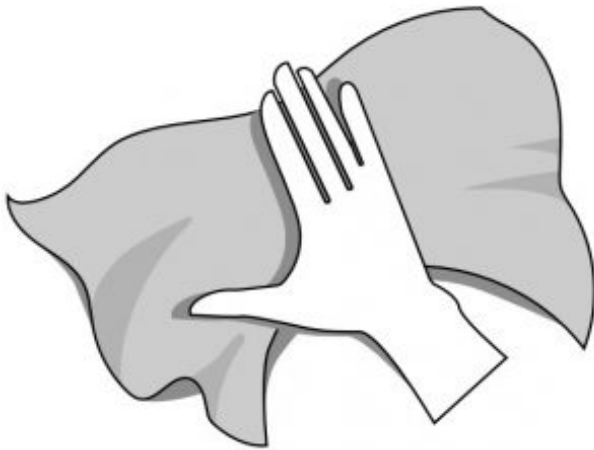
Tiles are cut on a grain and can reflect light differently, looking slightly lighter or darker depending on placement. When applying the tiles, ensure the color of the tiles complements your light source. Rotate the tile if color varies from the adjacent tile.

### Installation

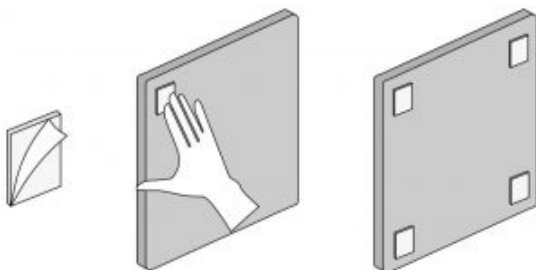
Square Tiles require (4) 1"x1" adhesive tabs per tile for proper mounting and installation. Easy peel tabs have the same amount of adhesive on each side and will adhere to painted surfaces, dry wall, or smooth cement. Order extra adhesive tabs at [www.store.kireiusa.com](http://www.store.kireiusa.com).

#### How to apply easy peel adhesive tabs:

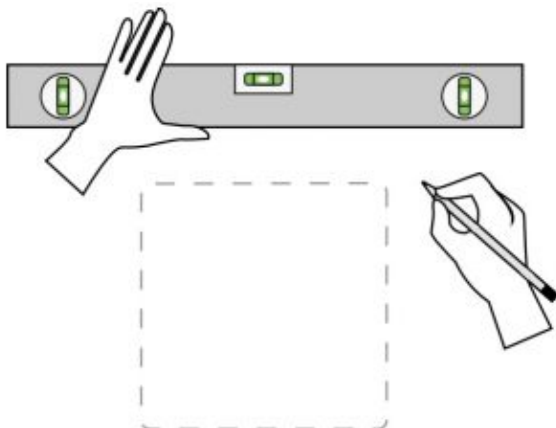
1. Clean the wall surface of application by wiping with a damp cloth or wet rag. Do not apply tiles to the surface until it is completely dry



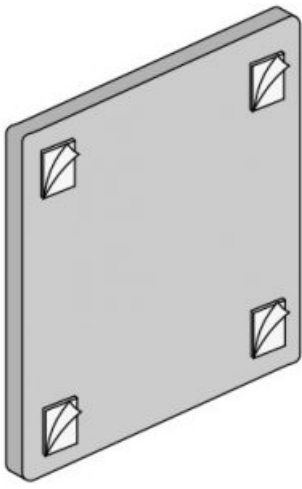
2. Peel off one side of the adhesive tab. Place tab on tile and press firmly for 20 seconds. Repeat this step for all designated tab placements, as shown on the tile above.



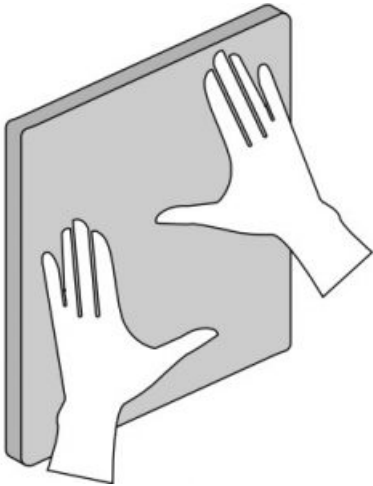
3. Use a level to align the first tile, and mark the wall.



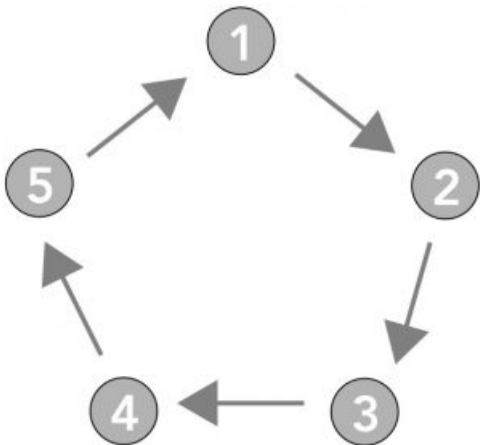
4. Peel off the other side of the adhesive tabs.



5. Press the tile firmly to the wall surface for 20 seconds. It is very important that the first tile is placed correctly.



6. Repeat steps 1-5 for all tiles. Ensure that each tile properly aligns with previous tiles.



## EchoTile Geometry Bend Installation Guide

### What's included in a box:

- **Opt 1)** 40 Oblong Speckled Gray  
40 Oblong Pacific
- **Opt 2)** 40 Oblong Pacific  
40 Oblong Wine
- **Opt 3)** 40 Oblong Pacific



40 Oblong Navy

4 bags of 70 adhesive tabs

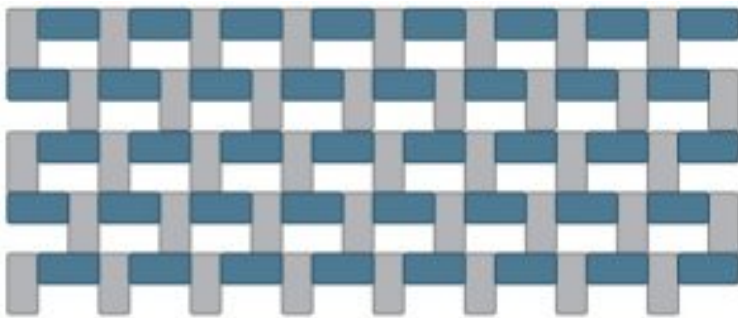
**Tools needed (not included):**

- Level
- Measuring Tape
- Pencil

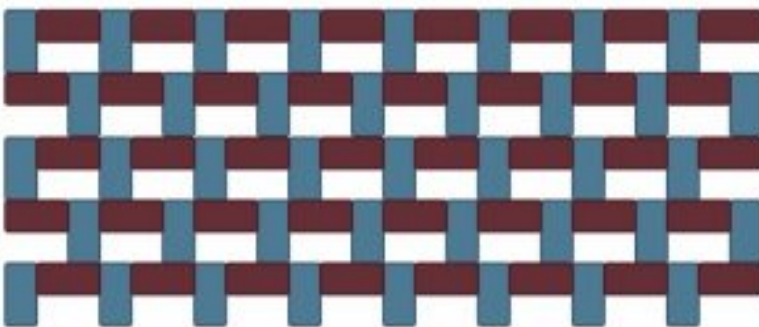
**Notes:** Adhesive tabs may pull finish or paint off of the wall when removed. It is not recommended to use adhesive tabs on wood, brick, or other textured surfaces. Construction adhesive is recommended for installation on textured surfaces, ceilings, and high traffic areas. Adhesive tabs are not reusable. If a tile was placed incorrectly, re-apply the tile to the surface using a new set of adhesive tabs.

Tiles are cut on a grain and can reflect light differently, looking slightly lighter or darker depending on placement. When applying the tiles, ensure the color of the tiles complements your light source. Rotate the tile if color varies from the adjacent tile.

- **Option 1:** Geo Cool Serenity | Speckled Gray and Pacific



- **Option 2:** Geo Iron & Wine | Pacific and Wine



- **Option 3:** Geo Cool Serenity | Pacific and Navy



**Installation**

Oblong Tiles require (3) 1"x1" adhesive tabs per tile for proper mounting and installation. Easy peel tabs have the same amount of adhesive on each side and will adhere to painted surfaces, dry wall, or smooth cement. Patterns are made to be repeatable. If more tiles are desired visit us at [www.store.kireiusa.com](http://www.store.kireiusa.com) to purchase another pattern bundle or extra adhesive tabs.

### **How to apply adhesive tabs and install tiles:**

1. Clean the wall surface of application by wiping with a damp cloth or wet rag. Do not apply tiles to the surface until it is completely dry.
2. Peel off one side of the adhesive tab. Place tab on tile and press firmly for 20 seconds. Repeat this step for all designated tab placements.
3. Measure out and mark all pattern edges on the wall for desired placement. Use a level to align the first tile.
4. Begin installing with the bottom left corner of the pattern and work your way up and right.
5. Peel off the other side of the adhesive tabs.
6. Press the tile firmly to the wall surface for 20 seconds. It is very important that the first tile is placed correctly.
7. Repeat steps 1-5 for all tiles. Ensure that each tile properly aligns with previous tiles.

### **EchoTile Geometry Spiral Installation Guide**

#### **What's included in a box:**

- **Opt 1)** 40 Oblong Pacific  
40 Oblong Navy
- **Opt 2)** 40 Oblong Pacific  
40 Oblong Wine
- **Opt 3)** 40 Oblong Mushroom  
40 Oblong Navy
- 4 bags of 70 adhesive tabs

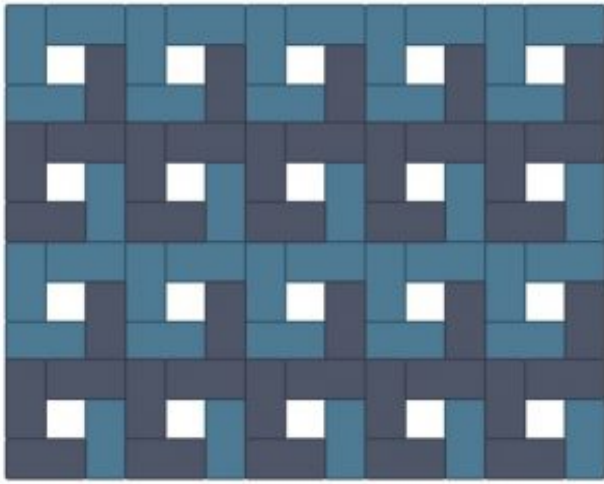
#### **Tools needed (not included):**

- Level
- Measuring Tape
- Pencil

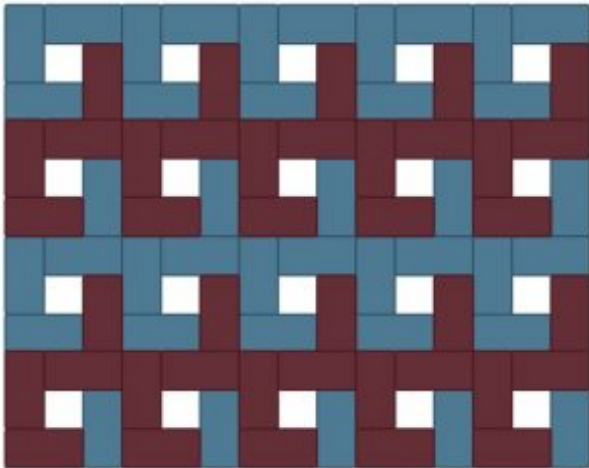
**Notes:** Adhesive tabs may pull finish or paint off of the wall when removed. It is not recommended to use adhesive tabs on wood, brick, or other textured surfaces. Construction adhesive is recommended for installation on textured surfaces, ceilings, and high traffic areas. Adhesive tabs are not reusable. If a tile was placed incorrectly, re-apply the tile to the surface using a new set of adhesive tabs.

Tiles are cut on a grain and can reflect light differently, looking slightly lighter or darker depending on placement. When applying the tiles, ensure the color of the tiles complements your light source. Rotate the tile if color varies from the adjacent tile.

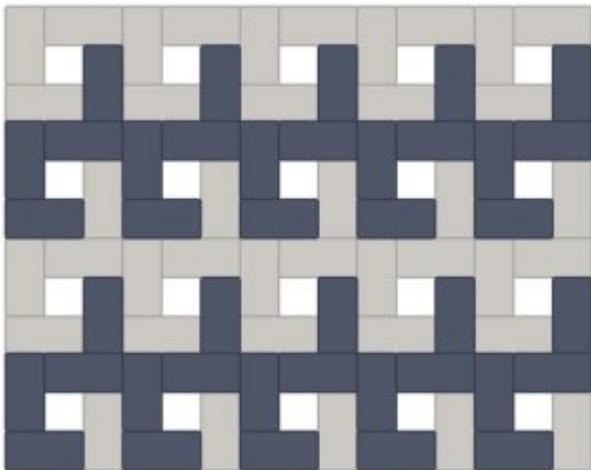
- **Option 1:** Geo Cool Serenity | Pacific and Navy



- **Option 2:** Geo Iron & Wine | Pacific and Wine



- **Option 3:** Geo Cool Serenity | Mushroom and Navy



## Installation

Oblong Tiles require (3) 1"x1" adhesive tabs per tile for proper mounting and installation. Easy peel tabs have the same amount of adhesive on each side and will adhere to painted surfaces, dry wall, or smooth cement. Patterns are made to be repeatable. If more tiles are desired visit us at [www.store.kireiusa.com](http://www.store.kireiusa.com) to purchase another pattern bundle or extra adhesive tabs.

## How to apply adhesive tabs and install tiles:

1. Clean the wall surface of application by wiping with a damp cloth or wet rag. Do not apply tiles to the surface until it is completely dry.

2. Peel off one side of the adhesive tab. Place tab on tile and press firmly for 20 seconds. Repeat this step for all designated tab placements.
3. Measure out and mark all pattern edges on the wall for desired placement. Use a level to align the first tile.
4. Begin installing with the bottom left corner of the pattern and work your way up and right.
5. Peel off the other side of the adhesive tabs.
6. Press the tile firmly to the wall surface for 20 seconds. It is very important that the first tile is placed correctly.
7. Repeat steps 1-5 for all tiles. Ensure that each tile properly aligns with previous tiles.

## **EchoTile Geometry Angle Installation Guide**

### **What's included in a box:**

- **Opt 1)** 20 Delta Navy  
20 Delta Pacific
- **Opt 2)** 20 Delta Wine  
20 Delta Speckled Gray
- **Opt 3)** 20 Delta Pacific  
20 Delta Mushroom
- 2 bags of 70 adhesive tabs

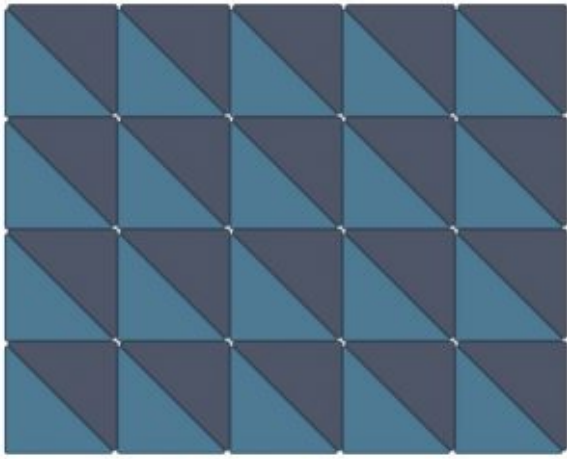
### **Tools needed (not included):**

- Level
- Measuring Tape
- Pencil

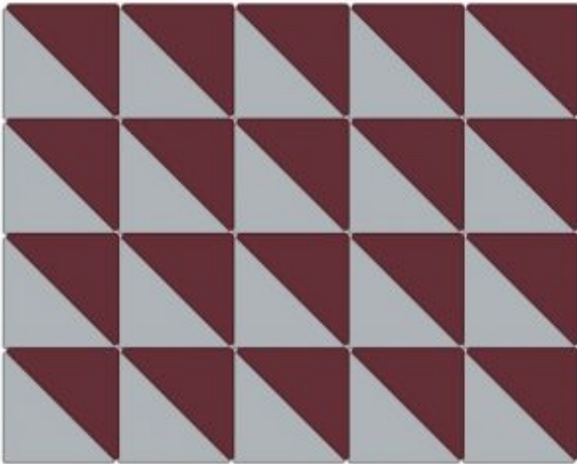
Notes: Adhesive tabs may pull finish or paint off of the wall when removed. It is not recommended to use adhesive tabs on wood, brick, or other textured surfaces. Construction adhesive is recommended for installation on textured surfaces, ceilings, and high traffic areas. Adhesive tabs are not reusable. If a tile was placed incorrectly, re-apply the tile to the surface using a new set of adhesive tabs.

Tiles are cut on a grain and can reflect light differently, looking slightly lighter or darker depending on placement. When applying the tiles, ensure the color of the tiles complements your light source. Rotate the tile if color varies from the adjacent tile.

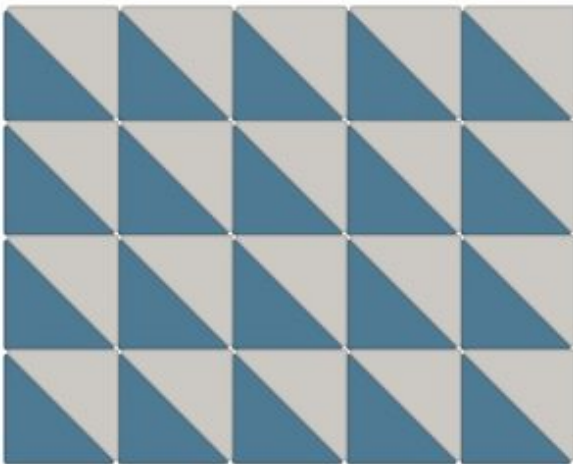
- Option 1: Geo Cool Serenity | Navy and Pacific



- Option 2: Geo Iron & Wine | Wine and Speckled Gray



- Option 3: Geo Cool Serenity | Pacific and Mushroom



## Installation

Delta Tiles require (3) 1"x1" adhesive tabs per tile for proper mounting and installation. Easy peel tabs have the same amount of adhesive on each side and will adhere to painted surfaces, dry wall, or smooth cement. Patterns are made to be repeatable. If more tiles are desired visit us at [www.store.kireiusa.com](http://www.store.kireiusa.com) to purchase another pattern bundle or extra adhesive tabs.

## How to apply easy peel adhesive tabs:

1. Clean the wall surface of application by wiping with a damp cloth or wet rag. Do not apply tiles to the surface until it is completely dry.

2. Peel off one side of the adhesive tab. Place tab on tile and press firmly for 20 seconds. Repeat this step for all designated tab placements.
3. Measure out and mark all pattern edges on the wall for desired placement. Use a level to align the first tile.
4. Begin installing with the bottom left corner of the pattern and work your way up and right.
5. Peel off the other side of the adhesive tabs.
6. Press the tile firmly to the wall surface for 20 seconds. It is very important that the first tile is placed correctly.
7. Repeat steps 1-5 for all tiles. Ensure that each tile properly aligns with previous tiles.

## **EchoTile Geometry Maximal Installation Guide**

### **What's included in a box:**

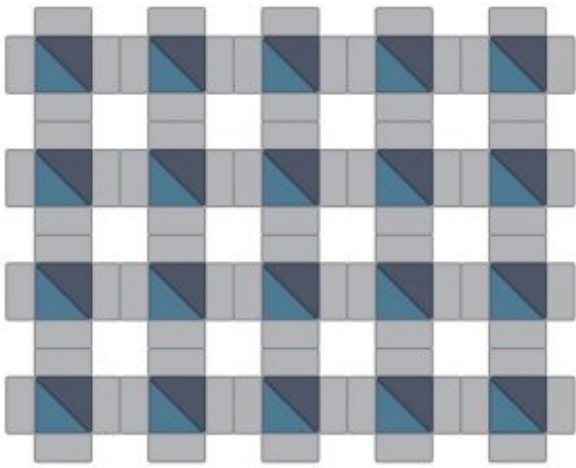
- **Opt 1)** 20 Delta Navy  
20 Delta Pacific  
80 Oblong Speckled Gray
- **Opt 2)** 20 Delta Wine  
20 Delta Speckled Gray  
80 Oblong Pacific
- **Opt 3)** 20 Delta Pacific  
20 Delta Mushroom  
80 Oblong Navy
- 6 bags of 70 adhesive tabs

### **Tools needed (not included):**

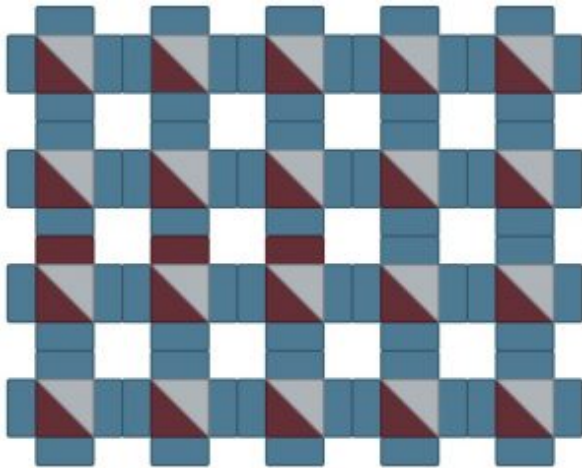
- Level
- Measuring Tape
- Pencil

**Notes:** Adhesive tabs may pull finish or paint off of the wall when removed. It is not recommended to use adhesive tabs on wood, brick, or other textured surfaces. Construction adhesive is recommended for installation on textured surfaces, ceilings, and high traffic areas. Adhesive tabs are not reusable. If a tile was placed incorrectly, re-apply the tile to the surface using a new set of adhesive tabs. Tiles are cut on a grain and can reflect light differently, looking slightly lighter or darker depending on placement. When applying the tiles, ensure the color of the tiles complements your light source. Rotate the tile if color varies from the adjacent tile.

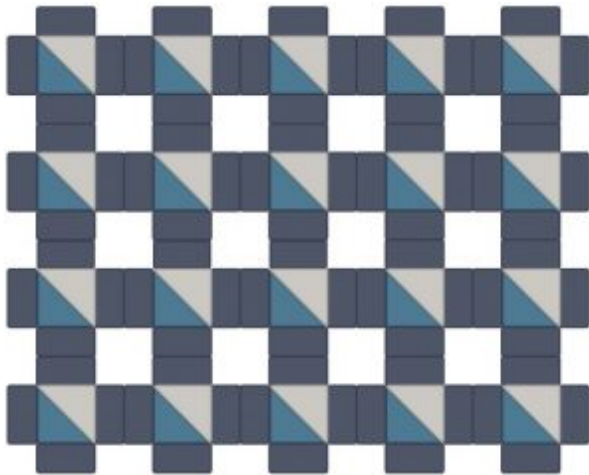
- Option 1: Geo Cool Serenity Navy, Pacific, and Speckled Gray



- Option 2: Geo Iron & Wine Wine , Speckled Gray, and Pacific



- Option 3: Geo Cool Serenity | Navy, Pacific and Mushroom



## Installation

Oblong and Delta Tiles require (3) 1"x1" adhesive tabs per tile for proper mounting and installation. Easy peel tabs have the same amount of adhesive on each side and will adhere to painted surfaces, dry wall, or smooth cement. Patterns are made to be repeatable. If more tiles are desired visit us at [www.store.kireiusa.com](http://www.store.kireiusa.com) to purchase another pattern bundle or extra adhesive tabs.

## How to apply adhesive tabs and install tiles:

1. Clean the wall surface of application by wiping with a damp cloth or wet rag. Do not apply tiles to the surface until it is completely dry.

2. Peel off one side of the adhesive tab. Place tab on tile and press firmly for 20 seconds. Repeat this step for all designated tab placements.
3. Measure out and mark all pattern edges on the wall for desired placement. Use a level to align the first tile.
4. Begin installing with the bottom left corner of the pattern and work your way up and right.
5. Peel off the other side of the adhesive tabs.
6. Press the tile firmly to the wall surface for 20 seconds. It is very important that the first tile is placed correctly.
7. Repeat steps 1-5 for all tiles. Ensure that each tile properly aligns with previous tiles.

## EchoTile Geometry Block Installation Guide

### What's included in a box:

- **Opt 1)** 20 Square Speckled Gray  
40 Oblong Pacific
- **Opt 2)** 20 Square Wine  
40 Oblong Speckled Gray
- **Opt 3)** 20 Square Navy  
40 Oblong Pacific
- 4 bags of 70 adhesive tabs

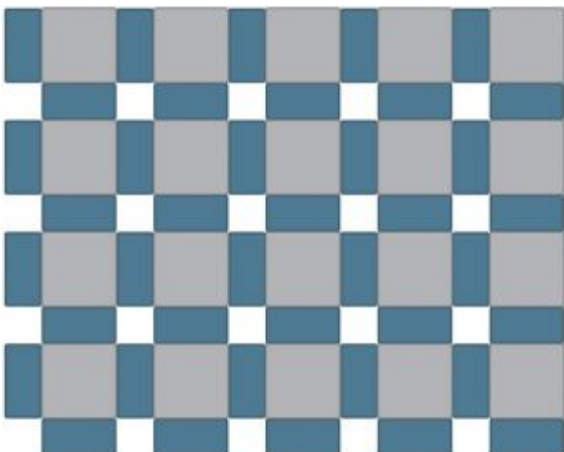
### Tools needed (not included):

- Level
- Measuring Tape
- Pencil

**Notes:** Adhesive tabs may pull finish or paint off of the wall when removed. It is not recommended to use adhesive tabs on wood, brick, or other textured surfaces. Construction adhesive is recommended for installation on textured surfaces, ceilings, and high traffic areas. Adhesive tabs are not reusable. If a tile was placed incorrectly, re-apply the tile to the surface using a new set of adhesive tabs.

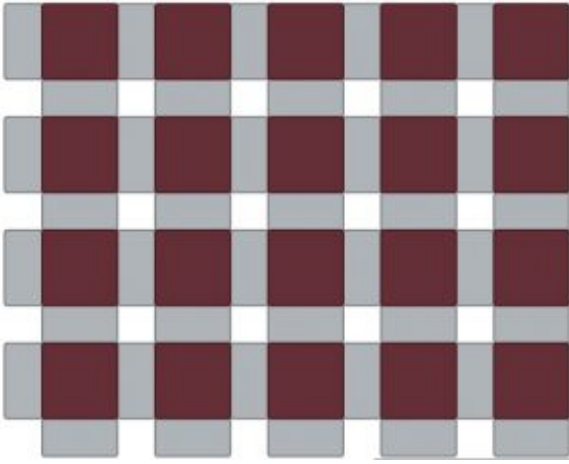
Tiles are cut on a grain and can reflect light differently, looking slightly lighter or darker depending on placement. When applying the tiles, ensure the color of the tiles complements your light source. Rotate the tile if color varies from the adjacent tile.

- Option 1: Geo Cool Serenity | Speckled Gray and Pacific

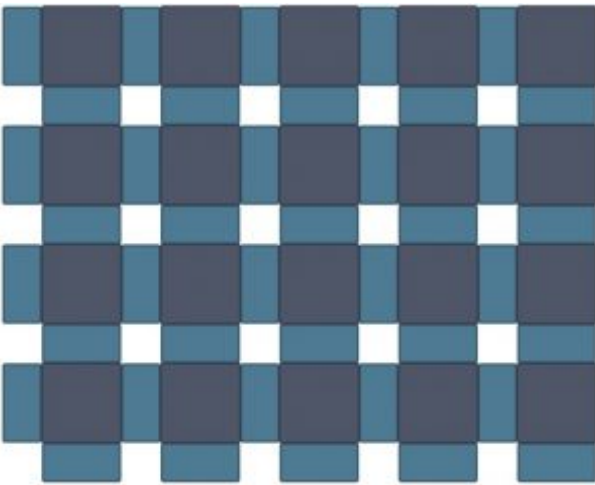




- Option 2: Geo Iron & Wine | Wine and Speckled Gray



- Option 3: Geo Cool Serenity | Navy and Pacific



## Installation

Geometry Tiles require (3—for Oblong) or (4—for Square) 1"x1" adhesive tabs per tile for proper mounting and installation. Easy peel tabs have the same amount of adhesive on each side and will adhere to painted surfaces, dry wall, or smooth cement. Patterns are made to be repeatable. If more tiles are desired visit us at [www.store.kireiusa.com](http://www.store.kireiusa.com) to purchase another pattern bundle or extra adhesive tabs.

### How to apply adhesive tabs and install tiles:

1. Clean the wall surface of application by wiping with a damp cloth or wet rag. Do not apply tiles to the surface until it is completely dry.
2. Peel off one side of the adhesive tab. Place tab on tile and press firmly for 20 seconds. Repeat this step for all designated tab placements.
3. Measure out and mark all pattern edges on the wall for desired placement. Use a level to align the first tile.
4. Begin installing with the bottom left corner of the pattern and work your way up and right.
5. Peel off the other side of the adhesive tabs.
6. Press the tile firmly to the wall surface for 20 seconds. It is very important that the first tile is placed correctly.
7. Repeat steps 1-5 for all tiles. Ensure that each tile properly aligns with previous tiles.

## EchoTile Geometry Invader Installation Guide

### What's included in a box:

- **Opt 1)** 40 Delta Navy  
40 Delta Speckled Gray
- **Opt 2)** 40 Delta Wine  
40 Delta Pacific
- **Opt 3)** 40 Delta Navy  
40 Delta Mushroom
- 4 bags of 70 adhesive tabs

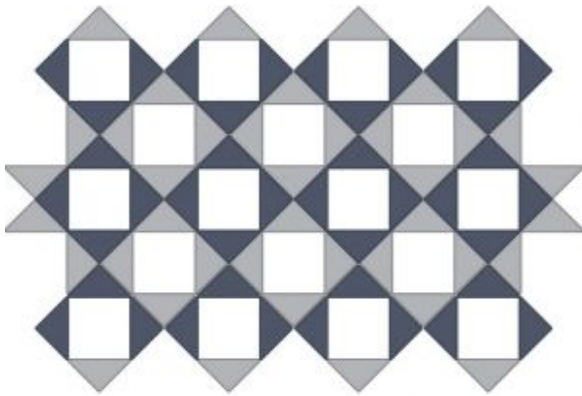
**Tools needed (not included):**

- Level
- Measuring Tape
- Pencil

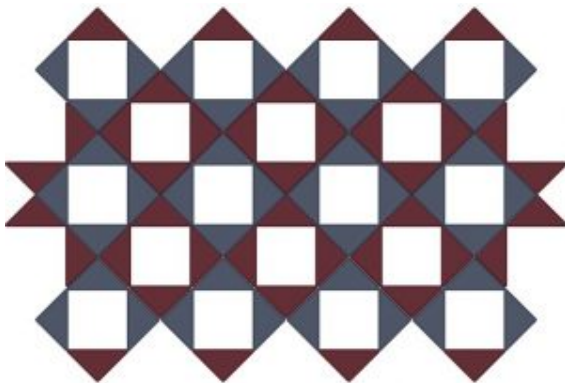
**Notes:** Adhesive tabs may pull finish or paint off of the wall when removed. It is not recommended to use adhesive tabs on wood, brick, or other textured surfaces. Construction adhesive is recommended for installation on textured surfaces, ceilings, and high traffic areas. Adhesive tabs are not reusable. If a tile was placed incorrectly, re-apply the tile to the surface using a new set of adhesive tabs.

Tiles are cut on a grain and can reflect light differently, looking slightly lighter or darker depending on placement. When applying the tiles, ensure the color of the tiles complements your light source. Rotate the tile if color varies from the adjacent tile.

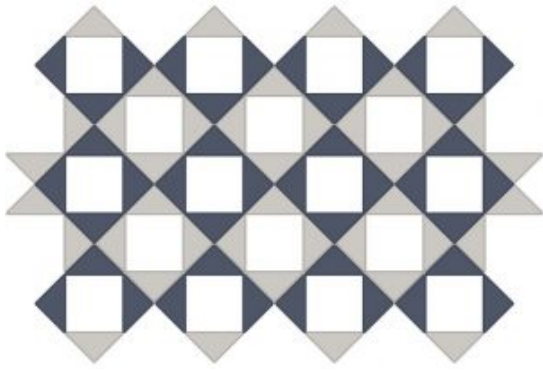
- Option 1: Geo Cool Serenity | Navy and Speckled Gray



- Option 2: Geo Iron & Wine | Wine and Pacific



- Geo Cool Serenity | Navy and Mushroom



## Installation

Delta Tiles require (3) 1"x1" adhesive tabs per tile for proper mounting and installation. Easy peel tabs have the same amount of adhesive on each side and will adhere to painted surfaces, dry wall, or smooth cement. Patterns are made to be repeatable. If more tiles are desired visit us at [www.store.kireiusa.com](http://www.store.kireiusa.com) to purchase another pattern bundle or extra adhesive tabs.

### How to apply adhesive tabs and install tiles:

1. Clean the wall surface of application by wiping with a damp cloth or wet rag. Do not apply tiles to the surface until it is completely dry.
2. Peel off one side of the adhesive tab. Place tab on tile and press firmly for 20 seconds. Repeat this step for all designated tab placements.
3. Measure out and mark all pattern edges on the wall for desired placement. Use a level to align the first tile.
4. Begin installing with the bottom left corner of the pattern and work your way up and right.
5. Peel off the other side of the adhesive tabs.
6. Press the tile firmly to the wall surface for 20 seconds. It is very important that the first tile is placed correctly.
7. Repeat steps 1-5 for all tiles. Ensure that each tile properly aligns with previous tiles.

# kirei

## Documents / Resources



[kirei EchoTile Geometry Pattern](#) [pdf] Installation Guide  
EchoTile Geometry Pattern

