

## KINMATES K01 Page Turner for eReader User Manual



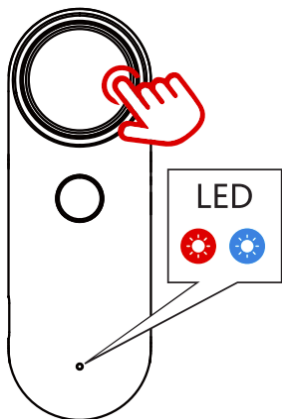
### Contents [ [hide](#) ]

- 1 Pairing
- 2 Using Guide on Kindle
- 3 Solutions for Pairing Failures
- 4 Guide for Taking Photos and Videos
- 5 Power Off
- 6 Pairing Status – In Pairing/Out of Pairing
- 7 Battery Management of Remote
- 8 Battery Management of Page Turner
- 9 Tips
- 10 FCC Warning Statement
- 11 Documents / Resources
  - 11.1 References

## Pairing

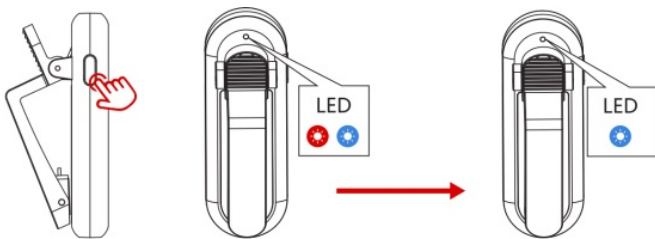
### Step 1. Power on the remote.

Press and hold the button until it alternately flashes red and blue.



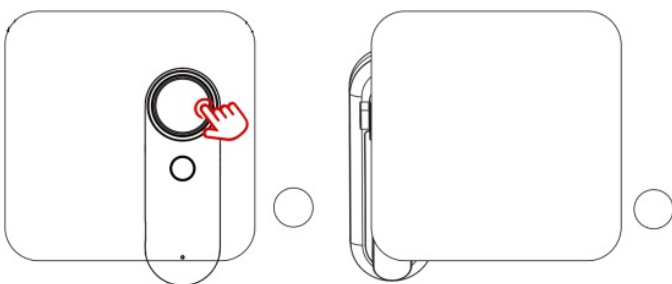
### Step 2. Power on the page turner.

Press and hold the side button until it alternately flashes red and blue, then stays blue for 5 sec.



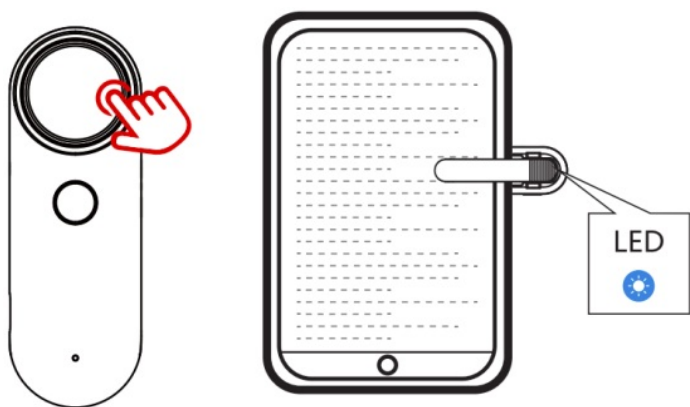
### Step 3. Ensure they are paired.

The page turner flashes blue every time press the remote, indicating a successful connection.



### Step 4. Clip the page turner to your Kindle and press the remote button to turn pages.

**Tips:** Only for page forward

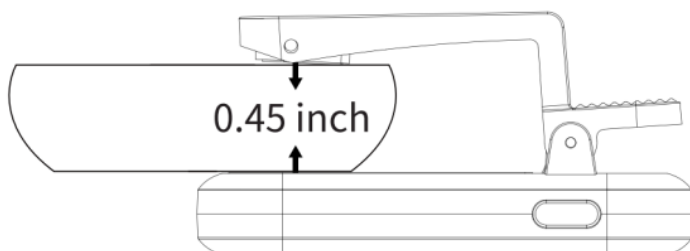


## Using Guide on Kindle

1. Please don't clip the page turner upside down.

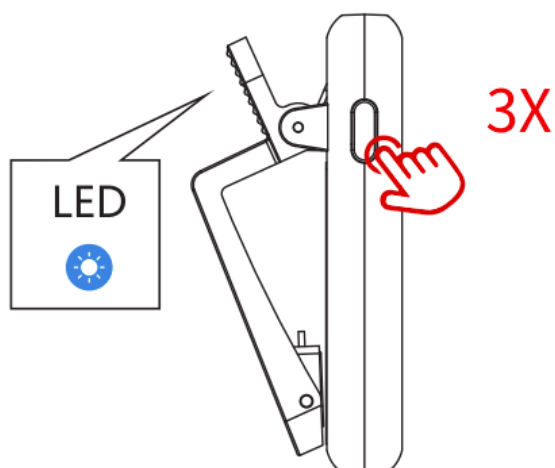


2. The thickness of your Kindle should be less than 0.45 inch.



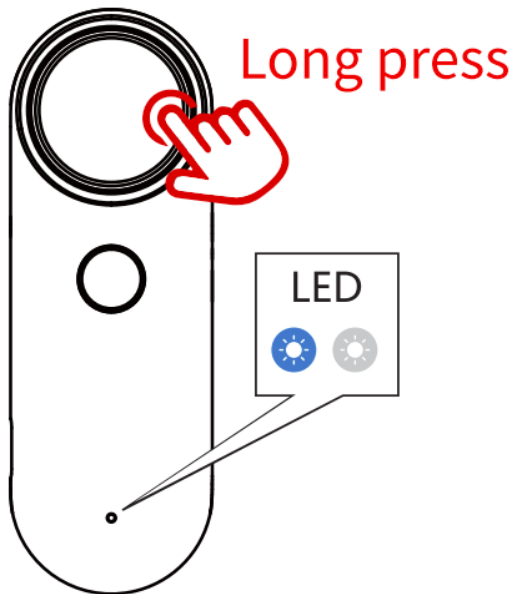
## Solutions for Pairing Failures

**Step 1.** In the page turner's powered-off state, press the power button three times consecutively. The blue light will flash.



**Step 2.** Press and hold the button on the remote until the blue light on the page turner

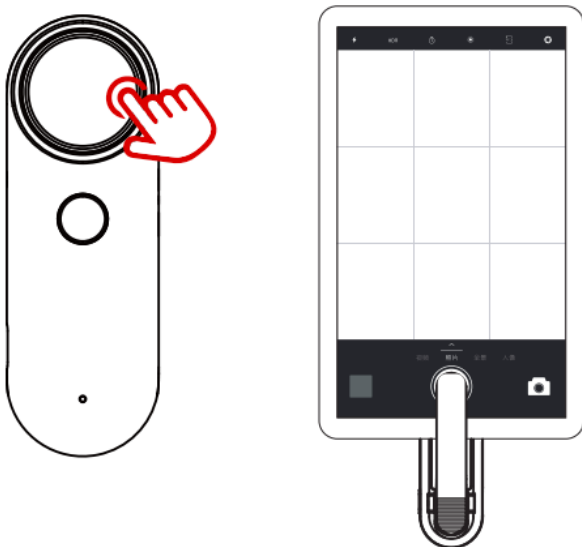
stops flashing, indicating successful pairing.



## Guide for Taking Photos and Videos

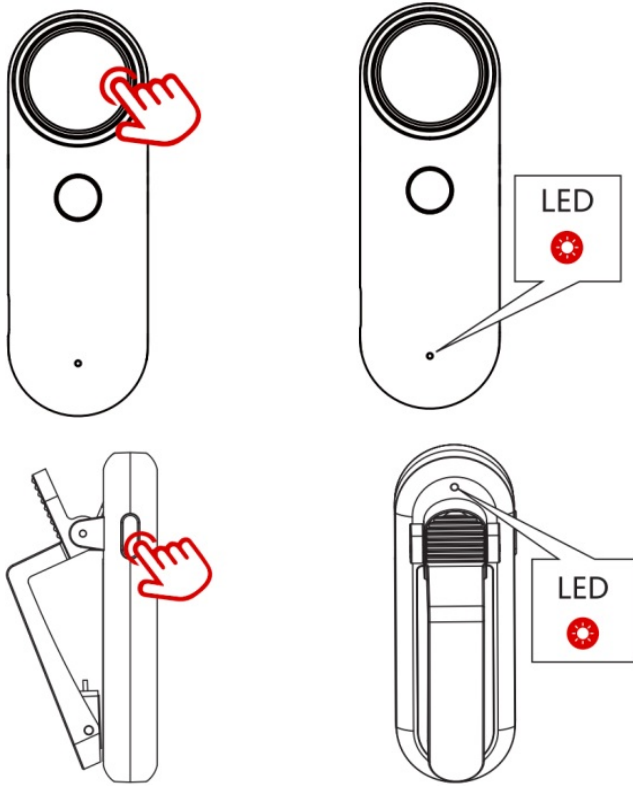
**Step 1.** Secure the page turner onto the shutter area of your mobile phone/tablet/iPad.

**Step 2.** Press the remote button to activate the shutter.



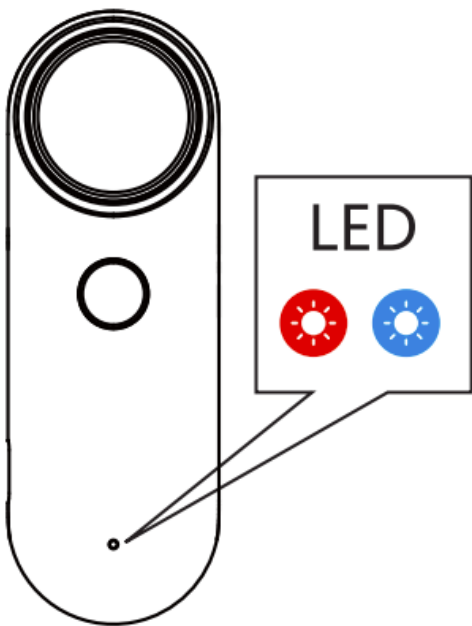
## Power Off

In power-on state, press & hold button for 5 sec to shut down, with red light staying on for 5 sec.

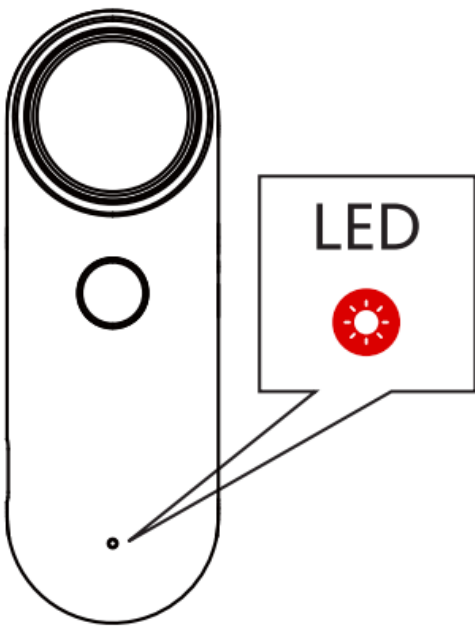


## Pairing Status – In Pairing/Out of Pairing

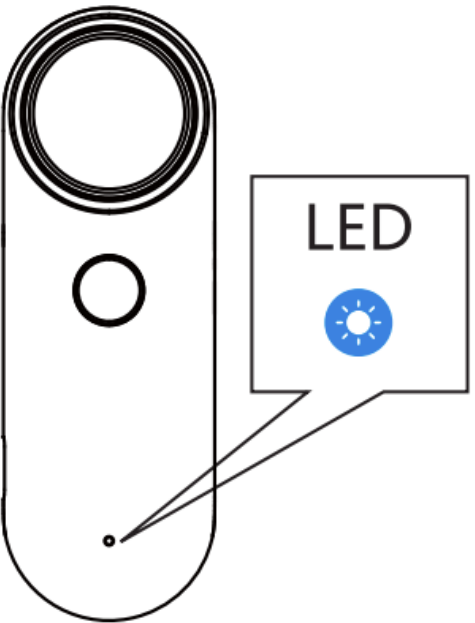
1. Waiting pairing/out of pairing.



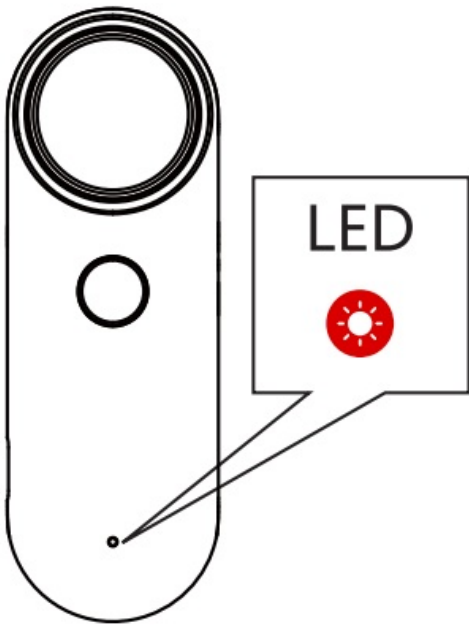
2. Auto shutdown after 5 minutes without connection. Red light stays on for 5 seconds.



3. Paired within 5 minutes, blue light stays on for 5 seconds, then enters standby mode.



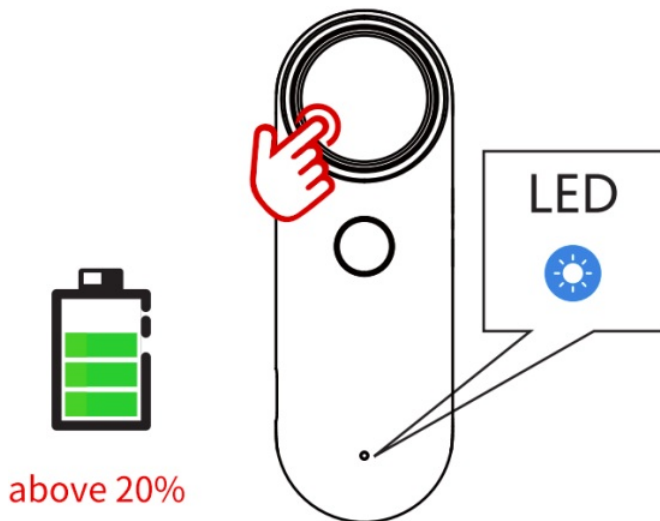
4. The remote shuts down after 30 seconds of inactivity, with the red light on for 5 seconds.



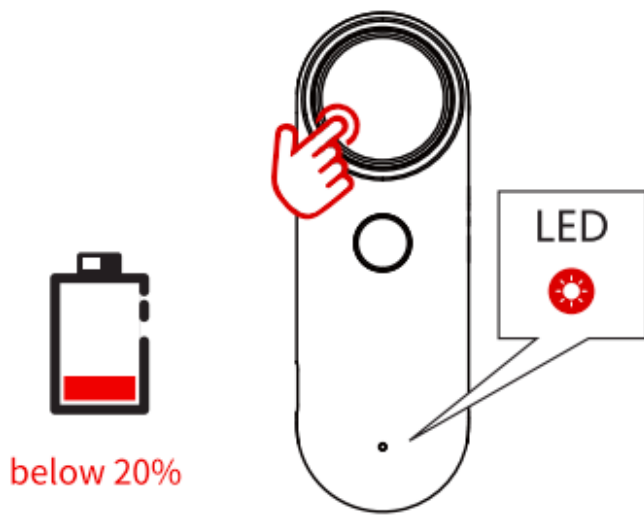
## Battery Management of Remote

The remote with 300mAh battery capacity can be used for 3 months in standby mode and fully charged within 2 hours of charging; 3 hours per day, it can be used for 2 weeks.

1. When the battery level is above 20%, it flashes blue with each press and sends the page-turning instruction simultaneously.



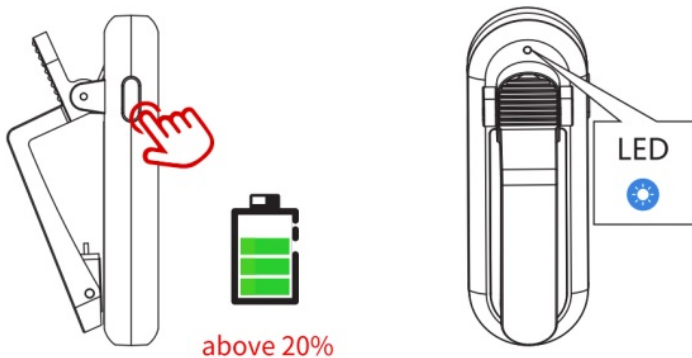
2. When the battery level is 20% – 10%, it flashes red with each press and sends the page-turning instruction simultaneously.
3. When the battery is below 10%, the red light continuously flashes and the button press sends the instruction.
4. When the battery is 0%, the red light stays on for 5 sec before shutdown. Long press for 5 sec and the red light flashes 3 times, won't performing any work cmd.



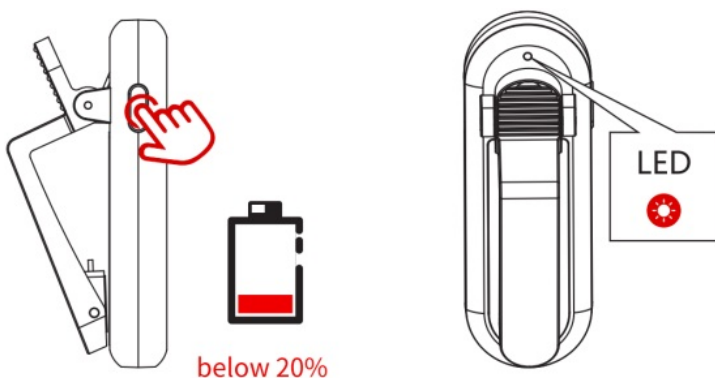
## Battery Management of Page Turner

The page turner with 200mAh battery capacity can be used for 3 months in standby mode and fully charged within 2 hours of charging; 3 hours per day, it can be used for 2 weeks.

1. When the battery level is above 20%, it flashes blue with each press of button.



2. When the battery level is 20% – 10%, it flashes red with each press of button.
3. When the battery is below 10%, the red light continuously flashes.
4. When the battery is 0%, the red light stays on for 5 sec before shutdown. Long press for 5 sec and the red light flashes 3 times, won't performing any work cmd.



## Tips



1. The total thickness of the e-reader and the shell cannot exceed 0.45 inch.
2. When pressing the buttons of the remote/or page turner, if the LED isn't on/or the red light is flashing, please charge before use.
3. The input voltage is DC5.0V, and a mobile phone charger can be used.
4. Keep the contact trigger of the page turner clean.
5. During use, make sure the contact of page turner touches the screen.
6. With all blue lights on, if remote can't control page turner, please re-pair.
7. When the remote cannot turn pages, please try the following operations.
  1. > Try various positions on the screen to locate the suitable contact positions.
  2. >Clip the page turner onto the screen, turn off the screen, and then turn it on once again.
  3. > Open the reading app on the iPad or cell phone, and utilize the remote to turn pages. Verify whether it is effective.

If it doesn't function, please send a message to contact us.

## **FCC Warning Statement**

Changes or modifications not expressly approved by the party responsible for compliance could void the user's authority to operate the equipment. This equipment has been tested and found to comply with the limits for a Class B digital device, pursuant to Part 15 of the FCC Rules. These limits are designed to provide reasonable protection against harmful interference in a residential installation. This equipment generates uses and can radiate radio frequency energy and, if not installed and used in accordance with the instructions, may cause harmful interference to radio communications. However, there is no guarantee that interference will not occur in a particular installation. If this equipment equipment does cause harmful interference to radio or television reception, which can be determined by turning the equipment off and on, the user is encouraged to try to correct the interference by one or more of the following measures:


- Reorient or relocate the receiving antenna.
- Increase the separation between the equipment and receiver.
- Connect the equipment into an outlet on a circuit different from that to which the receiver is connected.
- Consult the dealer or an experienced radio/TV technician for help.

This device complies with part 15 of the FCC Rules. Operation is subject to the following two conditions: (1) This device may not cause harmful interference, and (2) this device must accept any interference received, including interference that may cause undesired operation.

The device has been evaluated to meet general RF exposure requirement. The device can be used in portable exposure condition without restriction.



## Documents / Resources

	<a href="#">KINMATES K01 Page Turner for eReader [pdf]</a> User Manual 2BLJ5-K01PRO, 2BLJ5K01PRO, k01pro, K01 Page Turner for eReader, K01, Page Turner for eReader, Turner for eReader, eReader, Turner
-----------------------------------------------------------------------------------	-------------------------------------------------------------------------------------------------------------------------------------------------------------------------------------------------------------

## References

- [User Manual](#)

■ KINMATES

◆ 2BLJ5-K01PRO, 2BLJ5K01PRO, eReader, K01, K01 Page Turner for eReader, K01PRO, KINMATES, Page Turner for eReader, Turner, Turner for eReader

—Previous Post

[KINMATES T01 Tiktok Scrolling Ring Instruction Manual](#)

—

## Leave a comment

Your email address will not be published. Required fields are marked \*

Comment \*

Name

Email

Website

☐ Save my name, email, and website in this browser for the next time I comment.

Post Comment

Search:

e.g. whirlpool wrf535swhz

Search

[Manuals+](#) | [Upload](#) | [Deep Search](#) | [Privacy Policy](#) | [@manuals.plus](#) | [YouTube](#)

This website is an independent publication and is neither affiliated with nor endorsed by any of the trademark owners. The "Bluetooth®" word mark and logos are registered trademarks owned by Bluetooth SIG, Inc. The "Wi-Fi®" word mark and logos are registered trademarks owned by the Wi-Fi Alliance. Any use of these marks on this website does not imply any affiliation with or endorsement.