


*Kingunion*  
**KU-CSJ-01**  
**Intelligent**  
**Controller**



## Kingunion KU-CSJ-01 Intelligent Controller Owner's Manual

[Home](#) » [Kingunion](#) » Kingunion KU-CSJ-01 Intelligent Controller Owner's Manual 

### Contents

- [1 Kingunion KU-CSJ-01 Intelligent Controller](#)
- [2 Specifications](#)
- [3 Product Usage Instructions](#)
- [4 FAQs](#)
- [5 PRODUCT INFORMATION](#)
- [6 Operating environment](#)
- [7 FCC](#)
- [8 Documents / Resources](#)
  - [8.1 References](#)
- [9 Related Posts](#)

*Kingunion*

### Kingunion KU-CSJ-01 Intelligent Controller



### Specifications

- Product Name: KU-CSJ-01 Intelligent Controller
- Supported Platforms: Apple iOS, Android
- Controlled Devices: LED Light Strips
- Compatibility: Android version 4.3 and iOS version 8.0 or above

## **Product Usage Instructions**

### **Software Overview**

Bao Lian Deng is a mobile APP program that controls LED light strips with Apple or Android mobile phones. It offers a convenient and powerful control mode replacing traditional methods.

### **Functions:**

The functions include color and brightness adjustment for color LED strips, brightness and color temperature adjustment for monochrome LED strips, music synchronization for changing light colors, built-in color-changing modes, long-distance control, and multi-group control mode.

### **Performance:**

The Bao lian Deng APP is easy to use, compatible with a wide range of mobile phones, occupies fewer system resources, and has low configuration requirements. It provides smooth lamp control with minimal delay.

### **Operating Environment:**

The APP requires Android version 4.3 and iOS version 8.0 or above. It is not limited by mobile phone configuration.

### **Method of Use:**

### **App Download:**

To download the app, scan the QR code provided or search for it in the respective app store.

### **Software Operation:**

1. Tap the Baoliandeng APP icon to enter the application.
2. If Bluetooth is off, a prompt will appear to turn it on.
3. Navigate through the color interface, light list display, color plate switch, manual color adjustment, settings view, and device list.
4. Utilize RGB value adjustment for manual color customization.

## **FAQs**

### **Q: Which mobile phone platforms are compatible with the Bao lian Deng APP?**

A: The Bao lian Deng APP is compatible with Apple iOS and Android platforms.

## **Q: What are the key functions of the Bao lian Deng APP?**

A: The key functions include color and brightness adjustment for LED light strips, music synchronization for changing light colors, built-in color-changing modes, long-distance control, and multi-group control mode.

## **PRODUCT INFORMATION**

- Product name: KU-CSJ-01, LED lamp with intelligent controller Lotus Lantern (Lotus Lantern)
- Bluetooth BLE single-mode direct mobile phone APP
- Product size: No. 1 mold 3 keys (L67 \* W34 \* H17mm)
- Function configuration: support DC5-24V, 1 support 3 button function, 2 support Lotus Lantern (Lotus Lantern) Bluetooth BLE direct mobile phone APP, 3 support 2.4G remote control.
- Product use: LED lamp strip, LED hard lamp strip use.
- Functional effects: switch, switching mode, brightness/speed adjustment effect,
- Through the switch mode function key, there are a total of 12 scene modes, cyclic switching (1. red 2. green 3. blue 4. cyan 5. purple 6. yellow 7. white static color, 8. three-color jump 9. seven-color jump 10. three-color gradient 11. seven-color gradient 12. white flashing mode),
- Brightness/speed can be adjusted by pressing the up and down keys, brightness can be adjusted in the static color mode, and speed can be adjusted in the dynamic mode.
- In static: adjust the brightness by pressing the up and down shift keys,
- In motion: Shift up or down in accordance with the speed adjustment
- Function feasible solution: support RGB colorful three ways, support 3 buttons function, support Lotus Lantern (Lotus Lantern) Bluetooth BLE single-mode direct mobile phone APP, support 2.4G remote control more experience

## Software Overview

### **Overview**

Bao Lian Deng is a mobile APP program that controls LED light strips with Apple or Android mobile phones. The mobile phone control mode replaces the traditional infrared, 433, 2.4G and another old remote control mode, which is convenient, fast, powerful and extensible! You can control the color, brightness and color temperature of the intelligent LED strip through the mobile phone APP, and you can also set various flashing patterns. You can also make the LED strip move in rhythm with the music. You only need to keep the LED strip powered on, open the BaoLianDeng APP, connect one or more LED strips through Bluetooth, so as to realize the various settings and control of multiple LED strips. The operation is very simple and easy to learn!

### **Functions**

- Color and brightness adjustment of 60,000 colors for color LED strip, brightness and color temperature adjustment for monochrome LED strip
- Playing mobile phone music or turning on an audio device can change the color and brightness of the lights according to the rhythm of the music.

The rhythm is magnificent.

- Multiple built-in color-changing modes, away from the automatic control of the mobile phone;

- Long-distance control without direction restriction, as well as multi-to-multi group control mode;
- One connection, automatic reconnection, worry-free mode.

## Performance

Bao Lian Deng APP has good ease of use and compatibility. It has been tested on hundreds of mobile phones and is compatible with the current market. More than 95% of the mobile phones. APP is small and convenient, occupies less system resources, and has low requirements for mobile phone configuration. The control delay is small, the operation feeling is good, and the visual feeling of lamp control is smooth.

## Operating environment

This APP requires Android version 4.3 and iOS version 8.0 or above. Mobile phone configuration is not limited.

## Method of use

Note: The download and usage methods of the Android version and the iOS version are basically the same, and this example is for the Android version.

## App Download

For both iOS and Android systems, you can scan the QR code to download the Magic Lotus Lantern app. Open the scan function browser, QQ, WeChat, and other application tools, scan the Lotus Lantern two-dimensional code.

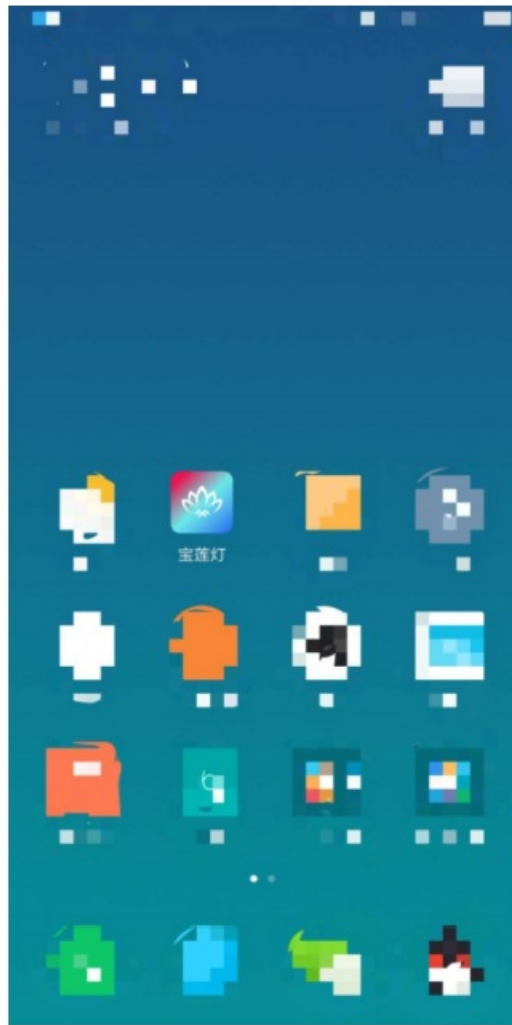


After the software installation download is successful, click the APK installation. After the installation is completed, the following style of program icon will appear on the desktop:



## Software operation

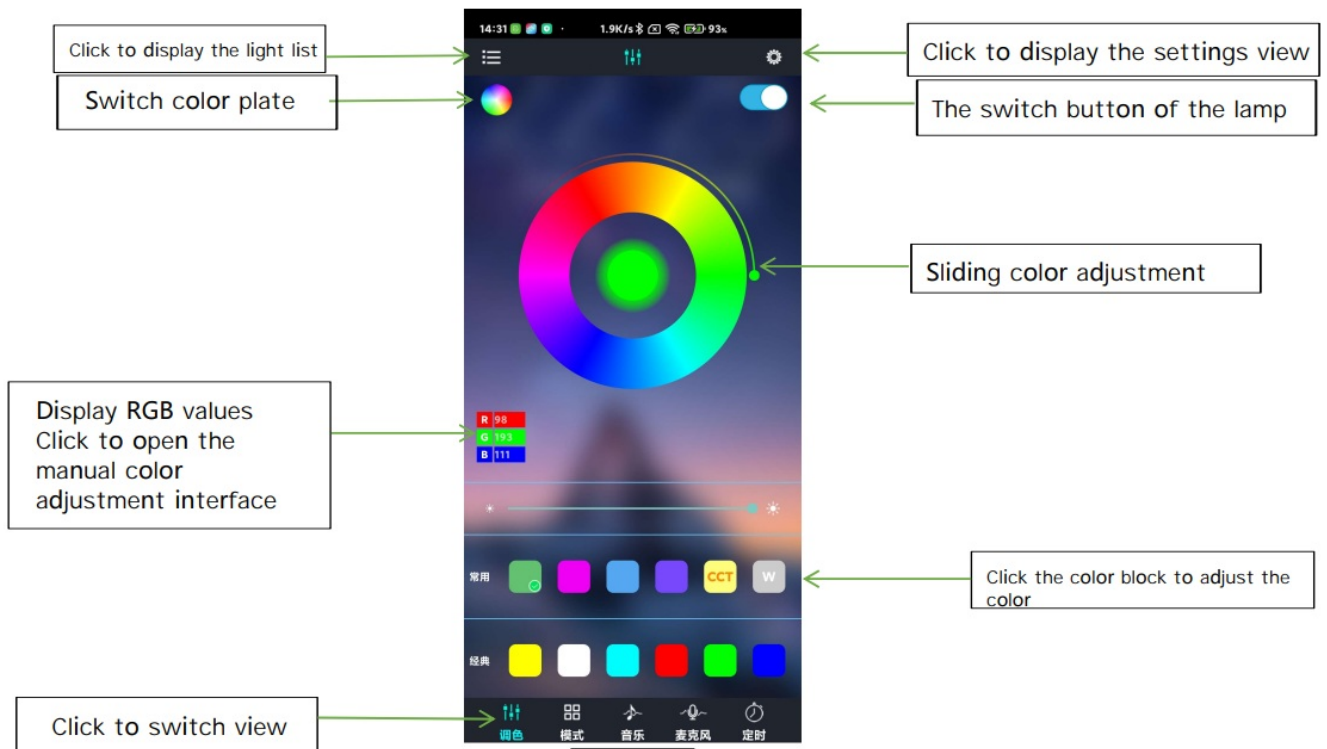
1. Tap the Baoliandeng APP icon to enter the APP page



2. After entering the APP interface, if Bluetooth is not turned on, Baolian Lantern application, want to turn on Bluetooth= will pop up. Click [Allow].

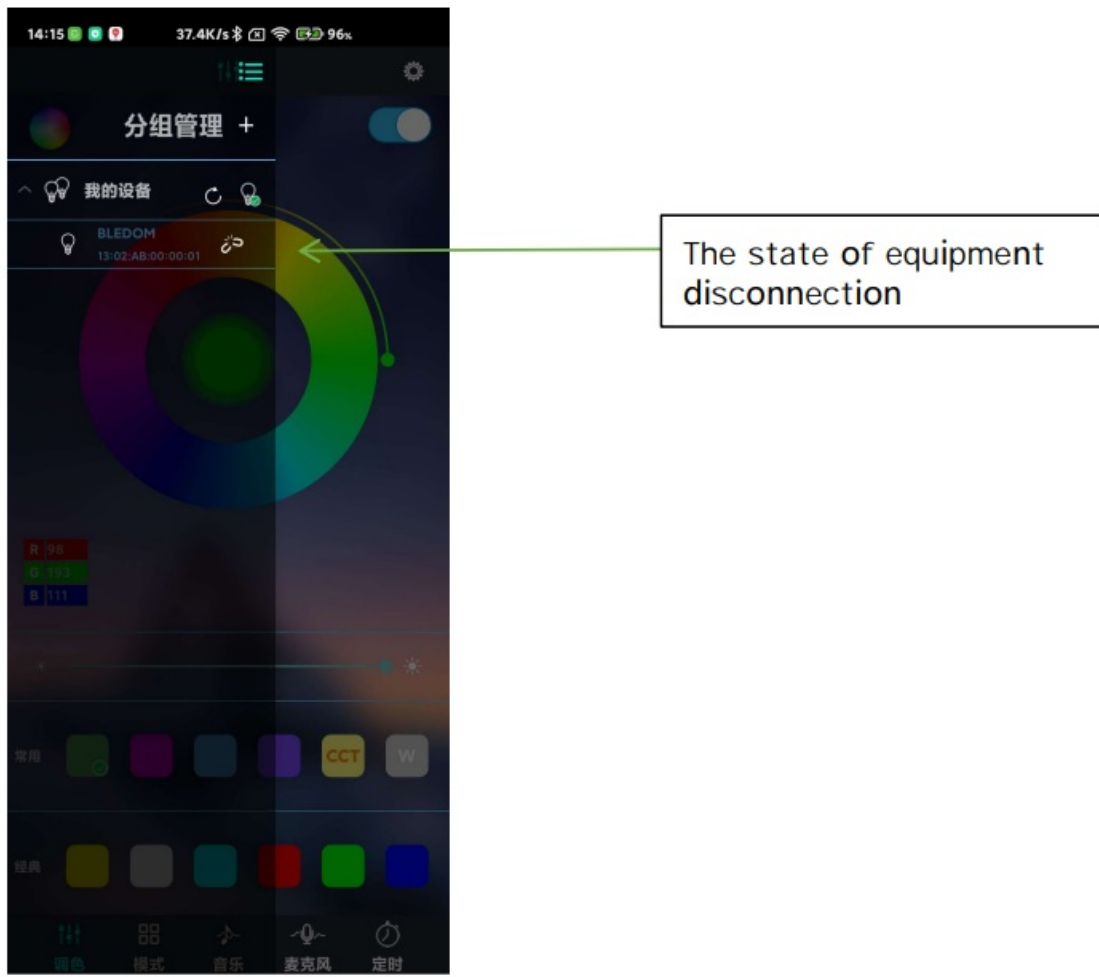


3. Switch to the color interface

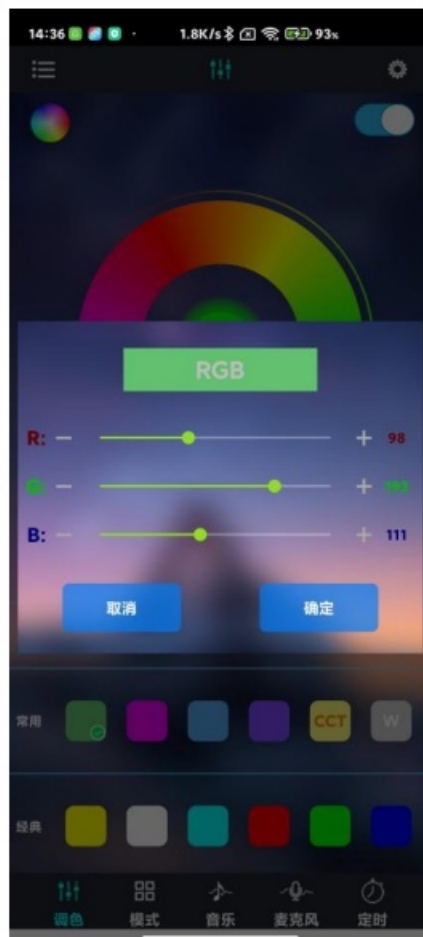


4. Click on the device list to view the device





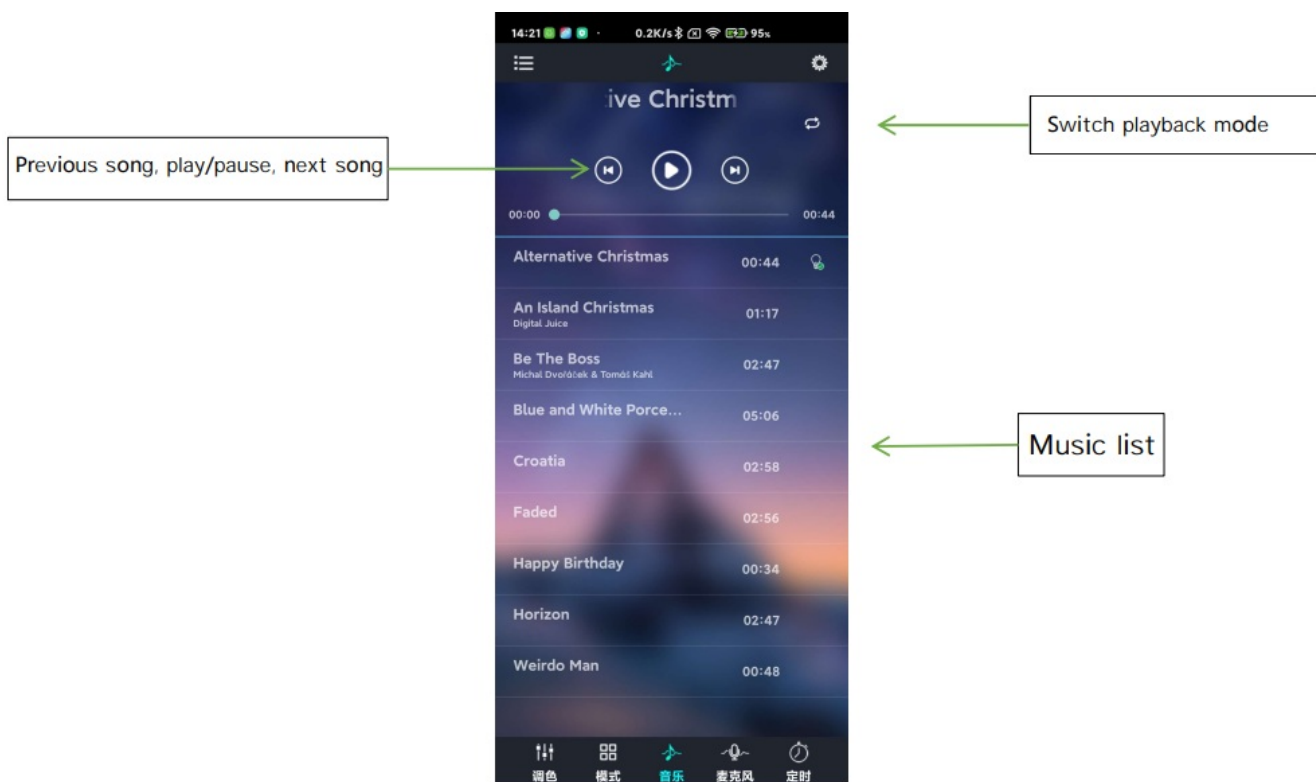
5. Click the RGB adjustment button to enter the manual RGB value adjustment interface:



6. Switch to the mode interface



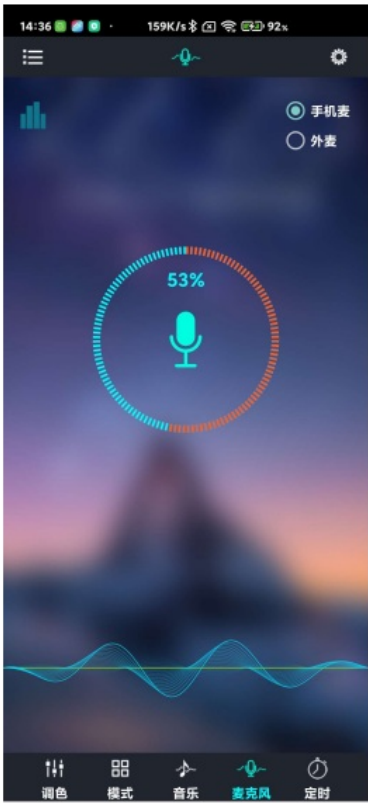
## 7. Switch to the music interface



## 8. Switch to the microphone rhythm interface

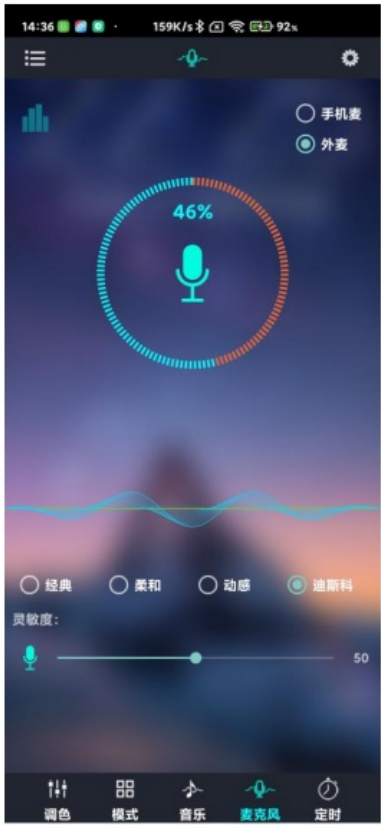


Music rhythm through mobile phone microphone



Switch the mobile phone microphone and external microphone

Music rhythm through microphone on product

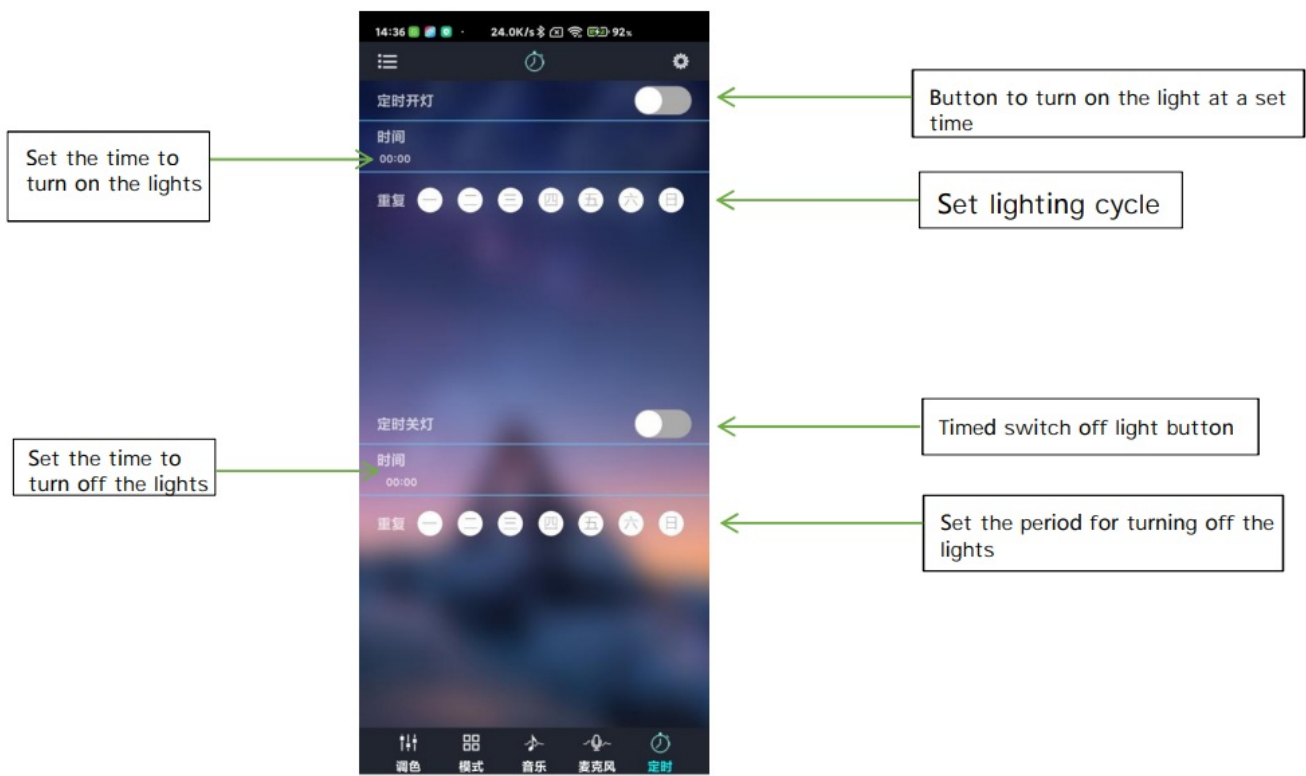


Switch the mobile phone microphone and external microphone

Set different rhythm modes

Adjusting sensitivity

9. Switch to the timer interface



10. Switch to the sequence adjustment interface



## FCC

### FCC Statement

This equipment has been tested and found to comply with the limits for a Class B digital device, pursuant to part 15 of the FCC Rules. These limits are designed to provide reasonable protection against harmful interference in a residential installation. This equipment generates, uses, and can radiate radio frequency energy and, if not installed and used in accordance with the instructions, may cause harmful interference to radio communications. However, there is no guarantee that interference will not occur in a particular installation. If this equipment does

cause harmful interference to radio or television reception, which can be determined by turning the equipment off and on, the user is encouraged to try to correct the interference by one or more of the following measures:

- Reorient or relocate the receiving antenna.
- Increase the separation between the equipment and the receiver.
- Connect the equipment to an outlet on a circuit different from that to which the receiver is connected.
- Consult the dealer or an experienced radio/TV technician for help.

**Caution:** Any changes or modifications to this device not explicitly approved by the manufacturer could void your authority to operate this equipment.


This device complies with part 15 of the FCC Rules. Operation is subject to the following two conditions: (1) This device may not cause harmful interference, and (2) this device must accept any interference received, including interference that may cause undesired operation.

## RF Exposure Information

This equipment complies with FCC radiation exposure limits set forth for an uncontrolled environment. This equipment should be installed and operated with a minimum distance 20cm between the radiator and your body.

**NOTE 2:** Any changes or modifications to this unit not expressly approved by the party responsible for compliance could void the user's authority to operate the equipment.

## Documents / Resources

	<a href="#">Kingunion KU-CSJ-01 Intelligent Controller</a> [pdf] Owner's Manual KUCSJA01, 2A73Z-KUCSJA01, KU-CSJ-01 Intelligent Controller, KU-CSJ-01, Intelligent Controller, Controller
---	--

## References

- [User Manual](#)

[Manuals+.](#) [Privacy Policy](#)

This website is an independent publication and is neither affiliated with nor endorsed by any of the trademark owners. The "Bluetooth®" word mark and logos are registered trademarks owned by Bluetooth SIG, Inc. The "Wi-Fi®" word mark and logos are registered trademarks owned by the Wi-Fi Alliance. Any use of these marks on this website does not imply any affiliation with or endorsement.