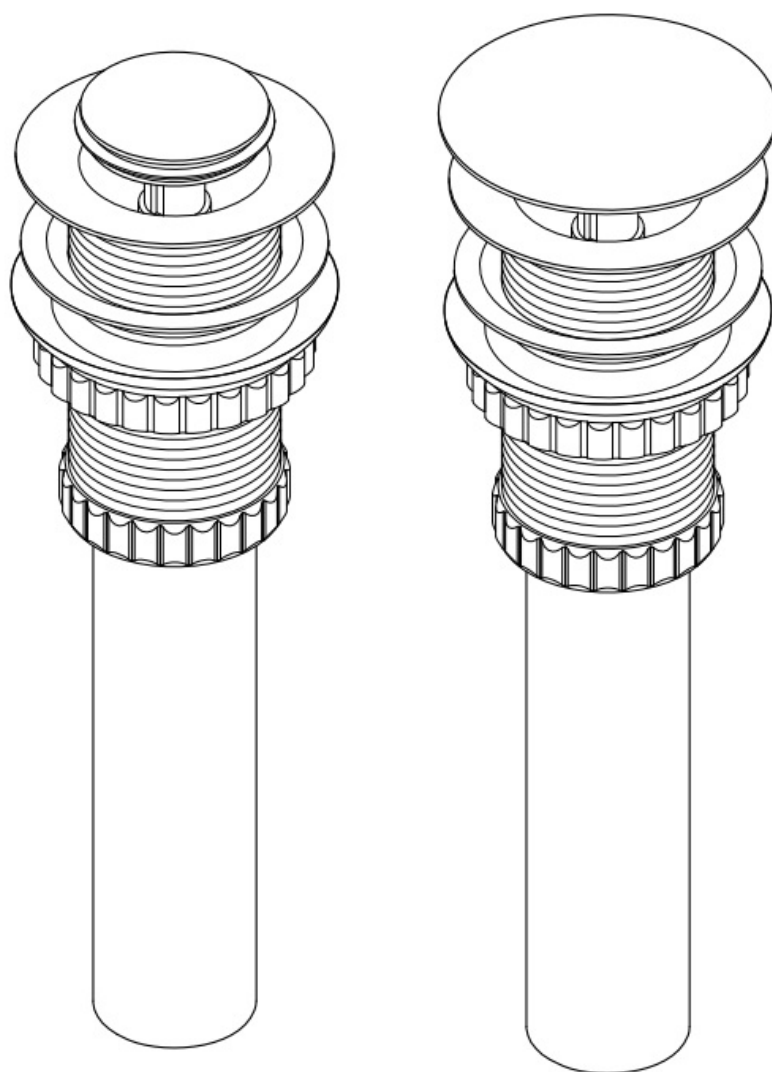




KINGSTON EV8410MB Push Drain Without Overflow



Contents [[hide](#)]

[1 TOOLS REQUIRED](#)

[2 INSTALLATION](#)

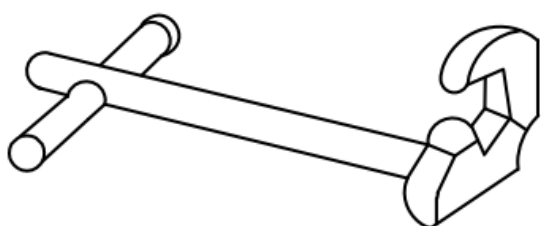
[3 CUSTOMER SUPPORT](#)

[4 Documents / Resources](#)

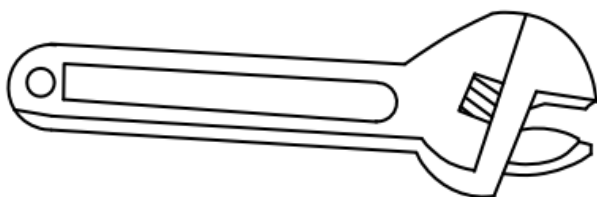
[4.1 References](#)

TOOLS REQUIRED

- Basin Wrench



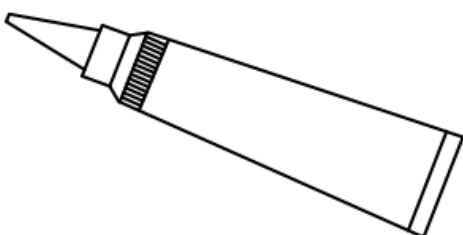
- Adjustable Wrench



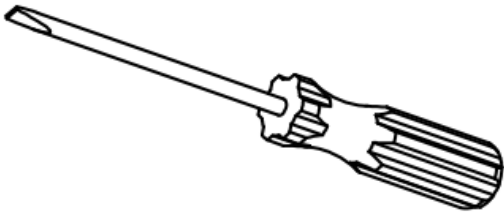
- Teflon Tape



- Silicone Sealant



- Screwdriver

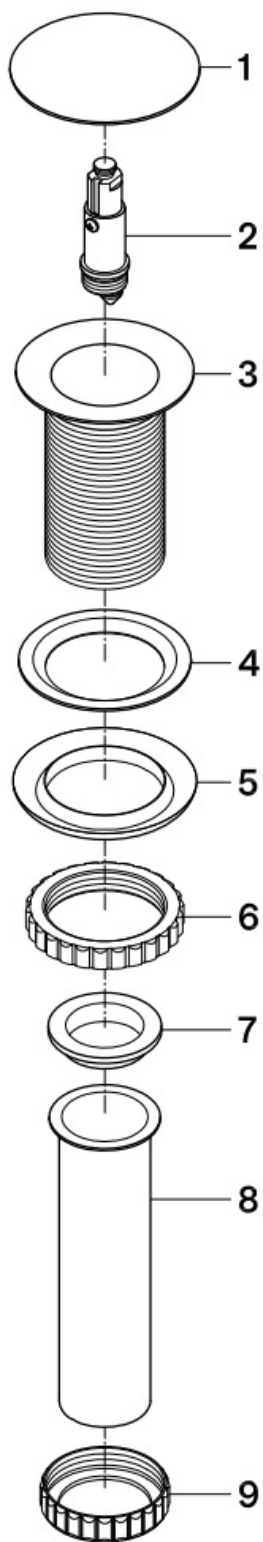


NOTICE

Failure to follow all directions may cause leaks which may result in water damage.

INSTALLATION

1. Remove parts (5)/(6)/ (7)/(8)/ (9) from the drain body (3).
2. Insert the drain assembly (1) / (2) / (3) / (4) downward through the sink's drain opening, so the outer threads of the drain body (3) go completely through the drain opening and are exposed beneath the sink.
3. Make sure the rubber gasket (4) to fit in the drain opening evenly and snugly and its outside taper-surface is facing down.
4. Install rubber gasket (5) and lock nut (6) upwardly onto the drain body (3) from the thread end of drain body (3). Make sure the inside taper-surface of the rubber gasket (5) is facing up.
5. Slowly tighten up the lock nut (6) with a wrench until the rubber gasket (5) can completely and tightly seal the drain opening beneath the sink.
6. Put the rubber washer (7) back to the tailpiece (8) in its correct direction, so the rubber washer (7) can completely sit on the tailpiece (8).
7. Connect (7) and (8) on to the thread end of the drain body (3) with the connection nut (9). Turn the connection nut (9) slowly by hand until the tailpiece (8) cannot rotate.
8. Push the stopper (1) to the closed position of the drain body (3), then turn on the faucet to fully fill the sink with water. Examine and ensure that no water is leaking from the tailpiece (8).
9. Push the stopper (1) to the open position to drain water, examine to make sure no water leakage around the rubber gasket (5) or connection with tailpiece (8). If leakage found, adjust the rubber gasket (5) and re-tighten up the lock nut (6) or reconnect the tailpiece (8) until no more leakage found.



CUSTOMER SUPPORT

©2025 LVC Kingston LLC. All Rights Reserved.

2025-07-GC

www.kingstonbrass.com

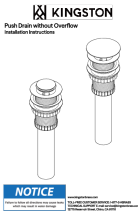
TOLL-FREE CUSTOMER SERVICE: 1-877-2-KBRASS

TECHNICAL SUPPORT **E-mail:** service@kingstonbrass.com

12775 Reservoir Street, Chino, CA 91710



Documents / Resources

	KINGSTON EV8410MB Push Drain Without Overflow [pdf] Installation Guide EV8410MB Push Drain Without Overflow, EV8410MB, Push Drain Without Overflow, Drain Without Overflow, Without Overflow
---	---

References

- [User Manual](#)

Kingston

Drain Without Overflow, EV8410MB, EV8410MB Push Drain Without Overflow, Kingston, Push Drain Without Overflow, Without Overflow

Leave a comment

Your email address will not be published. Required fields are marked *

Comment *

Name

Email

Website

☐ Save my name, email, and website in this browser for the next time I comment.

Post Comment

Search:

e.g. whirlpool wrf535swhz

Search

[Manuals+](#) | [Upload](#) | [Deep Search](#) | [Privacy Policy](#) | [@manuals.plus](#) | [YouTube](#)

This website is an independent publication and is neither affiliated with nor endorsed by any of the trademark owners. The "Bluetooth®" word mark and logos are registered trademarks owned by Bluetooth SIG, Inc. The "Wi-Fi®" word mark and logos are registered trademarks owned by the Wi-Fi Alliance. Any use of these marks on this website does not imply any affiliation with or endorsement.