



Kingston TECHNOLOGY KF548C38BBA-32 Beast RGB Memory Module Installation Guide

[Home](#) » [Kingston Technology](#) » Kingston TECHNOLOGY KF548C38BBA-32 Beast RGB Memory Module Installation Guide 

Contents

- [1 Kingston TECHNOLOGY KF548C38BBA-32 Beast RGB Memory Module](#)
- [2 Product Information](#)
- [3 How To Install Memory](#)
- [4 Documents / Resources](#)
 - [4.1 References](#)
- [5 Related Posts](#)



Kingston TECHNOLOGY KF548C38BBA-32 Beast RGB Memory Module



Product Information

Memory Installation

Desktop DIMM Installation

Note: Never apply pressure or handle the memory module on or around the Integrated Circuit (IC)! Always handle memory with both hands positioned at the upper-most corners of the Printed Circuit Board (PCB).

1. Disconnect the AC power cord from the back of your desktop PC.
2. Prior to handling the DIMM (Dual Inline Memory Module) or DIMMs, always touch an unpainted and grounded metal object or use a grounded antistatic wrist strap to prevent electrostatic discharge (ESD).
3. If necessary, remove pre-existing DIMMs by pressing down on the lock/ejector tabs. The tabs are located at both ends of the memory socket.
4. Align the memory module key(s) along with the memory socket key(s) for proper installation.
5. Press the memory into the socket until the tabs snap into place and secure the memory module.
6. Replace the computer cover and plug in the AC power cord.

Laptop SO-DIMM Installation

Note: Never apply pressure or handle the memory module on or around the Integrated Circuit (IC)! Always handle memory with both hands positioned at the upper-most corners of the Printed Circuit Board (PCB). Ensure you are working in a static safe environment.

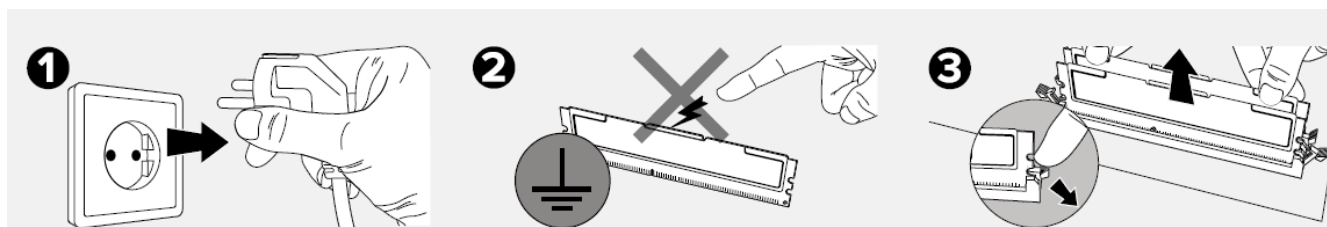
1. Disconnect the DC power adapter from the laptop and remove the battery.
2. Prior to handling the SO-DIMM (Small Outline Dual Inline Memory Module) or SO-DIMMs, always touch an unpainted and grounded metal object or use a grounded antistatic wrist strap to prevent electrostatic discharge (ESD).
3. If necessary, remove pre-existing SODIMMs by gently pulling the lock/ejector tabs (located on both sides of the memory socket) away from the memory module. The memory module will unlock and pop up 30 degrees for removal.
4. Align the memory module key along with the memory socket key and insert the memory at a 30-degree angle.
5. Rotate the memory downward until the lock/ejector tabs engage and click into place.
6. Replace the computer cover and plug in the AC power cord.

How To Install Memory

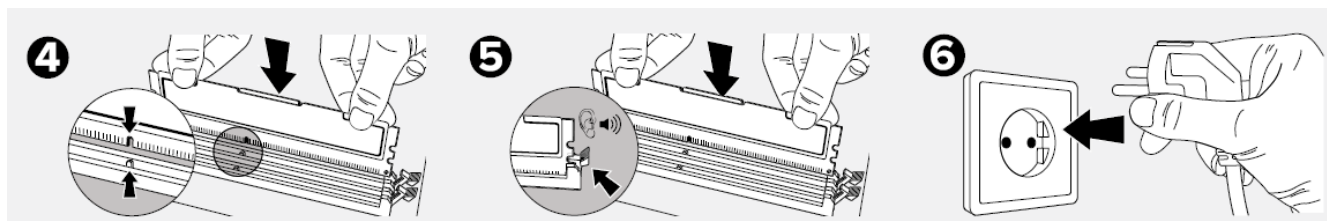
Desktop DIMM Installation

Note: Never apply pressure or handle the memory module on or around the Integrated Circuit (IC)! Always handle memory with both hands positioned at the upper-most corners of the Printed Circuit Board (PCB).

1. Disconnect the AC power cord from the back of your desktop PC.
2. Prior to handling the DIMM (Dual Inline Memory Module) or DIMMs, always touch an unpainted and grounded metal object or use a grounded antistatic wrist strap to prevent electrostatic discharge (ESD).
3. If necessary, remove pre-existing DIMMs by pressing down on the lock/ejector tabs. The tabs are located at both ends of the memory socket.



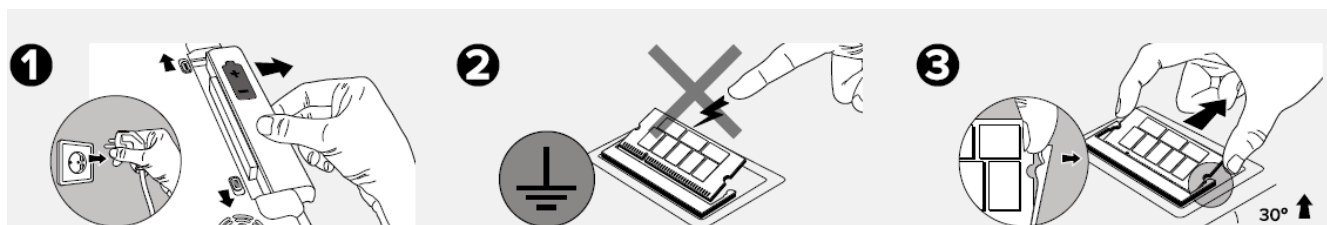
4. Align the memory module key(s) along with the memory socket keys(s) for proper installation.
5. Press the memory into the socket until the tabs snap into place and secure the memory module.
6. Replace the computer cover and plug in the AC power cord.



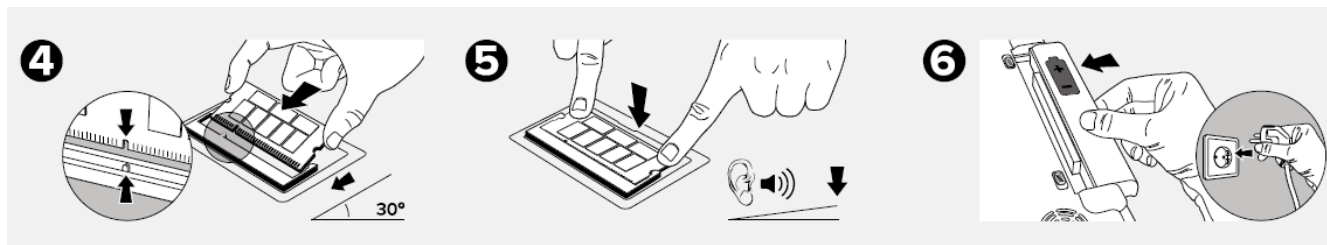
Laptop SO-DIMM Installation

Note: Never apply pressure or handle the memory module on or around the Integrated Circuit (IC)! Always handle memory with both hands positioned at the upper-most corners of the Printed Circuit Board (PCB). Ensure you are working in a static safe environment.

1. Disconnect the DC power adapter from the laptop and remove the battery.
2. Prior to handling the SO-DIMM (Small Outline Dual Inline Memory Module) or SO-DIMMs, always touch an unpainted and grounded metal object or use a grounded antistatic wrist strap to prevent electrostatic discharge (ESD).
3. If necessary, remove pre-existing SO-DIMMs by gently pulling the lock/ejector tabs (located on both sides of the memory socket) away from the memory module. The memory module will unlock and pop-up 30 degrees for removal.



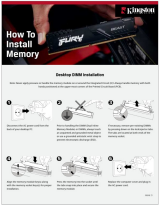
4. Align the memory module key along with the memory socket key and insert the memory at a 30-degree angle.
5. Rotate the memory downward until the lock/ejector tabs engage and click into place.
6. Replace the computer cover and plug in the AC power cord.



THIS DOCUMENT SUBJECT TO CHANGE WITHOUT NOTICE.

©2023 Kingston Technology Corporation, 17600 Newhope Street, Fountain Valley, CA 92708 USA. All rights reserved. Kingston Technology and the Kingston logo are either registered trademarks or trademarks of Kingston Technology Company, Inc. All trademarks and registered trademarks are the property of their respective owners. Contest winners shall be responsible for all taxes, licenses and fees. Kingston reserves the right to add, modify or delete any of the policies and/or awards at any time with or without prior notice. Printed in the USA

Documents / Resources

	<p>Kingston TECHNOLOGY KF548C38BBA-32 Beast RGB Memory Module [pdf] Installation Guide</p> <p>KF548C38BBA-32, KF548C38BBA-32 Beast RGB Memory Module, Beast RGB Memory Module, RGB Memory Module, Memory Module, Module</p>
---	---

References

- [User Manual](#)