



Kings Dart 3663107 Dartworld C1 Smart Dartboard User Manual

[Home](#) » [Kings Dart](#) » Kings Dart 3663107 Dartworld C1 Smart Dartboard User Manual 

Kings Dart 3663107 Dartworld C1 Smart Dartboard User Manual



Contents

- 1 Congratulations!
- 2 Accessories:
- 3 PRODUCT SPECIFICATION
- 4 Installation
- 5 IMPORTANT NOTE!
- 6 Installation
- 7 FCC Statement:
- 8 IC statement:
- 9 Ground rules for all darts games:
- 10 Contents of a Dart board
- 11 Important Notes
- 12 Notes on disposal
- 13 Sport-Time
- 14 Documents / Resources
 - 14.1 References
- 15 Related Posts

Congratulations!

We hope that you receive many years of safe family fun with your new dart board.



Please keep your instructions!

- Your Model number is needed when you contact us.
- Please read through this instruction book to familiarize yourself with the programming.
- Please check whether the set is complete.
- Please only use Soft-Darts



Contact Information:

c/o Sport-Thieme GmbH
Helmstedter Straße 40
38368 Grasleben
www.sporttime.de



Warning!

- Please keep the darts out of children's reach.
- This is not a child's toy. Adult supervision is required for children playing this game.
- Please read instructions carefully. Proper use of this set can avoid damage or injury.



Tools required for mounting:

- Phillips and Slotted Head Screwdrivers, Power Driver

Side



Einschalttaste
Power Button

Batterie Abdeckung
kompatibel mit 2x AA Batterie
Battery Cover
(required 2AA battery)

Front

Doppel Ring
Double Ring

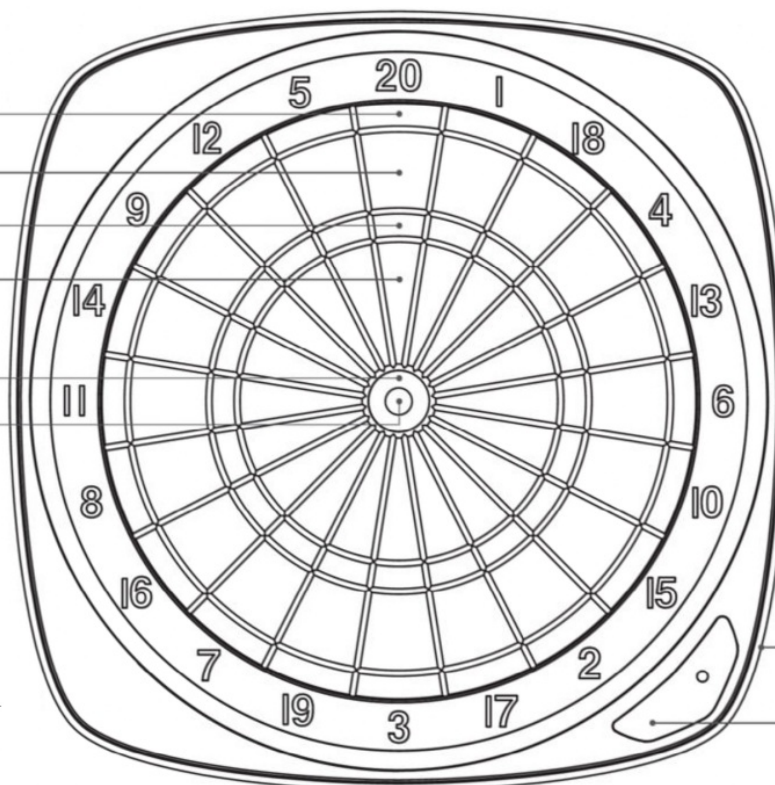
Einzel Ring
Single Ring

Dreifach Ring
Triple Ring

Einzel Ring
Single Ring

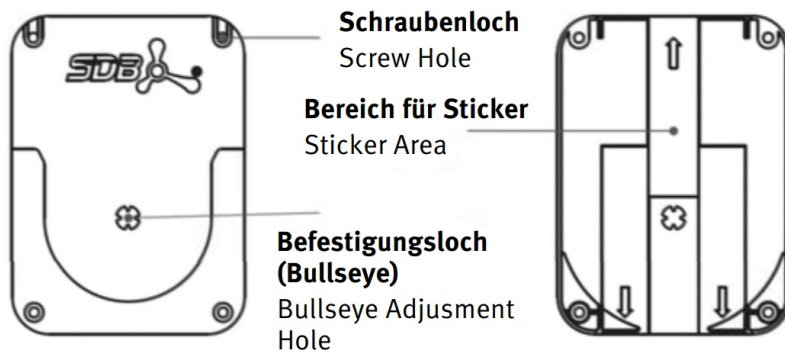
Einfaches Bullseye
Single Bullseye

Doppel Bullseye
Double Bullseye

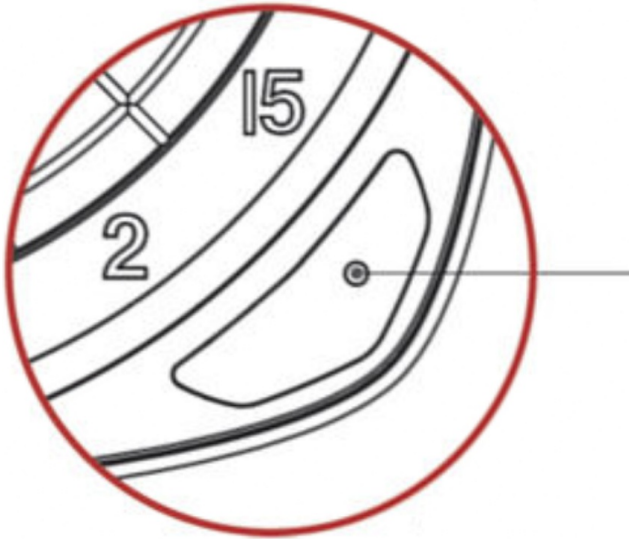


Zurück-Taste
Back Button

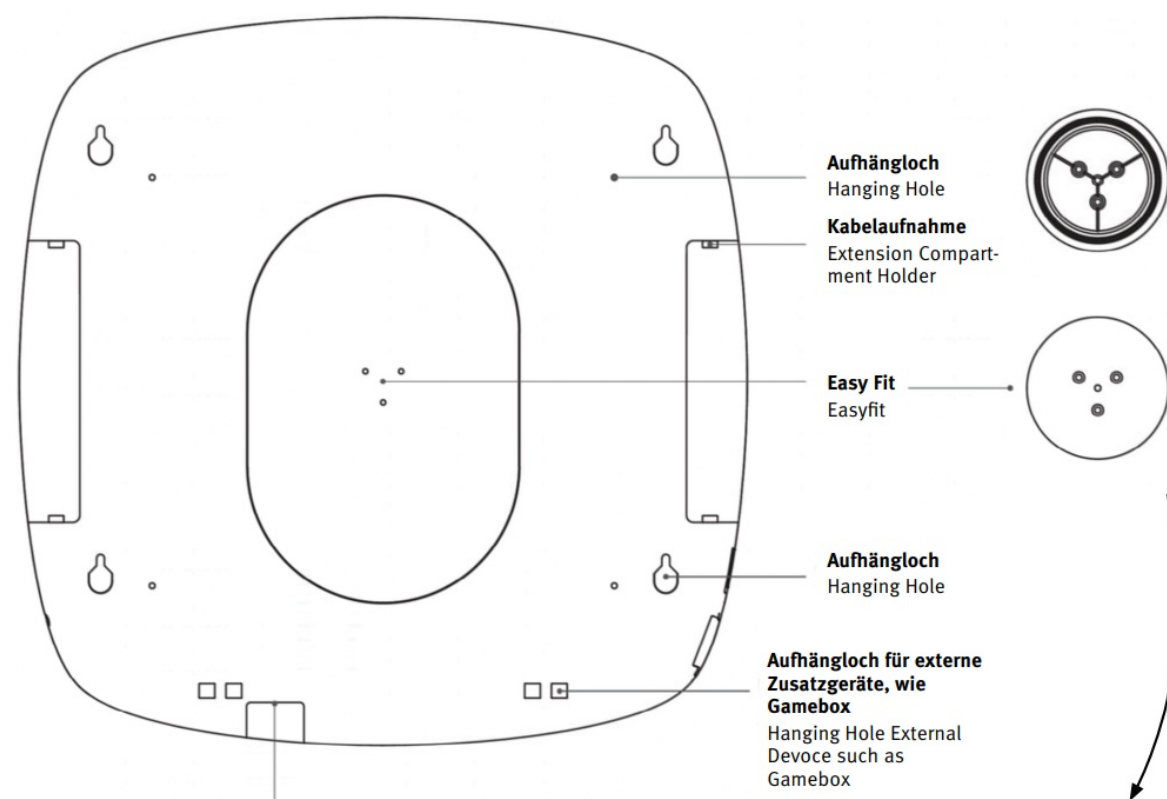
Start-Taste
Start Button



Bluetooth/Battery Indicator LED



- **Red LED Blinking:** waiting for connection
- **Blue LED On:** device connected
- **Red LED On:** connected with an external device such as Game box



Micro USB

- Compatible with 5V/1AA CA adaptors power supply
- when plugged, battery protection system will be activated to protect battery from damage by external electric current
- the C1 Dartboard can be used with batteries or the USB-C wire with power adapter as well
- Compatible with external device such as Game box.

EasyFit plate had installed onto dartboard backside, using wall bracket to perform instant assembly, when using EasyFit it required 5 mm EVA pad to make the dartboard perpendicular with floor, to perform best result of the game play. When using EasyFit, the noise reduction will perform worse than directly install the board to the wall. When EasyFit completely installed per installation manual, it can hold up to 5kg weight force safely.

Accessories:

- Soft Tip 30 x



- Barrel 6 x



- Shaft 6 x



- Flight 6x



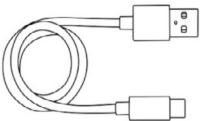
- Wall Plug Fisher x 4



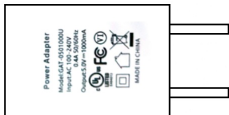
- Screw x 4



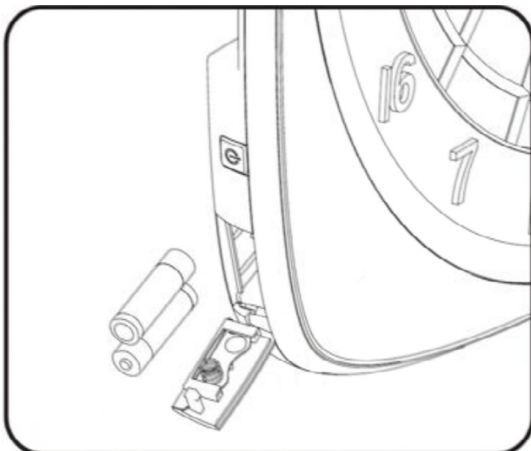
- USB-C wire 1x



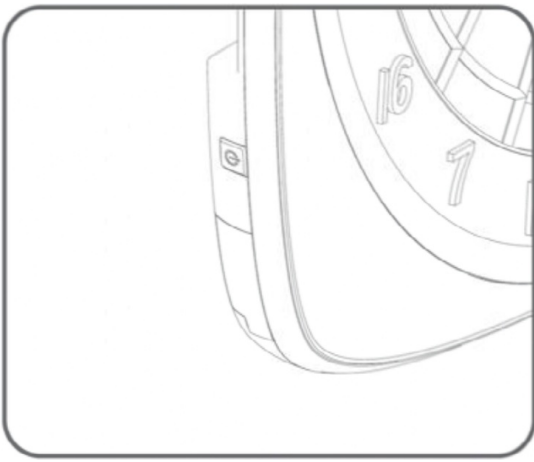
- Power adapter 1x



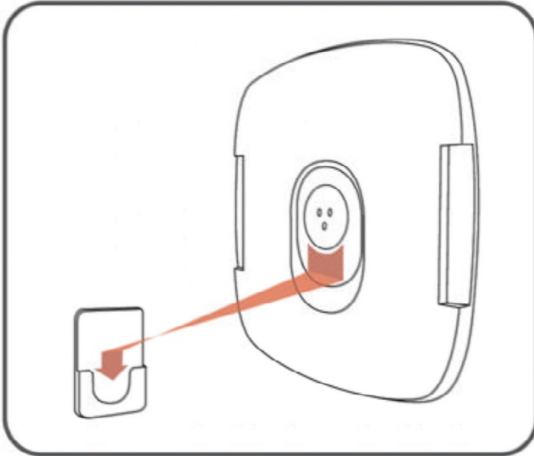
1. Install 2 AA batteries



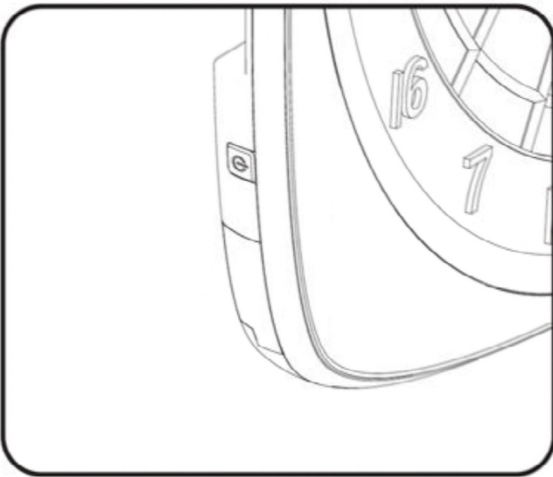
2. Make sure battery cover is closed and secure.



3. Hang dartboard onto proper position



4. Press the Power switch down to turn the dartboard on

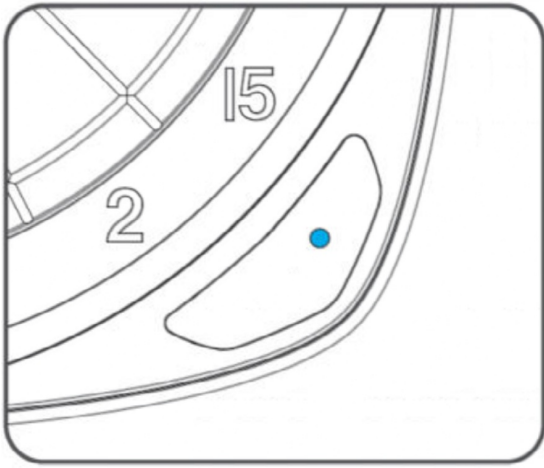


5. Download SDB apps and sign up



Please scan QR code to get APP

6. LED turns BLUE for complete connection



PRODUCT SPECIFICATION

Item No : SDBC400ARA

Bluetooth ver : Bluetooth 4.0

Dimension : 510 x 510 x 36.5 mm

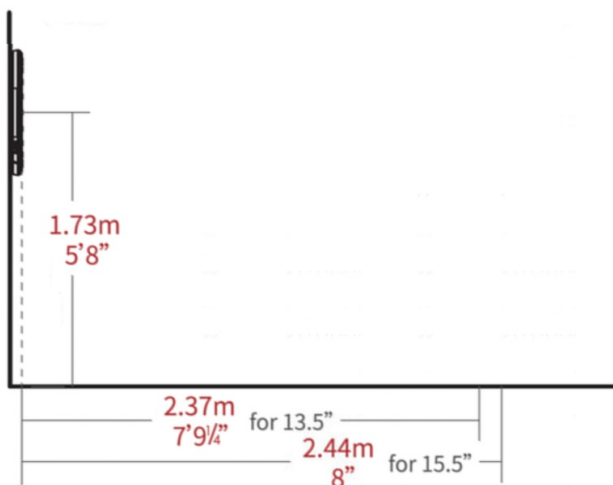
Weight : ±1.8 kgs

Power Input : 5V/1A or 2x AA Battery

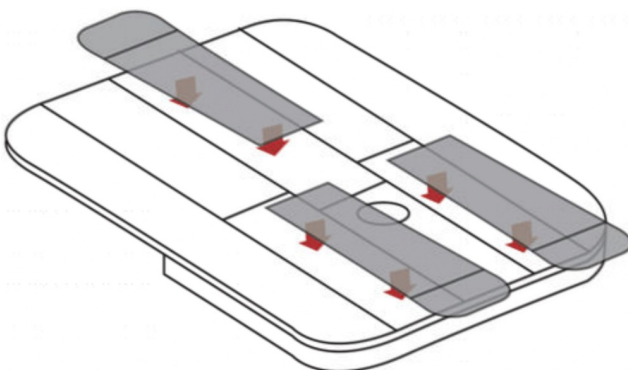
Power : 100 mW

Installation

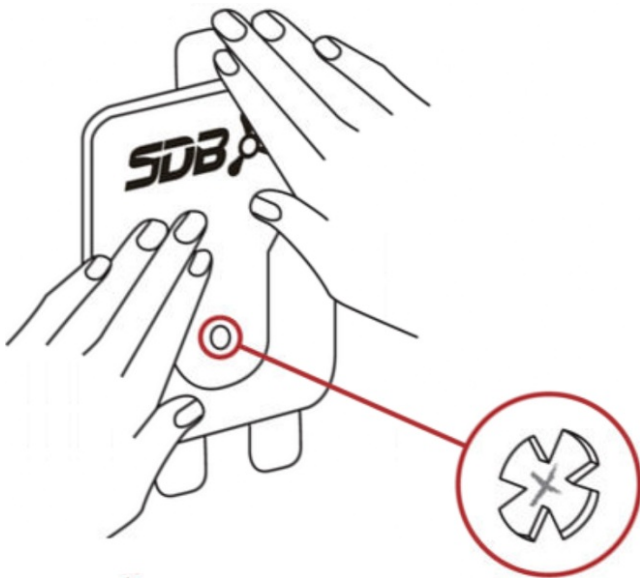
1. Mark dartboard center point position.



2. Add adhesive sticker onto EasyFit backside at position shown in the diagram below.

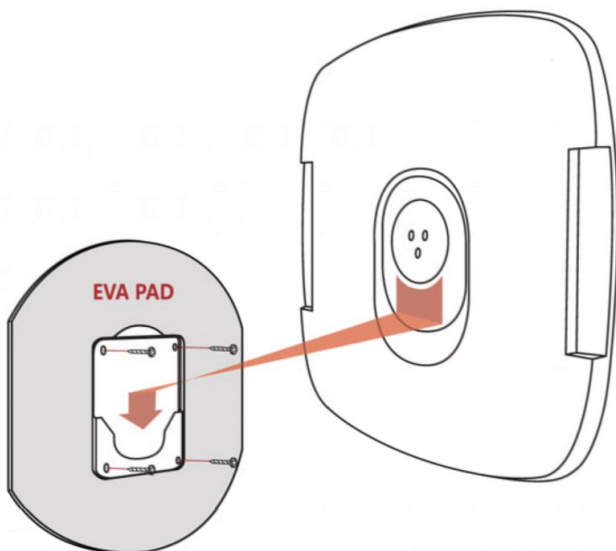


3. Install the Easyfit bracket by pressing it firmly against the wall



Important Note!

4. Put the EVA Pad into the Easyfit mounting bracket. Guide the circle shaped hanger on the backside of the dartboard into the grooved slot of the Easyfit mounting bracket.



IMPORTANT NOTE!

- For added security, install 4 screws through the bracket into the wall.
- Do not install the mounting bracket on a surface with fabric. The adhesive is at risk to detach causing the dartboard to fall.
- Do not install the dartboard in any area where valuables people or animals could be present. Avoid mounting above sofas, beds and chairs to prevent any chance of injury.

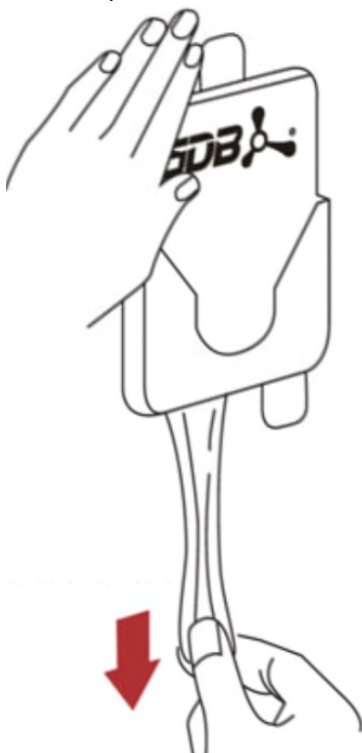
REMOVING THE DARTBOARD AND BRACKET



Pull down in perpendicular direction.



Need to pull down until its stretched more than 12 inches / 30 cm



1. Remove the dartboard.
2. Holding the EasyFit bottom groove as shown in the diagram.
3. Gently pull-off both sticker on bottom side.
4. Gently pull-off the sticker on top side

Note

TRANSPORTATION

Do not place any objects on the surface of the dartboard o prevent dartboard sensor from not-registered issue.

Installation

Always make sure the walls are clean before assembling the EasyFit hanger bracket to ensure it will stick well.

In Usage

Turn on the dartboard FIRST and then open the SDB APP on your mobile device. The APP will then find and connect to the dartboard automatically.

If connection fails, please turn-off and restart both dartboard and mobile device, then follow again step 1. If still connection fails, please use the customer feedback service which integrated on apps to send customer feedback. Check your mobile device to make sure Bluetooth is enabled and ON.

Please use soft-tip darts and never use steel-tip darts or it may damage your dartboard.

If a dart tip breaks and gets stuck in the dartboard, carefully use pliers to remove the broken tip from the dartboard. Never push the tip fragment into the dartboard.

FCC Statement:

This device complies with part 15 of the FCC Rules. Operation is subject to the following two conditions:

1. This device may not cause harmful interference, and
2. this device must accept any interference received, including interference that may cause undesired operation.

NOTE: This equipment has been tested and found to comply with the limits for a Class B digital device, pursuant to part 15 of the FCC Rules. These limits are designed to provide reasonable protection against harmful interference in a residential installation.

This equipment generates, uses and can radiate radio frequency energy and, if not installed and used in accordance with the instructions, may cause harmful interference to radio communications. However, there is no guarantee that interference will not occur in a particular installation. If this equipment does cause harmful interference to radio or television reception, which can be determined by turning the equipment off and on, the user is encouraged to try to correct the interference by one or more of the following measures:

- Reorient or relocate the receiving antenna.
- Increase the separation between the equipment and receiver.
- Connect the equipment into an outlet on a circuit different from that to which the receiver is connected.
- Consult the dealer or an experienced radio/TV technician for help.

Changes or modifications not expressly approved by the party responsible for compliance could void the user's authority to operate the equipment.

IC statement:

This device contains license- exempt transmitter(s) that comply with Innovation, Science and Economic Development

Canada's licence-exempt RSS(s). Operation is subject to the following two conditions:

Ground rules for all darts games:

1. To evaluate the starting player, each player throws one dart at the board. The player (or team) closest to the center starts the game.
2. Each player has 3 darts, and 3 throws, accordingly
3. Now throwing starts and continues alternately. Each player throws 3 darts.
4. During the throw both feet are to be placed entirely behind the toe line (Oche).
5. Hits will only be counted if they're still stuck after the last dart has been thrown.
6. Bounced-off darts, or darts falling down from the board before the last dart has been thrown, will not be counted.
7. If a dart gets stuck on or beside an already sticking dart (so-called „Robin Hood“), it will not be counted
8. Most tournaments count down from 301 or 501 points.
9. The goal: reaching exactly 0 (zero), as fast as possible. Reaching a negative score („over-throw“) with a dart is invalid; this dart will not be counted and the player must retire until the next turn.
10. Pros play Double-Out: the last dart must hit a double field.

Contents of a Dart board

A dart board is divided into 20 segments, each one carrying different values, from 1 to 20. In the center lies the red Bull's Eye (value 50 points), surrounded by the green Single Bull ring (25 points). The segments are interrupted by additional, smaller rings: the larger outer ring fields double this segment's score, the smaller, inner ring fields triple it.

By the way: You don't score the most points by hitting the Bull's Eye (50) – but by hitting the „triple 20“ ring segment (60)



Caring for your Electronic Dartboard

1. Never use metal tipped darts on this dartboard. Metal tipped darts will seriously damage the circuitry and electronic operation of this dartboard.
2. Do not use excessive force when throwing darts. Throwing darts too hard will cause frequent tip breakage and cause excess wear on the board.
3. Turn darts clockwise as you pull them from the board. This makes it easier to remove darts and extends the life of the tips.

4. Use only the A/C adapter that comes with the dartboard. Using the wrong adapter may cause electrical shock and damage to the electronic circuits.
5. Remove the batteries when not in use or if using the optional A/C adapter. This will prolong the life of your batteries.
6. Do not spill liquids on the dartboard. Do not use spray cleaners, or cleaners that contain ammonia or other harsh chemicals as they may cause damage.

Important Notes

Stuck Segment:

Occasionally, a dart will cause a segment to become wedged within the segment separator web. If this happens, all games will be suspended and the LCD display will indicate the segment number that is stuck.

To free the segment, simply remove the dart or broken tip from the segment. If the problem is still not solved, try wiggling the segment until it is loose. The game will then resume where it left off.

Broken Tips:

From time to time a tip will break off and become stuck in the segment. Try to remove it with a pair of pliers or tweezers by grasping the exposed end and pulling it out of the segment. If this is not possible, you can attempt to push the tip through to the back of the segment. Use a nail that is smaller than the hole and gently push the tip until it falls through the other side. Be careful not to push too far and damage the circuitry behind the segment. Don't be alarmed if tips break. This is a normal occurrence when playing soft tip darts. We included a pack of replacement tips which should keep you supplied for quite some time. When replacing tips, make sure you use the same type of tips that come with this dartboard.

Darts:

It is recommended that you use the enclosed darts on this dartboard. Using other darts may cause damage to the segment and electronic circuit. Replacement tips are available at most retailers carrying dart products

Cleaning The Electronic Dartboard:

Your electronic dartboard will provide many hours of competition if cared for properly. Regular dusting of the cabinet is recommended using a damp cloth. A mild detergent can be used if necessary.

The use of abrasive cleaners or cleaners that contain ammonia may cause damage and should not be used. Avoid spilling liquid onto the target area since it can result in permanent damage.

Notes on disposal

This electrical or electronic appliance must not be disposed of with household waste at the end of its service life. Free collection points for old electrical appliances are available in your area, as well as other collection points for reuse of the appliances. You can obtain the addresses from your city or local government. If the old electrical or electronic equipment contains personal data, you are responsible for deleting it yourself, before returning it. If it is possible to do so without destroying the old electrical or electronic equipment, please remove old batteries or accumulators and old lamps before returning them for disposal and take them to a separate collection point.



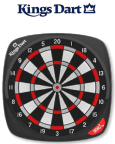
Meaning of the “crossed-out wheeled bin” symbol

The symbol of a crossed-out wheeled bin regularly displayed on electrical and electronic equipment indicates that the respective device must be collected separately from unsorted municipal waste at the end of its service life.

Thank you very much for choosing a Sportime product. Should you have any questions, we are happy to help.



Documents / Resources

 <p>Kings Dart Smart-Dartboard „Dartworld C1“ Kings Dart Smart-Dartboard „Dartworld C1“ Kings Dart Smart-Dartboard „Dartworld C1“</p>	<p>Kings Dart 3663107 Dartworld C1 Smart Dartboard [pdf] User Manual Dartworld C1, 3663107, 3663107 Dartworld C1 Smart Dartboard, Dartworld C1, Smart Dartboard, Dartworld C1 Smart Dartboard, 3663107 Smart Dartboard, Dartboard</p>
--	---

References

- [S Sportime Onlineshop - Alles für deinen Freizeitspaß bestellen](#)
- [S Sportime Onlineshop - Alles für deinen Freizeitspaß bestellen](#)