



## KINGFORCE Keyless Entry Door Lock with Keypad User Guide

[Home](#) » [KINGFORCE](#) » KINGFORCE Keyless Entry Door Lock with Keypad User Guide 

KINGFORCE Keyless Entry Door Lock with Keypad



## Contents

- [1 Programming Instructions](#)
- [2 Restore To Factory Default Settings](#)
- [3 Documents / Resources](#)
  - [3.1 References](#)
- [4 Related Posts](#)

## Programming Instructions

### Important

For your security, please change the default master password to reduce the risk of password compromise.

Default Master Code: 123456.

Customizable Access Code: 4-10 digits.

- **note:** KingForce is the Multi-Function button in Exterior Assembly.

#### 1. Change Master Code

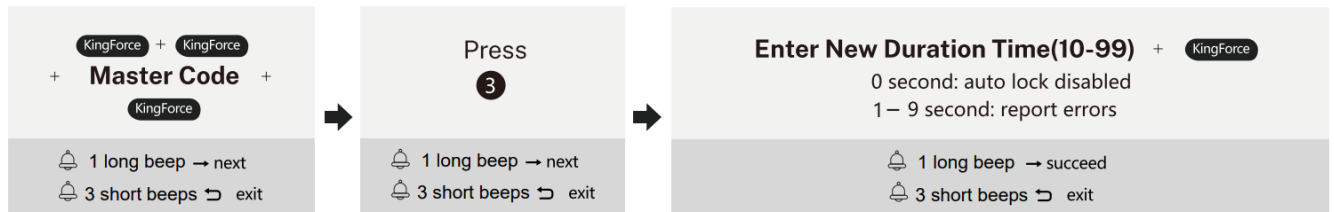
 default master code:123456



## 2. Add User Code



## 3. Set Auto Lock Time Delay

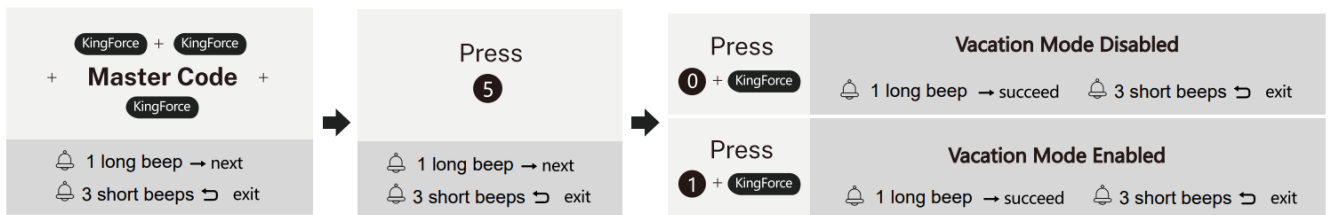


## 4. Add One-Time Code

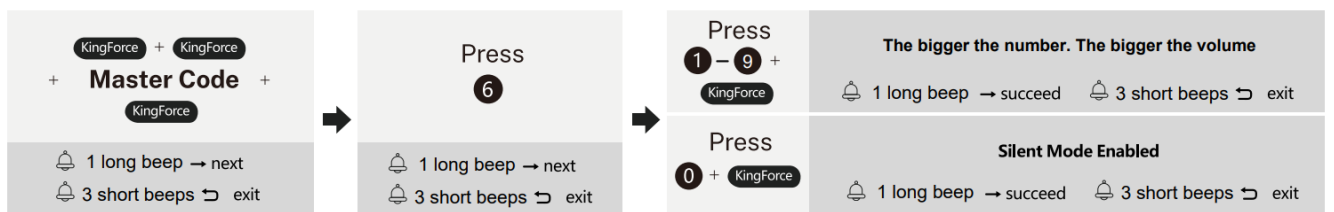


## 5. Vacation Mode

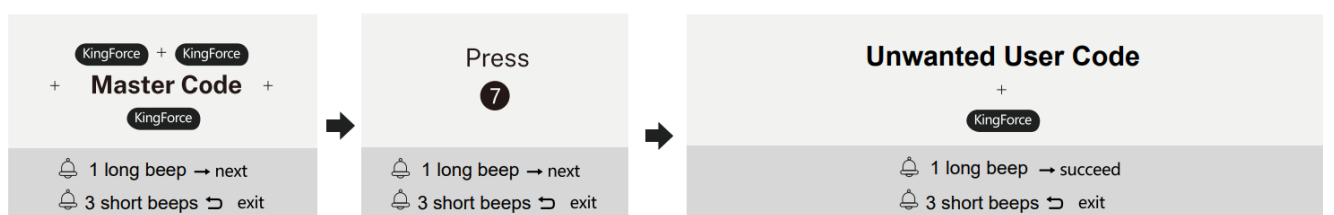
**Note:** While Vacation mold enabled, if you use master code to unlock or enter management mode, then Vacation mode will be disabled.



## 6. Silent Mode and modulation



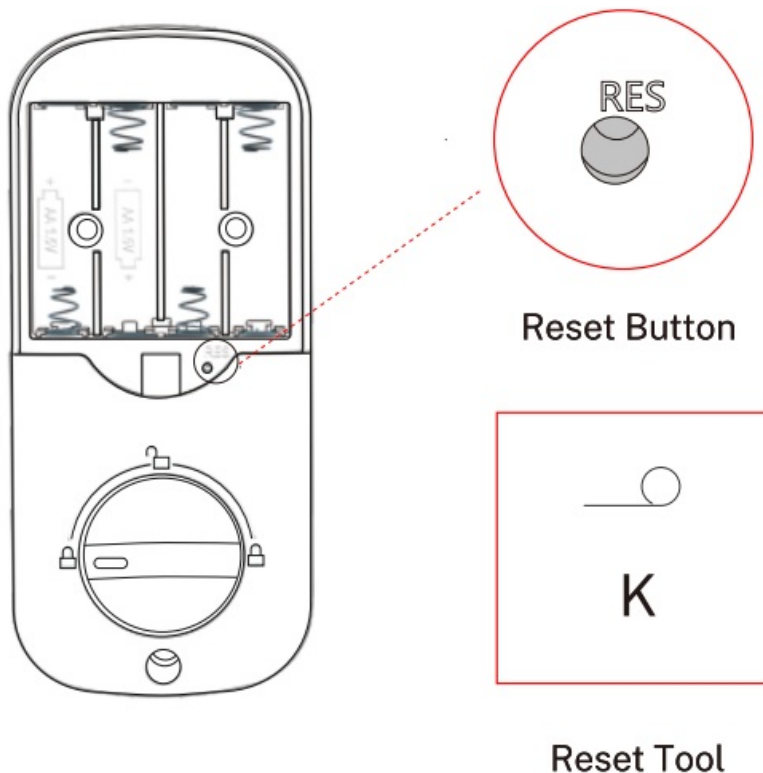
## 7. Delete User Code



## Restore To Factory Default Settings

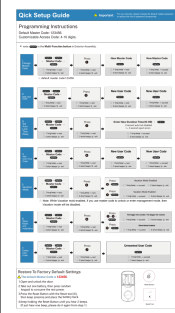
 The default Master Code is

1. Open and unlock the door.
2. Take out one battery, then press random keypad to consume the rest power.
3. Press the Reset Button with the Reset tool (K), then keep pressing and place the battery back.
4. Keep holding the Reset Button until you hear 2 beeps. (If just hear one beep, please do it again from step 1)



---

## Documents / Resources

	<p><a href="#">KINGFORCE Keyless Entry Door Lock with Keypad</a> [pdf] User Guide</p> <p>Keyless Entry Door Lock with Keypad, Entry Door Lock with Keypad, Door Lock with Keypad, Lock with Keypad, Keypad</p>
---	--

## References

- [User Manual](#)

This website is an independent publication and is neither affiliated with nor endorsed by any of the trademark owners. The "Bluetooth®" word mark and logos are registered trademarks owned by Bluetooth SIG, Inc. The "Wi-Fi®" word mark and logos are registered trademarks owned by the Wi-Fi Alliance. Any use of these marks on this website does not imply any affiliation with or endorsement.