



KINGFORCE D1 Keyless Entry Door Lock with Handle Installation Guide

[Home](#) » [KINGFORCE](#) » KINGFORCE D1 Keyless Entry Door Lock with Handle Installation Guide 

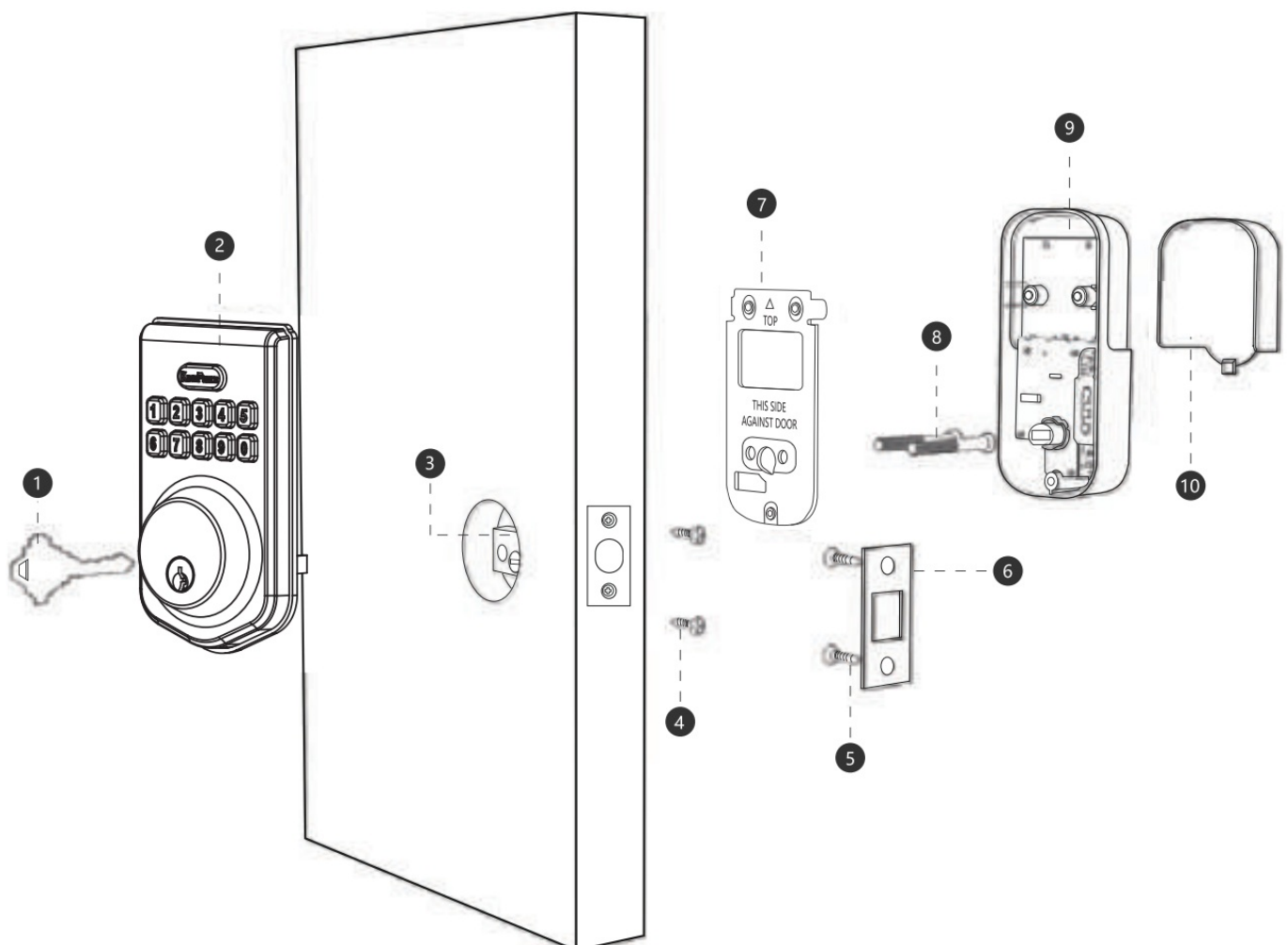
KINGFORCE D1 Keyless Entry Door Lock with Handle Installation Guide



Contents

- 1 Overall
- 2 Part List
- 3 Adjustable Deadbolt Lat: Set
- 4 Installation Guide
- 5 Factory Default Settings
- 6 Definitions
- 7 Parts illustrations
- 8 Programming Instructions
- 9 FCC Statement
- 10 Quick Set Up
- 11 Restore To Factory Default Settings
- 12 Documents / Resources
 - 12.1 References
- 13 Related Posts

Overall

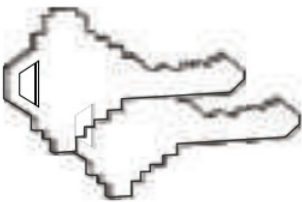
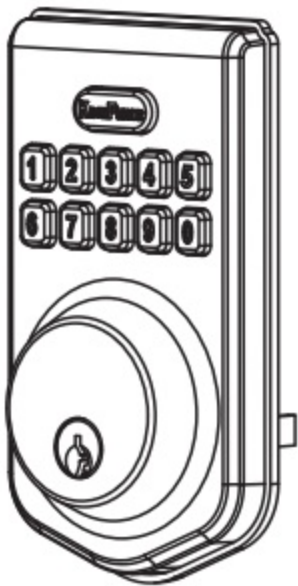
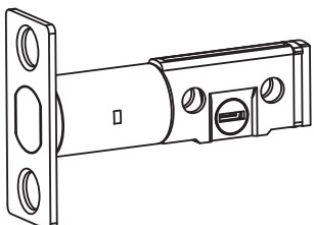

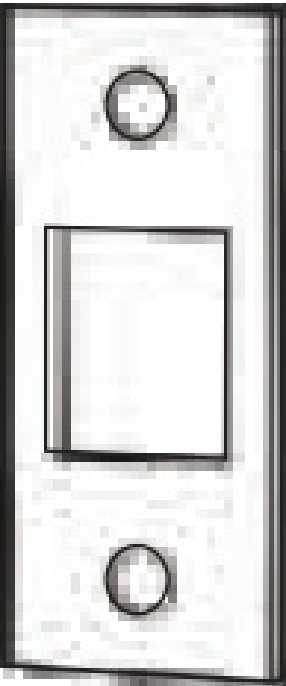


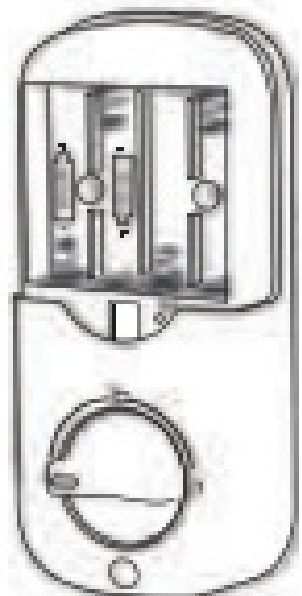


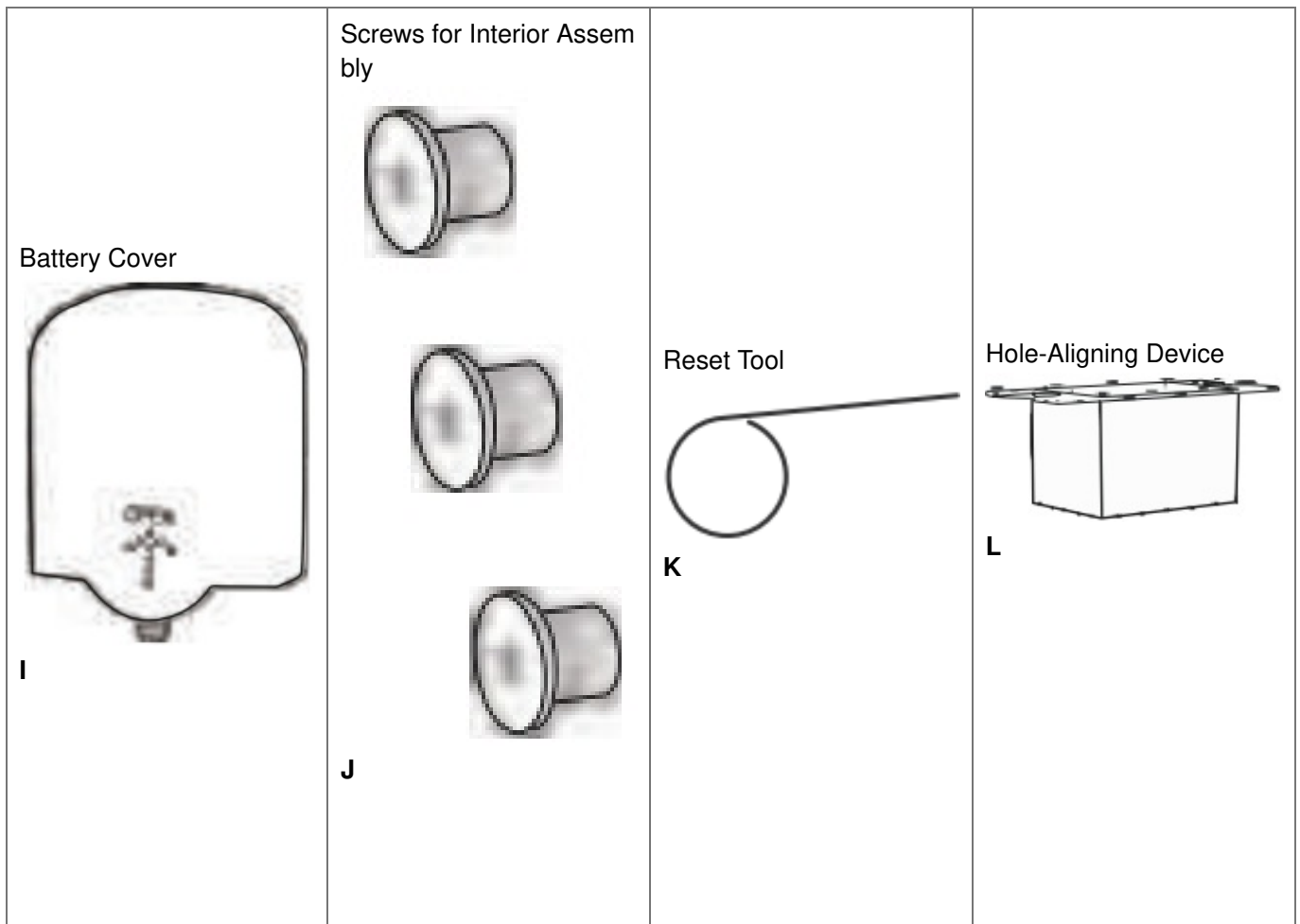
- 1. Backup Key
- 2. Exterior Assembly
- 3. Latch
- 4. Screw
- 5. screw

6. Striking Plate
7. Mounting Plate
8. Screw
9. Interior Assembly
10. Battery Cover

Tips: Specifications are subject to change without prior notice

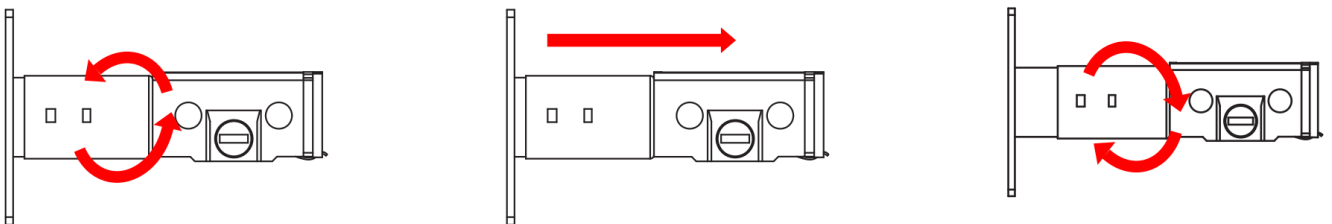
Part List

<p>Backup Key</p>  <p>A</p>	<p>Exterior Assembly</p>  <p>B</p>	<p>Latch</p>  <p>C</p>	<p>Screws for Latch/Striking Plate</p>  <p>D</p>
<p>Striking Plate</p>  <p>E</p>	<p>Mounting Plate</p>  <p>F</p>	<p>Screws for Mounting Plate and Exterior Assembly</p>  <p>G</p>	<p>Interior Assembly</p>  <p>H</p>

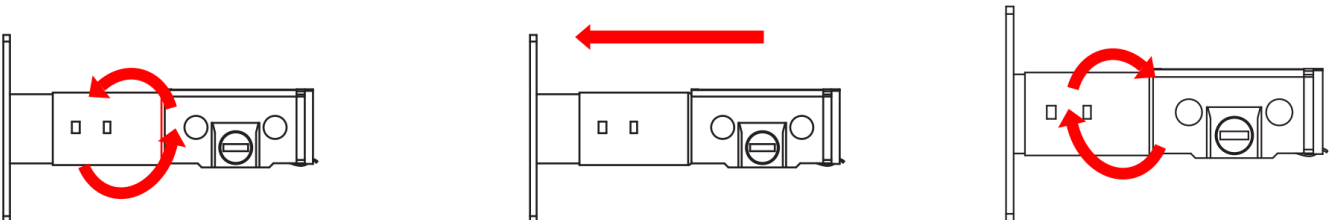


Adjustable Deadbolt Lat: Set

1. TO CONVERT BACKSET FROM 2-3/8" (60mm) TO 2-3/4" (70mm) a. Rotate the latch in a clockwise direction, then pull out, and twist the extension plate in an anti clockwise direction until hear a lock sound.



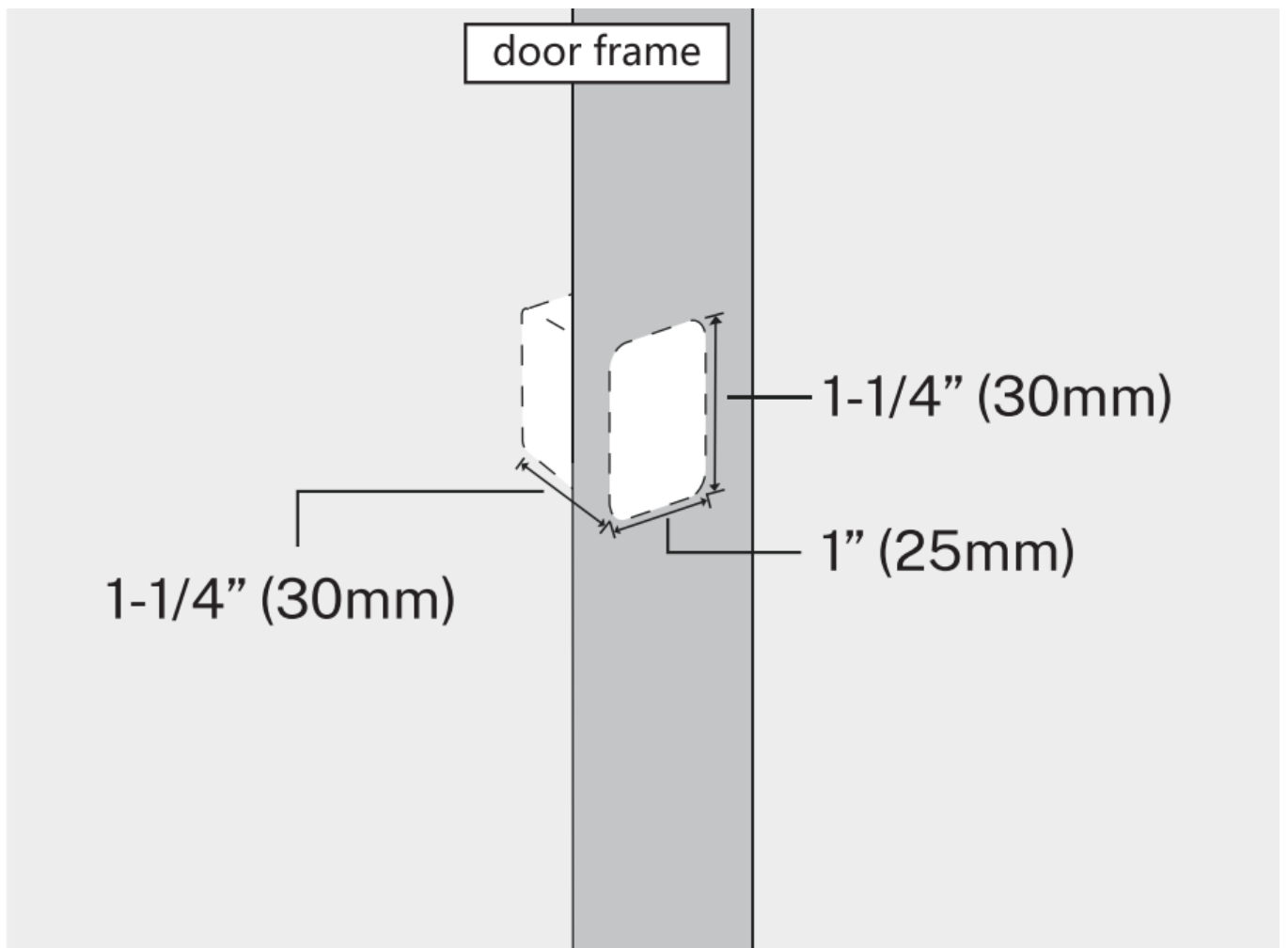
2. TO CONVERT BACKSET FROM 2-3/4" (70mm) TO 2-3/8" (60mm) a. Rotate the latch in an clockwise direction, then push in until the end, and twist the extension plate in an anticlockwise direction until hear a lock sound.



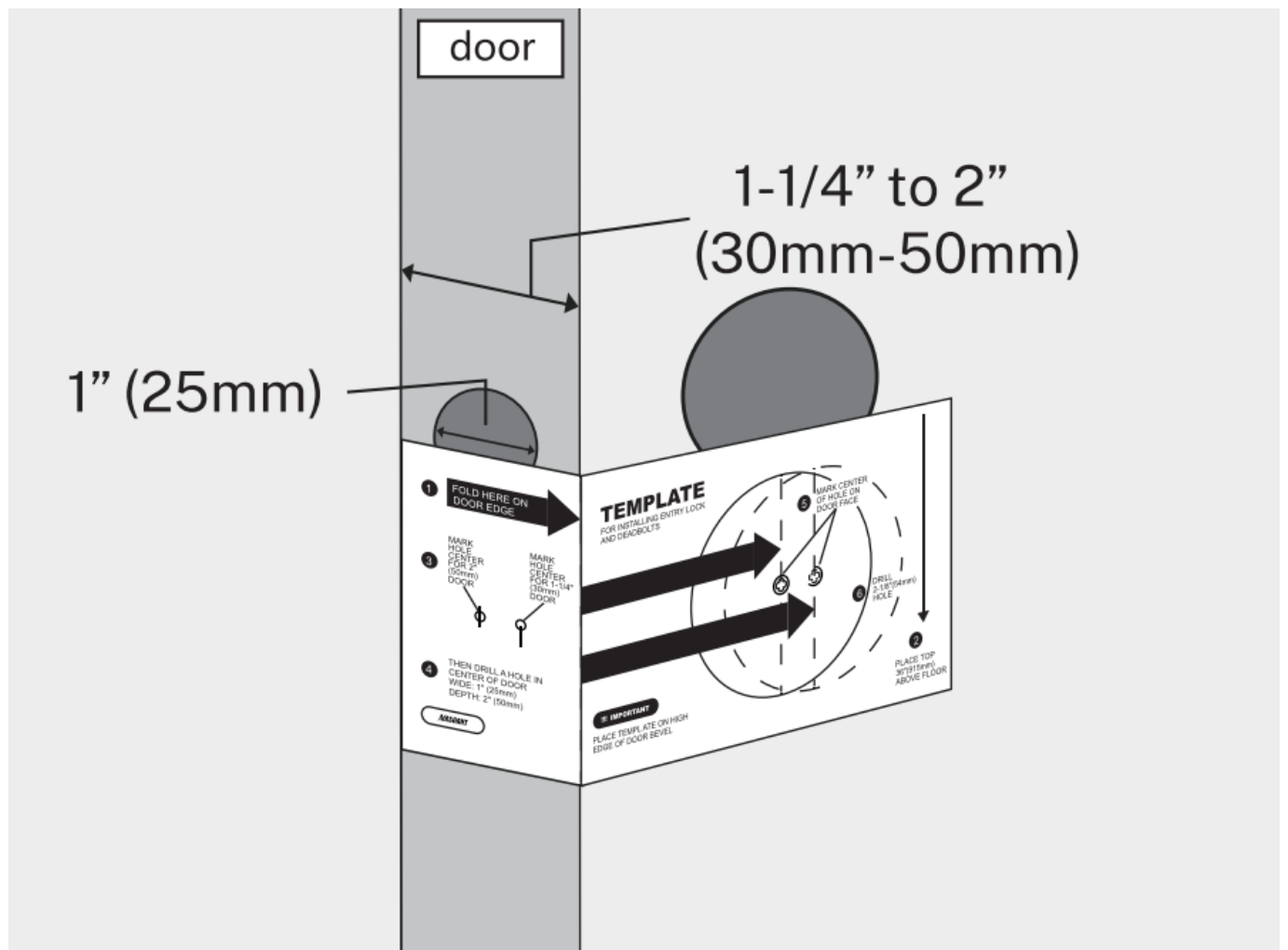
Installation Guide

PREPARE THE DOOR AND CHECK DIMENSIONS (with the TEMPLATE card)

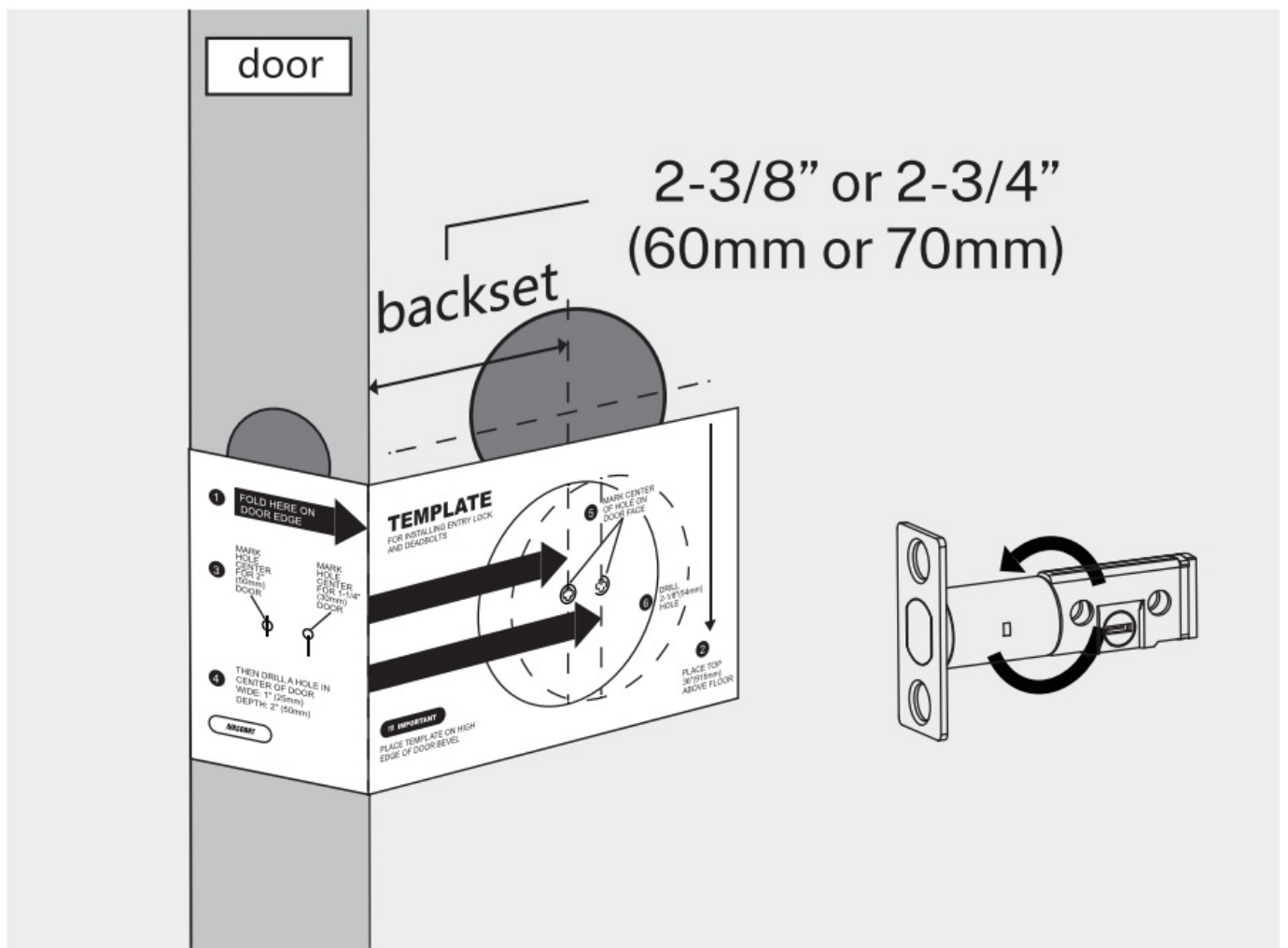
A : Measure to confirm the size of hole in the door frame. The wide is 1"(25mm), the length is 1-1/4"(30mm), the depth is 1-1/4" (30mm).



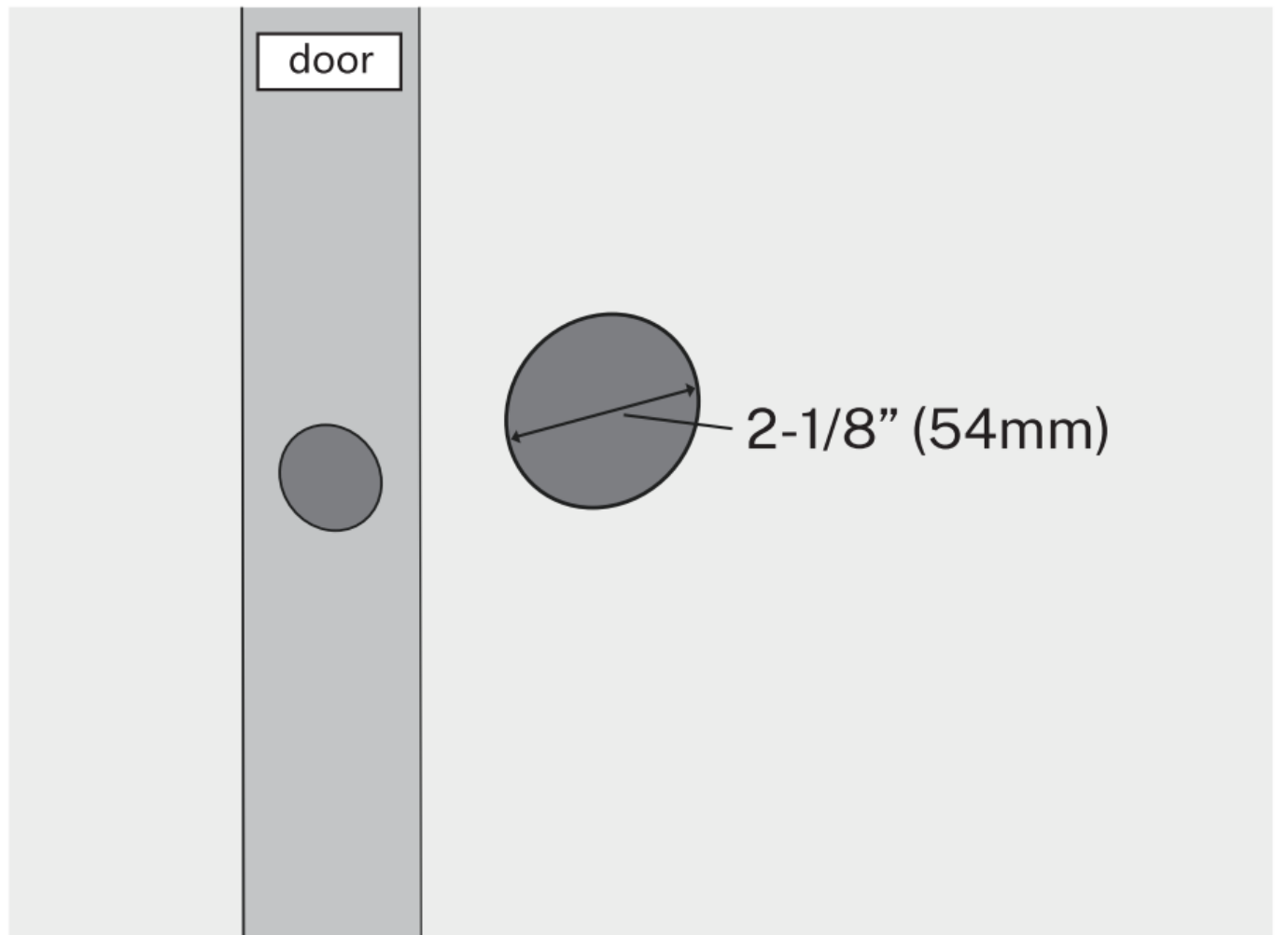
B : Measure to confirm the thickness of door is 1-1/4" to 2" (30mm-50mm), the hole in the side of door is 1" (25mm).



C : Measure to confirm the backset is 2-3/8" or 2-3/4" (60mm or 70mm). And adjust the length of the latch accordingly.

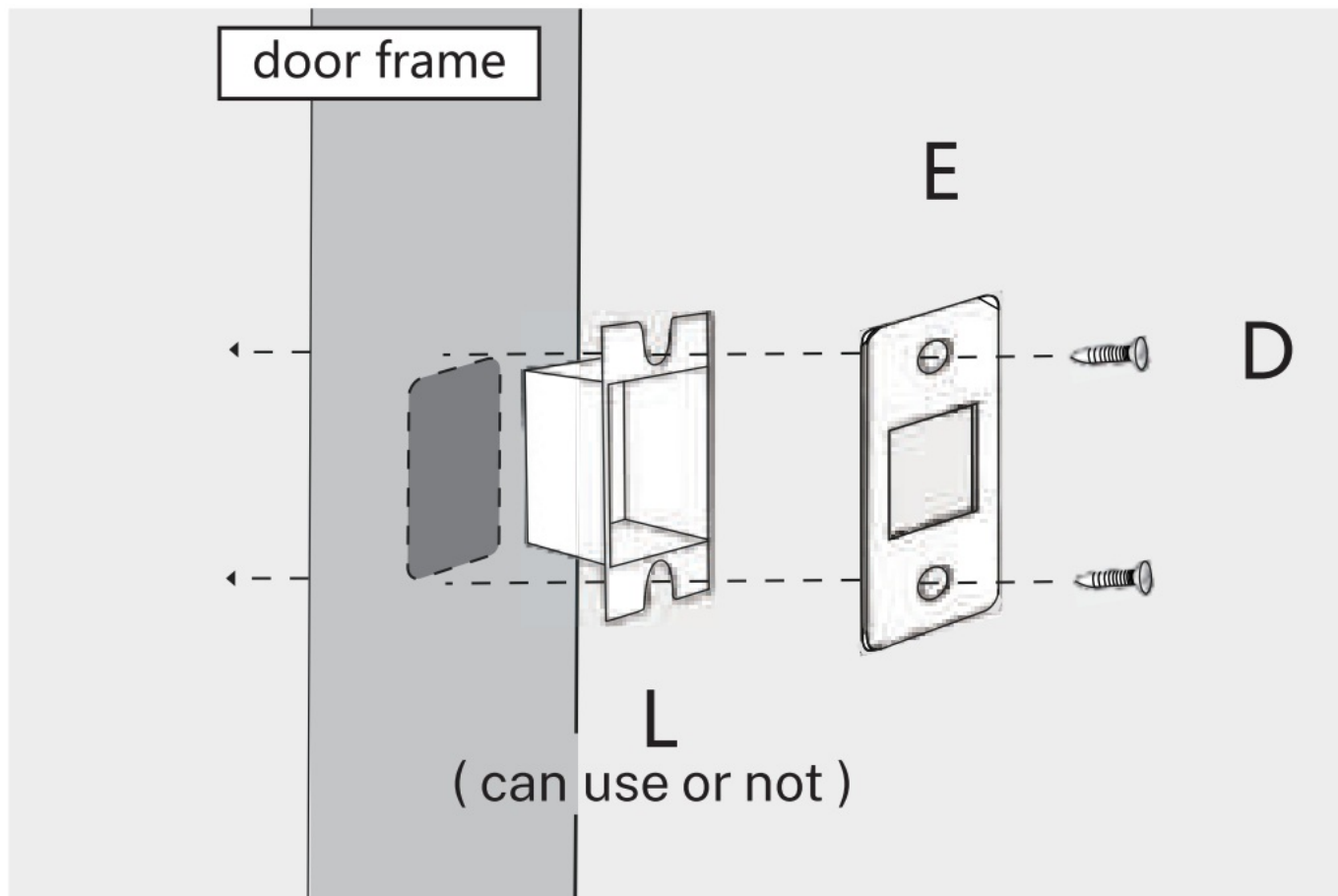


D : Measure to confirm the size of hole in the door is 2-1/8" (54mm).

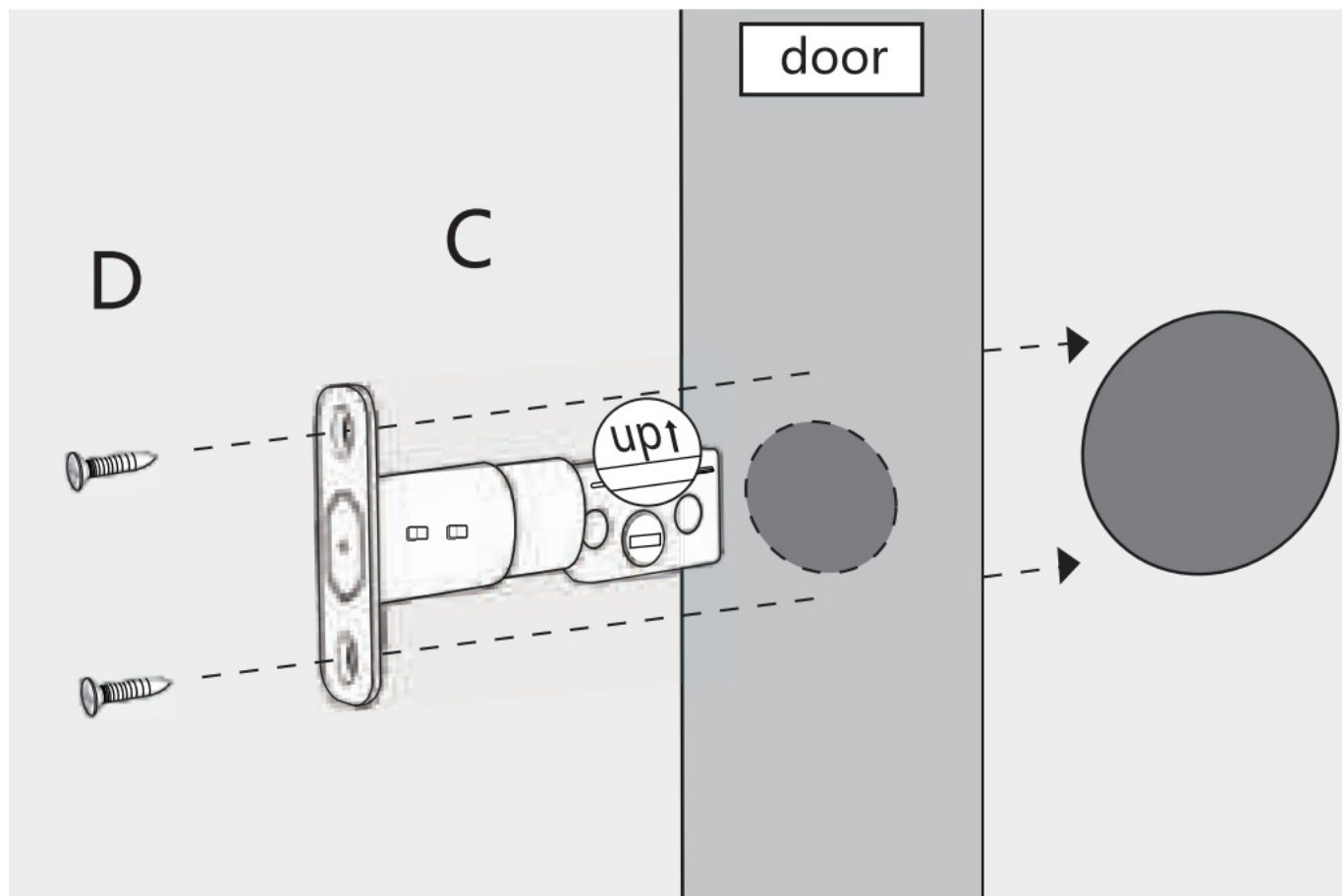


INSTALL THE LATCH AND STRIKING PLATE

A : Install striking plate and hole-aligning device in the door frame with two screws (D) provided.

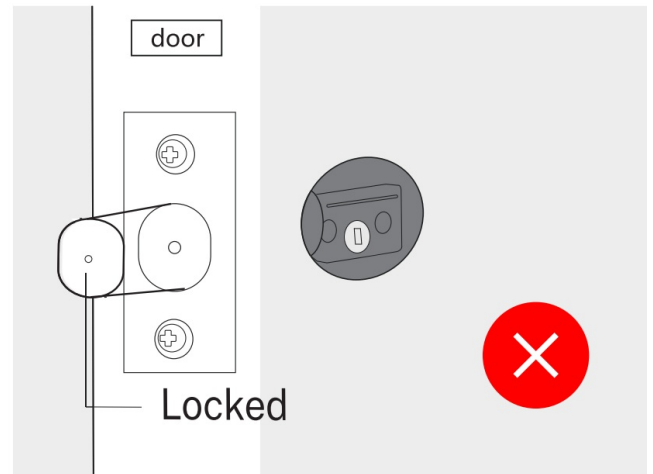
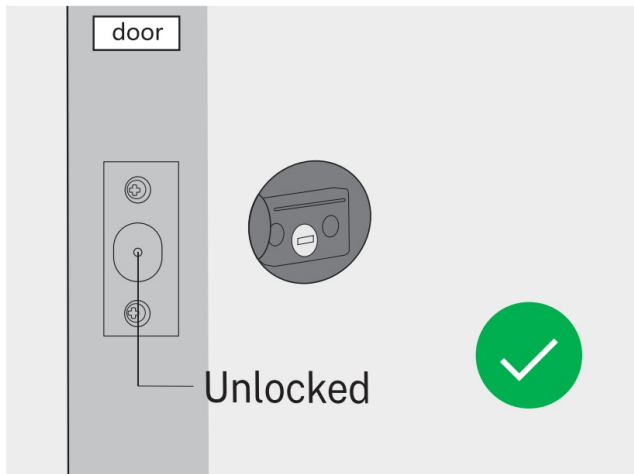


B : Insert latch into hole in side of door with the word "UP" up, and screw latch into door with two screws (D) provided.



IMPORTANT: Please make sure the latch bolt is fully retracted (in the unlocked position) before

installation.

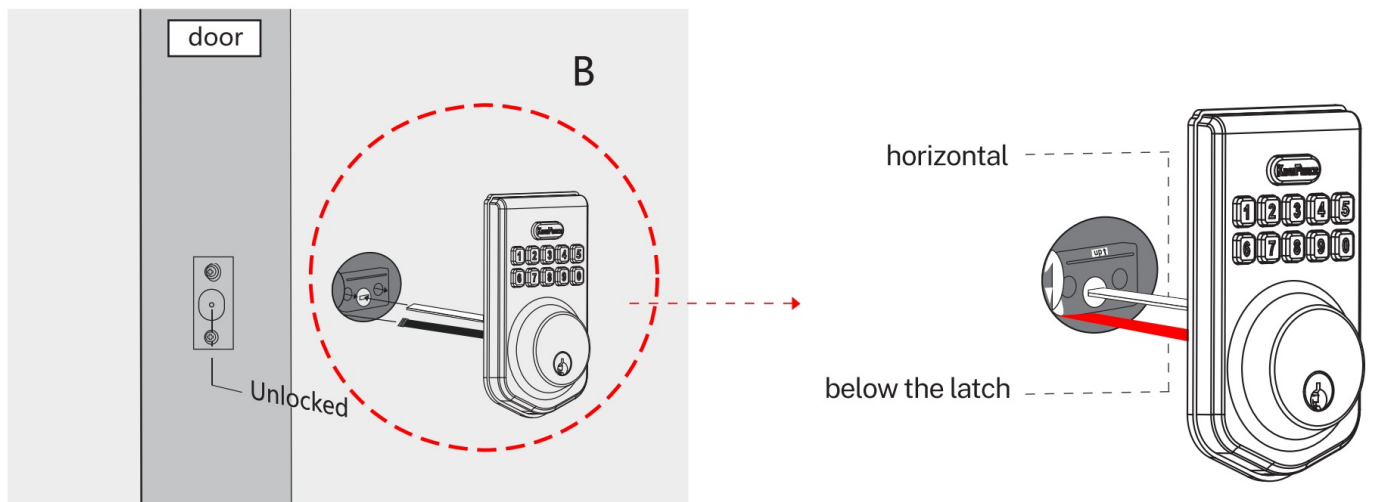


INSTALL THE EXTERIOR ASSEMBLY AND MOUNTING PLATE

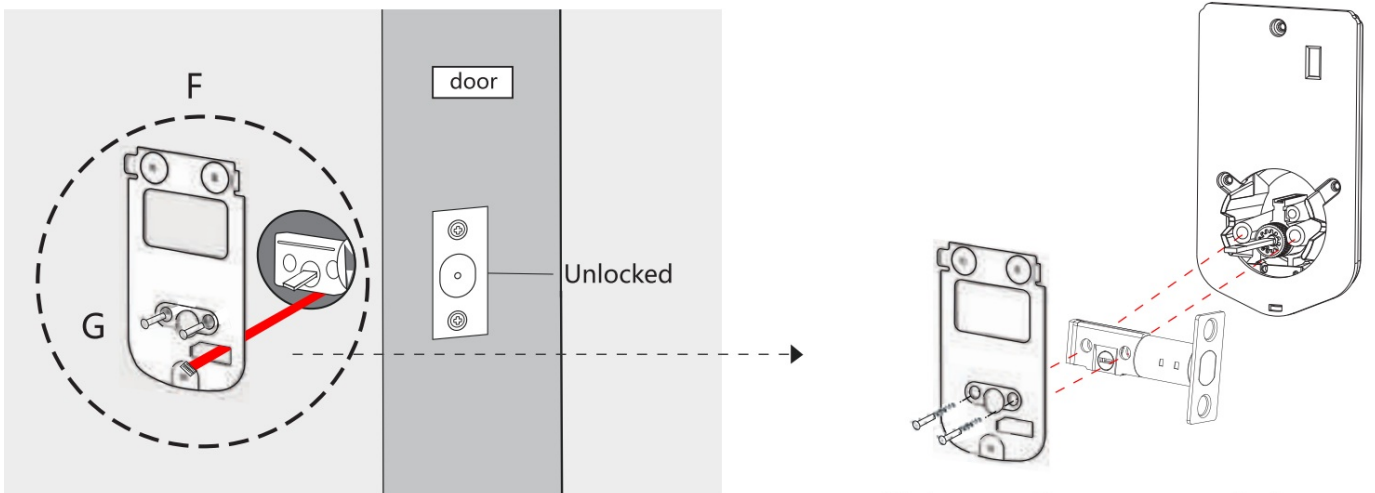


IMPORTANT: Please make sure the latch bolt is fully retracted (in the unlocked position) before installation.

A : Insert torque blade horizontally through slot in the latch, and route the cable below the latch.



B : Install mounting plate with two screws (G) provided.



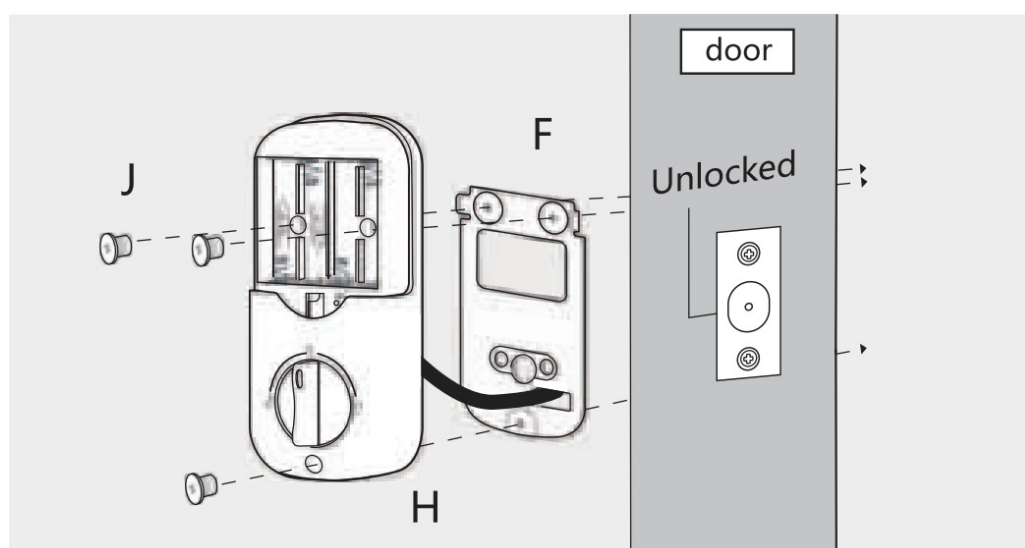
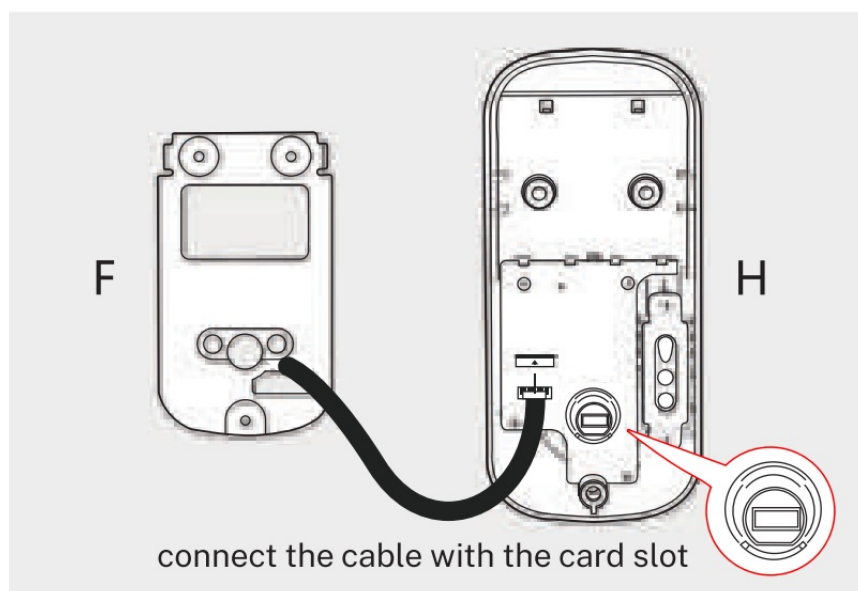
Make sure the screws are in the correct position.

INSTALL THE INTERIOR ASSEMBLY AND BATTERY COVER

A : Connect the cable and ensure connection is tight. Then install interior assembly with three screws (J) provided.

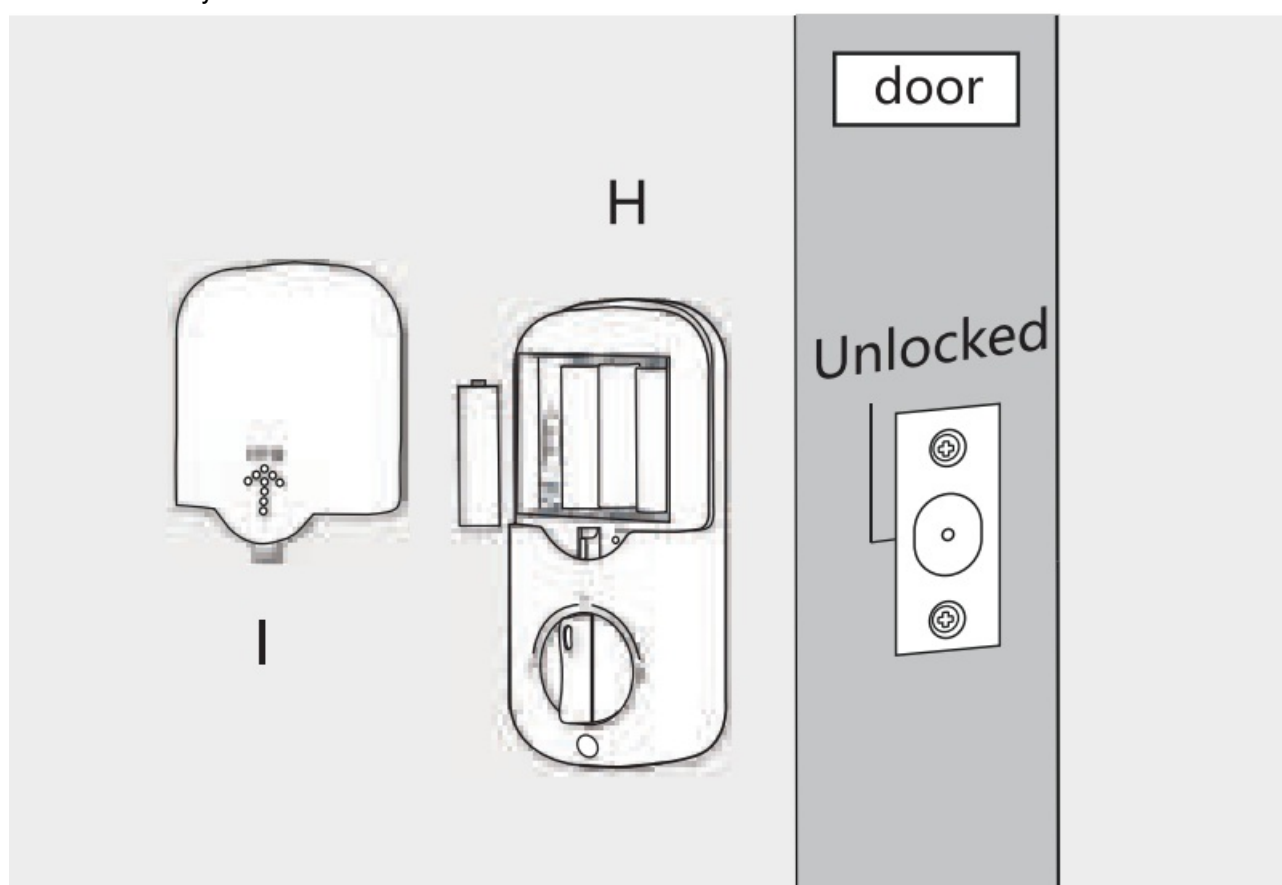


IMPORTANT: Please make sure the knob is in vertical position, and the latch bolt is fully retracted (in the unlocked position) before installation.

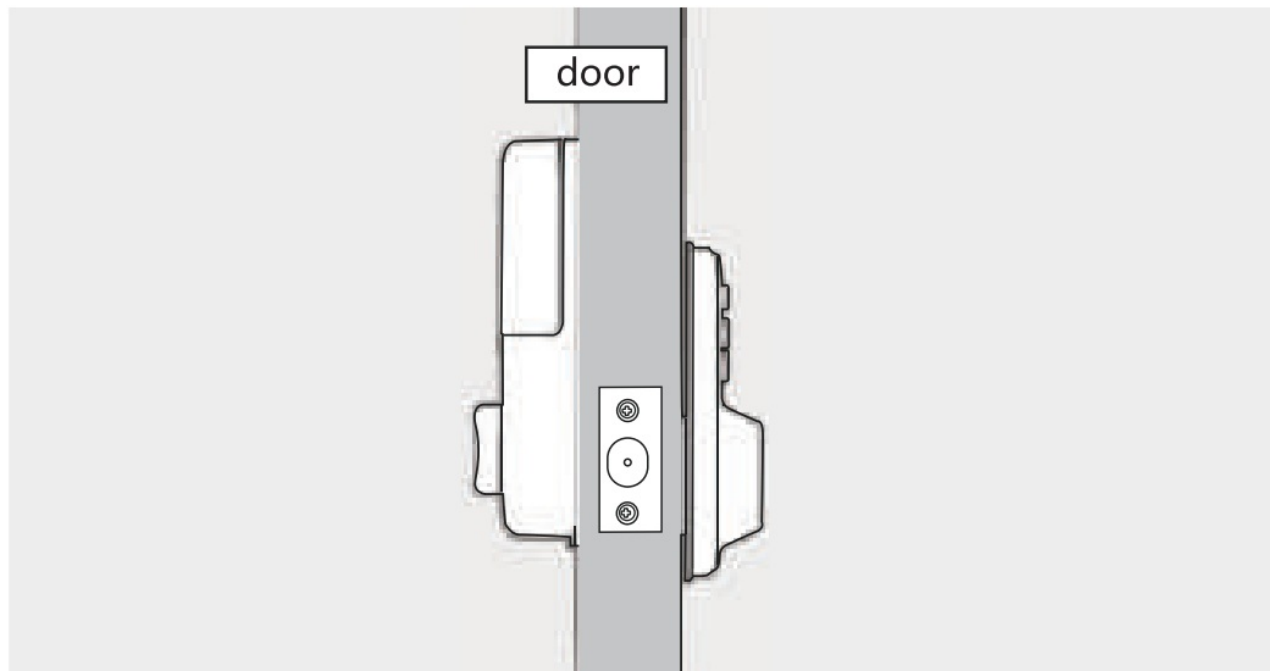


install the battery cover.

B : Load 4 batteries and

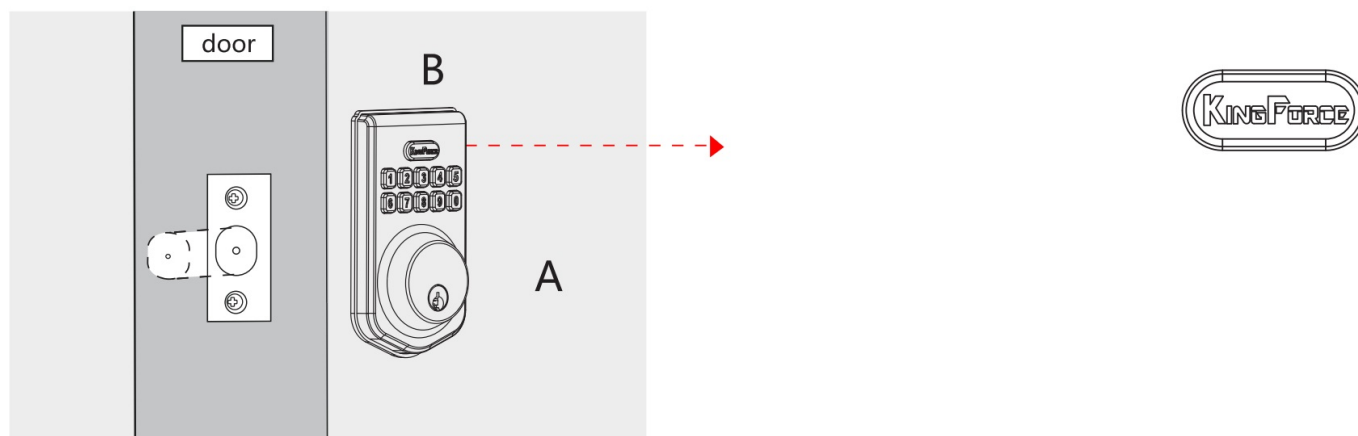


C : Finish Installation.



DETECT LEFT/RIGHT HAND DOOR INSTALLATION

Click the keypad King Force, the lock will go into locking position automatically. This is for the smart lock to memorize the orientation of the door.



Click the keypad King Force, the lock will go into locking position automatically. This is for the smart lock to memorize the orientation of the door.



Note: The default setting for auto lock is disabled. If you want to enable it, please refer to Quick Set Up 4: Set Auto Lock Time Delay.

Factory Default Settings

Settings	Factory Default
Master Code	123456
Auto Lock	Disabled
Silent Mode	Disabled
Wrong Code Entry Limit	10 times
Shutdown Time	30 seconds
Vacation Mode	Disabled

Definitions

1. MASTER CODE

Required for programming and feature settings. Master code. can be used to unlock the door under vacation mode.



Property owner/manager should keep this information confidential.

2. AUTO LOCK 'The lock will be If magically locked in setting seconds aft unlocking if @ Clock enabled

3. WRONG ENTRY LIMIT

After 10 unsuccessful attempts at entering a valid pin code, the. unit will shut down for 30 seconds.

4. SILENT MODE

The beep sounds can be muted when pressing keypad. But you will il hear key prompts such as alerts.

5. VACATION MODE

This is a security feature for you when you are leaving your home for vacation or long trip. Enabling vacation mode will restrict all user codes until master code is entered on keypad. Inputting any User Code causes 2 short beeps. Inputting wrong Master Code causes 3 short beeps.

6. UNLOCK DIRECTION

The machine has function of automatically judging unlocking direction When not in use or reset, unlocking direction is not determined. When pressing key to unlock flock firth time, it will automatically find unlock flock direction. It will records if successful, then it will be: executed based on record. There will be 3 short sound prompts f failed, it will continue to look for unlocking direction next time. Manually turning knob to unlock lock walnut record unlocking direction. f need 1o change unlocking direction after recorded, disconnect the. power and reconnect i, then successfully unlock flock one time.

7. UNLOCK METHOD

Enter the password and press the keypad King Forces 10 unlock. Manually turf the knob to unlock.

8. LOCKING METHOD

Click keypad King Force to lock. Manually term the knob to lock. 1fthe auto lock is enabled, the lock will be automatically locked after the Set time is over.

9. LOW BATTERY ALARM

When the correct unlock password is entered, the battery power will be 'automatically detected, i the voltage under below 4 8V(+ 0.1), five short beeps will be prompted.

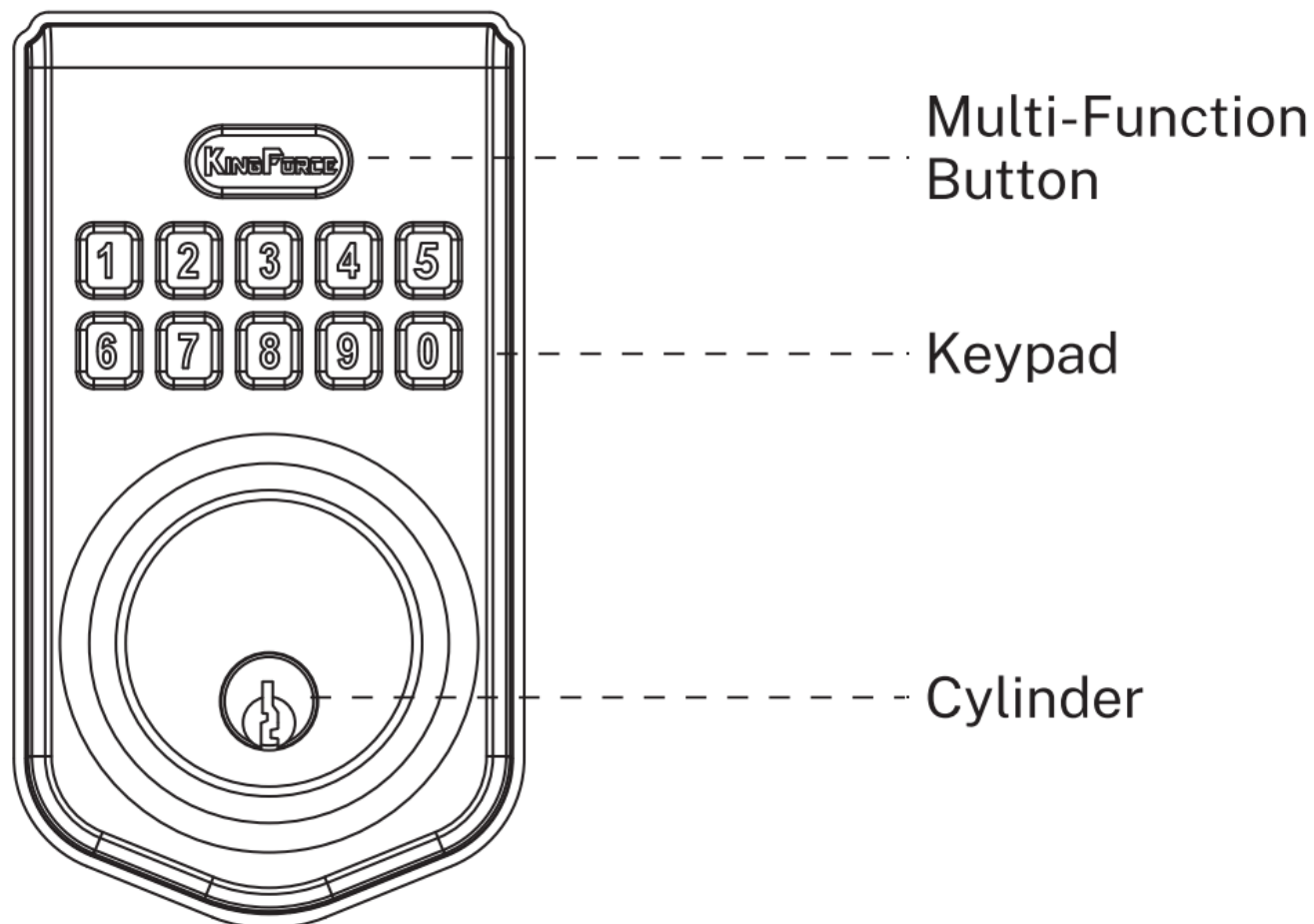
10. Emergency power supply

The USB Type C interface below the front panel can be connected to mobile power supply for emergency

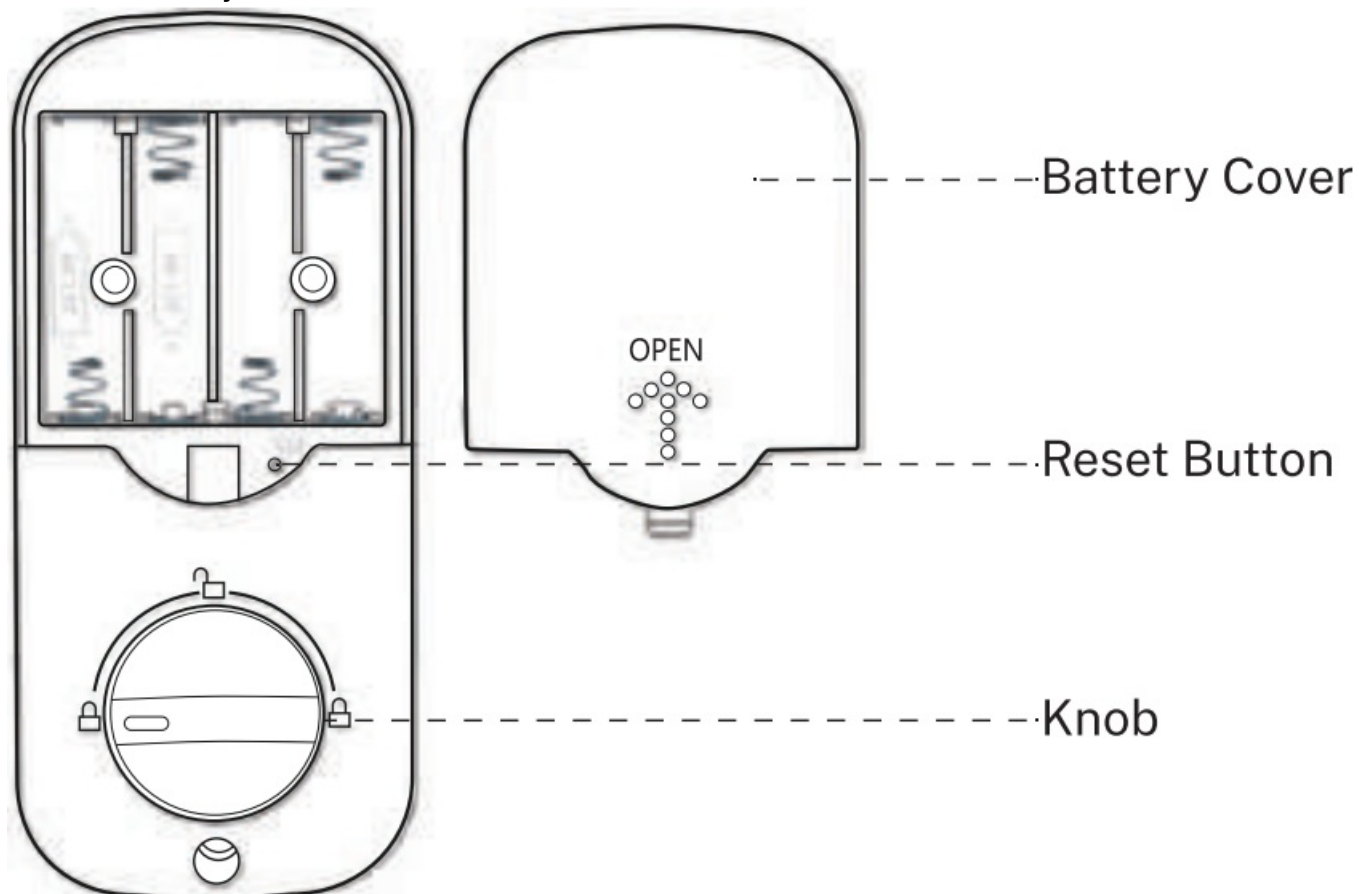
unlocking.

Parts illustrations

Exterior Assembly



Interior Assembly





The default Master Code is 123456.

Programming Instructions

1. MASTER CODE (4 to 10 digits)

The default Master Code is 123456.

2. USER CODE (4 to 10 digits)

A total of 20 User Codes and one temporary one-time User Code may be programmed. If the password is unlocked unsuccessfully, please reset the password according to [Quick Set Up-3.Add User Code] carefully.

FCC Statement

1. This device complies with Part 15 of the FCC Rules. Operation is subject to the following two conditions:
 1. This device may not cause harmful interference.
 2. This device must accept any interference received, including interference that may cause undesired operation.
2. Changes or modifications not expressly approved by the party responsible for compliance could void the user's authority to operate the equipment.

Note: This equipment has been tested and found to comply with the limits for a class B digital device, pursuant to Part 15 of the FCC Rules. These limits are designed to provide reasonable protection against harmful interference in a residential installation.

This equipment generates uses and can radiate radio frequency energy and, if not installed and used in accordance with the instructions, may cause harmful interference to radio communications. However, there is no guarantee that interference will not occur in a particular installation. If this equipment does cause harmful interference to radio or television reception, which can be determined by turning the equipment off and on, the user is encouraged to try to correct the interference by one or more of the following measures:

- Reorient or relocate the receiving antenna.
- Increase the separation between the equipment and receiver.
- Connect the equipment into an outlet on a circuit different from that to which the receiver is connected.
- Consult the dealer or an experienced radio/TV technician for help.

The device has been evaluated to meet general RF exposure requirements. The device can be used in portable exposure conditions without restriction.

This equipment should be installed and operated with a minimum distance of 20 cm between the radiator and your body.

Quick Set Up

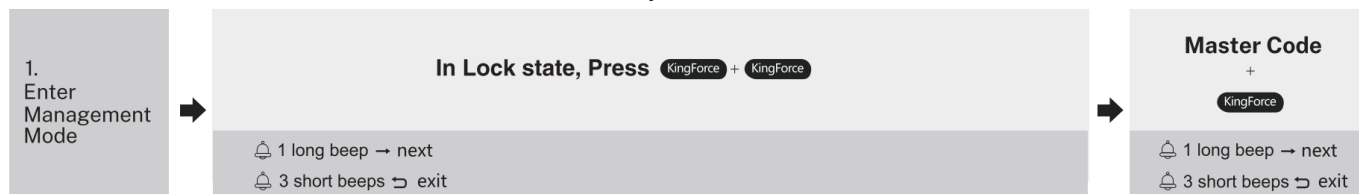


The default Master Code is 123456.

- 3 short beeps appear at every wrong and overtime step.

- 1 long beep means you can go on until succeed.
- While you enter Management mode, you will see all keypads light flash constantly.

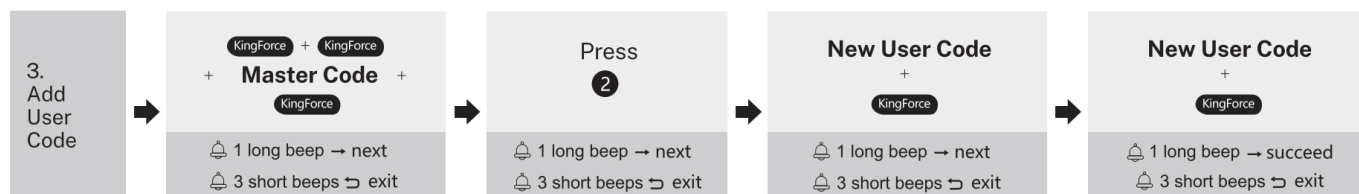
note: is the Multi-Function button in Exterior Assembly.



Note: You will enter Management Mode only in lock state.

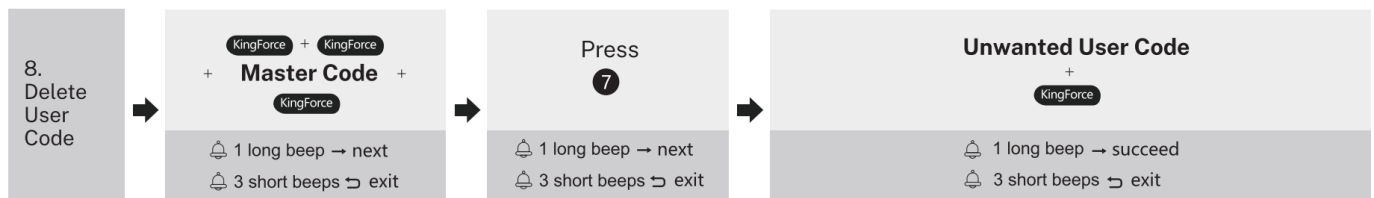


default master code:123456



Note: While Vacation mold enabled, if you use master code to unlock or enter management mode, then Vacation mode will be disabled.

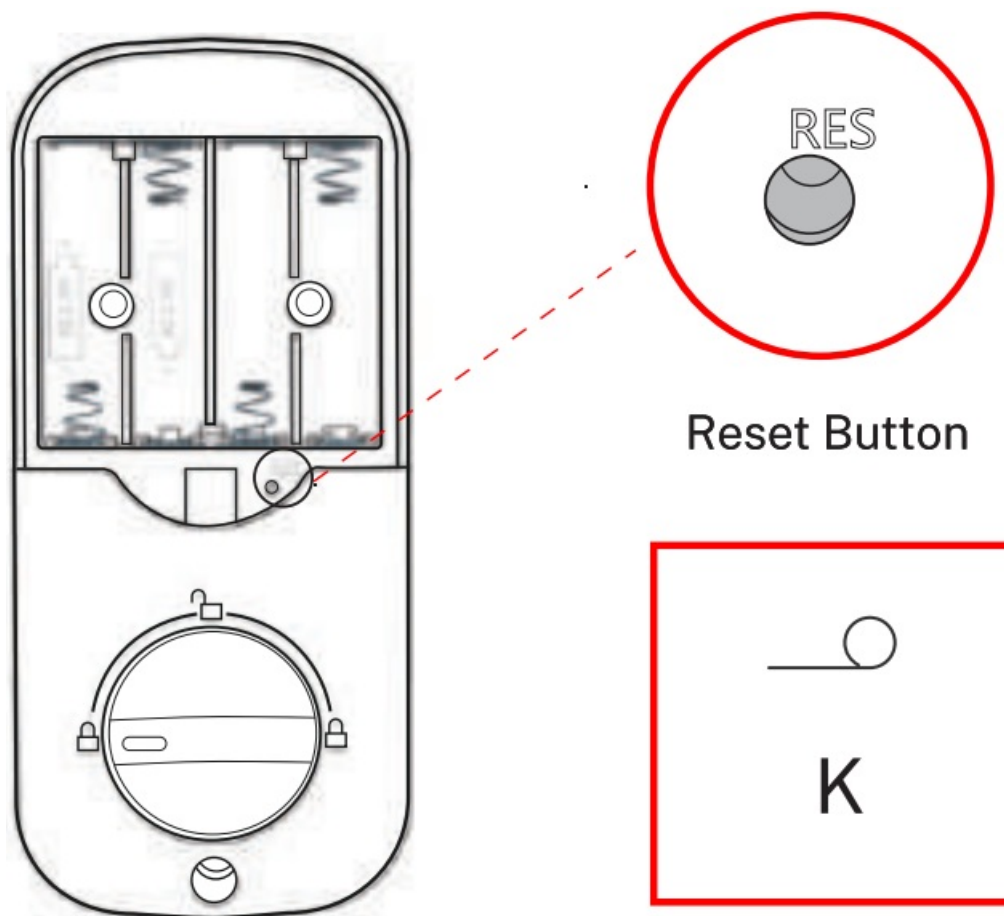




Restore To Factory Default Settings

The default Master Code is **123456**

1. Open and unlock the door.
2. Take out one battery, then press random keypad to consume the rest of power.
3. Press the Reset Button with the Reset tool (K), then keep pressing and place the battery back.
4. Keep holding the Reset Button until you hear 2 beeps. (fjust hear one beep, please do it again from step 1)



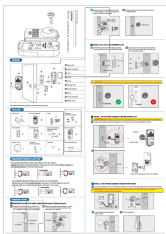
Reset Tool

Get 24/7 Assistance at



Use camera or QR scanner to scan
Visit: <https://kingforce afterservice.vip>
Email: kingforce@afterservice.vip
Call: +1 (888) 839 1709

Documents / Resources

	<p>KINGFORCE D1 Keyless Entry Door Lock with Handle [pdf] Installation Guide D1, D1 Keyless Entry Door Lock with Handle, Keyless Entry Door Lock with Handle, Entry Door Lock with Handle, Door Lock with Handle, Lock with Handle, Handle</p>
---	--

References

- [User Manual](#)