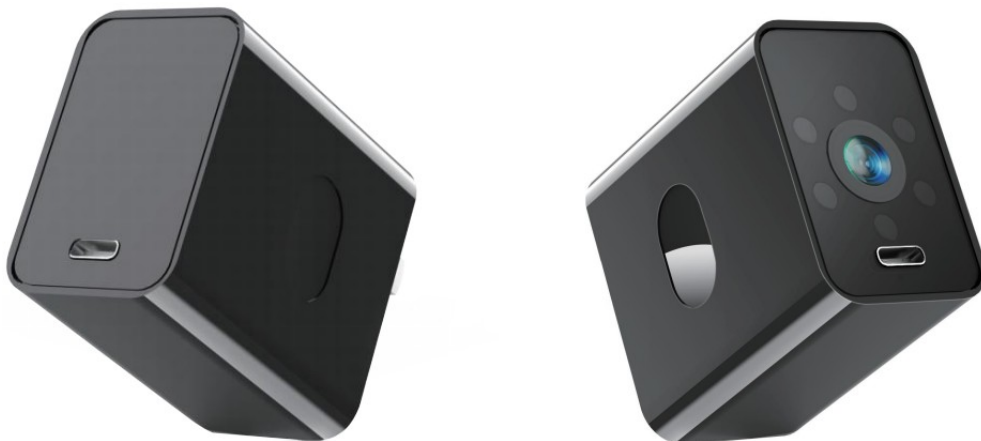


KINGDANS HC02NEW 4K Spy Hidden Camera User Manual

[Home](#) » [KINGDANS](#) » KINGDANS HC02NEW 4K Spy Hidden Camera User Manual 

KINGDANS

HC02NEW 4K Spy Hidden Camera
User Manual



Contents

- [1 HC02NEW 4K Spy Hidden Camera](#)
- [2 Product Details](#)
- [3 Warranty & Service](#)
- [4 WiFi Connection](#)
- [5 To Business Customers](#)
- [6 RESET & QA](#)
- [7 Format MicroSD Card & Other Functions](#)
- [8 Documents / Resources](#)
- [9 Related Posts](#)

HC02NEW 4K Spy Hidden Camera

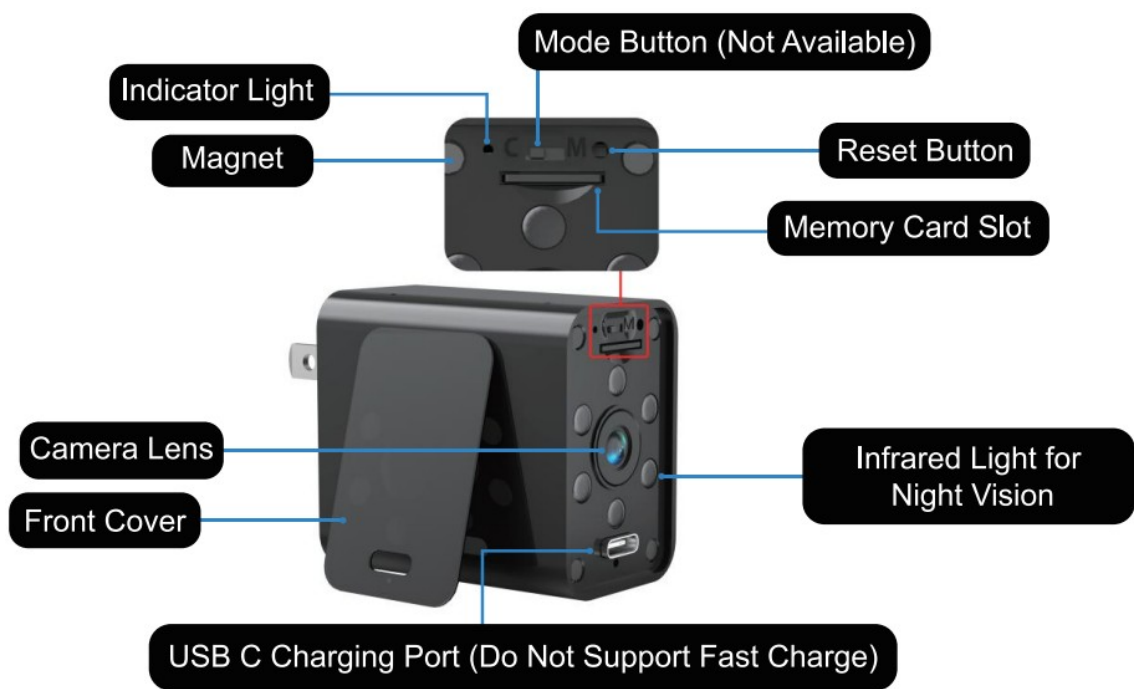
WiFi Camera Charger

*** Plug-in & Enjoy Live Online ***
* Before using this product, please read this manual carefully.
* Declare: Please strictly abide by the relevant laws and regulations, do not use it for any illegal purpose!

Product Details

Package List:

- Hidden Camera *1
- 3-in-1 USB C Cable *1
- Reset Pin *1
- Cleaning Cloth *1
- User Manual *1
- Hollow-out Cover *1



Use which front cover?	Black cover (Original)	Hollow-out Cover
Daytime Clarity	★★★★★ 4-star	★★★★★ 5-star
Night Vision Clarity	★★★ 3-star	★★★★★ 5-star
Hidden Performance	★★★★★ 5-star	★★★ 3-star

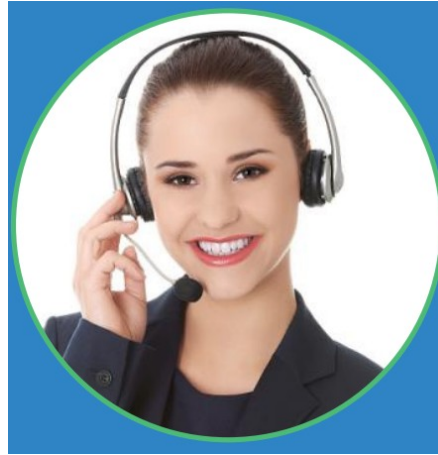
Warranty & Service

We are very grateful for your support of KINGDANS. We guarantee that anyone who buys from KINGDANS can get a 1-Year warranty and professional lifetime after-sales service.
Any problems, please contact us **FIRST!!!**
Our professional customer service team will reply to you within 12 hours of working hours.
*** Use Environment:**

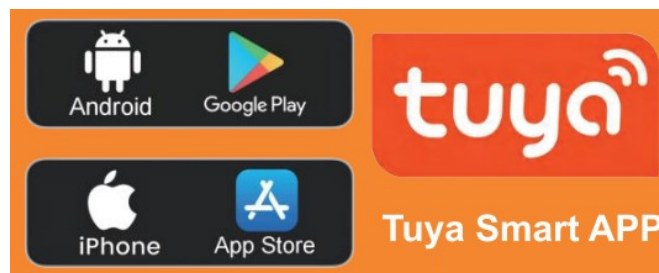
1. This product is not waterproof, only for indoor use;
2. Please use it away from humid and high-temperature environments;
3. It is normal to heat up slightly while using. With built-in overheating protection, it will auto power off over a certain temperature.

Need support?

Contact our lovely Cathie through Amazon Messages!!!



WiFi Connection



Red Light ON → Camera Start Up / Restart

Blue Light Flashing Slowly → Waiting for Connection

Blue Light Flashing Quickly → Connecting to WiFi

Red/Blue Light ON → Successfully Connected
* The indicator will auto turns off after 30s.



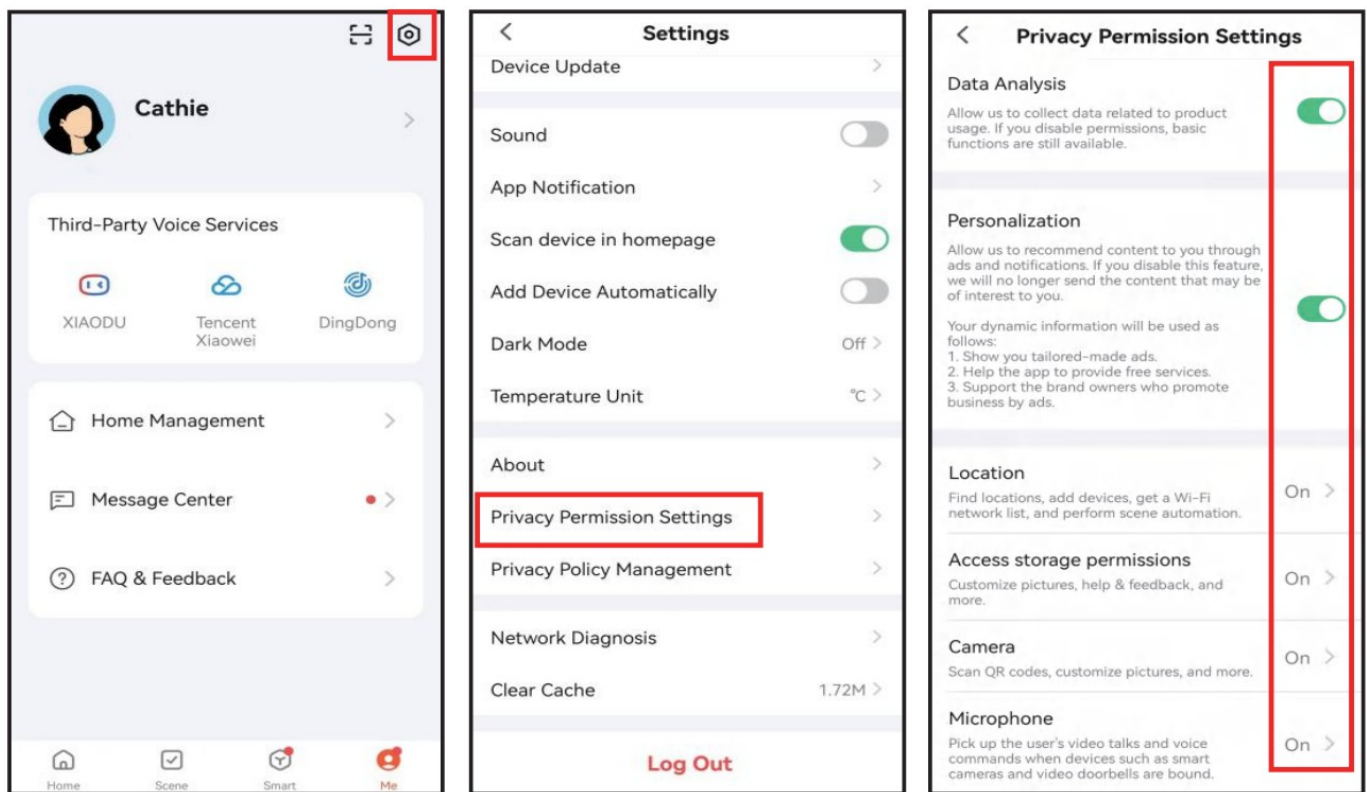
Insert a MicroSD card:

1. Max 128GB.
2. Class10 or above.
3. Genuine MicroSD card (Or it might not work).

* You can skip this step if you don't have a meet-standard MicroSD card.



- Plug-in the camera
- Keep it clean.



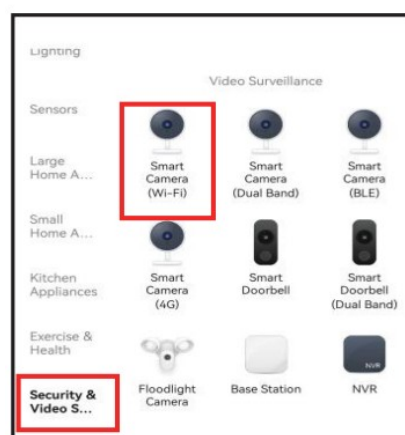
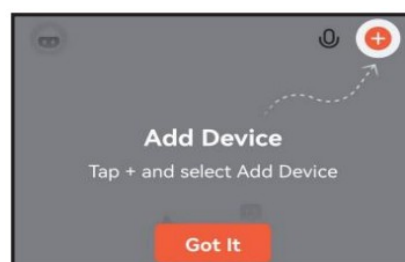
* You should allow all app notification permissions on your phone like above. Or you may not receive any alerts and can not connected to WiFi successfully.

- Red indicator light changes like this:
- Blue indicator light changes like this:



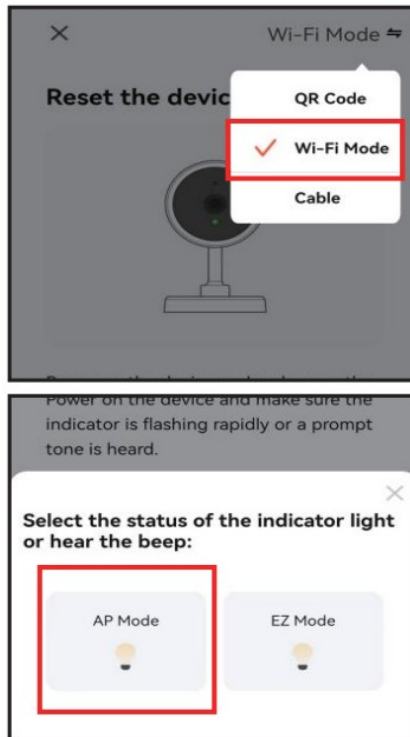
1. Add Device →

'Smart Camera(Wi-Fi)'

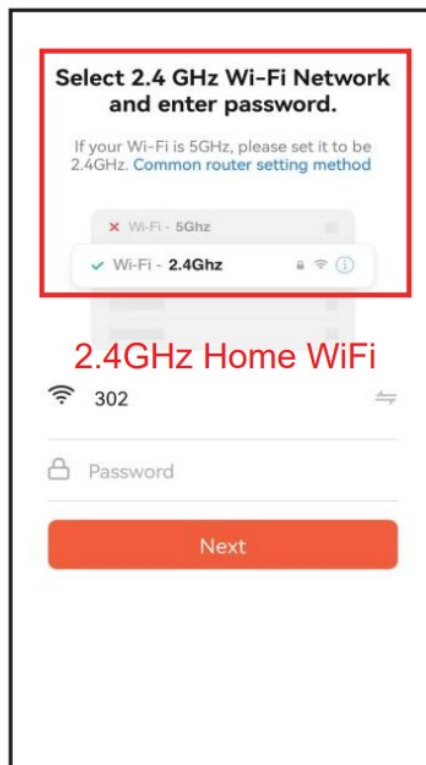


2. Choose 'Wi-Fi Mode'

Then 'AP Mode'



3. Input Home WiFi Password
* 2.4GHz WiFi Only! No 5GHz!



4. Go to Wlan List
Find Camera Hotspot



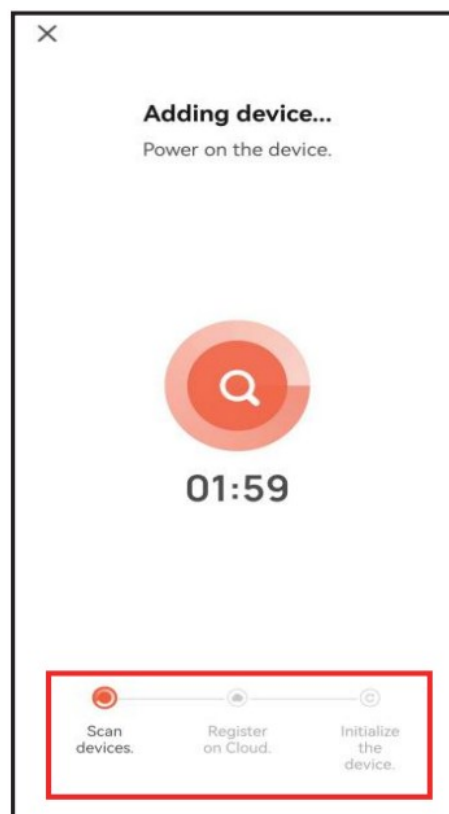
5. Camera Hotspots Starts with 'SmartLife-xxxx'



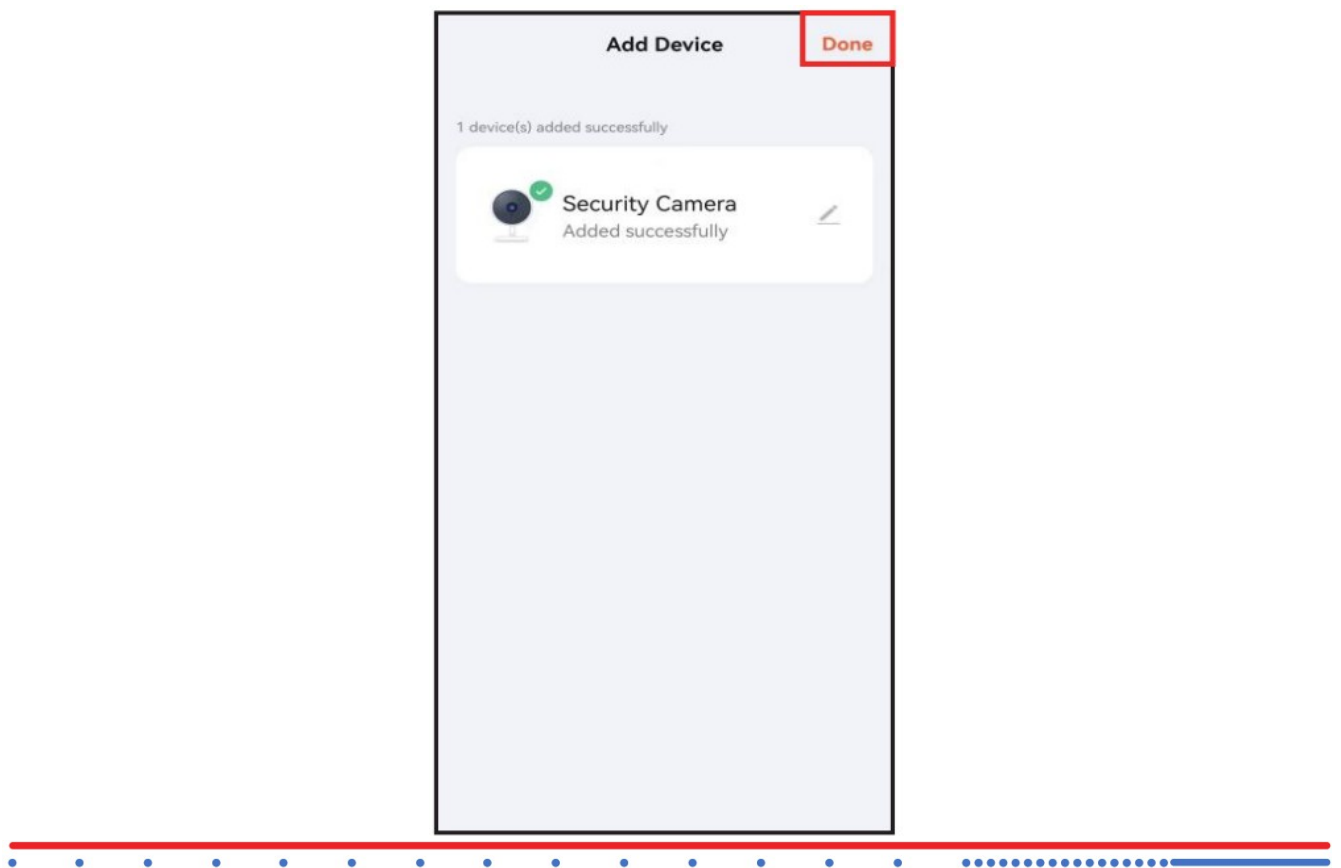
6. Keep Connected.
IMPORTANT!!!



7. Back to APP & Wait.
Blue Light Flash Fast



8. WiFi Connected!!!



To Business Customers

1. When did we start?

- KINGDANS, founded in 2018, is a professional manufacturer of home security products, focusing on developing and producing hidden and low-power consumption mini cameras.

2. What makes our products UNIQUE?

- Unlike other retail sellers, we are a manufacturer with professional R&D team and production facilities, skilled workers, and reliable partners such as Tuya, Hikvision, etc.
- At present, we have solved most of the existing problems of hidden cameras, such as low definition, poor night vision, exposed lens, and complicated connection. At the same time, we continue to innovate to achieve 4K clarity and a more stable 5GHz WiFi signal (WiFi 6) to bring a better user experience for our customers.

We also support customized product appearances, functions, brands, and application scenarios with good quality and low cost. Welcome to contact us!

We will get back to you within 12 hours during working hours (within 24 hours of other times.)

RESET & QA

1. Cannot connect to WiFi?
2. Camera doesn't work?

Any problems?

TRY RESET!

After the device starts, using the reset pin provided, press and hold the reset button for 5-8s.

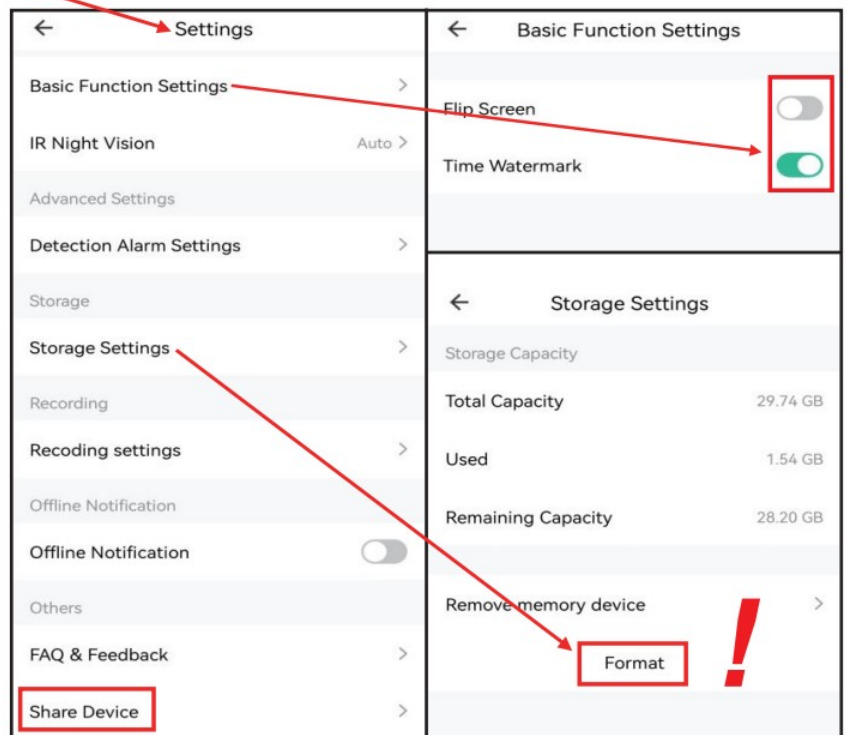
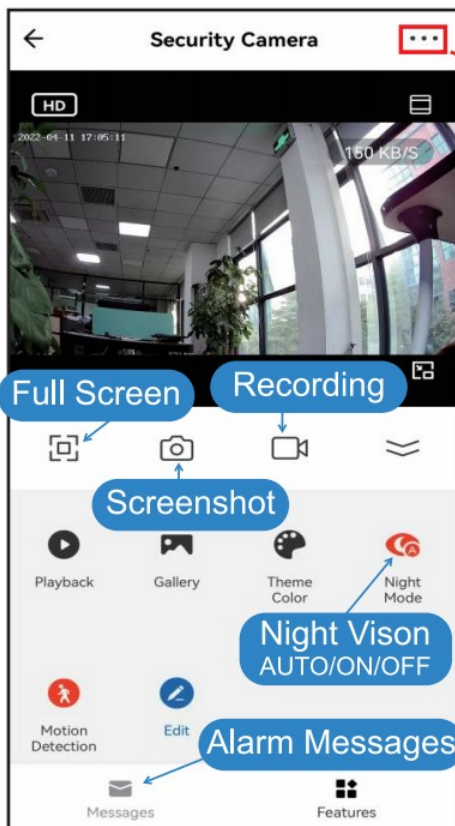


Why can't I connect to WiFi while the countdown is over?

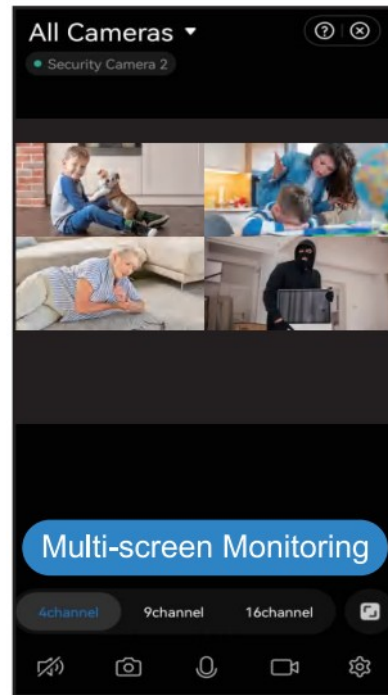
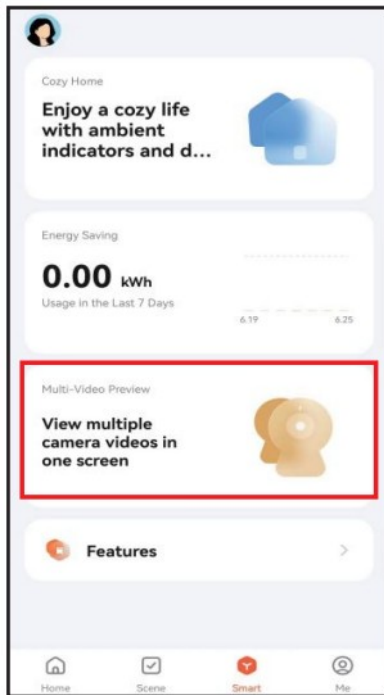


- * 1. Make sure your phone is above Android 5.0, iPhone is above iOS 11.
- * 2. WiFi is fast and stable. (* Do not support 5GHz.)
- * 3. Your phone should keep connected to the "Smartlife-xxxx" hotspot during the countdown until the connection is successful.
- * 4. iPhone must turn on APP privacy permissions.

Format MicroSD Card & Other Functions




* If you inserted a MicroSD card, you should format it before use. If you don't insert a MicroSD card, you cannot automatically save video files but only view online.



This APP supports 4-9-16 channels cameras viewing at the same time!!!

KINGDANS

Documents / Resources

	<p>KINGDANS HC02NEW 4K Spy Hidden Camera [pdf] User Manual HC02NEW, 4K Spy Hidden Camera, Hidden Camera, 4K Spy Camera, Camera</p>
---	---