



# King One Products RC-7 DC Ceiling Fan with RF Remote Control Instruction Manual

[Home](#) » [King One Products](#) » King One Products RC-7 DC Ceiling Fan with RF Remote Control Instruction Manual 



## Contents

- [1 RC-7,RC-9 DC CEILING FAN RF REMOTE CONTROL INSTALLATION AND OPERATION INSTRUCTIONS](#)
- [2 READ AND SAVE THESE INSTRUCTIONS](#)
- [3 MAKING WIRE CONNECTIONS](#)
- [4 CEILING](#)
- [5 Learning Process](#)
- [6 Remote Control Operation](#)
- [7 Documents / Resources](#)
  - [7.1 References](#)
- [8 Related Posts](#)

**RC-7,RC-9  
DC CEILING FAN RF REMOTE CONTROL  
INSTALLATION AND OPERATION INSTRUCTIONS**

**FOR FAN MODELS: 1070,1080**

---

## READ AND SAVE THESE INSTRUCTIONS

Please read and understand this entire manual before attempting to install or operate the product.

Make sure that all electrical connections comply with local codes, ordinances and the National Electrical Code.

If you are unfamiliar with proper electrical wiring connections, obtain the services of a qualified electrician.

**WARNING:** To avoid the risk of electrical shock, turn the power off at the main fuse box or circuit breaker before wiring.

**NOTE:** Fan installation must be complete including assembly of fan blades before testing remote control.

Refer to your Ceiling fan instruction manual for safety and installation instructions.  
The remote controller is to be used for control of DC ceiling fan and fan light only.

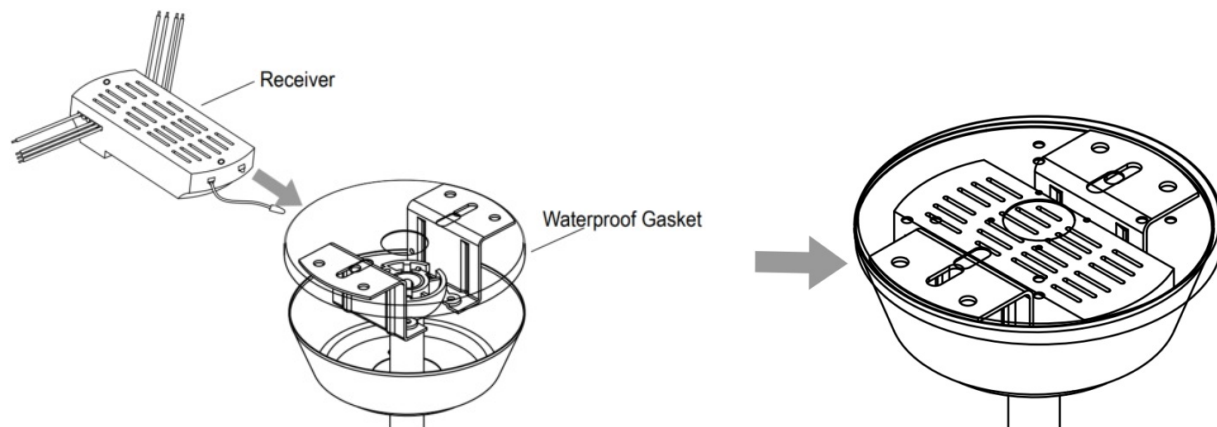
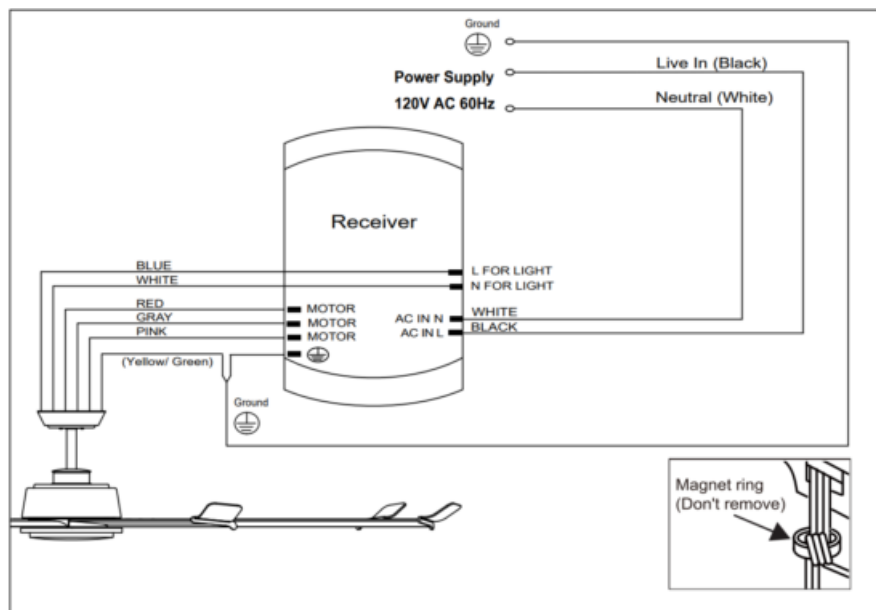
**WARNING:** Do not exceed MAX rating power 50W for fan and 100W for ceiling fan light.

**WARNING:** To reduce the risk of fire or injury, do not use this product in conjunction with any variable (Rheostat) wall control.

## MAKING WIRE CONNECTIONS

**IMPORTANT:** Before installing the receiver, make sure the power on your fan is OFF.

- Connect wires by using wire connectors supplied.
- Connect the Black wire (marked AC IN L) from receiver to the Live (Black wire) from house.
- Connect the White wire (marked AC IN N) from receiver to the Neutral (White white) from house.
- Connect yellow/green grounded wire to grounded wire from outlet box.
- Connect the motor wire (Red, Gray, Pink wire) from the fan to the receiver (Red, Gray, Pink wire) .
- Connect the Light wire L (Blue wire) from fan to light Live (Blue wire) from receiver.
- Connect the Light wire N (White wire) from fan to Light Neutral (White wire) from receiver.

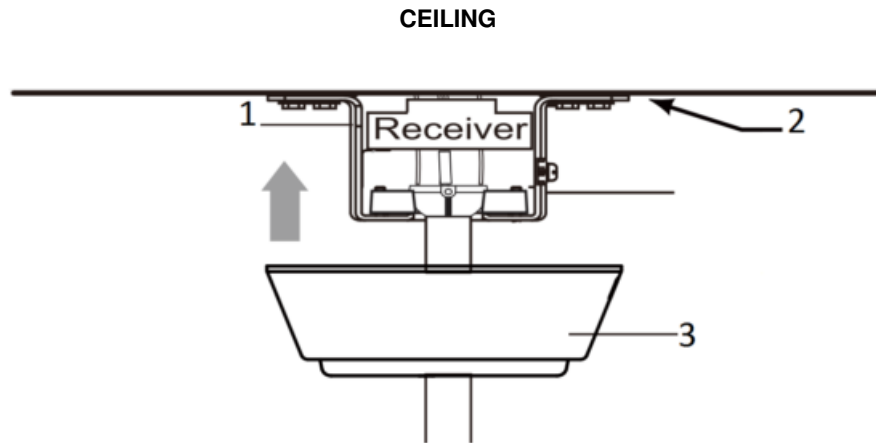


## **WARNING**

To avoid the risk of fire or shock, make sure the electrical wires are completely tuck inside of the outlet box and not pinched between the ceiling and canopy.

## **WARNING**

Check to see that all connections are tight, including ground, and that no bare wire is visible at the wire connectors, except for the ground wire. Do not operate fan unless blades are completely installed in place.



1. Mounting Bracket
2. Waterproof Gasket placed between Mounting Bracket and Ceiling
3. Canopy

Insert the receiver into the mounting bracket and store all wires neatly. Install the canopy to the mounting bracket using screws provided.

### **Learning Process**

Step 1: Install two(2) AAA Alkaline (1.5A) batteries(NOT INCLUDED).

Step 2: Turn on the power on the fan, within 30 seconds turn the transmitter toward the receiver, press “**FAN OFF**” button and hold for 3-4 seconds, once the receiver has detected the frequency, the receiver will make “Beep sound”, the digital paring is done and you can;

- a. Control the fan with this transmitter.
- b. Re-match two ceiling fans with one transmitter with the same process.

If the fan is not responding to the transmitter, turn the power off to fan and turn it back on again and within 30 seconds repeat Step-2.

**NOTE:** When controlling two fans simultaneously, the installation distance between two fans must not exceed 49 ft.

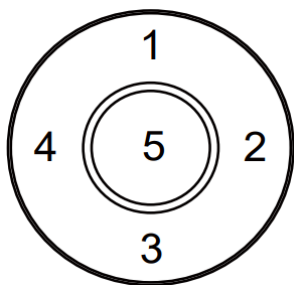
**NOTE:** After the AC power is on, do not press any other button on the transmitter before doing a digital paring. The digital paring will not function 30 seconds after the receiver is powered on.

**NOTE:** Remove batteries if not used for a long period of time to prevent damage to the transmitter.

### **Remote Control Operation**



Press and release this button to turn off fan.



Operation buttons on the panel of the transmitter.

1 = Highest Speed    4 = Low Speed  
 2 = High Speed    5 = Lowest Speed  
 3 = Medium Speed



Press this button to set fan wind direction up or down

**Summer Mode(Forward)-** Fan runs counterclockwise.

Airflow provides a downward cooling breeze.

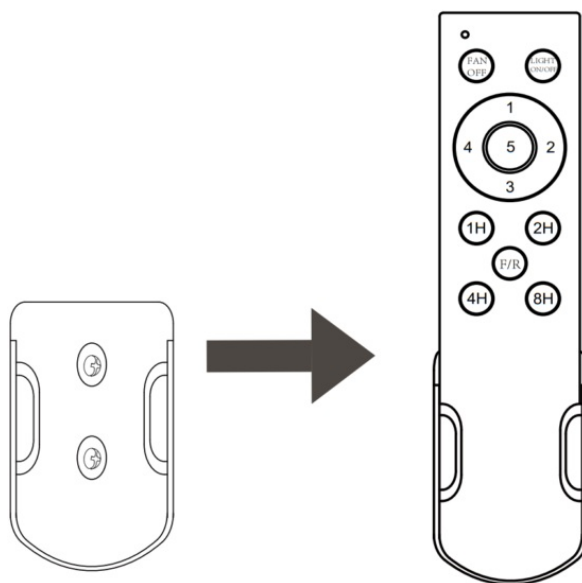
**Winter Mode(Reverse)** – Fan runs clockwise.

Airflow will force warm air downward without a noticeable breeze.

**NOTE:** It will take a few seconds for fan to slow down and change rotation direction.



Turn light ON/OFF.



Mount the transmitter holder onto the wall using screws provided.

Place the transmitter into the holder.

Timer Function: Setting up when the fan turn on.



The fan will turn off after 1 hour.



The fan will turn off after 4 hours.



The fan will turn off after 2 hours.



The fan will turn off after 8 hours.

### § 15.19 Labelling requirements.

This device complies with part 15 of the FCC Rules. Operation is subject to the following two conditions: (1) This device may not cause harmful interference, and (2) this device must accept any interference received, including interference that may cause undesired operation.

### § 15.21 Information to user.

Any Changes or modifications not expressly approved by the party responsible for compliance could void the user's authority to operate the equipment.

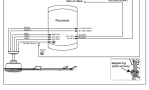
### § 15.105 Information to the user.

**Note:** This equipment has been tested and found to comply with the limits for a Class B digital device, pursuant to part 15 of the FCC Rules. These limits are designed to provide reasonable protection against harmful interference in a residential installation. This equipment generates uses and can radiate radio frequency energy and, if not installed and used in accordance with the instructions, may cause harmful interference to radio communications. However, there is no guarantee that interference will not occur in a particular installation. If this equipment does cause harmful interference to radio or television reception, which can be determined by turning the equipment off and on, the user is encouraged to try to correct the interference by one or more of the following measures:

- Reorient or relocate the receiving antenna.
- Increase the separation between the equipment and receiver.
- Connect the equipment into an outlet on a circuit different from that to which the receiver is connected.
- Consult the dealer or an experienced radio/TV technician for help.

The device has been evaluated to meet general RF exposure requirement. The device can be used in portable exposure condition without restriction.

## Documents / Resources

	<p><a href="#">King One Products RC-7 DC Ceiling Fan with RF Remote Control</a> [pdf] Instruction Manual RC-7REMOTE, RC7REMOTE, 2A6LT-RC-7REMOTE, 2A6LTRC7REMOTE, 1070, 1080, RC-7, RC-9, RC-7 DC Ceiling Fan with RF Remote Control, DC Ceiling Fan with RF Remote Control</p>
---	---

## References

-  [RP Lighting+Fans - Supplier for electrical distributors & lighting showrooms](#)