

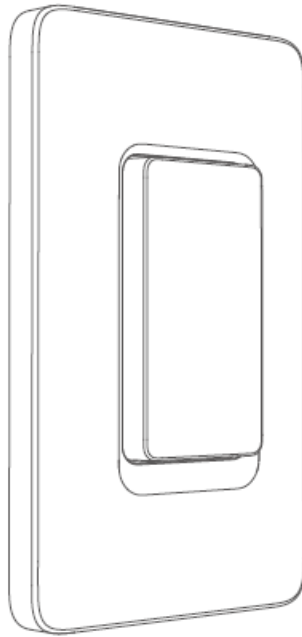
Kinetic 20 US KWS CON Wireless Switch Controller User Manual

[Home](#) » [Kinetic](#) » Kinetic 20 US KWS CON Wireless Switch Controller User Manual 

Contents

- [1 Kinetic 20 US KWS CON Wireless Switch Controller](#)
- [2 Product Introduction](#)
- [3 Installation Instruction](#)
 - [3.1 Option 1:](#)
 - [3.2 Option 2:](#)
- [4 Product Parameter](#)
- [5 FCC Warning](#)
- [6 Documents / Resources](#)
 - [6.1 References](#)

Kinetic 20 US KWS CON Wireless Switch Controller



USER MANUAL

Kinetic Wireless Switch Controller

Please read this user manual carefully before using the product and keep it properly.

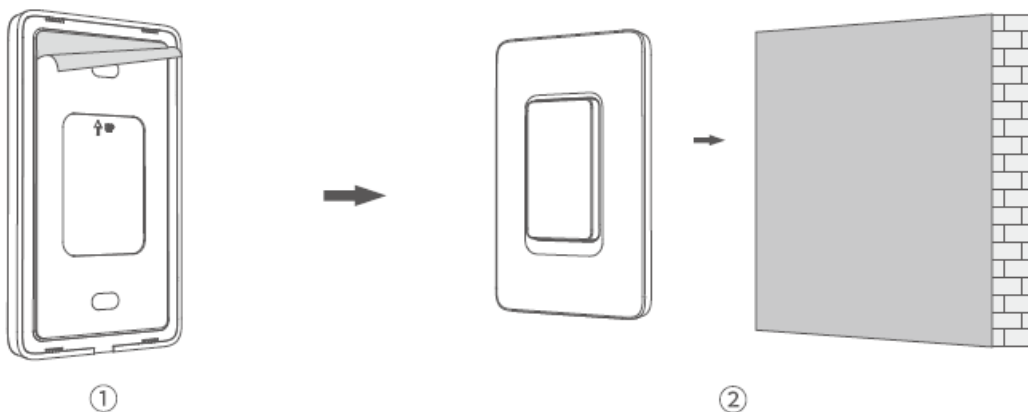
Product Introduction

The Kinetic Wireless Switch Controller is used innovative self-powered technology to collect the energy at the moment of switch action for sending wireless signals without batteries, eliminating the trouble of battery replacement and protecting the environment.

Installation Instruction

Option 1:

Tear off the double-sided tape and stick it on the wall if the wall is clean.

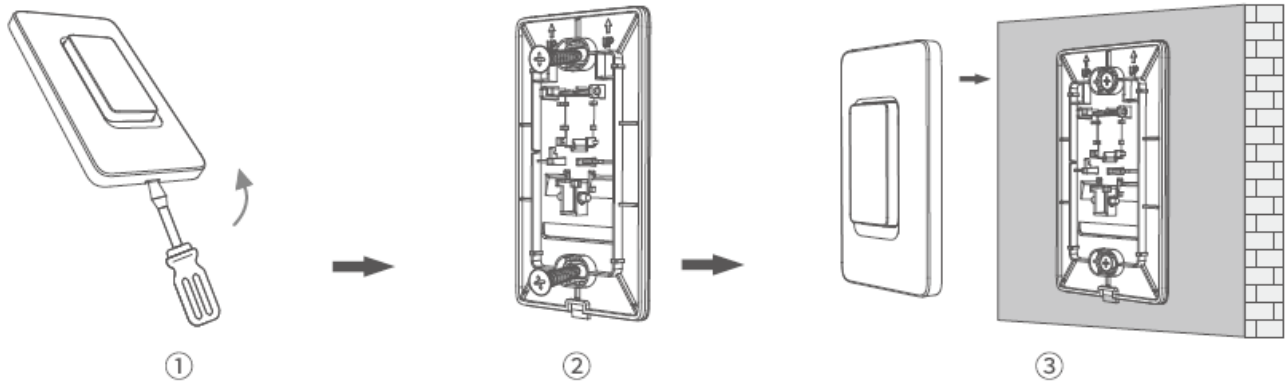


1. Tear off one side of the double-sided tape and stick it onto the back of the switch, and then remove the protective film of the double side dtape.

2. Stick the switch onto the wall and press firmly. double- sided tape.

Option 2:

Install the switch in the position of the original switch by using screws.



1. Use a screwdriver to pry where the arrow points.

2. Install the back cover onto the switch case with screws.

3. Push the the switch onto the back cover.

Product Parameter

- Model: 20-US-KWS-CON
- Power Supply: Self-powered (without extra power supply)
- Wireless Range: About 50m
- Working Environment: Temperature: -10°C- 40°C

FCC Warning

This device complies with part 15 of the FCC Rules. Operation is subject to the following two conditions: (1) This device may not cause harmful interference, and (2) this device must accept any interference received, including interference that may cause undesired operation.

Note: This equipment has been tested and found to comply with the limits for a Class B digital device, pursuant to part 15 of the FCC Rules. These limits are designed to provide reasonable protection against harmful interference in a residential installation. This equipment generates, uses and can radiate radio frequency energy and, if not installed and used in accordance with the instructions, may cause harmful interference to radio communications. However, there is no guarantee that interference will not occur in a particular installation. If this equipment does cause harmful interference to radio or television reception, which can be determined by turning the equipment off and on, the user is encouraged to try to correct the interference by one or more of the following measures:

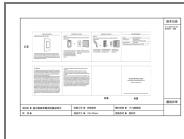
- Reorient or relocate the receiving antenna.

- Increase the separation between the equipment and receiver.
- Connect the equipment into an outlet on a circuit different from that to which the receiver is connected.
- Consult the dealer or an experienced radio/television technician for help.

Note: The Grantee is not responsible for any changes or modifications not expressly approved by the party responsible for compliance. Such modifications could void the user's authority to operate the equipment.

The device has been evaluated to meet general RF exposure requirement. To maintain compliance with FCC's RF exposure guidelines, the distance must be at least 20 cm between the radiator and your body, and fully supported by the operating and installation configurations of the transmitter and its antenna(s).

Documents / Resources



[Kinetic 20 US KWS CON Wireless Switch Controller](#) [pdf] User Manual
20 US KWS CON Wireless Switch Controller, 20 US KWS CON, Wireless Switch Controller, Switch Controller

References

- [User Manual](#)

[Manuals+](#), [Privacy Policy](#)

This website is an independent publication and is neither affiliated with nor endorsed by any of the trademark owners. The "Bluetooth®" word mark and logos are registered trademarks owned by Bluetooth SIG, Inc. The "Wi-Fi®" word mark and logos are registered trademarks owned by the Wi-Fi Alliance. Any use of these marks on this website does not imply any affiliation with or endorsement.