

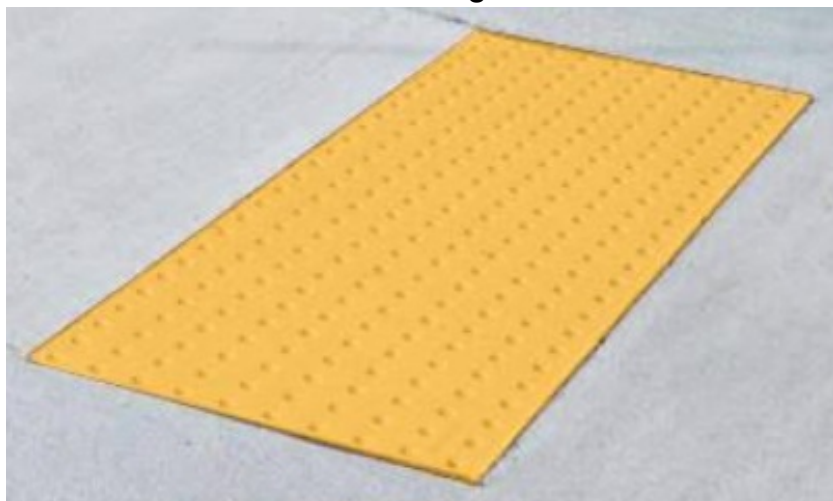
KINESIK RCIP Recessed Tactile Walking Surface Indicators Instructions

[Home](#) » [KINESIK](#) » KINESIK RCIP Recessed Tactile Walking Surface Indicators Instructions 

Contents

- [1 KINESIK RCIP Recessed Tactile Walking Surface Indicators Instructions](#)
- [2 Replaceable Cast in Place](#)
- [3 Recommended Tools and Materials:](#)
- [4 Installation Instructions:](#)
- [5 Replaceable Cast in Place](#)
- [6 Recommended Tools and Materials:](#)
- [7 Replacement Instructions](#)
- [8 Documents / Resources](#)
 - [8.1 References](#)

KINESIK RCIP Recessed Tactile Walking Surface Indicators Instructions



Replaceable Cast in Place

Tactile Walking Surface Indicators

Installation Instructions

he following instructions apply to Access® Tile's Replaceable Cast in Place tiles as well as the Radius Curve and Wayfinding version of these tiles.

NOTE: Tiles can be cut to custom sizes, or to make a radius, using a continuous rim diamond blade in a circular saw or mini-grinder. Use of a straightedge to guide the cut is advisable where appropriate.

Recommended Tools and Materials:

- White, or non-marking rubber mallet
- Sand bags
- 3/8" radius edging tool
- Steel trowel
- Sharp exacto knife
- Hard plastic bristle brush
- Continuous rim diamond blade in a circular saw or mini-grinder.

Installation Instructions:

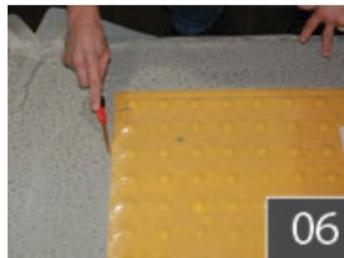
1. Maintaining a 4-7 slump range, pour and float the concrete.
2. Without removing any concrete, place the tile 6-8" from the curb line (face of curb).

IMPORTANT: Recess the tile installation by 3mm (+/-1mm) (Compliant to CSA B651-18) to reduce potential damage by snow clearing vehicles.

3. Tamp the tile in grid pattern across the top face, embed- ding the tile into the concrete using a white or (non-marking) rubber mallet or vibrate into place using a vibrating mechanism fixed with a soft base such as wood, at least 1 foot
4. Place sandbags or 25lb weights on the tile to prevent
5. Create an edge around the perimeter of the tile using a 3/8" radius edging tool then float the concrete around the tile's perimeter using a steel

NOTE: Using the 3/8" radius edging tool create a a weep channel from tile to curb to allow water to drain from the surface of the tile.

7. After the concrete has substantially cured, remove the protective plastic wrap by cutting the plastic with a sharp knife tight to the concrete/tile
8. If concrete bled under the plastic, a soft wire brush will clean the residue without damage to the tile



Replaceable Cast in Place

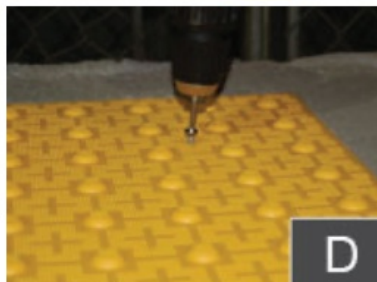
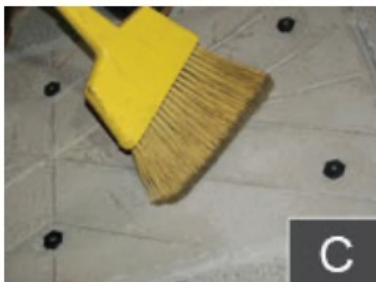
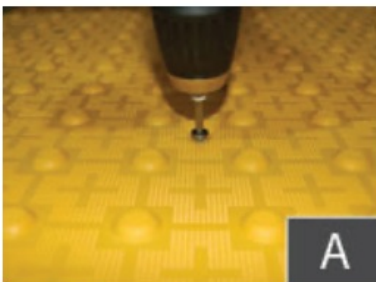
Tactile Walking Surface Indicators

Replacement Instructions:

The following instructions apply to Access® Tile's Replaceable Cast in Place tiles as well as the Radius Curve and Wayfinding version of these tiles.

NOTE: Tiles can be cut to custom sizes, or to make a radius, using a continuous rim diamond blade in a circular saw or mini-grinder. Use of a straightedge to guide the cut is advisable where appropriate.

Recommended Tools and Materials:



- White, or non-marking rubber mallet
- Pry bar

- Broom and dust pan
- Continuous rim diamond blade in a circular saw or min-grinder

Replacement Instructions


1. Unscrew T27 tamper-proof
2. Tap perimeter of tile with a rubber mallet to remove bond of tile to
3. Use a pry bar to pry up an Remove all debris from vacant cavity mold. Vacuum/sweep all crevices.
4. Insert replacement tile, gently apply pressure to seat tile in Reinsert tamper-proof fasteners in hex shape concrete anchors.

For more information about Access Tile Replaceable Cast in Place Tactile Walking Surface Indicators scan the QR code below:



Read More About This Manual & Download PDF:

Documents / Resources

	<p>KINESIK RCIP Recessed Tactile Walking Surface Indicators [pdf] Instructions RCIP Recessed Tactile Walking Surface Indicators, RCIP Recessed, Tactile Walking Surface Indicators, Walking Surface Indicators, Surface Indicators, Indicators</p>
---	--

References

-  [Leading Accessibility Solutions Provider | Kinesik Products](#)