

**KINDRM**  
IT210  
Bluetooth  
Aux Adapter



# KINDRM IT210 Bluetooth Aux Adapter User Manual

[Home](#) » [KINDRM](#) » KINDRM IT210 Bluetooth Aux Adapter User Manual 

## Contents

- [1 KINDRM IT210 Bluetooth Aux Adapter](#)
- [2 INTRODUCTION](#)
- [3 SPECIFICATIONS](#)
- [4 WHAT'S IN THE BOX](#)
- [5 PRODUCT PARAMETERS](#)
- [6 How can my device be paired?](#)
- [7 FEATURES](#)
- [8 SETUP GUIDE](#)
- [9 CARE & MAINTENANCE](#)
- [10 TROUBLESHOOTING](#)
- [11 PROS & CONS](#)
- [12 WARRANTY](#)
- [13 FREQUENTLY ASKED QUESTIONS](#)
- [14 References](#)
- [15 Related Posts](#)

**KINDRM**

**KINDRM IT210 Bluetooth Aux Adapter**



## INTRODUCTION

The KINDRM IT210 Bluetooth Aux Adapter is a small, strong audio receiver made to make your wired devices wireless. With the help of this Bluetooth 5.0 adaptor, wired headphones, home stereos, non-Bluetooth car systems, and more may stream music smoothly. With a range of up to 33 feet and excellent sound quality, the adapter's use of Bluetooth 5.0 technology guarantees steady, fast audio transmission. With voice prompts, music control, and hands-free calling, it's designed to be simple to use and is a perfect addition to any home or vehicle audio system. Offering 8 hours of playback and speaking time on a full charge (1.5 hours), the KINDRM IT210 is a wonderful value at just **\$9.99**. Its dual pairing feature guarantees you never miss a call while listening to music, and its tiny clip form makes it convenient and portable. Anyone wishing to convert their non-Bluetooth gadgets to wireless capabilities should get this Bluetooth adapter.

## SPECIFICATIONS

<b>Product Name</b>	KINDRM IT210 Bluetooth Aux Adapter
<b>Price</b>	\$9.99
<b>Brand</b>	KINGDOM
<b>Connectivity Technology</b>	Bluetooth 5.0
<b>Wireless Communication Standard</b>	Bluetooth 5.0 Chip
<b>Special Features</b>	Hands-Free Calls, Stereo Music, Noise Canceling, Double Pairing, Volume Control, Built-In Microphone
<b>Power Source</b>	Battery Powered
<b>Battery Type</b>	1 Lithium Polymer battery required (included)
<b>Battery Charge Time</b>	1.5 Hours
<b>Battery Weight</b>	3.5 Grams
<b>Lithium Battery Weight</b>	0.5 Grams
<b>Charging While Using</b>	Yes
<b>Audio Output Mode</b>	Stereo
<b>Number of Channels</b>	2
<b>Audio Input</b>	3.5mm audio jack or RCA
<b>Audio Output Type</b>	Bluetooth, 3.5mm Wired
<b>Control Method</b>	Voice
<b>Control Type</b>	Button Control
<b>Human-Interface Input</b>	Buttons
<b>Connector Type Used on Cable</b>	Auxiliary
<b>Mini Portable Size</b>	Yes (Clip-on design, weighs only 0.6 oz)
<b>Compatibility</b>	Compatible with Bluetooth devices and non-Bluetooth audio devices (e.g., speakers, wired headphones, car/home stereo)
<b>Dual Pairing</b>	Yes (Can connect to 2 devices at the same time)
<b>Connection Range</b>	Up to 33 feet
<b>Hi-Fi Stereo Audio</b>	Yes (Bluetooth 5.0 EDR technology for high-fidelity sound)
<b>Warranty</b>	365-day warranty
<b>Charging Voltage</b>	3.7 Volts
<b>Warranty &amp; Support</b>	365-day warranty, support within 24 hours

## WHAT'S IN THE BOX

- Bluetooth Aux Adapter
- User Manual

## PRODUCT PARAMETERS

# Product Parameters

Portable mini pen holder design. Allows you to carry and store better. It won't take up too much space. Make it easier for you to use



## How can my device be paired?

- A non-Bluetooth speaker headset or car stereo should be connected to the receiver. When using the device for the first time, press and hold the power button for three seconds until the red and blue LEDs cycle back and forth.
- Switch on your phone's Bluetooth feature or your music player's Bluetooth feature, then look up and choose "Bluetooth music."
- Started listening to music after a successful pairing.
- **Note:** Before connecting, confirm that your phone is not linked to any other devices.
- **Suggestions:** If the phone can locate the device, it may not be able to pair it or pair it again. The gadget on your phone has to be deleted. Do some more research to link.

## FEATURES

- **Bluetooth 5.0 Technology:** Provides hands-free calls and high-quality audio streaming by providing quick, reliable transmission at a low power consumption.



- **Long Connection Range:** Audio streaming can be done without latency or disruptions thanks to a Bluetooth range of up to 33 feet.
- **8 Hours of Playtime:** With a single charge, you can listen to music and talk for up to 8 hours straight.
- Clear, hands-free calling while driving or multitasking is made possible by the integrated microphone.
- By lowering background noise, noise cancellation improves the quality of calls and music.
- **Dual Pairing:** This feature enables the adapter to connect to two devices simultaneously, allowing you to take calls and listen to music.
- **Mini Portable Design:** Lightweight, small, and clip-equipped for convenient portability.
- **Hi-Fi Stereo Sound:** Provides music that is clear, sharp, and distortion-free by supporting high-fidelity audio transmission.
- **Compatible with Non-Bluetooth Devices:** Compatible with 3.5mm input devices such as home audio systems, automobile stereos, and wired headphones.

# Perfect Compatibility

Perfectly compatible with a variety of smartphone devices. Let your wired headset, home stereo, car stereo, speaker and more. Have wireless capabilities right now. Enjoy wireless music



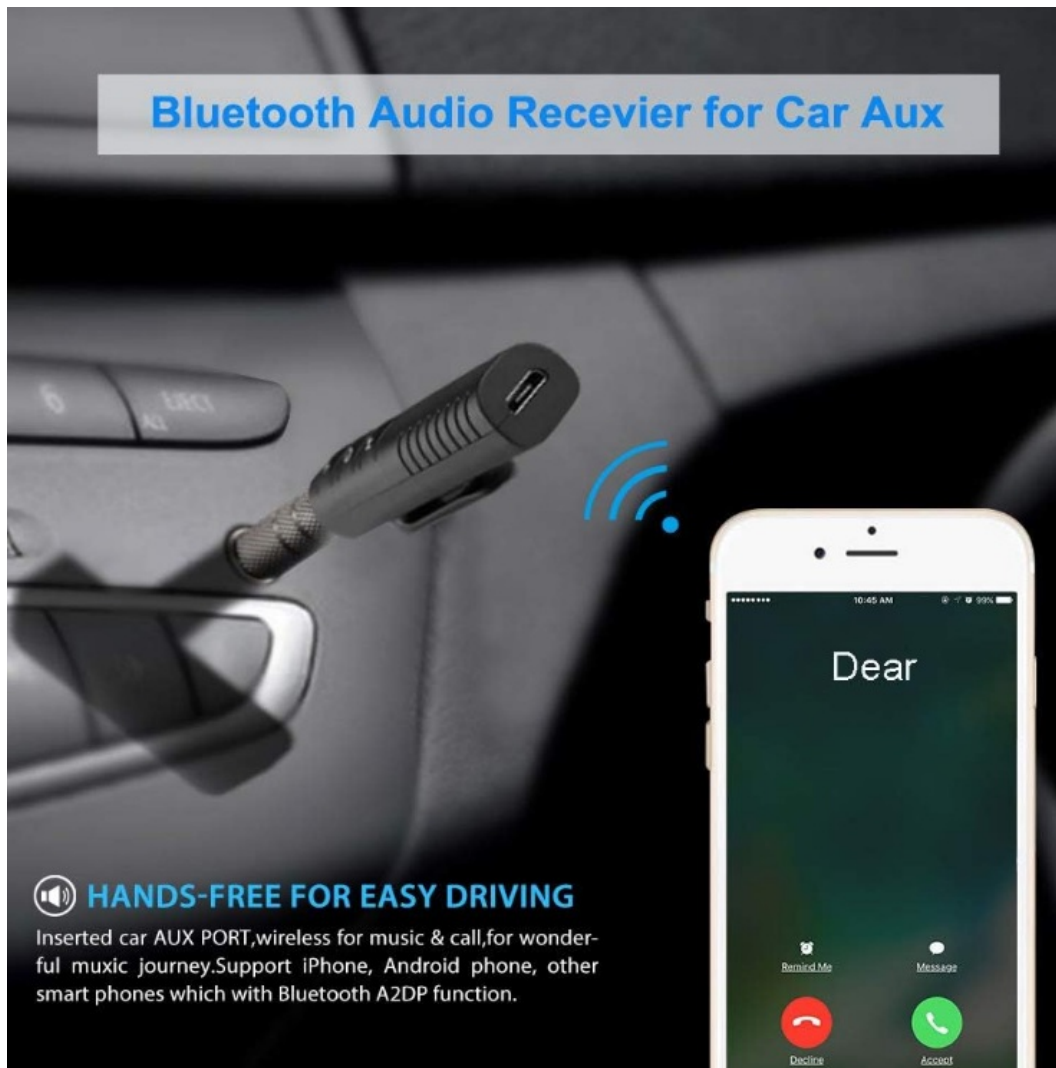
- **Support for Voice Control:** Enables voice-activated functions including taking calls and managing music playing on compatible devices.
- **Easy Charging While in Use:** To ensure that you never have to worry about running out of power, use the receiver while it is charging.
- Numerous smartphones, tablets, and other Bluetooth-enabled devices can be paired with it.
- **Multi-function Button:** This makes things easier by letting you manage calls, music, and volume with just one button.
- **Fast Charging:** You may resume listening to music right away because it fully charges in just 1.5 hours.
- A 365-day warranty and first-rate customer service are included for peace of mind and after-sales support.

## SETUP GUIDE

- **Turn on the Device:** To activate the Bluetooth aux adapter, press and hold the power button.
- **Charging the Adapter:** Make sure the gadget is completely charged before using it by using the accompanying charging wire to connect it to a USB charging source.
- When pairing with a device, make sure your smartphone or other Bluetooth-enabled device has Bluetooth turned on. Select the adapter from your device's Bluetooth list after pressing the pairing button on the KINDRM IT210 to begin pairing mode.



- **Connect to Audio Devices:** To play music wirelessly, plug the 3.5mm audio jack into your home audio system or automobile radio.
- **Dual Pairing Configuration:** To pair two devices, first pair the first device by going into pairing mode and then pair the second device.
- **Control Music Playback:** To play, pause, or skip tracks while they are playing, use the multi-function button.
- **Set Up Hands-Free Calling:** Make sure your smartphone is linked to the adapter. Press the multi-function button to answer a call, then talk into the built-in microphone.
- **Using Siri:** To activate Siri and issue voice instructions on Apple devices, tap the multi-function button.
- **Changing Volume:** To change the audio levels, use the volume controls on the AUX adapter or the device you're connected to.
- **Switch Between Devices:** When the adapter is turned on, it will immediately reconnect to the last device that was linked with it.
- **Use While Charging:** To ensure continuous operation if your battery is dying, keep using the adapter while it is connected to a power source.
- **Using wired Headphones:** To listen to music wirelessly, plug your wired headphones into the adapter's 3.5mm output.
- **Using a Car radio:** To stream music wirelessly to your car radio, plug the adapter into the AUX input.



- **Connecting to Speakers:** To listen to music wirelessly from your Bluetooth-enabled device, connect the adapter to the AUX input of non-Bluetooth speakers.
- **Resetting the Adapter:** To reset the device and try pairing again if you have pairing problems, press and hold the power button for ten seconds.

## CARE & MAINTENANCE

- **Maintain It Clean:** To get rid of dust and grime, wipe the adapter frequently with a gentle, dry cloth.
- Steer clear of extreme temperatures by keeping the Bluetooth adapter somewhere dry and cold. Steer clear of extremely hot or cold temperatures as they may harm the battery or internal parts.
- **Protect from Water:** Because the adapter is not waterproof, keep it out of the way of moisture and water to prevent damage.
- Charge correctly by using a reliable USB charger or the included charger at all times. Steer clear of overcharging to prolong battery life.
- **Store Safely:** To avoid physical harm or loss, keep the adapter in a secure location while not in use.
- **Frequent Charging:** If the adapter isn't being used frequently, make sure it gets charged regularly to extend its battery life.
- **Handle Carefully:** To avoid wear and tear, handle the buttons and aux port gently. Don't let the gadget fall.
- **Avoid Overuse:** To save the battery, do not use the gadget continuously for extended periods while plugged in, even though you can use it while it is charging.
- **Update Firmware:** See if the adapter has any firmware upgrades available. Over time, software improvements might be advantageous for certain devices.
- **Keep an Eye on Pairing Connections :** To reset the connection if the adapter keeps disconnecting, unpair and pair your devices again.
- **Check for Bluetooth Interference:** Make sure there aren't any other Bluetooth devices nearby that could be interfering with your connectivity if you're having problems.
- **Maintain Secure Audio Connections:** To prevent any audio disruptions, make sure your device's 3.5mm audio connector is firmly attached.
- **Turn Off When Not in Use:** If you won't be using the adapter for a long time, turn it off to save battery life.
- **Steer clear of high-impact locations :** Keep the adapter out of places where it can be dropped or broken, like high-impact regions in a suitcase or automobile.
- **Conduct Periodic Testing:** To make sure everything is operating as it should, verify the aux output and the Bluetooth connection regularly.

## TROUBLESHOOTING



<b>No audio output after pairing</b>	Ensure the device is properly connected to the Bluetooth adapter and the volume is turned up.
<b>Bluetooth devices cannot connect</b>	Restart the Bluetooth adapter and the device, then try pairing again.
<b>Audio distortion or lag</b>	Move closer to the adapter or reduce interference from other Bluetooth devices.
<b>Adapter not charging</b>	Check the charging cable and ensure it's properly connected; try using a different USB cable.
<b>The adapter not turning on.</b>	Ensure the adapter has sufficient battery charge. Try charging it for 15 minutes and retry.
<b>Cannot pair with two devices</b>	Disconnect from the first device and then initiate pairing with the second device.
<b>Low call quality</b>	Ensure the adapter's microphone is unobstructed, and try adjusting the volume levels.
<b>Battery drains quickly</b>	Make sure the adapter is fully charged and avoid using it in high-power-consuming situations.
<b>Siri voice assistant not working.</b>	Ensure your device supports Siri and that the button is held long enough to activate it.
<b>The adapter won't reconnect automatically.</b>	Turn off Bluetooth on your device and re-enable it, or manually reconnect the adapter.

## PROS & CONS

### Pros:

1. **Wireless Convenience:** Easily connects to non-Bluetooth devices for hands-free music and calls.
2. **Dual Pairing:** This can connect to two devices at once, allowing seamless switching between music and calls.
3. **Compact & Portable:** Small clip-on design for easy portability and convenience.
4. **Long Battery Life:** Up to 8 hours of talk and playtime with a quick 1.5-hour charge.
5. **High-Quality Audio:** Bluetooth 5.0 ensures stable, high-fidelity audio with low signal latency.

### Cons:

1. **Limited Range:** Bluetooth range of up to 33 feet may be too short for larger spaces.
2. **No Support for AptX or AAC:** Lacks support for higher-end codecs for audiophiles.
3. **Charging Time:** Takes 1.5 hours to fully charge, which might be inconvenient for quick top-ups.
4. **Single Use for Audio:** Primarily designed for audio, with no video or data transmission.
5. **Button Control Only:** Lacks advanced touch controls, relying solely on physical buttons.

## WARRANTY

The KINDRM IT210 Bluetooth Aux Adapter comes with a **365-day warranty**, ensuring peace of mind with every purchase. The warranty covers any manufacturing defects or functional issues. If you encounter any problems, you can contact the manufacturer, and they promise to resolve your issues within 24 hours. This extensive warranty highlights the brand's commitment to product quality and customer satisfaction.

## FREQUENTLY ASKED QUESTIONS

Why isn't my KINDRM IT210 Bluetooth Aux Adapter connecting to my phone?

Ensure that Bluetooth is enabled on your phone and that the KINDRM IT210 Bluetooth Aux Adapter is in pairing mode. Press the button control on the adapter to activate Bluetooth pairing. Once the adapter enters pairing mode, search for it in your phone's Bluetooth settings. Make sure your phone is within the 33 feet (10 meters) connection range for optimal performance.

Why is the sound quality distorted when using my KINDRM IT210 Bluetooth Aux Adapter?

Sound distortion can occur if the Bluetooth connection is unstable or if the signal is weak. Make sure your KINDRM IT210 Bluetooth Aux Adapter is within the recommended 33-foot connection range from your device. Also, check if your phone or audio device supports high-fidelity audio. The adapter uses Bluetooth 5.0 for stable, low-latency audio, so any interference could affect sound quality.

How do I adjust the volume on the KINDRM IT210 Bluetooth Aux Adapter?

The KINDRM IT210 Bluetooth Aux Adapter includes volume control, so you can adjust the sound level directly through the adapter. Simply use the volume buttons on the adapter to increase or decrease the sound as needed. Additionally, you can adjust the volume on your connected device, such as your smartphone or tablet.

What is the maximum range of the KINDRM IT210 Bluetooth Aux Adapter?

The KINDRM IT210 Bluetooth Aux Adapter has a Bluetooth range of up to 33 feet, which provides stable and fast transmission with low latency. This range allows you to move freely within your space without losing connection between your device and the adapter.

Why is my KINDRM IT210 Bluetooth Aux Adapter not producing any sound?

If your KINDRM IT210 Bluetooth Aux Adapter is not producing any sound, ensure that it is properly connected to your audio system via the 3.5mm jack or RCA input. Also, verify that the adapter is powered on and within the Bluetooth range. Check the volume on both the adapter and the connected device to make sure they are turned up.

How do I pair my KINDRM IT210 Bluetooth Aux Adapter with two devices simultaneously?

The KINDRM IT210 Bluetooth Aux Adapter supports double pairing, meaning you can connect it to two devices at the same time. To do this, pair the first device as usual. Then, while the first device is connected, enter pairing mode again and pair with the second device. You will be able to switch between devices seamlessly.

The KINDRM IT210 Bluetooth Aux Adapter is not working with my car stereo. What could be the issue?

Ensure the AUX cable is correctly plugged into both the adapter and the car stereo. Check if your car's stereo is set to the AUX input. If the problem persists, make sure the KINDRM IT210 is fully charged and that the Bluetooth connection is properly established.

How do I reset the KINDRM IT210 Bluetooth Aux Adapter if it's malfunctioning?

To reset the KINDRM IT210, power off the adapter, then press and hold the power button for around 10 seconds until the LED light blinks in a specific pattern (as per the user manual). This should reset the device and restore its normal functionality.

The KINDRM IT210 Bluetooth Aux Adapter is not entering pairing mode. What should I do?

To enter pairing mode, make sure the adapter is powered on. If it doesn't automatically enter pairing mode, press and hold the pairing button for about 5-10 seconds until the LED light begins to flash, indicating it's ready for pairing.

## References

- [User Manual](#)

[Manuals+](#), [Privacy Policy](#)

This website is an independent publication and is neither affiliated with nor endorsed by any of the trademark owners. The "Bluetooth®" word mark and logos are registered trademarks owned by Bluetooth SIG, Inc. The "Wi-Fi®" word mark and logos are registered trademarks owned by the Wi-Fi Alliance. Any use of these marks on this website does not imply any affiliation with or endorsement.