



# Kinan KVM-1508XX 8 Port 19 LCD KVM Console User Manual

[Home](#) » [Kinan](#) » Kinan KVM-1508XX 8 Port 19 LCD KVM Console User Manual 

## Contents

- [1 Kinan KVM-1508XX 8 Port 19 LCD KVM Console](#)
- [2 Product Information](#)
- [3 KVM Installation Diagram](#)
- [4 Opening the Console](#)
- [5 OSD Functions](#)
- [6 Specifications \(19"\)](#)
- [7 Documents / Resources](#)
  - [7.1 References](#)
- [8 Related Posts](#)

# Kinan

**Kinan KVM-1508XX 8 Port 19 LCD KVM Console**



## Product Information

### Specifications

- Product Name: 19LCD KVM Console (8 Port/ 16 Port)
- Print Date: 2023 / 04
- Version: V1.2

### Description

The CAT5 LCD KVM console integrates multiple-port CAT5 KVM switches in a 1U height console. Multiple computers can be controlled from the single monitor-keyboard-mouse console.

### KVM Installation

To install the KVM console, follow these steps:

1. Make sure the KVM console has been connected to the ground.
2. Connect the adapter to the KVM and the PC or server.
3. Connect any available KVM port and KVM adapter with CAT5 cables.
4. Plug the female port of the power cable in the KVM power socket, and plug the male port in the AC power port.

**Note:** If cascading is required, please connect KVM console and KVM switch with an adapter, and ensure that the hotkey is different between the KVM console and KVM switch.

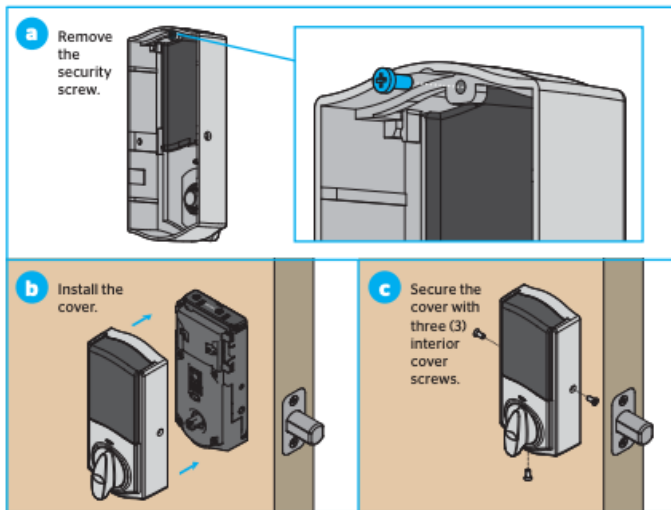
### Hotkey Setting

Follow these steps to check the hotkey setting:

1. Turn off Mouse Hotkey function (F4: Tool ->Mouse HotOn)
2. Keyboard hotkey setting (F3: Set -> OSD Hotkey)
  - Caps Lock + Caps Lock
  - F12 + F12
  - Ctrl + Ctrl + KVM Hotkey

## Opening the Console

1. Release the release catch.



1. Pull the KVM console all the way out until it clicks into place.
2. Rotate the LED module all the way back to expose the LED screen.

Best Resolution: 1280×1024@60Hz

- The KVM makes two beep sounds after power on, an OSD window appears for you to input a username and password. The orange LED and LED tube are flashing before you enter your password.
- LED panel is powered on when the power LED is green. Power on the computer or server after power on the KVM. The factory default password is blank; double click Enter to log in.

## Closing the Console

Close the LED display panel and the power will automatically shut down. Push the release catch in the direction of the arrow, push the LED panel all the way in until it automatically locks up.

## Operating the Monitor

Use the monitor adjust menu buttons to set up and configure the LED display.

## Buttons

- MENU SELECT: Brings up the main menu.
- EXIT/AUTO: Exits the current menu and returns to the previous menu or exits the LED OSD. Press AUTO for automatic configuration.
- SL-/SL+: Moves the menu to make corresponding adjustments.

## LED State

- Green: Running
- Red: Power off or access nonstandard VESA signal
- Flashing green: Energy saving mode or no signal

Press AUTO if the screen migrates after power on or under other circumstances, then the screen auto-configures to its best display state. Note: It may not be adjusted to its best state if part of the display mode is not standard VESA mode. If so, return back to OSD menu to RESET, then it will revert back to normal.

## LED Functions

- Port Selection Buttons & LEDs: Switching freely from port 1 to port 16
- Reset Scan: Press 1 and 2 at the same time for three seconds resets the keyboard and mouse
- Brightness: Initialize
- Station ID

## FAQ

- **Q: How many ports does the KVM console support?**

A: The KVM console comes in two variants, one with 8 ports and another with 16 ports.

- **Q: How do I connect the KVM console to the ground?**

A: Ensure that the KVM console is properly connected to the ground using the provided grounding mechanism.

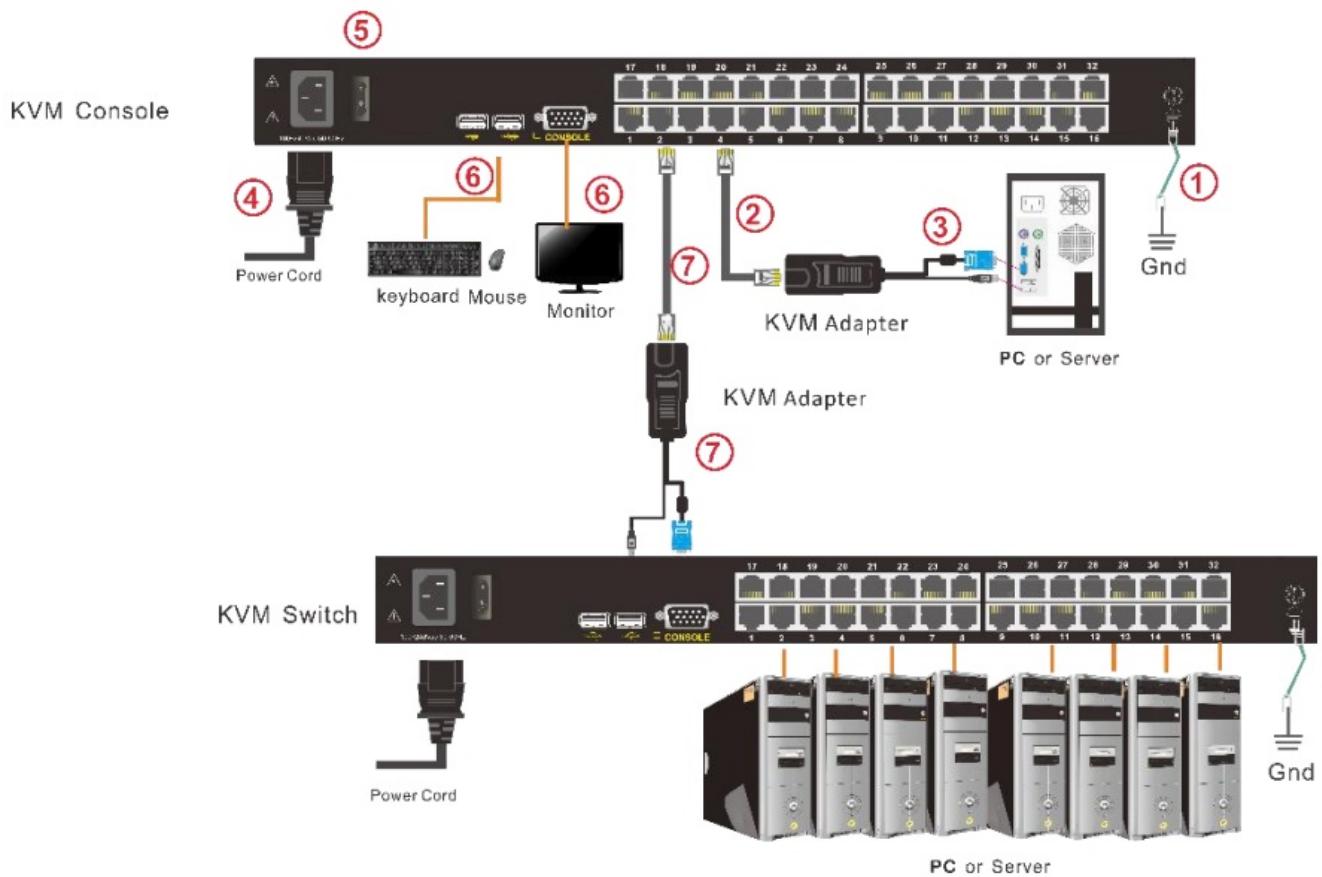
- **Q: What is the default password for logging into the KVM console?**

A: The factory default password is blank; you can log in by double-clicking Enter.

The CAT5 LCD KVM console integrates multiple-port CAT5 KVM switches in a 1U height console. Multiple computers can be controlled from the single monitor-keyboard-mouse console.

## KVM Installation Diagram

1. Make sure the KVM console has been connected to the ground. ( ①)
2. Connect the adapter to the KVM and the PC or server(②③)
3. Connect any available KVM port and KVM adapter with CAT5 cables. ( ④)
4. Plug the female port of the power cable in the KVM power socket, and plug the male port in the AC power port.  
( ⑤)



## Note

1. Connect external USB keyboard, mouse and monitor according to the (6) step in
2. If cascading required, please connect KVM console and KVM switch with adapter (7), and Hotkey need to be different with KVM console and KVM switch.

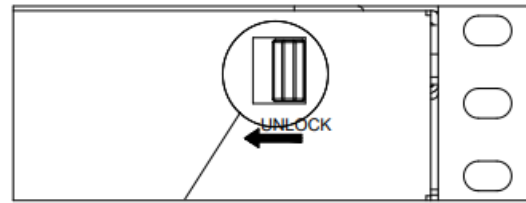
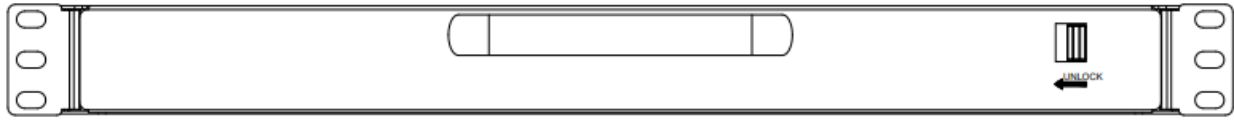
## Please check the hotkey setting

1. Turn off Mouse Hotkey function (F4: Tool -> Mouse Hot On )
2. Keyboard hotkey setting (F3: Set -> OSD Hotkey)

**【Caps Lock】 + 【Caps Lock】**  
**【F12】 + 【F12】**  
**【Ctrl】 + 【Ctrl】 + 【KVM Hotkey】**

## Opening the Console

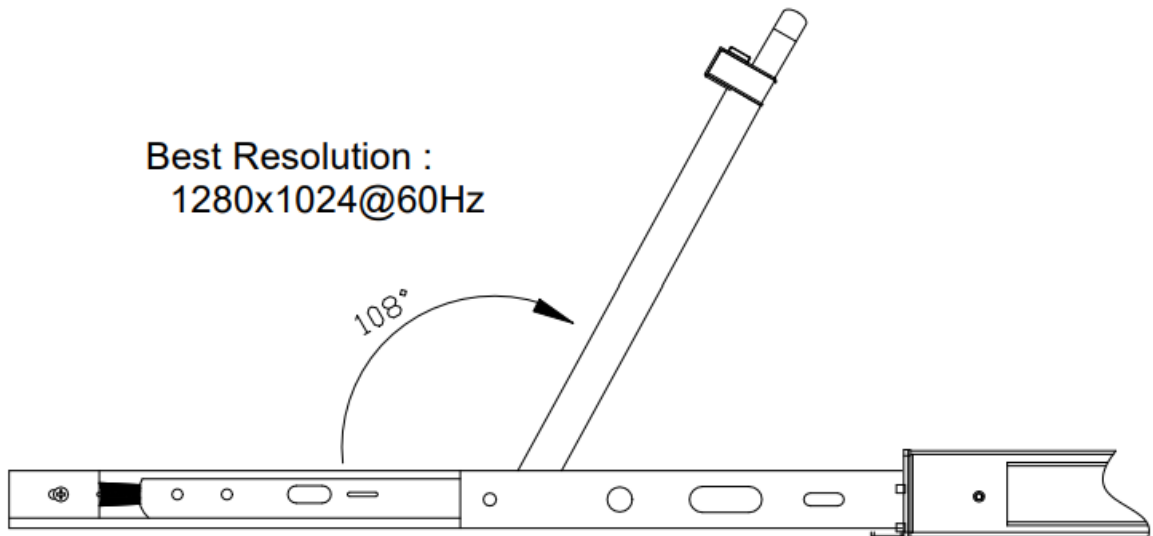
1. Release the release catch;



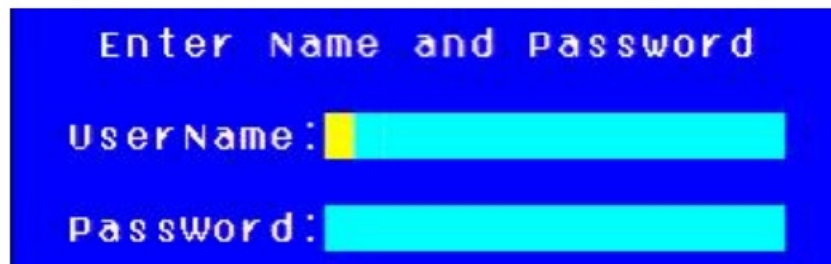
UNLOCK

**Note:** The release lock can only do horizontal locking, it doesn't bear any load.

2. Pull the KVM console all the way out until it clicks into place;
3. Rotate the LED module all the way back to expose the LED screen; the LED module can be rotated up to 108°.



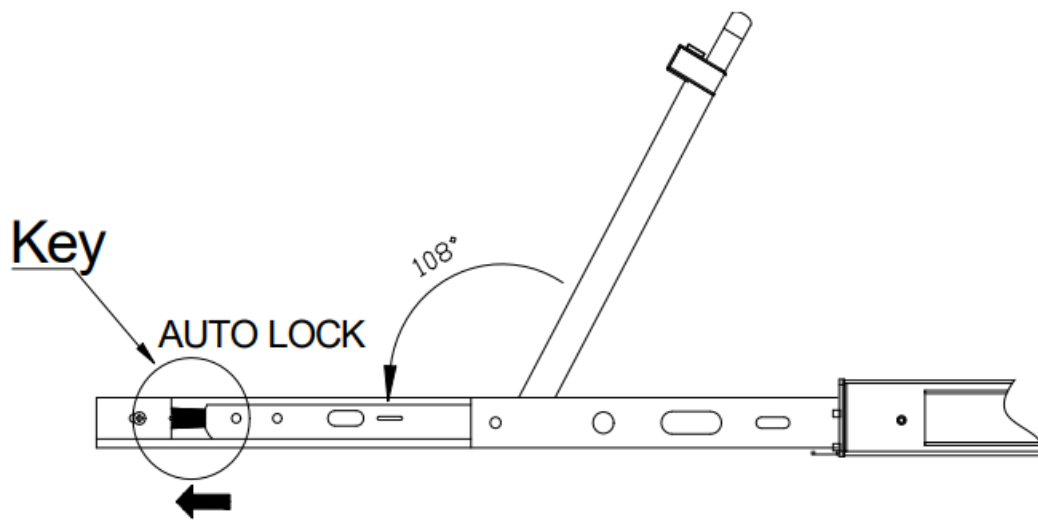
4. The KVM makes two “beep” sounds after power on, an OSD window appears for you to input user name and password. The orange LED and LED tube are flashing before you enter your password.



5. LED panel is powered on when the power LED is green.
6. Power on the computer or server after power on the KVM. The factory default pass word is blank; double click “Enter” to log in.

### Closing the console

- Close the LED display panel and the power automatically shut down.
- Push the release catch in the direction of the arrow, push the LED panel all the way in until it automatically lock up.



## Operating the Monitor



**Figure 3.4 Monitor adjust menu buttons**

The LED OSD allows you to set up and configure the LED display.

Buttons	Functions
MENU SELECT	Brings up the main menu.
EXIT/AUTO	Exits the current menu and returns to the previous menu or exits the LED OSD. Press AUTO for automatic configuration.
SL-/SL+	Moves the menu to make corresponding adjustment.
LED state	<ul style="list-style-type: none"> <li>• Green: Running</li> <li>• Red: Power off or access nonstandard VESA signal</li> <li>• Flashing green: Energy saving mode or no signal</li> </ul>





Press AUTO if the screen migrates after power on or under other circumstances, then the screen auto-configures to its best display state.

### Note:

- It may not be adjusted to its best state if part of the display mode is not standard VESA mode. If so, return back

to OSD menu to RESET, then it will revert back to normal.

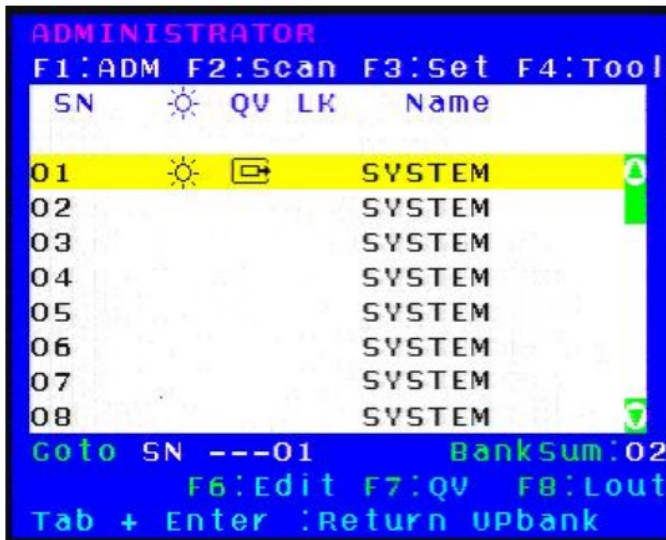
- It is recommended to set up the display mode at 1280×1024@60Hz, refresh rate at 60Hz.

No.	Components	Function
1	1-16	Switching freely from port 1 to port 16
	Reset	Press <b>【1】</b> and <b>【2】</b> at the same time for three seconds resets the keyboard and mouse
	Scan	Press <b>【7】</b> and <b>【8】</b> at the same time for three seconds enters the auto scan mode.
	Brightness 	Press <b>【3】</b> for three seconds enters brightness adjusting mode. 33 are flashing on the LED tube. Then press <b>【5】</b> , <b>【6】</b> to adjust. Press <b>【3】</b> exits or waits for five seconds and it will auto-exit.
	Definition 	Press <b>【4】</b> for three seconds enters definition adjusting mode. 44 are flashing on the LED tube. Then press <b>【5】</b> , <b>【6】</b> to adjust. Press <b>【4】</b> exits or waits for five seconds and it will auto-exit
	Initialize  	Press <b>【6】</b> for three seconds will initialize the brightness and definition of each port.
2	Port Selection Buttons & LEDs	Indicator LEDs are built into the switches, the online LED light is on the left and the selected LED light is on the right. 1) An online LED light (green) indicates that the KVM has connected to its corresponding computer and power on. 2) A selected LED light (orange) indicates that the computer attached to its corresponding port is up and running.
3	Station ID	Display the current port

### OSD Operation

Double click the right button of the mouse or double click hotkey Scroll Lock to invoke below OSD main menu. You can customize the OSD hotkeys; find more details in OSD function instructions.



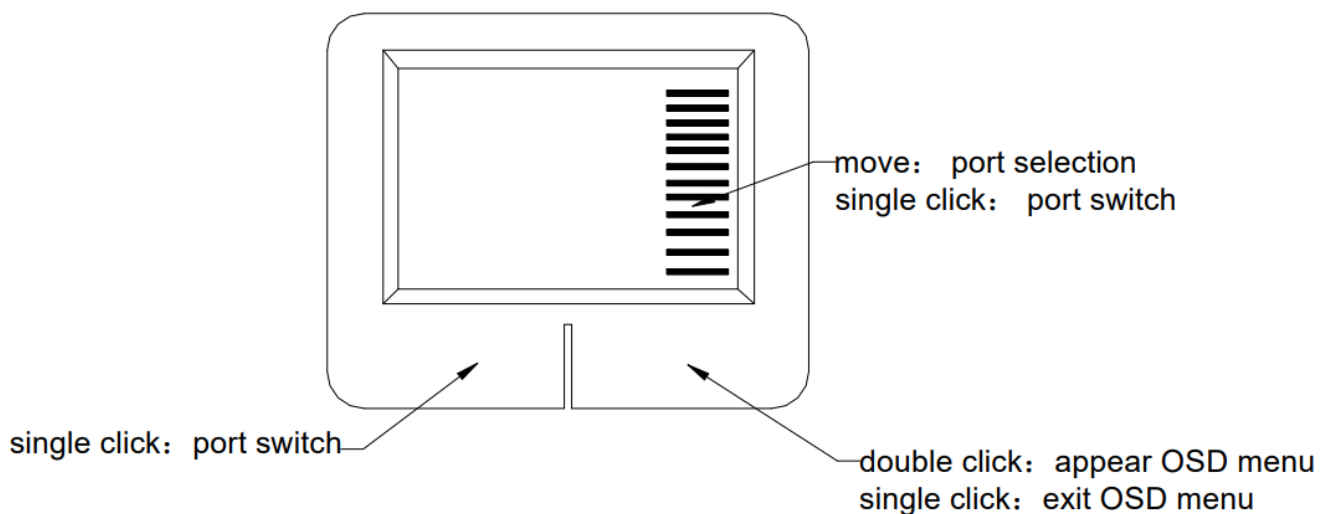


Heading	Explanation
SN	Port numbers
	On line
	System On
	Quick View
	BRC Port
	View only
Name	Port name

#### To access the OSD menu through keyboard:

1. In the submenus that appears, moving the highlight bar to your selected port and then press Enter.
2. Press any key from 0-9 to enter any port of current station

#### To access the OSD menu through mouse:



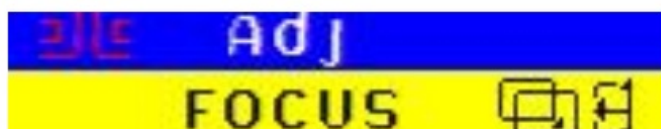
**\*Note:** Operate via keyboard after invoke the OSD menu via the touchpad.

#### OSD Functions

Menu	Keys	Submenu/Explanation
ADM	F1	<ul style="list-style-type: none"> <li>Set User login-Set User login account and password Set accessible-Set access permissions</li> <li>BRC Mode -monitor multiple computers at the same time Load Default-reset the menu to the original factory default settings</li> </ul>
Scan	F2	<ul style="list-style-type: none"> <li>All-Lists all the ports on the installation</li> <li>Power On-lists only powered on ports that have attached computers.</li> <li>Quick View-Lists only the ports that have been selected as</li> <li>Quick View ports</li> </ul>
Set	F3	<ul style="list-style-type: none"> <li>Auto Scan-set scanning time period</li> <li>Port ID-set how long a port displays on the monitor OSD Hotkey-set OSD hotkeys</li> <li>Lout Time off- to set the time out value</li> </ul>
Tool	F4	<ul style="list-style-type: none"> <li>Reset RGB-Press Enter reset RGB</li> <li>Beeper On -press Enter switch Bee sounds</li> <li>Mouse Hot On -press Enter to close touchpad operating on OSD.</li> <li>Restore Values-press Enter restore the current user default value.</li> <li>About KVM- press Enter shows the KVM version</li> </ul>
Edit	F6	Edits port names
QV	F7	Start or close Quick View
Lout	F8	Log out/lock the KVM
Exit	Esc	Press this key exits OSD menu
	Scroll Lock	Press this key exits OSD menu
	Num Lock	Press this key exits OSD menu

The display screen will be distorted if the CAT5 cable is too long, for this case, you can adjust according to below steps:

1. Press + and ADJ FOCUS will pop up, then press + , - to adjust definition.
2. Press and ADJ BRIGHT will pop up, then press , . to adjust brightness.



## Specifications (19")

Model		8 Port	16 Port
Computer connections	Direct	8	16
	Max	256	512
Port emulation	Keyboard, mouse	PS/2, USB	
LCD monitor	LCD model	SXGA TFT	
	View area	19"	
	Optimum resolution	1280×1024@60Hz	
	Display color	16.7 M	
	Brightness	250cd/m <sup>2</sup> T y p	
	Contrast ratio	1000 : 1 T y p	
	Pixel pitch(mm)	0.2928(H) × 0.2928(W)	
Mouse	X/Y resolution	>1000 points / inch, (40 points/mm)	
	Touchpad with track ball	Eliminates the need for an external mouse	
Keyboard		99 keys (82 keys main keyboard +17 independent small number pad)	
Port selection		Front panel pushbuttons, hotkeys, OSD menu	
Input power		100V- 240Vac , 50-60Hz , <1.5A	
Power consumption		20W	21W
Operating temperature		0 — 50 °C	
Store temperature		-20 — 60 °C	
Humidity		0—80% RH, non-condensing	
Net weight		13.4kg	13.4kg
Product dimension (W × D × H)		448mm×605mm×42.5mm	
Package dimension (W × D × H)		765mm×615mm×185mm	

## Documents / Resources

<div>19 " LCD KVM Console (8 Port/ 16 Port) User Manual</div> <div></div> <div>PDF MAN 1508XX 80001121</div>	<div><a href="#">Kinan KVM-1508XX 8 Port 19 LCD KVM Console</a> [pdf] User Manual</div> <div>KVM-1508XX 8 Port 19 LCD KVM Console, KVM-1508XX, 8 Port 19 LCD KVM Console, LCD K VM Console, KVM Console, Console</div>
---	--

References

- [User Manual](#)

[Manuals+](#), [Privacy Policy](#)

This website is an independent publication and is neither affiliated with nor endorsed by any of the trademark owners. The "Bluetooth®" word mark and logos are registered trademarks owned by Bluetooth SIG, Inc. The "Wi-Fi®" word mark and logos are registered trademarks owned by the Wi-Fi Alliance. Any use of these marks on this website does not imply any affiliation with or endorsement.