

Kinan KFH286K IP KVM Matrix Extender User Manual

Contents

- 1 KFH286K IP KVM Matrix Extender
 - 1.1 IP KVM Matrix Extender User Manual
 - 1.2 User Information
 - 1.3 User Notification
 - 1.4 1. Introduction
 - 1.5 1.1 Function
 - 1.6 1.2 Feature
 - 1.7 1.3 Safety Instructions
 - 1.8 1.4 Product Overview
 - 1.9 2. Installation 2.1 Installation of Extender
 - 1.10 Matrix switching system
 - 1.11 Connection Diagram of KFH286K
 - 1.12 Matrix Connection Diagram
 - 1.13 3. Extender Configuration 3.1 Use of UI Interface
 - 1.14 [Equipment Info] Select [] to switch on/off the system state.
 - 1.15 User Setting:
 - 1.16 Connection Diagram of Collaborative Sharing Push & Get
 - 1.17 4. Specifications Specifications of KFH286K
- 2 Documents / Resources
 - 2.1 References
- 3 Related Posts

KFH286K IP KVM Matrix Extender



IP KVM Matrix Extender User Manual

www.kinankvm.com

@all right reserved Shenzhen Kinan Technology Co., Ltd

Print date: 2024 /11

Version: V1.1

User Information

Telephone Support

For telephone support, please call below number:

TEL 0086-755-26755041

MOBILE 0086-13714411566

User Notification

All information, documentation, and specifications contained in this manual are subject to change without prior notice. The manufacturer does not make any explicit or implied statement or guarantee about the contents of this document, especially for merchantability or fitness for any specific purpose. Any manufacturer's equipment described in this manual is sold or licensed as it is. If the equipment is damaged artificially after purchase, the buyer (not the manufacturer, its distributor or reseller) shall bear all costs for necessary repair and any losses caused by equipment defects. If the correct operating voltage setting is not selected before operation, the manufacturer will not be responsible for any damage caused by system operation. Please make sure the voltage has been set correctly before use.

1. Introduction

The KFH286K IP KVM matrix extenders are highly optimized KVM extenders. The point-to-point connection supports transmission distance of 120m, and resolution up to 3840×2160@60Hz. This series of extenders can be connected to an 1G network switch to form a matrix switching system, which supports point-to-point (P2P) mode and matrix (Matrix) mode. The matrix switching system composed of extenders supports up to 9999 nodes by using a centralized management software, and it can support up to 40 nodes without using a centralized management software. It can connect multiple signal sources (such as servers, workstations, cameras and video walls).

With the matrix switching system, computers and servers can be located in the central server room far from the workstation to improve security, reduce the temperature and noise of the working environment, and achieve a quiet and friendly human-computer interaction environment.

The video compression algorithm of KFH286K matrix extender is a perfect combination of high-quality image and low latency (<8ms). The USB and video signals are transmitted through CAT5e/6/7 network cable.

It supports USB devices such as touch screen, USB sound card, printer, etc., it can also support USB storage devices.

1.1 Function

This product is intended to be used as a device to increase the distance that a keyboard, monitor and mouse can be placed from a computer. This product is intended for professional use. The product should not be used in potentially explosive environments.

The product may only be used according to the instructions as described in this manual. All use, other than that described in this manual, is seen as unintended use. In this product, the product connected to the host end is called the transmitter (TX), and the product connected to the display end is called the receiver (RX).

1.2 Feature

- HDMI / USB2.0/Audio - IP KVM Matrix Extender
- Dual screen version
- Point-to-point connection supports maximum extension distance 120m/394ft
- Support seamless switching
- Freeze the last image after the disconnection of transmitter and receiver

- Support resolution up to 3840×2160@60Hz (4:4:4)
- USB transmission rate up to 480Mbit/s
- HDMI lossless real-time full HD transmission
- Support transmission through fiber optic and network (CAT5e/6/7)
- Support one Administrator account and one User account
- Support remote computer power on and off

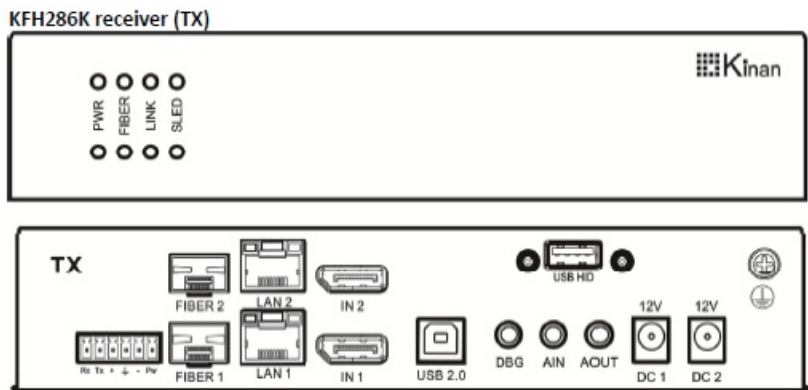
1.3 Safety Instructions

WARNING! Read and understand all safety instructions.

- Please follow all instructions. This will avoid accidents, fire, explosions, electric shocks or other hazards that may result in damage to property and/or severe or fatal injuries. Please ensure that everyone who uses the product has read and followed these warnings
- Keep all safety information and instructions for future reference and pass them on to subsequent users of the product.
- The manufacturer is not liable for cases of material damage or personal injury caused by incorrect handling or non-compliance with the safety instructions. In such cases, the warranty will be voided.
- The product is not allowed to use in potentially explosive environments.
- Check the product and the cables for any damage before use. If there is any visible damage, a strong odour, or excessive overheating of components unplug all the connections immediately and stop using the product.
- If the product is not installed and used in accordance with this manual, it may cause disruptive interference with radio or television reception or affect other electronic products in residential areas.
- Use shielded cables to connect components to avoid the above interference.
- Only the power adapter included with the product should be used as the power supply. Do not use other adapters.
- Make sure your local voltage matches the rating indicated on the product before powering on it.
- The product must be connected to a permanent and earthed AC wall socket.
- Protect cables from being strained, pinched or buckled and place them in a way to prevent people from tripping over the cord.
- Avoid any damage to power adapter.
- Use the product with a suitable, properly installed and easily accessible power socket to make sure the product can be disconnected from the power socket at all times.
- Disconnect the product when not in use.
- Never touch the adapter with wet hands.
- Use the product within the specified performance limits.
- Keep the product away from any flammable materials like curtains.
- Protect the power adapter from use by third parties (particularly children).

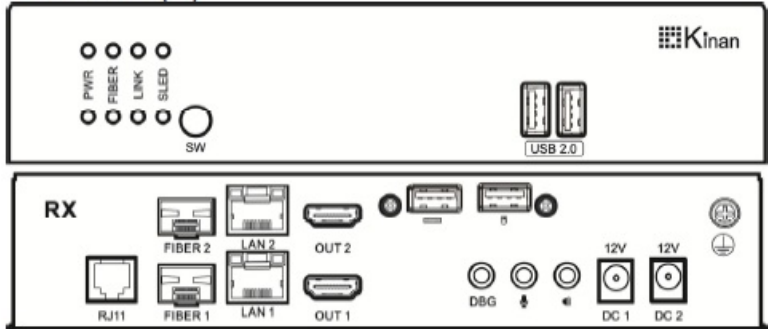
- Keep the product away from heater.
- Do not drop or hit the product.






1.4 Product Overview



NO	Components		Description
1	LED	POWER	Power indicator
		FIBER	Connection indicator of FIBER
		LINK	Connection indicator
		SLED	System indicator
2	USB HID		connect to PC or server
3			Reserved interfaces
4	FIBER2 FIBER1		Fiber interface
5	LAN2,LAN1		LAN interface
6	IN2, IN1		HDMI video input
7	USB2.0		USB-B, connect to PC or server
8	DBG		Debug interface
9	AIN		Audio input
10	AOUT		MIC output
11	DC1, DC2		Connect to the 12V power supply
12			Ground the device

KFH286K sender (RX)



NO	Components		Description
1	LED	POWER	Power indicator
		FIBER	Connection indicator of FIBER
		LINK	Connection indicator
		SLED	System indicator
2	SW		Remote power on/off button
3	USB2.0		Connect to USB2.0 peripherals
4			Connect to a USB keyboard
5			Connect to a USB mouse
6	RJ11		Reserved interfaces
7	FIBER2, FIBER1		Fiber interface
8	LAN2, LAN1		LAN interface
9	OUT2, OUT1		HDMI video output
10	DBG		Debug interface
11			MIC input
12			Audio output
13	DC1, DC2		Connect to the 12V power supply
14			Ground the device

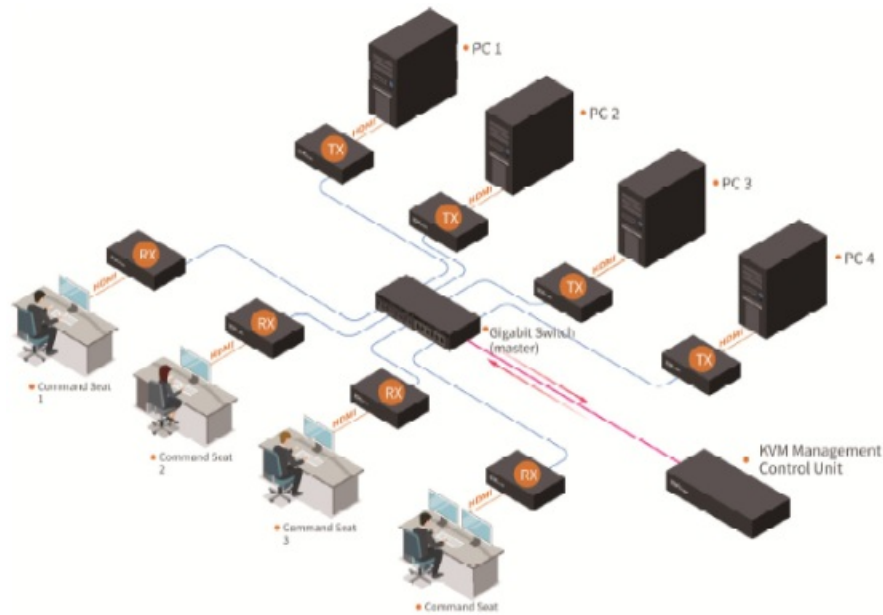
*SW key: The “- +” interface of [Rx Tx + ↓ - Pw] on Transmitter end is required to connect to the computer and the computer need to be set up.

2. Installation

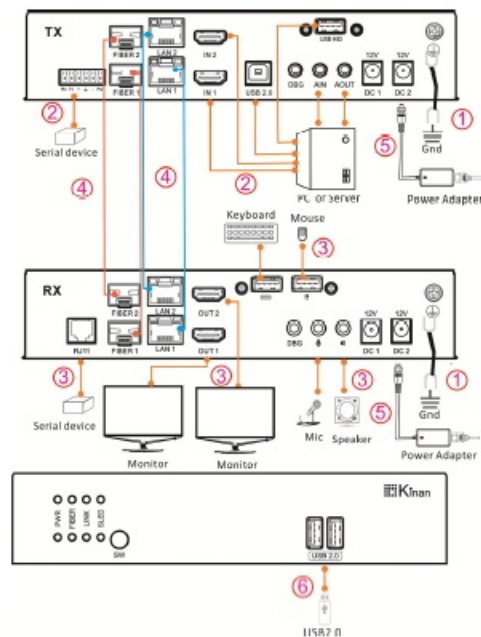
2.1 Installation of Extender

Warning! Please read and be aware of all safety instructions before installing the equipment. The extender can be set as a point-and-point mode to access a single PC, and also can access multiple PCs through matrix switching system.

Matrix switching system

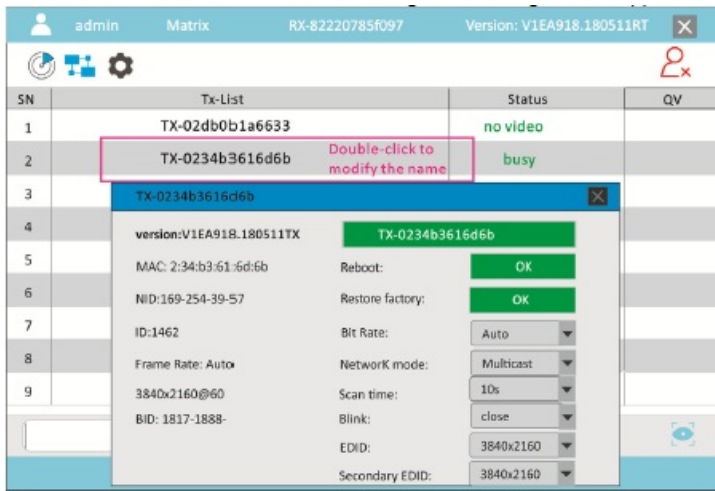


Connection Diagram of KFH286K



1. Make sure the KVM extender is grounded (See ① in the above diagram)
2. Connect the KFH286K_TX to the HDMI video port, USB port and audio port of a computer. (See ② in the above diagram)
3. Connect the KFH286K_RX to keyboard, mouse, monitor and audio device. (See ③ in the above diagram)
4. Connect the transmitter and receiver interfaces via optical fiber or CAT5E cable. (See ④ in the above diagram)
5. Power on the transmitter and receiver. (See ⑤ in the above diagram)
6. Connect the USB peripheral to the receiver (KFH286K_RX) (See ⑥ in the above diagram)

Matrix Connection Diagram



Function Name Description

TX-0234b3616d6b Click to change the name of TX, and then click “ESC” button to confirm your modification.

Reboot Reboot the device

Restore factory Restore Factory Defaults

Bit Rate Auto, 10M ,50M, 100M, 150M, 200M

Network mode Multicast mode

Unicast mode

Scan time 10s, 20s, 30s, 60s, 90s ,120s, 150s, 180s, 210s, 255s

Blink

To set PWR flashing time, check TX connection status.

You can choose from “Close, 1 min, 10 min, 30 min, 60 min, always”.

EDID

AUTO, 1024×768, 1280×1024, 1366×768, 1600×900 ,
1920×1080, 1920×1200, 2560×1440, 3840×2160, 1152×864,
2048×2048,1600×1200,1920×1920, 2160×2160, 2560 x1600,
3840 x1080, 4096 x1080, 2560 x2880

Secondary EDID

AUTO, 1024×768, 1280×1024, 1366×768, 1600×900 ,
1920×1080, 1920×1200, 2560×1440, 3840×2160, 1152×864,
2048×2048,1600×1200,1920×1920, 2160×2160, 2560 x1600,
3840 x1080, 4096 x1080, 2560 x2880

[Auto Scan Setting]

Select TX devices, click the QV item, and then click “ ” to automatically scan the selected device (default scan time: 10s).



Scan time: 10s, 20s, 30s, 60s, 90s, 120s, 150s, 180s, 210s, 255s

[User Login Interface]

The default setting mode is “ ”(See User Setting on Page 18), the login interface will only appear after clicking the icon



UserName:
Password:

User Name:	admin
Password:	admin

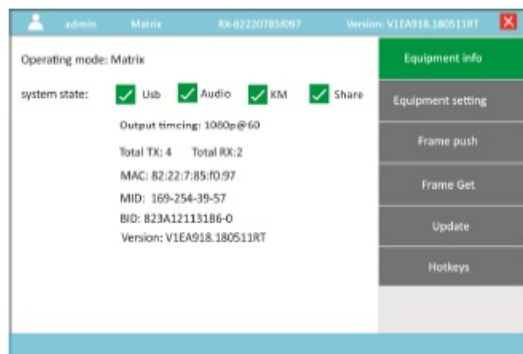
[The list of matched TX/RX] Click function key [], and then the following menu appears:

admin	Matrix	RX-82220785f097	Version: V1EA918.180511RT
TX		RX	
TX-02db0b1a6633		RX-826d9539bf91	
TX-0234b3616d6b		RX-82220785f097	
TX-02da799ae375		RX-82220785f097	
TX-02bf64e94952		RX-82bcf4d41966	

When you see the device name in the TX list and the RX list, that means that the TX and RX are matched successfully.

3.2 Function Setting

Click the function key [setting], and then below menu appears:



Operating mode: Matrix

system state: ☒ Usb ☒ Audio ☒ KM ☒ Share

Output timing: 1080p@60

Total TX: 4 Total RX: 2

MAC: 82:22:7:85:f0:97

MID: 169-254-39-57

BID: 823A121131B6-0

Version: V1EA918.180511RT

Equipment info

Equipment setting

Frame push

Frame Get

Update

Hotkeys

Function Name Description

Equipment Info To switch on/off USB, Audio, KM, Get & Push

Equipment Setting System and User Settings

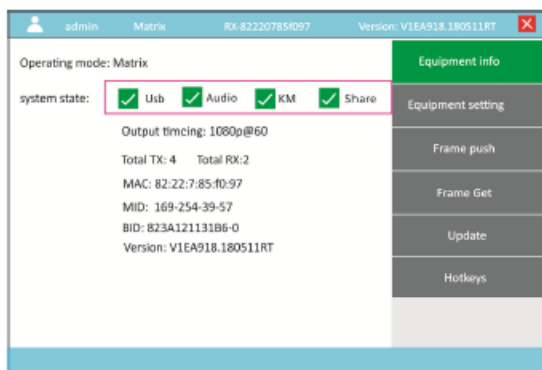
Frame Push Push the video and USB signals from current receiver to the chosen receiver in the list

Frame Get Get the video and USB signals from any receiver in the list to the current receiver

Upgrade Update device

Hotkey Hotkeys of device

[Equipment Info] Select [] to switch on/off the system state.



Function Name Description

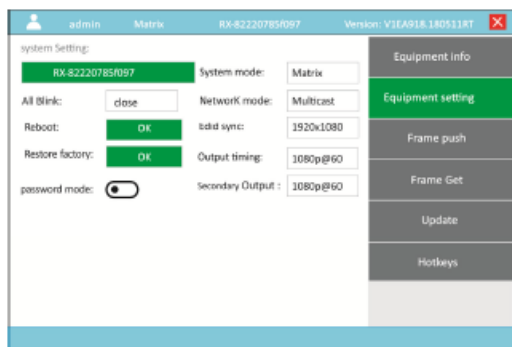
Usb2.0 USB2.0 function

Audio Audio function

KM Keyboard and Mouse

Share Push video & Get video

[Equipment Setting]



Function Name Description

RX-82220785f097 Click to change the name of RX, and then click “ESC” button to confirm your modification.

All Blink

To set PWR flashing time

You can choose from “Close, 1 min, 10 min, 30 min, 60 min, always”.

Reboot Reboot device

Restore factory Restore factory defaults

System mode

Matrix mode

P2P mode

Node mode

Network mode Multicast mode

Unicast mode

Edid Sync

AUTO, 1024×768, 1280×1024, 1366×768, 1600×900 ,
1920×1080, 1920×1200, 2560×1440, 3840×2160, 1152×864,
2048×2048,1600×1200,1920×1920, 2160×2160, 2560 x1600,
3840 x1080, 4096 x1080, 2560 x2880

Output timing

Secondary output



1080P@60, 2160P@60, 640 x 480P@60, 800x600P@60

1024 x 768P@60,1280 x1024P@60, 1366×768, 1440×900

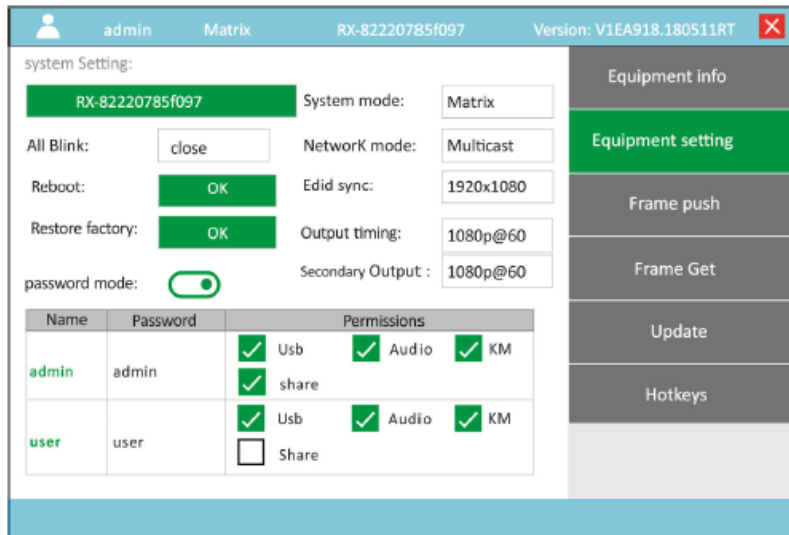
, 1920×1200, STRICT PASS, AUTO PASS

Password mode Modify user name and set permissions

User Setting:

Click “”, swipe right to “”, and then the following menu appears. You can modify user password and set permissions.

You can't set the user name and password in Node mode, they can be set on the management control unit.



The screenshot shows the 'User Setting' interface. At the top, it displays 'admin', 'Matrix', 'RX-82220785f097', and 'Version: V1EA918.180511RT'. The 'system Setting:' section includes fields for 'RX-82220785f097', 'System mode: Matrix', 'All Blink: close', 'Network mode: Multicast', 'Reboot: OK', 'Edid sync: 1920x1080', 'Restore factory: OK', 'Output timing: 1080p@60', and 'Secondary Output: 1080p@60'. The 'password mode:' is set to 'on'. Below this is a table with columns 'Name', 'Password', and 'Permissions'.

Name	Password	Permissions
admin	admin	<input checked="" type="checkbox"/> Usb <input checked="" type="checkbox"/> Audio <input checked="" type="checkbox"/> KM <input checked="" type="checkbox"/> share
user	user	<input checked="" type="checkbox"/> Usb <input checked="" type="checkbox"/> Audio <input checked="" type="checkbox"/> KM <input type="checkbox"/> Share

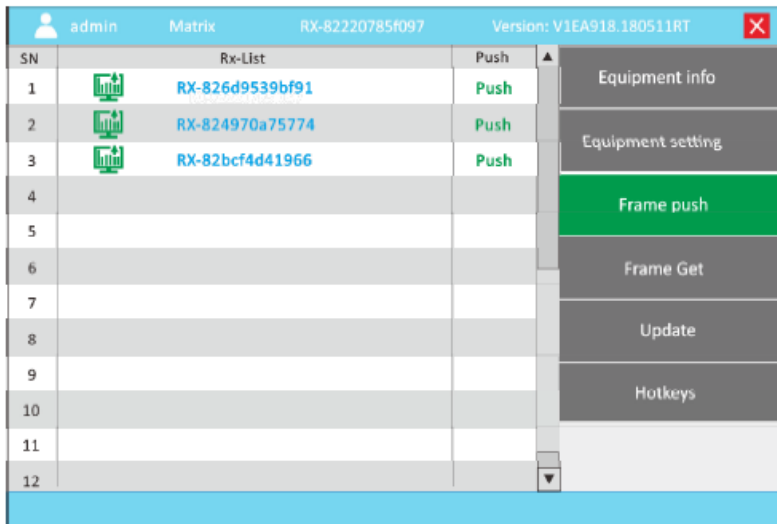
On the right side, there is a vertical menu with options: 'Equipment info', 'Equipment setting' (highlighted in green), 'Frame push', 'Frame Get', 'Update', and 'Hotkeys'.

Function Name Description




Password Double click the name in the password list to modify the password of corresponding user.

Permissions Set permissions for USB2.0, Audio, KM, Frame Get, and Frame Push.

[Frame Push]






The screenshot shows the 'Frame Push' interface. At the top, it displays 'admin', 'Matrix', 'RX-82220785f097', and 'Version: V1EA918.180511RT'. Below this is a table with columns 'SN', 'Rx-List', and 'Push'.

SN	Rx-List	Push
1	 RX-826d9539bf91	Push
2	 RX-824970a75774	Push
3	 RX-82bcf4d41966	Push
4		
5		
6		
7		
8		
9		
10		
11		
12		

On the right side, there is a vertical menu with options: 'Equipment info', 'Equipment setting', 'Frame push' (highlighted in green), 'Frame Get', 'Update', and 'Hotkeys'.

Click [Push] to push the video and USB signals from current receiver to the chosen receiver in the list.

[Frame Get]

admin Matrix RX-82220785f097 Version: V1EA918.180511RT			
SN	Rx-List		Get
1		RX-826d9539bf91	Get
2		RX-824970a75774	Get
3		RX-82bcf4d41966	Get
4			
5			
6			
7			
8			
9			
10			
11			
12			

Equipment info

Equipment setting

Frame push

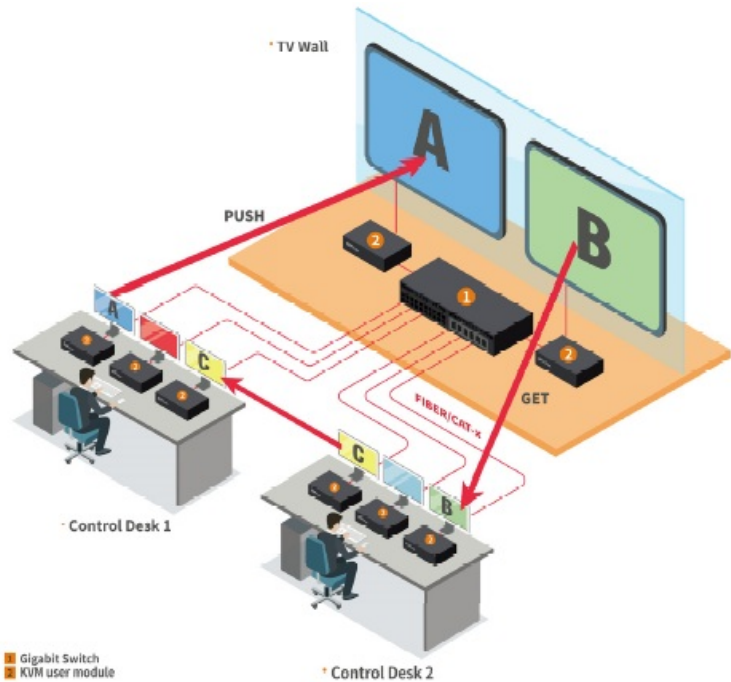
Frame Get

Update

Hotkeys

Click [Get] to get the video and USB signals from any receiver in the list to the current receiver.

Connection Diagram of Collaborative Sharing Push & Get

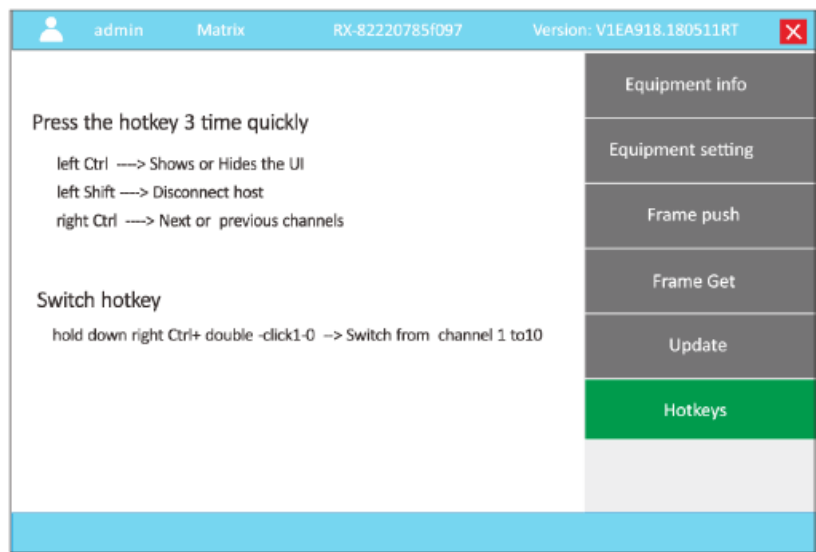


[Update]

admin Matrix RX-82220785f097 Version: V1EA918.180511RT			
<div><div>RX</div><div>TX</div></div>		<div><div>Equipment info</div><div>Equipment setting</div><div>Frame push</div><div>Frame Get</div><div>Update</div><div>Hotkeys</div></div>	

Click RX to update RX
Click TX to update TX

[Hotkeys]



- Function Name Description
- Left _Ctrl** Shows or Hides the UI
 - Left _Shift** Disconnect host
 - Right_ Ctrl** Next or previous channels
 - Right_Ctrl+Doulbe 1-0** Switch from channel 1 to 10

4. Specifications
Specifications of KFH286K

Specifications		KFH286K_TX	KFH286K_RX
Connections	HDMI input	2	N/A
	HDMI output	N/A	2
	Power	2x 12V	2x 12V
	LAN port	2x RJ45	2x RJ45
	Optical Module	2x SFP+	2x SFP+
	Mic	3.5MM Stereo Jack (Green)	3.5MM Stereo Jack (Pink)
	Speaker	3.5MM Stereo Jack (Pink)	3.5MM Stereo Jack (Green)
	Square USB	1	N/A
	USB	1	4
Resolution		3840x2160@60Hz	
Cable		CAT5e/6/7 or Optical Fiber Cable	
I/R Value		DC12V / 3A	DC12V / 3A
Power consumption		15W	16W
Operating temperature		0—50 ℃	
Storage temperature		-20—60 ℃	
Humidity		0—80% RH, non-condensing	
Material		Metal	
Net weight(kg)		0.88 kg	0.88 kg
Product dimension (W × D × H)		212mm x 114.3 mm x 44mm	
Package dimension (W × D × H)		243mmx 209mm x 98mm	243mmx 209mm x 98mm

Documents / Resources

 <p>The thumbnail shows the cover of the 'IP KVM Matrix Extender User Manual'. It features the Kinan logo at the top, followed by the title 'IP KVM Matrix Extender' and 'User Manual'. At the bottom, there is a small line of text: 'Kinan KFH286K IP KVM Matrix Extender User Manual'.</p>	<p>Kinan KFH286K IP KVM Matrix Extender [pdf] User Manual KFH286K IP KVM Matrix Extender, KFH286K, IP KVM Matrix Extender, KVM Matrix Extender, Matrix Extender, Extender</p>
--	---

References

- [User Manual](#)

This website is an independent publication and is neither affiliated with nor endorsed by any of the trademark owners. The "Bluetooth®" word mark and logos are registered trademarks owned by Bluetooth SIG, Inc. The "Wi-Fi®" word mark and logos are registered trademarks owned by the Wi-Fi Alliance. Any use of these marks on this website does not imply any affiliation with or endorsement.