



# Kimberly-Clark ICON Replace Key Lock with Push Button User Manual

[Home](#) » [Kimberly-Clark](#) » Kimberly-Clark ICON Replace Key Lock with Push Button User Manual 

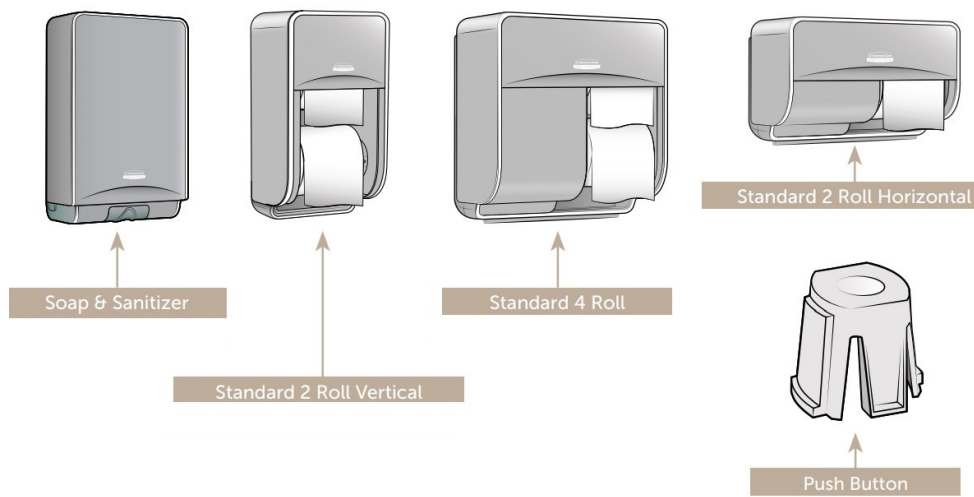
## Kimberly-Clark ICON Replace Key Lock with Push Button User Manual



### Contents

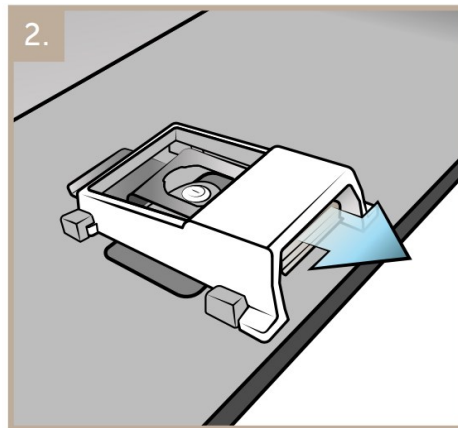
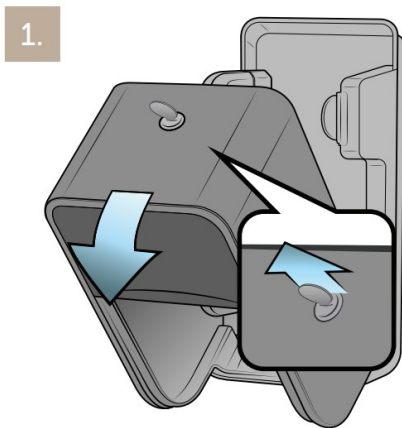
- [1 Instructions](#)
- [2 Lock & Key Removal](#)
- [3 Install Push Button](#)
- [4 Documents / Resources](#)
- [5 Related Posts](#)

### Instructions

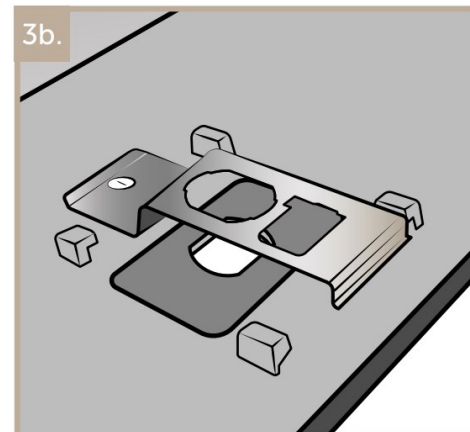
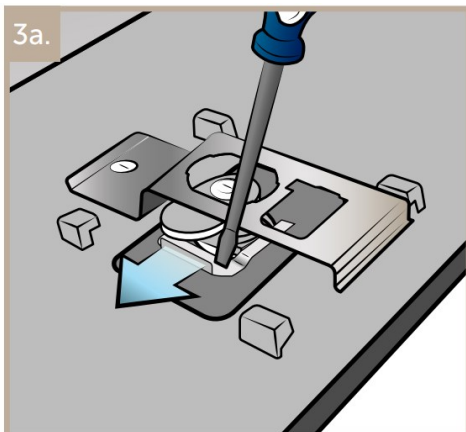


## Lock & Key Removal

1. Open the dispenser cover. Make sure to return the key to the horizontal locked position before removing the lock assembly.
2. If present, remove lock cover piece.

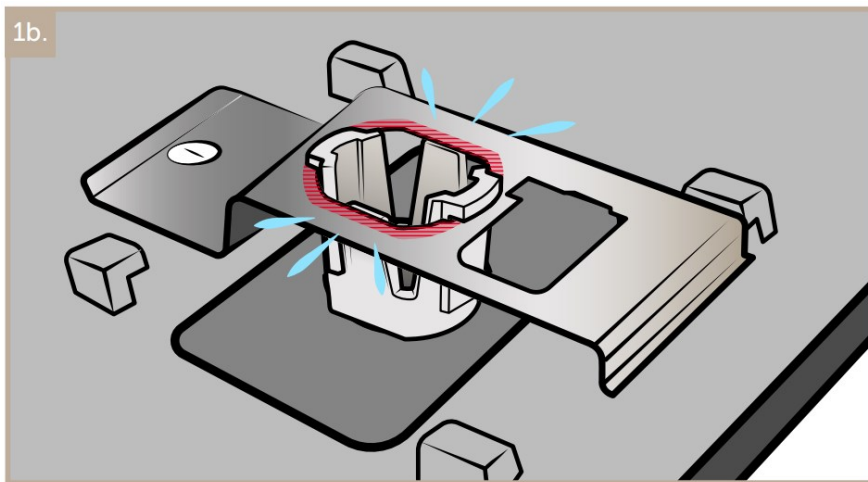
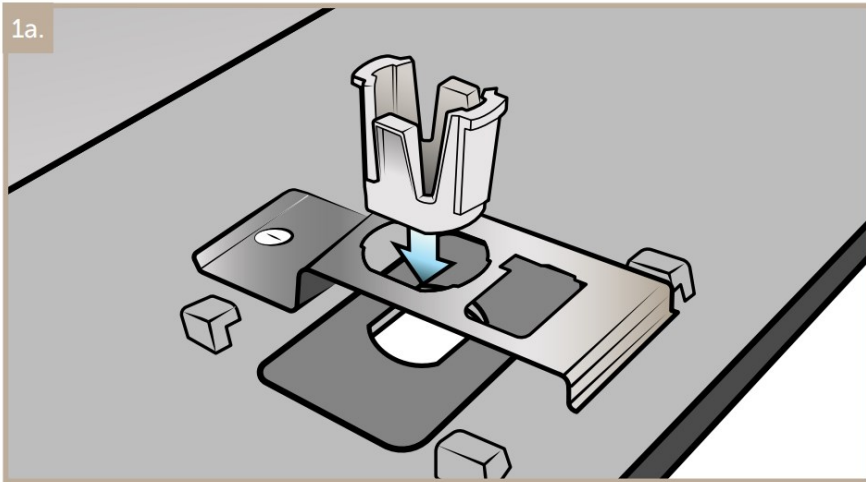


3. Support lock assembly from underneath with hand. Use a flathead screwdriver to remove retaining clip. Lock may fall into hand.

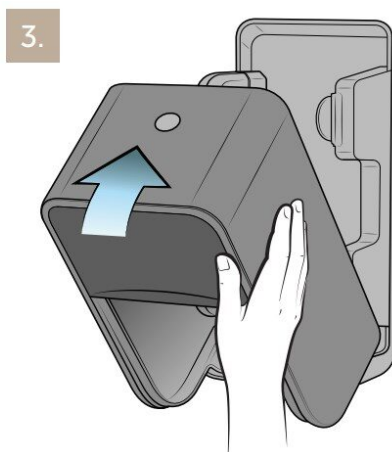
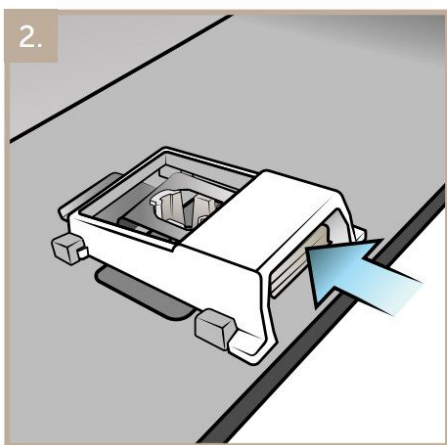


## Install Push Button

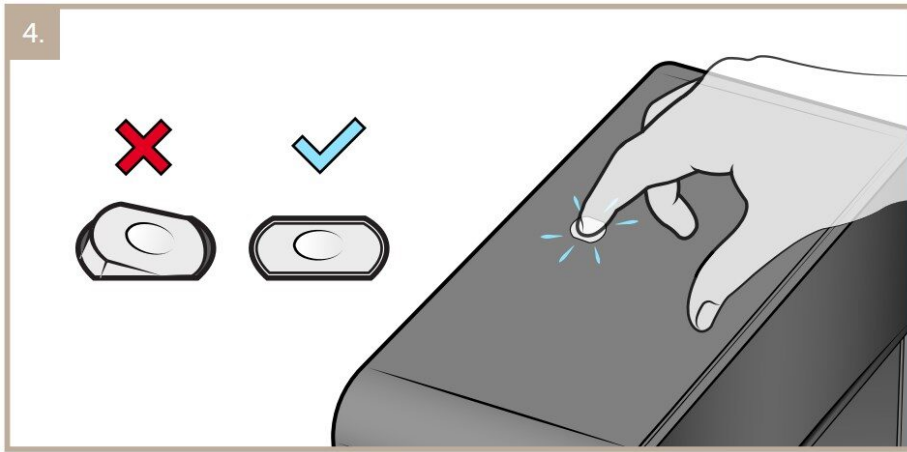
1. Insert push button until lowest 2 side tabs fully engage. You should hear a click to signify correct action.  
**Important!** 2 tabs should be underneath the leaf spring and 2 tabs should be above for button to function properly.



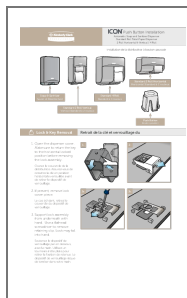
2. Slide lock cover back into place if removed.
3. Close dispenser cover and make sure it securely closes.



4. Ensure push button is flush with the top of the dispenser. Test the button a few times to ensure proper function.



## Documents / Resources



[Kimberly-Clark ICON Replace Key Lock with Push Button \[pdf\]](#) User Manual  
ICON Replace Key Lock with Push Button, ICON, Replace Key Lock with Push Button, Key Lock with Push Button, Push Button