



Kimberly-Clark 58740 Automatic Roll Towel Replace Key Lock with Push Button Instruction Manual

[Home](#) » [Kimberly-Clark](#) » Kimberly-Clark 58740 Automatic Roll Towel Replace Key Lock with Push Button Instruction Manual 

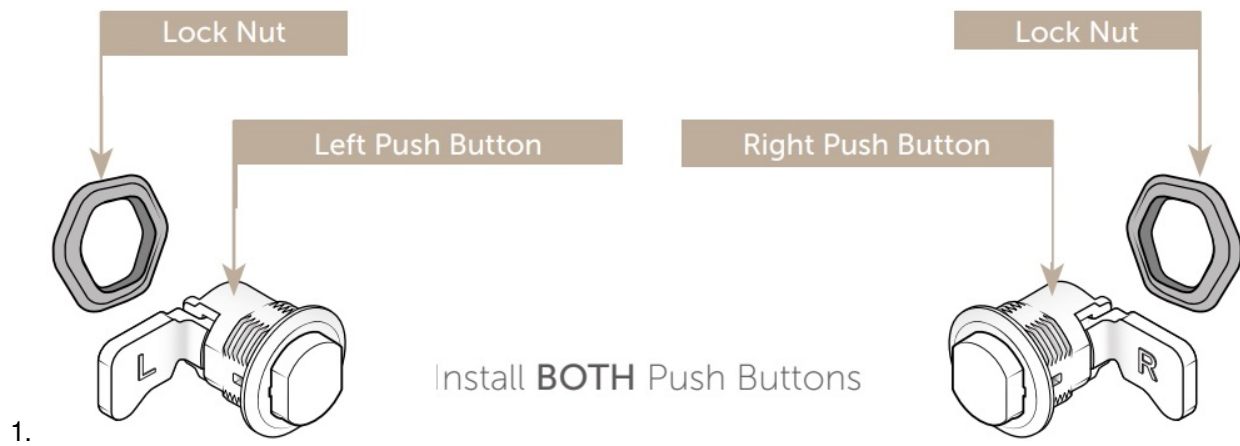
Kimberly-Clark 58740 Automatic Roll Towel Replace Key Lock with Push Button Instruction Manual



Contents

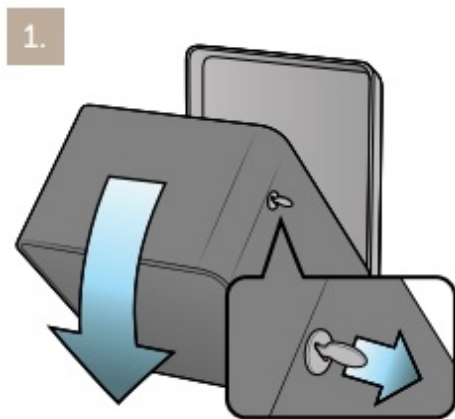
- [1 Assembly](#)
- [2 Lock & Key Replace](#)
- [3 Install Push Buttons](#)
- [4 Documents / Resources](#)
- [5 Related Posts](#)

Assembly

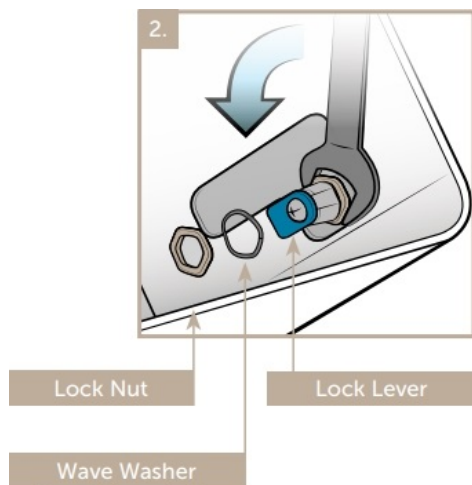


Lock & Key Replace

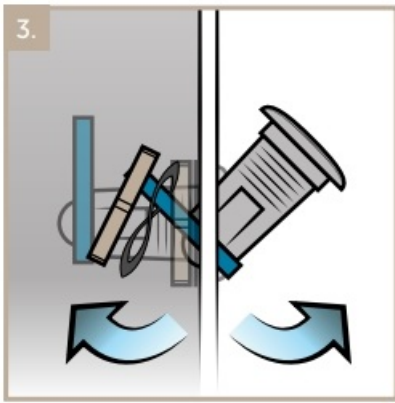
1. Open the dispenser cover. Make sure to return the key to the vertical locked position before removing the lock assembly



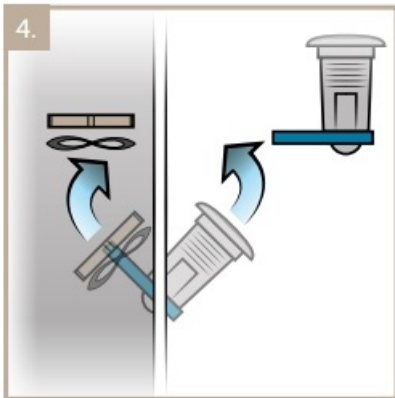
2. . Loosen the lock nut by unscrewing it with a wrench.



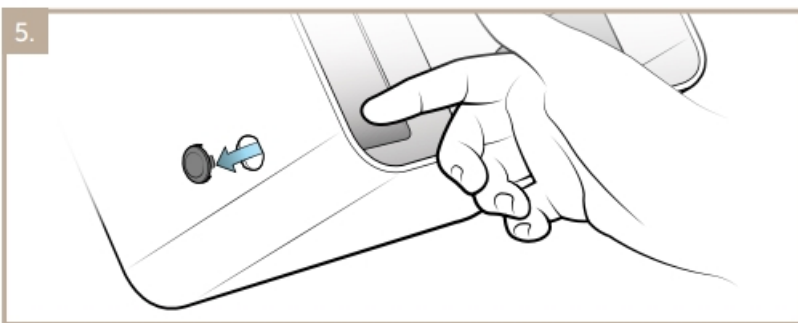
3. Maneuver the lock nut around the lock lever by pulling the entire lock assembly out and pivoting to work it through the hole.



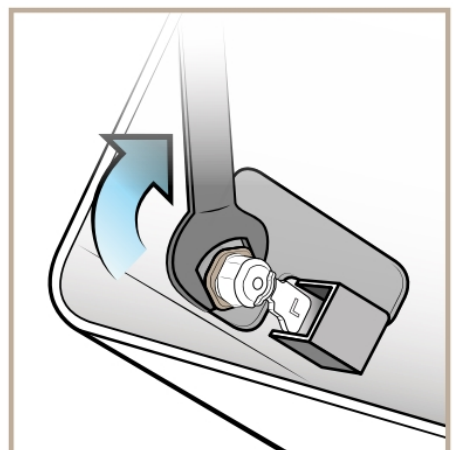
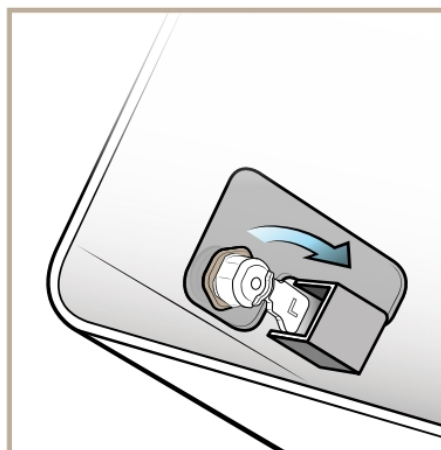
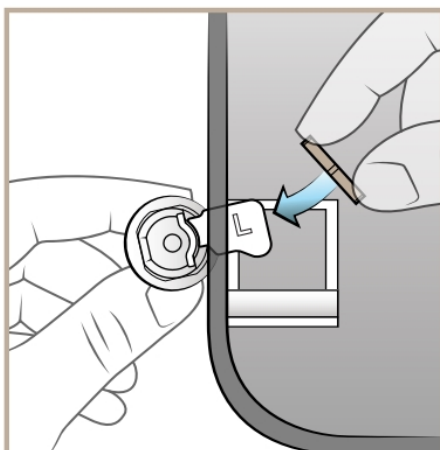
4. Remove the lock nut and wave washer, then remove the remaining lock assembly by maneuvering it through the hole.



5. Remove the grommet in the opposite lock hole by pushing it out from the inside of the cover



Install Push Buttons



1. Insert the Left Push Button tab through the cover opening, and thread Lock Nut over tab

2. Position tab into the pocket of the locking latch.

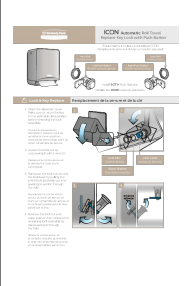
3. . Tighten Lock Nut.

Note: Wave washer is not used with the push button.

4. Install the Right Push Button tab following the same instructions as above

Note: The lock tab should always be facing away from you. When installed properly, it will sit in the pocket of the cover latch shown above. This is critical for the lock and key to function properly.

Documents / Resources

	<p>Kimberly-Clark 58740 Automatic Roll Towel Replace Key Lock with Push Button [pdf] Instruction Manual</p> <p>58740 Automatic Roll Towel Replace Key Lock with Push Button, 58740, Automatic Roll Towel Replace Key Lock with Push Button, Roll Towel Replace Key Lock, Towel Replace Key Lock, Replace Key Lock, Key Lock, Lock</p>
---	---