

Kikkaboo THEA 2 in 1 Set Stroller



Kikkaboo THEA 2 in 1 Set Stroller User Manual

[Home](#) » [kikkaboo](#) » Kikkaboo THEA 2 in 1 Set Stroller User Manual 

Contents

- 1 Kikkaboo THEA 2 in 1 Set Stroller
- 2 Product Information
- 3 INSTRUCTIONS FOR USE
- 4 ACCESSORIES INCLUDED
- 5 CARE AND MAINTENANCE
- 6 Documents / Resources
 - 6.1 References
- 7 Related Posts



Kikkaboo THEA 2 in 1 Set Stroller



Product Information

Specifications

- Suitable for children from birth to a weight of up to 22kg or 4 years
- Complies with EN 1888-1:2018+A1:2022; EN 1888-2:2018+A1:2022; EN 1466:2014 standards

Stroller Frame Parts

1. Handle grip
2. Adjustable handle button
3. Folding lever
4. Handle tube
5. Main connector
6. Auto lock
7. Brake and release pedal
8. Rear wheel
9. Wheel cap
10. Rear leg tube
11. Front leg tube
12. Front-wheel quick-release button
13. Front-wheel
14. Directional lock
15. Front-wheel socket
16. Rear wheel quick
17. Stabilizing tube
18. Brake line tube

Seat Unit Parts

1. Seat unit upper
2. Canopy holder
3. Connectors of the seat unit
4. Safety bar button
5. Seat unit release catch
6. Seat unit base
7. Seat unit bottom
8. Safety front bar
9. Canopy frame
10. Footrest adjustment buttons
11. Backrest adjustment lever
12. Backrest adjustable belt
13. Backrest lever
14. Backrest regulating part

Unfolding Instructions

1. The stroller is in a folded state.
2. Release the folding hook as shown in the picture.
3. Hold the handles and lift upwards until the chassis is fully expanded.
4. The stroller is now ready for use.

FAQ (Frequently Asked Questions)

Q: Can I use an additional mattress or cushion in the stroller?

- **A:** No, it is not recommended to use an additional mattress or cushion in the stroller.
- The stroller is designed to provide a comfortable and safe sleeping environment for your child without the need for additional accessories.

Q: Can I use the car seat as a replacement for a cot or a bed?

- **A:** No, the car seat is not meant to replace a cot or a bed. It is designed for use in the car to ensure the safety of your child during travel.
- If your child needs to sleep, it is recommended to place them in a suitable sleeping environment, such as a cot or a bed, as advised by the manufacturer or distributor, to avoid the risk of suffocation.

Q: Can I hang bags on the stroller?

- **A:** It is not recommended to hang additional bags on the stroller. The stroller has a maximum weight capacity and adding additional bags may exceed this limit, compromising the stability and safety of the stroller.

- Please refer to the product manual for the recommended weight limit and usage guidelines.

INSTRUCTIONS FOR USE

IMPORTANT-READ CAREFULLY AND KEEP FOR FUTURE REFERENCE

- **WARNING** Never leave the child unattended.
- **WARNING** This product is suitable from birth to weight of the child up to 22 kg or 4 years, whichever comes first.
- **WARNING** Ensure that all the locking devices are engaged before use.
- **WARNING** To avoid injury ensure that the child is kept away when unfolding and folding this product.



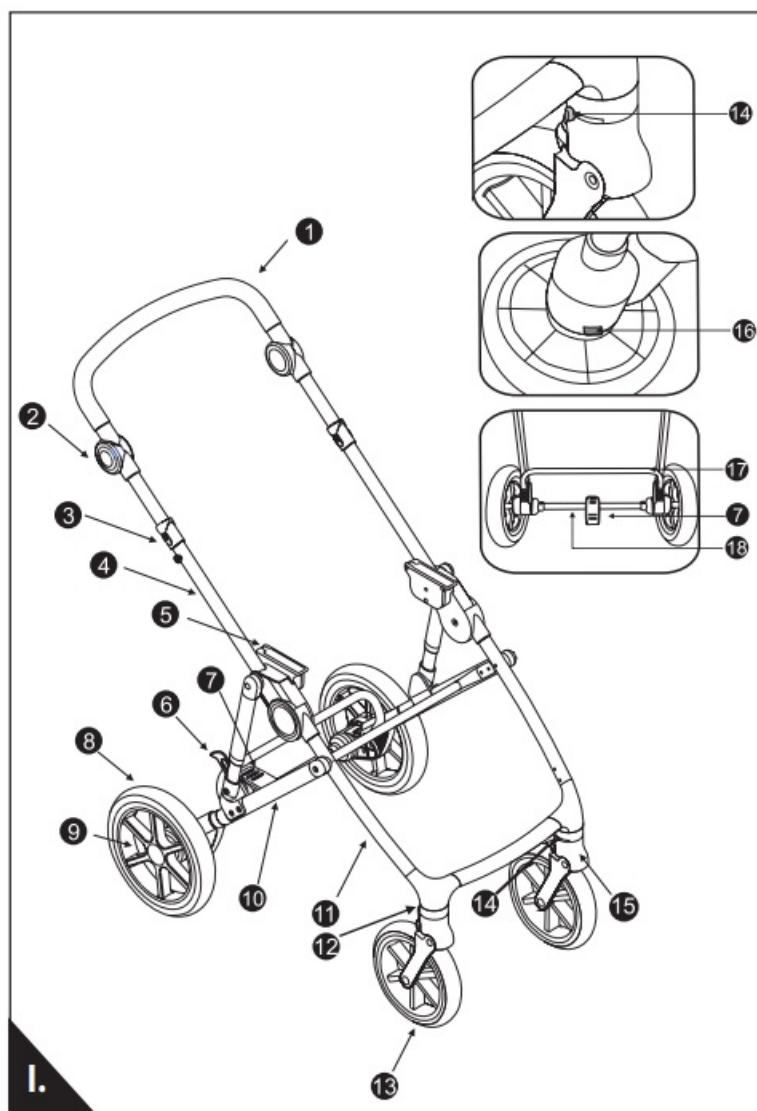
- **WARNING** Do not let the child play with this product.
- **WARNING** Use a harness as soon as the child can sit unaided.
- **WARNING** Always use the restraint system.
- **WARNING** Check that the pram body seat unit or car seat attachment devices are correctly engaged before use.
- **WARNING** This product is not suitable for running or skating.
- **WARNING** This product is designed to be used from the baby's birth. You shall use the most reclined position for newborn babies.
- The newborn child is not able to sit and hold his /her head up unassisted.
- Therefore do not fix the backrest in a sitting position for children under 6 months.
- **WARNING** No additional mattress/ cushion shall be added.
- **WARNING** When using the car seat: the car seats are not meant to replace a cot or a bed. If your child needs to sleep, you need to place them in a suitable pram body, cot, or bed.
- **WARNING** Only spare parts delivered or recommended by the manufacturer/ distributor can be used.
- **WARNING** Keep all plastic packages away from children to avoid the risk of suffocation.
- Parking devices shall be engaged when placing and removing the children.
- The shopping basket can take a maximum load of 2 kg.
- Any load attached to the handle and/or on the back of the backrest and/or the sides of the vehicle will affect the stability of the vehicle. Maximum load of the accessory bag 1 kg. Do not hang any additional bags.
- Regularly check for loose parts. Make routine inspections, and regularly maintain, clean, and/ or wash the vehicle.
- The vehicle shall be used only for one child.
- Accessories which are not approved by the manufacturer shall not be used.
- Make sure that the safety belts are placed properly.
- Only spare parts delivered or recommended by the manufacturer/ distributor shall be used.

SAFETY INSTRUCTIONS WHEN USING THE CARRYCOT WITH THE STROLLER

- **WARNING:** This product is only suitable for a child who cannot sit up unaided.

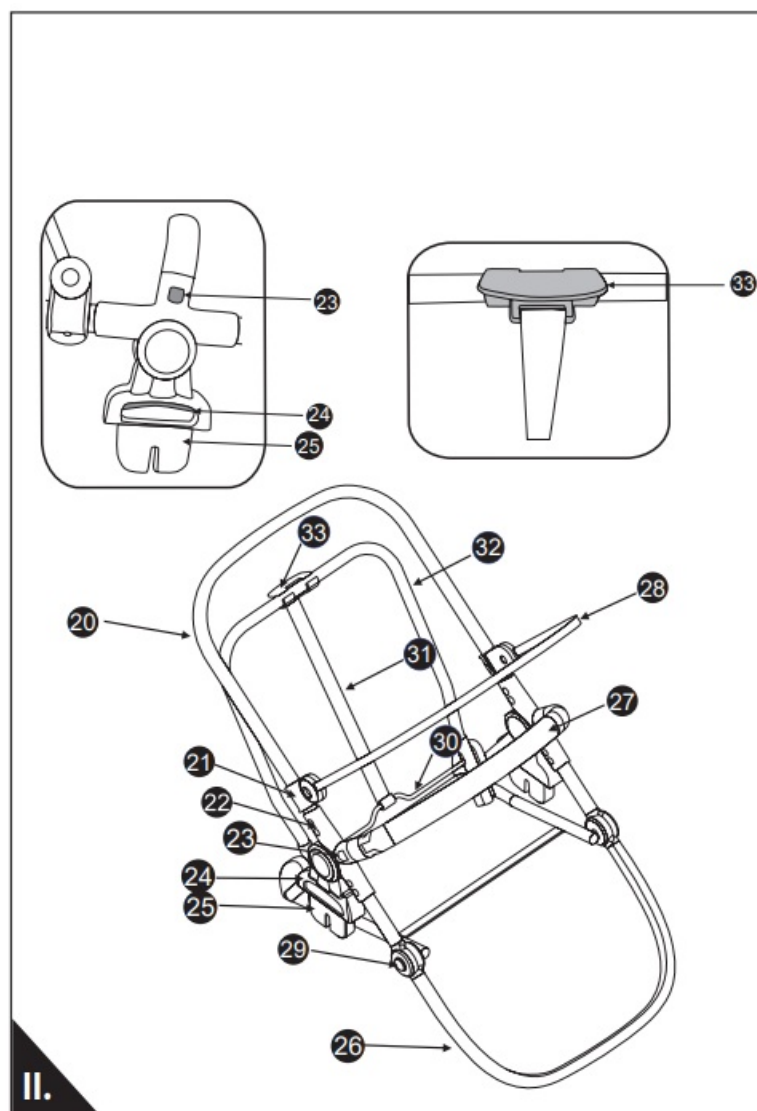
- **WARNING:** Only use on a firm, horizontal level and dry surface.
- **WARNING:** Do not let other children play unattended near the carrycot.
- **WARNING:** Do not use it if any part of the carrycot is broken, torn, or missing.
- **WARNING:** Do not leave flexible carrying handles inside the carrycot.
- **WARNING:** KEEP AWAY FROM FIRE!
- **WARNING:** The handles and the bottom of the carrycot should be inspected regularly for signs of damage and wear.
- **WARNING:** Make sure that the head of the child in the carrycot should never be lower than the body of the child.
- **WARNING:** Do not add another mattress on top of the mattress provided or recommended by the manufacturers.
- **WARNING:** This carrycot is intended for a child who cannot sit up unassisted, turn over, or get up on their hand and knees.
- **Maximum weight of the child:** 9 kg.
- **WARNING:** Never use this product on a stand.
- Use only replacement parts supplied or approved by the manufacturer;
- Do not place the carry cot near an open fire or other source of strong heat;
- The handles and the bottom of the carrycot should be inspected regularly for signs of damage and wear;
- Before carrying or lifting, make sure that the handle(s) is (are) in the correct position of use;
- Before carrying or lifting the base shall be adjusted in the lowest position;
- Produced for Kika Group Ltd., Vasil Levski 121, Plovdiv, Bulgaria. Made in China.
- This product complies with EN 1888-1:2018+A1:2022; EN 1888-2:2018+A1:2022; EN 1466:2014

STROLLER FRAME PARTS (See Fig. I.)



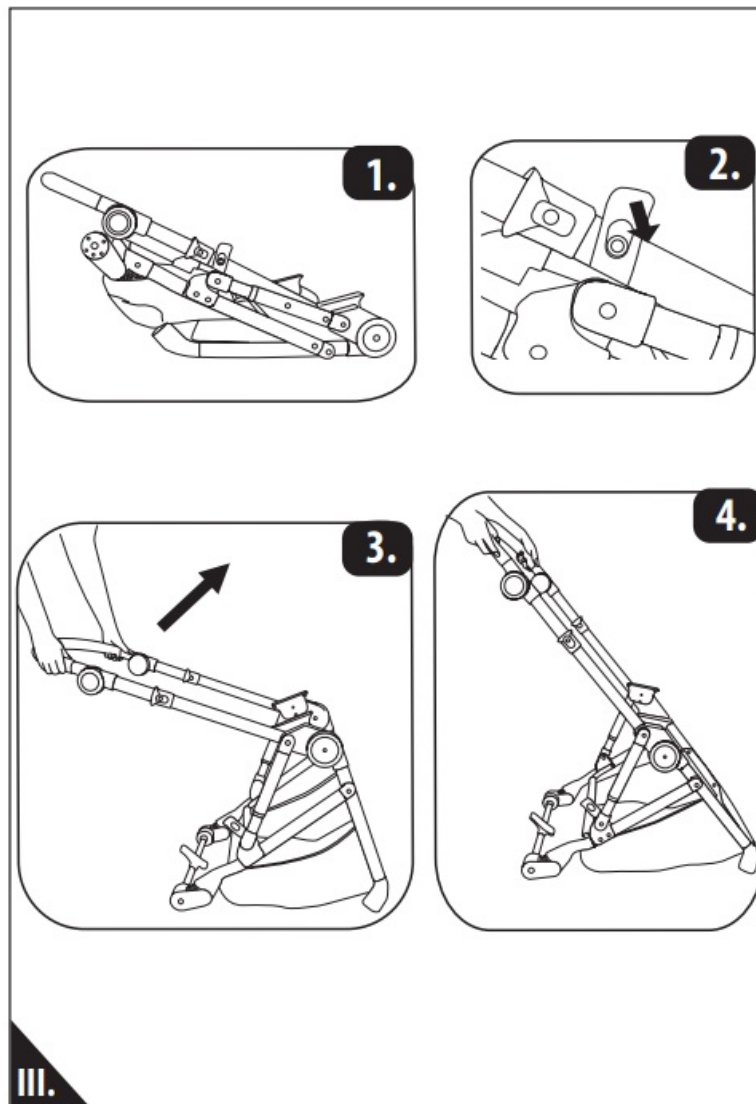
1. Handle grip;
2. Adjustable handle button;
3. Folding lever;
4. Handle tube;
5. Main connector;
6. Auto lock;
7. Brake and release pedal;
8. Rear wheel;
9. Wheel cap;
10. Rear leg tube;
11. Front leg tube;
12. Front-wheel quick-release button;
13. Front-wheel;
14. Directional lock;
15. Front-wheel socket;
16. Rear wheel quick;
17. Stabilizing tube;
18. Brake line tube

• **SEAT UNIT PARTS (See Fig. II.)**



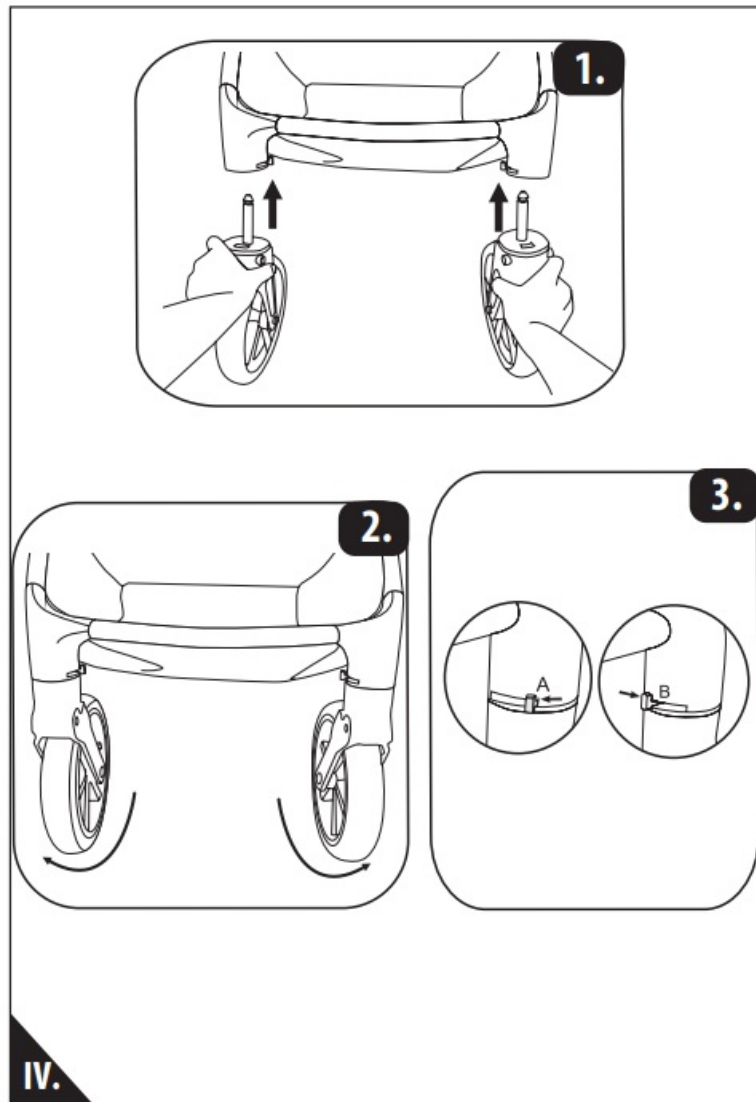
- 19. Seat unit upper;
- 20. Canopy holder;
- 21. Connectors of seat unit;
- 22. Safety bar button;
- 23. Seat unit release catch;
- 24. Seat unit base;
- 25. Seat unit bottom;
- 26. Safety front bar;
- 27. Canopy frame;
- 28. Footrest adjustment buttons;
- 29. Backrest adjustment lever;
- 30. Backrest adjustable belt;
- 31. Backrest lever;
- 32. Backrest regulating part;

UNFOLDING (See Fig. III.)



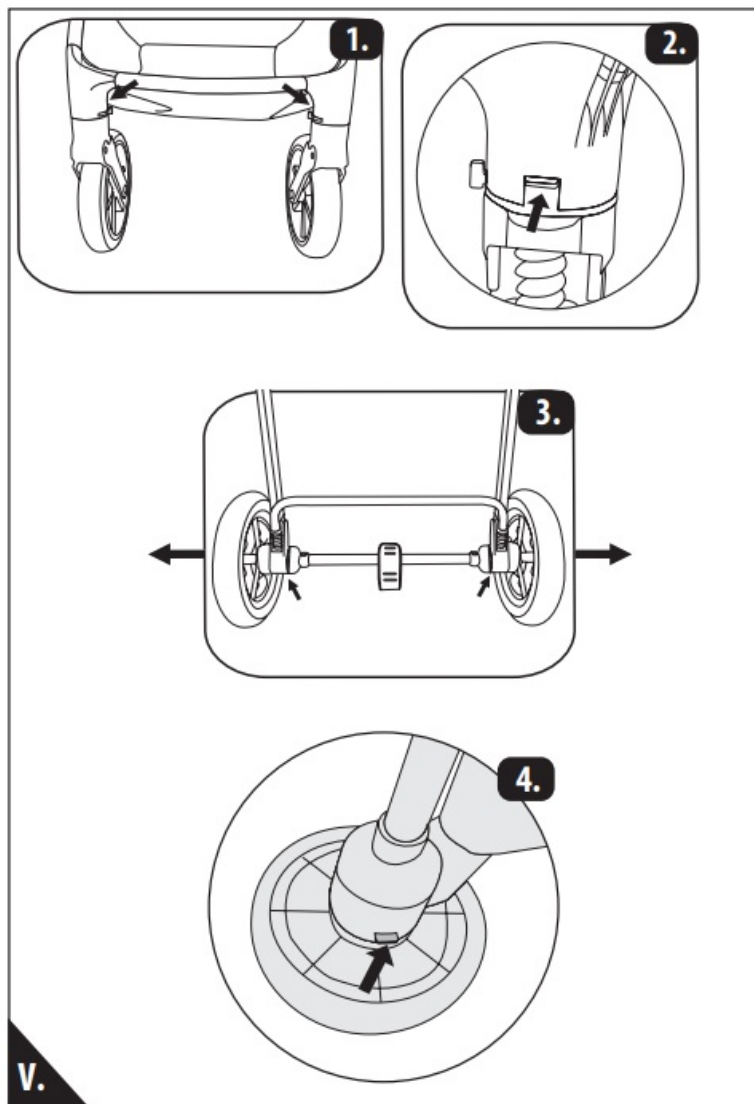
1. The status when it's folded.
2. Release the folding hook as the picture shows.
3. Hold the handles and lift upwards until the chassis is fully expanded.
4. The stroller is now unfolded.

FRONT WHEEL ASSEMBLY (See Fig. IV.)



- To prevent the front wheels from swiveling, push the swivel locks backward (A).
- To allow the wheels to swivel again pull the locks forward (B).
- **FRONT WHEEL RELEASE** (See Fig. V.) If you press the quick-release button on both sides of the front wheels, it can automatically remove the wheel.

REAR WHEEL RELEASE (See Fig. V.)

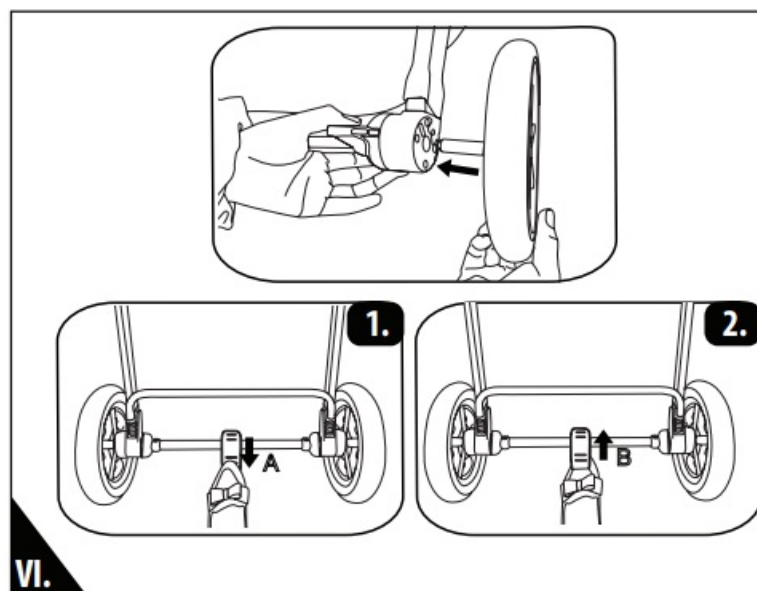


- Press the rear wheel quick-release button to unlock the rear wheels(as the pictures show).

REAR WHEEL ASSEMBLY (See Fig. V.)

1. Insert the rear aide into the hole, until you hear a dick sound. Ensure that it is engaged before use.

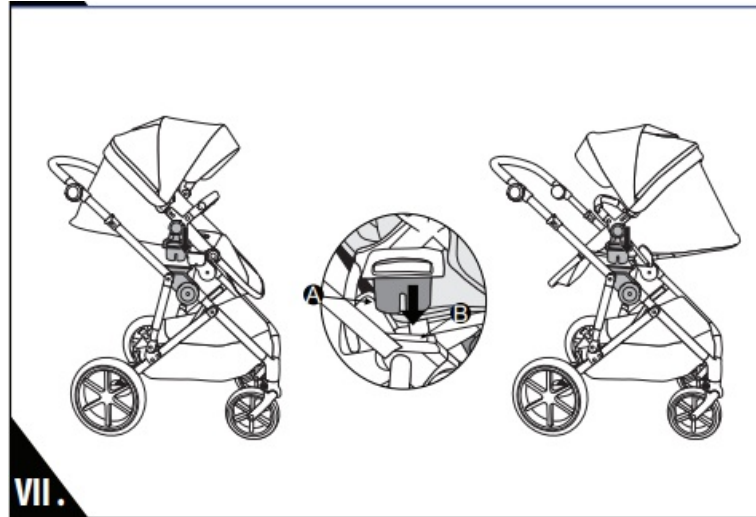
• USE OF BREAKS (See Fig. VI.)



2. Step down the brake pedal until you hear a click sound to engage the brake mechanism (A).

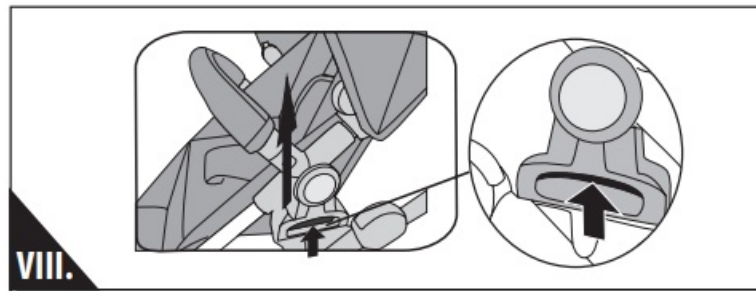
3. Step up the brake pedal to unlock the brakes(B).

SEAT INSTALLATION (See Fig. VII.)



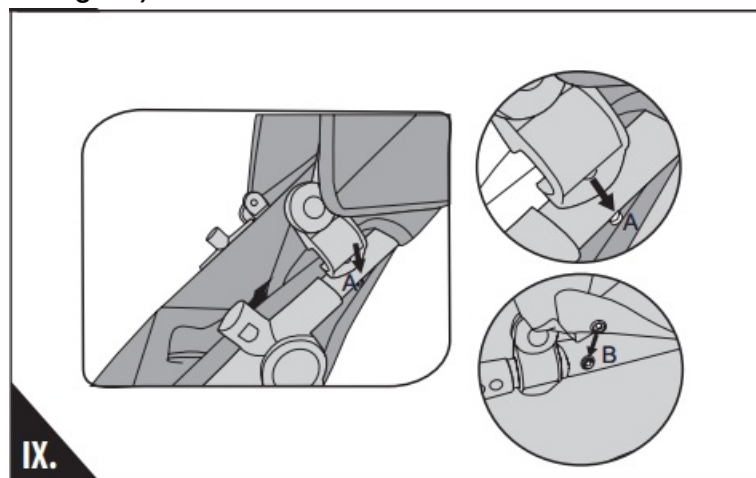
- Match the connector (A) of both sides of the seat unit into the base (B) on the stroller until you hear a click sound to make sure it is installed correctly.
- **Important:** The seat unit can be forward or parent-facing.

SEAT RELEASE (See Fig. VIII.)



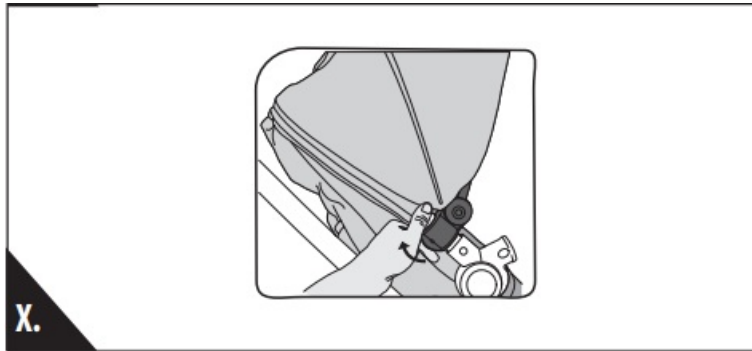
- Press the release buttons on each side of the seat unit, and lift the seat unit off the chassis.

CANOPY ASSEMBLY(See Fig. IX.)



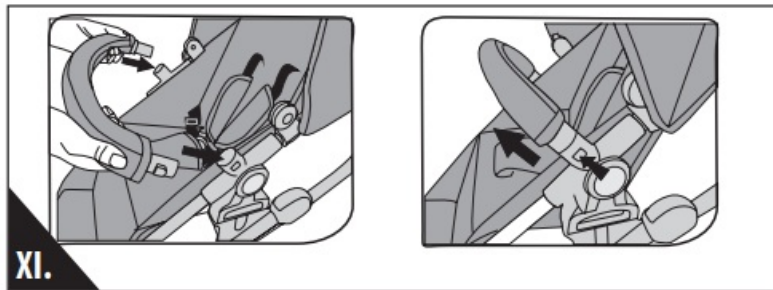
- The canopy attaches to the seat unit where the metal studs (A) are located. Hook the dips over the top of the tubing then push the bottom of the clips on and over the metal studs, then connect and fix the metal press button (B) on both the canopy and seat unit.

CANOPY DISASSEMBLY (See Fig. X.)



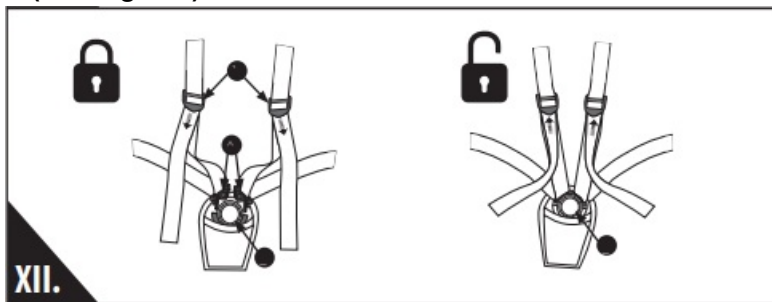
- Release the metal press studs connected to the canopy and seat unit, then pull the canopy dips outwards to remove the dips of the tube.

USE OF BUMPER/ SAFETY BAR (See Fig. XI.)



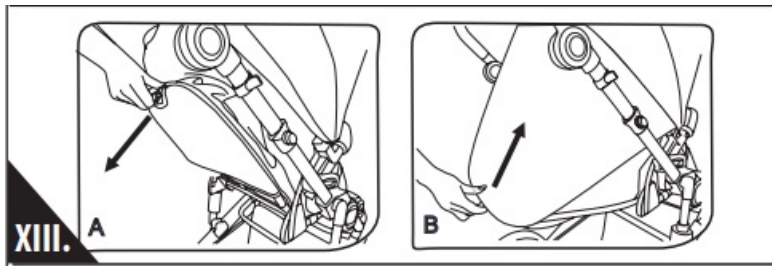
- **Install:** Hold the bumper bar, slide the bumper tips into the connection points until you hear dicking sound. Releasing the bumper bar. Push two buttons on each side of the bumper bar while pulling it out.
- Push the button on either side of the bumper bar whilst pulling on the bar.

USE OF SAFETY BELTS (See Fig. XII.)



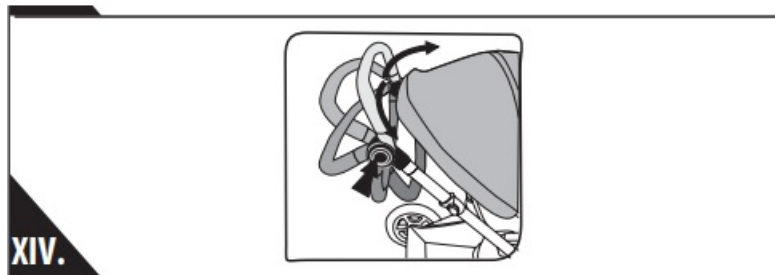
- Lock the safe belt and insert the safety plug (A) into the safety socket (B) until it clicks into place. Adjust the ladder Budde (C) on the shoulder belt to make the harness fit snugly.
- **WARNING!:** Ensure the harness is correctly fitted at all times. Release the seat belt: hold and press the top and bottom safety buckle seats (B) with your thumb and index finger. The harness fit can be adjusted using the ladder buckle on the shoulder belt.

BACKREST ADJUSTMENT(See Fig. XIII.)



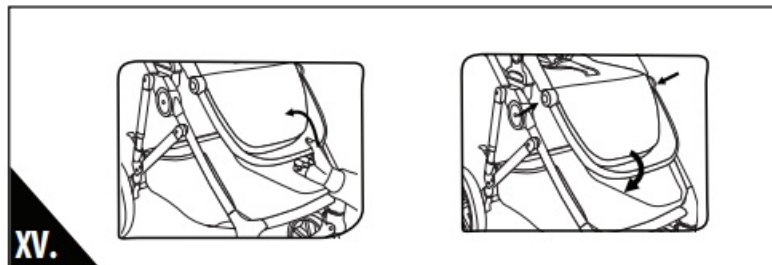
1. Hold the heating part on the backrest, and pull it down to make the backrest down. (A)
2. Pull up the regulating part to make the backrest up.(B)

ADJUST THE HANDLE(See Fig. XIV.)



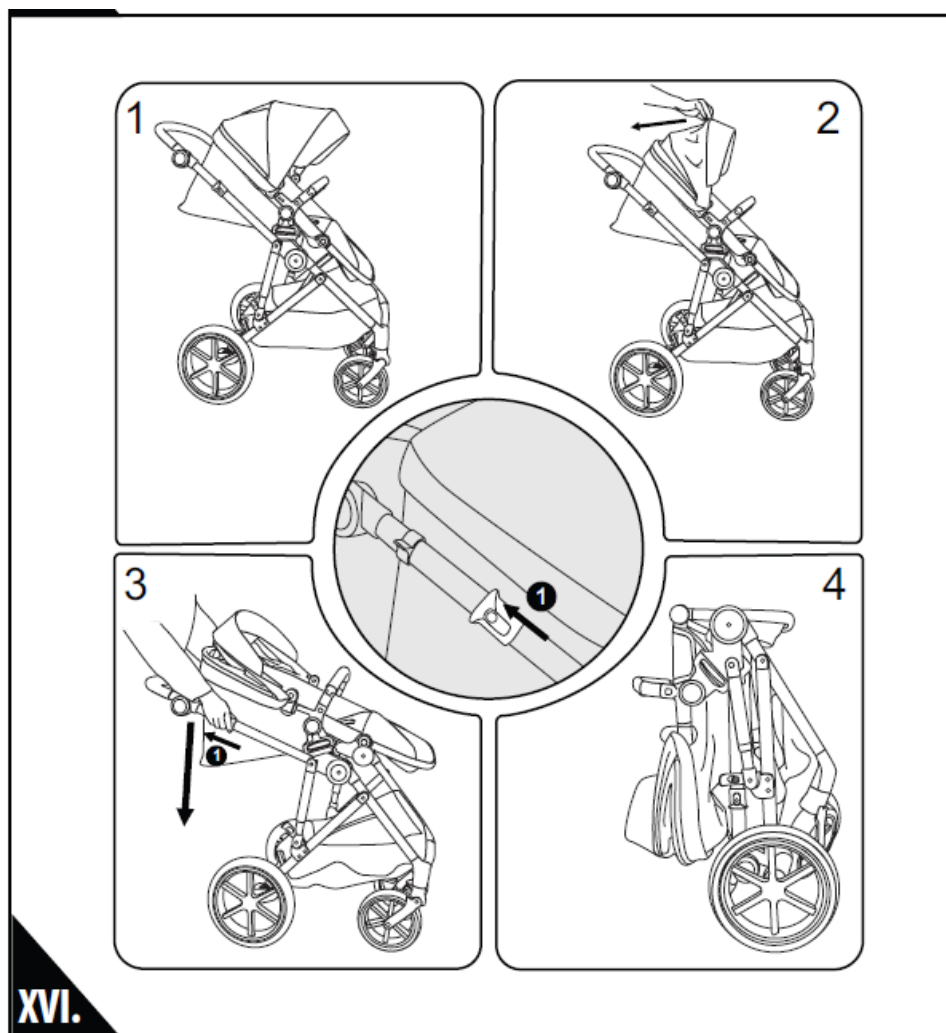
- Press the button on both sides at the same time to adjust the handle. There are seven different height adjustments.

LEG REST ADJUSTMENT (See Fig. XV.)



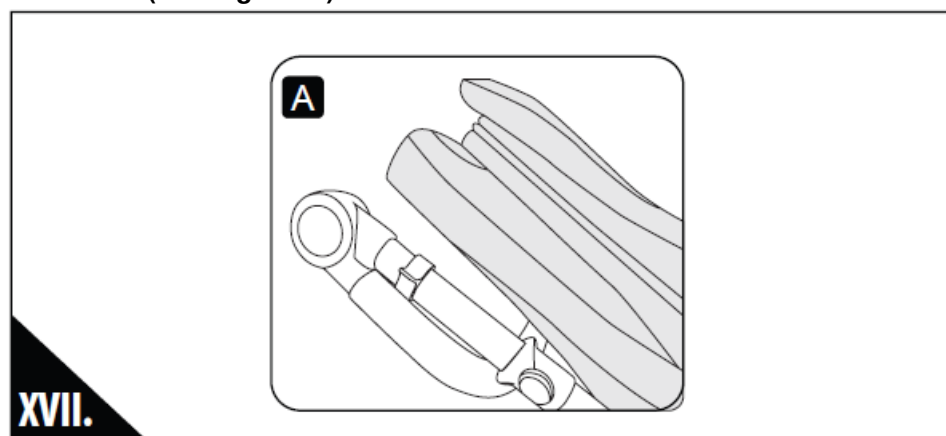
1. Adjust the leg rest by pushing it up.
2. Pressing the adjustable button on both sides at the same time to push it down.

FOLDING (See Fig. XVI.)



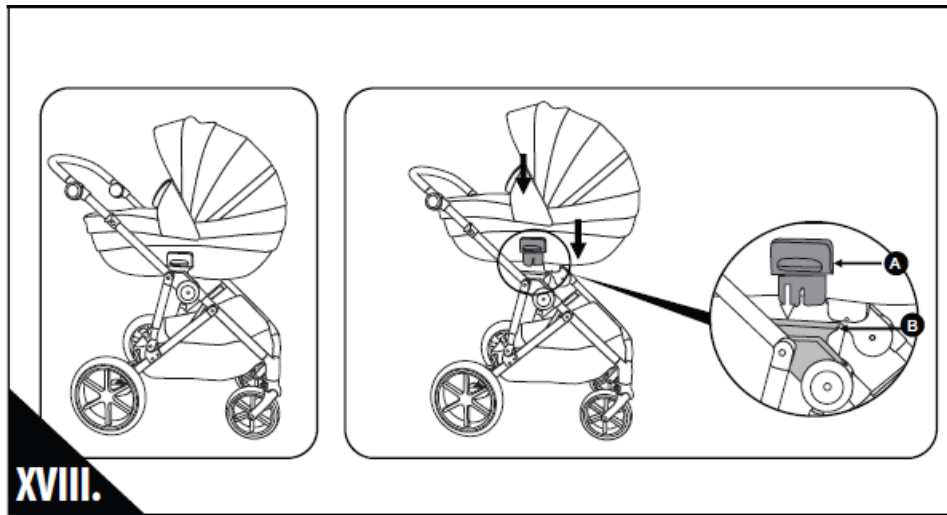
1. Make sure that the seat unit is forward-facing (opposite to Manna) before folding.
 2. Fold the canopy.
 3. Hold and pull up the release button 0 on both the right and left sides, and push the handle downward until the stroller is folded down.
- Ensure the folding lock is secured.
 - **WARNING!** To avoid injury ensure that your child is kept away when unfolding and folding this stroller.

STROLLER COMPACTING (See Fig. XVII.)

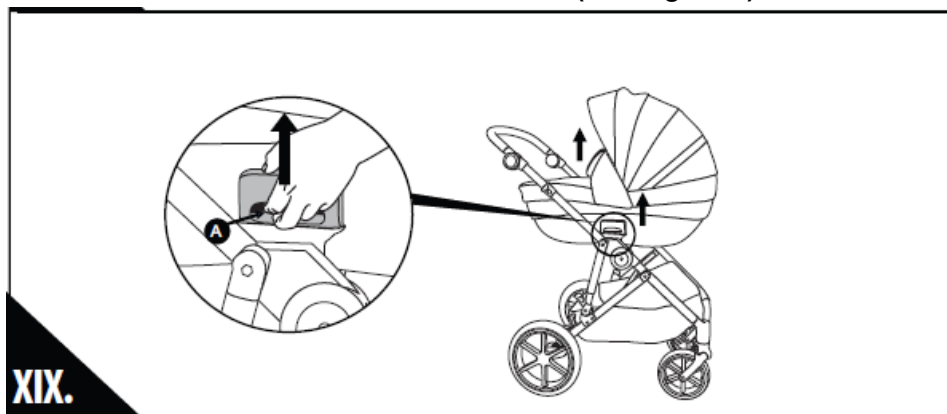


- To minimize the volume of the folded stroller, make the adjustable handle into the smallest section before folding. (See A).

USE THE CARRYCOT WITH THE STROLLER (See Fig. XVIII.)



ATTACHING THE CARRYCOT TO THE STROLLER CHASSIS (See Fig. XIX.)

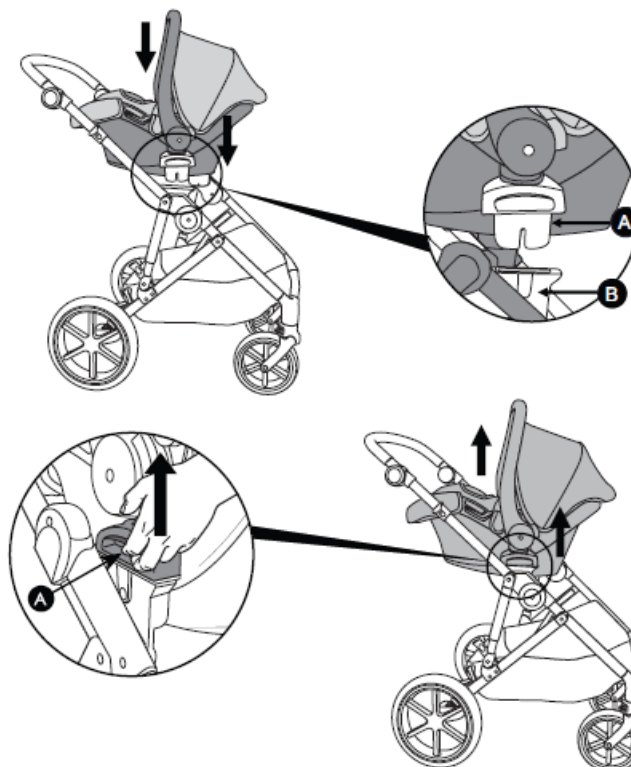


- **Note:** The carrycot can only be fitted parent-facing as shown. Hold the carrycot so that it is facing the stroller handle. Position the carrycot joints(A) above the mounting points(B) and push the carrycot downwards until it clicks into place.
- Lift the carrycot to ensure it is firmly attached to the stroller chassis.
- **REMOVING THE CARRYCOT FROM THE STROLLER CHASSIS** To remove the carrycot, press in the release catches(A) on each side of the carrycot adaptor and lift the carrycot off the chassis.

UNFOLDING/FOLDING/ATTACHING/DETACHING THE CARRYCOT AND USE OF THE CANOPY (See Fig. XX.)



XX.



XXI.

ACCESSORIES INCLUDED

- Footcover for the stroller and mama bag with changing pad.
- Can be combined with i-SIZE car seat: i-Prime.


CARE AND MAINTENANCE

1. To clean the metal parts, wipe with a moist and then dry towel until the stroller is all dry.
2. To clean the plastic parts, use a towel, water, and a soft detergent.
3. To clean the textile parts, use a solution for cleaning tapestries.
4. When not in use, never place other objects in or on the stroller! This will damage it!
5. Always dry and air the stroller if it is not dry enough!
6. Run regular clean-ups over the wheel axes and the plastic elements.
7. Always clean the wheel axes and plastic elements after using the pram over sandy or dusty surfaces!

8. Do not oil the wheel axes or other movable parts of the stroller. They just need to be cleaned.
9. Run regular checks for loose or damaged parts and if there are such, immediately replace them with new ones!

- **Kika Group Ltd.**
 - **Vasil Levski 121**
 - **4000 Plovdiv, Bulgaria**
 - office@kikkaboo.com
 - **+359 32 51 51 51**
 - **KikkaBoo España S.L.**
 - **Pol. ind., Los Álamos s/n, Fase II, Nave 17**
 - **18230 Atarfe (Granada), España**
 - oficina@kikkaboo.com
 - **+34 919 148 299**
 - www.kikkaboo.com
-

Documents / Resources

| | |
|--|--|
|  <p>KikkaBoo THEA 2 in 1 Set Stroller</p> | <p>Kikkaboo THEA 2 in 1 Set Stroller [pdf] User Manual THEA 2 in 1 Set Stroller, THEA, 2 in 1 Set Stroller, Set Stroller, Stroller</p> |
|--|--|

References

- [User Manual](#)

[Manuals+](#). [Privacy Policy](#)

This website is an independent publication and is neither affiliated with nor endorsed by any of the trademark owners. The "Bluetooth®" word mark and logos are registered trademarks owned by Bluetooth SIG, Inc. The "Wi-Fi®" word mark and logos are registered trademarks owned by the Wi-Fi Alliance. Any use of these marks on this website does not imply any affiliation with or endorsement.