



Kikka boo Linit A6 Digital Intercom Baby Digital Monitor Instructions

[Home](#) » [kikka boo](#) » Kikka boo Linit A6 Digital Intercom Baby Digital Monitor Instructions 

Kikka boo Linit A6 Digital Intercom Baby Digital Monitor Instructions



IMPORTANT! KEEP THESE INSTRUCTIONS FOR FUTURE REFERENCE.

Thank you for purchasing our digital baby monitor. Before using this device, read the instructions carefully and keep this manual for future reference.

Contents

[1 PRODUCT FEATURES](#)

[2 SET INCLUDES](#)

[3 BABY UNIT](#)

[4 BABY UNIT LED INDICATOR](#)

[5 PARENT UNIT](#)

[6 PARENT UNIT LED INDICATOR](#)

[7 POWER SUPPLY](#)

[8 PAIRING](#)

[9 Documents / Resources](#)

[10 Related Posts](#)

PRODUCT FEATURES

- 2.4GHz frequency;
- FHSS technology;
- Range outdoors 250-300 m;
- Range indoors 30-50 m;
- Automatic channel selection;
- VOX activation;
- Two-way talk;
- Night light
- ECO mode;
- Out of range alarm;
- Low battery alarm;
- Volume control;
- Rechargeable batteries — 400 mAh;

Set includes: Parent unit, Baby unit Manual, 2 USB cables and 1 USB adapter.

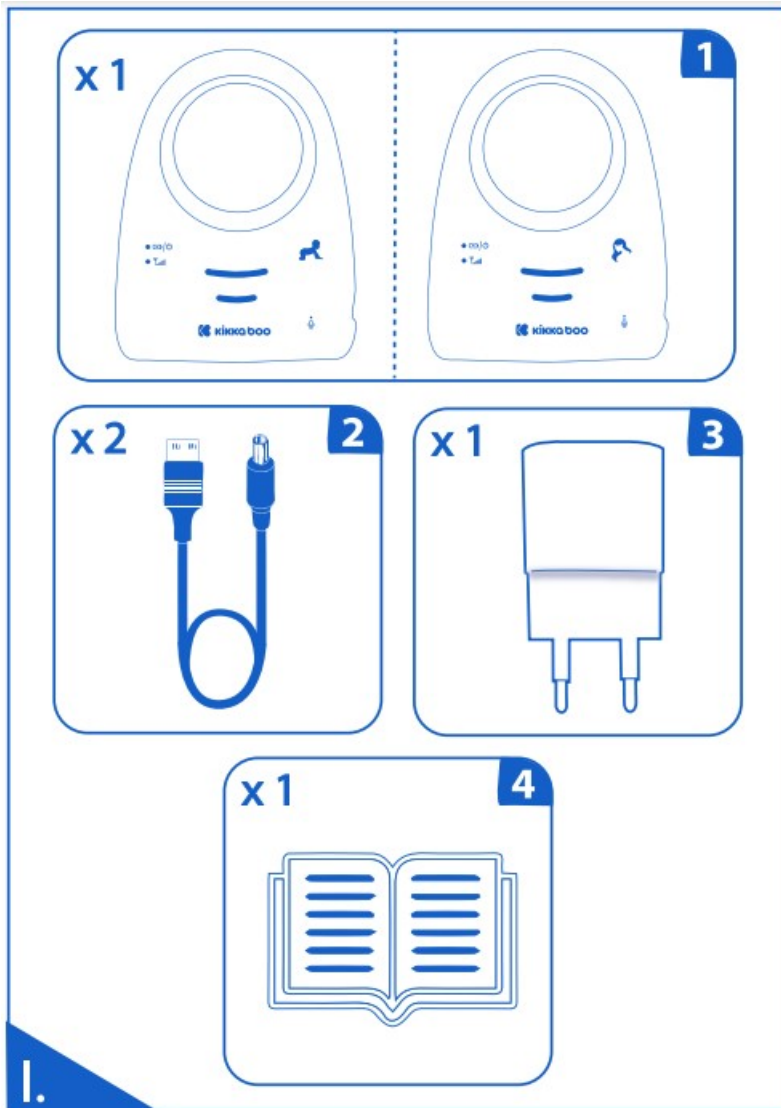
WARNINGS!

The Baby monitor has been designed to help you look after your baby and is not intended as a tool for substituting the adults' supervision & care in any circumstances" Clean each unit with dry cloth only.

- Do not block any ventilation openings.
- Do not install near any heat sources such as radiators, heat registers, stoves, or other devices that produce heat.
- Only use attachments and accessories specified by the manufacturer.- Unplug this device when unused for long periods of time.- Do not touch the plug contacts with sharp or metal objects.- For your safety, please use the provided power adaptors. (The manufacturer will not be responsible to any loss incurred by not using the manufacturer's provided power adaptors).
- To reduce the risk of fire or electric shock, do not expose this baby monitor to rain or moisture.
- Connect the baby monitor to an easily accessible AC outlet. Should you notice an abnormality in the device, disconnect the main plug from the AC outlet immediately.
- DON'T disassemble the casing to avoid the risk of the electric shock.
- DON'T use the damaged power adaptors.

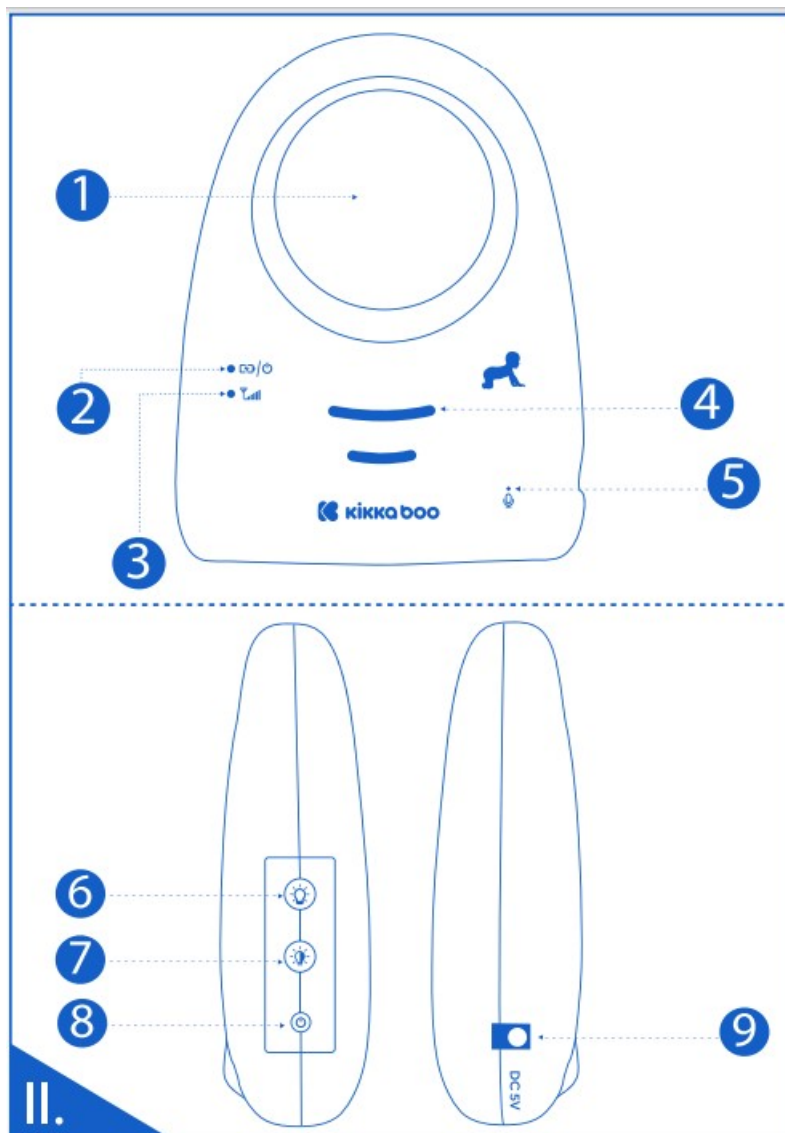
- DON'T interfere the plug of power adaptors with conductors, e.g. with rings.
- Battery may explode if mistreated. A background noise from each unit may indicate that the batteries are exhausting and they need to be recharged. Please check if the Green power LED is flashing. If yes, this device need to be recharged.

SET INCLUDES



1. 1 x Baby unit/1 x Parent unit 2.2 x USB cables; 3. 1 x Adapter; 4. 1 x Manual.

BABY UNIT



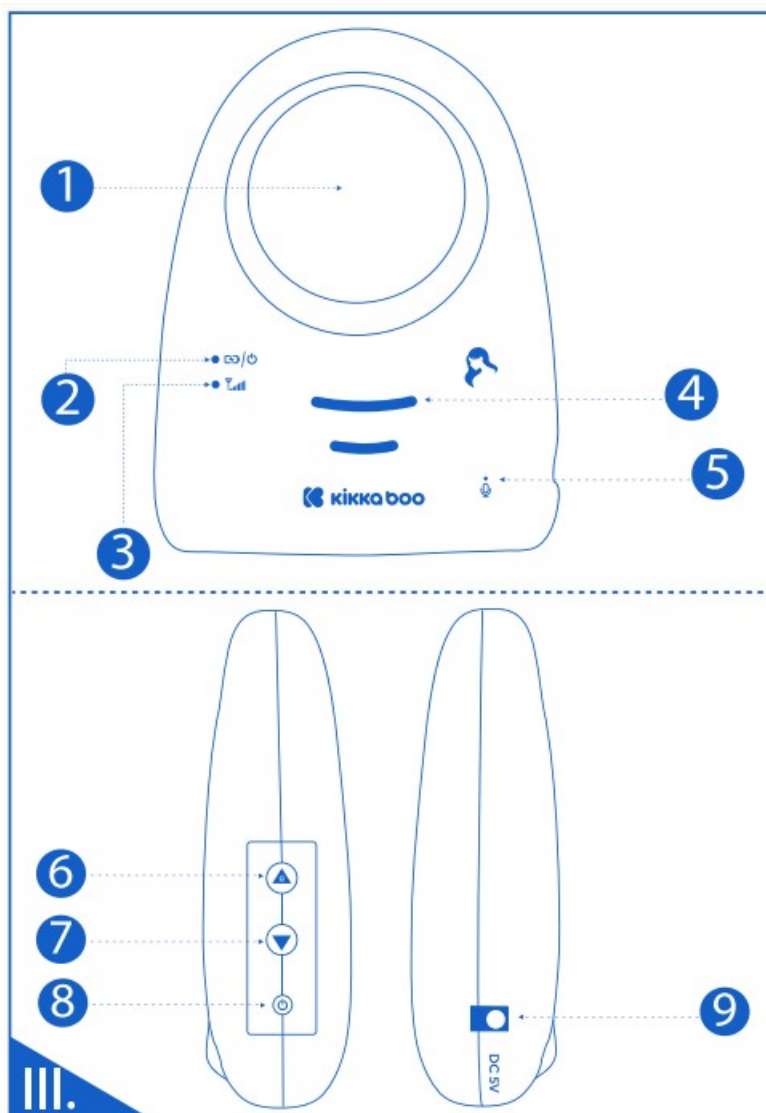
1 . Night Light / Out of range indicating light 2. Power / Charging indication LED; 3. Signal LED; 4. Speaker; 5. Microphone; 6. Normal night light button; 7. Flashing night light button; 8. Power button (Press 2 seconds)/Pairing button (Press 5 seconds); 9. DC 5V jack

BABY UNIT LED INDICATOR

Signal indicating LED (11/3)

- Connected with parent unit – Green light is on
- Pairing – Green light is flashing after pressing the Power button for 5 seconds. Power/charging indicating LED (11/2)
- Power On – Green light on
- Power Off- Green light off
- Low Battery – Green light flashing
- Charging – Red light on
- Charged – Red light off

PARENT UNIT



1. Baby unit voice indicating light / Out of range indicating light
2. Power / Charging indication LED;
3. Signal LED;
4. Speaker;
5. Microphone;
6. Vol + (Volume up button) (Short press)/ Baby unit voice indication triggering button (Long press);
7. Vol -(volume down button) (Short press)/Talk back button (Long press);
8. Power button (Press 2 seconds)/Pairing button (Press 5 seconds);
9. DC 5V jack

PARENT UNIT LED INDICATOR

Signal indicating LED (111/3)

- Connected with baby unit – Green light is on
- Pairing – Green light is flashing after pressing the Power button for 5 seconds. Power/charging indicating LED (111/2)
- Power On – Green light on
- Power Off- Green light off

- Low Battery -Green light flashing
- Charging – Red light on
- Charged – Red light off

POWER SUPPLY

Both units can be operated by built in Lithium battery or DC5V power adaptors.

PAIRING

Both units are paired by default. If you find the baby unit and parent unit losing the connection, you can long press the parent unit power button for 5 seconds until the signal LED starts flashing. Then you can press the baby unit power button for 5 seconds until the signal LED starts flashing. The device will be re-paired.

LOW BATTERY INDICATION: The power LED will keep flashing.

OUT OF RANGE INDICATION: If both units are too far from each other, they cannot work properly.

BABY UNIT: The baby night light will keep slowly flashing when it is out of range.

PARENT UNIT: Indicating white light will start flashing when it is out of range and the unit will emit a “beep beep” alerting sound when it is out of range. In this case, you have to decrease the distance between both units and put them closer to each other.

ECHO NOISE: If both units are too close to each other an acoustic feedback might be heard. In this case, you have to put the two units away from each other, or turn down the volume of the speaker.

VOX: When entering the VOX mode, Parent unit's voice indicating light (The top big circle white light) will turn off until there is a sound at the Baby unit side triggering the device back to working mode.

BABY UNIT VOICE INDICATION: (See scheme on page II. 1): If you long press the Vol + button on the Parent unit, the baby unit voice indication function will be triggered on. Whenever there is a sound from the Baby unit, Parent unit's voice indicating light (The top big circle white light) will flash. The pace of flashing depends on the voice speed from the Baby unit. If the white light flash is speedy, this means the baby crying frequency is very fast. Parent voice indication in baby unit is with White flashing light. Out of range alarm is with same light indication (White flashing light) but with “beep beep” sound too.

This product applies with: EN 62368, EN 62479, EN 301 489

KIKKA BOO Bulgaria
Vasil Levski 121
Plovdiv, Bulgaria
office@kikkaboo.com



Kikkaboo (Bulgaria)



kikkabooworld

KIKKA BOO Spain
Calle Sos Del Rey Catolico, 16, 7C

Granada, Spain
office@kikkaboo.com



Kikkaboo Spain



kikkaboospain

www.kikkaboo.com

Documents / Resources

	<p>Kikka boo Linit A6 Digital Intercom Baby Digital Monitor [pdf] Instructions</p> <p>Linit A6 Digital Intercom Baby Digital Monitor, Linit A6, Digital Intercom Baby Digital Monitor, Intercom Baby Digital Monitor, Baby Digital Monitor, Digital Monitor, Monitor</p>
---	--

[Manuals+.](#)