

Kielder PRO Foam Insert Cutting User Guide



Contents

[1 PRO Foam Insert Cutting](#)

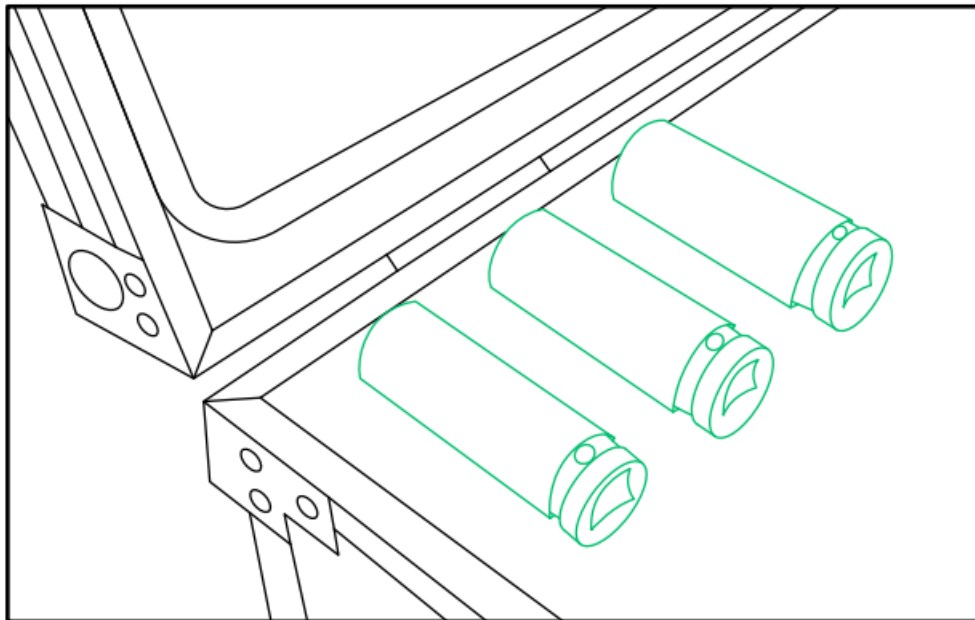
[2 Documents / Resources](#)

PRO Foam Insert Cutting

Step 1: Preparation

Before you do any cutting, firstly position your items in the desired layout on the foam. Please ensure you leave at least 10mm spacing.

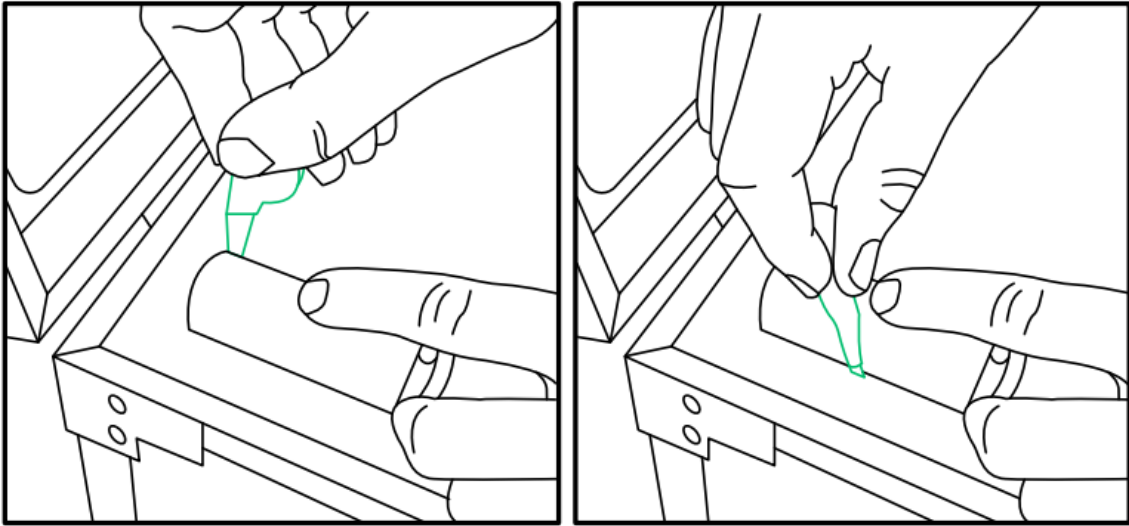
Once you are satisfied with the layout and spacing, it is advisable to take a photo for reference.



Step 2: Outline cut

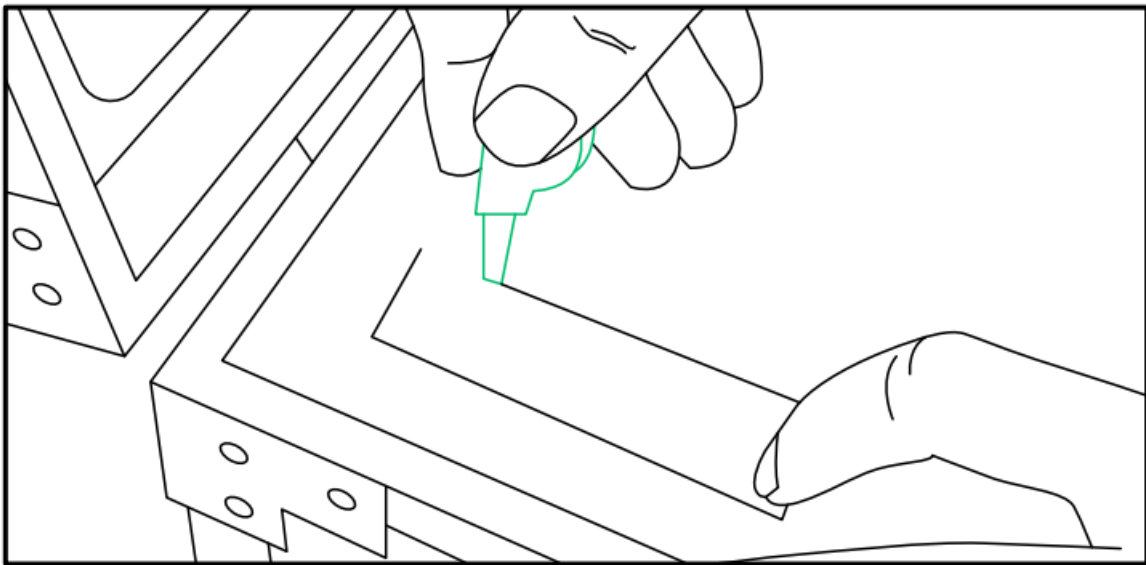
Now pick a start point, using just one item.

Remove all other tools and accessories from the foam. Softly press the item into the foam and, with the blade in an upright position, cut lightly around it – for best results, cut neatly and as close to the item as possible.



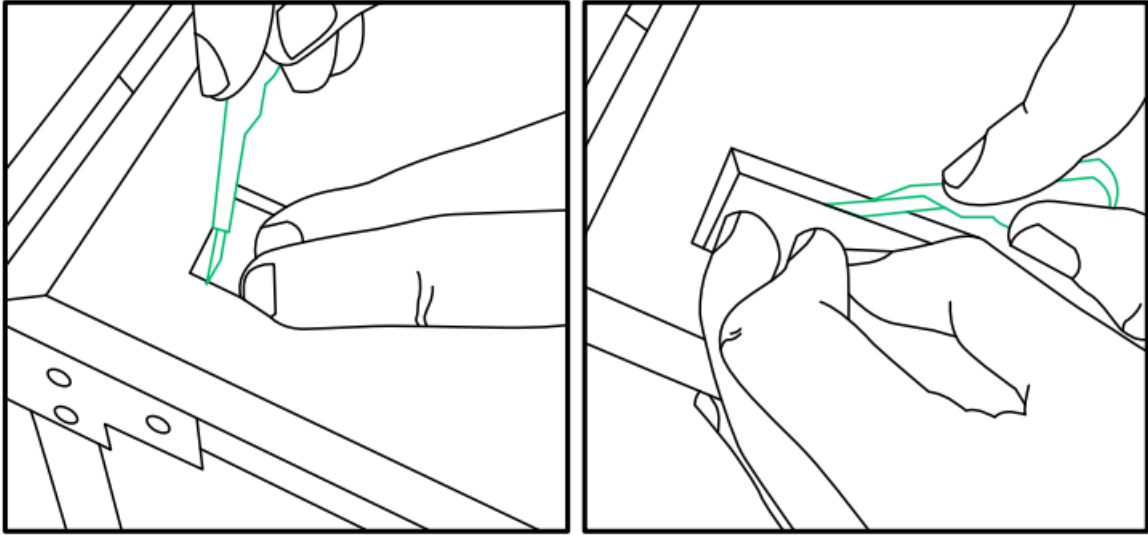
Step 3: Finish the outline

Once you have cut the full outline, you can then remove the item from the layout and continue cutting through to the desired depth, approximately $\frac{3}{4}$ of the item's overall depth.



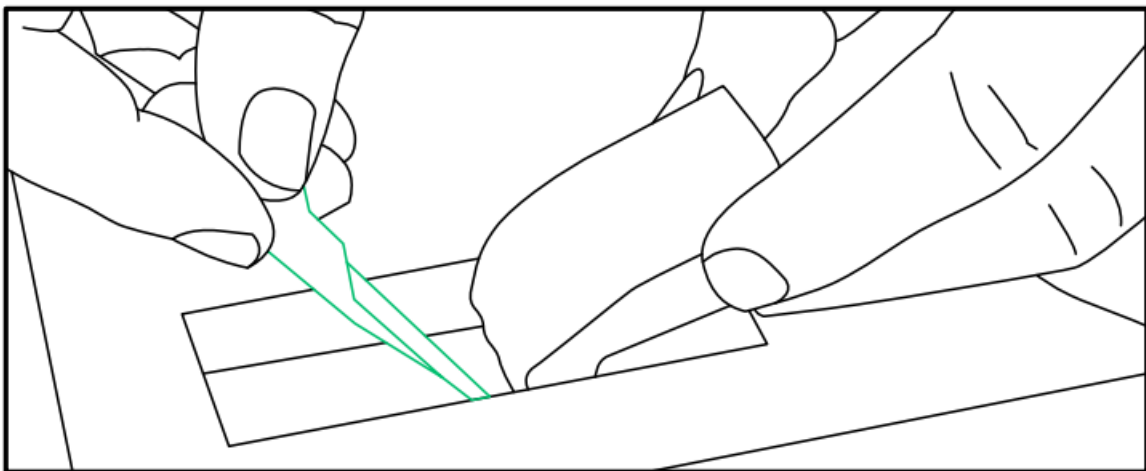
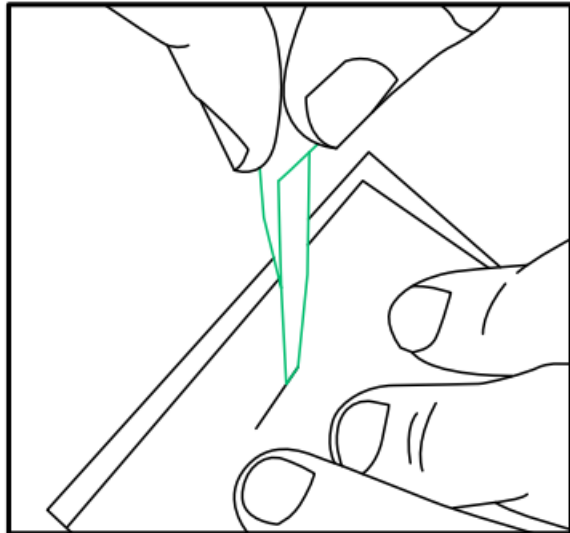
Step 4: Press down and cut

Press down on the area to be cut away with your fingers. This will create a gap between the foam you are leaving and the foam you are removing. Now you can carefully cut at an angle all the way around the shape, always working towards the centre.

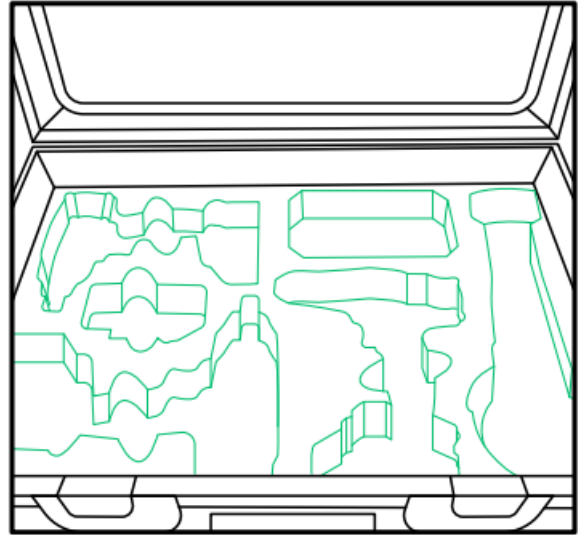
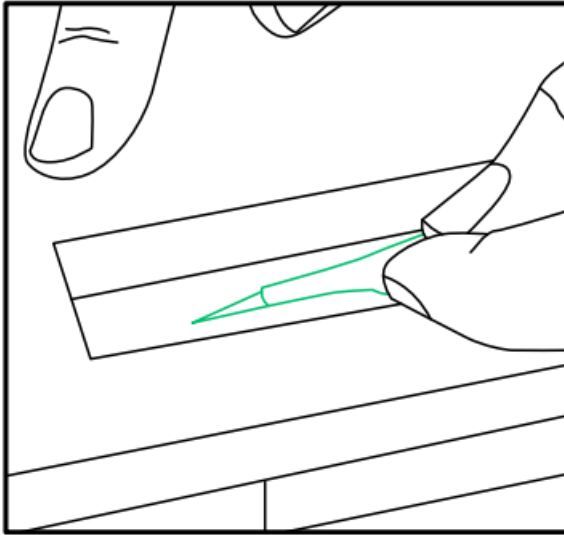


Step 5: Cut inwards to remove

Keep cutting around the outline, working your way inwards from both sides in an effort to start removing the foam. On shallow items; once an amount of foam has been cut, it is possible to lift the foam and undercut the shape.



When you meet in the middle, you can then remove the foam, creating the space for the item. If required, remove any excess foam and use the scalpel blade for smoothing. Repeat the process for each item as per the desired layout. For deeper section cutting i.e. beyond the length the scalpel blade: Repeat the same process as described for shallow items until the overall desired depth is achieved.

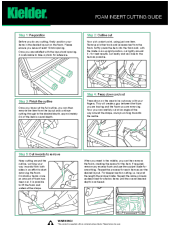


WARNING!

This product is supplied with an extremely sharp blade. Please take extra care when using the cutting tool. It is recommended that you wear protective gloves during use. Ensure the blade is discarded in a safe responsible manner.

Kielder®

Documents / Resources

	<p>Kielder PRO Foam Insert Cutting [pdf] User Guide PRO, PRO Foam Insert Cutting, Foam Insert Cutting, Insert Cutting, Cutting</p>
---	--