



# KICKER BTLREMAA MultiPro Tailgate Audio System Instruction Manual

[Home](#) » [KICKER](#) » KICKER BTLREMAA MultiPro Tailgate Audio System Instruction Manual 

KICKER BTLREMAA MultiPro Tailgate Audio System



## Contents

### [1 Overview](#)

### [2 Installation](#)

### [3 Documents / Resources](#)

#### [3.1 References](#)

### [4 Related Posts](#)

## Overview

### IMPORTANT SAFETY WARNING

PROLONGED CONTINUOUS OPERATION OF AN AMPLIFIER, SPEAKER, OR SUBWOOFER IN A DISTORTED, CLIPPED OR OVER-POWERED MANNER CAN CAUSE YOUR AUDIO SYSTEM TO OVERHEAT, POSSIBLY CATCHING FIRE AND RESULTING IN SERIOUS DAMAGE TO YOUR COMPONENTS AND/OR INSTALLATION LOCATION. KICKER PRODUCTS ARE CAPABLE OF PRODUCING SOUND LEVELS THAT CAN PERMANENTLY DAMAGE YOUR HEARING! TURNING UP A SYSTEM TO A LEVEL THAT HAS AUDIBLE DISTORTION IS MORE DAMAGING TO YOUR EARS THAN LISTENING TO AN UNDISTORTED SYSTEM AT THE SAME VOLUME LEVEL. THE THRESHOLD OF PAIN IS ALWAYS AN INDICATOR THAT THE SOUND LEVEL IS TOO LOUD AND MAY PERMANENTLY DAMAGE YOUR HEARING. PLEASE USE COMMON SENSE WHEN CONTROLLING VOLUME.

### FCC CAUTION

THIS DEVICE COMPLIES WITH PART 15 OF THE FCC RULES. OPERATION IS SUBJECT TO THE FOLLOWING TWO CONDITIONS:

(1) THIS DEVICE MAY NOT CAUSE HARMFUL INTERFERENCE, AND (2) THIS DEVICE MUST ACCEPT ANY INTERFERENCE RECEIVED, INCLUDING INTERFERENCE THAT MAY CAUSE UNDESIRE OPERATION.

ANY CHANGES OR MODIFICATIONS NOT EXPRESSLY APPROVED BY THE PARTY RESPONSIBLE FOR COMPLIANCE COULD VOID THE USER'S AUTHORITY TO OPERATE THE EQUIPMENT.

**NOTE:** THIS EQUIPMENT HAS BEEN TESTED AND FOUND TO COMPLY WITH THE LIMITS FOR A CLASS B DIGITAL DEVICE, PURSUANT TO PART 15 OF THE FCC RULES. THESE LIMITS ARE DESIGNED TO PROVIDE REASONABLE PROTECTION AGAINST HARMFUL INTERFERENCE IN A RESIDENTIAL INSTALLATION. THIS EQUIPMENT GENERATES USES AND CAN RADIATE RADIO FREQUENCY ENERGY AND, IF NOT INSTALLED AND USED IN ACCORDANCE WITH THE INSTRUCTIONS, MAY CAUSE HARMFUL INTERFERENCE TO RADIO COMMUNICATIONS. HOWEVER, THERE IS NO GUARANTEE THAT INTERFERENCE WILL NOT OCCUR IN A PARTICULAR INSTALLATION. IF THIS EQUIPMENT DOES CAUSE HARMFUL INTERFERENCE TO RADIO OR TELEVISION RECEPTION, WHICH CAN BE DETERMINED BY TURNING THE EQUIPMENT OFF AND ON, THE USER IS ENCOURAGED TO TRY TO CORRECT THE INTERFERENCE BY ONE OR MORE OF THE FOLLOWING MEASURES:

- REORIENT OR RELOCATE THE RECEIVING ANTENNA.
- INCREASE THE SEPARATION BETWEEN THE EQUIPMENT AND RECEIVER.
- CONNECT THE EQUIPMENT INTO AN OUTLET ON A CIRCUIT DIFFERENT FROM THAT TO WHICH THE RECEIVER IS CONNECTED.
- CONSULT THE DEALER OR AN EXPERIENCED RADIO/TV TECHNICIAN FOR HELP.

**FCC ID:** RGR-BTLREMAA

**RF WARNING FOR MOBILE DEVICE:**

THIS EQUIPMENT COMPLIES WITH FCC RADIATION EXPOSURE LIMITS SET FORTH FOR AN UNCONTROLLED ENVIRONMENT. THIS EQUIPMENT SHOULD BE INSTALLED AND OPERATED WITH MINIMUM DISTANCE 20CM BETWEEN THE RADIATOR & YOUR BODY.

**IC CAUTION**

CAN ICES-003(B) / NMB-003(B)

RSS-GEN ISSUE 5 FEBRUARY 2021" & "CNR-GEN 5E ÉDITION FÉVRIER 2021:

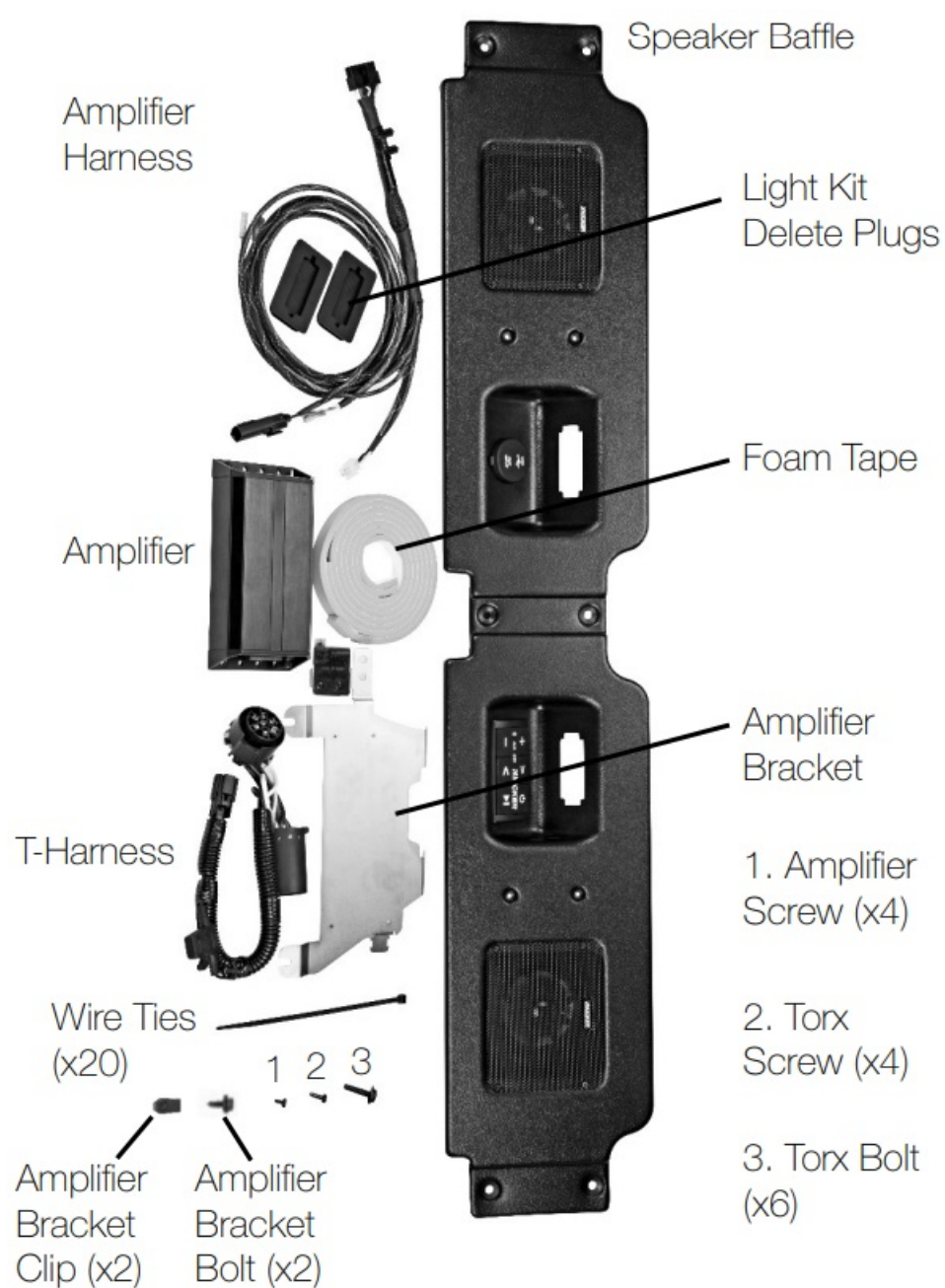
THIS DEVICE COMPLIES WITH INDUSTRY CANADA LICENCE-EXEMPT RSS STANDARD(S). OPERATION IS SUBJECT TO THE FOLLOWING TWO CONDITIONS: (1) THIS DEVICE MAY NOT CAUSE INTERFERENCE, AND (2) THIS DEVICE MUST ACCEPT ANY INTERFERENCE, INCLUDING INTERFERENCE THAT MAY CAUSE UNDESIRE OPERATION OF THE DEVICE.

THIS EQUIPMENT COMPLIES WITH IC RSS-102 RADIATION EXPOSURE LIMITS SET FORTH FOR AN UNCONTROLLED ENVIRONMENT. THIS EQUIPMENT SHOULD BE INSTALLED AND OPERATED WITH MINIMUM DISTANCE 20CM BETWEEN THE RADIATOR & YOUR BODY

**Tools Required**

Torx T25 Screwdriver	Torx T30 Screwdriver
Phillips Screwdriver	Ratchet
10mm Socket	Pry Too
Drill	1/8 inch (.125" –
	3.175mm) Drill Bit

## Package Contents

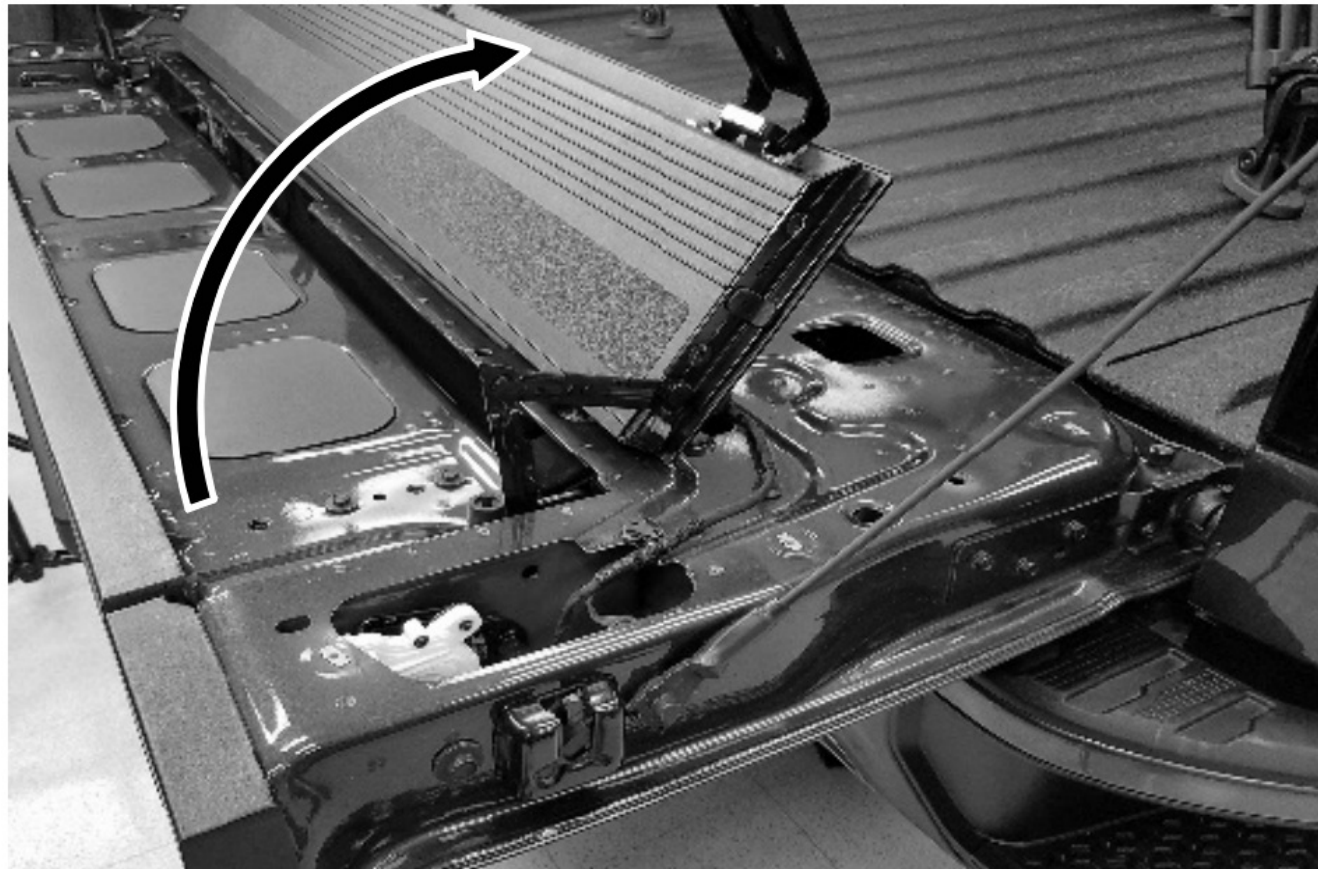
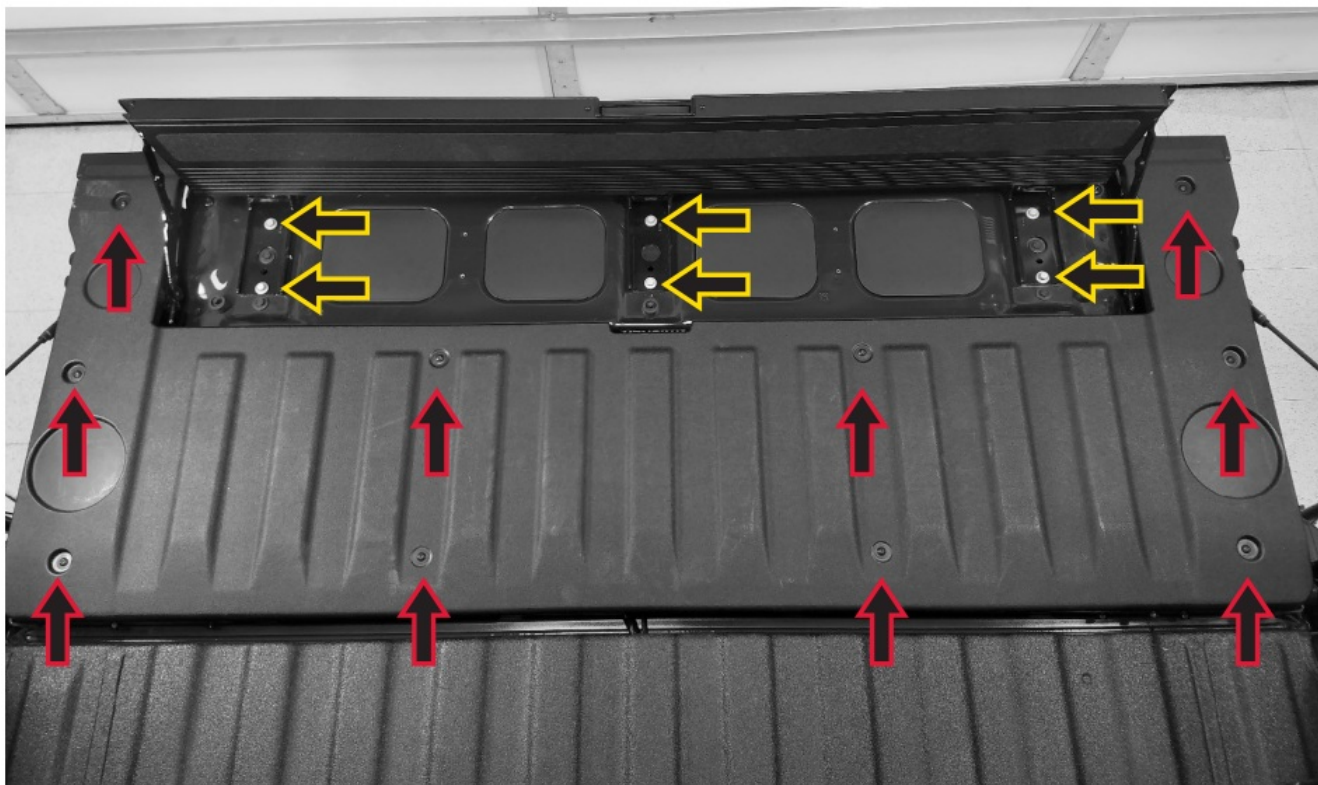


## Installation

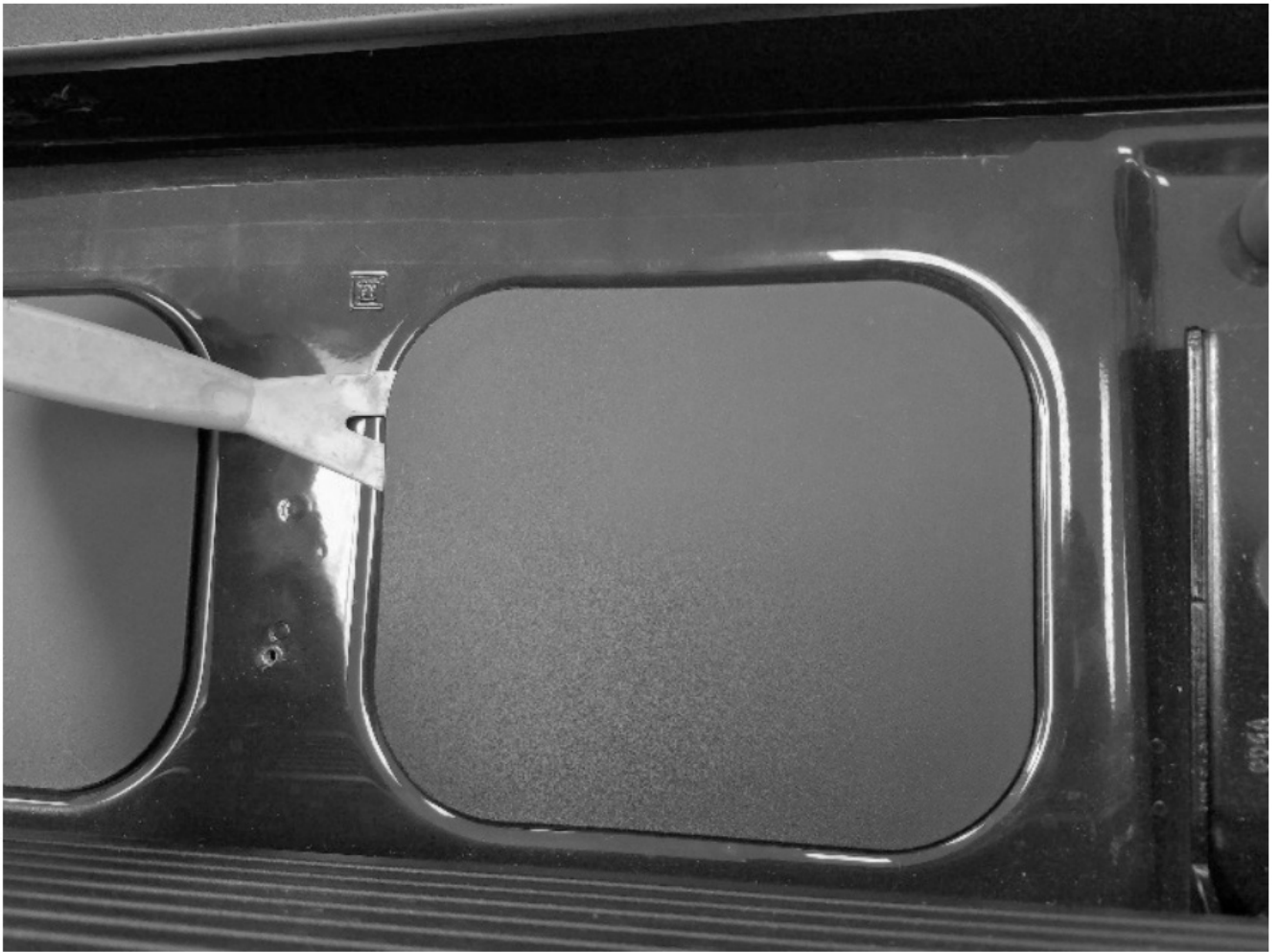


## Disassembly:

1. Remove the trailer hitch from the receiver if installed prior to opening tailgate.
2. Open the tailgate and the step. Remove the ten screws securing the tailgate protector and take it off. Remove the six bolts (not re-used) securing the step and rotate the step forward to rest on the tailgate.



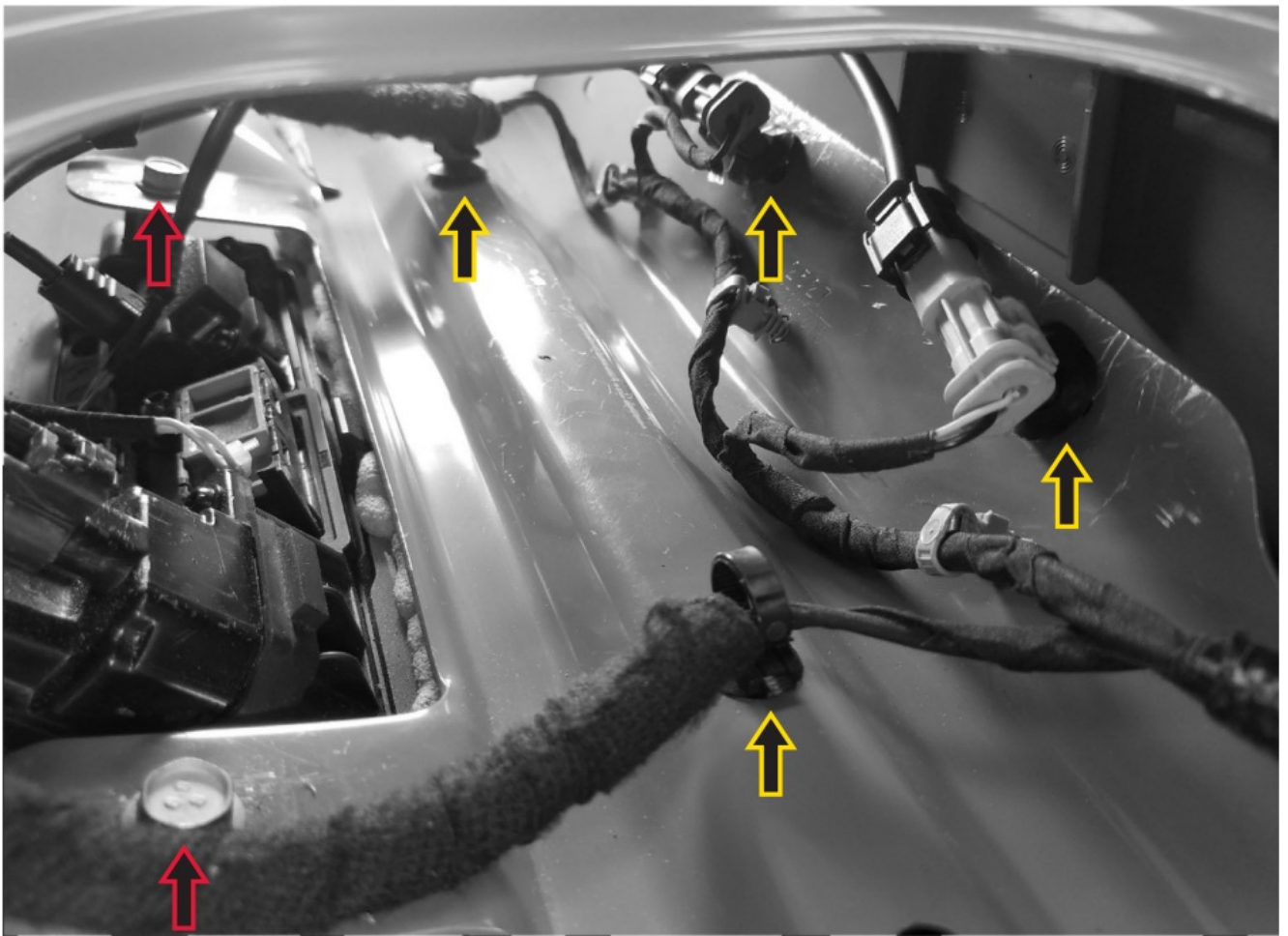
3. Remove the four plastic cover panels.  
Some vehicles may be equipped with a light kit in two of the panels. If equipped with lights, the lights will be reinstalled into the Kicker speaker baffle e later.



**Note:** Light kits (GM part number:

84347814) can be purchased separately from any GM dealership

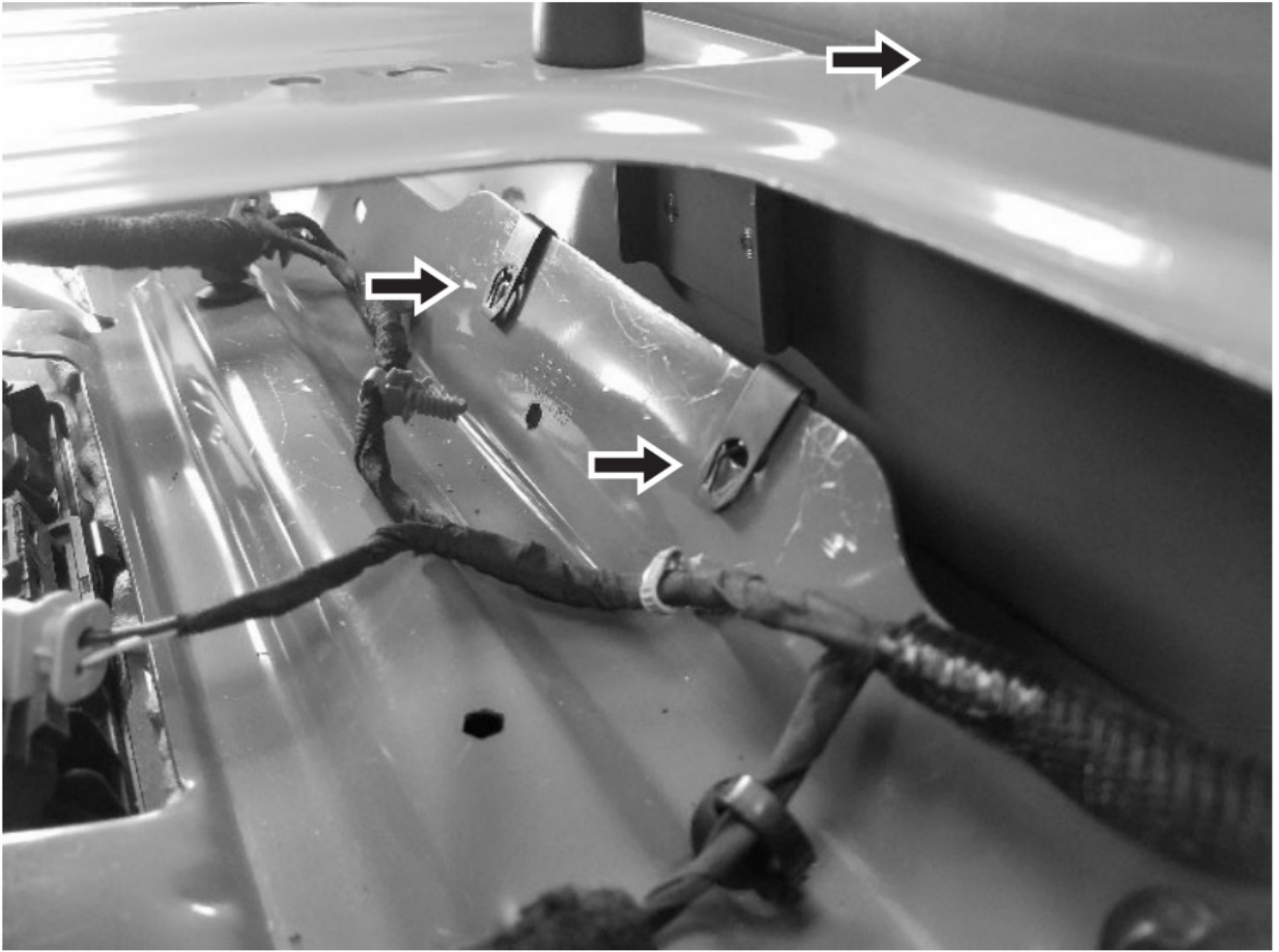
4. Loosen the two bolts securing the tailgate handle.
5. Remove the wire retainers indicated.



**Install:**

6. Install the supplied threaded clips.

Front of Vehicle



7. Install the amplifier mounting bracket through the right-of-center hole and secure with the tailgate handle bolts and the two supplied bolts.
8. Re-attach the wire retainers to the amplifier bracket.





9. Install the amplifier onto the amplifier bracket with the supplied amplifier screws (short screws x 4).



10. Connect the amplifier harness to the amplifier and the four-pin connector to the tilt switch attached to the amplifier bracket.

Route the amplifier harness along the factory harness toward the passenger side.

**Note:** The tilt switch is designed to turn the speaker system off when the inner tailgate is not in the fully down position. Failure to make this connection or attempting to bypass this switch will result in a constant drain on the vehicle battery. Likewise, any cutting, splicing, or other modifications made to the amplifier harness will immediately void the warranty.

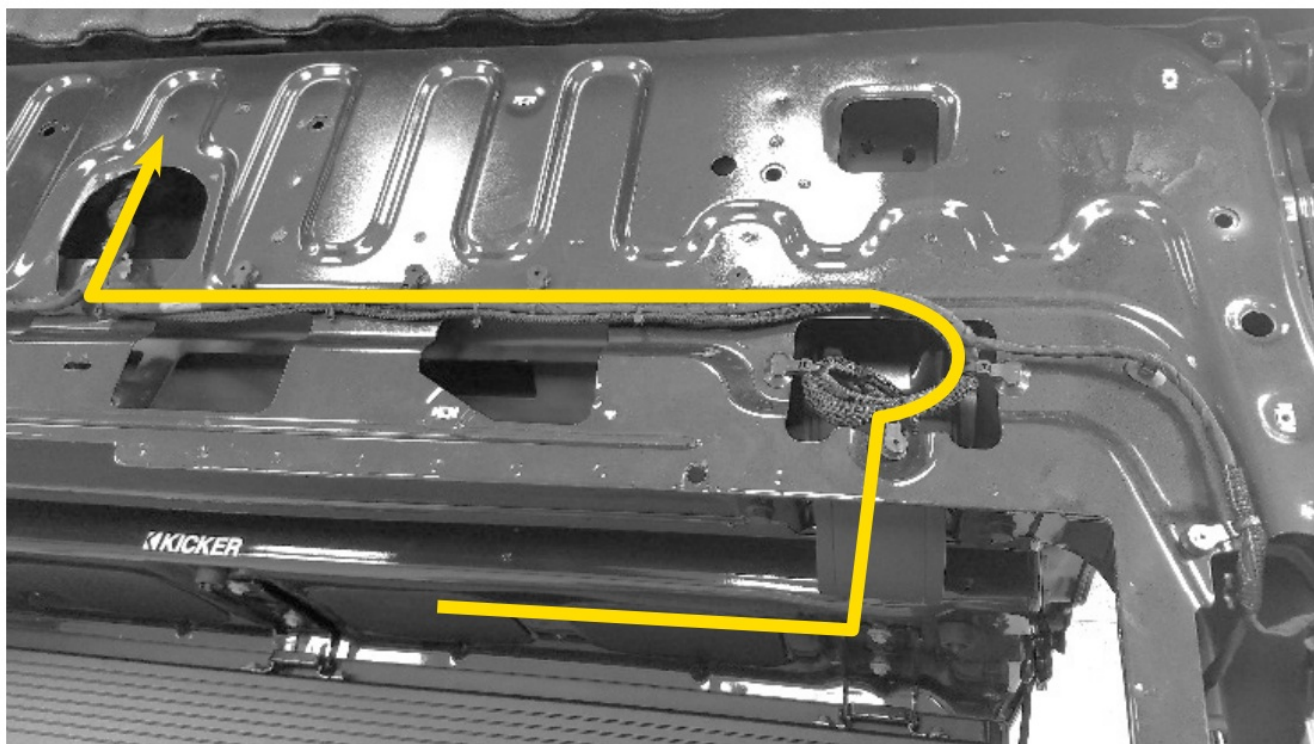
11. Disconnect the connector pictured and install the light kit T-harness (if equipped).

Installation

12. Fold the inner tailgate section down and snap loose the plastic hinge cover on the passenger side to aid in harness routing.

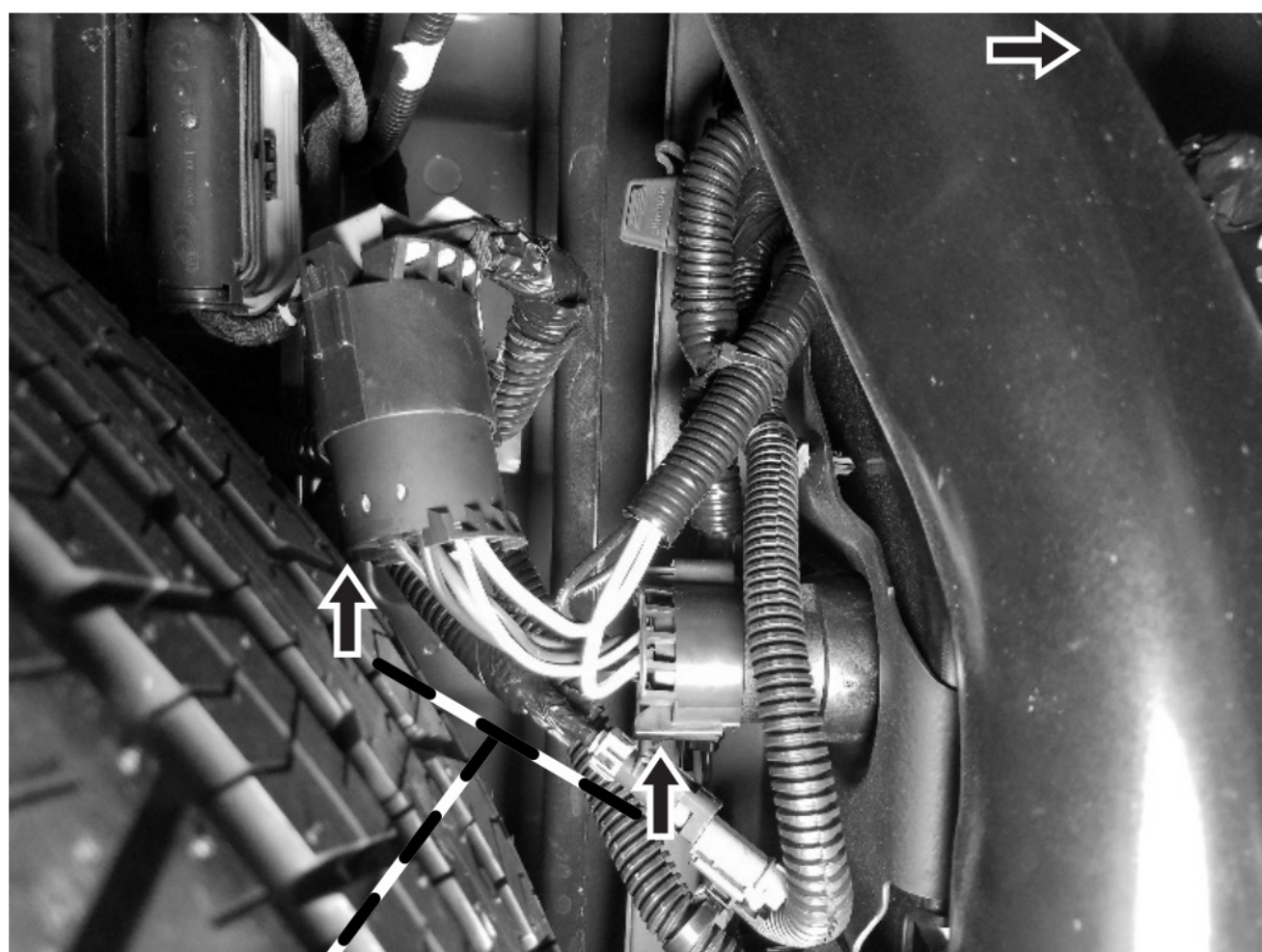


13. Disconnect the negative battery cable.
14. Continue to route the amplifier harness along the factory harness to the underneath side of the bed near the back side of the trailer connector. Secure amplifier harness to factory harness with supplied wire ties.  
(Trim wire tie ends)



15. Disconnect the trailer connector and install the T-harness between the trailer connector and the factory harness.

Connect the two-pin connector of the T-harness to the amplifier harness.



T-Harness

16. Install the supplied foam onto both sides of the speaker baffle.

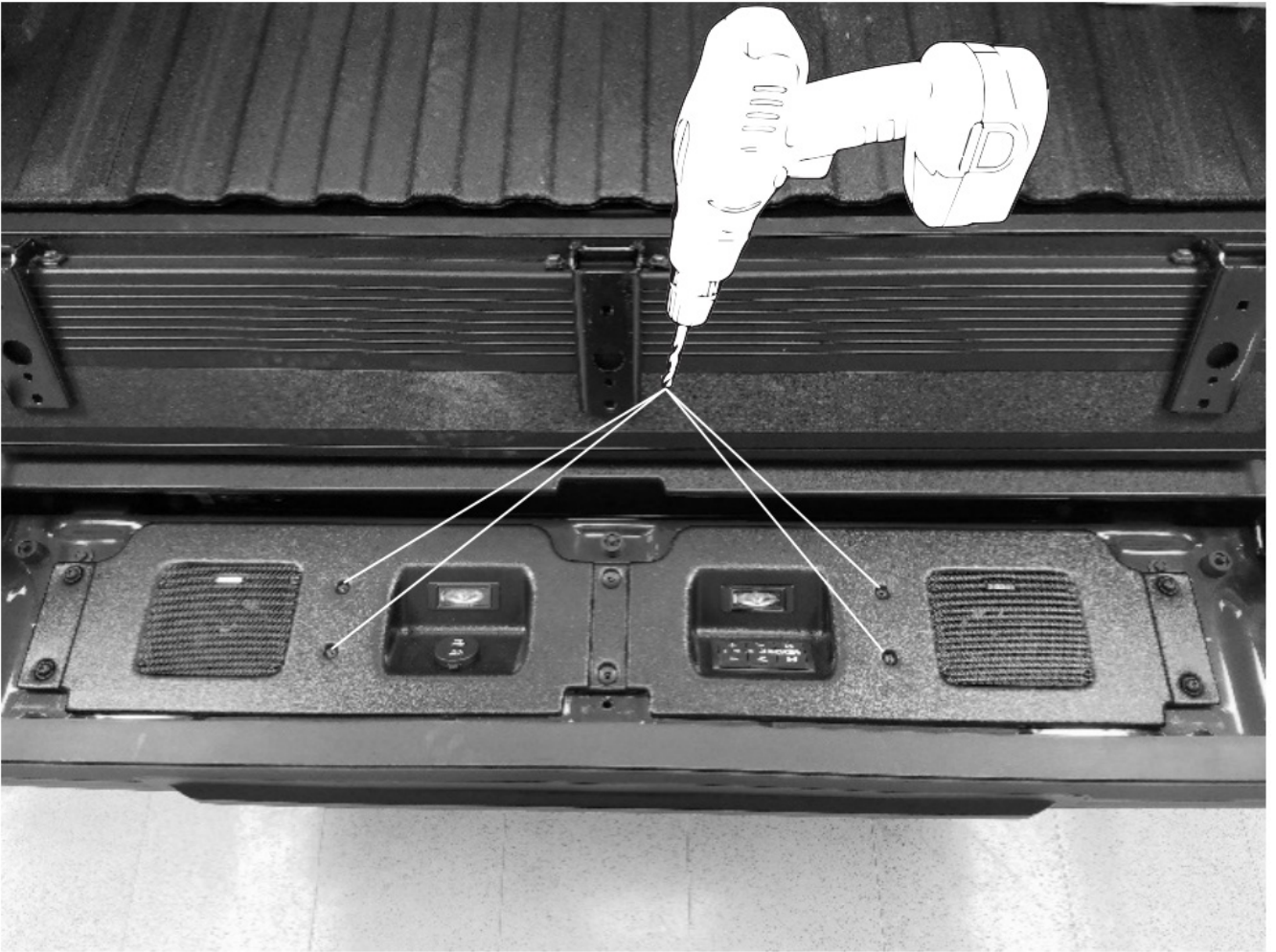




17. Temporarily install the speaker baffle and loosely install all six supplied replacement bolts.
18. Make sure the speaker baffle is perfectly mated to the tailgate and tighten the two center bolts.
19. Pre-drill the four pilot holes for the supplied fine-threaded screws using a 1/8 (.125) drill bit and then remove the bolts and speaker baffle.

**Note:** Take care to control drill as it penetrates metal to avoid hitting wires.


1/8"  
.125 inches







## Documents / Resources

 The image shows the cover of the KICKER installation manual. It features the KICKER logo at the top left, followed by the text 'Installation Manual', 'Manual de Instalación', and 'Manuel d'Installation'. Below this is a large, stylized 'K' graphic. To the right of the 'K' is the text 'MPQ2 KICKER MultiPro™ Tailgate Audio System'. At the bottom left, there are three small flags representing the United States, Mexico, and France.	<p><a href="#">KICKER BTLREMAA MultiPro Tailgate Audio System</a> [pdf] Instruction Manual BTLREMAA MultiPro Tailgate Audio System, BTLREMAA, MultiPro Tailgate Audio System, Tailgate c, Tailgate Audio System</p>
-----------------------------------------------------------------------------------------------------------------------------------------------------------------------------------------------------------------------------------------------------------------------------------------------------------------------------------------------------------------------------------------------------------------------------------------------------------------------------------------------------------------------------------	-------------------------------------------------------------------------------------------------------------------------------------------------------------------------------------------------------------------------

## References

- [User Manual](#)