



KGEAR GP8A Active 8 Inch Sub + line Array on battery User Manual

[Home](#) » [KGEAR](#) » KGEAR GP8A Active 8 Inch Sub + line Array on battery User Manual 

Contents

- [1 KGEAR GP8A Active 8 Inch Sub + line Array on battery](#)
- [2 Product Information](#)
- [3 Key Features](#)
- [4 Rear Panel Features](#)
- [5 Product Usage Instructions](#)
- [6 Unpacking](#)
- [7 IMPORTANT SAFETY INSTRUCTIONS](#)
- [8 General heed and warnings](#)
- [9 Service](#)
- [10 Assembling Instructions](#)
- [11 Cleaning](#)
- [12 Technical Specifications](#)
- [13 DIMENSION](#)
- [14 Documents / Resources](#)
 - [14.1 References](#)

KGEAR

KGEAR GP8A Active 8 Inch Sub + line Array on battery



Product Information

The GP8A/GP8AB/GP8 is a column loudspeaker system designed for professional use. It consists of 8 active/passive subwoofers and a 4×2.5 modular column system. The GP8A is an active column loudspeaker, while the GP8AB is an active column loudspeaker operated by an 8000mAh battery for up to 9 hours of playtime. The GP8 is a passive column loudspeaker system that requires an external power audio amplifier, such as the KGEAR GA201. The GP8A system can be connected wirelessly via Bluetooth 4.2 TWS, allowing for true wireless stereo configuration when paired with another GP8A system.

Key Features

- Active/Passive column loudspeaker system
- Bluetooth 4.2 TWS for wireless connection (GP8A only)
- 8000mAh battery for up to 9 hours of playtime (GP8AB only)
- Modular design with 8 subwoofers and 4×2.5 column spacers

Rear Panel Features

- Built-in media player with playback controls
- Knob for adjusting the reverb effect on the input signal of channels 1 and 2
- Knob for adjusting the input signal volume of channels 1 and 2
- Toggle switch for selecting the input channels 1 and 2
- XLR microphone input for channels 1 and 2
- MAINS power switch
- IEC MAINS power inlet
- XLR line out connector
- Battery charge indicator (GP8AB only)
- 3.5mm mini jack stereo line input

- Toggle switch for selecting the sound source between the built-in audio player and the stereo line input
- Knob for adjusting the stereo line input volume
- Knob for adjusting the volume of the bass
- Knob for adjusting the overall volume
- LED indicators
- USB port
- Display of the built-in media player

Product Usage Instructions

1. **Unpacking:** Carefully inspect the shipping carton upon arrival. Notify the shipping company immediately if any damage is found. Check that all the necessary parts are supplied with the product.
2. **Assembling Instructions:** Set the modular column spacers and speakers on top of the 8 subwoofer as shown in the picture provided. To disassemble the system, unplug each module by pulling up the column vertically.
3. **Power Connection:** Connect the appropriate power connector according to local regulations.
4. **Wireless Connection (GP8A only):** To connect a secondary GP8A system wirelessly, enable Bluetooth on both systems and pair them using Bluetooth 4.2 TWS.
5. **Audio Input:** Use the toggle switch and knobs to select and adjust the input channels (1 and 2). The XLR microphone inputs are available for channels 1 and 2. The stereo line input can be selected using the toggle switch and adjusted with the corresponding knob.
6. **Volume Control:** Adjust the reverb effect, input signal volume, bass volume, and overall volume using the respective knobs.
7. **Media Playback:** Use the built-in media player to play audio files. Control playback using the playback controls on the rear panel. The media player display shows relevant information.
8. **Battery Charging (GP8AB only):** Monitor the battery charge level using the battery charge indicator. Connect the included power adapter to charge the 8000mAh battery.

For any further questions or assistance, please contact K-array customer service at info@kgear.it or reach out to the local distributor in your country.

Unpacking

Each KGEAR device is inspected before leaving the factory. Upon arrival, carefully inspect the shipping carton, then examine and test your new device. If you find any damage, immediately notify the shipping company. Check that the following parts are supplied with the product:

KGEAR GP8A

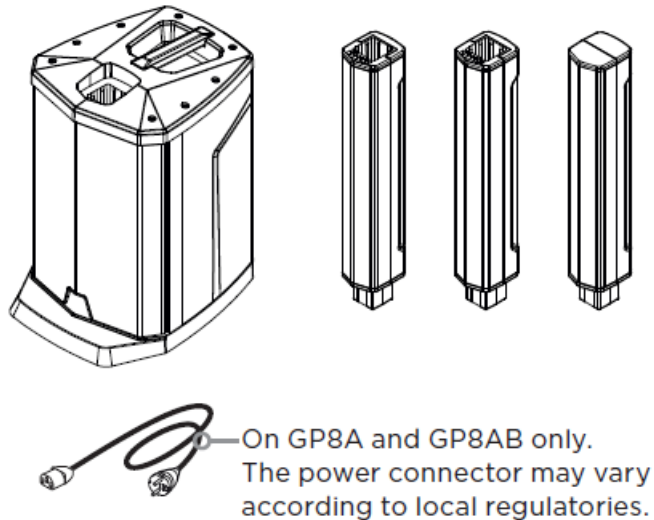
- 1x 4x2.5" modular column loudspeaker
- 2x modular column spacers
- 1x 8" active subwoofer
- 1x Power cord

KGEAR GP8

- 1x 4×2.5" modular column loudspeaker
- 2x modular column spacers
- 1x 8" passive subwoofer

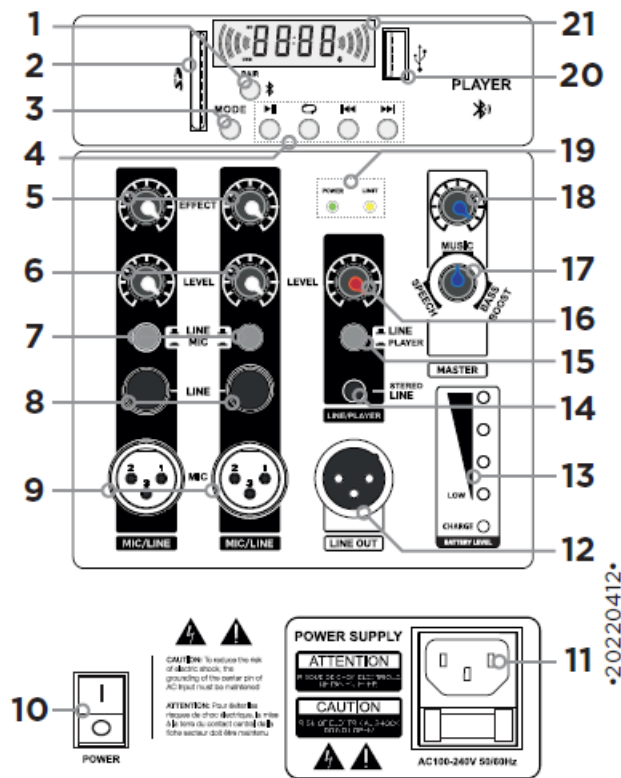
KGEAR GP8AB

- 1x 4×2.5" modular column loudspeaker
- 2x modular column spacers
- 1x 8" active subwoofer
- 1x Power cord



GP8A / GP8AB Rear Panel

1. Bluetooth® pairing mode button
2. SD card reader
3. MODE button: select the sound source for the built-in media player
4. Playback controls for the built-in media player
5. Knob for adjusting the reverb effect on the input signal of channels 1 and 2
6. Knob for adjusting the input signal volume of channels 1 and 2
7. Toggle switch for selecting the input connector (Line/Mic) for channels 1 and 2
8. 6,35mm (1/4 in) jack line input for channels 1 and 2
9. XLR microphone input for channels 1 and 2
10. MAINS power switch
11. IEC MAINS power inlet
12. XLR line out connector



13. Battery charge indicator (GP8AB only)
14. 3,5mm mini jack stereo line input
15. Toggle switch for selecting the sound source between the built in audio player and the stereo line input
16. Knob for adjusting the stereo line input volume
17. Knob for adjusting the volume of the bass
18. Knob for adjusting the overall volume
19. LED indicators
20. USB port
21. Display of the built-in media player

IMPORTANT SAFETY INSTRUCTIONS

CAUTION: RISK OF ELECTRIC SHOCK DO NOT OPEN

ATTENTION: RISQUE DE CHOC ELECTRIQUE NE PAS OUVRIR

CAUTION: TO REDUCE THE RISK OF ELECTRIC SHOCK, DO NOT REMOVE COVER (OR BACK). NO USER-SERVICEABLE PARTS INSIDE. REFER SERVICING TO QUALIFIED SERVICE PERSONNEL.

- This symbol alerts the user to the presence of recommendations about the product's use and maintenance.
- The lighting flash with arrowhead symbol within an equilateral triangle is intended to alert the user to the presence of uninsulated, dangerous voltage within the product enclosure that may be of magnitude to constitute a risk of electrical shock.
- The exclamation point within an equilateral triangle is intended to alert the user to the presence of important operating and maintenance (servicing) instructions in this guide.
- Operator's manual; operating instructions This symbol identifies the operator's manual that relates to the operating instructions and indicates that the operating instructions should be considered when operating the device or control close to where the symbol is placed.
- For indoor use only This electrical equipment is designed primarily for indoor use.
- WEEE Please dispose of this product at the end of its operational lifetime by bringing it to your local collection

point or recycling center for such equipment.

- This device complies with Restriction of Hazardous Substances Directive.

Warning: Failure to follow these safety instructions could result in fire, shock or other injury or damage to the device or other property.

General heed and warnings

- Read these instructions.
- Keep these instructions.
- Heed all warnings.
- Follow all instructions.
- Do not use this apparatus near water.
- Clean only with dry cloth.
- Do not block any ventilation openings. Install in accordance with the manufacturer's instructions.
- Do not install near any heat sources such as radiators, heat registers, stoves, or other apparatus (including amplifiers) that produce heat
- Do not defeat the safety purpose of the polarized or grounding plug. A polarized plug has two blades with one wider than the other. A grounding plug has two blades and a third grounding prong. The wide blade or the third prong is provided for your safety. If the provided plug does not fit into your outlet, consult an electrician for replacement of the obsolete outlet.
- Only use attachments/accessories specified by the manufacturer.
- Protect the power cord from being walked on or pinched particularly at the plugs, convenience receptacles, and at the point where they exit from the apparatus.
- Clean the product only with a soft and dry fabric. Never use liquid cleaning products, as this may damage the products cosmetic surfaces.
- Use only with the cart, stand, tripod, bracket, or table specified by the manufacturer, or sold with the apparatus. When a cart is used, use caution when moving the cart/ apparatus combination to avoid injury from tip-over.



- Unplug this apparatus during lightning storms or when unused for long periods of time.
- Avoid placing the product in a location under direct sunlight or near any appliance that generates UV (Ultra Violet) light, as this may change the product surface finishing and cause a change in color.
- Refer all servicing to qualified service personnel. Servicing is required when the apparatus has been damaged in any way, such as power-supply cord or plug is damaged, liquid has been spilled or objects have fallen into the apparatus, the apparatus has been exposed to rain or moisture, does not operate normally, or has been dropped.

These apparatus are intended for professional use. Installation and commissioning may only be carried out by qualified and authorized personnel.

- **CAUTION:** These servicing instructions are for use by qualified service personnel only. To reduce the risk of electric shock, do not perform any servicing other than that contained in the operating instructions unless you are qualified to do so.
- **WARNING:** Only use attachments/accessories specified or provided by the manufacturer (such as the exclusive supply adapter, battery, etc.)
- Before turning the power on or off for all devices, set all volume levels to minimum.
- Use only speaker cables for connecting speakers to the speaker terminals. Be sure to observe the amplifier's rated load impedance particularly when connecting speakers in parallel. Connecting an impedance load outside the amplifier's rated range can damage the apparatus.
- KGEAR cannot be held responsible for damage caused by improper use of the loudspeakers.
- KGEAR will not shoulder any responsibilities for products modified without prior authorization.

Service

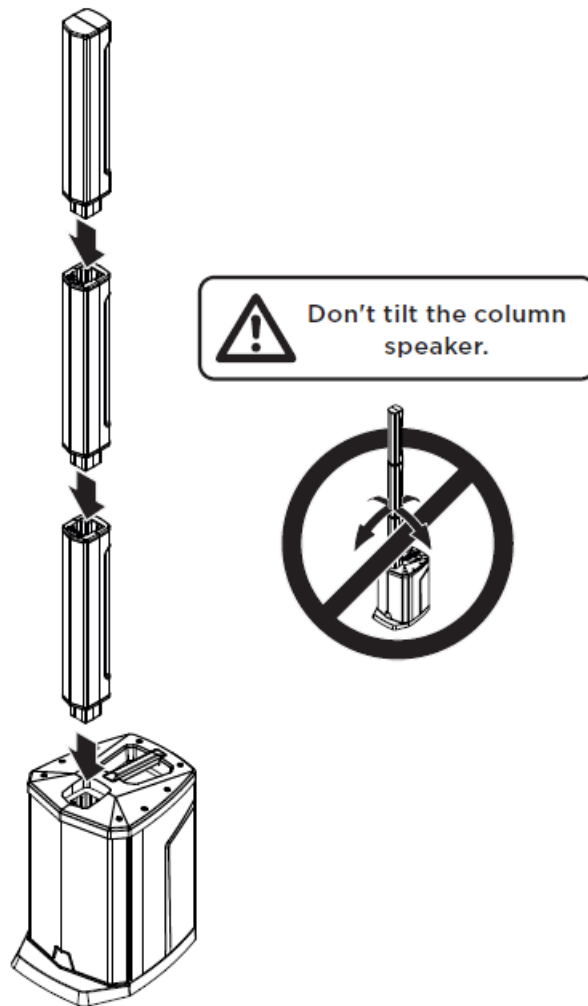
To obtain service:

1. Please have the serial number(s) of the unit(s) available for reference.
2. Contact the official KGEAR distributor in your country: or KGEAR headquarter at info@kgear.it. Please describe the problem clearly and completely to the Customer Service.
3. You will be contacted back for on-line servicing.
4. If the problem cannot be resolved over the phone, you may be required to send the unit in for service. In this instance, you will be provided with an RA (Return Authorization) number which should be included on all shipping documents and correspondence regarding the repair. Shipping charges are the responsibility of the purchaser.

Any attempt to modify or replace components of the device will invalidate your warranty. Service must be performed by an authorized K-array service center.

Assembling Instructions

Set the modular column spacers and speakers on top of the 8" subwoofer as shown in the picture below. In order to disassemble the system, please take care to unplug each module pulling up the column vertically.



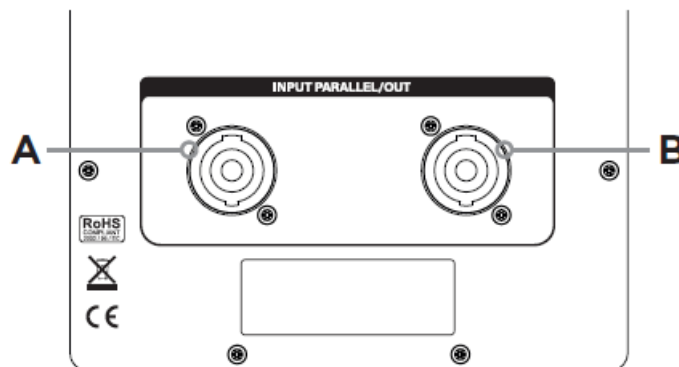
GP8A / GP8AB AC MAINS Supply

The GP8A features a **powered subwoofer**: the AC Main connection is made via the provided power cord. Once properly plugged to a reliable power source, toggle the MAINS power switch to turn on the system.

GP8A /GP8AB / GP8

GP8 Rear Panel

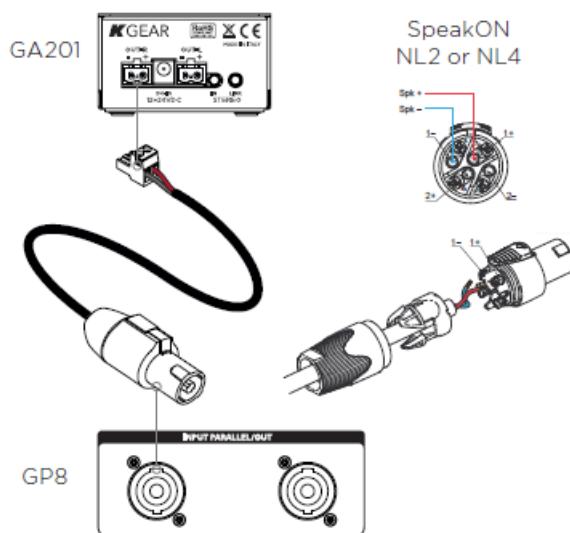
- **A. SpeakON connector:** speaker input
- **B. SpeakON connector:** parallel output



GP8 passive loudspeaker wiring

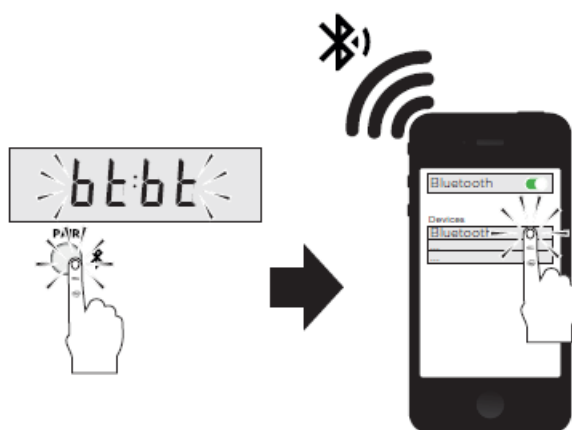
Once assembled, the GP8 passive loudspeaker shall be driven by a separate amplifier unit such as the GA201

audio power amplifier. Use a speakON NL2 or NL4 connector with signal on terminals 1+, 1- to drive the GP8 loudspeaker.



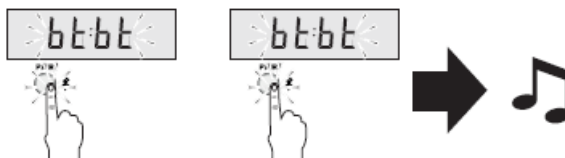
Pairing Bluetooth®

Push on the Bluetooth® pairing mode button to set the GP8A/GP8AB system waiting for a connection to a Bluetooth® player.



Pairing Bluetooth® TWS

Push on the Bluetooth® pairing mode button to set the the first GP8A/GP8AB system of a set of two units waiting for aconnection. Push on the Bluetooth® pairing mode button on the second GP8A/GP8AB unit of the set: the «bt:bt» text and the Bluetooth® logo on the lower right corner of the display of both systems will flicker. The connection is established when the displays stop flickering and the systems play a «ding-dong» sound.



Now you can connect a Bluetooth® player to the first GP8A/GP8AB system following the pairing Bluetooth® procedure.

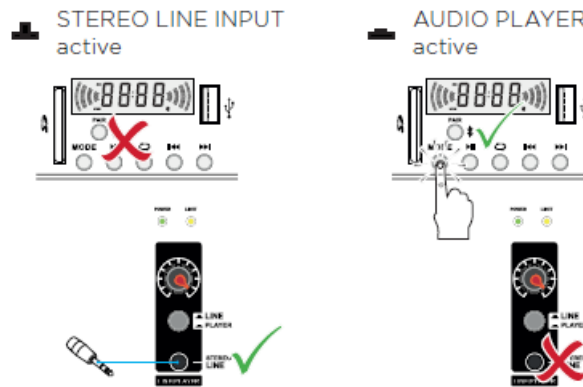
Built-in Player Source Selection

The built-in media player can access MP3 and WAV file on USB key or SD card. In order to select the source for the audio among USB, SD and Bluetooth push on the MODE button.



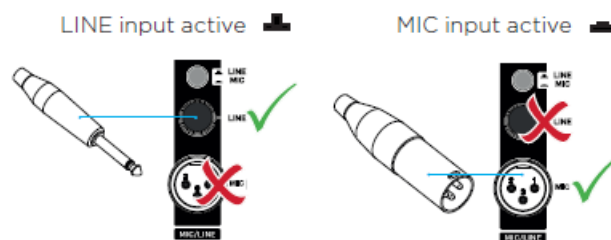
Audio Source Selection

The built-in media player can be bypassed in order to connect an external stereo player to the 3,5mm mini jack. Push on the LINE/PLAYER toggle switch for selecting the sound source



Line/MIC input Selection

Push on the LINE/MIC toggle switch for selecting the input connector for channels 1 and 2.



Cleaning

Use only a soft, dry cloth to clean the housing. Do not use any solvents, chemicals, or cleaning solutions containing alcohol, ammonia, or abrasives. Do not use any sprays near the product or allow liquids to spill into any openings.

Technical Specifications

GP8A / GP8AB

Technical specifications
Type
Powered Sub + Column line array system

<p>Transducers</p> <p>SUB: 8" woofer</p> <p>COLUMN: 4x 2.5" ferrite magnet</p>
<p>Frequency Response</p> <p>45 Hz – 16 kHz (-10 dB)</p>
<p>Max SPL 1</p> <p>108 dB (peak)</p>
<p>Coverage</p> <p>V. 40° H. 100°</p>
<p>Amp Module</p> <p>2-channel Class-D</p>
<p>Output Power</p> <p>2x 100 W @ 4 W</p>
<p>Operating Voltage</p> <p>100-240V AC, 50-60 Hz</p>
<p>Power Consumption</p> <p>250W Rated Load, (1/8 Max Output Power)</p>
<p>Analog INPUT / OUTPUT</p> <p>2x XLR + 2x jack (6.3mm) mic/line input 1x 3.5mm jack stereo input</p> <p>1x XLR-M line output</p>
<p>Digital INPUT</p> <p>USB 2.0</p> <p>SD card</p> <p>Bluetooth 4.2 with TWS technology to pair two GP8A for stereo listening</p>

<p>Controls</p> <p>Reverb effect mixing knobs</p> <p>Mic/Line channel input volume knobs Master volume knob</p> <p>Subwoofer level knob</p> <p>Playback controls</p>
<p>Battery (GP8AB only)</p> <p>Type: lithium ion battery cells Capacity: 8000mAh Nominal voltage: 11.1V</p> <p>Life: play music for about 9h at clip limit</p> <p>Charging time: from 0% to 100% in about 6h</p>
<p>Dimensions (WxLxH)</p> <p>317 x 400 x 1863 mm (12.5 x 15.7 x 73.3 in)</p>
<p>Weight</p> <p>14,5 kg (31.97 lb)</p>

1. Maximum SPL is calculated using a signal with crest factor 4 (12dB) measured at 1 m.

GP8

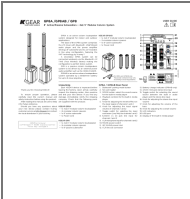
Technical specifications
Type Passive Sub + Column line array system
Transducers SUB: 8" woofer COLUMN: 4x 2.5" ferrite magnet
Frequency Response 45 Hz – 16 kHz (-10 dB)
Max SPL 1 108 dB (peak)
Coverage V. 40° H. 100°
Power Handling 100W
Nominal Impedance 8W
Connectors 2x NL2 SpeakON
Dimensions (WxLxH) 317 x 400 x 1863 mm (12.5 x 15.7 x 73.3 in)
Weight 11,5 kg (25.35 lb)

1. Maximum SPL is calculated using a signal with crest factor 4 (12dB) measured at 1 m.

DIMENSION

Mechanical View

Documents / Resources

	<p>KGEAR GP8A Active 8 Inch Sub + line Array on battery [pdf] User Manual</p> <p>GP8A Active 8 Inch Sub line Array on battery, GP8A, Active 8 Inch Sub line Array on battery, Su b line Array on battery, Array on battery</p>
---	--

References

-  [KGEAR](#)