

# Keysight IOLibSuite Application Installation Guide

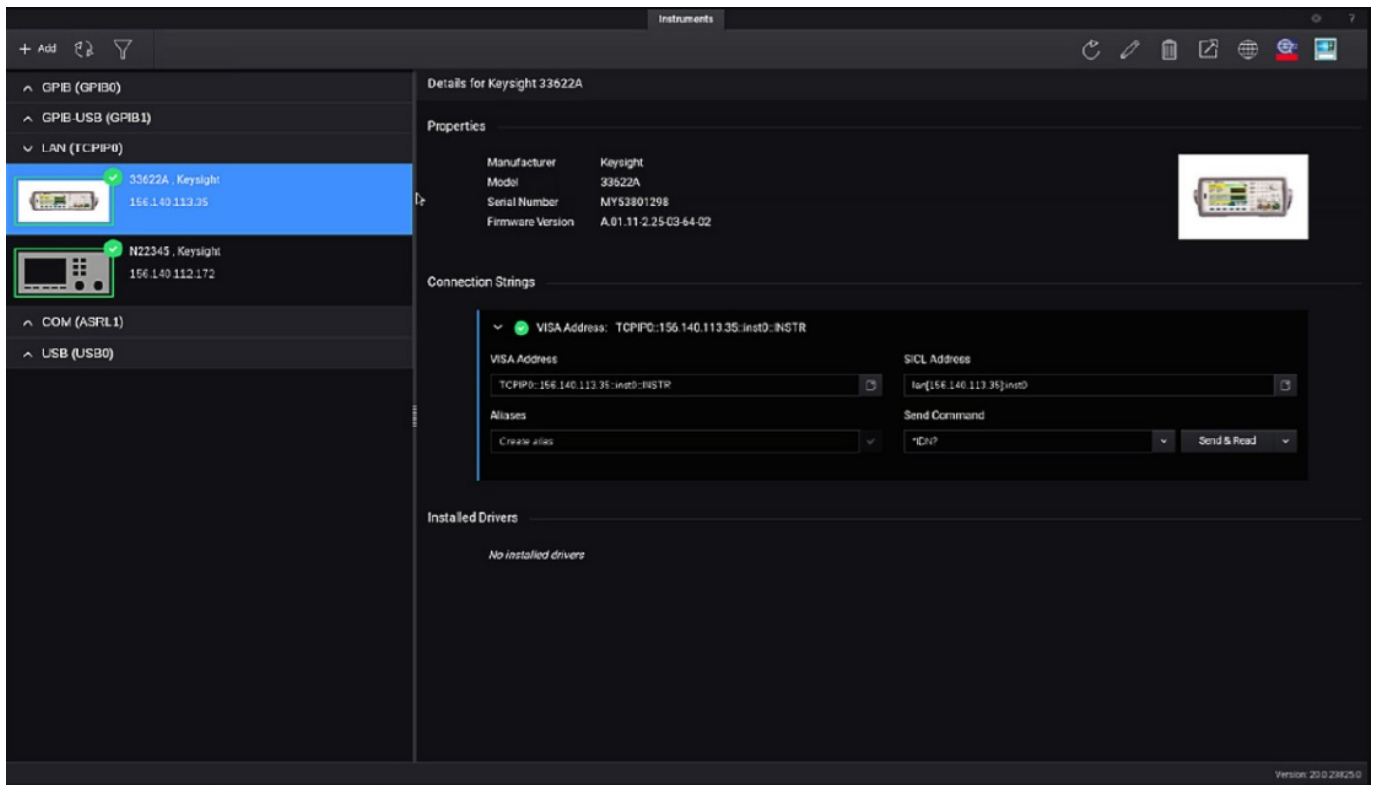
[Home](#) » [KEYSIGHT](#) » Keysight IOLibSuite Application Installation Guide 

## Contents

- 1 [Keysight IOLibSuite Application](#)
- 2 [Specifications](#)
- 3 [Product Usage Instructions](#)
- 4 [GETTING START](#)
- 5 [USB CONNECTION](#)
- 6 [LAN CONNECTION](#)
- 7 [Connect Device](#)
- 8 [Frequently Asked Questions](#)
- 9 [Documents / Resources](#)
  - 9.1 [References](#)
- 10 [Related Posts](#)



**Keysight IOLibSuite Application**



## Specifications

- **Connection Modes:** USB, LAN
- **Operating System Compatibility:** Windows XP and later
- **Software:** IOLibSuite\_16\_3\_17218.exe
- **Default IP Address:** 192.168.1.127

## Product Usage Instructions

### Install Software

1. Insert the installation CD into the CD-ROM drive while in Windows.
2. If the installation does not start automatically, run Setup.exe from the CD.
3. Follow the on-screen instructions for step-by-step installation.

### Connect DSO Scope to PC

1. Power on the device and connect it to the PC via a USB cable for driver installation.
2. Download and install IO Libraries Suite from the CD following the provided instructions.
3. After installation, open the Keysight IO libraries suite icon in the bottom right corner for device information.

### LAN Connection Setup

1. Connect the router to the DSO scope and PC using LAN cables.
2. Set up the local area network by configuring the IP settings to match the oscilloscope's network name.
3. Open the Network and Sharing Center to set up Internet Protocol Version (TCP/IPv4) with the correct IP address.

## Connect Device

1. Open the DSO software by double-clicking the shortcut on the desktop.
2. Select LAN type for device connection settings.
3. Set the PC's IP address to match the oscilloscope's network and ensure a successful connection.

## GETTING START

### Install Software

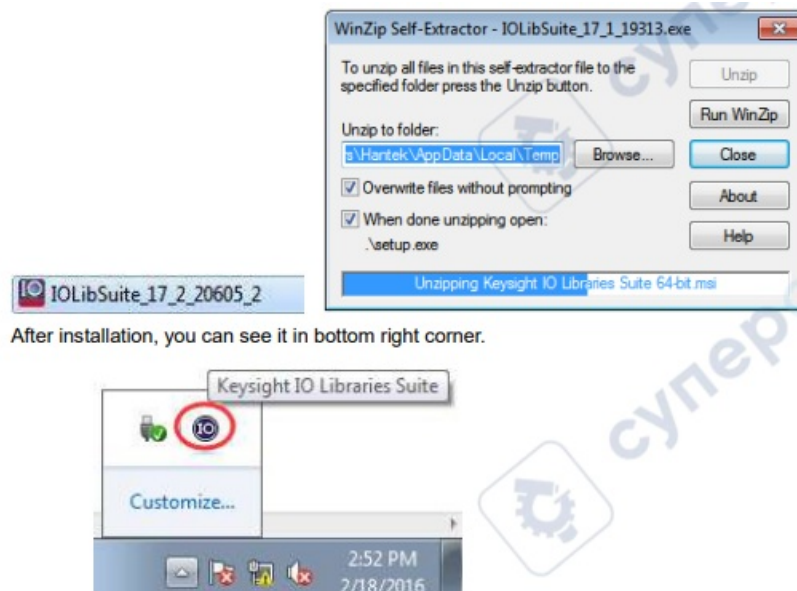
**Caution:** You must install the software before using the oscilloscope.

1. While in Windows, insert the installation CD into the CD-ROM drive.
2. The installation should start up automatically. Otherwise, in Windows Explorer, switch to the CD-ROM drive and run Setup.exe. According to the installation information, please install it step by step.

### Download and install the IO libraries suite.

You can install the software named IOLibSuite in the CD.

**Note:** Please download and install IOLibSuite\_16\_3\_17218.exe for the PC of the Windows XP system. Double-click the IO Libraries Suite program and install it. According to the installation information, please install it step by step. The installation maybe take several minutes.



After installation, you can see it in bottom right corner.

## Connect DSO Scope to PC

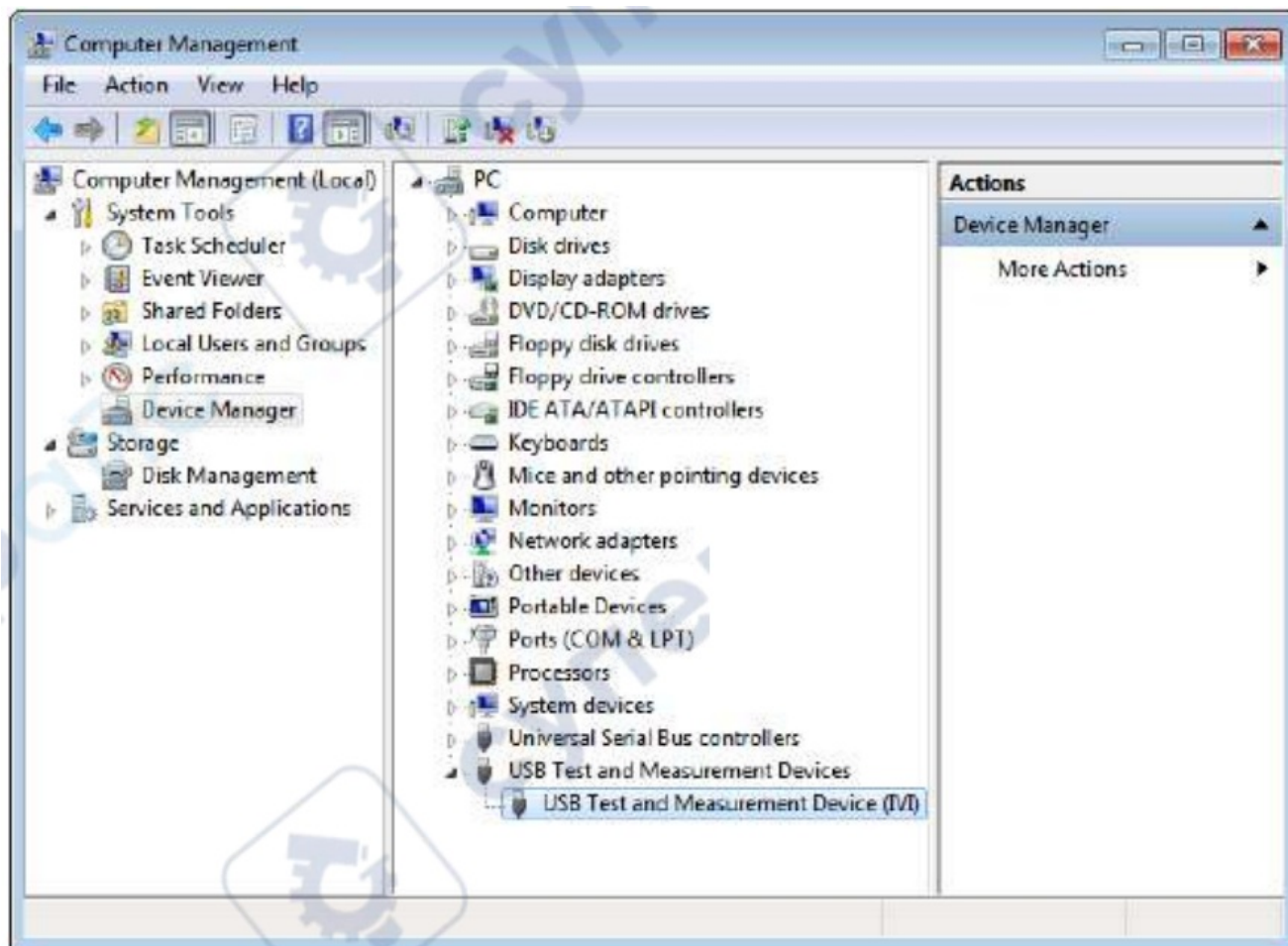
- Two connection modes:
- USB connection mode: Refer to USB CONNECTION.
- LAN connection mode: Refer to LAN CONNECTION.

## USB CONNECTION

1. Power on. Connect DSO scope to PC via USB cable. The driver will install it by itself. When the driver is installed successfully, there will be a prompt as follows:



2. After installing successfully, users can see driver information in device manager (It is same in LAN mode).

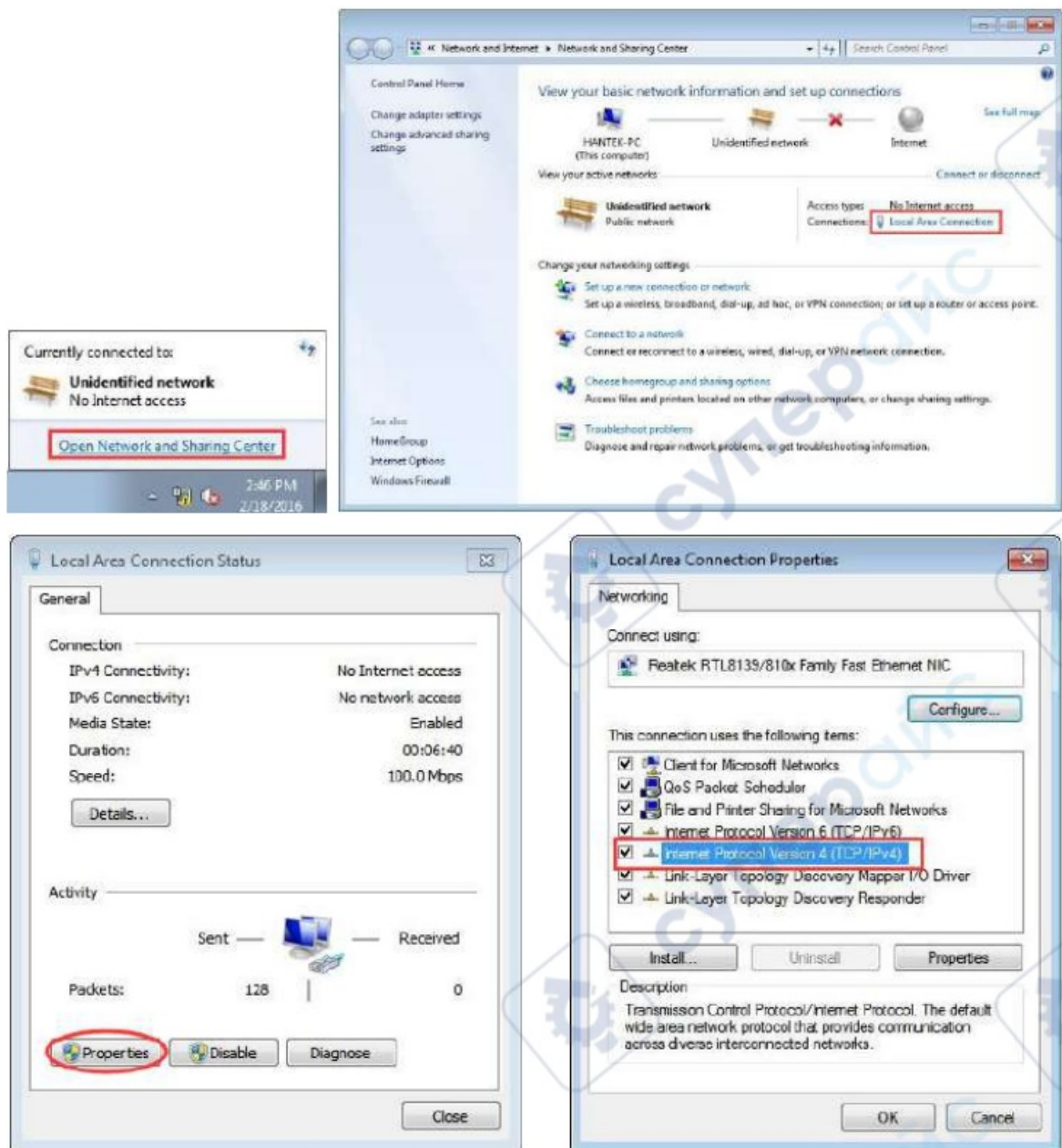


3. Click the Keysight 10 libraries suite icon in the bottom right corner, and choice "Connection Expert". Now users can see the device information.
4. If installing unsuccessfully, right-click to update the driver manually, and choose the correct route: C: Program Files IVI Foundation\VISAI\IVI USB Staging\b841a80\Windows
5. Double-click the "DSO-xx" shortcut on the desktop to open the software of the DSO device. The device is connected to the PC successfully. You can see the "Connected" tip in the status column.

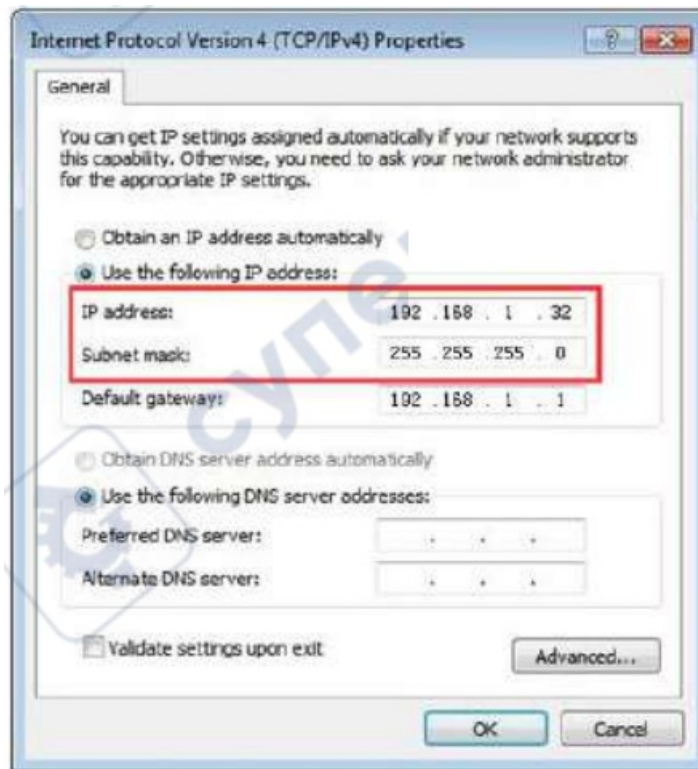
## LAN CONNECTION

### et up local area network (LAN)

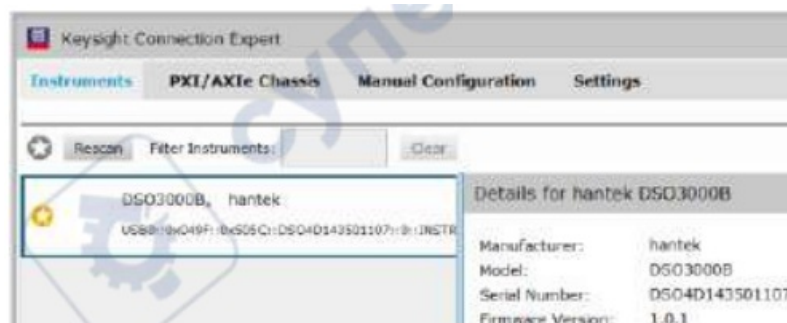
1. Connect router with DSO scope via one LAN cable. Connect router with PC via another LAN cable.
2. Open Network and Sharing Center->Local Area Connection-> Properties->Internet Protocol Version (TCP/IPv4)\*. Set the right IP of the PC in the same network segment with the oscilloscope's network name. The default IP is 192.168.1.127.



- Set PC's IP to 192.168.1.2 or others(192.168.1.2~192.168.1.255) except the IP of DSO scope (default 192.168.1.127). For example, the IP of the device is 192.168.1.32. Set Subnet mask in default.



Click the Keysight IO libraries suite icon in the bottom right corner, and choice “Connection Expert”. Now users can see the device information

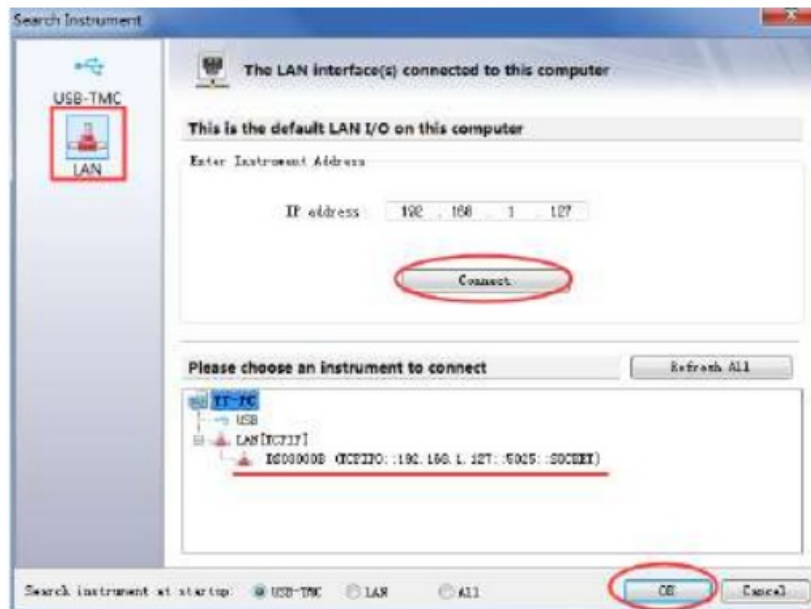


## Connect Device

Double-click the “DSO-xx” shortcut on the desktop(Or click the “File-> Connect” menu) to open the software of the DSO device.

1. Select “LAN type, the device connect setting dialog is as shown below:





2. The device is connected to the PC successfully. You can see “Connected” tip in the status column.

**Note:** In LAN mode, there is no need to use a 12V power adapter.

## Frequently Asked Questions

- **Q: What should I do if the driver installation fails?**
  - A: Right-click to update the driver manually and select the correct route: C:\Program Files\IVI Foundation\VISAI\IVI USB Staging\b841aa80\Windows.
- **Q: How can I verify if the device is successfully connected to the PC?**
  - A: You will see a “Connected” tip in the status column of the software after a successful connection.

## Documents / Resources



[Keysight IOLibSuite Application](#) [pdf] Installation Guide  
DSO3000, DSO-xxxx, IOLibSuite Application, IOLibSuite, Application

## References

- [User Manual](#)

[Manuals+](#), [Privacy Policy](#)

This website is an independent publication and is neither affiliated with nor endorsed by any of the trademark owners. The “Bluetooth®” word mark and logos are registered trademarks owned by Bluetooth SIG, Inc. The “Wi-Fi®” word mark and logos are registered trademarks owned by the Wi-Fi Alliance. Any use of these marks on this website does not imply any affiliation with or endorsement.