



# keychron Type-A M7 Wireless Mouse User Manual

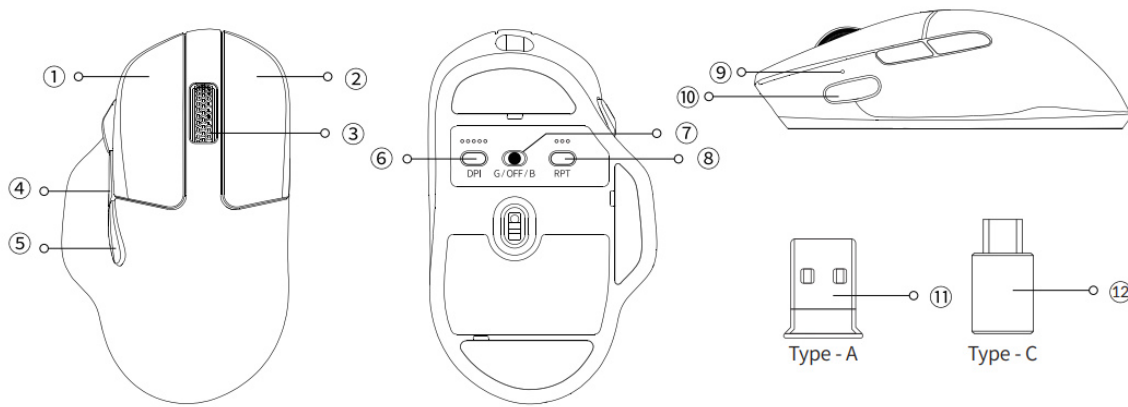
[Home](#) » [Keychron](#) » keychron Type-A M7 Wireless Mouse User Manual 



## Contents

- [1 Type-A M7 Wireless Mouse](#)
- [2 3 Modes of connection](#)
- [3 Bluetooth mode](#)
- [4 Status indicator](#)
- [5 Report Rate indicator](#)
- [6 How to factory reset](#)
- [7 Charging indicator explanation](#)
- [8 What's in the box](#)
- [9 Mouse specification](#)
- [10 Documents / Resources](#)
  - [10.1 References](#)
- [11 Related Posts](#)

## Type-A M7 Wireless Mouse



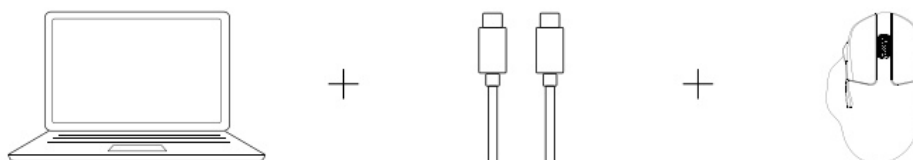
1. Left button
2. Right button
3. Middle wheel button
4. Forward button
5. Backward button
6. DPI button
7. Modes toggle
8. Report rate button
9. Mouse indicator
10. Macro Button
11. 4GHz Type – A receiver
12. 4GHz Type – C receiver

### 3 Modes of connection

#### Wired mode

1. When the mode switch is in “OFF” position, the mouse won’t respond if the cable is not connected.
2. Connect the cable to the TYPE-C port of the mouse and the USB port on the device. The mouse is ready to use while the indicator lights up.

When connected by cable, the mode will default to wired mode even if the toggle is in Bluetooth mode or 2.4GHz mode.



#### 2.4 GHz Mode

1. Switch to “G” mode (2.4GHz mode), and the mouse will automatically turn on 2.4GHz pairing. The mouse indicator will slowly flash green.
2. Find the 2.4GHz receiver and connect it to the device’s USB/Type-C port. Once successfully connected, the

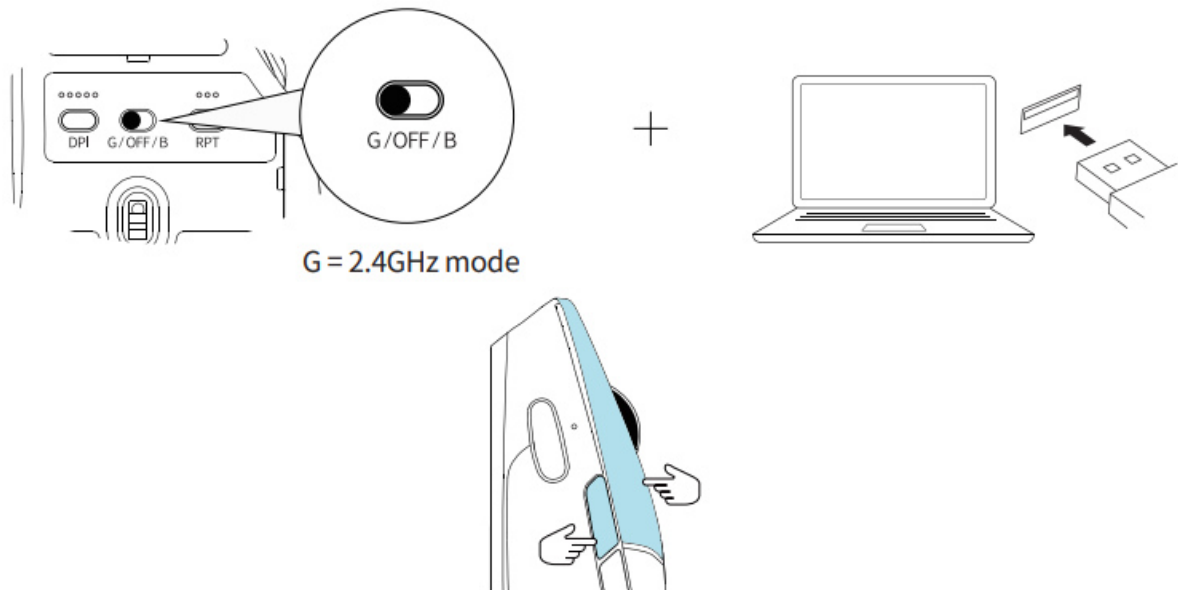
mouse indicator will turn green and stay on for 3 seconds before dimming off. The mouse is now ready for use.

3. In 2.4GHz pairing mode, the mouse indicator will slowly blink green for 3 minutes. If the mouse is not connected within 3 minutes, the indicator will turn off. If you need to reconnect, hold both the “Left button + Forward button” for 4 seconds to re-enter pairing mode.

If you need to repair the connection in 2.4GHz mode, please unplug the 2.4GHz receiver first. Then, hold both the “Left button +

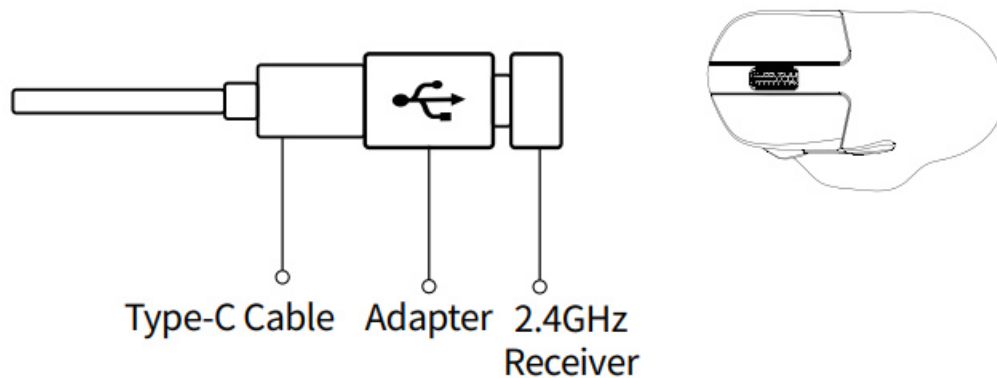
Forward button” for 4 seconds, wait for the green light indicator to start flashing, and plug the 2.4GHz receiver back in to complete the pairing process.

**Note:** It is recommended that when pairing the M7 in 2.4GHz mode, the mouse should be within 20cm of the receiver.



simultaneously hold for 4 seconds (to enter the forced pairing mode)

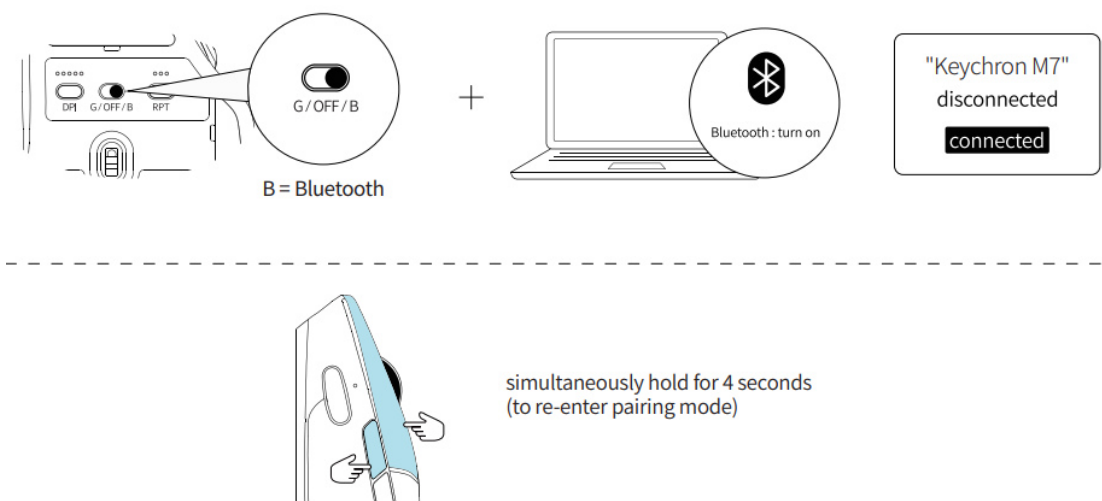
**Note:** For the best wireless experience, we recommend using the cable and putting the 2.4GHz receiver somewhere on your desk close to your mouse for a lower rate of latency and fewer signal interferences.



## Bluetooth mode

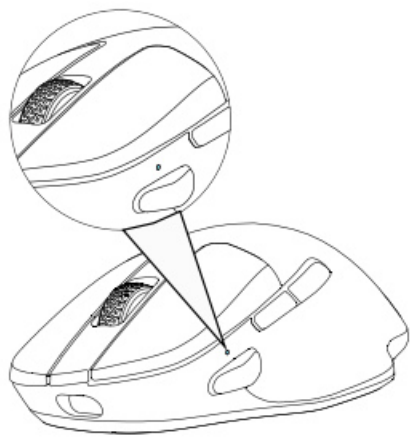
1. Switch to “B” Mode (Bluetooth), and the mouse will automatically turn on Bluetooth pairing mode. The mouse indicator will slowly flash blue.
2. Open the Bluetooth settings, search for a device named “Keychron M7”, then click “connect” to complete pairing.
3. When in Bluetooth pairing mode, the mouse indicator will slowly blink in blue for 3 minutes. If it’s not connected within 3 minutes, the mouse indicator will turn off. If you need to reconnect, you need to hold the “Left button + Forward button” for 4 seconds to re-enter pairing mode. The indicator will slowly blink blue.
4. If the M7 is in Bluetooth mode and needs to pair with a new device, hold both the “Left button + Forward button”

for 4 seconds and wait for the blue light to flash on. At this point, Bluetooth has re-entered pairing mode, and you can connect the new device to the M7.



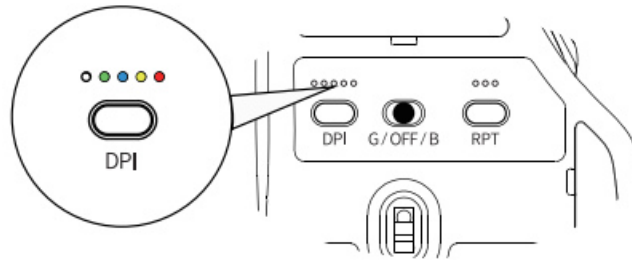
### Status indicator

2.4GHz Mode	*The mouse indicator slowly blinks green – Ready to be paired. *The mouse indicator quickly blinks green – Pairing with the previous device.
Bluetooth Mode	*The mouse indicator slowly blinks blue – Ready to be paired. *The mouse indicator quickly blinks blue – Pairing with the previous device.
Low Power	The mouse indicator will slowly blink red.



### DPI indicator

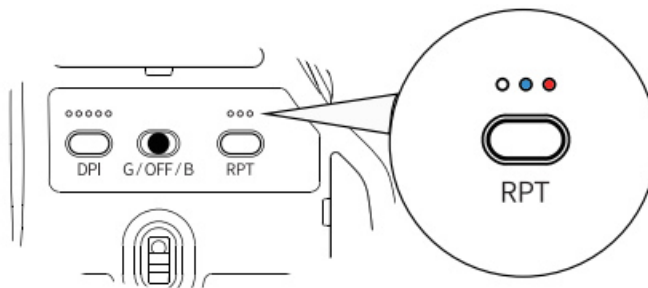
White light	400 DPI
Green light	800 DPI
Blue light	1600 DPI (default)
Yellow light	3200 DPI
Red light	5000 DPI



## Report Rate indicator

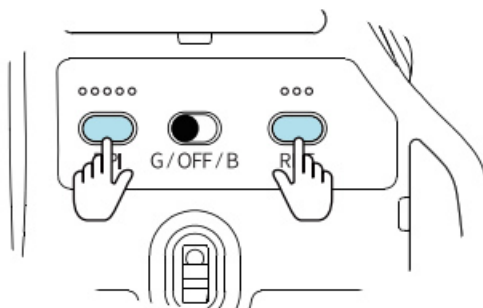
**\*Report Rate = Polling Rate**

Whitelight	125hz Default in Bluetooth mode)
Bluelight	500hz
Redlight	1000hz Default in wired & 2.4GHz mode)



## How to factory reset

Hold down both the “DPI” button and “Report Rate” button for 4 seconds, and all the LED lights on the mouse will blink. It will blink three times to indicate that the factory reset is successful.



simultaneously hold for 4 seconds (starts factory reset)

## Auto-Sleep mode

Auto-Sleep mode will not be activated when in wired mode. When in 2.4GHz mode or Bluetooth mode, the mouse will go to Auto-Sleep mode after 15 minutes of sitting idle to save the battery. Move or click the mouse to wake it up.

## Driver Software

The Keychron 7 mouse driver can be downloaded from [wikeychron.com](https://www.wikeychron.com). If the driver software can't connect to the mouse, please contact sales or technical support.

## Charging indicator explanation

Fully Charged	The mouse indicator i stay GREEN.
LowPower	"The mouse indicator will slowly blink RED.

- The mouse is compatible with all USB ports. For the best signal and charging speed, connecting to the USB3.0 port is recommended when charging or in use.
- If the mouse is connected by the USB Type – C cable when charging but not paired with any devices:
- The mouse indicator will stay RED when charging.
- The mouse indicator will stay GREEN when fully charged.

**Note:** The product supports up to 5V charging voltage and 300 mA charging current. We are not responsible for any problems caused by improper recharging.

## What's in the box

Type – C receiver x 1  
 User manual x 1  
 Mouse x 1  
 Extension Adapter x 1  
 Type – C Cable x 1 Type – A receiver x 1  
 Type – A to Type – C adapter x 1

## Mouse specification

Size: 127.7\*77.1\*40.5mm  
 Weight: 63 ± 3g  
 Report Rate(polling rate): 125(White) – 500(Blue) – 1000(Red)  
 Sensor: PixArt 3395  
 Resolution: 100 – 26000DPI  
 Mouse micro switches: Huano Micro Switch (80 million clicks life time)  
 2.4GHz / Bluetooth connection range: Approx 10m of open space  
 Battery capacity: 600mAh  
 Usage duration: 70 Hours  
 Recharge time: 2 Hours  
 Charging port: Type – C  
 Connection mode: 2.4GHz – Bluetooth – Wired  
 Device name: Keychron M7

Keychron, Inc.  
 Dover, DE 19901, United States  
 Find us at: <https://www.keychron.com>  
[Support@keychron.com](mailto:Support@keychron.com)



@keychron



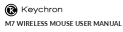
@keychron



@keychronMK

Designed by Keychron  
 Made in China

## Documents / Resources



[keychron Type-A M7 Wireless Mouse](#) [pdf] User Manual  
Type-A, Type-C, Type-A M7 Wireless Mouse, Type-A, M7 Wireless Mouse, Wireless Mouse, Mo  
use

## References

- [User Manual](#)

[Manuals+](#), [Privacy Policy](#)

This website is an independent publication and is neither affiliated with nor endorsed by any of the trademark owners. The "Bluetooth®" word mark and logos are registered trademarks owned by Bluetooth SIG, Inc. The "Wi-Fi®" word mark and logos are registered trademarks owned by the Wi-Fi Alliance. Any use of these marks on this website does not imply any affiliation with or endorsement.