



Key digital KD-IP922DEC-II 4K AV Over IP Encoder User Guide

[Home](#) » [Key Digital](#) » Key digital KD-IP922DEC-II 4K AV Over IP Encoder User Guide 

Contents

- 1 Key digital KD-IP922DEC-II 4K AV Over IP Encoder
- 2 Product Information
- 3 Product Usage Instructions
- 4 Instructions Steps
- 5 OPTIONAL SETTINGS
- 6 Documents / Resources
 - 6.1 References



Key digital KD-IP922DEC-II 4K AV Over IP Encoder



Product Information

The Key Digital 4K AV over IP Encoder / Decoder System is a high-quality audiovisual system that allows for the transmission and distribution of 4K video and audio signals over an IP network. The system consists of Encoders (ENCs) and Decoders (DECs) that are pre-configured to your specifications.

Product Usage Instructions

1. Connect all new ENC's and DEC's to the network. Ensure that the pre-existing ENC's and DEC's are not shut down. Wait for approximately 2 minutes for the equipment to boot up.
2. Connect your Windows PC to the network using an Ethernet cable. Set a unique static IP address for your PC, matching the first 3 octets of the ENC's and DEC's IP addresses. Download KDMS Pro (QR 1), extract the zip file, and open the KDMS_Pro application.
Important: Do not remove the application from the folder. Choose SCAN > NETWORK SCAN in KDMS Pro. The application will automatically detect your system, and the new equipment should appear at the bottom of the scan as "OTHER 4K AVOIP DEVICES".
3. In the AVOIP SYSTEM tab of KDMS Pro, click on "BUILD FROM SCAN". Provide a name for the new system, then click "OK". Wait for 5-20 seconds as the system file populates. Verify that all devices are present in the IP SYSTEM window.
4. To save a copy of the switch file to your PC, click on the "SAVE AS" button. Then, click on "LOAD TO UNITS" and select "START LOAD".

Optional Settings:

- **A. Source & Display Control:** You may set the Source & Display Control settings as desired (QR 2).
- **B. Video Wall:** If using a video wall, the Video Wall settings must be re-applied with each system load (QR 3).

Your Encoders (ENC's) and Decoders (DEC's) are pre-configured to your specification (see attached).

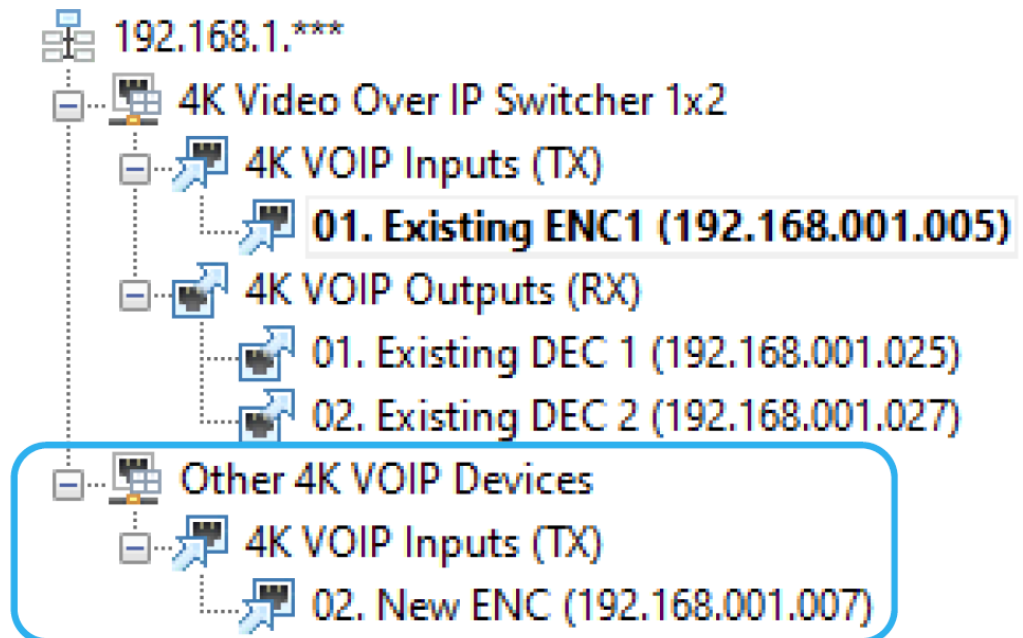
Instructions Steps

Follow these instructions for a 1, 2, 3 AV over IP experience:

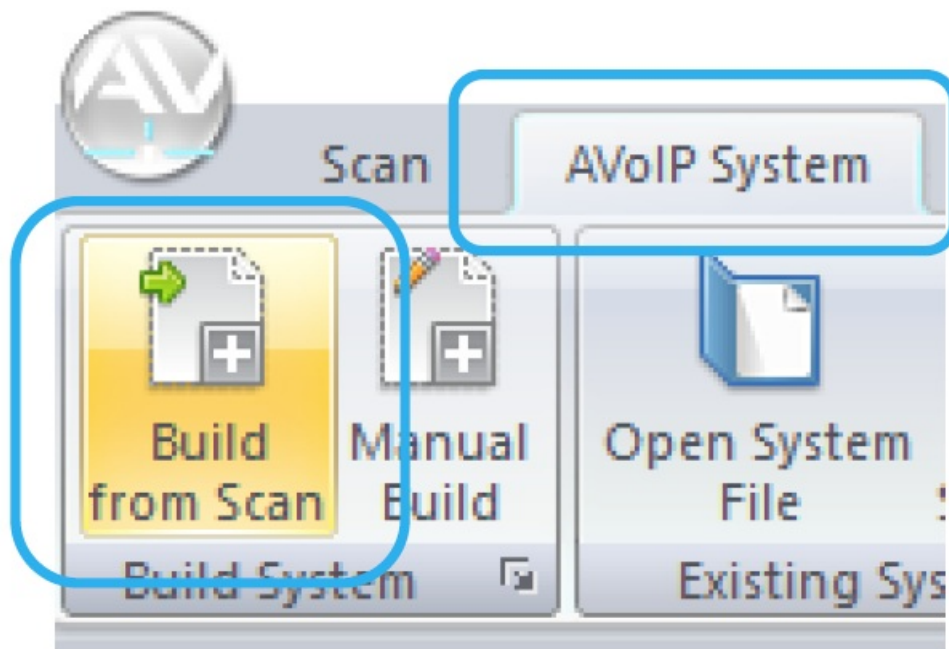


KDMS Pro

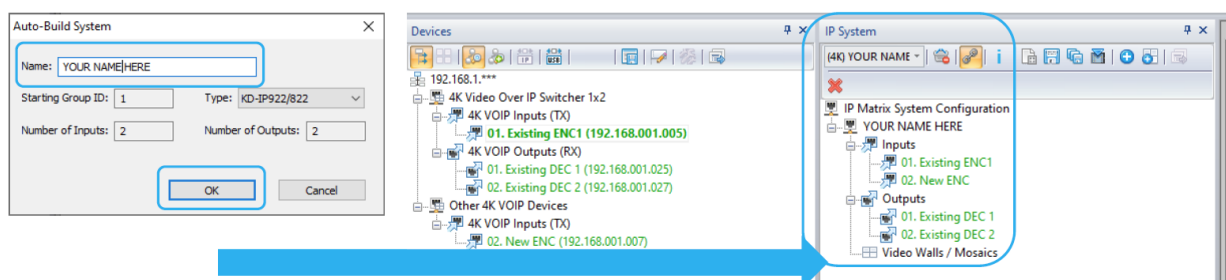
1. Connect all new ENC's and DEC's to the network. Do not shut down the pre-existing ENC's and DEC's
 1. Wait 2 minutes for the equipment to boot up
2. Connect Window's PC into the Network with an ethernet cable
 1. Set a unique static IP address to your PC. Match the first 3 octets of the ENC's and DEC's
 2. Download KDMS Pro (QR 1). Extract zip file. Open the KDMS_Pro application.
 1. **IMPORTANT:** Do not remove the application from the folder



3. Choose SCAN > NETWORK SCAN and KDMS Pro will find your system
4. The new equipment should appear at the bottom of the scan as OTHER 4K AVOIP DEVICES



3. In the AVOIP SYSTEM tab, click BUILD FROM SCAN
 1. Name the new system, then click OK. Wait for 5-20s as the system file populates
 2. Verify all devices are present in IP SYSETM window



4. Click the SAVE AS button to save a copy of the switch file to the PC.


System Configuration File Loading

Device: All Devices ▼

☐ USB ☐ From Selected device to the End

IP Address: 192.168.0.239 IP Port: 23

Start Load Cancel

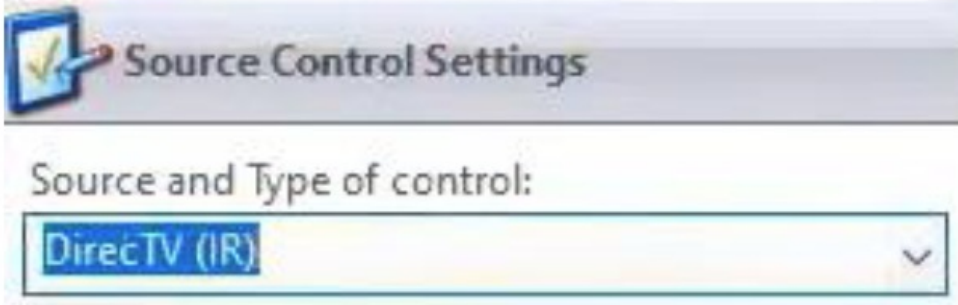


Terminate OK

5. Click LOAD TO UNITS, then START LOAD



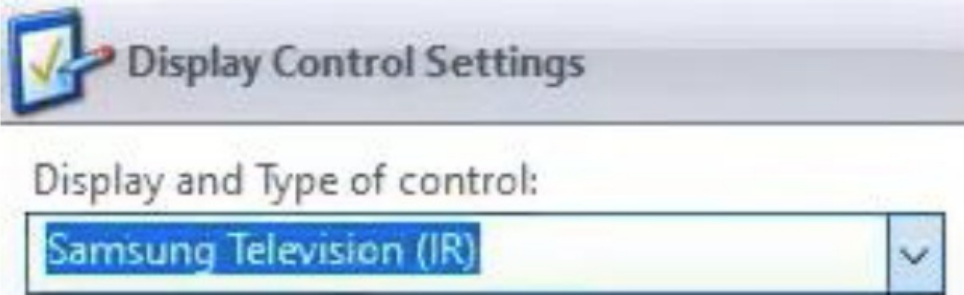
OPTIONAL SETTINGS



Source Control Settings

Source and Type of control:

DirecTV (IR) ▼



Display Control Settings

Display and Type of control:

Samsung Television (IR) ▼

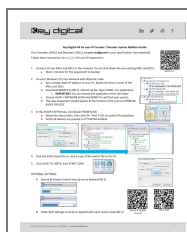
- **A.** Source & Display Control may be set as desired (QR 2)
- **B.** Video Wall settings must be re-applied with each system load (QR 3)

521 East 3rd Street Mt. Vernon, NY 10553



www.keydigital.com

Documents / Resources



[Key digital KD-IP922DEC-II 4K AV Over IP Encoder](#) [pdf] User Guide
KD-IP922DEC-II, KD-IP922DEC-II 4K AV Over IP Encoder, 4K AV Over IP Encoder, AV Over IP Encoder, Over IP Encoder, IP Encoder, Encoder

References

- keydigital.com

Manuals+.