

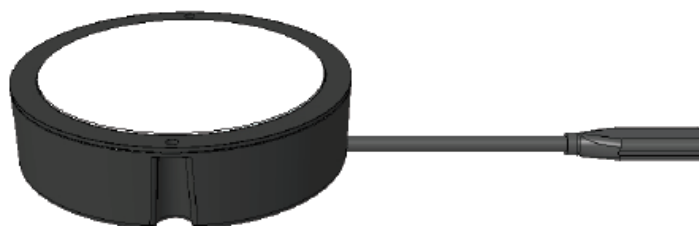


Contents [[hide](#)]

- [1 KEW LABS UTS-2 Invisible Fast Wireless Charger](#)
- [2 Product Usage Instructions](#)
- [3 In the box](#)
- [4 Check before installation](#)
- [5 Installation Video Guide](#)
- [6 User instructions](#)
- [7 SPECIFICATIONS](#)
- [8 Warranty](#)
- [9 Safety instruction](#)
- [10 FCC Statements](#)
- [11 FAQs](#)
- [12 Documents / Resources](#)
 - [12.1 References](#)



KEW LABS UTS-2 Invisible Fast Wireless Charger



Product Specifications

- Product Name: UTS-2 Invisible Fast Wireless Charger
- Brand: KEW LABS
- Package Contents:
 1. 1 x UTS-2 charger
 2. 2 x Stickers (9cm + 8cm)
 3. Assorted Screws
 4. Cable Management Clips
 5. User Instructions

Product Usage Instructions

Installation Guide

Before starting the installation, ensure to watch the installation video guide by scanning the QR code provided or visiting www.kewlabstech.com/uts-2 install.

Check before Installation

Ensure that the area where you plan to install the charger, e.g., small drawers, is suitable for the installation.

User Instructions

1. Place your phone face up, aligning the center of your phone to the center of the sticker.
2. The UTS-2 will make an audio confirmation beep confirming that charging has started. If you do not hear this beep, please realign your phone more centrally or lift it off, wait 4 seconds, and reattempt.
3. **WARNING:** Unless you hear the confirmation audio beep, your phone has not started charging, even if your phone shows the battery charging signal.

Troubleshooting and FAQs

Why is my phone not charging?

Please ensure:

- Your phone is aligned correctly with the sticker.

- The audio confirmation beep is heard after placing the phone to charge.

Why does the audio confirmation beep take different amounts of time?

The time taken for the beep varies based on the accurate positioning of your device. Recalibrate if necessary for better alignment.

Why does my phone feel hot?

Increased phone temperatures during wireless charging are normal. Ensure correct alignment and try again if your phone feels excessively hot.

Why do the charging speeds vary?

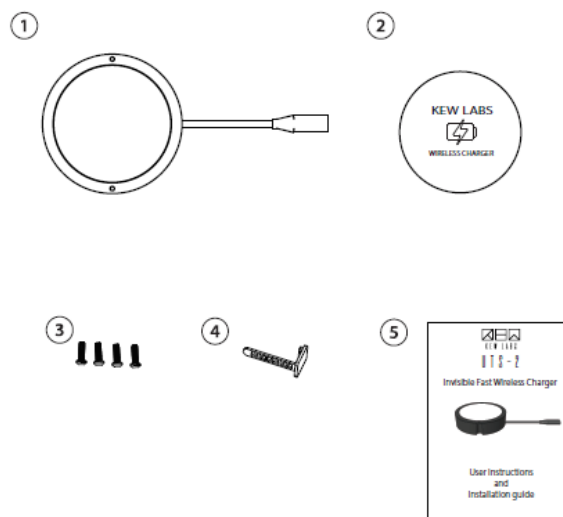
Different phones have different battery sizes, leading to varying charging times. Charging speeds may slow at 80% on IOS models due to software requirements; try turning off 'Optimised Battery Charging' in settings.

What does the flashing LED indicator on the charger mean?

A flashing LED indicates an electrical system fault. Contact support for assistance.

In the box

1. UTS – 2 charger
2. 9cm + 8cm stickers
3. Screws
4. Cable management clips
5. User instructions



Check before installation

- If you have a phone case please ensure it is flat and does not contain any metal, center magnets, card holders, pop sockets or kickstands.
- Ensure the surface under your table is flat
- Prepare a pencil and screwdriver if needed
- Check installation area is within 1.5m(59.05') of your power point
- Not recommended to install in areas with low air circulation e. g. small drawers

Installation Video Guide

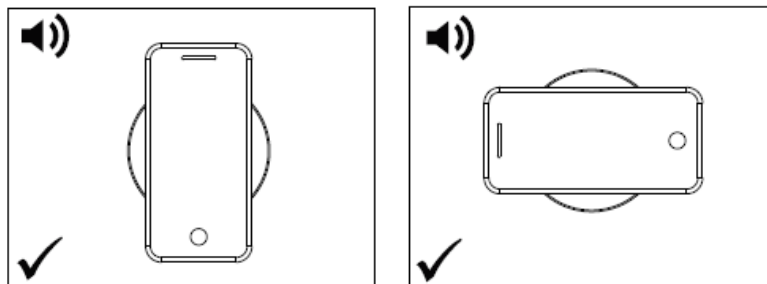
To watch the installation guide, please scan the QR code below or visit [www.kewlabstech.com/uts-2 install](http://www.kewlabstech.com/uts-2%20install)



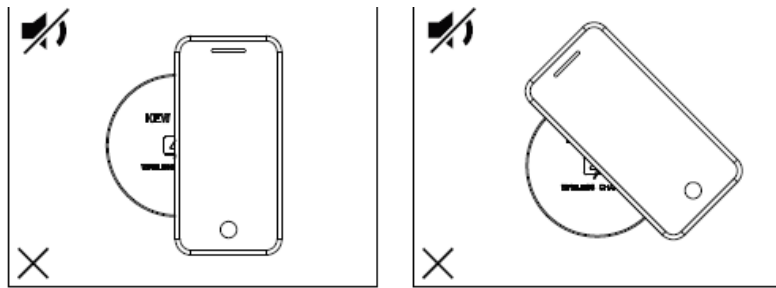
Installation video QR link

User instructions

1. Place your phone face up aligning the center of your phone to the center of the sticker.



2. The UTS-2 will make an audio confirmation beep confirming that charging has started. If you do not hear this beep, please realign your phone more centrally or lift it off, wait 4 seconds and reattempt.



WARNING

UNLESS YOU HEAR THE CONFIRMATION AUDIO BEEP YOUR PHONE HAS NOT STARTED CHARGING EVEN IF YOUR PHONE SHOWS THE BATTERY CHARGING SIGNAL

SPECIFICATIONS

- **Fast Charging Speeds**

9W Fast Charge

- **Charging Distance**

8mm ~ 12mm (0.32' ~ 0.47')

- **Normal Charging Speed**

Qi enabled Google , Huawei , Sony , Nokia , LG , Xiaomi

5W Charge

- **Charges Through**

All non-metalic surfaces wood , plastic , granite , quartz , marble glass

- **Product Dimensions**

Ø99mm x 26mm (3.89' x 1.02')




- **Power cable length**

1.5m (59.05')

- **Input : USB-C PD20W**

12V / 1.67A

LED Indication

Status	LED
Power Off	Off 
Power On	On 
System Fault (OTP,OCP,UVPOVP, Phone Protect Mode)	Blink 

System Fault

- Under Voltage Protect (UVP) , Over Voltage Protect (OVP) , Over Current Protect (OCP) : Proper power is not reaching the charger. Can be caused by incorrect adaptor usage, overloaded multi-plug adaptor set up, improper table thickness setting, metal objects placed very near to the installation of charger.
- Over Temp Protect (OTP) : The charger is installed at the low air circulation area.
- Phone Protect Mode : Action when the phone is positioned closer than the Charging distance (under 8mm)

System Fault can be used again after removing cause of occurrence, turning power off and on.

Buzzer Indication

Status	Buzzer
Power Transfer Start	Beep
Change Tect switch (Press long time 3 sec)	Beep : Buzzer Off Beep-Beep : Buzzer On (at Power Transfer Start)

Warranty

- KEW LABS warrants to the purchaser that your product shall be free from defects in material and workmanship for the length of time, identified on your product package and/or at www.kewlabstech.com under the warranty specification for your product, from the date of purchase. This warranty is non transferable and is limited to original

purchaser and the country it was purchased in.

- This warranty does not cover problems or damage resulting from (1) accident, abuse, misapplication, or any unauthorized repair, modification or disassembly; (2) improper operation or maintenance, usage not in accordance with product instructions or connection to improper voltage supply; (3) use of non Kew Labs consumables, such as replacement batteries, (4) lost parts that were originally supplied with by Kew Labs; (5) normal wear and tear.
- This limited warranty does not, under any circumstances, cover the replacement of or reimbursement for any electronic device or personal property that is not a KEW LABS product.

CUSTOMER SERVICE

Please don't hesitate to contact us at support@kewlabstech.com for any technical assistance, warranty claim or just any feedback you may have relating to this product. Otherwise please visit our website www.kewlabstech.com for more FAQs and more product news.

Safety instruction

- Avoid contact with water and do not submerge
- Avoid extreme temperatures
- Avoid dropping.
- Use original or certified cables.
- Do not clean with corrosive substances or oils.
- Do not disassemble.
- This product is in compliance with the radio interference requirements of the European Community.
- Electronic adapters are recyclable waste and must not be disposed of in the household waste.

Dispose of this equipment using a designated collection point for the recycling of electrical and electronic equipment.

FCC Statements

This device complies with Part 15 of the FCC Rules. Operation is subject to the following two conditions:

1. This device may not cause harmful interference.
2. This device must accept any interference received, including interference that may cause undesired operation.

Changes or modifications not expressly approved by the party responsible for compliance could void the user's authority to operate the equipment.

NOTE: This equipment has been tested and found to comply with the limits for a Class B digital device, pursuant to Part 15 of the FCC Rules.

These limits are designed to provide reasonable protection against harmful interference in a residential installation.

This equipment generates uses and can radiate radio frequency energy and, if not installed and used in accordance with the instructions, may cause harmful interference to radio communications. However, there is no guarantee that interference will not occur in a particular installation. If this equipment does cause harmful interference to radio or television reception, which can be determined by turning the equipment off and on, the user is encouraged to try to correct the interference by one or more of the following measures:

1. Reorient or relocate the receiving antenna.
2. Increase the separation between the equipment and receiver.
3. Connect the equipment into an outlet on a circuit different from that to which the receiver is connected.
4. Consult the dealer or an experienced radio/TV technician for help.

RF warning statement:

The device has been evaluated to meet general RF exposure requirement. The device can be used in portable exposure condition without restriction.

FAQs

What does the flashing LED indicator on the charger mean?

A flashing LED light is an electrical system fault error (see in LED indication section below for more detail). For more assistance please contact support@kewlabstech.com or visit kewlabstech.com for extended product FAQs.

Why is my phone not charging?

Ensure correct alignment and audio confirmation beep.

Why does my phone feel hot?

Increased temperatures are normal; ensure correct alignment.

Why do the charging speeds vary?

Varying battery sizes and software requirements affect charging speeds.

Why is my phone not charging?

Please ensure : *If you have a phone case, it is flat and does not contain any metal, centrally located magnets, card holders, pop sockets or kickstands *Ensure your phone is aligned as centrally as possible *Check if your phone is Qi wirelessly charging enabled

Why does the audio confirmation beep take different amounts of time?

The time taken to beep is determined by how accurately you have positioned your device. A center position will beep faster than a misaligned placement or at greater distances I.e. Thicker cases can also cause longer recognition time and therefore longer time to beep. Recalibrate if necessary to improve sticker position or center your device on the sticker more accurately to get a better alignment.

Why does my phone feel hot?

Increased phone temperatures during wireless charging are normal especially during longer charging sessions. Our IPC™ technology is designed to minimise phone heating however, if your phone is hotter than usual, please ensure you have aligned it correctly and try again.

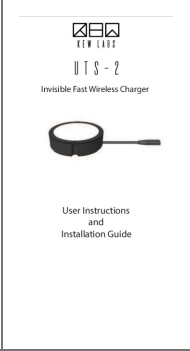
Can I switch the audio confirmation off?

Yes – if you would prefer or need to use the charger without the audio confirmation buzzer system, you are able to turn it off. However, without the audio confirmation, your phone is not necessarily charging just through the charging indication on your screen which is why the audio buzzer system was initially created. If you choose to use the device without the buzzer, please ensure your alignment and setup is correct and accurate. To disable the buzzer. Press the tact switch for a long time (3 seconds) to disable the audio confirmation buzzer. Repeat again to disable or enable depending on preference.

Why do the charging speeds vary?

Different phones have different battery sizes and therefore take different times to charge, with larger batteries taking longer. Charging speeds may also slow at ~80% in IOS models due to Apple software requirements designed to limit battery deterioration during wireless charging. The UTS-2 recognises IOS charging signals and corresponds by adapting charging speeds until your device requests more power. please try turning OFF 'Optimised Battery Charging' in your 'Settings'.

Documents / Resources

	KEW LABS UTS-2 Invisible Fast Wireless Charger [pdf] Installation Guide UTS-2, 2AWLH-UTS-2, 2AWLHUTS2, UTS-2 Invisible Fast Wireless Charger, UTS-2, Invisible Fast Wireless Charger, Fast Wireless Charger, Wireless Charger, Charger
----------------------------------------------------------------------------------	-----------------------------------------------------------------------------------------------------------------------------------------------------------------------------------------------------------------------------------------------------------

References

- [User Manual](#)

KEW
LABS

2AWLH-UTS-2, 2AWLHUTS2, charger, Fast Wireless Charger, Invisible Fast Wireless Charger, KEW LABS, UTS-2, UTS-2 Invisible Fast Wireless Charger, wireless charger

Leave a comment

Your email address will not be published. Required fields are marked *

Comment *

Name

Email

Website

☐ Save my name, email, and website in this browser for the next time I comment.

Post Comment

Search:

e.g. whirlpool wrf535swhz

Search

[Manuals+](#) | [Upload](#) | [Deep Search](#) | [Privacy Policy](#) | [@manuals.plus](#) | [YouTube](#)

This website is an independent publication and is neither affiliated with nor endorsed by any of the trademark owners. The "Bluetooth®" word mark and logos are registered trademarks owned by Bluetooth SIG, Inc. The "Wi-Fi®" word mark and logos are registered trademarks owned by the Wi-Fi Alliance. Any use of these marks on this website does not imply any affiliation with or endorsement.