



[Home](#) » [Kevmor](#) » **KEVMOR TS300HA Hepa Dust Extractor Instruction Manual** 



TS300HA HEPA DUST EXTRACTOR OPERATORS MANUAL



Contents [[hide](#)]

[1 TS300HA Hepa Dust Extractor](#)

[2 SAFETY INSTRUCTIONS](#)

[3 UNPACKING](#)

[4 FUNCTION](#)

[5 HEIGHT ADJUSTMENT](#)

[6 FILTER CLEANING](#)

[7 DUST STORAGE SYSTEM](#)

[8 FILTER CHANGE](#)

[9 SERVICE](#)

[10 WARRANTY](#)

[11 PROBLEM SOLVING](#)

[12 TECHNICAL DATA](#)

[13 Documents / Resources](#)

[13.1 References](#)

TS300HA Hepa Dust Extractor

INTRODUCTION

This Industrial Vacuum Cleaner is a high-quality product based on the newest state-of-the-art technology. We hope that this device will be to your satisfaction and meet your expectations. We are continuously striving to improve our products in our product segment and will continue to supply the market with new equipment.

NOTICE!

1. These instructions are only for TS300HA Dust Extractors.
2. The TS300HA Dust Extractors are designed to clean construction areas and be connected to small electrical machines such as drills, grinders, etc. The machine is suitable for picking up dry, non-flammable dust and debris in an indoor environment. It is not suitable for picking up liquids.
3. Please pay particular attention to the safety regulations and safety instructions

4. Read the complete instruction manual before using.
5. All spare parts and accessories used with this device must be those specified by.
6. Check before and after use that all the switches are in the OFF position.

Environmental protection

The packaging material can be recycled. Please do not throw the packaging material into household waste; please send it for recycling.

Old devices contain valuable materials that can be recycled; these should be sent for recycling. Batteries, oil, and similar substances must not enter the environment. Please dispose of your old devices using appropriate collection systems.

SAFETY INSTRUCTIONS

When using an electrical appliance, basic precautions should always be followed, including the following:

WARNING - To reduce the risk of fire, electric shock, or injury:

- Cables damaged through crushing or splitting can be dangerous if used and should be replaced immediately. Risk of personal injury.
- Make sure the assembly area is firm, so the dust extractor does not tip over. Risk of personal and material injury.
- Risk of pinching when handling the toggle fasteners.
- The machine must not be used in environments where explosive gases may be present. Serious risk of explosion.
- Improper connection of the equipment-grounding conductor can result in a risk of electrical shock. Check with a qualified electrician or service person if you are in doubt as to whether the outlet is properly grounded. Do not modify the plug provided with the machine. If it will not fit the outlet. Have a proper outlet installed by a qualified electrician.
- Before using the machine, make sure that the power & voltage correspond with the voltage shown on the machine's rating plate.
- Do not leave the machine when plugged in. Unplug the cord from the outlet

when not in use and before cleaning or servicing the machine.

- Do not use outdoors or on a wet surface; this machine is for indoor and dry use only.
- Do not allow it to be used as a toy. Close attention is necessary when used by or near children.
- Use only as described in this manual. Use only the manufacturer's recommended attachments.
- Operators shall be adequately instructed on the use of the machine
- This machine is not intended for use by persons (including children) with reduced physical, sensory, or mental capabilities, or a lack of experience and knowledge.
- Do not use with a damaged cord or plug. If the machine is not working as it should, has been dropped, damaged, left outdoors, or dropped in water. Make sure it is repaired by a qualified person.
- Do not pull or carry by cord, use cord as a handle, close a door on the cord, or pull the cord around sharp edges or corners. Do not run the machine over the cord. Keep the cord away from heated surfaces.
- Do not unplug by pulling on the cord. To unplug, grasp the plug. Not the cord.
- Do not handle the plug or machine with wet hands.
- Regularly inspect the cord and plug for damage. If the cord is damaged, it must be replaced by a qualified person in order to avoid a hazard.
- Do not put any object into openings. Do not use with any opening blocked (except during the filter cleaning procedure). Keep free of dust, hair, and anything that may reduce airflow.
- Keep hair, loose clothing, fingers, and all parts of the body away from openings and moving parts.
- Turn off all controls before unplugging.
- Do not use to pick up flammable or combustible liquids, such as gasoline, or use in areas where they may be present.
- Do not pick up any type of liquids.
- Do not pick up anything that is burning or smoking, such as cigarettes, matches, or hot ashes.
- Use extra care when cleaning on stairs.
- Do not use without a dust bag and/or filters in place. Replace the collection

system and/or filters as described in the manual.

- If using an extension cord, make sure the cord rating is suitable for this machine.
- Do not modify the machine from its original design.
- Keep children and unauthorized persons away from the machine when in use.
- All repairs must be performed by a qualified service person. Use only manufacturer-supplied or equivalent replacement parts.
- Do not expose the machine to rain or moisture. Store indoors only.
- Connect to a properly grounded outlet only. See grounding instructions.

THERMAL PROTECTION

The dust extractor is equipped with a safety thermal protector to prevent the motor from overheating. Should the thermal protector activate, turn off the machine, unplug the power cord, and check for a full dust bag, vacuum hose clog, or filter blockage. It may take up to 45 minutes for the thermal protector to reset.

GROUNDING INSTRUCTION

The dust extractor must be grounded. If it should malfunction or break down, grounding provides a path of least resistance for electric current to reduce the risk of electric shock. The dust extractor is equipped with a cord having an equipment-grounding conductor and grounding plug. The plug must be inserted into an appropriate outlet that is properly installed and grounded in accordance with all local codes and ordinances.

SAFETY LABEL

The following label appears in front of the machine. Check all the details stated on the label before using. Replace the label if it is missing, damaged, or illegible. Failure to follow this warning label may result in fire, electric shock, or injury.



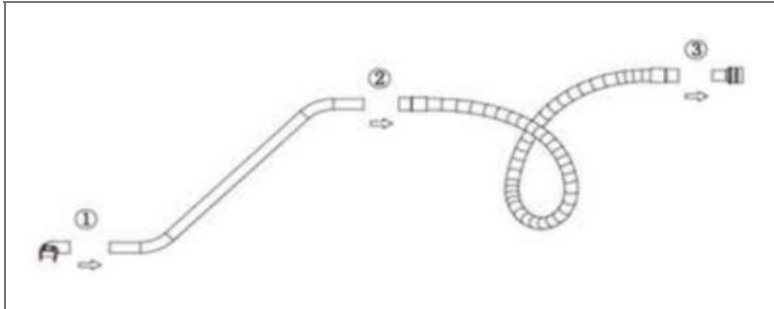
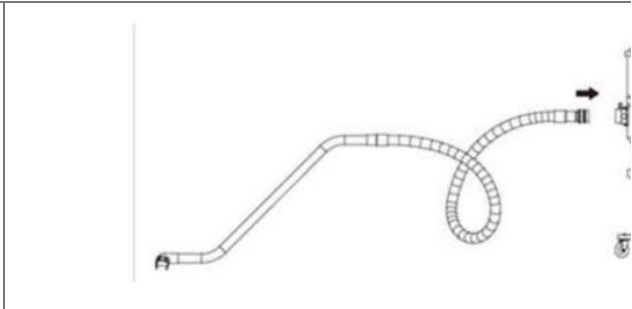
UNPACKING

When unpacking the machine, please check that the following accessories are included:

- ☒ The hose with end fittings
- ☒ Wand
- ☒ Floor brush

If any of the above-mentioned parts are missing, please contact your local distributor or our sales representative. For models that do not already have the front casters assembled due to packaging limitations. Assemble the front casters using the bolt or nut and washer that are included in the package, depending on your application. Protect the environment: Please dispose of packaging materials and used machine components in an environmentally safe way according to local disposal regulations. Always remember to recycle.

To assemble the accessories:

	
<p>1. Connect the floor brush and wand</p> <p>3. Connect the hose and adaptor</p>	<p>2. Connect the Wand and hose</p> <p>4. Connect the accessories kit and machine</p>

Note: Don't roll or twist the hose when working.

FUNCTION

The machine is designed for vacuuming and separating dry, non-combustible dust with an explosion limit value of 0.1mg/m³.

The dust extractor is started by the switch. All the switches can operate independently.

Type	Models with Jet pulse filter cleaning
Red switch 2 step	0: Motor off, 1: Motor on

Notice!!!

Before connecting the power, please confirm the voltage is consistent with the label on the machine.

- Make sure the electric plug and socket match
- Make sure the hose and inlet match
- Connect the accessories and the hose end

Notice!!!

- Turn on the machine until the motor stops working completely.
- Please disconnect the plug when the machine is not working.

Dust-laden air is then sucked through the inlet valve at high speed via the suction hose.

The air is slowed down by the cyclone, and coarse dust particles are separated out, partly by centrifugal force and partly by gravity. Air and finer particles then pass through the double filter system, where separation is made. The machine is designed for filter cleaning by reverse air pulse.

The separated dust accumulates in the cyclone until the machine is switched off, when it drops through the bottom flap into the plastic bag. The filter cleaning process is not completed before it is clear that the dust inside the tank has fallen into the collection bag. In some extreme cases, the adhesive ability of the dust must be broken manually. This can be done by hitting the dust through the bag or tapping the tank using, e.g., a rubber hammer.

HEIGHT ADJUSTMENT

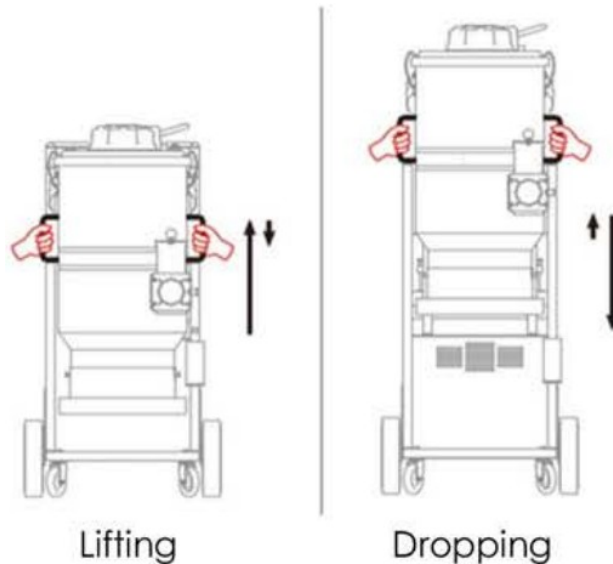
TS300HA UPDATED VERSION WITH HEIGHT ADJUSTMENT SYSTEM:

Lifting operating:

Grip the 2 handles on the barrel, lift to the top, and then loosen the grip slowly.

Dropping operating:

Grip the 2 handles on the barrel, lift to the top, hold for one second, then drop it down to the bottom.

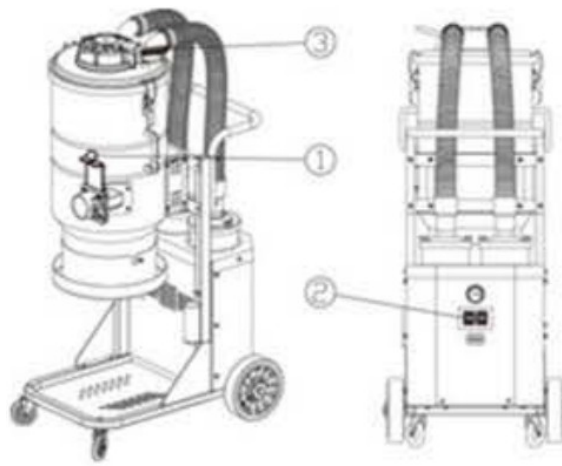


FILTER CLEANING

The filter must be cleaned from time to time. This must be done before changing the bag collection system and should also be done when work is completed or when there is poor suction.

Procedure:

1. Push down the damper, cover the inlet.
2. Turn on the machine and wait 3 seconds, let the machine build up vacuum.
3. Quickly push down on the key and wait 3 seconds.
4. Repeat the procedure five times.
5. Turn off the motor and wait until it stops completely, then uncover the inlet.



!!! It is important to let the machine rebuild the vacuum in between every repetition.

If suction remains poor, the pre-filter needs to be replaced. If suction still remains poor afterwards, the HEPA filters need to be replaced. See instructions in chapter 6.

FILTER CHANGE.

DUST STORAGE SYSTEM

The dust extractors are mainly equipped with a continuous folding bagging system for effective dust storage or a regular plastic bag system, depending on the model. The continuous bag is a 20 m-long plastic tube that will be divided into plastic bags using the zip ties attached to the machine.

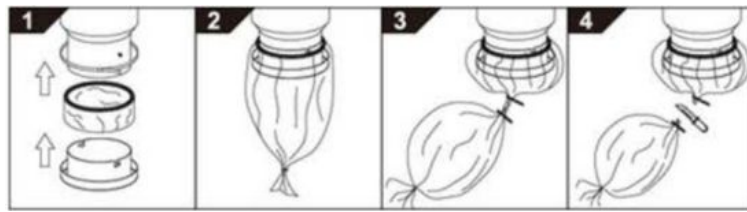
To assemble a new continuous bag:

Release the belt holding the last bag. Remove the holder, put in a new bag & pull out the inner end upwards. Assemble the holder onto the machine and strap the opening facing upwards with the belt. Pull down the outside end and close it using a zip tie.

All dust extractors can be used with continuous folding dust bags for single use. Also, all models can be fitted with the continuous bag system.

Only change the continuous bag or the regular bag after the filter cleaning cycle has been completed.

To operate the continuous bag:



1. Assemble the continuous bag, and turn on the machine
2. Turn off the machine, and the dust will drop down into the bags.
3. Use a nylon tie to seal the bag
4. Cut the bag

FILTER CHANGE

Risk of dust dispersion – Use personal safety equipment. Unhealthy dust can be spread during a filter change. Accordingly, the user should wear protective glasses, protective gloves, and a breathing mask conforming to protection class FFP3.



WARNING

Remember to switch off the machine and pull the plug out of the outlet before servicing.

Pre-filter

Loosen the 3 clamps and remove the top. Take the bag from the new filter. Lift out the filter and place it gently in a plastic bag. This bag must be properly disposed. Insert a new filter.

Important:

If you are removing the Pre-filter in order to clean it. Hitting the filter with force or the use of compressed air will destroy the filter. It can handle water, but high-pressure water cleaning will destroy it.

HEPA Filter

Loosen the two nuts on each filter cover cap. Carefully lift the filter into a clean

plastic bag; use the bag from the new filter. This bag must be properly disposed of. Insert a new filter in reverse order.

Important:

HEPA filters can't be cleaned; trying this might destroy them. When installing the replacement filter, make sure not to touch the inside of the filter. Any kind of force/damage on the inside of the filter media will destroy the new filter.

SERVICE

- When cleaning and servicing the machine, you must switch off the machine and remove the plug from the outlet.
- Avoid cleaning with a high-pressure cleaner. If necessary, do not direct at the openings on the machine, especially the opening for cooling air.
- Before moving the machine from the work area, the machine must be cleaned.
- All other equipment must be regarded as contaminated and be treated thereafter.
- If possible, use a suitable room.
- Proper personnel protective equipment must be used. Dust can be spread when the coarse filter and the absolute filter are replaced, which can be hazardous to health.
- Accordingly, the user should wear protective glasses, protective gloves, and a breathing mask conforming to protection class FFP3.
- All parts that are contaminated after service must be properly disposed of in plastic bags according to all regulations.
- If the machine has to be used for other purposes, it is extremely important that the machine is cleaned to avoid the spread of hazardous dust.
- Do not puncture the HEPA filter. Risk of dust dispersion.

WARRANTY

All devices and accessories have a 12-month factory warranty, counting from the manufacturing date on the machine. Do not attempt to repair the suction apparatus without the consent of the manufacturer. The warranty does not

cover defects that are the result of normal wear and tear, negligence, defective use, unauthorised repair, or the suction apparatus being connected to the incorrect voltage.

In the event of any complaint, the suction apparatus or an agreed part of it must be returned to us or our authorised representative for warranty examination and for any warranty repair or replacement.

PROBLEM SOLVING

The dust extractors are designed and manufactured for severe environments and tasks, but the user must note that the machine must be protected from knocks and blows. Filter, seals, attachments, and connections are carefully adapted and selected with regard to the operator's work environment. Therefore, the operator and service personnel must treat the machine with care in order for it to work correctly for many years.

Issue	Cause	Solution
The motor doesn't start	No Power	Plug in the machine
	Cable defective	Replace cable
	Switch defective	Replace switch
Motor stops immediately after starting	Shortcut in cable/machine	Order service
Motor runs, but there is no suction	Hose not connected	Connect hose
	Hose clogged/blocked	Clean hose
	No dust collection bag	Fit a dust collection system
Motor runs, but poor suction	Hole in the hose	Replace hose
	Filter clogged	Clean filter/Replace filter
	Loose top cover	Adjust

	Defective gaskets	Replace affected gaskets
Dust blown from the motor	Wrongly assembled or damaged filter system	Adjust/Replace fitters
Abnormal noise		Order service



Notice!!!

Any other problem, please contact the supplier

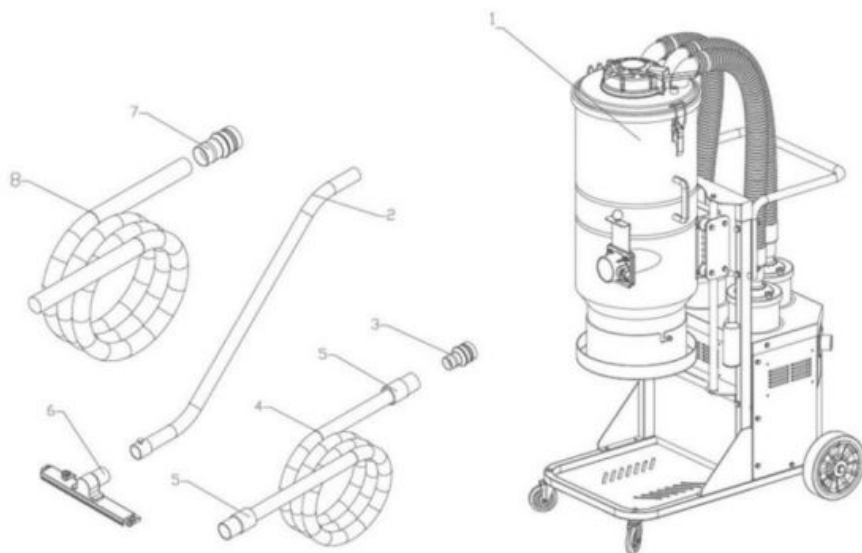
TECHNICAL DATA

Data	Unit	TS300HA
Voltage	V	220-240V
Power (max)	KW	3.6
	HP	5.1
Current (UL)	A	14.4
Airflow (max)	m ³ /h	600
	cfm	354
Vacuum (max) Water Lift (inch)	mbar	240
	inch	100
Main hose	Metric (mm)	7.5m x D50
	USCS (inch)	24.6' x 2"
Inlet	Metric (mm)	70
	USCS (inch)	2.8"
Pre filter EN 779-F8	% @ 1µm	99.5

Pre-filter area	Metric (m ²)	4.5
	USCS (ft ²)	48
HEPA filter EN 1833-H13	% @0.3µm	99.99
H13 HEPA filter area	Metric (m ²)	3.6
	USCS (ft ²)	39
Dust collection system	Type	Continuous folding bag
Dimensions (L*W*H)	Metric (mm)	630 x 840 x 1470
	USCS (inch)	22.4 x 32 x 58
Weight	Metric (kg)	65
	USCS (lbs)	143
Transport Height	Metric (mm)	1100
	USCS (inch)	43
Working Height	Metric (mm)	1500
	USCS (inch)	59

TS300HA 230V

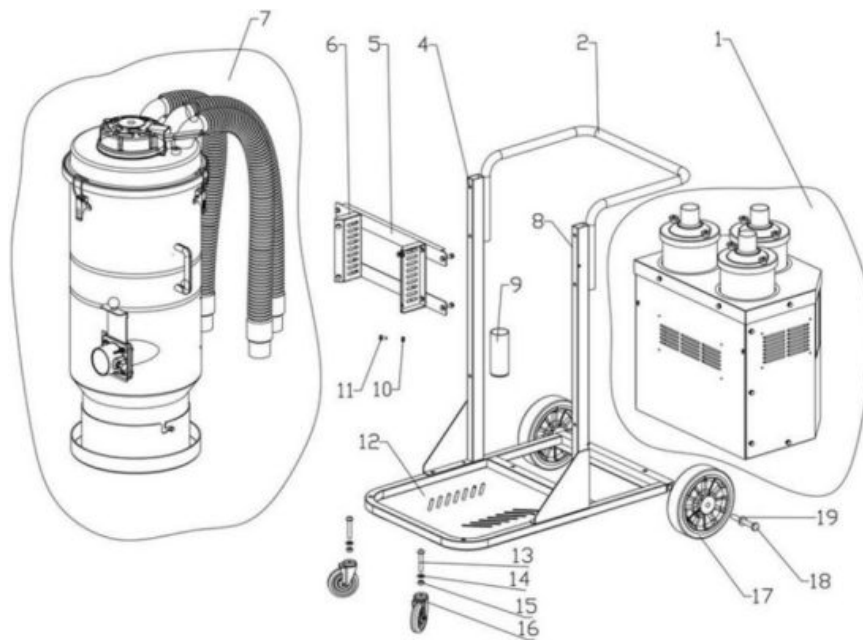
Packing list



S/N	P/N	Description	Quantity	Unit
1		TS300HA dust extractor	1	PC
2	S8046	D50 S wands, 2PCS/SET	1	Set
3	C2031	D70/50 reducer	1	PC
4	58008	D50 EVA hose (double layer)	7.5	Meter
5	58006	D50 hose cuff	1	PC
6	58045	D50 floor brush	1	PC
7	C2144	D70/63 reducer	1	PC
8	58037	D63 PU hose with PC spiral	10	Meter

TS300HA 230V

Exploded views

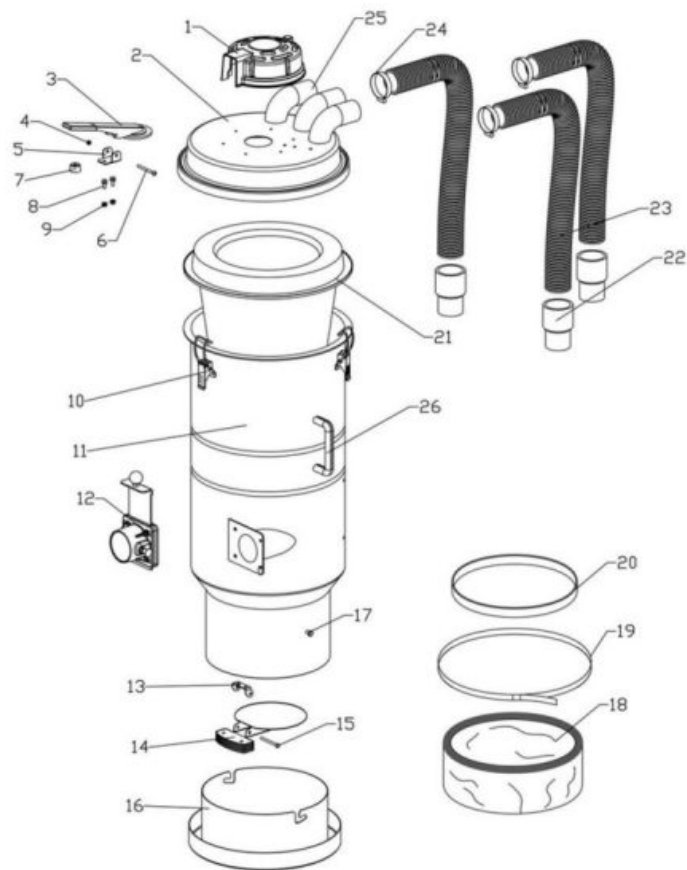


S/N	P/N	Description	Quantity	Dimension	Note
1		TS300HA engine kit	1		
2	C2085	Handle	1		
4	C2138	TS300HA right stand column	1		
5	C2156	TS300HA cross bar	2		
6	C2159	TS series barrel support	2		
7		536 Dustbin kit	1		
8	C2137	TS300HA left stand column	1		
9	C2083	Cable tie storage container	1		

10	50011	Hex nut with washer	8	M6	
11	S001 0	Hex bolt with washer	8	M6*12	
12	C213 5	TS300HA base plate	1		
13	50032	Hexagon bolt	2	M10*60	
14	50045	Plain washer	2	M10	
15	50015	Locknut	2	M10	
16	S903 0	Universal wheels	2	3"	Lockable
17	59011	Heavy-duty caster	2	8"	
18	S003 3	Hex bolt	2	M12100	
19	50046	Extra-large plain cushion	2	M12'30412 .5	

TS300HA 230V

Dustbin kit

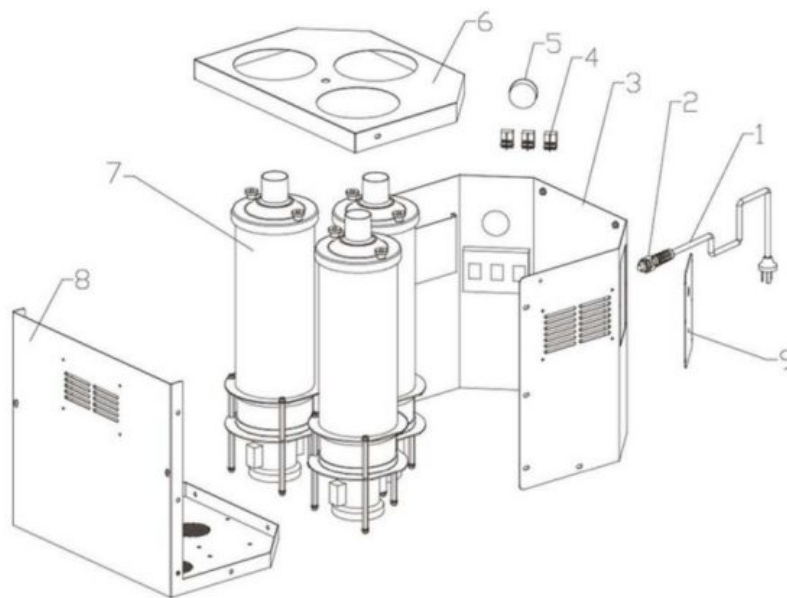


S/N	P/N	Description	Quantity	Dimension
1	C3026	Plastic cover	1	
2	C2368	Top cap	1	
3	C2134	Lever (for jet pulse filter cleaning)	1	
4	50013	Nut	5	M6
5	C2057	Lever holder	1	
6	50028	Hex bolt	2	M6*60
7	50088	Cushion	1	
8	50010	Bolt	6	M6*12
9	50011	Nut	8	M6
10	50120	Buckle		

11	C2370	Barrel		
12	80008	D70 inlet kit	1	
13	C2092	Holder	1	
14	C2090	Flap assembly kit	1	
15	50028	Hex bolt	2	M6*20
16	C2084	Continuous bag holder packing	1	
17	50089	Nut	2	M8*15
18	58035	Continuous folding bag	1	
19	50090	Belt packing	1	
20	58036	Rubber ring	1	
21	58044	S36 filter	1	
22	58006	DSO hose cuff	3	
23	58007	D50 EVA hose	3	D50*520 mm
24	50092	Hose Clamp	3	40-63
25	C2086	DSO bend	2	
26	50061	Handle	2	

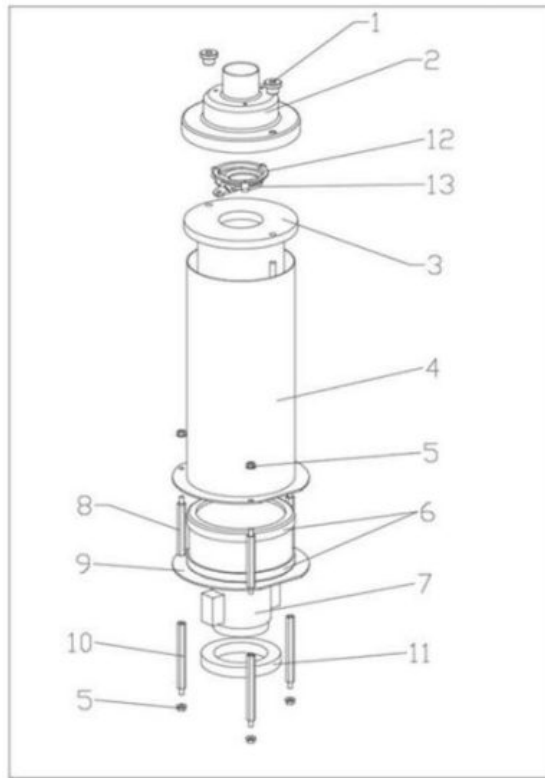
TS300HA 230V

Engine kit



S/N	P/N	Description	Quantity	Dimension
1	50006	Power supply connector	1	PG11
2	S2002	Power cord with plug	1	3*1.5, Length 8m-RVV-10A
3	C2130	Back cover	1	
4	51001	Rocker switch	3	
S	S9022	Vacuum gauge	1	
6	C2125	TS300HA top cover	1	
7		Engine kit	3	
8	C2127	Front top cover	1	
9	C2133	Power panel	1	

TS300HA 230V Motor Package

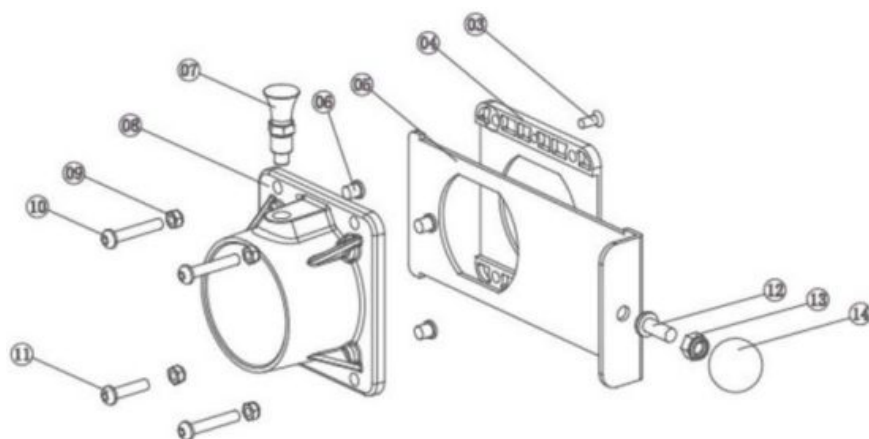


SIN	P/N	Description	Quantity	Dimensions	Notes
1	50091	Nut	2	M8	
2	C2333	HEPA filter top cover	1		
3	58031	H13 HEPA filter	1		
4	C2116	HEPA filter cover	1		
S	50011	Nut	6	M6	
6	C3007	Shock absorption rubber ring	2		
7	51034	Single-phase motor	1	230V 1200 W	
	51036	Single-phase motor	1	120V 1200 W	
	S1037	Single-phase motor	1	110V 850W	

8	50086	Screws-1	3	M6-76.5	
9	C2123	Motor fixed plate	1		
10	50087	Screws-2	3	M6-96.5	
11	S9028	Soundproof sponge	1	D98-78-15	
12	C3054	Check valve base	1		
13	C3055	Check valve	1		

TS300HA 230V

D70 inlet kit

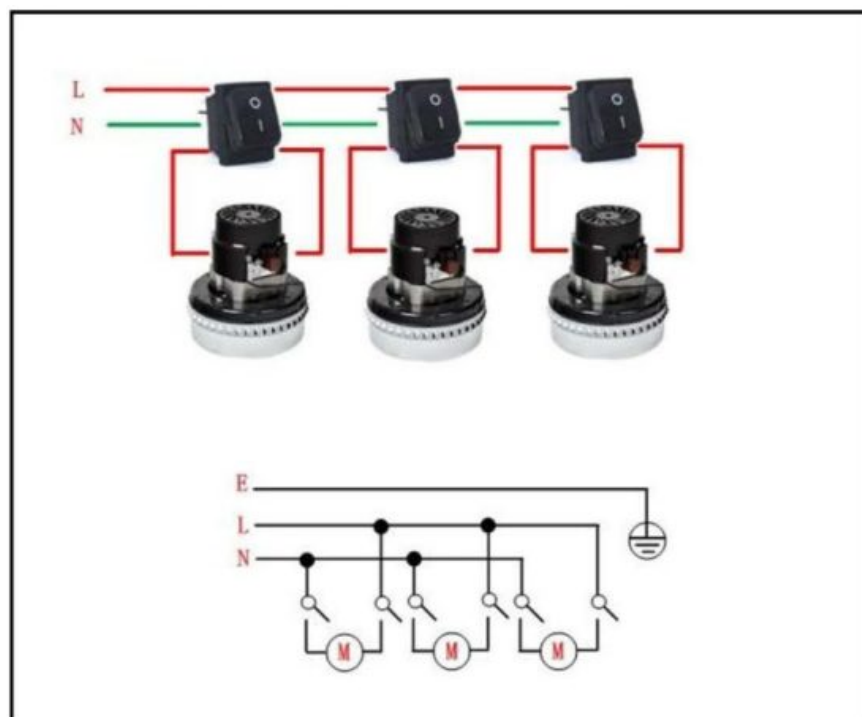


S/N	P/N	Description	Quantity	Dimension	
3	50075	Screw	2	M5*10	
4	C3019	Slide way	1		
S	C2043	Wind baffle	1		
6	S0076	Copper collision	4		
7	C2022	Index plunger	1		
8	C3021	70 outer inlet	1		
9	50013	Locknut	4	M6	

10	50013	Half-round inner hexagon bolt	3	M6*35	
11	50022	Half-round inner hexagon bolt	1	M6*20	
12	50024	Hexagon bolt	1	M6*20	
13	50014	Locknut	1	M8	
14	S0077	Ball knob	1	M8*30	

TS300HA 230V

Electrical diagram



KEVMOR
TRADE SUPPLIES

11 Belmont Avenue, Belmont, WA 6104


☎ 08 9277 7177

🌐 www.kevmor.com.au

✉ sales@kevmor.com.au

www.universalflooringsolutions.com.au

Documents / Resources

	KEVMOR TS300HA Hepa Dust Extractor [pdf] Instruction Manual TS300 a Dust Extractor, TS300, a Dust Extractor, Dust Extractor
---	--

References

- [User Manual](#)

TS300 a Dust Extractor, Dust Extractor, Kevmor, TS300, TS300 a Dust
Kevmor Extractor

Leave a comment

Your email address will not be published. Required fields are marked *

Comment *

Name

Email

Website

☐ Save my name, email, and website in this browser for the next time I comment.

Post Comment

Search:

e.g. whirlpool wrf535swhz

Search

[Manuals+](#) | [Upload](#) | [Deep Search](#) | [Privacy Policy](#) | [@manuals.plus](#) | [YouTube](#)

This website is an independent publication and is neither affiliated with nor endorsed by any of the trademark owners. The "Bluetooth®" word mark and logos are registered trademarks owned by Bluetooth SIG, Inc. The "Wi-Fi®" word mark and logos are registered trademarks owned by the Wi-Fi Alliance. Any use of these marks on this website does not imply any affiliation with or endorsement.