

**KEPLERX**  
**14SEER**  
**Condensing and Air**  
**Handler**



## KeplerX 14SEER Condensing and Air Handler Owner's Manual

[Home](#) » [KEPLERX](#) » KeplerX 14SEER Condensing and Air Handler Owner's Manual 

### Contents

- [1 KeplerX 14SEER Condensing and Air Handler](#)
- [2 MODELS](#)
- [3 TROUBLESHOOTING](#)
- [4 Exploded views and part list](#)
- [5 CONTACT INFORMATION](#)
- [6 Documents / Resources](#)
  - [6.1 References](#)

**KEPLERX**

KeplerX 14SEER Condensing and Air Handler



## MODELS

### Model No.:

- 14S-EHVC\*W2V / 14S-EHVC\*W2H
- 14S-EHVC24W2VS / 14S-EHVC24W2H
- 14S-EHVC30W2VS / 14S-EHVC30W2H
- 14S-EHVB\*W2V / 14S-EHVB\*W2H

Thank you very much for purchasing our air conditioner. Please read this Owner's manual carefully before using your air conditioner.

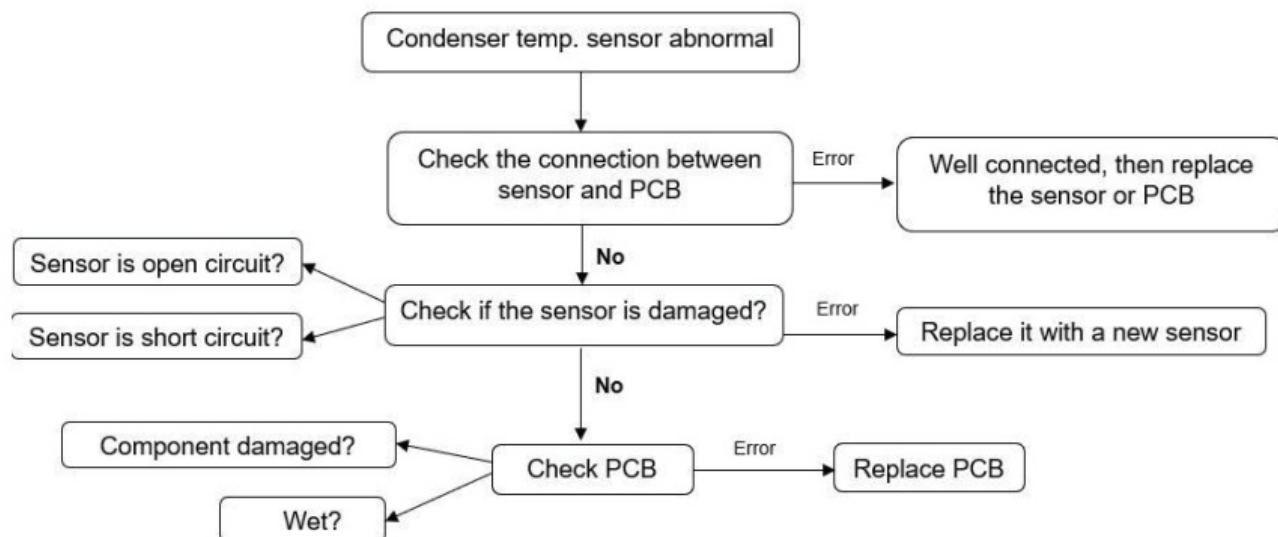
## THANK YOU

Congratulations on your purchase and welcome to the Family. Your new Air Conditioner combines high-efficiency operation with portable convenience. By following the operating and care instructions in this manual, your air conditioner will provide you with many years of reliable service. Please visit our website [www.keplerx.net](http://www.keplerx.net) For any questions or Technical Support, please contact us by mail [info@keplerx.net](mailto:info@keplerx.net) or by phone at 1-866-466-3451.

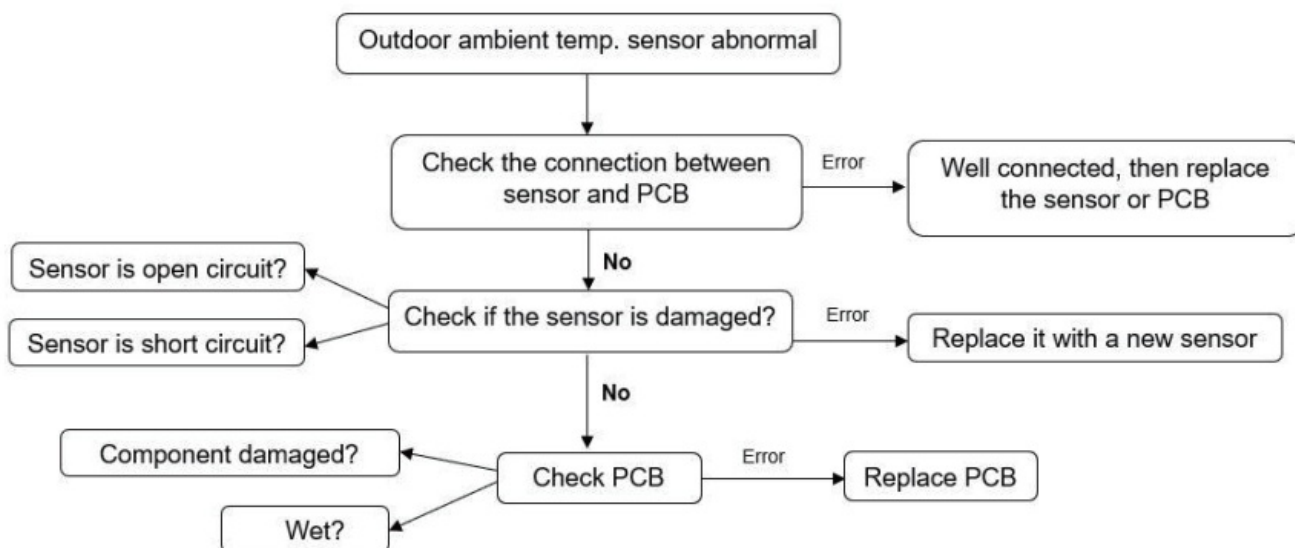
## TROUBLESHOOTING

### Flow chart of troubleshooting

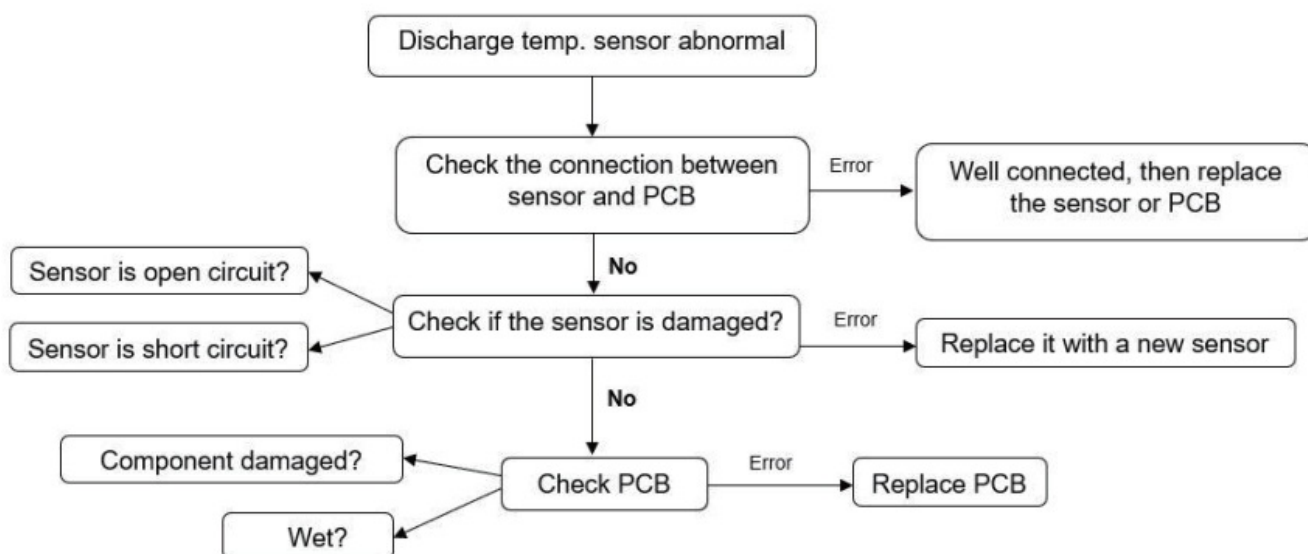
#### 1. T3 Condenser Temperature sensor error



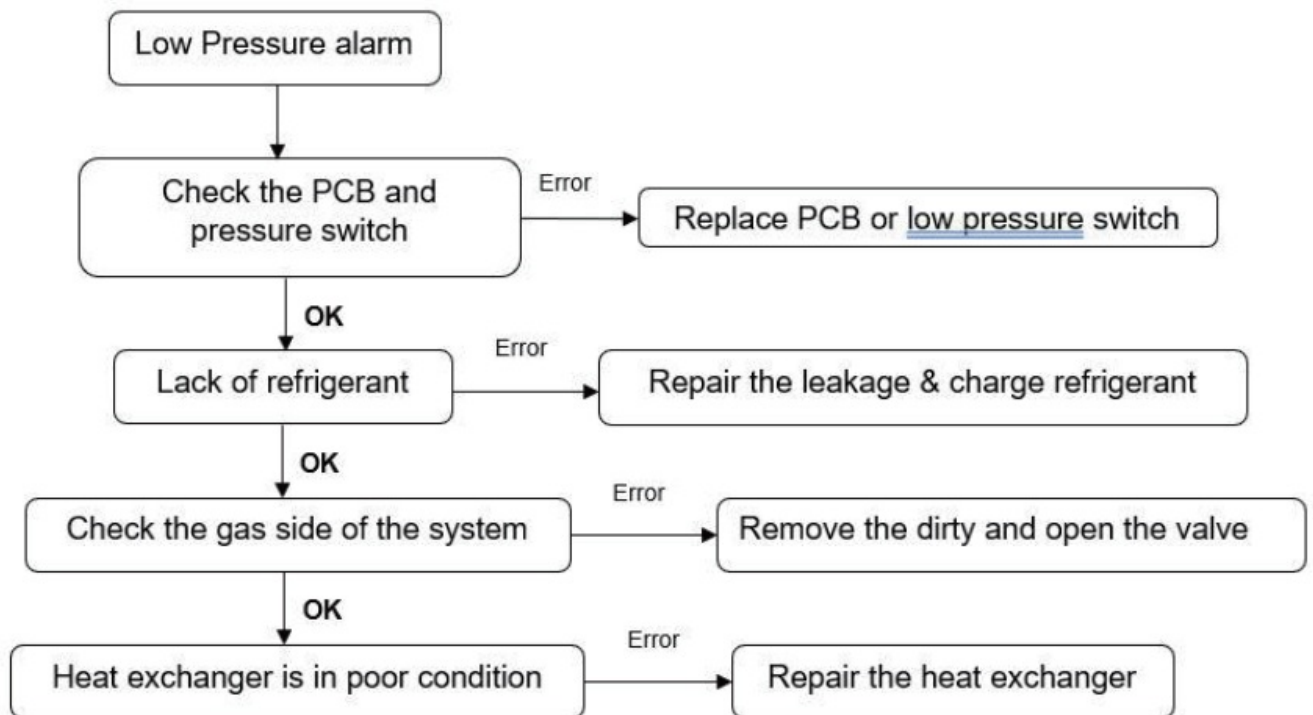
#### 2. T4 Outdoor Ambient Temperature sensor error



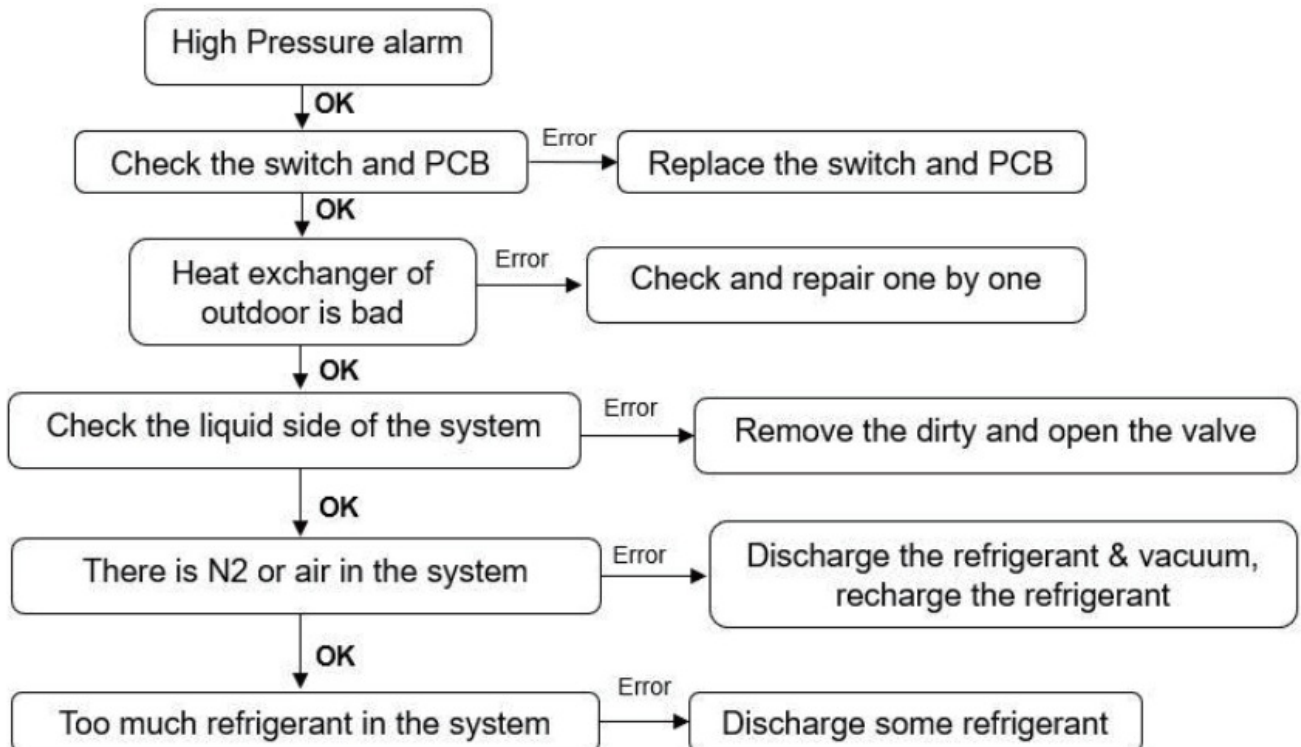
#### 3. T5 Discharge Temperature sensor error



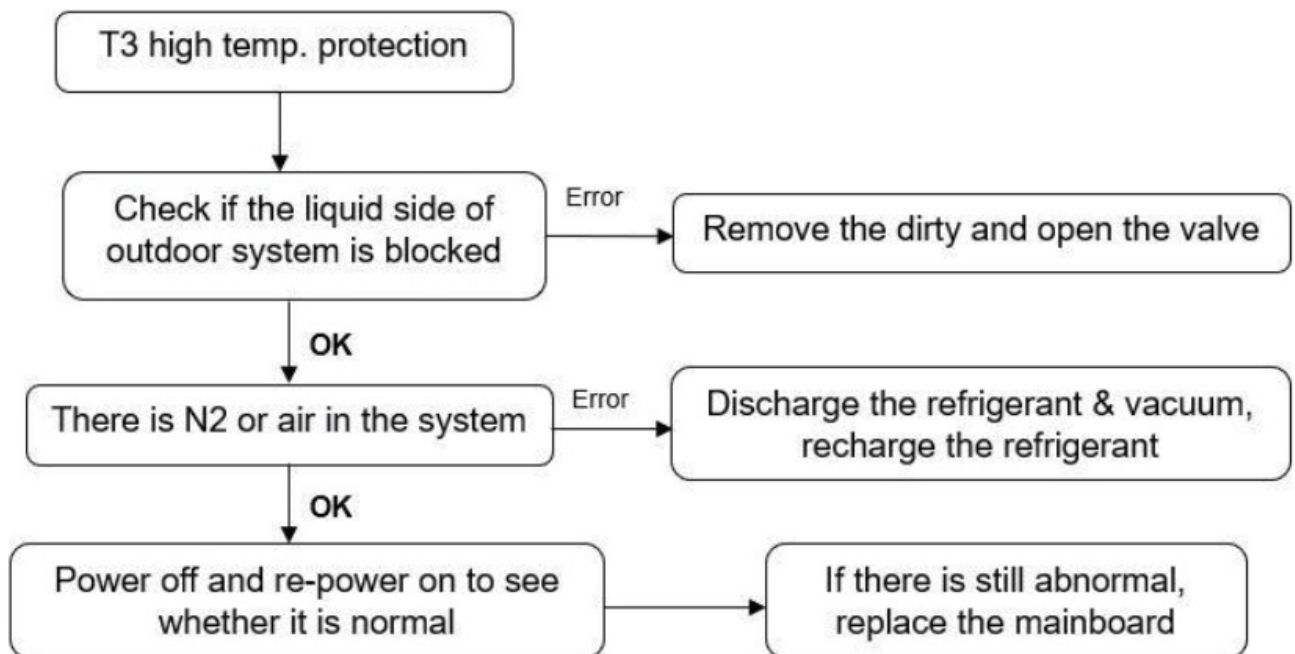
#### 4. Low Pressure alarm



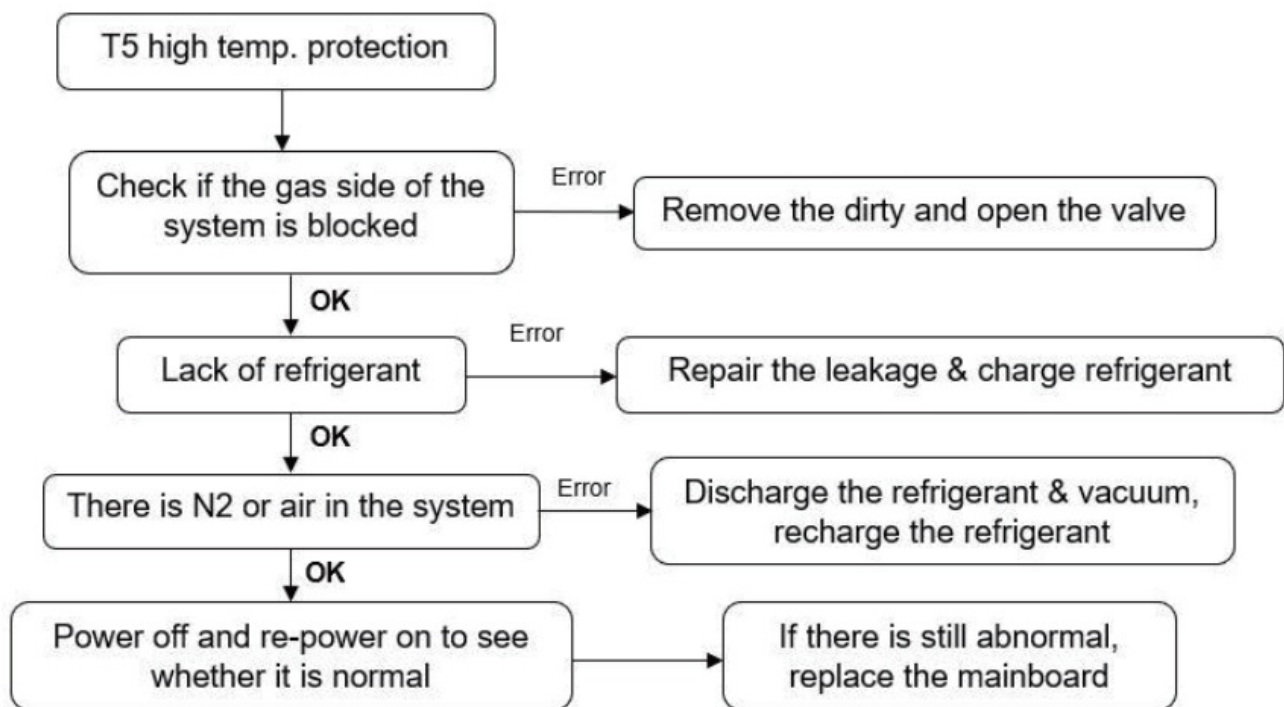
#### 5. High Pressure alarm



#### 6. T3 high temperature protection



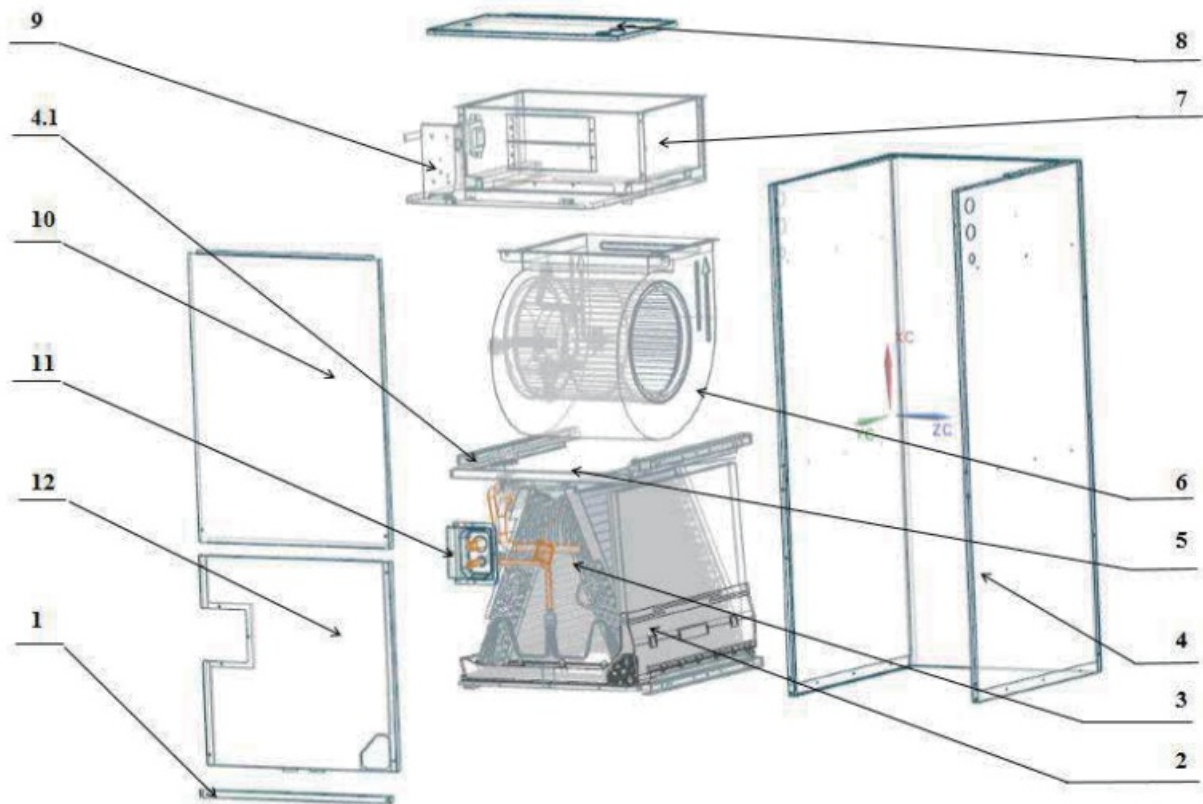
#### 7. T5 high temperature protection



#### Exploded views and part list

##### Air Handler Indoor unit

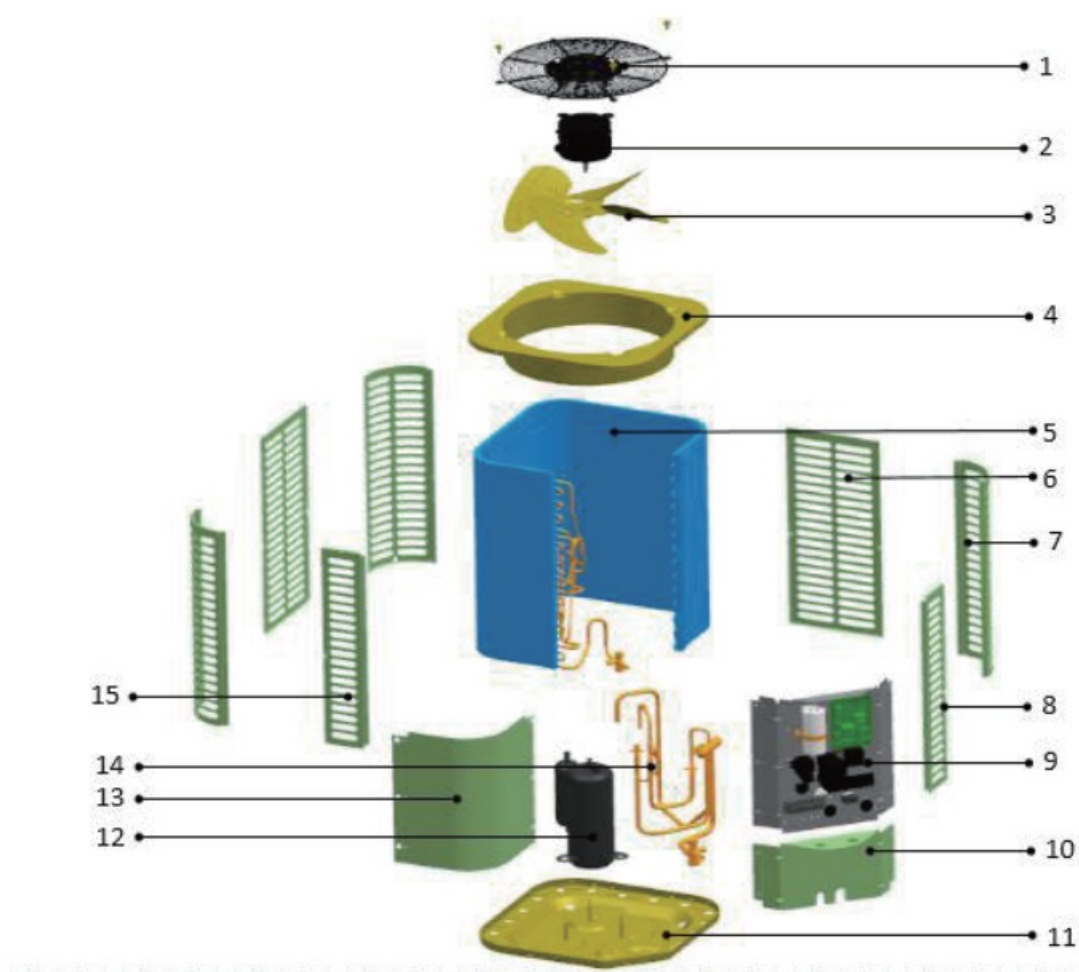




No.	Part Name	Quantity	No.	Part Name	Quantity
1	Filter Cover plate	1	4.1	Water pan supporter assembly	4
2	Water pan components	1	5	Supporter	2
2.1	Water pan# 1	1	6.1	Right Volute Wind Wheel	1
2.2	Water pan# 2	1	6.2	Indoor Motor	1
2.3	Water pan fixed block	1	7	Fan Motor Fixing plate assembly	1
2.4	Water pan brace	2	7.1	Fan Motor Fixing plate	1
3	Evaporator parts	1	7.2	Wind Wheel Fixed Block	2
3.0	Evaporator assembly	1	7.3	Fixed plate on air duct	1
3.1	Air header Assembly	1	7.4	Stator	2
3.2	Diverter Assembly	1	7.5	air duct left stationary plate	1
3.3	Evaporator	2	7.6	air duct right stationary plate	1
3.4	Evaporator Baffle	1	8	Cover of the electric control assembly	1
3.5	Evaporator Baffle	1	9	Electronic Control Components	1

3.6	Evaporator Water Baffle #1	2	9.1	Electronic Control Mounting Plate	1
3.7	Evaporator Water Baffle #2	1	9.2	Main Board	1
3.8	Evaporator Water Baffle #3	1	9.3	Transformer	1
3.9	Evaporator Fixing Plate #1	1	10	Upper-side plate assembly	1
3.10	Evaporator Fixing Plate #2	1	11	Pipe Cover plate assembly	1
3.11	Evaporator Junction Plate	1	12	Lower side plate assembly	1
4	Chassis assembly	1			

### Top discharge outdoor unit







## **Manuals+. Privacy Policy**

This website is an independent publication and is neither affiliated with nor endorsed by any of the trademark owners. The "Bluetooth®" word mark and logos are registered trademarks owned by Bluetooth SIG, Inc. The "Wi-Fi®" word mark and logos are registered trademarks owned by the Wi-Fi Alliance. Any use of these marks on this website does not imply any affiliation with or endorsement.