



# KEPEAK T6 Flashlight User Manual

[Home](#) » [KEPEAK](#) » KEPEAK T6 Flashlight User Manual 

# KEPEAK

T6 Flashlight  
User Manual

## Contents

- [1 T6 Flashlight](#)
- [2 SAFETY PRECAUTIONS](#)
- [3 PRODUCT ACCESSORIES](#)
- [4 HOW TO INSERT THE BATTERY](#)
- [5 HOW TO ADJUST THE ZOOM](#)
- [6 COMMON PROBLEM SOLVING:](#)
- [7 Documents / Resources](#)
  - [7.1 References](#)

## T6 Flashlight



## **SAFETY PRECAUTIONS**

### **PRECAUTIONS DURING USE**

- Please read the instruction manual of this product carefully before use.
- Do not shine directly into the eyes to avoid eye damage.
- The torch should not be disassembled and modified for repair by non-professionals as this may damage the circuit board.
- The repair warranty is not included with the modified product.
- If the flashlight is abnormally hot, makes strange noises and smells, or feels abnormal, stop using it immediately.

### **PRECAUTIONS FOR STORAGE**

- Keep out of reach of children.
- For batteries that are not used for a long period of time, store them fully charged and then charge and discharge them once every three months to avoid chemical corrosion.
- Do not use this product underwater for long periods of time.
- Do not leave the torch in contact with sunlight, water, chemicals and corrosive gases for long periods of time as this may damage the torch.

## **PRODUCT ACCESSORIES**

Before using this product, please check that the flashlight and its full set of accessories are included



1\* Small flashlight



1\* 18650 Battery Tube



1\* AAA Battery Holder



1\* Lanyard

## PRODUCT STRUCTURE



## 5 LIGHT MODE :

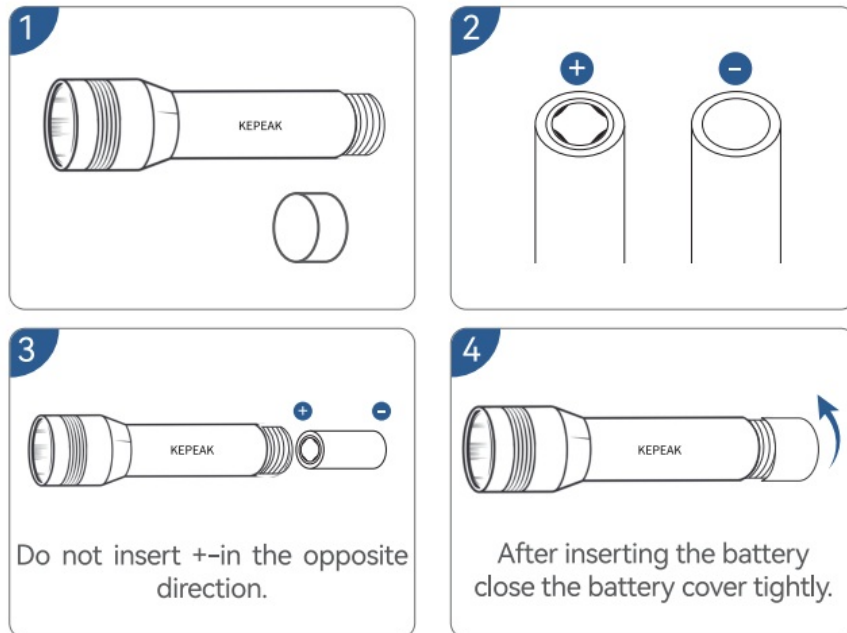
When the flashlight on, just press the tail power button to switch 5 modes in the following order: ->high brightness-medium brightness → low brightness → flash → SOS → off.

## ONE-CLICK OFF:

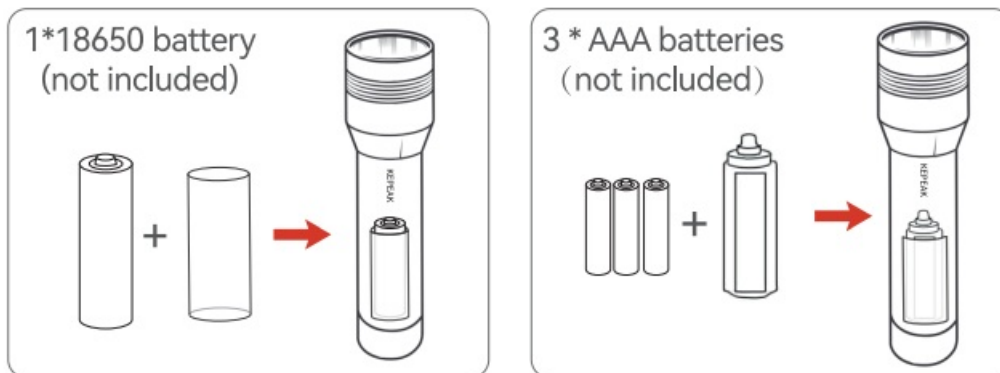
Deep pressing the tail button, the flashlight can be turned off in any mode



## HOW TO INSERT THE BATTERY



### Supports 2 types of batteries



### HOW TO ADJUST THE ZOOM

1. Large irradiation range: Floodlight for wide range illumination.



2. Long range illumination:

Spotlight Suitable for long range illumination, throws a beam of light up to 1000ft.



## COMMON PROBLEM SOLVING:

Q: Must you cycle through the modes each time you turn the flashlight on? h all

A: Press the tail on/off button HARD to turn on or off. While it is ON, press it LIGHTLY to change the light modes: high /middle/low/strobe/SOS.

Q: How do white tube work?

A: The white tube is used to fix the 18650 battery. Put the 118650 battery in the white tube, and then install it in the flashlight, then install the tail and click the tail switch.

Q: Does the portable flashlights included batteries?

A: Not included.

Q: How to insert the battery?

If you have any other questions, please contact us through Amazon Buyer-Seller Messaging or contact our after-sales mailbox: [kepeak@hotmail.com](mailto:kepeak@hotmail.com)

# KEPEAK



## [KEPEAK T6 Flashlight](#) [pdf] User Manual

T6 Flashlight, T6, Flashlight

### References

- [User Manual](#)