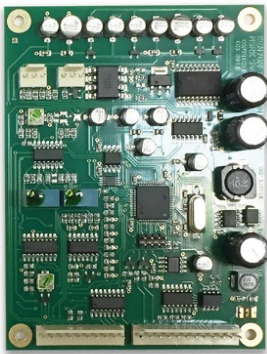




KENTON Sequential Pro One Midi Retrofit Kit Instructions

[Home](#) » [KENTON](#) » KENTON Sequential Pro One Midi Retrofit Kit Instructions 

KENTON Sequential Pro One Midi Retrofit Kit Instructions



User instructions for Kenton MIDI retrofit for Sequential Pro-One

These instructions are only for Pro-One MIDI retrofit kits produced after 8

th July 2018

Firmware MSRK5206 or later

N.B. Different instructions apply to earlier Kenton MIDI retrofit kits for the Pro-One

USING THE MIDI INTERFACE

When you turn on the synthesiser for the first time, you will be in omni-off mode MIDI channel 1 for receive – See the following pages for other factory default settings. When you select a receive channel, this will be stored in memory and will be remembered for when you subsequently turn on the synth – all parameters listed on the next page are stored.

If you want to put the machine back to the factory default settings at any time, switch the synth on whilst holding the red push button pressed – hold for a couple of seconds then release.

MIDI SELECTION

MIDI selection is automatic – playing a note on the connected MIDI keyboard (on the selected MIDI channel) will switch to MIDI, playing a note on the Pro-One's own keyboard will switch back to its own keyboard.

RED PUSH BUTTON

Two modes are available by pushing the red push button during normal playing mode. Before you press the red button however, make sure that no keys are already pressed on the connected MIDI keyboard otherwise the results may be unpredictable. The key presses can be entered only from the connected MIDI keyboard and may be sent on any MIDI channel.

1. SET-UP MODE

For setting MIDI channels and assignments. Give the red push button a short press (half a second) – then release.

Follow this with a key press or sequence of key presses as detailed on page 2. After making a MIDI channel assignment, you will be automatically returned to playing mode but after making other assignments you will need to press the ENTER key (Top C) to return to playing mode; this is to enable you to make the multiple key presses required when re-assigning Sources to Destinations. (N.B. all set-ups are stored in non volatile memory).

2. TRANSPOSE MODE / CLOCK DIVIDE SETTING MODE

Press and hold the red push button for about four seconds – then release. Middle C will sound on the Pro-One and continue to sound until you press a key on the connected keyboard. Starting from middle C, pressing middle C itself gives zero transpose, pressing the G above middle C will transpose up by 7 semitones, or the F below middle C will transpose down by 7 semitones. You can set any value up to two octaves up or down – settings outside this range will be ignored. Note that transpose mode cannot be entered from set-up mode. The transpose setting will not be stored.

While the bottom four octaves on a 61 note connected keyboard are used to set “transpose”, the top octave will set the clock divide. See page 3 for full details .

Function of keys during set-up mode:

C	Receive channel	1 (default)		[Bottom C - MIDI note #36]
Db	" "	2		
D	" "	3		
Eb	" "	4		
E	" "	5		
F	" "	6		
Gb	" "	7		
G	" "	8		
Ab	" "	9		
A	" "	10		
Bb	" "	11		
B	" "	12		
C	" "	13		
Db	" "	14		
D	" "	15		
Eb	" "	16		
E	" "	sets the MIDI channel this note was received on		
F	Not Used			
Gb	" "			
G	Aftertouch as controller source for any of Aux 1-4		\	Sources Sources can also be any CC #0-119
Ab	Velocity as controller source for any of Aux 1-4		\	
A	Pitchbend as controller source for any of Aux 1-4		/	
Bb	OFF as controller source for any of Aux 1-4		/	
B	Not Used			
C	Aux 1 controller – LP filter cutoff [default cc16]		\	[Middle C - MIDI note #60] Destinations
Db	Aux 2 controller – Volume [default cc 7]		\	
E	Aux 3 controller (unused) [default cc18]		\	
Eb	Aux 4 controller (unused) [default cc19]		\	
E	Aux 5 controller (synth internal modulation) [default cc 1]		\	
F	MIDI LFO to Aux1 controller [default cc17]		\	
Gb	MIDI LFO to CV controller [default cc15]		/	
G	MIDI LFO Speed [default cc14]		/	
Ab	MIDI LFO waveshape [default cc13]		/	
A	MIDI LFO – MIDI Sync [default cc12]		/	
Bb	Portamento on-off controller [default cc65]		/	
B	Portamento rate controller [default cc 5]		/	
C	Not Used			
Db	" "			
D	" "			
Eb	" "			
E	" "			
F	" "			
Gb	" "			
G	" "			
Ab	" "			
A	" "			
Bb	" "			
B	" "			
C	" "			
Db	" "			
D	" "			
Eb	" "			
E	" "			
F	" "			
Gb	" "			
G	Single trigger mode			
Ab	Multi trigger mode [default]			
A	Pitchbend range 2 semitones (a tone) [default]			
Bb	Pitchbend range 7 semitones (a fifth)			
B	Pitchbend range 12 semitones (one octave)			
C	ENTER key	Press & release to store & return to play mode [Top C - MIDI note #96]		

Contents

1 ASSIGNING MIDI CONTROLLERS

2 OTHER INFORMATION

3 CLOCK DIVIDE

4 GENERAL INFORMATION ABOUT MIDI CONNECTIONS

5 WARRANTY

6 Documents / Resources

6.1 References

7 Related Posts

ASSIGNING MIDI CONTROLLERS

1. To assign MIDI controllers for the destinations available on page 2:
 - a) press the red push button to enter set-up mode (short press and release)
 - b) either send the controller you want to assign by moving the knob or slider on your remote keyboard or press a key on your remote keyboard to select Aftertouch, Velocity, Pitchblende or Off as a source
 - c) Next press a key on your remote keyboard to select the destination you want to be controlled with it.
 - d) Then either hit Top C to enter/exit and store, or go back to b) to make another assignment.
2. Note that Aftertouch, Velocity and Pitchbend can only be used as controller sources for any of Aux 1 to 4. Any other controllers can only be set to CC numbers or Off.
3. Note that "Off" merely stops that particular Aux (or other destination) from responding to any further MIDI messages. It will stay at the level you last set (until next turned on) and will not be reset to default or any other value.
4. You can store newly changed values set using CCs to non-volatile memory for certain parameters.

By entering and then immediately exiting setup mode, data values for the parameters listed below are updated in non-volatile memory. To do this, give the red push button a short press, then press top C to exit (without pressing any other keys).

Parameters that have updateable and storable values are as follows:

 - MIDI LFO to Aux1 amount
 - MIDI LFO to CV amount
 - MIDI LFO Speed
 - MIDI LFO waveshape
 - MIDI LFO MIDI Sync (on-off, divide value)
 - Portamento rate

So for example if you send a MIDI CC (CC14 by default) to control a parameter such as MIDI LFO speed, the new data value (the new speed) set using that MIDI CC can be stored as the new power-on value (speed in this case) by entering and then immediately exiting setup mode. Note that it is the data _value_ that is being stored by this means, not the CC number itself.

For more information on using the above parameters see the Modular Solo User Manual
5. Receive channel setting will return you directly to playing mode, all other keys will let you stay in SET-UP mode until you press the ENTER key (Top C).
6. The ENTER key (Top C) also performs a "reset all controllers" function – OFF in most cases, but ON for volume, and centre for pitch bender.
7. If you want to put the MIDI retrofit back to its factory default settings at any time, switch the Minimoog on whilst

holding the red push button pressed – hold for a couple of seconds then release.

8. During set-up mode, the retrofit will receive on ALL MIDI channels.

OTHER INFORMATION

The internal MIDI syncable LFO can be controlled as follows:

MIDI LFO to CV controller [default CC15] **MIDI LFO Speed** [default CC14] **MIDI LFO waveshape** [default CC13]
MIDI LFO – MIDI Sync [default CC12]

The default controller numbers can be changed as shown on

CLOCK DIVIDE

MIDI clock comes in at 24 clocks per quarter note. The default setting is for the divide to be set so that 4 pulses per quarter note are sent on to the Pro-One (semi-quavers). You can change the relationship between incoming clocks and the clocks sent to the Pro-One using the Transpose / Clock setting mode. You enter this as follows: Press and hold the red push button for about four seconds – then release. Middle C will sound on the Pro-One and continue to sound until you press a key on the connected MIDI keyboard. Pressing any of the keys listed below will make the selection and return to normal playing mode, there is no need to press Top C in this mode.

The following keys at the top of a connected 61 note MIDI keyboard will set clock divide as follows:

Top C = not used – returns to normal playing mode (MIDI note 96 – 3 octaves above middle C)

B = div 1 = 24ppqn

Bb = div 2 = 12ppqn

A = div 3 = 8 ppqn

Ab = div 4 = 6 ppqn

G = div 6 = 4 ppqn (default)

Gb = div 8 = 3 ppqn

F = div 12 = 2 ppqn

E = div 16 = 1.5ppqn

Eb = div 24 = 1 ppqn

D = not used – returns to normal playing mode

Db = not used – returns to normal playing mode

C = this key and below will set transpose

Any setting made to clock divide is stored in non-volatile memory

GENERAL INFORMATION ABOUT MIDI CONNECTIONS

Any MIDI IN should be connected to a MIDI OUT or a MIDI THRU similarly any MIDI OUT should be connected only to a MIDI IN and any MIDI THRU should also only be connected to a MIDI IN.

MIDI OUT (if fitted) is the signal from the synthesiser (or drum machine etc.) that is to be sent to another instrument.

MIDI IN is a received signal that contains MIDI information from another synth, and MIDI THRU is an exact copy of information arriving at the MIDI IN socket. This allows several instruments to be connected together.

If you want to wire your own MIDI cables the following information may be useful.

1. Although a 5 pin connector is used, only two connections plus an earth connection are required.
2. If you look at the din plug from the wiring side you will see that the pins are numbered. From left to right (or clockwise) these are 1 – 4 – 2 – 5 – 3.
3. The pins numbered 1 & 3 are not used.
4. The screen (earth) is connected to pin 2 (centre pin)
5. Pin 4 of one plug should be connected to pin 4 of the other
6. Pin 5 of one plug should be connected to pin 5 of the other
7. You should now have a working MIDI lead
8. It is preferable to label one end of the cable MIDI IN & the other end MIDI OUT, to avoid confusion.

WARRANTY

All Kenton MIDI Kits come with a 12 month (from purchase date) back to base warranty, (i.e. customer must arrange and pay for carriage to and from Kenton Electronics Ltd.). Note that kits should be fitted as soon as possible after purchase, as the retrofit kits are in a continuous state of development.

Kenton Electronics Ltd.

Unit 3, Epsom Downs Metro Centre, Waterfield, Tadworth, KT20 5LR, UK


Tel: +44 (0)20 8544 9200 Fax: +44 (0)20 8544 9300

www.kenton.co.uk

E & OE Copyright (c) KENTON Electronics Ltd. & John Price 1986-2023 Version PRO15206



Documents / Resources

	<p>KENTON Sequential Pro One Midi Retrofit Kit [pdf] Instructions Sequential Pro One Midi Retrofit Kit, One Midi Retrofit Kit, Midi Retrofit Kit, Retrofit Kit, Kit</p>
---	---

References

- [K Kenton Electronics - Welcome](#)
- [User Manual](#)

[Manuals+](#), [Privacy Policy](#)

This website is an independent publication and is neither affiliated with nor endorsed by any of the trademark owners. The "Bluetooth®" word mark and logos are registered trademarks owned by Bluetooth SIG, Inc. The "Wi-Fi®" word mark and logos are registered trademarks owned by the Wi-Fi Alliance. Any use of these marks on this website does not imply any affiliation with or endorsement.