

**KENT**  
**CS6 Ultrasonic Mist**  
**Dew Humidifier**



## KENT CS6 Ultrasonic Mist Dew Humidifier User Manual

[Home](#) » [Kent](#) » KENT CS6 Ultrasonic Mist Dew Humidifier User Manual 

### Contents

- [1 KENT CS6 Ultrasonic Mist Dew Humidifier](#)
- [2 Introduction](#)
- [3 Features of KENT DEW](#)
- [4 Items in the box](#)
- [5 Know your product](#)
- [6 How to Operate](#)
- [7 How To Clean The KENT DEW](#)
- [8 Safety Instructions](#)
- [9 Troubleshooting](#)
- [10 WARRANTY CARD](#)
- [11 TECHNICAL SPECIFICATIONS](#)
- [12 Documents / Resources](#)
  - [12.1 References](#)
- [13 Related Posts](#)

**KENT**

**KENT CS6 Ultrasonic Mist Dew Humidifier**

**Dear Customer,**

Congratulations on your purchase and welcome to KENT. At the outset, allow us to thank you for your trust in KENT Appliances. At KENT, we take pride in our reputation for quality products and industry proven performance. We are certain that you will be more than satisfied with KENT DEW Humidifier's performance and that it will serve you and your family's requirements without any compromise. This guide will help you in getting the best out of your appliance. Please go through the booklet to familiarise yourself with its operation and maintenance. With its robust built and quality, you can look forward to years of trouble-free service. Should you need further assistance, do not hesitate to contact your nearest KENT dealer or branch. Happy Living!

KENT RO Systems Ltd.

**Introduction**

We, at KENT have always believed that a clean and healthy life is a right of every individual. This ethos is what made us embark on the journey to develop innovative solutions for purifying the water we drink, vegetables and fruits we eat, homes we live in, and the air we breathe. With the use of innovative technologies, supported by a competent service network, we have been able to create a brand which has become synonymous for well-being and health. Continuing with the tradition, we now present the KENT DEW, designed to combat skin dryness and irritation by infusing moisture into the air. This elegant humidifier helps to prevent dry skin, congestion, and discomfort to give you a soothing environment with its ultrasonic technology.

**Features of KENT DEW**

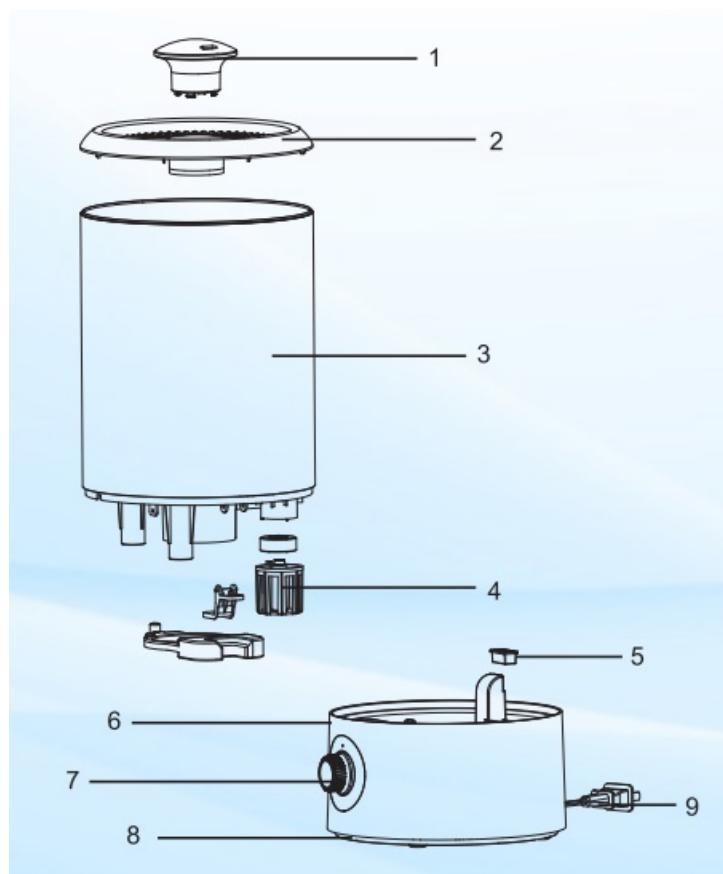
1. Keeps room cool in summers.
2. Eliminates dryness caused by ACs & room heaters.
3. Ultrasonic mist makes no water droplets.
4. UV LED light kills bacteria & viruses
5. 4L Large capacity of water tank

**Items in the box**

1. KENT DEW
2. User Manual

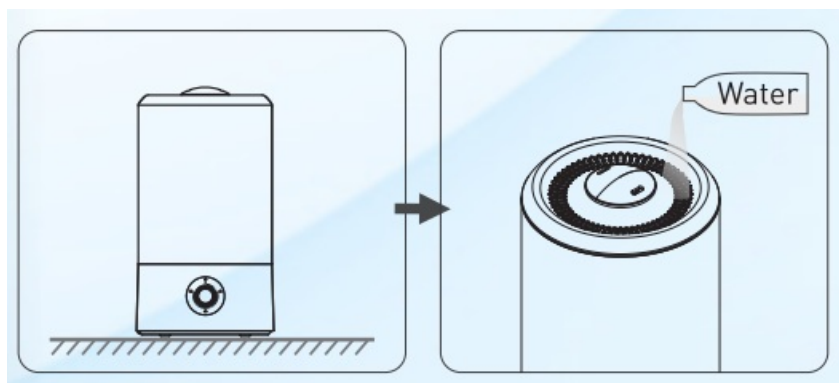
## Know your product

1. Nozzle
2. Cover
3. Water tank
4. Water outlet
5. Aroma box
6. Base
7. Knob
8. Bottom base
9. Cord

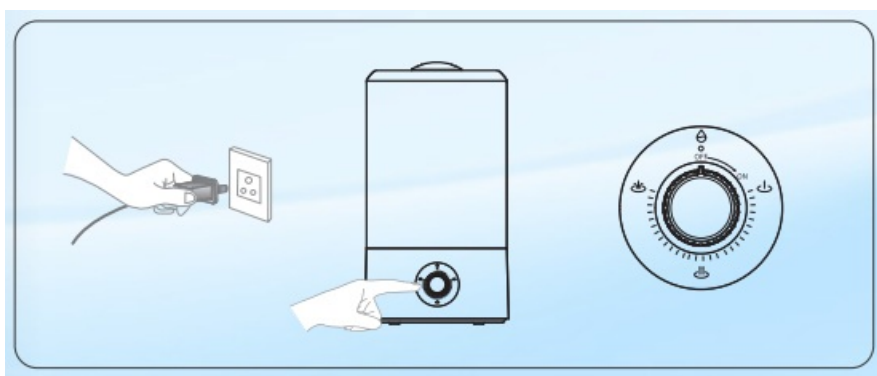


## How to Operate

1. Place the humidifier on a flat surface and remove the upper cover to add water or add water by the top water inlet.
2. Before turning on the power supply, ensure that the machine's working voltage matches the operating voltage.



- To start, rotate the knob clockwise, the indicator light will turn green indicating that the humidifier is switched ON. UV LED light will also be ON, at the same time
- In case of insufficient water level, the indicator light will turn red. The humidifier will stop working and the UV LED light will also turn OFF as well

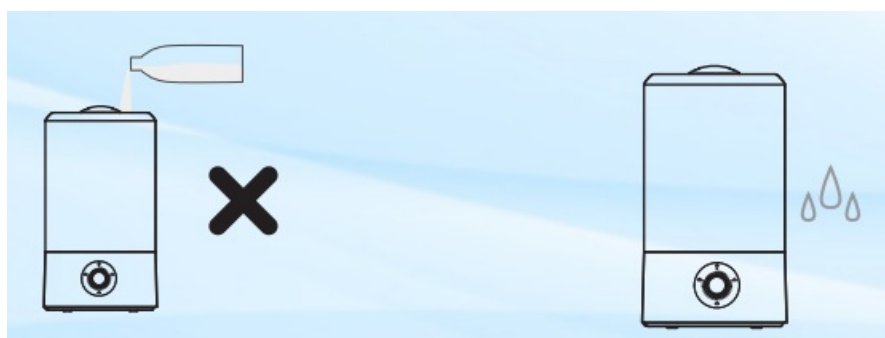


## How To Clean The KENT DEW

1. Make sure to unplug the power before cleaning the humidifier:



2. It is recommended to clean the water tank weekly. Tilt the water tank and let the water flow out along the water tank opening.
3. Do not use abrasive, corrosive and flammable detergents for cleaning.



4. Regular cleaning of the inside and outside of the humidifier is recommended to prevent dust accumulation.

## Caution

1. Please use the humidifier at 2 metres from the furniture and electrical appliances to avoid moisture exposure to the furniture and appliances during work.
2. When the room temperature is below zero, pour water out of the tank to avoid freezing and causing damage to the humidifier.
3. Do not disassemble the machine without professional technicians.

## Safety Instructions

1. The supply voltage must be in line with the rated voltage of the product.
2. Please use at normal room temperature between 5° C to 40° C.
3. Please do not put the humidifier directly on the wood floor to avoid moisture deformation of the wood floor.
4. Please put it in a flat position to avoid tilting.
5. Turn off the power and unplug before pouring the water out of the tank.
6. Never inject hot water above 40° C into the water tank to avoid damage to the machine.
7. Please avoid water flowing into the appliance when cleaning.
8. Please do not put chemicals and detergents in the tank; otherwise, there will be bad atomization.
9. Keep away from any heat source and avoid direct sunlight.

## Troubleshooting

Humidifier is not working properly.	The appliance should be plugged in. The water tank should be filled in and properly installed.
Water tank is Leaking.	The tank should have the appropriate water level. It should be well assembled and installed.
The humidifier is emitting an unpleasant odour.	The water needs to be cleaned regularly

## WARRANTY CARD

- **Product:** KENT DEW
- **Product Code:** 115009
- **Serial No.**
- **Dealer Stamp**

**Customer Details:**

- Customer's Name:
- Customer's Address:
- Customer's Phone No.:
- Warranty Details:
- Invoice Date
- Invoice No.: ..
- **Imported & Marketed by:** KENT RO SYSTEMS LTD. E-6, Sector-59, Noida, U.P.-201 309, India.
- **E-mail:** [service@kent.co.in](mailto:service@kent.co.in)
- **Website:** [www.kent.co.in](http://www.kent.co.in)
- **Customer Care:** 92-789-12345

## TERMS & CONDITIONS OF WARRANTY

KENT warrants all new products manufactured by it to be free from defects in material and workmanship under normal usage and service from the date of purchase as under:

1. The Warranty period commences from the date of purchase by the first end-user. During this Warranty period of one year, KENT or its Authorised Service Provider [ASP] will replace or repair any part of KENT DEW, that in the opinion of KENT or its ASP, would be defective in operation due to faulty material or workmanship [i.e. manufacturing defects) with the exception of consumables.
2. The product's plastic body is not covered under Warranty and hence, it must be handled with care to guard against breakage.
3. The original purchaser of the unit can avail services under Warranty at the point of sale by producing the damaged part[s] along with the original invoice.
4. This Warranty is void if the unit is not operated under normal conditions or according to the instructions given in the manual.
5. Product returned to KENT or its ASP for Warranty examination must be shipped freight prepaid.
6. KENT or its ASP shall not be held liable for claims exceeding the cost of repair of the defects in workmanship.
7. This Warranty Agreement shall not be interpreted to render KENT or its ASP liable for injuries or damages of any kind direct, consequential or contingent to persons or property.
8. KENT or its ASP shall not be held responsible by representative or buyer for failure to abide by any of the obligations of this Warranty Agreement, if such failures are the result of circumstances of Forces Majeure such as [but not limited to), floods, earthquakes, transportation strikes, labour disputes with outside suppliers or any other conditions beyond the control of KENT or its ASP.
9. KENT or its ASP shall not be held liable for repair or alterations made without prior written approval for product failures resulting from the lack of proper maintenance.
10. This Warranty Agreement excludes all products/component parts or damage to any part of this KENT DEW which in the opinion of KENT or its ASP have been subjected to misuse; misapplication; negligence; alteration; accident or operation contrary to our instructions. Incompatibility with accessories not installed by KENT or its ASP, or that have been repaired with component parts other than manufactured by or obtained from KENT or its ASP. Damage caused by freezing, flood, fire or Act of God is not covered by this Warranty. In all such cases, regular charges will apply. This limited Warranty does not include service to diagnose a claimed malfunction in this unit.
11. KENT reserves the right to alter or improve design and specifications at any time, without any contingent

obligations to prospective buyers or owners of the products previously sold.

12. Any disagreements and obligations based upon the purchase of KENT products and thereby imposed on KENT or its ASP shall be governed by and construed according to the laws of INDIA and subject to the jurisdiction of Delhi Courts only.
13. KENT or its ASP assumes No Warranty liability in connection with this KENT Dew other than that specified herein. This Warranty is in lieu of all other warranties, expressed or implied, including warranties of fitness for a particular purpose. KENT or its ASP does not authorise any person or representative to assume for them any other obligations on the sale of this KENT Dew.
14. Under no circumstances, the liability of KENT or its ASP shall exceed the value of the product.
15. Under no circumstances are the terms mentioned above negotiable and no employee of KENT or its ASP has the authority to supersede them.

## TECHNICAL SPECIFICATIONS

- **Product** KENT DEW
- **Product code** 115009
- **Net weight** 1.05 kg
- **Water tank capacity** 4L
- **Input power supply** Single Phase 220-240 V AC, 50 Hz.

## Documents / Resources

	<a href="#">KENT CS6 Ultrasonic Mist Dew Humidifier</a> [pdf] User Manual CS6, CS6 Ultrasonic Mist Dew Humidifier, Ultrasonic Mist Dew Humidifier, Mist Dew Humidifier, Dew Humidifier, Humidifier
---	---

## References

- [User Manual](#)

[Manuals+](#), [Privacy Policy](#)

This website is an independent publication and is neither affiliated with nor endorsed by any of the trademark owners. The "Bluetooth®" word mark and logos are registered trademarks owned by Bluetooth SIG, Inc. The "Wi-Fi®" word mark and logos are registered trademarks owned by the Wi-Fi Alliance. Any use of these marks on this website does not imply any affiliation with or endorsement.