



# Kensington Wireless Presenter with Laser Pointer User Guide

[Home](#) » [Kensington](#) » Kensington Wireless Presenter with Laser Pointer User Guide

## Contents [ [hide](#) ]

- 1 User Guide**
  - [1.1 Kensington Wireless Presenter with Laser Pointer](#)
- 2 What's in Box?**
- 3 Support**
- 4 How to use**
- 5 CAUTION! IMPORTANT SAFETY INSTRUCTIONS**
- 6 About your Wireless Presenter with Laser Pointer**
- 7 CLASS 2 LASER SAFETY STATEMENT**
- 8 Documents / Resources**
- 9 Related Posts**

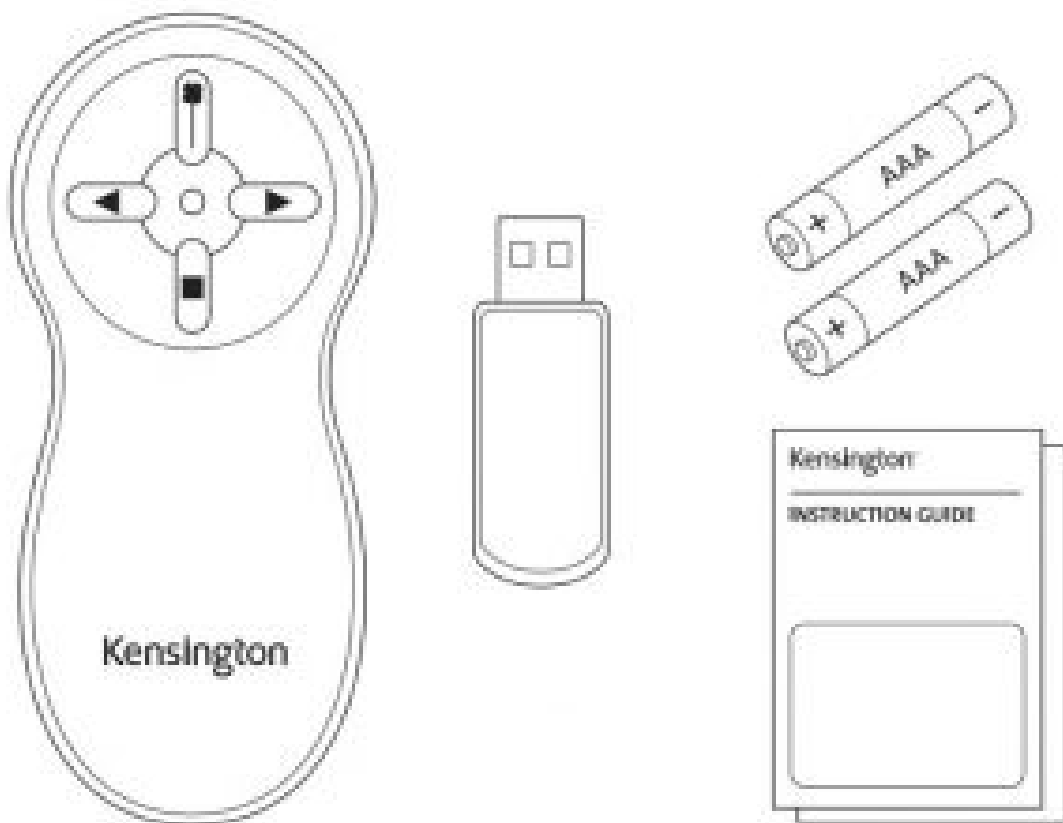
## User Guide



### Kensington Wireless Presenter with Laser Pointer

Register your product at: [kensington.com/register](https://kensington.com/register)

#### What's in Box?



Support

[kensington.com/support](https://kensington.com/support)

Australia	1300 881 931	México	55 15 00 57 00
België / Belgique	02 401 2395	Nederland	010 713 1882
Brasil	14 3235-4003	New Zealand	0800 539 26273
Canada	1 800 268 3447	Norway	80017520
中国	400 0884 219	Österreich	0800 677 783
Denmark	80 250966	Polska	22 570 18 00
Deutschland	0692 222 3654	Portugal	800855802
España	911 146 715	Россиа	007 495 933 5163
Finland	0800 9 15697	Schweiz / Suisse	044 580 6667
France	01 7671 0404	Singapore	+65-6776-0195
Hong Kong	00852 2823 5130	Sweden	08 5033 6577
Hungary	06 20 9430 612	United Kingdom	0203 364 5390
Ireland	01 431 1395	United States	1 800 535 4242
Italia	02 3604 7030	International Toll	+44 203 364 5390
Japan	+81 04-7129-2135		



**Kensington Computer Products Group**  
A Division of ACCO Brands  
11880 Foxglove Island Blvd., San Diego  
San Diego, CA 92168



**ACCO Brands Europe**  
A Division of ACCO Brands Europe  
Oxford House, Oxford Road  
Aylesbury, Buckinghamshire,  
MK44 8SD United Kingdom

**ACCO Brands Canada Inc**  
1331, Boulevard 101  
Mississauga,  
ON L5S 1C4  
Canada

**ACCO Brands Australia -**  
**Remington**  
J Computations Avenue  
Rings Park NSW 21148  
Australia

**Importado por ACCO Mexicana**  
**S.A. de CV.**  
Carretera Antea Industrial Norte S.S.  
Carretera Industrial Polos Lomas  
Jama México C.p. 50004  
E.C. 804548329-1 (V)

**ACCO Brands Chile S.A.**  
Avda. Presidente Ballesteros 1570,  
oficina 202  
Las Condes, Santiago  
Chile C.P. 7560234

**Importado e Distribuido por**  
**Elvira Productos de Papeleria Ltda.**  
CNPJ: 44.990.903/0001-60  
Rua Agostinho, 401 - Bairro/UF -  
Brasil CEP: 11043-400

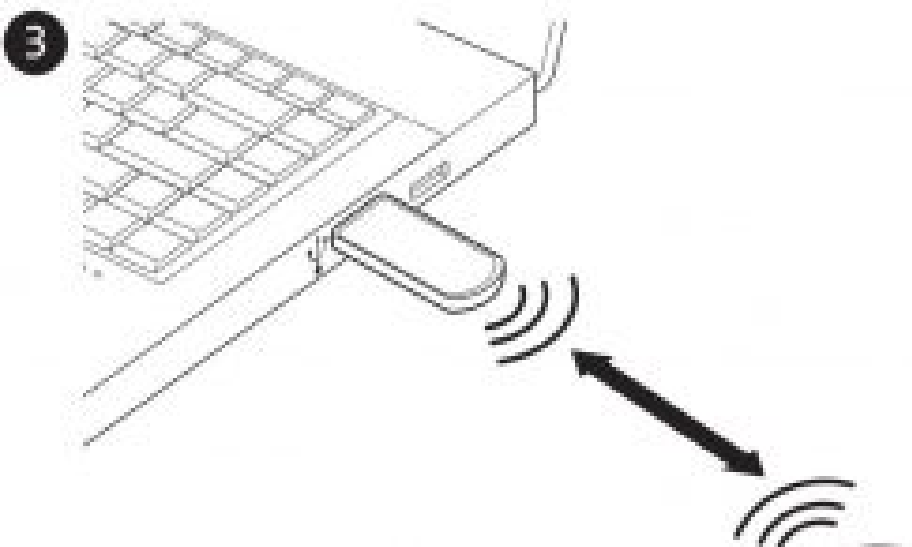
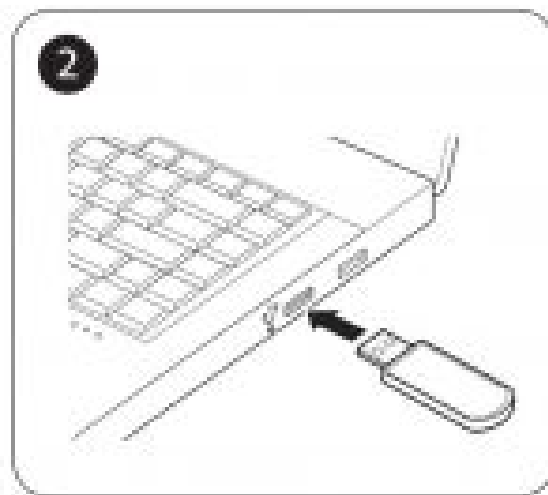
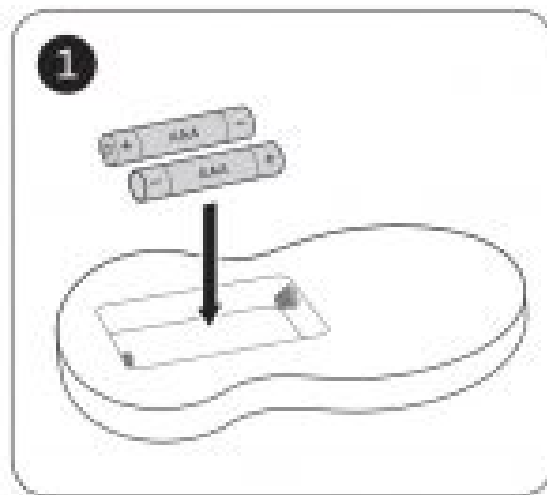
**Importeur**  
**LEITE ACCO Brands GmbH & Co KG**  
Steinbachstraße 64  
70468 Stuttgart  
Germany

**Distribuidor**  
**Exalta Informática, s.a.**  
R. Francisco I. S.  
241000 Santiago

**ACCO Brands Asia Pte Ltd**  
East #06-03,  
608830

5A Toh Guan Road  
Singapore  
Made in China

How to use

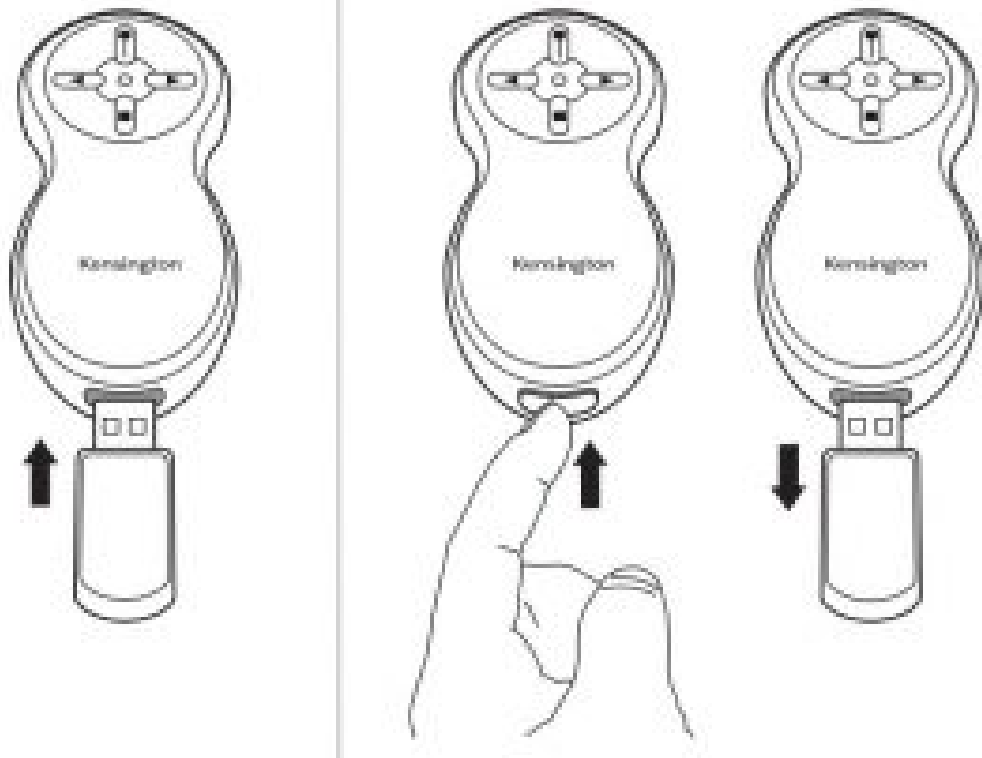


65' (20m) max.  
 20m max.  
 20 m (65 pēds) maximum  
 Max. 20 m  
 65' (20 m) máximo  
 20 m (65') max.  
 65 pol (20 m) no máximo  
 Maks. 20 m (65')  
 20 m (65') maks.  
 65' (20 m) max.  
 Maks. 20 m  
 Maks. 65' (20 m)  
 65' (20 m) maks.

Iki 65 pēdų (20 m)  
 Maks. 65' (20m)  
 Max 20 m  
 Max. 20 m  
 Max. 20 m (65')  
 65' (20m) max.  
 65' (20m) max.  
 Maks. 65' (20 m)  
 65' (20 m) maks.  
 65' (20 m) maks.  
 65' (20 m) maks.  
 65' (20 m) maks.  
 65' (20 m) maks.

65' (20 m) ماکس.





### CAUTION! IMPORTANT SAFETY INSTRUCTIONS

The Wireless Presenter with Laser Pointer includes a built-in laser pointer. Therefore, as with any laser pointer, it is important to adhere to the following warnings and safety instructions to prevent injury:

- Never shine a laser pointer into a person's eyes, or stare into the laser beam. Pointing a laser pointer into a person's eyes, or staring directly at the laser beam, can cause instant temporary vision dysfunction such as flash blindness, disorientation or glare. This can be particularly dangerous if the exposed person is engaged in a vision-critical activity such as driving. In addition, prolonged and/or repeated exposure to the laser beam can be hazardous and damaging to eyes.
- Never aim a laser pointer anywhere on any person or animal. Laser pointers are designed to illustrate inanimate objects only. In some states and provinces, it is illegal to aim a laser pointer on a law enforcement officer or on any other person. The purchaser/user is responsible for insuring that his or her use of the laser pointer conforms to any local laws.
- Do not point a laser pointer at mirror-like surfaces. A reflected beam can act like a direct beam on the eyes.
- Laser pointers are not toys. Do not allow a minor to use a pointer unsupervised. In some states and provinces, it is illegal for a minor to purchase and/or use a pointer. The purchase/ user is responsible for insuring that his or her purchase or use of the laser pointer conforms to any local laws.

### About your Wireless Presenter with Laser Pointer

- The receiver has a single light indicator with 2 colors, green and red. For every button press of the presenter, the receiver LED quickly flashes green on Presenter to indicate that the battery level is good. The LED will flash red on every button press if the battery level is low.
- The Wireless Presenter with Laser Pointer should work up to one year with the batteries that come with it. This is based on average use. To extend battery life when not in use, be sure to turn off the remote by inserting the receiver into the remote.

## CLASS 2 LASER SAFETY STATEMENT



This laser device complies with International Standard IEC 60825-1:2014 / EN 60825-1:2014, Class 2 Laser Product and also complies with 21 CFR 1040.10 and 1040.11, except for deviations pursuant to laser Notice No.50, dated Jun 24, 2007:



Please select your country specific safety warning sticker and adhere to the laser pointer

1. Emission of a parallel beam of visible light;
2. Maximum Power of 1 milliwatt CW, wavelength range 650+/-20 nanometers;
3. Operating temp between 0°C(32°F) to 40°C(104°F).

- Do not disassemble the device
- Do not use the device outside of its specified operating temperature range. If the device is exposed to an environment outside of its prescribed operation, turn off the device and allow the temperature to stabilize within the specified operating range before using the device.



A set of warning labels in different languages is provided with this product. It is essential that the correct country-specific warning label is applied to the laser pointer for the safety of the user and of the people nearby.



This device has no serviceable parts. Use of controls or adjustments or performance of procedures other than those specified herein may result in hazardous radiation exposure.



Documents / Resources



[Kensington Wireless Presenter with Laser Pointer](#) [pdf] User Guide  
Wireless Presenter with Laser Pointer, K33374, M01354-P, M01354-D