



Kensington Windows Fingerprint Provisioning Tool User Guide

[Home](#) » [Kensington](#) » Kensington Windows Fingerprint Provisioning Tool User Guide 

Contents

- [1 Kensington Windows Fingerprint Provisioning Tool](#)
- [2 INSTALLATION](#)
- [3 Documents / Resources](#)
- [4 Related Posts](#)

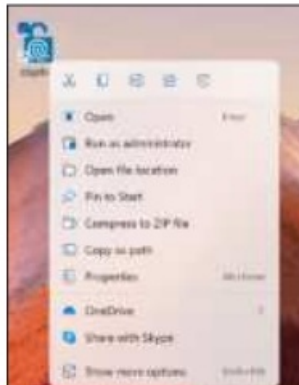
Kensington

Kensington Windows Fingerprint Provisioning Tool

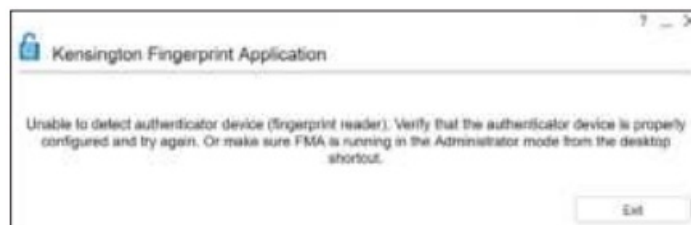


INSTALLATION

1. Download the Windows fingerprint tool from the support site
2. Double-click the capita-2.0.5-setup.exe file to install the tool. (Make sure you are running as administrator to provision the fingerprint on the dongle)
 - a. The “Ctapfma” tool will be added as a shortcut on the desktop.
3. Right-click and select run as administrator with the dongle connected to a USB port



a. If the tool is not executed as admin or the dongle is not connected to the device the following message will be displayed. Exit the tool and repeat step 3



4. After running the tool as administrator, it will ask you to create a PIN only if you haven't created one for sign-in options. If you have, continue to step 5



5. Enter your PIN to begin registering your fingerprints on the VeriMark dongle.



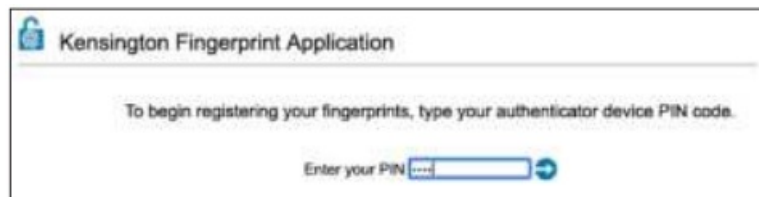
6. You can also reset the dongle



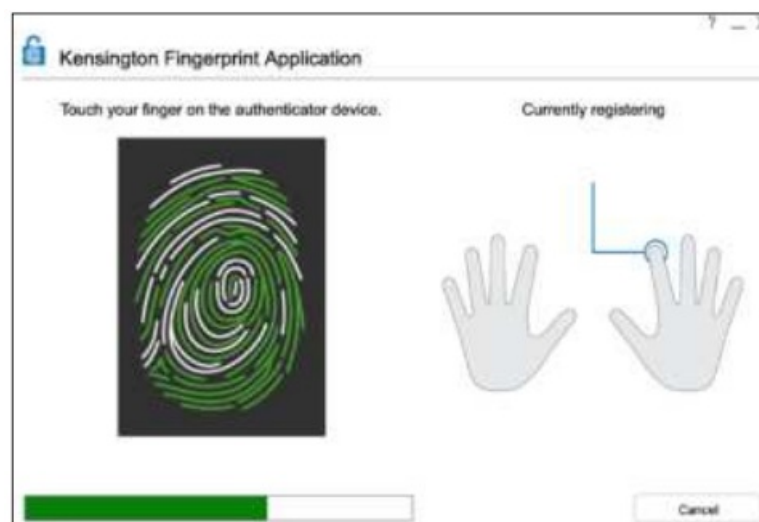
7. Or change your previously saved PIN



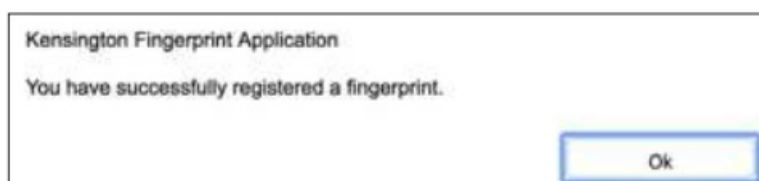
8. Click on the blue arrow next to the PIN to begin the fingerprint registration process



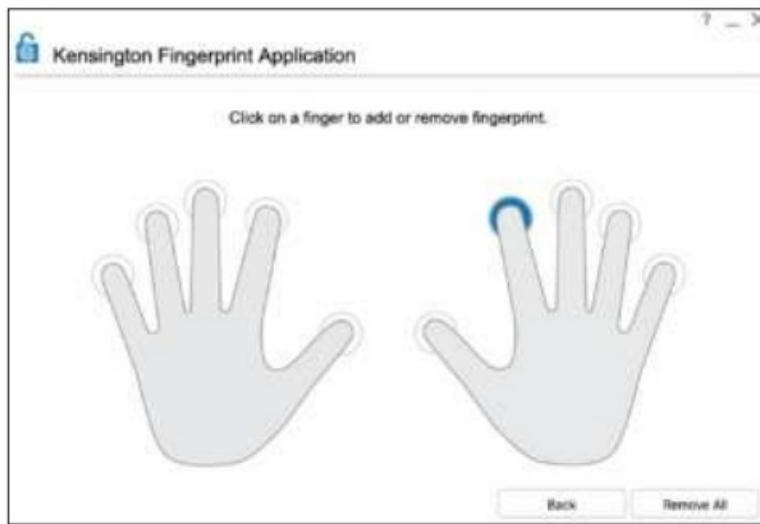
9. Select the fingerprint you want to enroll in and Tap the sensor area multiple times until the fingerprint enrollment is completed. Follow screen instructions




10. The tool will display the following window once a successful fingerprint enrollment is done. Click Ok and repeat step 13 to add another finger



11. Once the fingerprint enrollment finish. The tool will display a window showing which fingers have been enrolled. You can also remove all or simply close the tool to finish enrollment.



Documents / Resources

	<p>Kensington Windows Fingerprint Provisioning Tool [pdf] User Guide Windows Fingerprint Provisioning Tool, Windows, Fingerprint Provisioning Tool, Provisioning Tool, Fingerprint Tool</p>
---	---

[Manuals+.](#)