



Kensington K72426AMA Expert Wireless Presenter with Green Laser Pointer and Cursor Control User Guide

[Home](#) » [Kensington](#) » Kensington K72426AMA Expert Wireless Presenter with Green Laser Pointer and Cursor Control User Guide 

Contents

- [1 Kensington K72426AMA Expert Wireless Presenter with Green Laser Pointer and Cursor Control](#)
- [2 Product Information](#)
- [3 Product Usage Instructions](#)
- [4 FAQ](#)
- [5 HOW TO PAIR](#)
- [6 Documents / Resources](#)
 - [6.1 References](#)

Kensington®

Kensington K72426AMA Expert Wireless Presenter with Green Laser Pointer and Cursor Control



Product Information

Specifications

- **Wireless Frequency:** 2.4GHz
- **Transmission Range:** Up to 8 inches (20cm)
- **Power Switch:** ON/OFF
- **Black Screen Button:** Function Button

Product Usage Instructions

Pairing Guide:

1. Turn the power switch to the OFF position.
2. Press and hold the Black Screen Button.
3. While holding the Black Screen Button, turn the power switch to the ON position and continue to hold the button for three seconds.
4. The red LED light will flash three times and then turn off, indicating that the presenter is now in pairing mode.
5. Remove the 2.4 GHz dongle from the presenter.
6. Insert the dongle into an available USB-A port on the host computer.
 - **Note:** It is recommended to position the presenter no further than 8 inches (20cm) from the receiver for optimal performance.
7. After 5 seconds, press any button on the presenter. If the button is functional, the pairing was successful.

FAQ

- **Q: How do I know if the presenter is in pairing mode?**

A: When the red LED light flashes three times and then turns off, it indicates that the presenter is in pairing mode.

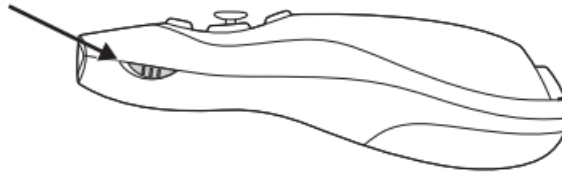
- **Q: Can I use the presenter without the dongle?**

A: No, the dongle is required for the presenter to work wirelessly with the host computer.

HOW TO PAIR

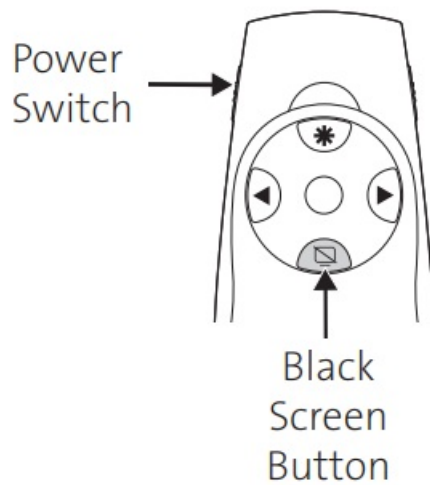
1. Turn power switch to “OFF” position.

1



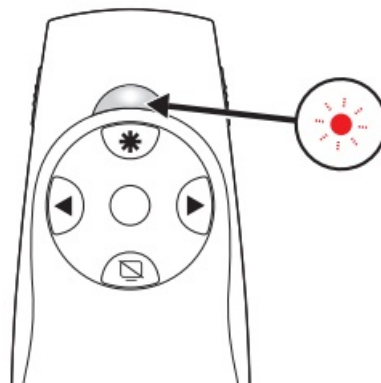
2. Press and hold the Black Screen Button, at the same time, turn the power switch to the “ON” position, continue to hold the Black Screen Button for three seconds.

2

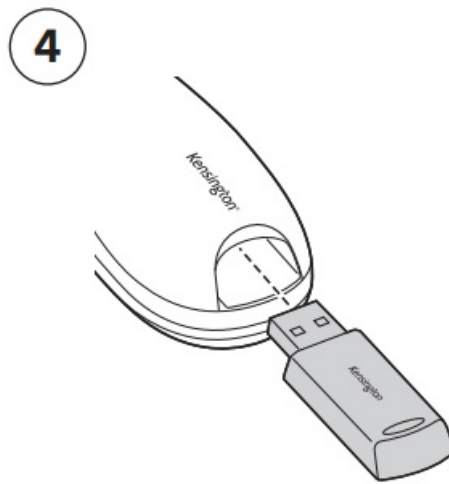


3. The red LED light will flash three times then turn off, the presenter is now in pairing mode.

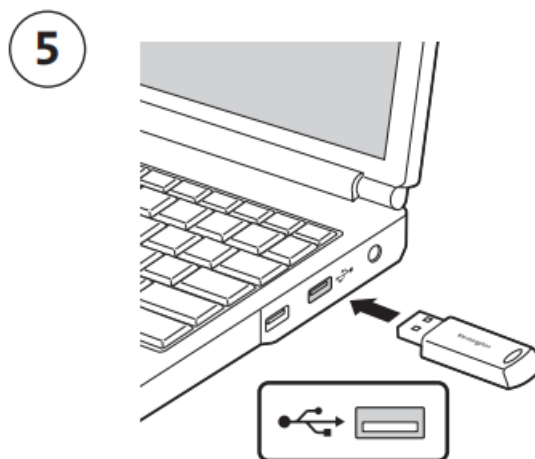
3



4. Remove 2.4 GHz dongle from the presenter.



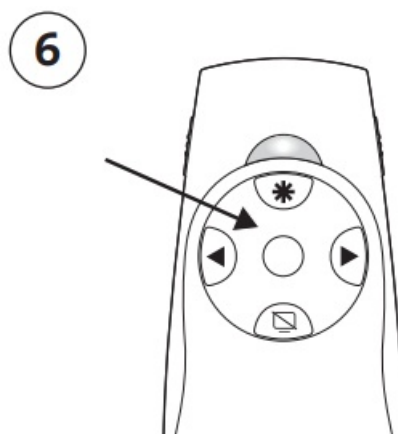
5. Insert the dongle into an available USB-A port on the host computer.




- **a.** It is recommended to position the presenter no further than 8 inches (20cm) from the receiver.



6. After 5 seconds press any button. If button is functional, the pairing was successful.



Documents / Resources

	<p>Kensington K72426AMA Expert Wireless Presenter with Green Laser Pointer and Cursor Control [pdf] User Guide</p> <p>K72426AMA Expert Wireless Presenter with Green Laser Pointer and Cursor Control, K72426AMA, Expert Wireless Presenter with Green Laser Pointer and Cursor Control, Green Laser Pointer and Cursor Control, Pointer and Cursor Control, Cursor Control</p>
---	---

References

- [User Manual](#)