

KENRONE KB161 Smart Lock Key Box



KENRONE KB161 Smart Lock Key Box User Manual

[Home](#) » [KENRONE](#) » KENRONE KB161 Smart Lock Key Box User Manual 

Contents

- [1 KENRONE KB161 Smart Lock Key Box](#)
- [2 Product Usage Instructions](#)
- [3 Basic Information](#)
- [4 SPECIFICATION](#)
- [5 Tuya Smart Operation Instructions](#)
- [6 Bluetooth Pairing Connection](#)
- [7 Temporary Code Unlocking Setting:](#)
- [8 Add Unlock Keys](#)
- [9 Factory Setup](#)
- [10 Documents / Resources](#)
 - [10.1 References](#)



KENRONE KB161 Smart Lock Key Box



Product Specifications:

- Valid Password Length: 6-8 Digits (Not Included in Type 1)
- Key Capacity: 100 User Passwords (Not Included in Type 1), 50 Fingerprints
- Input Voltage: 4.5V ~ 5.5V
- Working Temperature: -20°C to +60°C
- Storage Temperature: -20°C to +60°C
- Working Humidity: 10% ~ 90%RH
- Low Voltage Alarm: 3.6V
- Charging Interface: TYPE-C

Product Usage Instructions

Tuya Smart Operation Instructions:

1. Download and Install the Tuya Smart App from the App Store or Google Play Store.
2. Pair the smart lock with your phone via Bluetooth following the on-screen instructions.

App Interface Description & Function Brief Introduction:

- The operation log in the app provides details such as unlock records, methods, adding/deleting passwords/fingerprints, low battery alerts, and modifying unlocking time limits.
- To set temporary code unlocking settings (Type 2 only), navigate to the specific settings and choose between limited-time usage, one-time usage, or clearing the temporary code.

Add Unlock Keys:

Slide left to close the lock and slide right to unlock.

Factory Setup:

Follow the factory setup instructions provided in the manual for initial configuration.

Membership Management:

Add member accounts by entering the member's name and account details. Set member's fingerprint or code accordingly.

Intelligence Application Scenes:

Receive notifications when family members arrive home and get alerts for abnormal activities. Enable/disable these notifications as per your preferences.

Tips:

- Type 1 can only be added with fingerprints, while Type 2 can be added with fingerprints and passwords.
- Set effective times for unlocking methods as needed.

Frequently Asked Questions (FAQ):

- Q: How many user passwords can be stored in Type 1?
A: Type 1 does not support user passwords; it only allows fingerprint recognition for access.
- Q: What does the LED status indication signify?
A: Blue indicates Configuration Mode or Low Voltage Reminder, Green indicates Correct Operation, Red indicates Wrong Operation, and White represents Standby Mode.

Basic Information

- Valid Password Length: 6-8 Digits (No Included in Type 1)
- Key Capacity: 100 User Passwords (No Included in Type 1) 50 Fingerprints
- Any fingerprint can unlock the box in factory mode

LED Status Indication:

Blue: In Configuration Mode, Low Voltage

Reminder

- Green: Correct Operation
- Red: Wrong Operation
- White: Standby Mode

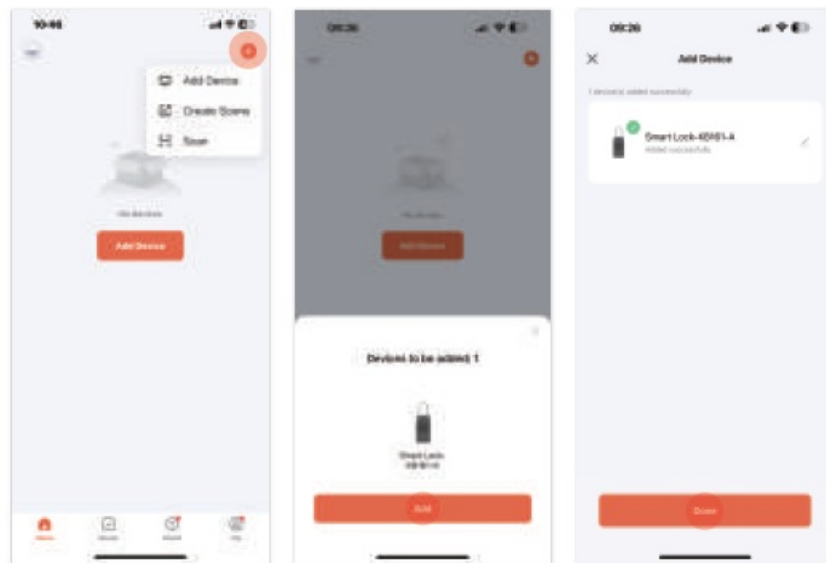
SPECIFICATION

- Input Voltage: 4.5V ~ 5.5V
- Working Temperature: -20°C +60°C
- Storage Temperature: -20°C +60°C
- Working Humidity: 10% ~ 90%RH
- Low Voltage Alarm: $\leq 3.6V$
- Charging Interface: TYPE-C

Tuya Smart Operation Instructions

Download and Install

1. Scan the QR code below to download the APP. (Tips: It can also download“ TUYA Smart” from Apple Store/Android Market.)
2. Finish the download, then click the operations below to follow: “ Install from App Gallery” →“ Open” →“ Agree”.
3. Log in via email or phone number, then click “ getting verification code” to enter.
(**Tips:** It can select the country/region as your condition through the system's default settings.)



Bluetooth Pairing Connection

(**Note:** Keep your phone close to the lock during the process)

1. Open Tuya APP, click the “+” sign in the upper right corner, and select “Add Device”.
2. Wake up the smart lock, and click“ Add” after the lock appearing on the phone interface.
3. Waiting for the addition to be successful. After “√” appears, the Bluetooth connection will be well done. Then clicking“ Done”.

App Interface Description & Function Brief Introduction



The operation records that can be viewed in the operation log including:

- Unlock Records;
- Unlock Methods;
- Add/Delete Passwords/Fingerprints;
- Add/Delete Users;
- Low battery alert;
- Modify Unlocking Time Limit, such as user unlocking time limit, temporary password unlocking time limit, etc

Temporary Code Unlocking Setting:

- Limited Time Using Temporary Code;
- One-Time Using Temporary Code;
- Clear the Temporary Code.

Tips:

1. It can manually set code OR create random code through the system.
2. It can set the starting & ending using the time of the temporary code.
3. It can share temporary codes with others via SMS or social media.

Membership Management:

- Add Member Account Click the "+" sign in the upper right corner and choose "ADD MEMBER", then input your member name and member account to save);
- Enter Member Account to Set Member's Fingerprint/Code

Intelligence Application

Scenes:

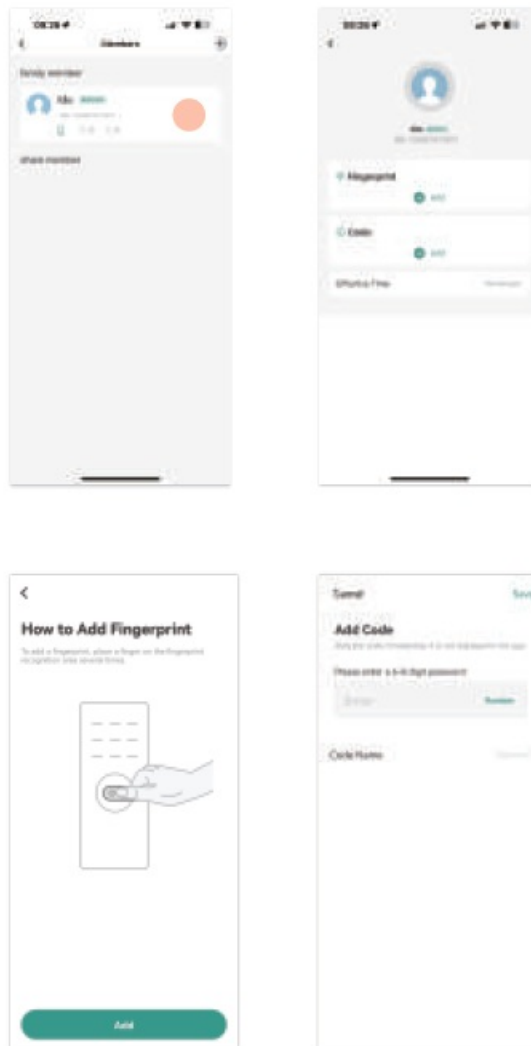
- When the family member comes home, it can receive a notification from the lock system;
- If there is an abnormal alarm, it can receive a notification from the lock system.

Tips:

1. The two scenes can be enabled/disabled.
2. There are 3 types of notifications to choose:
① Message Center ② SMS Notification ③ Telephone Notification
3. The realization of the scenes requires the use of a smart lock and gateway.

Add Unlock Keys

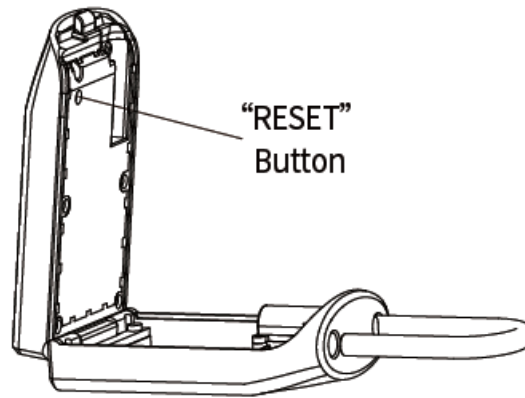
Please add the unlock method and set the effective time according to the following tips in member management.
(Type 1 can only be added with a fingerprint;
Type 2 can be added with fingerprint and password.)



Factory Setup

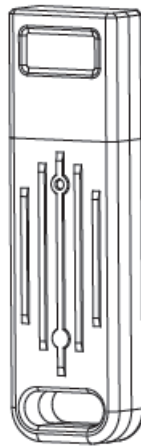
- Option 1: Press “RESET” Button

Long press the “RESET” button for 3 seconds, the buzzer beeps “Di” for once, and the LED flashes in green for once. Then the initialization is successful.



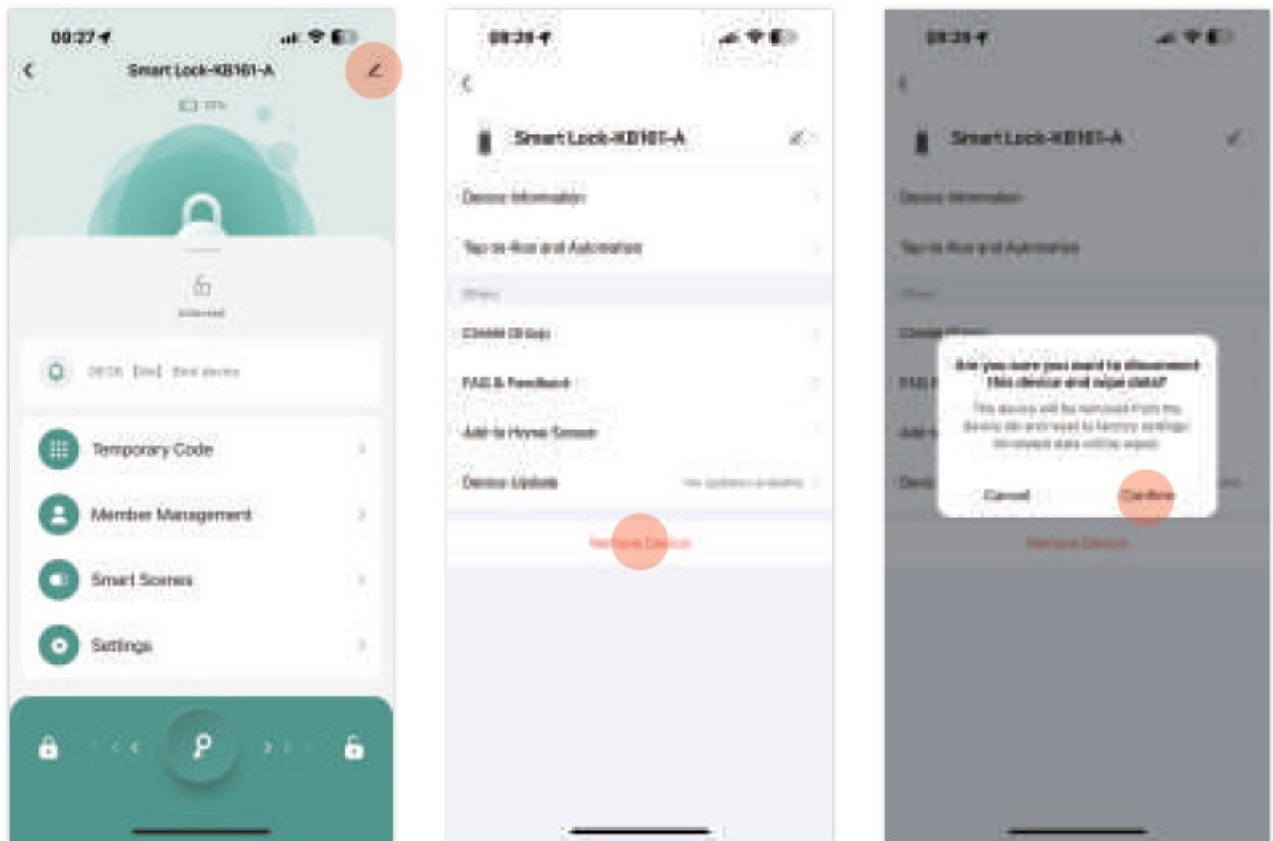
- Option 2 Electronic Key

Insert the emergency electronic key into the Type-C port, the key box will be initialized and opened automatically (Please keep it in a safe place)

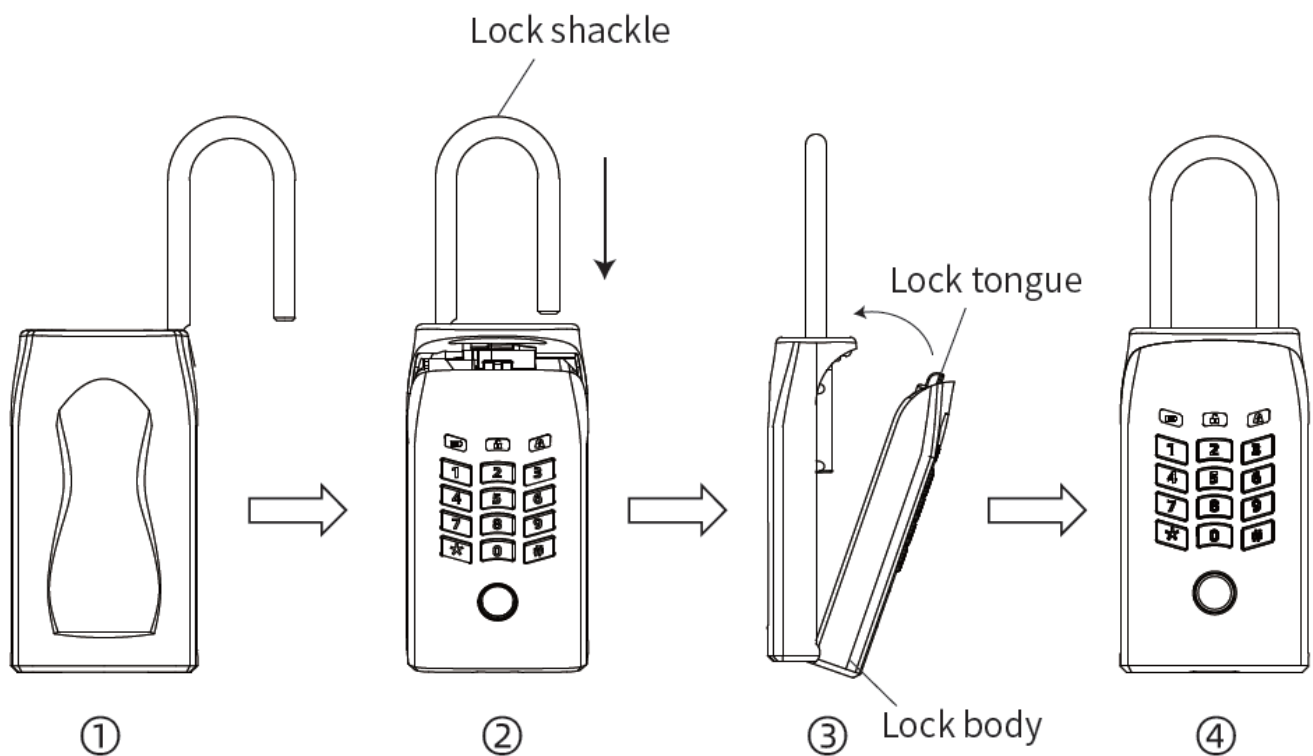


- Option3 Remove Device

After doing the following, the device will be removed from the device list and reset to factory settings. All related data will be wiped.



Note



Follow these steps when locked:


1. Put the shackle through the fixed hole or railing.
2. Turn the lock body so that the lock shackle is aligned with the shackle of the lock body, and press the lock shackle down.
3. Close the lock body.

4. Verify the key or swipe left at the bottom of the

APP homepage. At this time, the lock tongue is stretched out and locked successfully.

(**Tip:** If automatic locking is set in the APP, please ignore the last step)

Documents / Resources

	KENRONE KB161 Smart Lock Key Box [pdf] User Manual KB161 Smart Lock Key Box, KB161, Smart Lock Key Box, Lock Key Box, Key Box, Box
---	---

References

- [User Manual](#)

[Manuals+](#), [Privacy Policy](#)

This website is an independent publication and is neither affiliated with nor endorsed by any of the trademark owners. The "Bluetooth®" word mark and logos are registered trademarks owned by Bluetooth SIG, Inc. The "Wi-Fi®" word mark and logos are registered trademarks owned by the Wi-Fi Alliance. Any use of these marks on this website does not imply any affiliation with or endorsement.