

KEMPPI

**KEMPPI S1030
Automatically
Dimming Welding
Helmets**



KEMPPI S1030 Automatically Dimming Welding Helmets User Manual

[Home](#) » [KEMPPI](#) » KEMPPI S1030 Automatically Dimming Welding Helmets User Manual 

Contents

- [1 KEMPPI S1030 Automatically Dimming Welding Helmets](#)
- [2 FAQs](#)
- [3 Documents / Resources](#)
 - [3.1 References](#)
- [4 Related Posts](#)

KEMPPI

KEMPPI S1030 Automatically Dimming Welding Helmets



Specifications

- Manufacturer: KMP
- Standard Reference: EN 175
- Classification: CE
- Maximum Filter Shade: 13
- Optical Class: 1
- Light Diffusion Class: 1
- Angle Dependence Class: 1

Adjusting the Headband

To adjust the headband, follow these steps:

1. Locate the adjustment mechanism on the headband.
2. Slide the mechanism to adjust the size according to your head.
3. Ensure a secure and comfortable fit before use.

Welding Process Compatibility

The welding helmet is compatible with the following welding processes:

- Covered electrodes
- MAG
- TIG
- MIG with heavy metals
- MIG with light alloys
- Air-arc gouging
- Plasma jet cutting

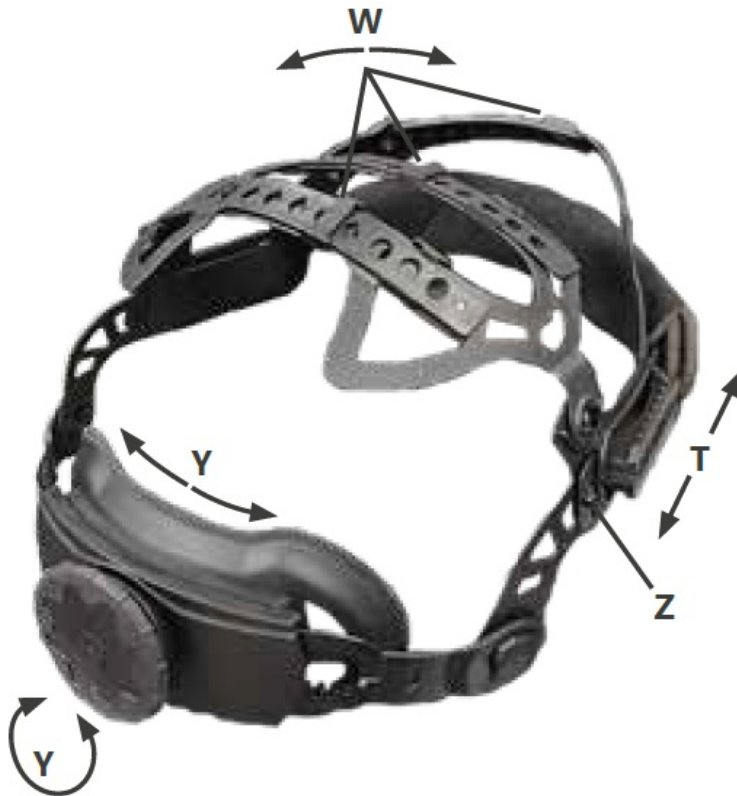
- Microplasma arc welding

Adjusting Shade Level for Welding Process

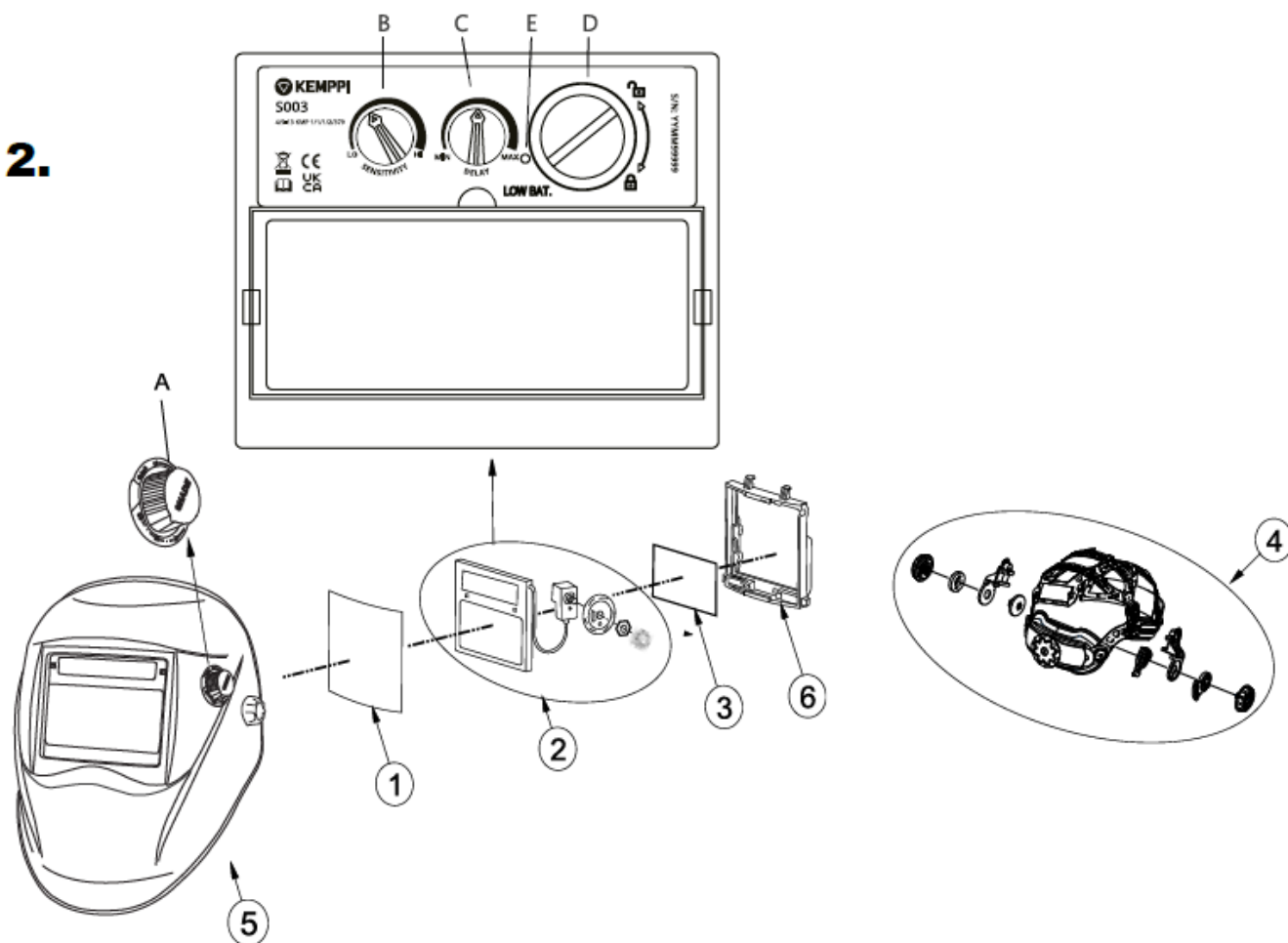
To adjust the shade level for different welding processes and currents refer to the provided chart for recommended settings based on the type of welding being performed.

User and maintenance manual

1.



2.



Welding process	A (Current)																						
	1.5	6	10	15	30	40	60	70	100	125	150	175	200	225	250	300	350	400	450	500	600		
Covered electrodes	8							9		10		11		12			13			14			
MAG	8							9	10		11			12			13			14			
TIG	8				9			10		11			12			13		14					
MIG with heavy metals	9					10					11		12		13		14						
MIG with light alloys	10					11					12		13		14								
Air-arc gouging	10					11					12		13		14		15						
Plasma jet cutting	9					10					11		12			13							
Microplasma arc welding	4	5		6		7	8		9	10		11		12									

Declarations of Conformity
userdoc.kemppi.com



FAQs

What is the maximum filter shade supported by this welding helmet?

The welding helmet supports a maximum filter shade of 13.

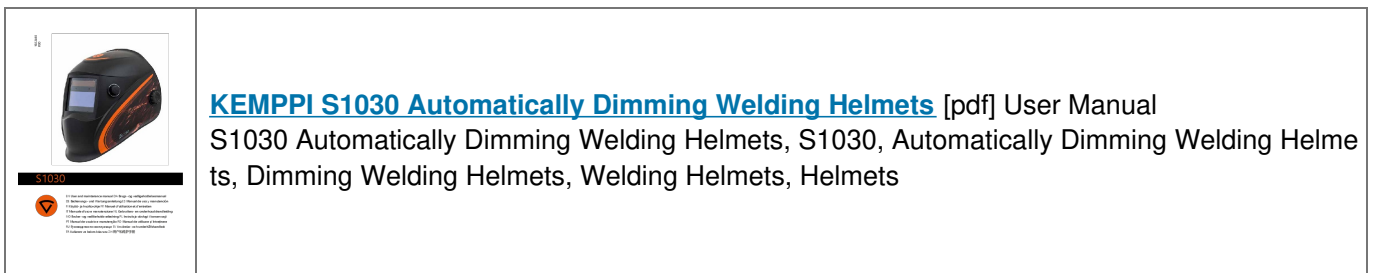
Which welding processes are compatible with this helmet?

This helmet is compatible with covered electrodes, MAG, TIG, MIG with heavy metals, MIG with light alloys, air-arc gouging, plasma jet cutting, and micro plasma arc welding processes.

How do I adjust the headband for a comfortable fit?

To adjust the headband, locate the adjustment mechanism and slide it to fit your head size securely and comfortably.

Documents / Resources



References

-  Redirecting
- User Manual

[Manuals+](#), [Privacy Policy](#)

This website is an independent publication and is neither affiliated with nor endorsed by any of the trademark owners. The "Bluetooth®" word mark and logos are registered trademarks owned by Bluetooth SIG, Inc. The "Wi-Fi®" word mark and logos are registered trademarks owned by the Wi-Fi Alliance. Any use of these marks on this website does not imply any affiliation with or endorsement.