



KEMIMOTO B0106-08901BK RGB LED Rear View Center Mirror with Bluetooth Instruction Manual

[Home](#) » [KEMIMOTO](#) » KEMIMOTO B0106-08901BK RGB LED Rear View Center Mirror with Bluetooth Instruction Manual 



Installation Tips
SKU ► B0106-08901BK

Complete journey of dreams

Designed by Kem moto Group Web: www.kemimoto.com

Contents

- [1 BEFORE YOU BEGIN](#)
- [2 IMPORTANT](#)
- [3 INSTALLATION TIPS:](#)
- [4 FUNCTION DESCRIPTION:](#)
- [5 Documents / Resources](#)
- [6 Related Posts](#)

BEFORE YOU BEGIN

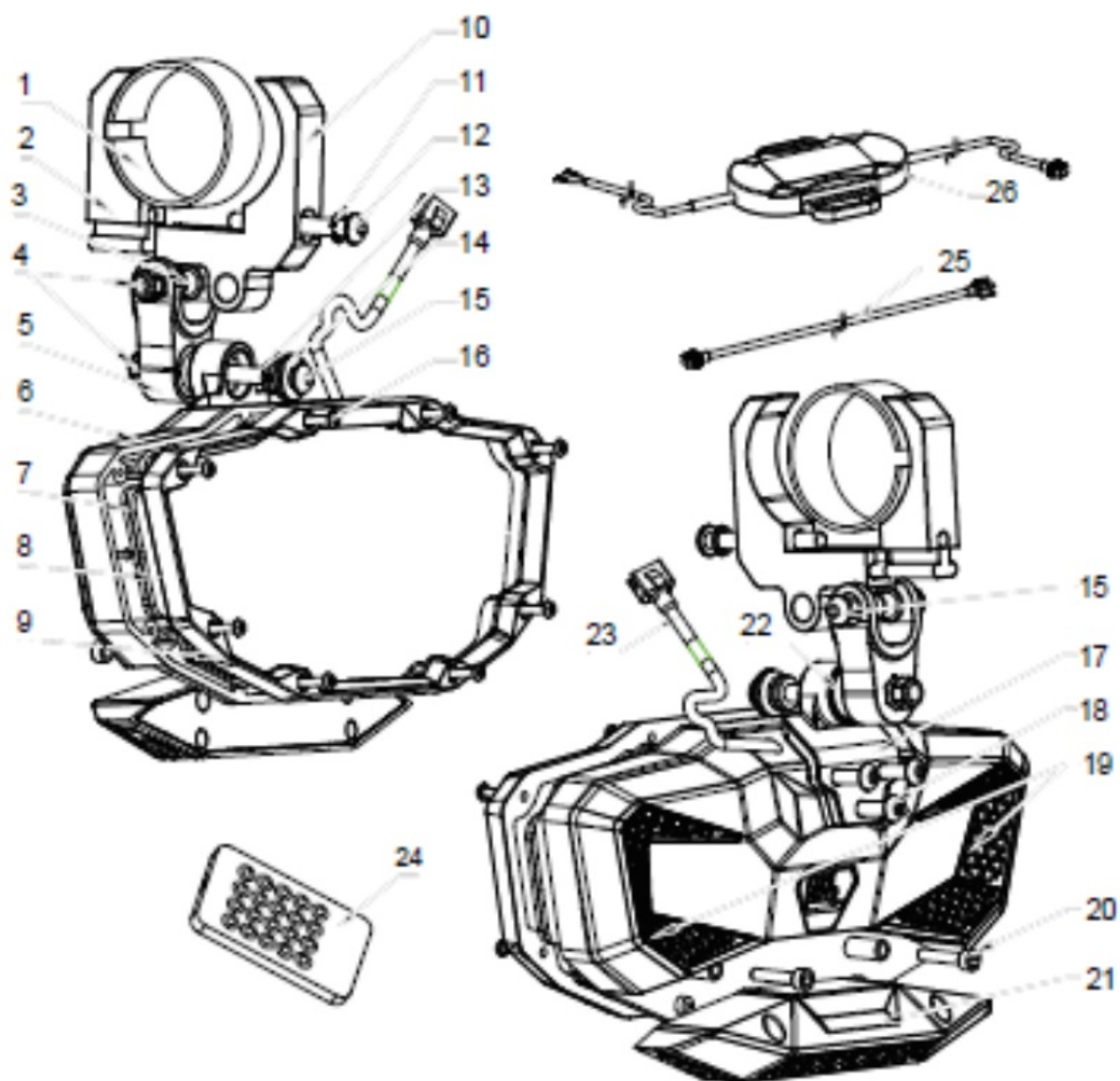
1. Read these instructions and the deck to be sure all parts and tools are accounted for.
2. Please retain these nostalgia instructions for future reference and parts ordering information_

IMPORTANT

1. Please read the installation instructions carefully before you start.
2. If the vehicle is clean and free of other debris, it will be easy to install.
3. For your safety and to ensure a satisfactory Installation. please complete all the installation steps in the order shown below.

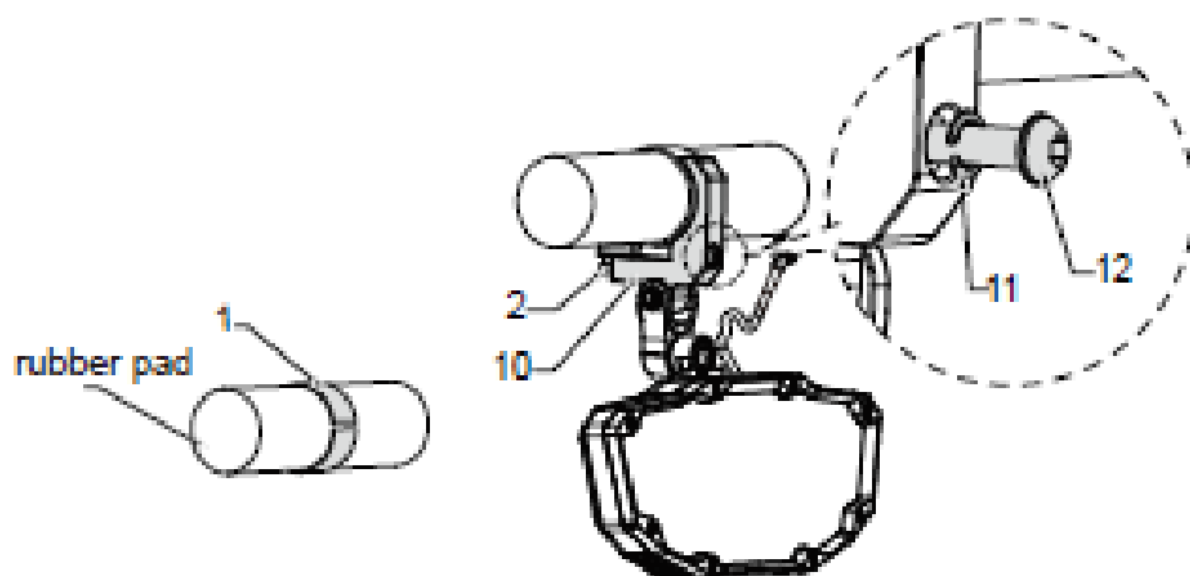
PRODUCT INFORMATION:

1. Rubber Pad	x1
2. Pipe Clamp -1	x1
3. T-type POM Sleeve	x2
4. M6 Lock Nut	x2
5. Y-type Bracket	x1
6. Mirror Shell	x1
7. EVA Explosion-proof Film	x1
8. Convex Mirror R1300	x1
9. Metal Frame	x1
10. Pipe Clamp-2	x1
11. M6 Metal Spring Washer	x1
12. Mds L50 Hexagon Socket Screw	x1
13. Plane Bearing	x1
14. M6' D15' 1.5 Metal Gasket	x2
15. M6'L30 Hexagon Socket Heac Screw	x2
16. M31L12 Self-tat: gong Screw	x8
17. Support	x1
18. M5' L20 Hexagon Socket Screw	x3
19. RGB Light 20. M3'L	x1
20 Hexagon Socket Screw	x2
21. Reading light (Emergency light)	x1
22. POM Ball Head	x1
23. Power Cord	x1
24. Bluetooth Remote Control	x1
25. Power Extension Cad	x1
26. Bluetooth Controller	x1



INSTALLATION TIPS:

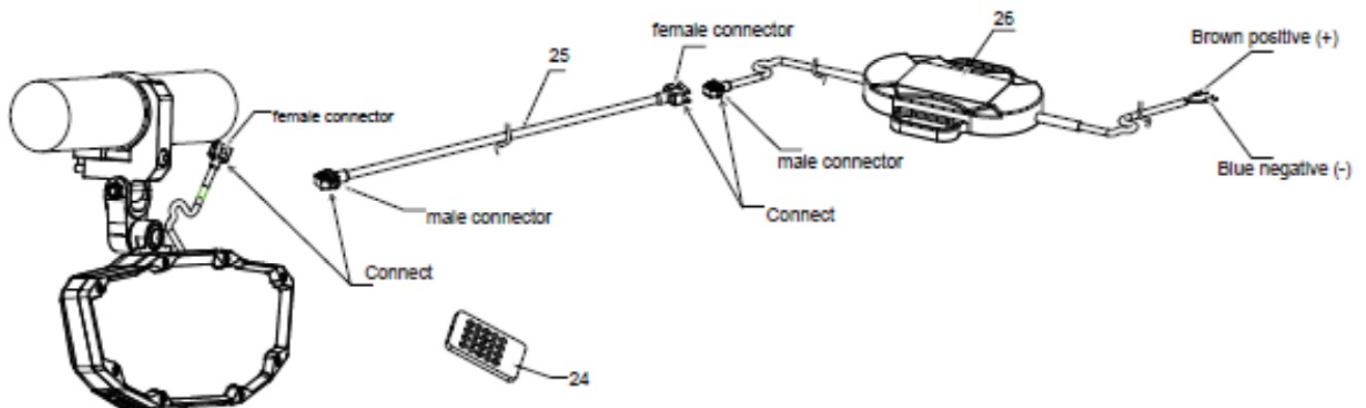
STEP 1



Step 1

Place rubber pad Mat roll bar. Instal pipe ciarnp-1 [2] and c ce. damp110] with spring washer [11] and screw 112].

STEP 2

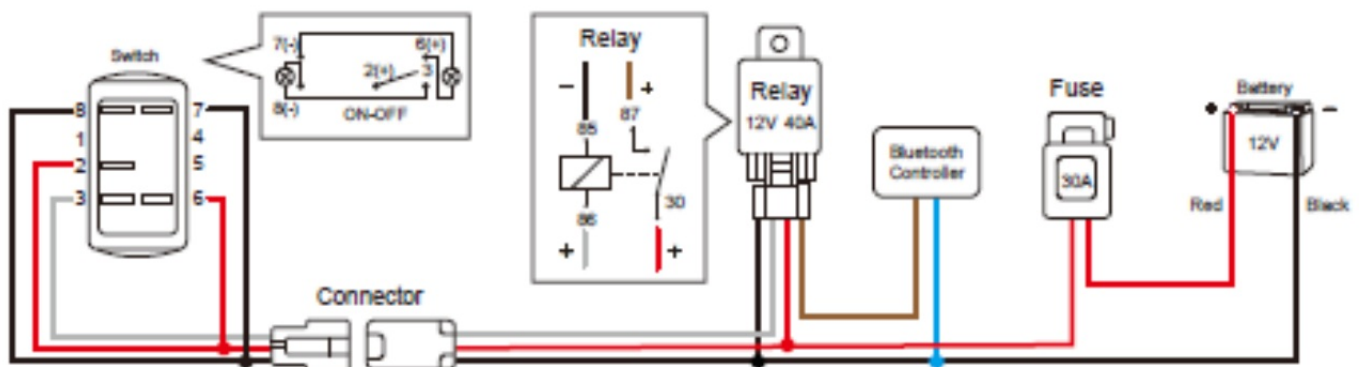


Step 2

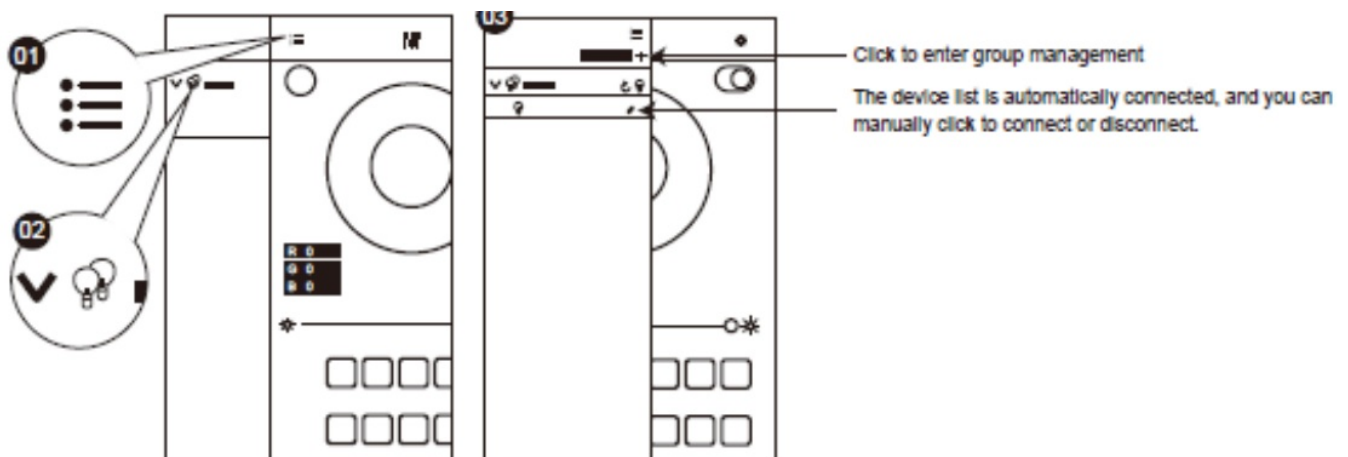
Conned the mirror, extension cord 125) and Bluetooth controller [26] Then attach the Bluetooth controller (28] b relay:+) and vehicle power supply;-;

WIRING DIAGRAM:

NOTE: -The wet '1, contrail: relay and tee shawl h the DIAGRAM are not Enchklea rn our prtlluct – The battery is your ride power napes_



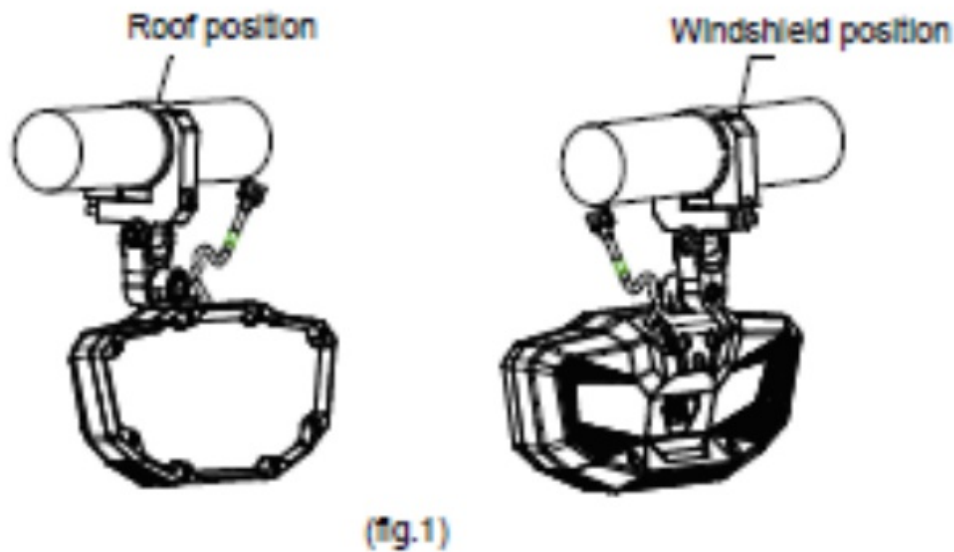
STEP3



Step 3

Scan the QR code on the controller 1241 download the control APP then open the APP and connect to Bluetooth to control the RGB lights. Or you can control the RGB lights with the Bluetooth remote control [24] directly.

FUNCTION DESCRIPTION:



1. It fits 1.5-2.0 inch diameter roll bar.
2. As '59.1 the mirror will not affect the installation of the windshield and the roof, which perfectly solves the problem that the three cannot coexist
3. As fig 2, the mirror can be swung front and back at about 180° As fig 3, the mirror can be swung left and right at about 220°. Tighten the screw [5] after finishing adjustment

NOTE Adding a through pin can increase the working arm of the wrench, which makes it easier to tighten the screw [15].

4. As fig.4, about the reading light [21]: 1. The reading light [21] is powered by an independent battery and needs to be charged. (TYPE C Input – Charging time: 2.5 hours)
 - Full charge endurance: 3 hours
 - The switch will turn red when charging
 - The reading light will go out when fully charged

NOTE: If you find the reading light [21] can not light on after receiving our product, please charge it fully first.

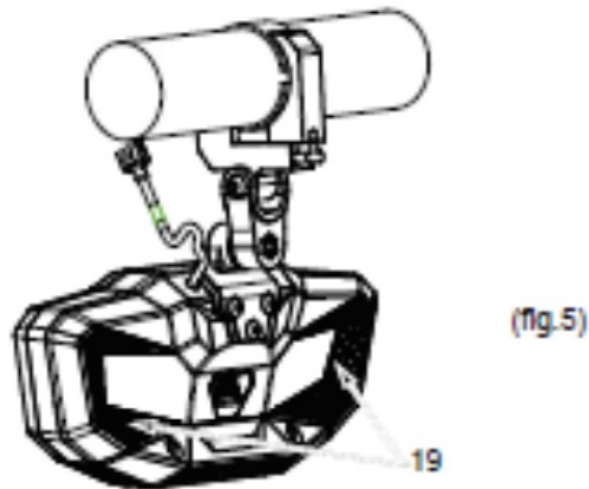
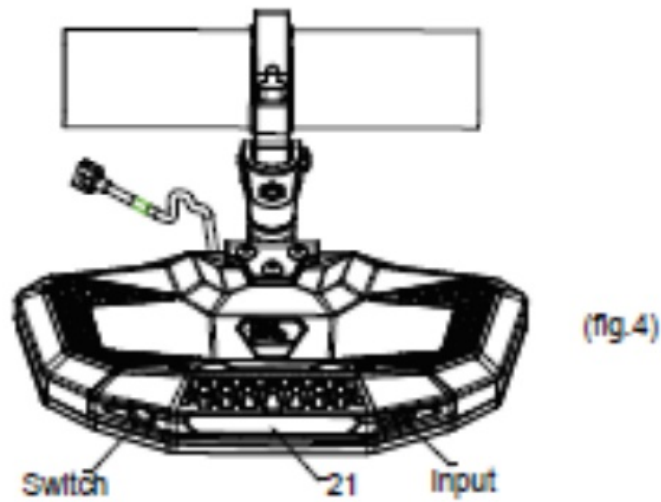
2. Light colors Red, white and green. 3. Light mode Monochromatic constant light and monochromatic flashing

4. Light control:

- Short press the switch to light on
- Short press the switch to change light color and light mode
- Long press the switch over 3 seconds to light off.

5. Battery: Capacity 850mAh; Voltage 4.2V; Current 500mA. USB Charging Cable: Voltage 5V. Current 1A

5. As fig.5. the RGB light [19] can be controlled by APP or remote control [24].



FCC Statement

Changes or modifications not expressly approved by the party responsible for compliance could void the user's authority to operate the equipment.

This equipment has been tested and found to comply with the limits for a Class B digital device, pursuant to Part 15 of the FCC Rules. These limits are designed to provide reasonable protection against harmful interference in a residential installation. This equipment generates uses and can radiate radio frequency energy and, if not installed and used in accordance with the instructions, may cause harmful interference to radio communications. However, there is no guarantee that interference will not occur in a particular installation. If this equipment does cause harmful interference to radio or television reception, which can be determined by turning the equipment off and on, the user is encouraged to try to correct the interference by one or more of the following measures:

- Reorient or relocate the receiving antenna.
- Increase the separation between the equipment and receiver.
- Connect the equipment into an outlet on a circuit different from that to which the receiver is connected.
- Consult the dealer or an experienced radio/TV technician for help

This device complies with part 15 of the FCC rules. Operation is subject to the following two conditions (1) this device may not cause harmful interference, and (2) this device must accept any interference received, including interference that may cause undesired operation. This equipment complies with FCC radiation exposure limits set forth for an uncontrolled environment. This equipment should be installed and operated with a minimum distance 20cm between the radiator & your body.

Documents / Resources

	<p>KEMIMOTO B0106-08901BK RGB LED Rear View Center Mirror with Bluetooth [pdf] Instru ction Manual</p> <p>B0106-08901BK, B010608901BK, 2A449B0106-08901BK, 2A449B010608901BK, RGB LED R ear View Center Mirror with Bluetooth, B0106-08901BK RGB LED Rear View Center Mirror with Bluetooth</p>
---	---

[Manuals+](#)