

KEITHLEY KickStart Software User Guide

[Home](#) » [KEITHLEY](#) » KEITHLEY KickStart Software User Guide 

KEITHLEY KickStart Software
User Guide



Contents

- 1 Safety precautions
- 2 KickStart software
- 3 Manage licenses
- 4 Install a license
- 5 Maintenance and Checkout defined
- 6 Export selected data
- 7 Documents / Resources
 - 7.1 References
- 8 Related Posts

Safety precautions

Before using this product, see the safety precautions associated with your instrument. The instrumentation associated with this software is intended for use by personnel who recognize shock hazards and are familiar with the instrument safety precautions to avoid possible injury or death. Read and follow all installation, operation, and maintenance information carefully before using any instrument.

Refer to the instrument user documentation for complete product specifications. If the product is used in a manner not specified, the protection provided by the product warranty may be impaired.

Safety precaution revision as of January 2018.

KickStart software

KickStart allows you to create apps, manipulate settings, and view and export previous runs without a license. However, to run an app or communicate with and control an instrument, KickStart software requires a license. You can launch a one-time trial for the KickStart Apps.

Go to tek.com/keithley-kickstart and you will see information about the software. On this page you can also download free trial software and buy or request a quote. Once you purchase KickStart you will have access to all of the base KickStart apps with a floating license. A floating license allows you to manage the transfer of individual license files to different computers.

Manage licenses

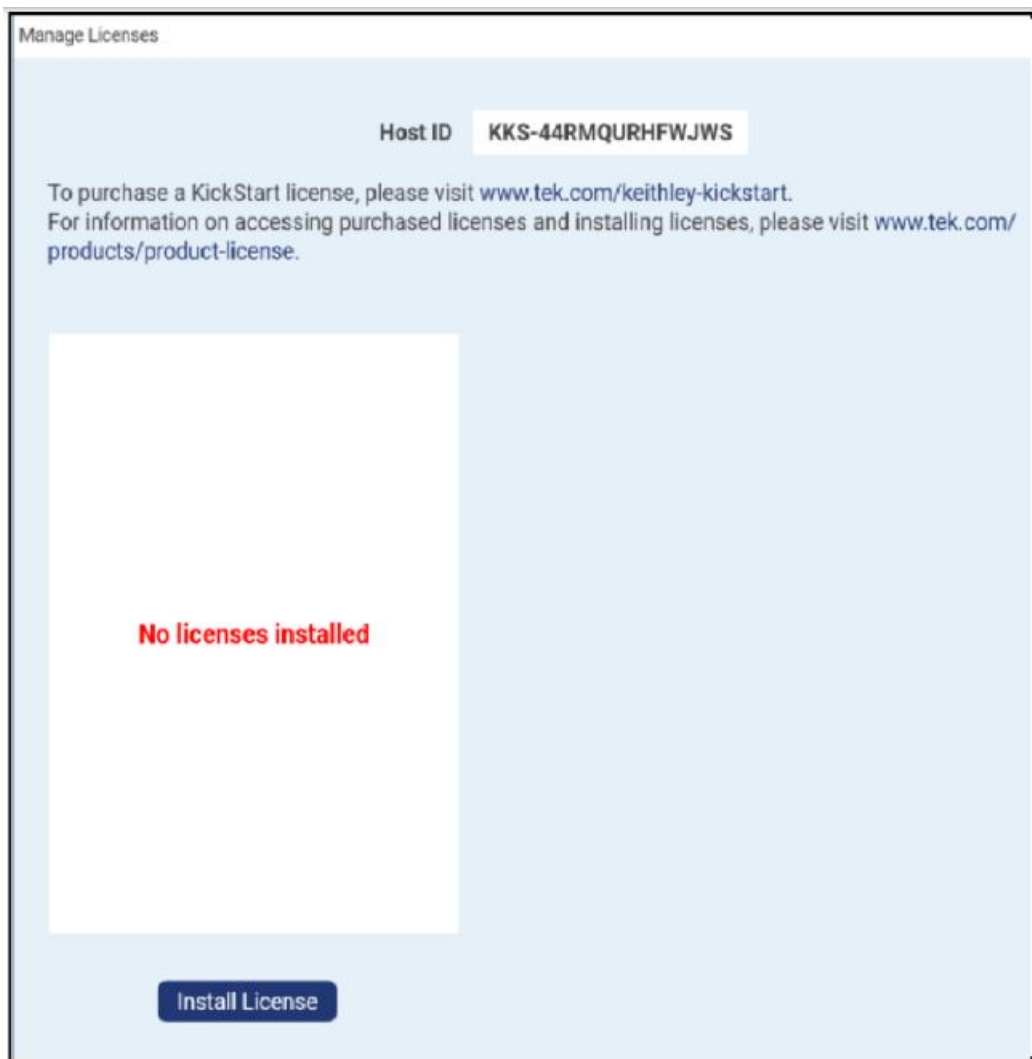
You can maintain your licenses from within KickStart. The KickStart software license provides access to KickStart applications and features. A license is activated either by purchasing the software or through a trial. A trial will allow you to use full functionality for a limited period of time.

To install or remove a license, select the key icon .

You can also view previously entered licenses and the dates and times for when the licenses were entered and checked out and when they expire.


Each license entitles you to support by Tektronix worldwide technical support centers and field applications engineers.

Install a license



KickStart software licenses are managed using the Tektronix Asset Management System (TekAMS). Each KickStart license is valid for a single computer at a time. Use TekAMS to check out the license for your computer so that you can move the license to a different computer. That process is described on the next page. The email address of the primary user or administrator who manages the license is the license key manager. Key managers are authorized to add users who can then access these licenses and assign them to specific instruments and computers. For more information on TekAMS, see tek.com/products/product-license.

To generate a license file, you must submit your **Host ID** to TekAMS. The **Host ID** is located at the top of the **Manage Licenses** window.

Download the license file from TekAMS and transfer it to the computer that will run KickStart software. Open KickStart software and select the key icon . Using the **Manage Licenses** window, select **Install License** and browse to the downloaded license file. After the license is entered, the license and its details are viewable.

Maintenance and Checkout defined

Manage Licenses

Host ID KKS-PQ55HPFJR8MHE

To purchase a KickStart license, please visit www.tek.com/keithley-kickstart.
For information on accessing purchased licenses and installing licenses, please visit www.tek.com/products/product-license.

High Resistivity

KickStart Suite

Maintenance

Expires on 10/13/2021

Checkout

Expires on 10/13/2021

Advanced

Install License

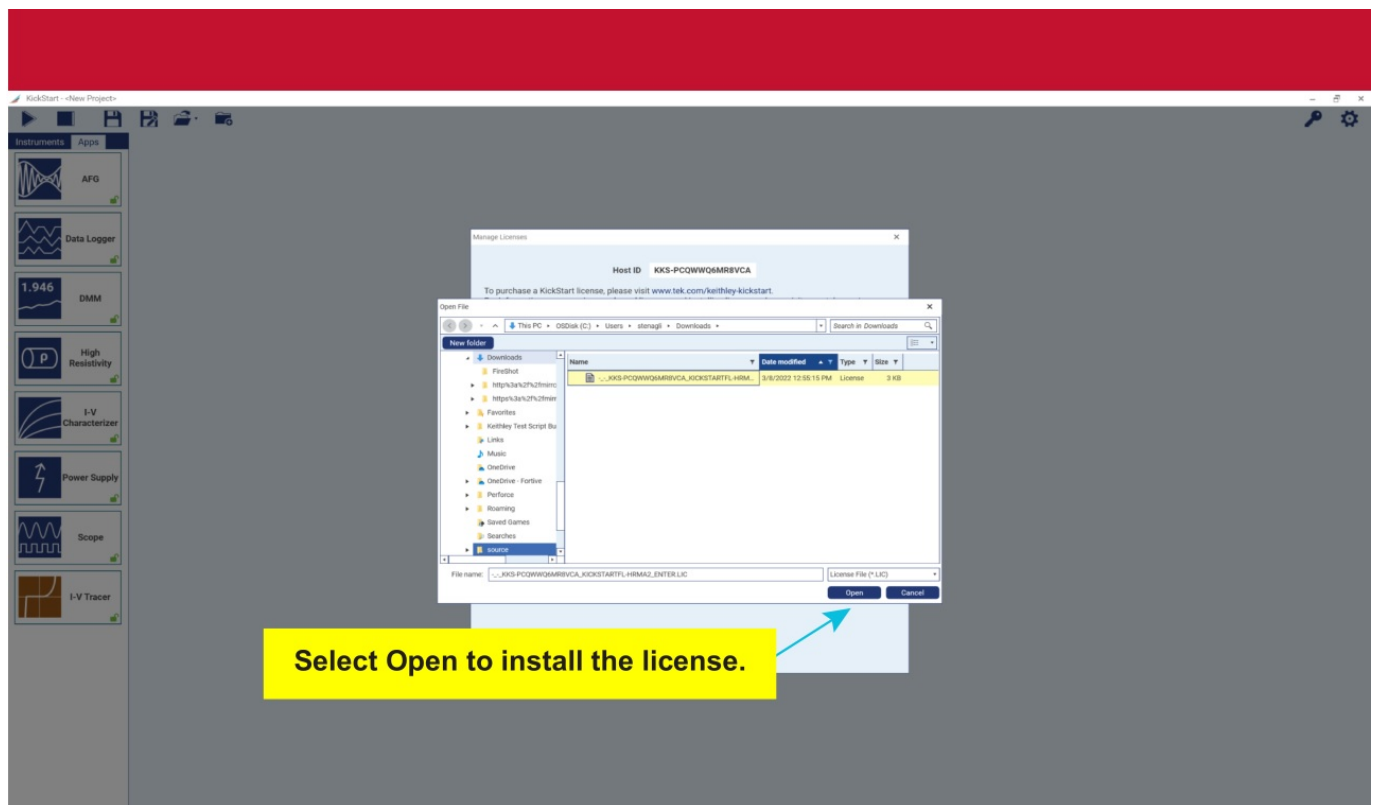
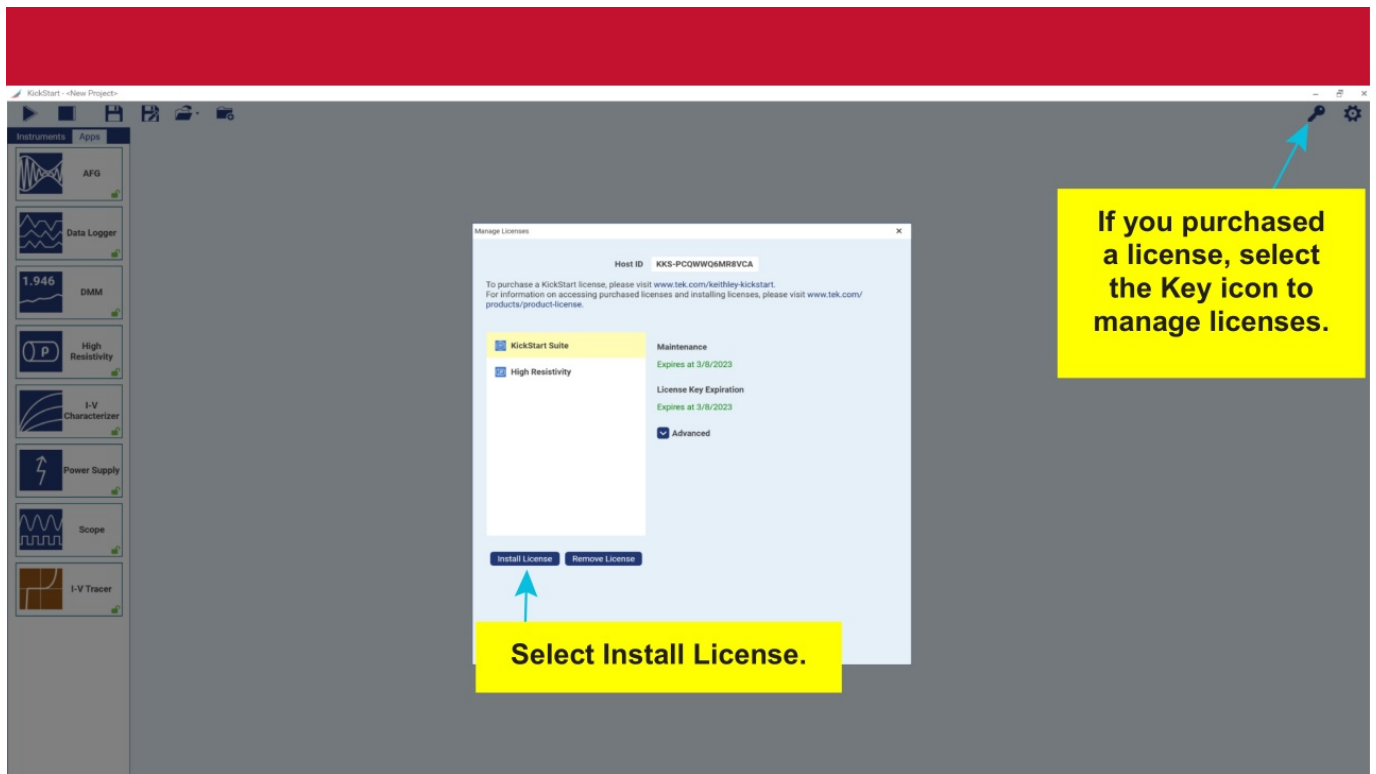
Remove License

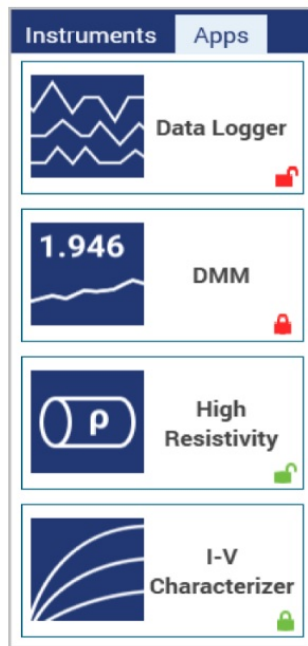
Maintenance:

Indicates the date your license will expire and when your license is eligible for updates. Once the current license expires, you will not be able to receive future updates.

Checkout:

Indicates the date the checkout will expire and when the license for your specific PC will expire. When you generate your license file in TekAMS, you can set the checkout time. Once checkout expires, you will need to check out another license file in TekAMS. If you need to move the license to a different PC, select **Remove License** to remove it from this PC. Next, check the license into TekAMS, then generate a new license file in TekAMS for the new PC.





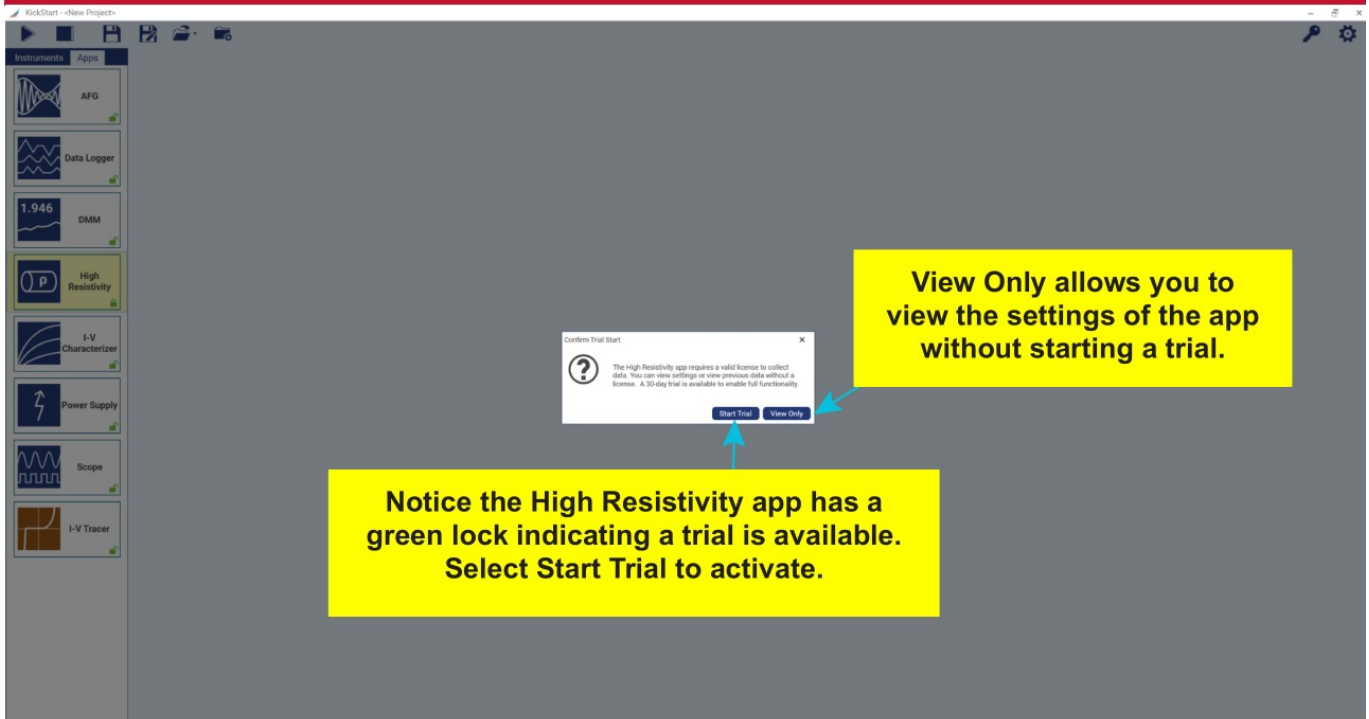
When you first open KickStart, the Instruments tab displays available instruments on the left. Select the Apps tab and you will see a lock on each App. The text below describes the licenses and lock icons:

Red unlocked indicates a license or trial that will expire soon. The lock turns red when the license or trial is within 45 days of expiration.

Red lock indicates the license has expired. Also, no trial is available.

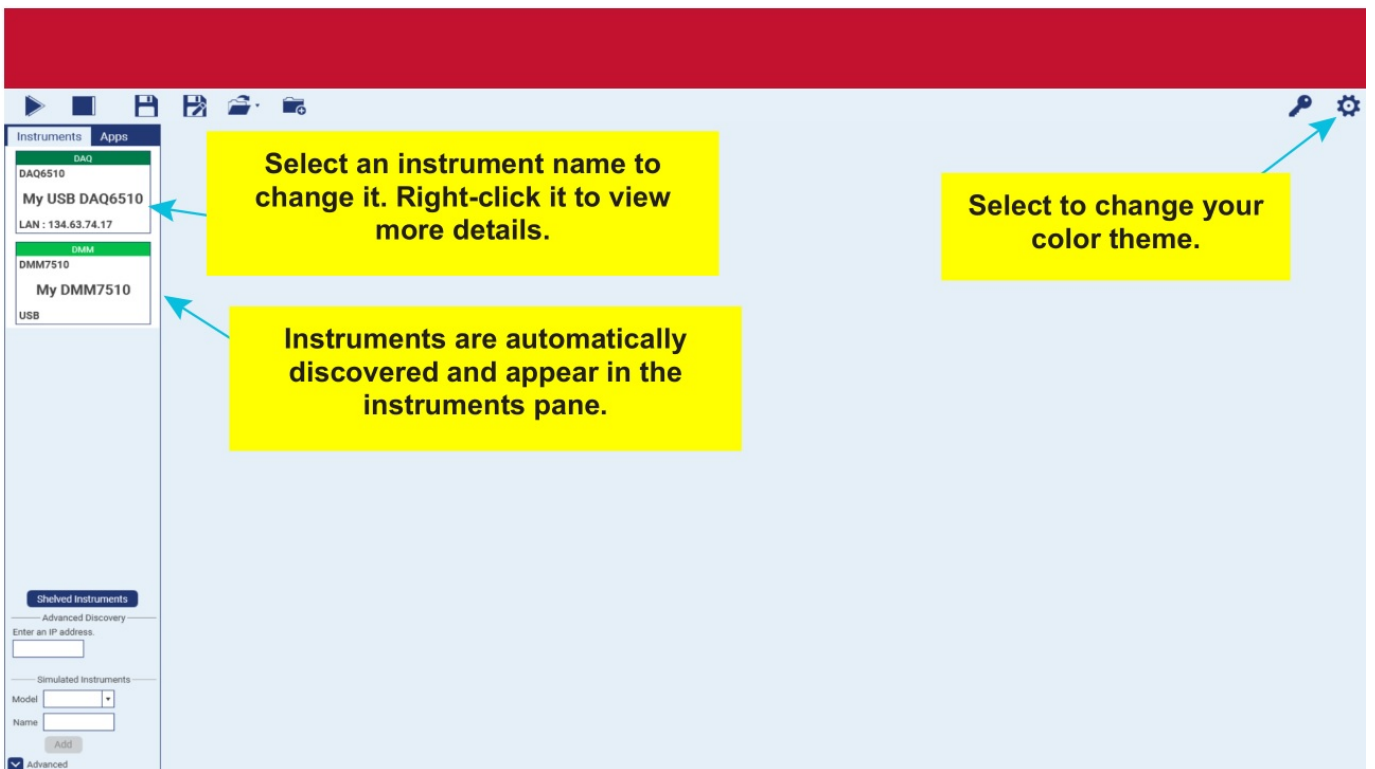
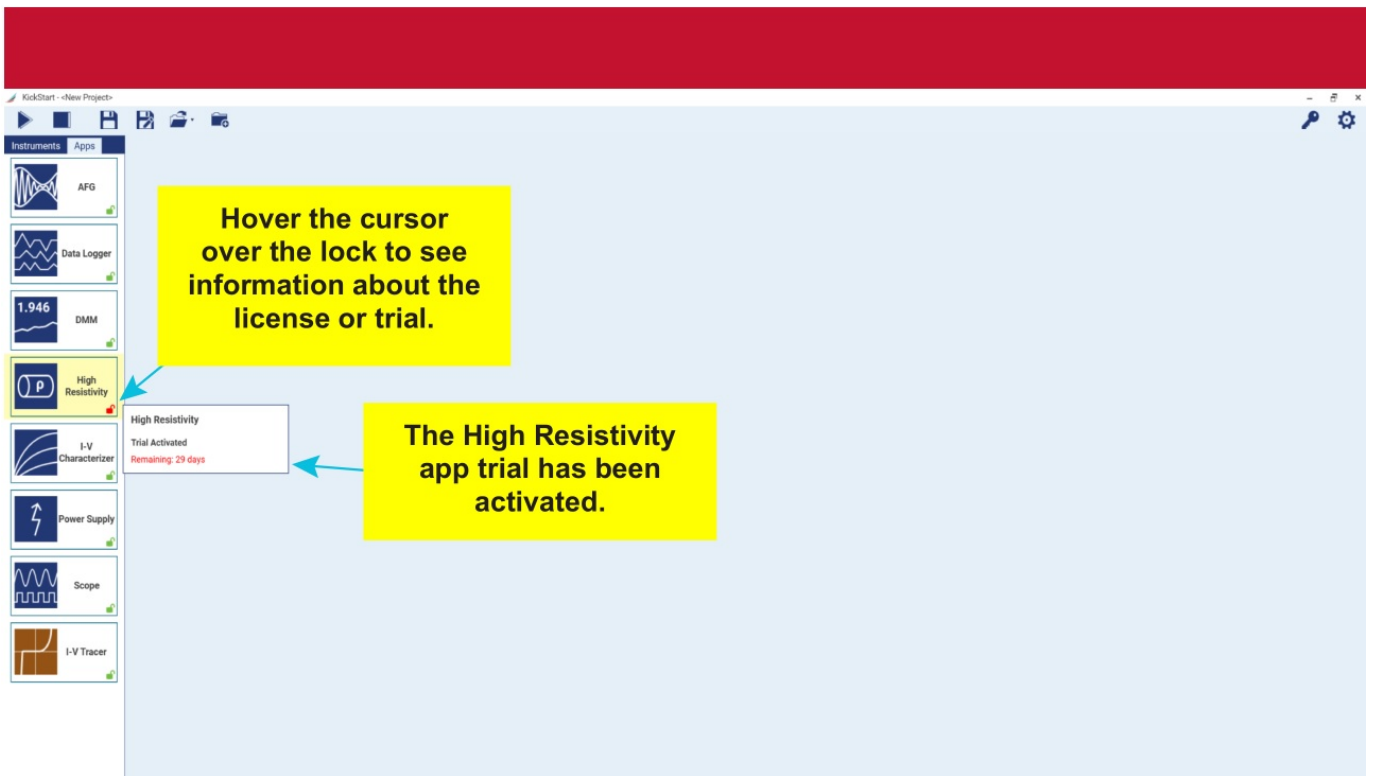
Green unlocked indicates a license or trial in use. The trial is for a limited time.

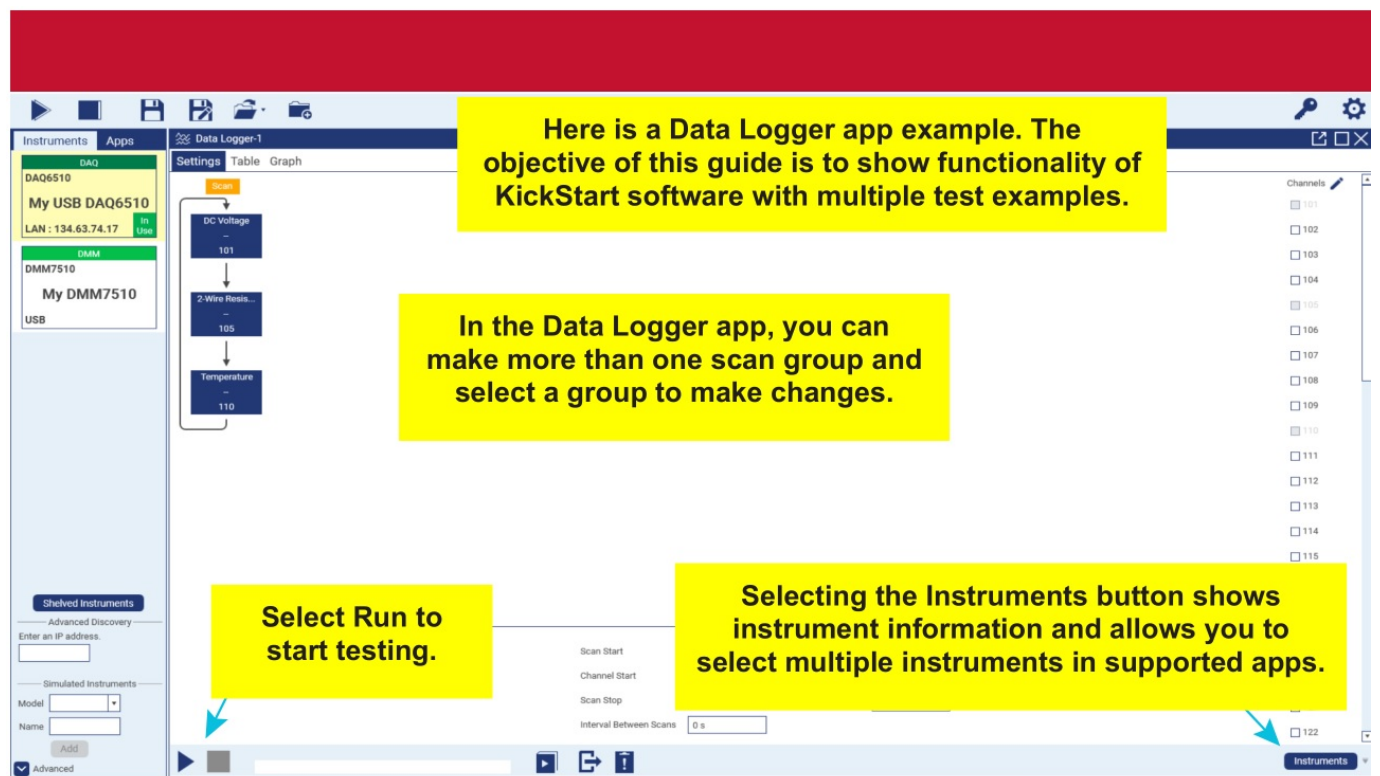
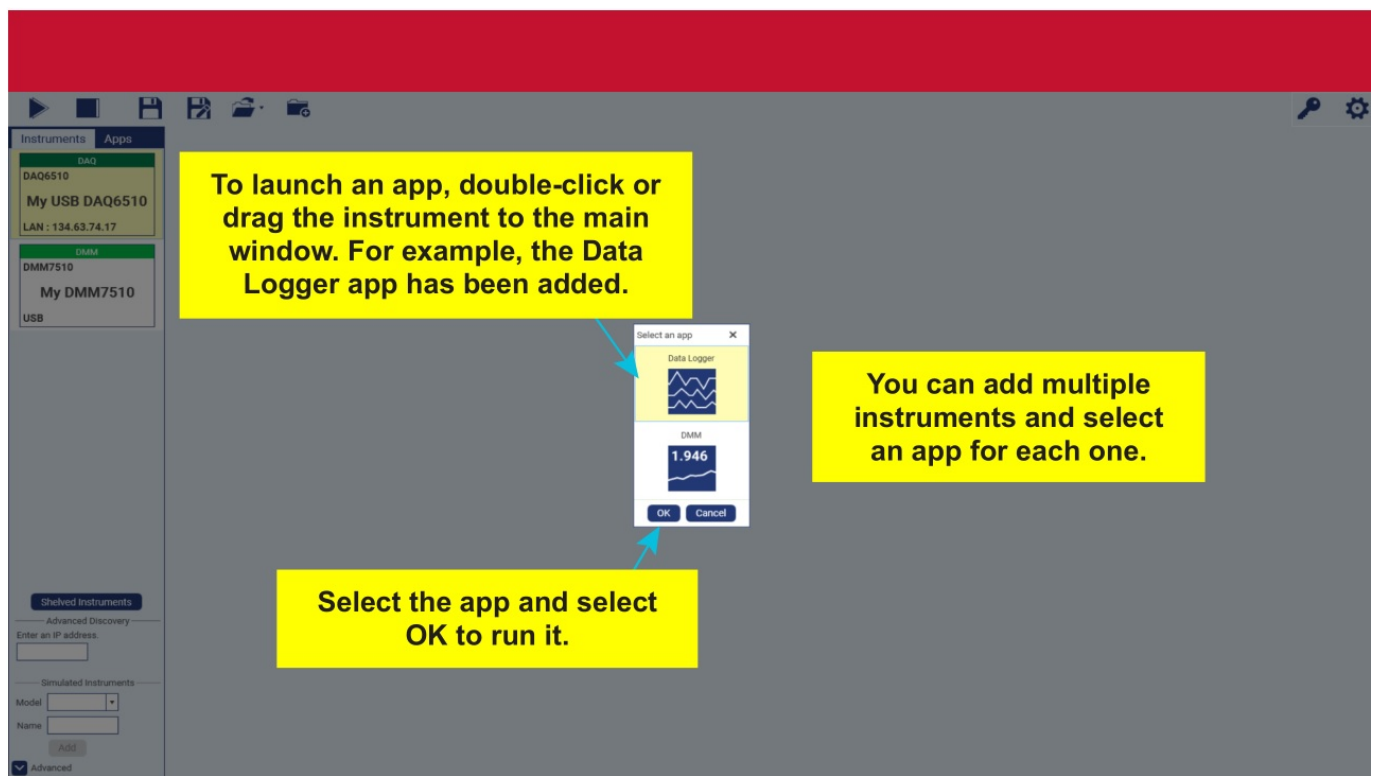
Green locked indicates a trial is available. The trial has not been activated.

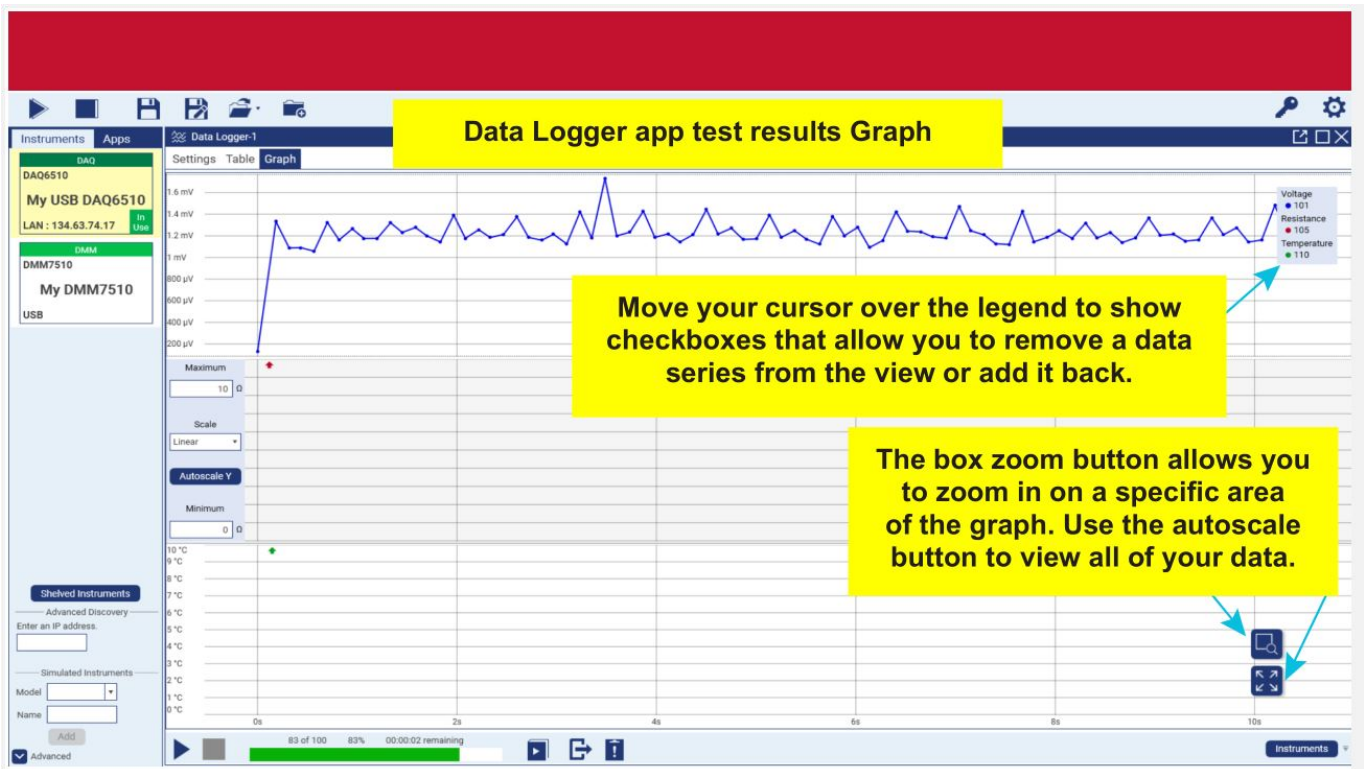
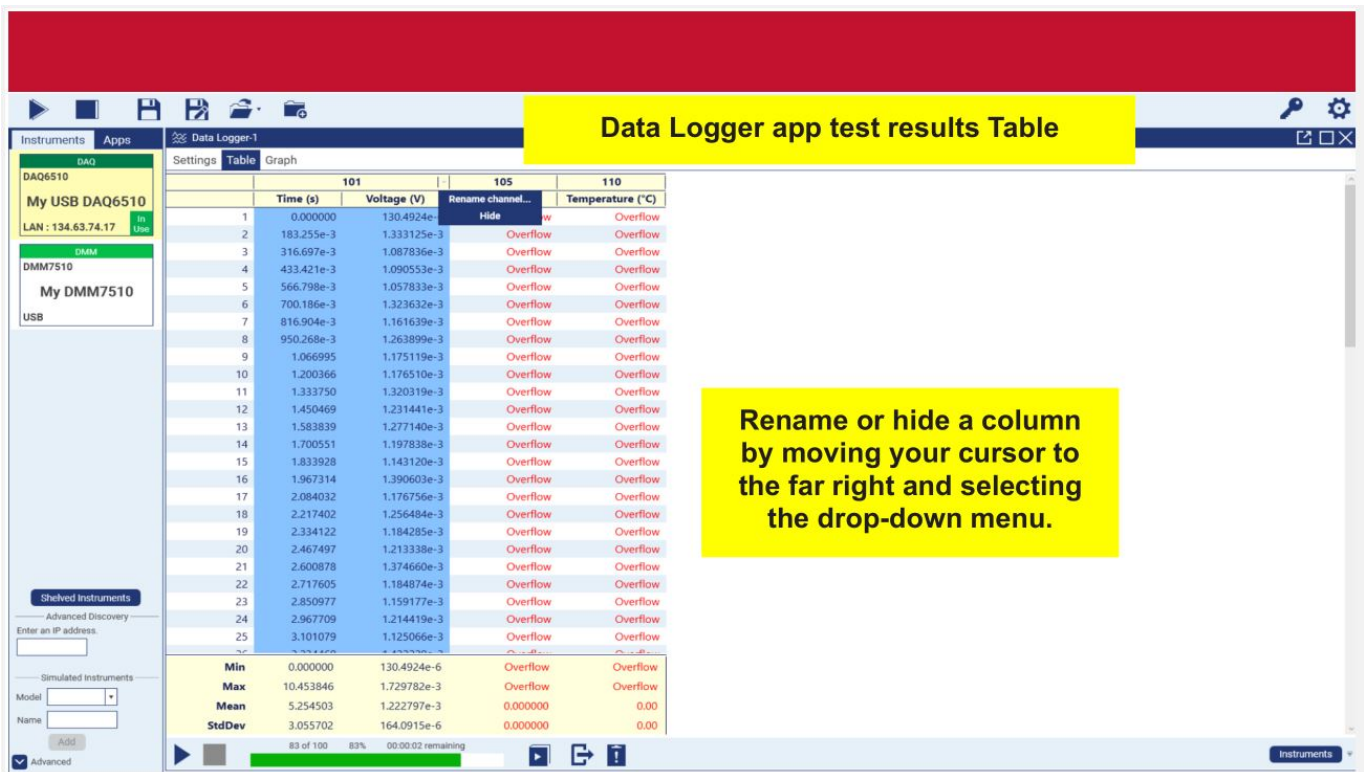


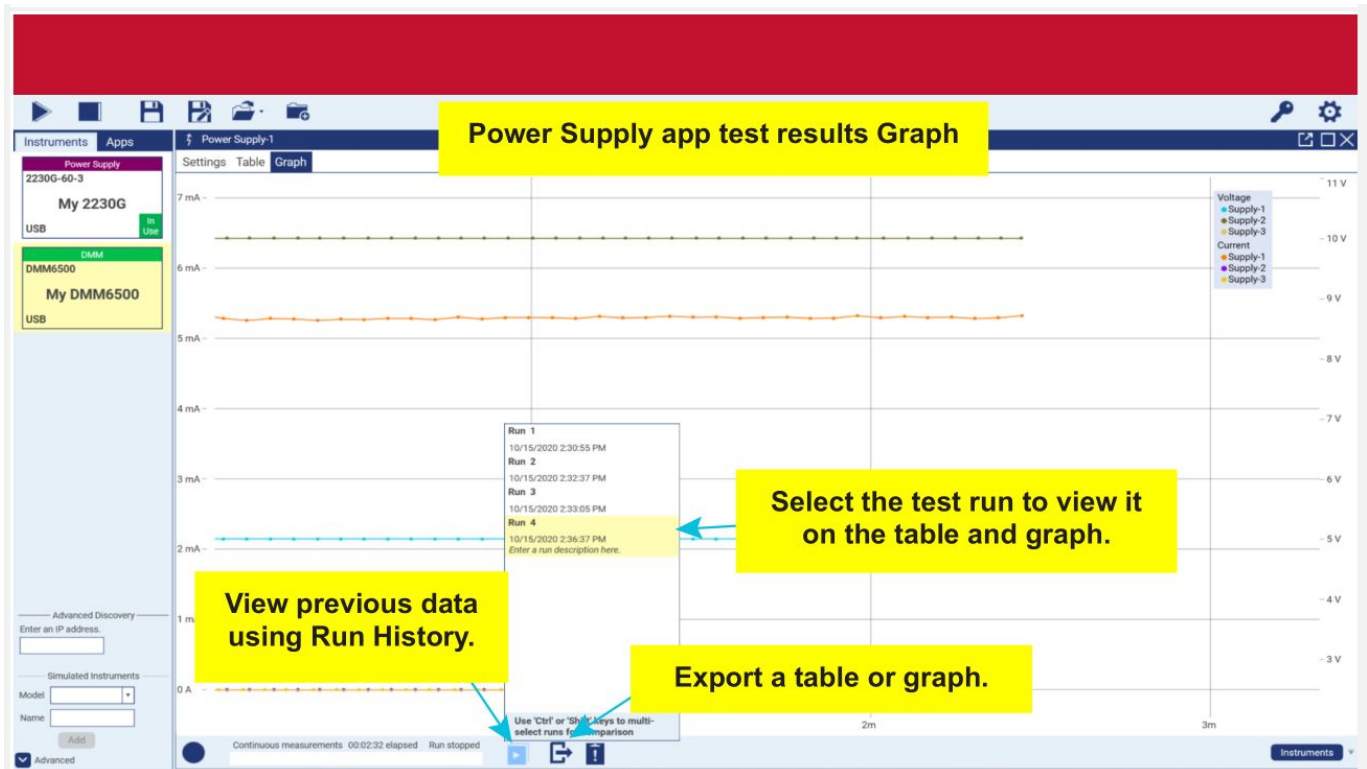
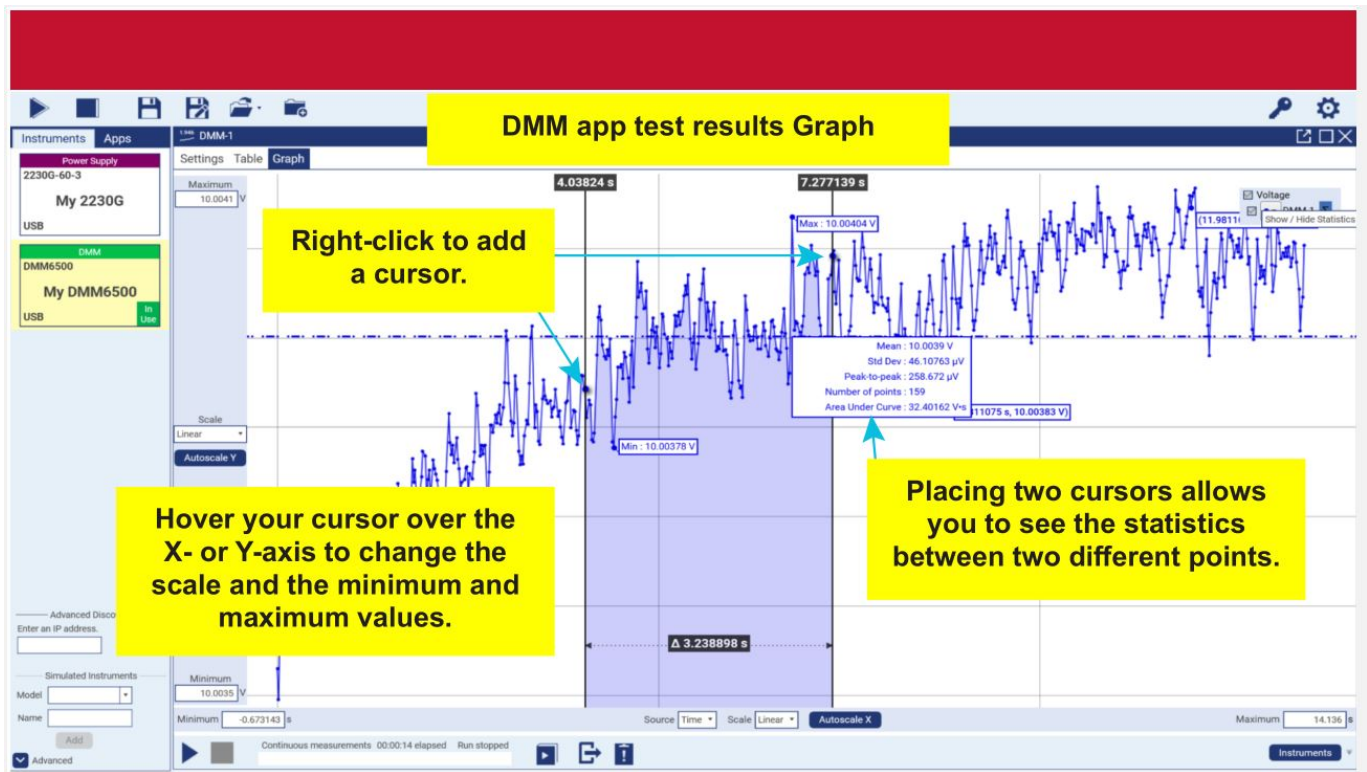
View Only allows you to view the settings of the app without starting a trial.

Notice the High Resistivity app has a green lock indicating a trial is available. Select Start Trial to activate.

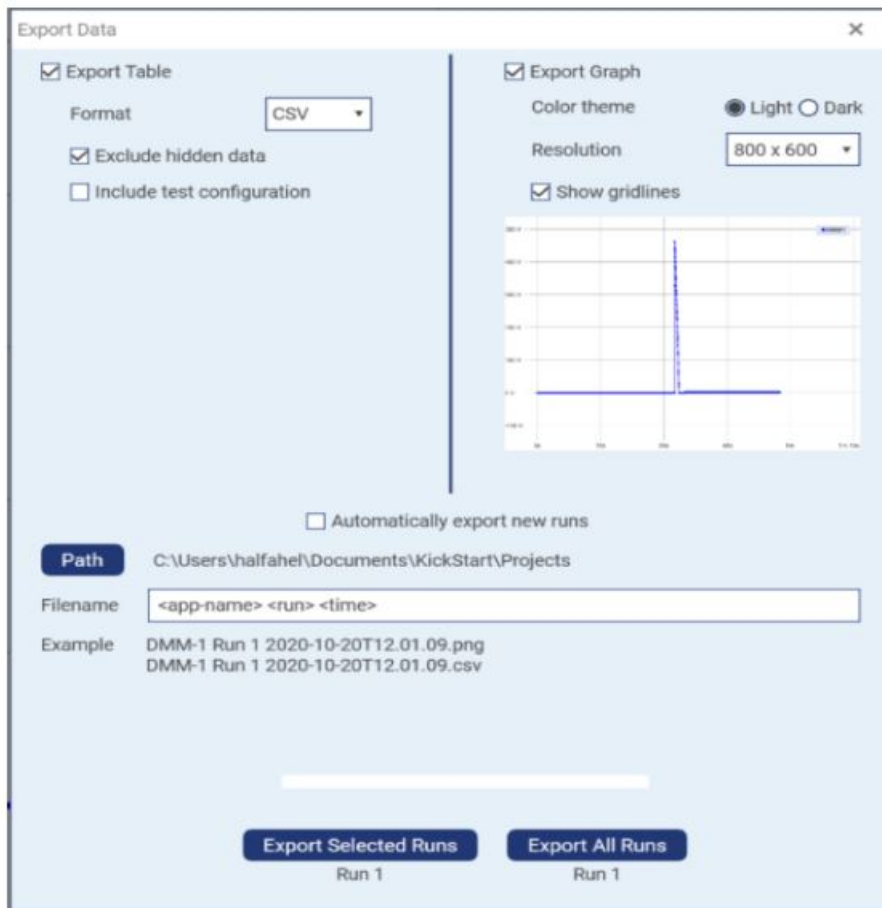








Export selected data



When you select the export icon, the Export Data window opens.
Here you can choose to export a table, graph, or both.

You can set your runs to export automatically. Make sure you choose the path for the saved files and create a file name.

You can export all of the runs or selected runs.

Scope app test Settings

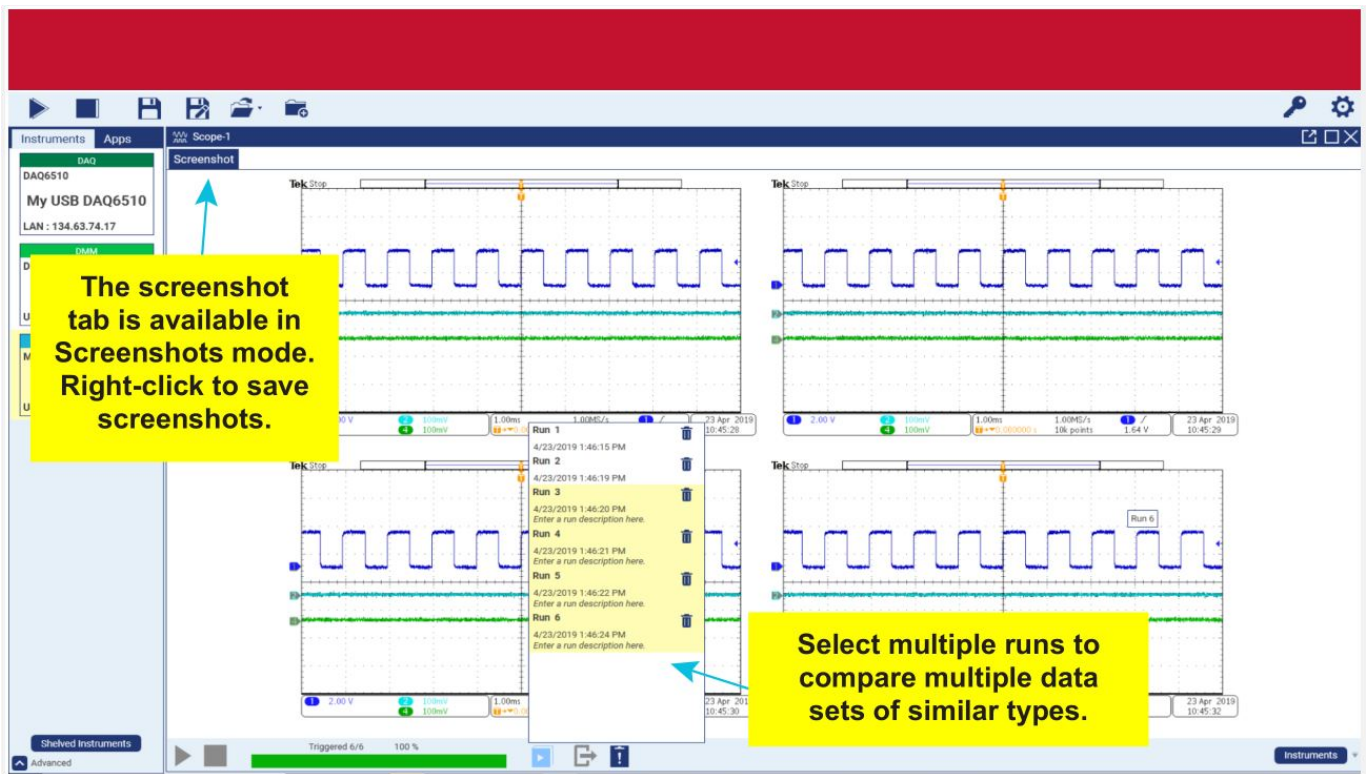
In the Scope app, select the Graph tab in Waveforms mode to confirm that the correct waveform was retrieved.

Select the mode that relates to your data.

Set when the capture occurs.

Channel information is shown here. Select Retrieve Data to see the data collected on this channel.

You are unable to retrieve data from disabled channels. Enable or disable channels from your instrument.



Next steps

For more information and to view documentation specific to your instrument, see the Keithley Instruments website, tek.com/keithley

Contact information: 1-800-833-9200

For additional contacts, see <https://www.tek.com/en/contact-tek>

Find more valuable resources at TEK.COM.

Copyright © 2022, Tektronix. All rights reserved.

Tektronix products are covered by U.S. and foreign patents, issued and pending. Information in this publication supersedes that in all previously published material. Specification and price change privileges reserved.

TEKTRONIX and TEK are registered trademarks of Tektronix, Inc. All other trade names referenced are the service marks, trademarks, or registered trademarks of their respective companies.



KKS-903-01 Rev. K April 2022



Documents / Resources



[KEITHLEY KickStart Software](#) [pdf] User Guide
KickStart Software, KickStart, Software

References

- [TK Test and Measurement Equipment | Tektronix](#)
- [TK Keithley KickStart Software | Tektronix](#)

[Manuals+.](#)