



# KEF Ci250RRM-THX High Output Three-Way In-Wall or In-Ceiling Round Speaker Instruction Manual

[Home](#) » [KEF](#) » KEF Ci250RRM-THX High Output Three-Way In-Wall or In-Ceiling Round Speaker Instruction Manual 



C E R T I F I E D

Ci Series installation Manual

Ci250RRM-THX

High Output Three-way In-wall or In-ceiling Round Speaker



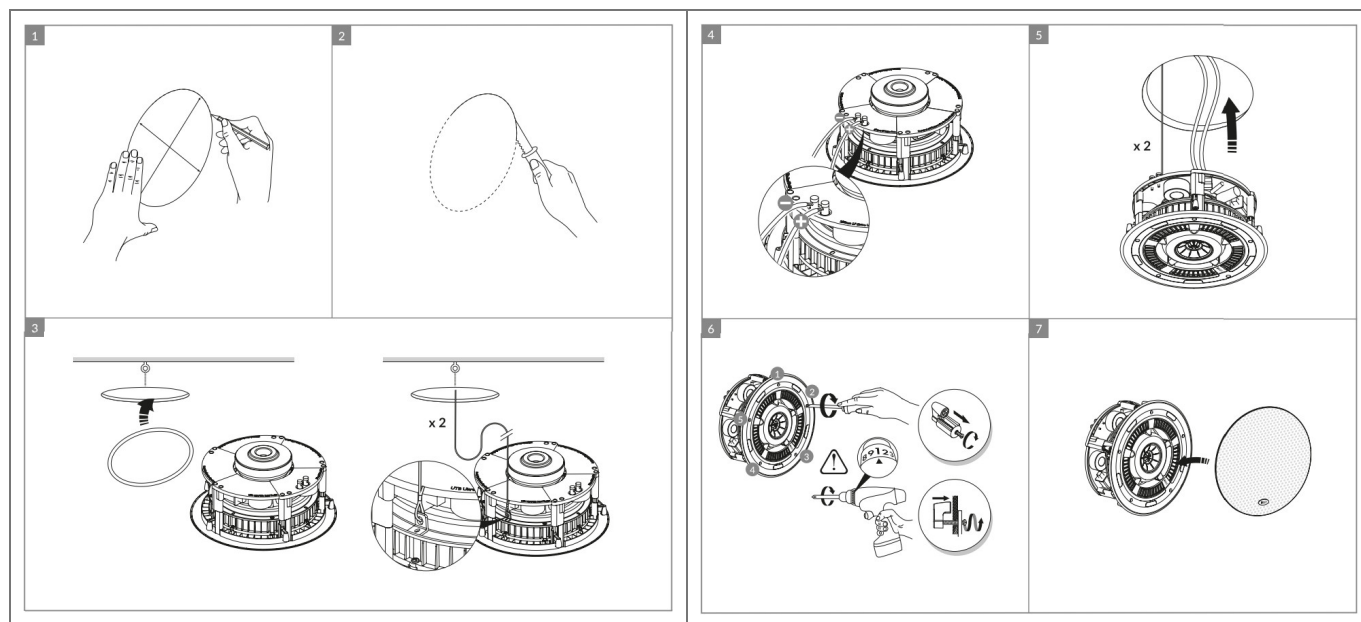
## Contents

- [1 Warning](#)
- [2 Installation](#)
- [3 Decoration](#)
- [4 Specifications](#)
- [5 Introduction](#)
- [6 Documents / Resources](#)

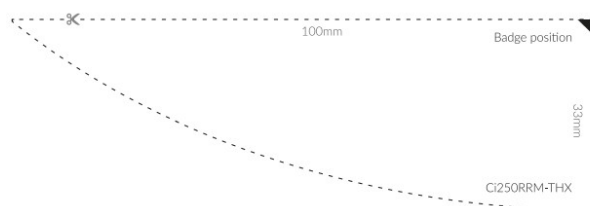
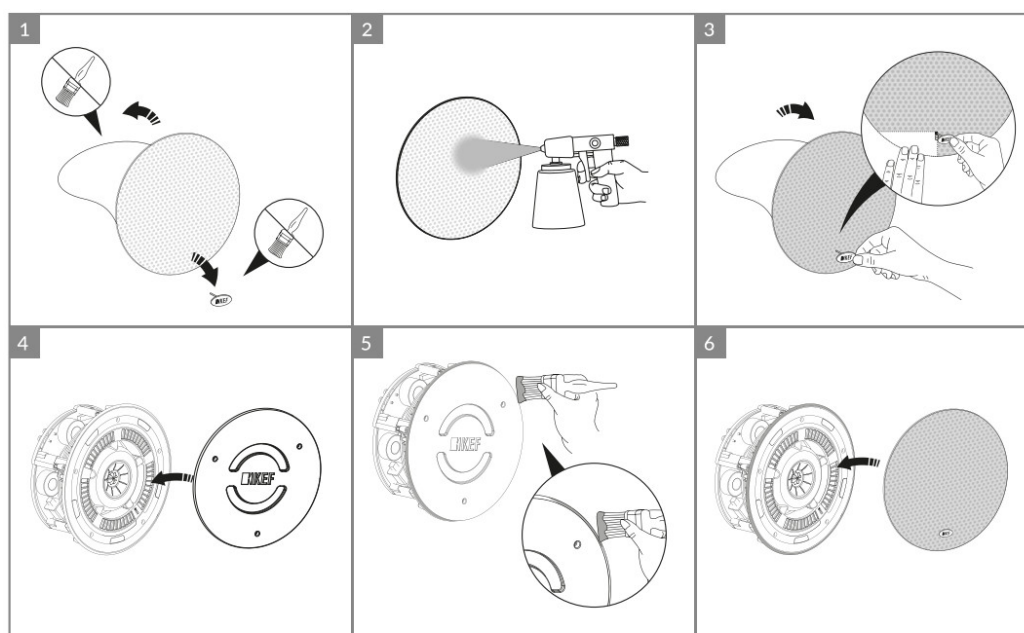
## Warning

Installation should be performed by an installer who is skilled in the proper use of hand and power tools, knowledge of local building and fire codes, and who is familiar with the environment behind the wall or ceiling where the speaker is being installed. No attempt should be made to install these loudspeakers unless you are sure you will not be cutting through electric cables, water or gas pipes, or supporting joists. Ensure the loading on the wall or ceiling will support the weight of these assemblies.

## Installation



## Decoration



## Specifications



Model		Ci25ORRM-THX
Series		R Series
Nominal impedance		8Ohm
Sensitivity (2.83V/1m)		89dB
Frequency response (±6dB) open-backed		30Hz-20kHz
Crossover frequency		540Hz-2.6kHz
Drive units	HF	19mm (0.75in.) vented aluminium dome with Metamaterial Absorption Technology
	MF	100mm (4in.) aluminium cone Uni-Q
LF	250mm (10in.)	
Recommended amplifier power		10-250W
Product external dimensions	Diameter	0346mm (13.62in.)
	Depth	175mm (6.89in.)
Cut-out dimensions Diameter		0300mm (11.81in.)
Net Weight		6kg (13.2lbs)
Mounting depth from surface		168mm (6.62in.)
Ideal Rear Volume (L)		200L
Minimum Rear Volume (L)		100L
Optional rough in frame		N/A
Optional rear enclosure		N/A
THX-Certified		*THX Certified Ultra


KEF reserves the right, in line with continuing research and development, to amend or change specifications. EQAOE.

\*THX and the THX Logo are the property of THX Ltd., registered in the U.S. and other countries.

## Introduction

Thank you for purchasing this KEF Ci series custom installation loudspeaker. These products have been designed for dry-lined, stud partition walls and ceilings and for suspended ceilings and will deliver many years of superb sound quality.

Documents / Resources

	<p><a href="#">KEF Ci250RRM-THX High Output Three-Way In-Wall or In-Ceiling Round Speaker</a> [pdf] Instructions Manual</p> <p>Ci250RRM-THX High Output Three-Way In-Wall or In-Ceiling Round Speaker, Ci250RRM-THX , High Output Three-Way In-Wall or In-Ceiling Round Speaker, Three-Way In-Wall or In-Ceiling Round Speaker, In-Ceiling Round Speaker, Round Speaker, Speaker</p>
---	--

[Manuals+](#)