



# KEF Ci250RRM-THX High Output Three-Way In-Ceiling Round Speaker Instruction Manual

[Home](#) » [KEF](#) » KEF Ci250RRM-THX High Output Three-Way In-Ceiling Round Speaker Instruction Manual 

## Contents

- [1 KEF Ci250RRM-THX High Output Three-Way In-Ceiling Round Speaker](#)
- [2 Introduction](#)
- [3 Installation](#)
- [4 Decoration](#)
- [5 Specifications](#)
- [6 Documents / Resources](#)
  - [6.1 References](#)
- [7 Related Posts](#)



**KEF Ci250RRM-THX High Output Three-Way In-Ceiling Round Speaker**



## **Introduction**

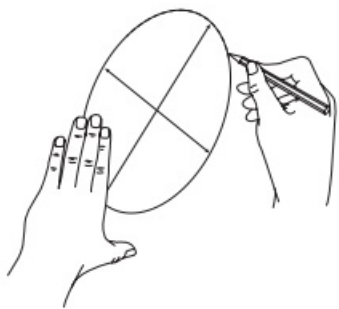
Thank you for purchasing this KEF Ci series custom installation loudspeaker. These products have been designed for dry-lined, stud partition walls and ceilings and for suspended ceilings and will deliver many years of superb sound quality.

## **Warning**

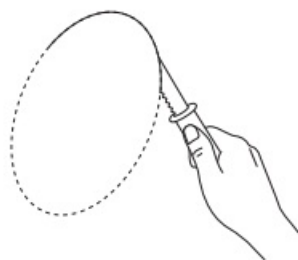
Installation should be performed by an installer who is skilled in the proper use of hand and power tools, has knowledge of local building and fire codes, and who is familiar with the environment behind the wall or ceiling where the speaker is being installed. No attempt should be made to install these loudspeakers unless you are sure you will not be cutting through electric cables, water or gas pipes, or supporting joists. Ensure the loading on the wall or ceiling will support the weight of these assemblies.

## **Installation**

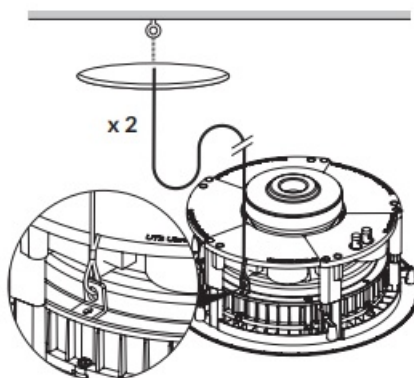
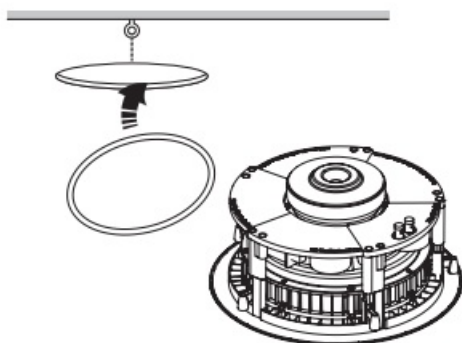
1

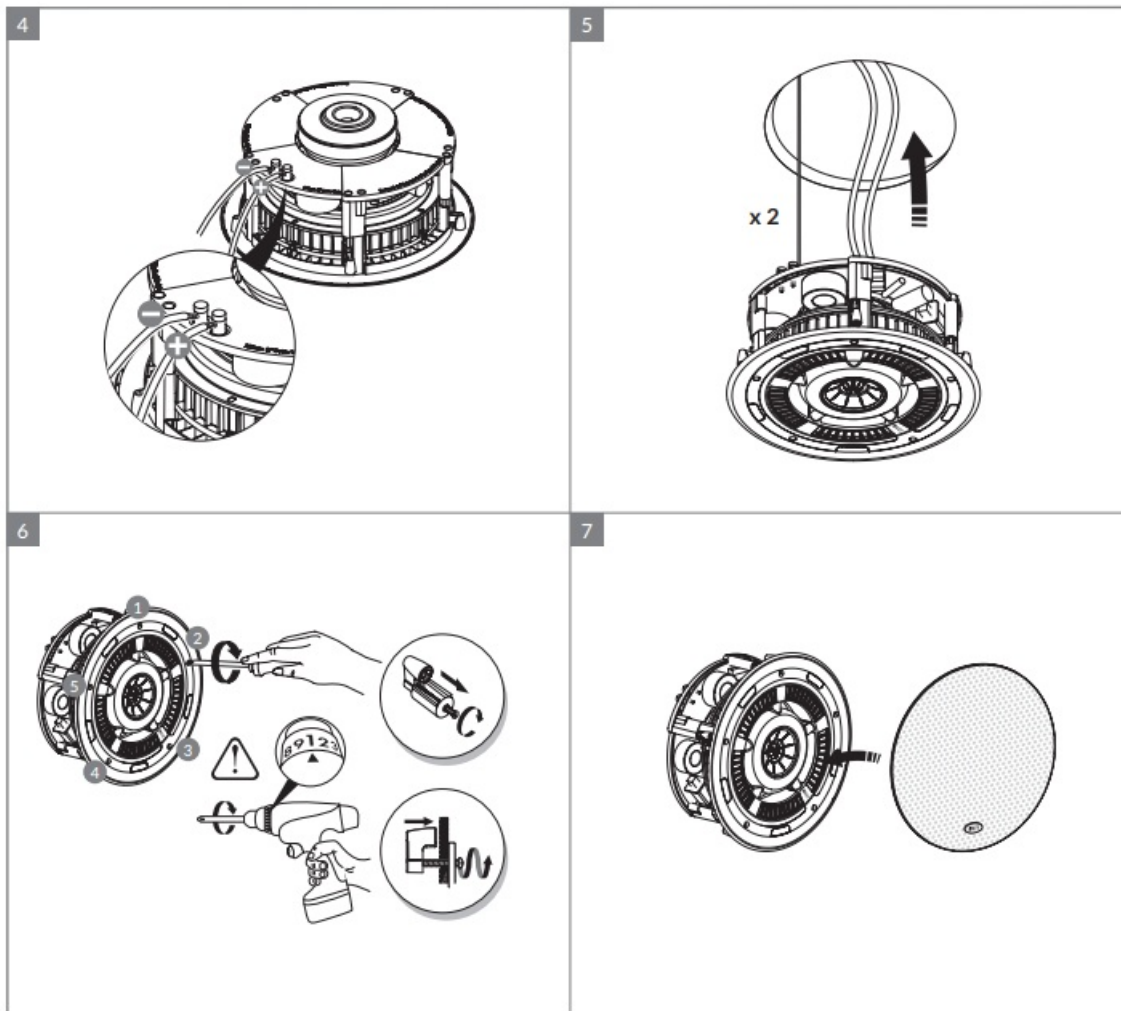


2

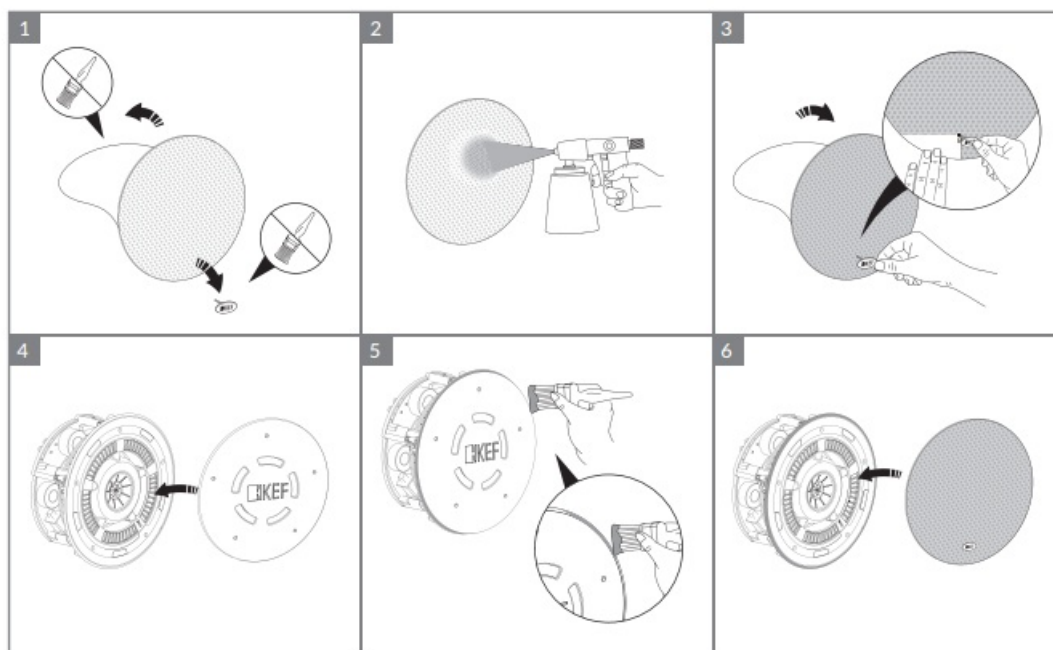


3





## Decoration




## Specifications

Model	<b>Ci250RRM-THX</b>	
Series	Ci-R Series	
Nominal impedance	8Ohm	
Sensitivity (2.83V/1m)	89dB	
Frequency response (±6dB) open-backed	28Hz-20kHz	
Crossover frequency	530Hz, 2.6kHz	
Drive units	HF	19mm (0.75in.) vented aluminium dome with Metamaterial Absorption Technology
	MF	100mm (4in.) aluminium cone Uni-Q
	LF	250mm (10in.)
Recommended amplifier power	50-250W	
Product external dimensions	Diameter	Ø346mm (13.62in.)
Depth	175mm (6.89in.)	
Cut-out dimensions	Diameter	Ø300mm (11.81in.)
Net Weight	6kg (13.2lbs)	
Mounting depth from surface	168mm (6.62in.)	
Ideal Rear Volume (L)	150L	
Minimum Rear Volume (L)	80L	
Optional rough in frame	N/A	
Optional rear enclosure	N/A	
THX-Certified	*THX Certified Ultra	

KEF reserves the right, in line with continuing research and development, to amend or change specifications. E&OE. THX and the THX Logo are the property of THX Ltd., registered in the U.S. and other countries.

GP Acoustics (UK) Limited  
Eccleston Road  
Tovil, Maidstone  
Kent, ME15 6QP  
UK

## Documents / Resources

	<p><a href="#">KEF Ci250RRM-THX High Output Three-Way In-Ceiling Round Speaker</a> [pdf] Instruction Manual</p> <p>Ci250RRM-THX High Output Three-Way In-Ceiling Round Speaker, Ci250RRM-THX, High Output Three-Way In-Ceiling Round Speaker, Three-Way In-Ceiling Round Speaker, In-Ceiling Round Speaker, Round Speaker, Speaker</p>
---	--

## References

