

KE2 Service Tool App Apple iOS Dongle



KE2 Service Tool App Apple iOS Dongle Instruction Manual

[Home](#) » [KE2](#) » KE2 Service Tool App Apple iOS Dongle Instruction Manual 

Contents

- [1 KE2 Service Tool App Apple iOS Dongle](#)
- [2 Product Specifications](#)
- [3 Product Usage Instructions](#)
- [4 STEP 1](#)
- [5 Documents / Resources](#)
 - [5.1 References](#)
- [6 Related Posts](#)



KE2 Service Tool App Apple iOS Dongle



Product Specifications

- **Product Name:** KE2 Service Tool App
- **Compatibility:** Apple iOS devices
- **Function:** Allows access to KE2 Therm controllers via Ethernet connection
- **Manufacturer:** KE2 Therm

Product Usage Instructions

1. Step 1: Obtain Controller IP Address

Use the controller display to find and note the IP address by navigating to the Variables menu. Record the full IP address by noting the numbers displayed for each octet.

2. Step 2: Connect Dongle and Ethernet Cable

Plug the dongle into your Apple iOS device and connect it to the controller using an Ethernet cable.

3. Step 3: Configure iOS Device Settings

Access the settings of your iOS device, navigate to Ethernet settings, and configure the IP address by inputting the controller's IP address with only the last octet changed.

4. Step 4: Open KE2 Therm Service Tool App

- Launch the KE2 Therm Service Tool app on your iOS device. The controller should automatically appear within a few moments. Tap on the controller tile to access its service webpage.
- Your iOS device will save Ethernet settings for future use. If connecting to new controllers, make necessary changes to Ethernet settings based on controller IP address. If the controller does not appear in the app, repeat steps 1-4.
- KE2 Therm Solution 12 Chamber Drive, Washington, MO 63090
- **Phone:** 1.888.337.3358
- **Website:** www.ke2therm.com

Frequently Asked Questions (FAQ):

1. Q: Can I use any dongle with the KE2 Service Tool App?

A: It is recommended to use only KE2 Therm tested dongles for optimal results. Untested dongles may not work correctly.

The following steps will allow you to access your controller with the KE2 Service Tool App when plugging directly into an Ethernet based KE2 Therm controller with your Apple iOS phone or tablet.



Use only KE2 Therm tested dongles, results will vary with untested dongles. Actual dongle may vary from the dongle pictured above.



DOWNLOAD KE2 SERVICE TOOL APP



STEP 1



If display looks like this.

Use **▼** to navigate to **P1**, press **ENTER**. Make note of number displayed.

Press **BACK**, repeat for **P2**, **P3**, and **P4** to record full the IP address.



If display looks like this.

Use **◀** or **▶** to navigate to **VARIABLES MENU**.

Use **▼** to navigate to **P0CTET 1**, press **ENTER**. Make note of number displayed.

Press **BACK**, repeat for **P0CTET 2**, **P0CTET 3**, and **P0CTET 4** to record the full IP address.



If display looks like this.

Use **◀** or **▶** to navigate to **BOARD VARIABLES**.

Press **ENTER** to display **MAIN BOARD**, press **ENTER** again.

Press **▼** to navigate to **P0CTET 1**, press **ENTER**. Make note of number displayed.

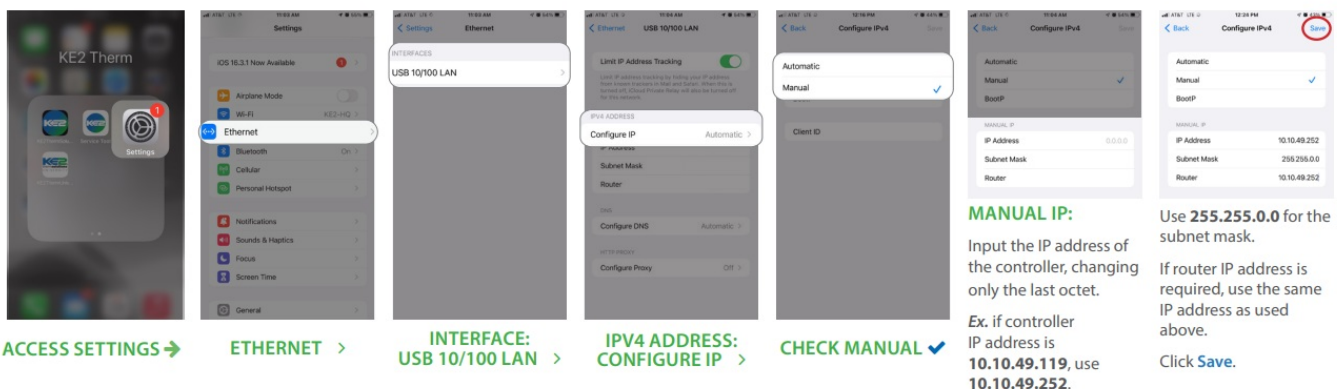
Press **BACK**, repeat for **P0CTET 2**, **P0CTET 3**, and **P0CTET 4** to record the full IP address.

• STEP 2

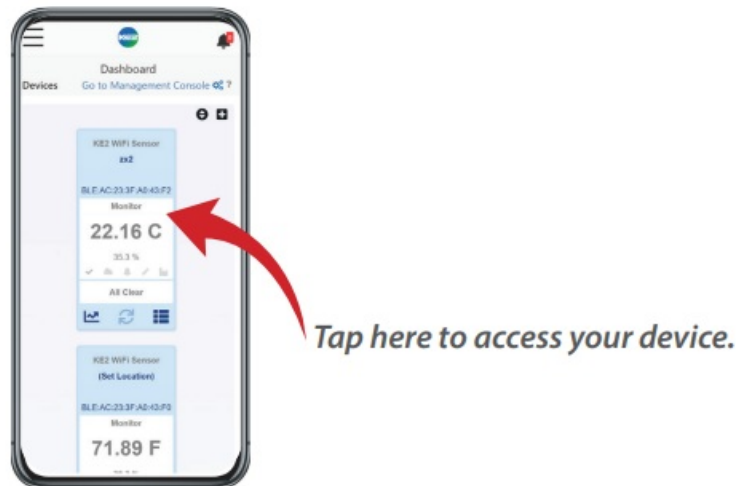
- Plug dongle into your phone or tablet, then plug an Ethernet cable into the dongle and controller.

• STEP 3

- Navigate to the settings for your iOS device and configure the IP address:



STEP 4



Tap here to access your device.

- Open the KE2 Therm Service Tool app. Your controller will appear automatically within a few moments. Tap on the controller tile to access the service webpage of the controller.
- Congratulations! Your iOS device should remember the Ethernet settings, so the next time you plug into the controller with your phone or tablet, just open the app.
- If connecting to new controllers, it may be necessary to change the Ethernet settings depending on the controller IP address. If controller does not appear on the app, repeat steps 1-4.
- Tap here to access your device.
- © Copyright 2023 KE2 Therm Solutions, Inc., Washington, Missouri 63090 Q.5.78 May 2023 supersedes all prior publications.
- KE2 Therm Solutions
- 12 Chamber Drive . Washington, MO 63090 1.888.337.3358
- www.ke2therm.com

Documents / Resources



[KE2 KE2 Service Tool App Apple iOS Dongle \[pdf\] Instruction Manual](#)
KE2 Service Tool App Apple iOS Dongle, KE2, Service Tool App Apple iOS Dongle, Tool App Apple iOS Dongle, App Apple iOS Dongle

References

-  [KE2Therm](#)
- [User Manual](#)

[Manuals+](#), [Privacy Policy](#)

This website is an independent publication and is neither affiliated with nor endorsed by any of the trademark owners. The "Bluetooth®" word mark and logos are registered trademarks owned by Bluetooth SIG, Inc. The "Wi-Fi®" word mark and logos are registered trademarks owned by the Wi-Fi Alliance. Any use of these marks on this website does not imply any affiliation with or endorsement.