

KASON
0488C Walk
In Push Bar
Inside
Release



KASON 0488C Walk In Push Bar Inside Release Instruction Manual

[Home](#) » [KASON](#) » KASON 0488C Walk In Push Bar Inside Release Instruction Manual 

Contents

- [1 KASON 0488C Walk In Push Bar Inside Release](#)
- [2 Product Usage Instructions](#)
- [3 Models](#)
- [4 INSTALLATION INSTRUCTIONS](#)
- [5 TESTING PROCEDURE](#)
- [6 Documents / Resources](#)
 - [6.1 References](#)



KASON 0488C Walk In Push Bar Inside Release



Specifications:

- **Product Name:** 0488C Walk-In Push Bar Inside Release
- **Part Number:** 10488C00318*
- Compatible with various latches and inside release handles
- **Material:** Stainless steel
- **Hardware:** 1/4-20 structural hardware (not included)

Product Usage Instructions

Installation:

1. Place the door on a work table and set Bracket 1 in position to align the ISR rod hole with the hole on the outside latch. Square the bracket on the door, mark and center punch 6 holes.
2. Find centers of holes with a t-square and mark horizontal centerlines for Bracket 2.
3. Align Bracket 2 on the door, mark centers of slots, and center punch 4 holes. Drill a 3/4" diameter hole through the door.
4. Install Brackets 1 and 2 using 1/4-20 structural hardware.
5. Install pivot arm assembly and push rod on Brackets 1 and 2.
6. Secure pivot arm assembly with provided hardware, and test function, and follow the instruction sheet to complete installation.

Testing Procedure:

1. Open the door.
2. With the door open, push to depress the inside release knob (or push bar).
3. If the latch tongue retracts substantially into the latch, the latch and inside release are functioning properly.
4. If the latch tongue does not retract substantially, do not enter the walk-in and contact management for servicing.
5. Lock the door using a key cylinder and/or padlock, and repeat steps 2 and 3. After passing the test with the latch lock, unlock and continue normal use.

Frequently Asked Questions (FAQ):

- **Q: What should I do if the latch tongue does not retract substantially into the latch during testing?**
A: If this occurs, do not enter the walk-in and notify management to have the door serviced immediately for safety reasons.
- **Q: Are the installation hardware included with the product?**
A: No, the product does not include installation hardware. You will need to use self-threading structural 1/4-20 screws or bolts for installation.

Models

Inside Release Handles/Latches

- 0480, 0481B, 0482B, 0486B, 0487B, 0489B

- 0045, 0046, 0050, 0051, 4545, 4646, 5050, 5151
- 0481B, 0482B, 0486B, 0487B, 0489B
 - 0052, 0053
- 0486D, 0489D
 - 0055XXL
- 0480, 0483, 0481A, 0481SA, 0482A, 0486A, 0487A, 0488A, 0489A
 - 0056, 5656
- 0481C, 0481SC, 0482C, 0486C, 0487C, 0488C, 0489C
 - 0058, 0058E, 0077, 0078, 0778
- 0488AG
 - 5688
- 0488CG
 - 7888

U.S. Patent No. 11,193,311 For use with Kason 0058, 0077, 0078, and 0778 latches

WARNING

ENTRAPMENT AND FREEZE HAZARD

- For safe operation, use a latch paired with the appropriate inside release shown in the table above. See latch instructions for more details.
- Failure to follow the installation and testing procedures may result in personnel being entrapped and subject to extreme cold, freezing temperatures, and possibly death. See page 4 for testing procedures.

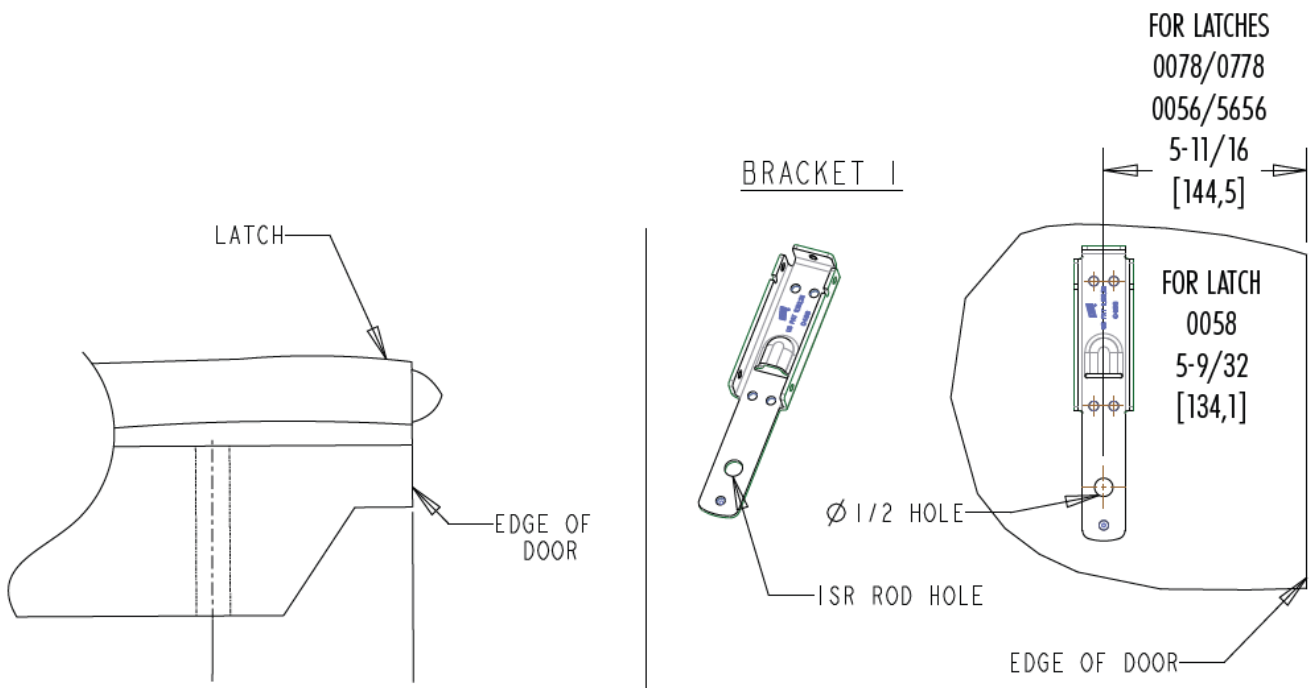
CAUTION

Before installation begins: This Push Bar ISR is only intended to be used on doors that have sufficient structural support, either a steel backing plate or other method appropriate for properly securing 1/4" stainless steel bolts/screws (not included).

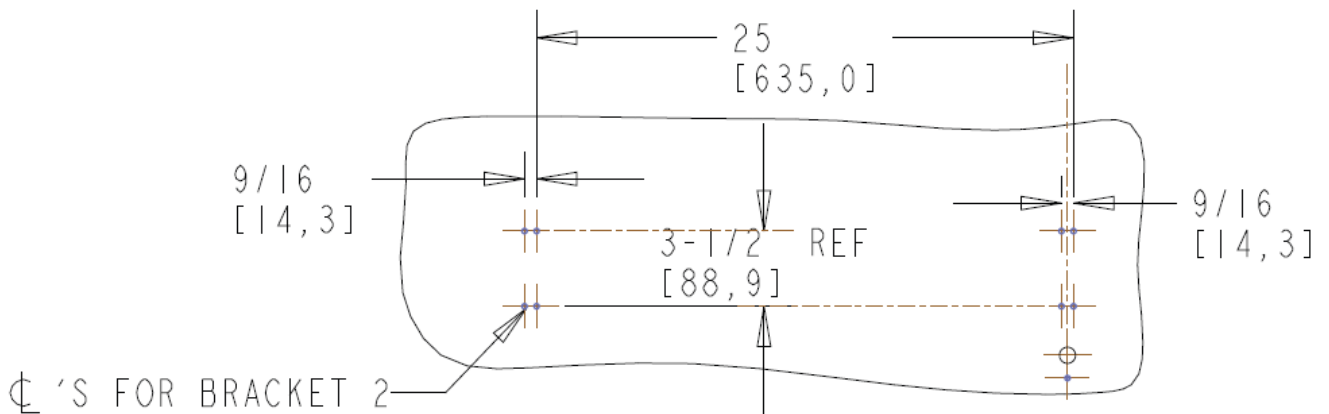
INSTALLATION INSTRUCTIONS

DIRECTIONS

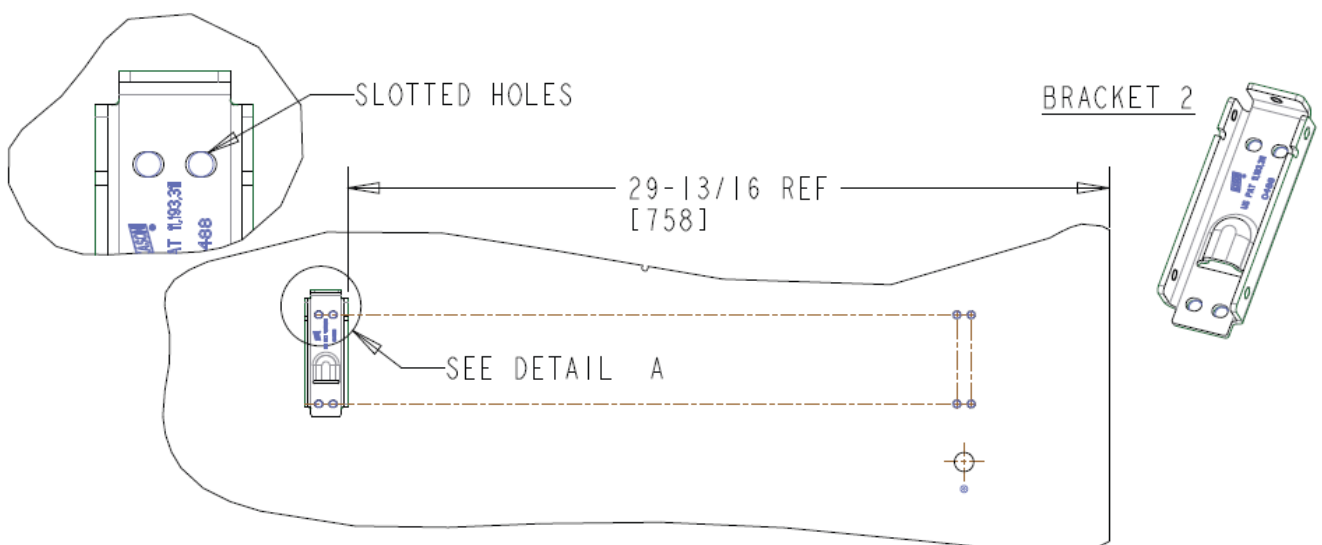
1. With the door placed on the work table, set Bracket 1 in position to align the ISR rod hole with the same hole on the outside latch (REF IS-0788). Align the bracket so that it is square on the door. Mark and center punch (6) holes.



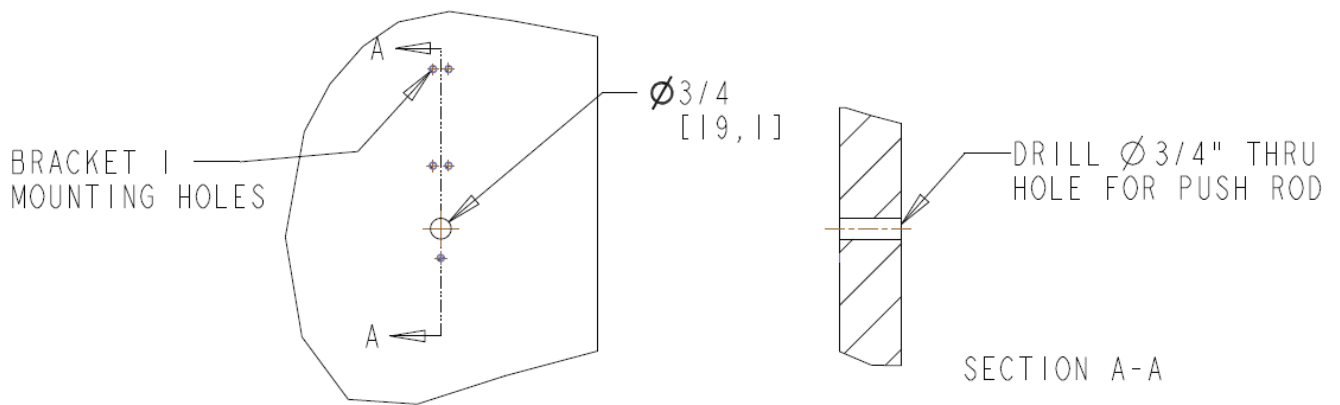
2. Using a t-square, find the centers of the holes shown and mark horizontal centerlines for Bracket 2.



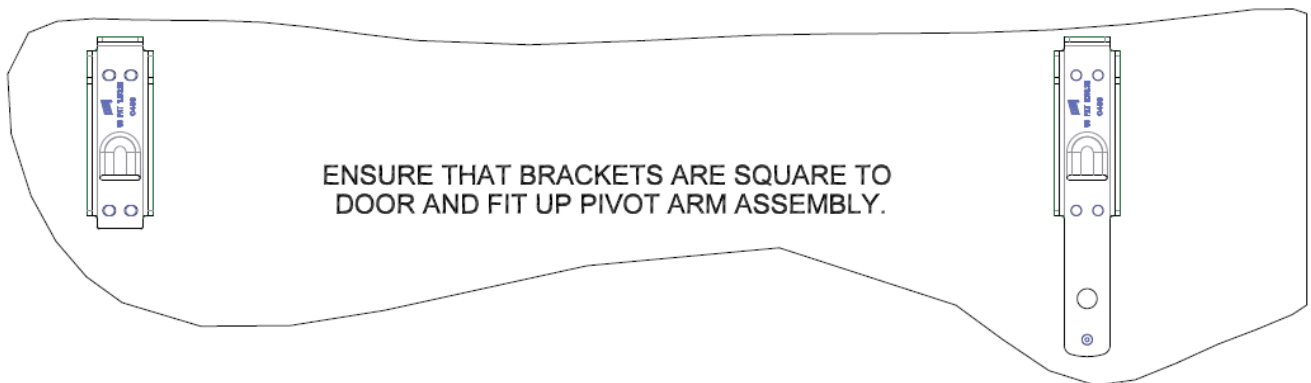
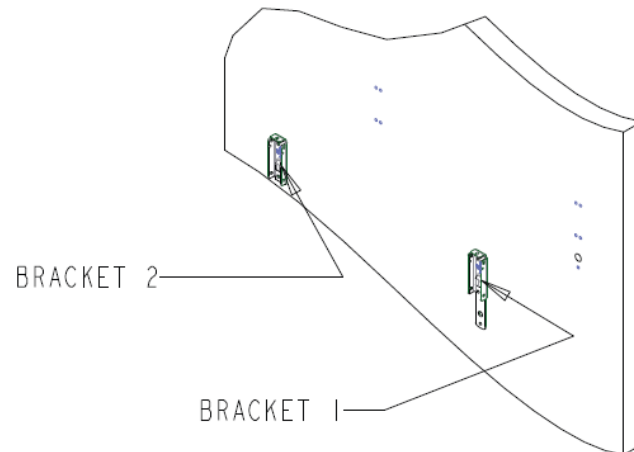
3. Place Bracket 2 on the door, align mounting holes with the drawn centerline, square with the edge of the door at the distance shown, mark centers of slots, and center punch (4) holes.



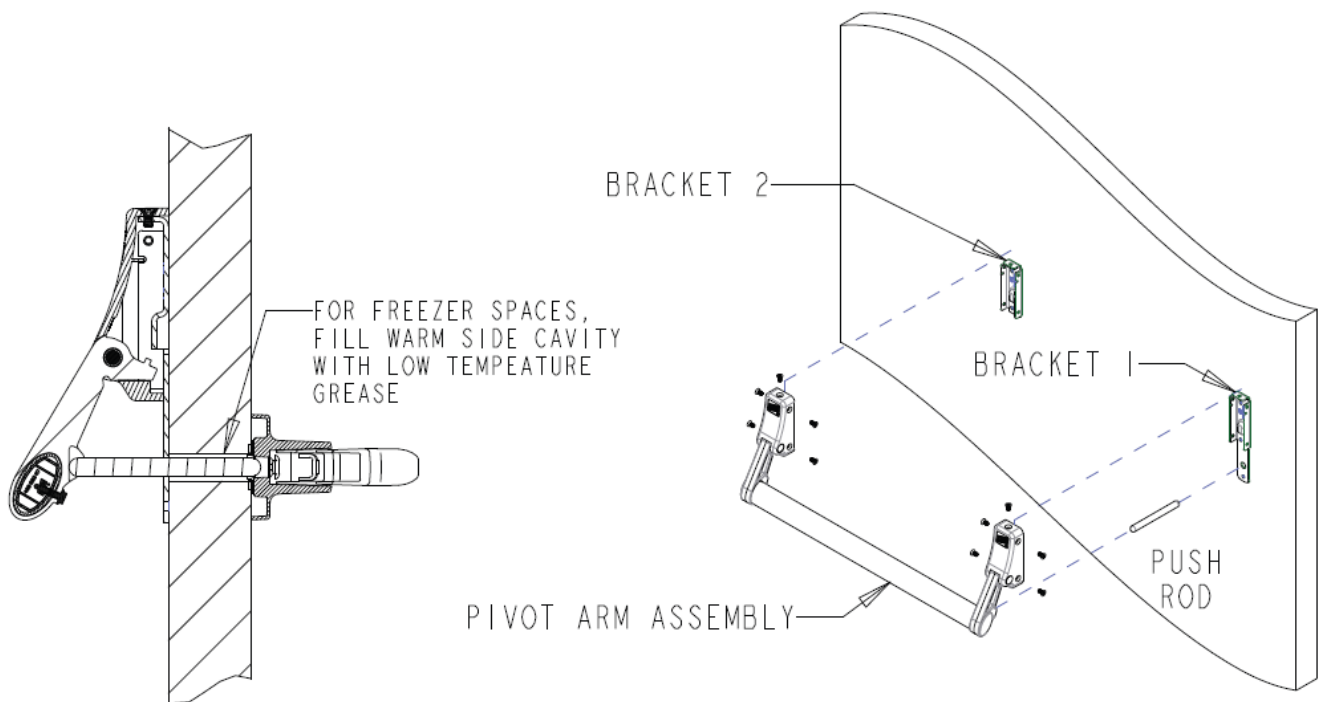
4. Drill a 3/4" diameter (19.1 mm) hole through the door. The hole must be square to the door surface for proper alignment and operation. At this time, drill holes size appropriate for self-threading structural 1/4-20 screws or 1/4-20 type bolts.



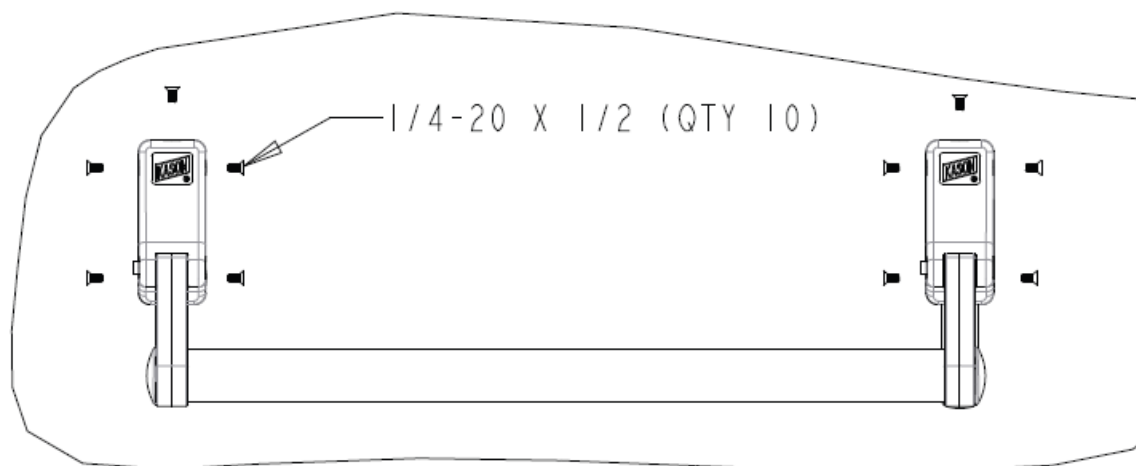
5. Install brackets 1 and 2 with 1/4-20 structural hardware (not included).



6. Install pivot arm assembly and push rod on Brackets 1 and 2.

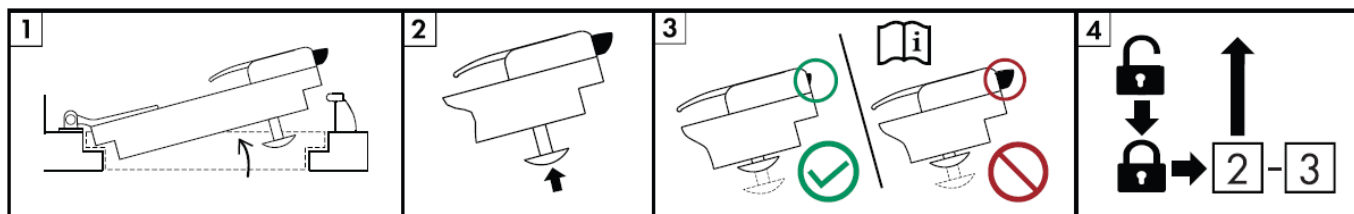


7. Secure pivot arm assembly with hardware provided, test function, and use instruction sheet to complete installation.



WARNING
ENTRAPMENT AND FREEZE HAZARD

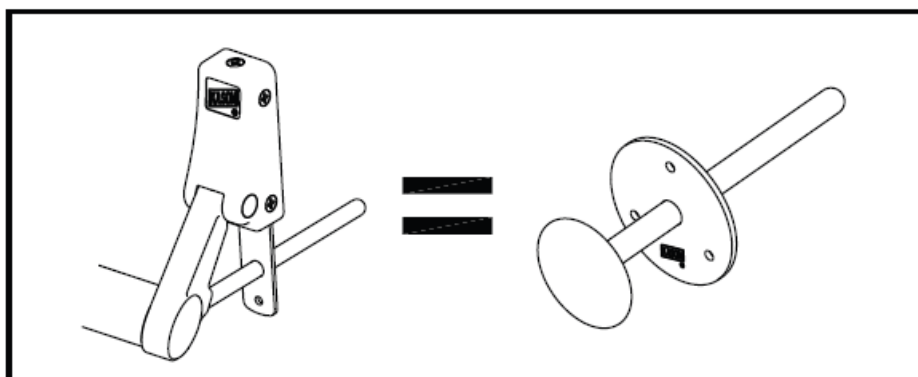
- Failure to follow the installation and testing procedures may result in personnel being entrapped and subject to extreme cold, freezing temperatures, and possibly death.
- Affix the safety decal, that came with the latch, to the door near the latch or the inside release.
- The door hardware includes a SafeGuard® latch, which is designed with an inside release that will operate the latch to open the door from the inside when the latch has been locked on the outside. Extreme or harsh use conditions of the latch, inside release, or walk-in door, may damage or impair the function of the latch. For this reason, it is important to inspect and test the function of the latch and inside release daily before entering the walk-in. Should the latch or inside release fail to release the latch and allow the door to open from the inside, do not enter the walk-in and report the problem to management so that the door, latch, or inside release may be serviced by a professional.



TESTING PROCEDURE

1. Open the door.
2. With the door open, push to depress the inside release knob (or push bar).
3. (A) If the latch tongue retracts substantially into the latch with the release knob depressed, the latch and inside release are functioning properly.
4. (B) If the latch tongue does not retract substantially into the latch, do not enter the walk-in, and notify management to have the door serviced.
5. Lock the door using a key cylinder and/or padlock and repeat steps 2 and 3.

Note: After passing the step 4 test with the latch locked, unlock the latch and continue with normal use of the door.



Note:

The actual latch or inside release provided with the door may look different than those shown in the testing diagram above. Refer to the instructions and safety decal provided with your latch.

Contact Information

- kasonind.com
- 1.800.935.2766

© 2024 Kason Industries, Inc.

Documents / Resources



[KASON 0488C Walk In Push Bar Inside Release](#) [pdf] Instruction Manual
0488C Walk In Push Bar Inside Release, 0488C, Walk In Push Bar Inside Release, Push Bar In
side Release, Bar Inside Release, Inside Release

References

- [User Manual](#)

[Manuals+](#), [Privacy Policy](#)

This website is an independent publication and is neither affiliated with nor endorsed by any of the trademark owners. The "Bluetooth®" word mark and logos are registered trademarks owned by Bluetooth SIG, Inc. The "Wi-Fi®" word mark and logos are registered trademarks owned by the Wi-Fi Alliance. Any use of these marks on this website does not imply any affiliation with or endorsement.