

**Kasernet V2
Electronic Logging
Devices**



Kasernet V2 Electronic Logging Devices User Guide

[Home](#) » [Kasernet](#) » Kasernet V2 Electronic Logging Devices User Guide 

Contents

- [1 Kasernet V2 Electronic Logging Devices](#)
- [2 Welcome to the 2025 Buyer's Guide for ELDs](#)
- [3 How ELDs and GPS Technology Work](#)
- [4 A Look at ELD Compliance in Cost Savings](#)
- [5 ELD Benefits: How Managers and Drivers Win](#)
- [6 Quick HW Install Guide](#)
- [7 Overview of Giveme HW connection](#)
- [8 Documents / Resources](#)
 - [8.1 References](#)
- [9 Related Posts](#)



Kasernet V2 Electronic Logging Devices



Welcome to the 2025 Buyer's Guide for ELDs

For the past few years, industry mandates and the Federal Motor Carrier Safety Administration (FMCSA) have conquered the spotlight. The suspension of the Hours-of-Service (HOS) 34-hours restart rule and the electronic logging device (ELD) proposal has businesses up in arms, thinking about what steps they should take next to keep their fleet compliant. The mandatory use of ELDs in commercial fleets across the country is near. The impact of the ruling can be easily underestimated, largely due to the implementation, suspension and reinstatement cycle that these types of proposals undergo. It's difficult for companies to keep up and stay compliant each time a lawful measure takes effect. Fleet managers and owners don't know where to look next. Staying prepared is the best method for companies to remain competitive, compliant, safe and violation-free during these ever-evolving times. With only a few telematics providers offering federally compliant electronic logbooks and digital vehicle inspection reports, businesses can easily fall prey to unreliable systems that fail to support mandates and enterprise-level fleets. The right ELD compliance solution can stave off costly violations, safety concerns and strengthen a company's competitive edge. If meeting federal compliance is what your business is looking to get from an ELD investment, the research may not prove difficult. But if your company's goal is to increase return on investment in the long-term, only a few ELD solutions on the market can address compliance needs and beyond. Understanding the value of an electronic on-board recording device and the features it offers can help. It's easy to assume that any version of electronic on-board recorders can be outfitted to address federal ELD standards. That, however, is not the case. Mobile HOS applications and other forms of electronic devices that claim to offer compliance often fail to sync with a vehicle's electronic control module (ECM) via J-Bus or OBD-II connection. Without those basic compliance features needed to meet FMCSA guidelines, companies will need to find a suitable option that can support FMCSA's final rule for ELDs once it's in effect. The GPS fleet tracking industry has been evolving at a rapid pace, and so have a handful of software providers and the compliance tools they offer. This guide will help you identify the ELD concept and choose the best solution for your workforce, catapulting your team to where it needs to be—no matter how often regulations change.

- Staying prepared is the best method for companies to remain competitive, compliant, safe and violation-free during these ever-evolving times.

What Are ELDs?

Electronic logging devices (ELDs), electronic on-board recording devices (EOBRDs), automatic on-board

recording devices (AOBRDs), on-board computers (OBCs)—what's the difference? Understanding the contrasts between the types is a struggle, especially for businesses looking to purchase a compliance solution that speaks to their needs. The difference lies in how and when these devices originated—whether they were created to meet federal regulations, such as the AOBRD for FMCSA rule 395.15 and the EOBR to digitally track Record of Duty Status (RODS), or simply introduce a digital option to track driver hours and other data. Nonetheless, it's the long-term benefits a solution can provide that should ultimately shape your decision-making.



Once the final ruling for the ELD requirement takes place, the Federal Motor Carrier Safety Administration will allow up to two to four years to meet compliance. EOBRDs and AOBRDs will be outfitted to meet ELD standards; any one of these systems will be able to address ELD regulations. But which ELD system can provide a scalability factor that grows with your business demands, in addition to offering compliance and safety across your fleet? It's not impossible to figure out, if you know where to look.

Why Invest in ELDs?

Nothing is more valuable for commercial businesses and fleets than staying compliant with ongoing mandates, along with cutting costs and increase efficiency. Investing in an electronic logging device solution that not only helps you meet current and future FMCSA regulations, but also offers features that can cut operational costs and boost safety and productivity, is a responsible choice for long-term longevity in your field. Truth is, switching from paper logs to electronic forms can be a frightening process for some companies. Most assume that electronic devices are costly, and secondly, drivers see digital processes as another way to impose big brother-like tactics. That doesn't seem to be the case. Surveys have shown that most drivers who use ELDs are not only comfortably adapting, they also notice that daily tasks are easier to achieve. No matter which compliance solution you decide to look into, the provider you choose should offer a versatile system that goes beyond compliance, tracking real-time vehicle activity and performance, including driver behavior and more.

What Can ELDs Do for Your Business?

Whether your business is still on paper logs, or you refuse to give in to technological advances, ELDs can turn your world right side up through myriad benefits for you and your workforce.

Improve Compliance, Productivity and Safety

With federally compliant electronic in-vehicle devices like AOBRDs or EOBRs, companies are able to offer their drivers an efficient way to tackle daily tasks, such as the ability to enter HOS data and submit electronically from the cab. Paper logs require drivers to pencil in their work hours and fax their logs from fuel stops—a time-consuming, error-prone and pricey process companies don't need. With electronic driver logs and vehicle inspection reports, businesses receive driver data in digital form, saving time and staying compliant.

Automate Driver Tasks

The most advanced ELD systems, like AOBRDs, on the market help automate everyday driver tasks through a line of features like digital inspection reports and truck-grade navigation that takes into account road restrictions and

other measures, based on a driver's vehicle type. Plus, traffic and weigh stations stops are a breeze: HOS data is easily accessible on ELDs, eliminating lengthy processing time. These all-in-one in-cab devices keep drivers on task and managers in the know, empowering companies to stay competitive at every level.

Boost Driver and Dispatch Communication

Advanced ELDs systems come preinstalled with a slew of driver apps, including two-way messaging, in addition to offering federally compliant electronic log books and vehicle inspection reports. Drivers can connect with headquarters to alert them about lunch breaks, send arrival and departure times, or ask for help when needed without having to use mobile phones or leave their vehicles.

Save Time on Repairs and Maintenance

Ever had to sideline a vehicle due to unforeseen maintenance or repairs? It's a costly decision. Along with electronic driver logs, the best ELD solutions provide digital driver vehicle inspection reports for post- and pre-trip inspections. Despite the federal government recently announcing that these reports are no longer mandatory if no defects are found, it's wise to track vehicle inefficiencies so your mechanics attend to them quickly, keeping your fleet strong and on the road year-round.

Reduce Your Carbon Footprint

ELDs, including AOBRDs and EOBRDs, are paper-free, empowering drivers to forgo paper logs and instead use electronic driver logs (E-Logs) to enter and submit their work hours. Companies save big due to less paperwork involved for both managers and drivers. On top of saving hundreds of dollars on a paper-free system, businesses remain FMCSA-compliant without having to compromise the integrity of their HOS data.

Visibility into Vehicle Activity and Driver Safety

The best electronic logging devices are integrated with cloud-based software systems that go beyond tracking HOS status changes. The systems include GPS fleet tracking features, such as real-time access to vehicle locations on a live, interactive map, ensuring that managers stay in touch with their drivers, in addition to maintaining federal compliance. Added benefits include insight into driver and vehicle safety through advanced dashboards, reports, and business intelligence data that can be customized to show what matters most to your company.

Increase Your Bottom Line

The right ELD system does more than manage your hours of service; it gives you visibility into vehicle locations in real-time, including ignition statuses, fleet analytics based on fuel usages and safety parameters, such as speeding and harsh braking, and dozens of customizable and sharable performance reports. Data partnerships are also added features that can boost revenue and reduce audit fees and fines, eliminate road-side submissions, and more, enhancing efficiencies and your operation.

How ELDs and GPS Technology Work

Federally compliant electronic logging and on-board recording devices can record, store and send Hours-of-Service data right to a manager's desktop or laptop. But how does that work? First, location data is pulled in three primary ways: GPS, vehicle diagnostics plug-ins, and driver input data. These main functions are fundamental to the everyday cycle of entering, submitting and receiving ELD data. See for yourself:



A Look at ELD Compliance in Cost Savings

Sometimes when things sound too good to be true, it's because they probably are in the numbers. Sample calculations of how much you can save annually provide insight into the value of an ELD system. This breakdown is based on real-life estimates and benefits gained from implementing an effective solution. All it takes is finding the right compliance system and watching how your team and bottom line grow year after year after year.

The Numbers

Here's how a typical 20-truck fleet can save almost \$60,000 on compliance and overall fleet savings with an electronic logging device solution that integrates with GPS tracking.*

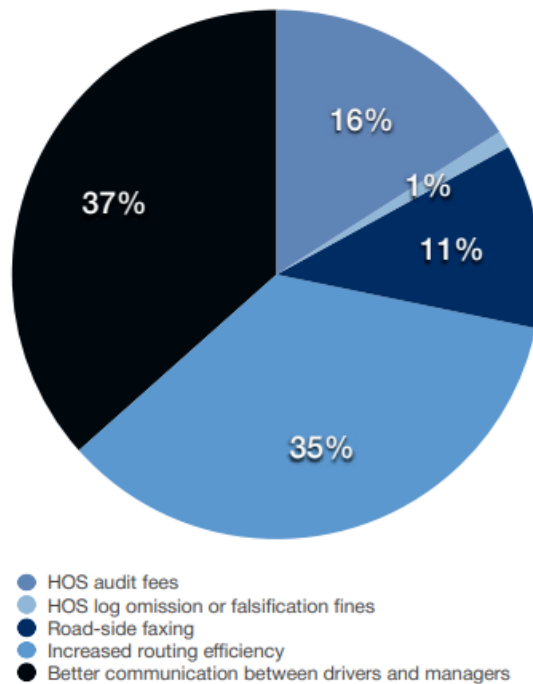
Fines:

A reduction in HOS audit fees	\$6,800
HOS log omission or falsification fines	\$450

Overall Fleet Savings:

Road-side faxing	\$4,800
Increased routing efficiency	\$15,000
Better communication between drivers and managers	\$15,600
Increased efficiency in vehicle inspections	\$9,200
Prevention of manual errors in paper logs	\$6,000
Total annual savings for a 20-truck fleet	\$57,850

Percentage of Savings



ELD Benefits: How Managers and Drivers Win

ELD functionality can elevate a business from satisfactory to top-performing. Driver efficiency increases, while improved fleet management optimizes everyday tasks and performance. Federal compliance, reduced paperwork, automated driver tasks, electronic driver logs, HOS reporting to track statuses and locations, and digital driver vehicle inspection reports sent directly from a driver's cab—you can achieve this and more. All it takes is the right ELD system at your reach.

Manager Benefits

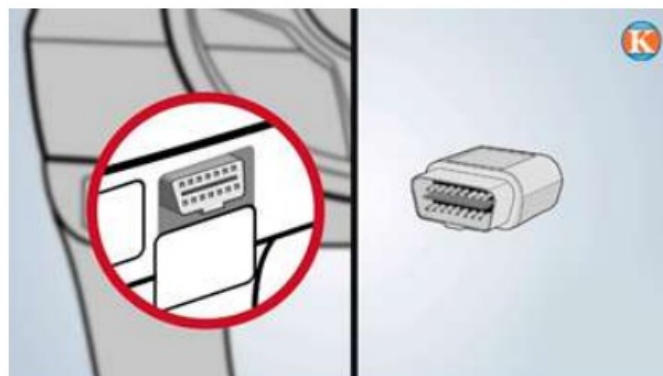
- Eliminate paper logs and timely driver submissions, such as faxing at fuel stops, and future fines associated with manual entry errors (period consistency)
- Quick communication between managers and drivers—response times improve and managers are free to focus on other managerial duties, saving time and resources
- Instant insight into available and remaining hours of service for each driver, including notification of violations as they happen in real time
- Managerial access to HOS driver log summaries and reports at any time, improving decision-making
- A federally compliant system is in place, allowing businesses to operate under the most recent FMCSA regulations

- Driver work hours and time on the road is easily collected, helping in planning and scheduling
- Data is captured, including statuses and engine use, which can prove useful for possible disputes and legal proceedings.

Driver Benefits

- Logs are automated, eliminating time-consuming processes, such as manually entering hours on paper logs and stopping to fax at fuel stops, and human error
- Insight into cumulative and remaining hours of service before mandatory resets
- Faster and more compliant roadside inspection access for officers and scale houses
- Less paper processes, reducing the chances of lost log grids and summaries and associated fines
- Improved overtime hours due to less paperwork completions and submissions when on the road
- Additional ELD features, such as truck navigation, helps drivers focus on road safety and timely arrival to customer sites
- Reduced driver abuse and coercion due to secure data entry through electronic log books and signatures to verify accurate hours worked.

Quick HW Install Guide



Overview of Giveme HW connection

- Connected Vehicle Device
- Connecting Giveme to Tablet/Cellphone



ELD Features

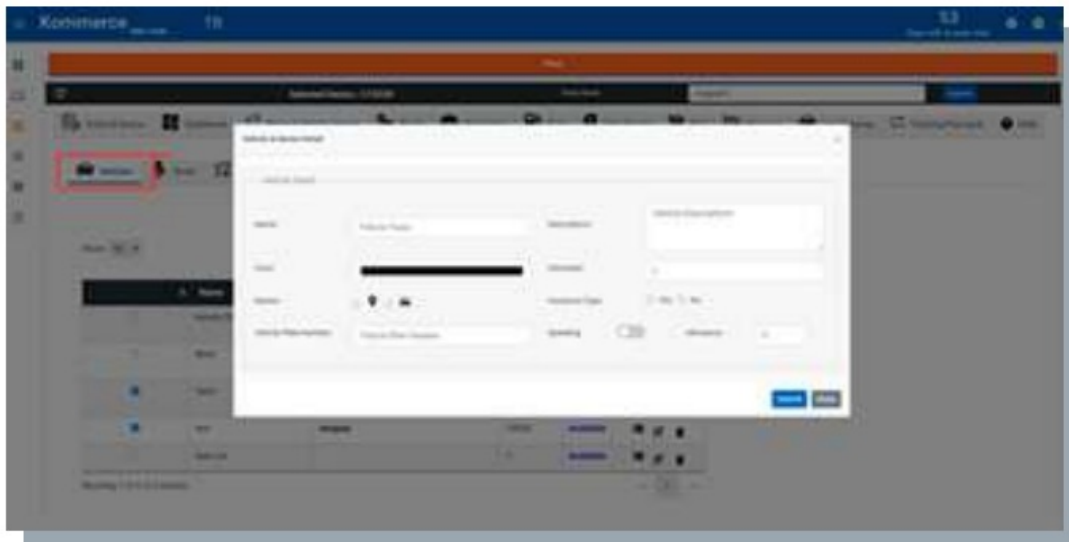
- ELD Report
- HOS Chart
- ELD Chart

ELD Setup

- Access kommerce to add the device



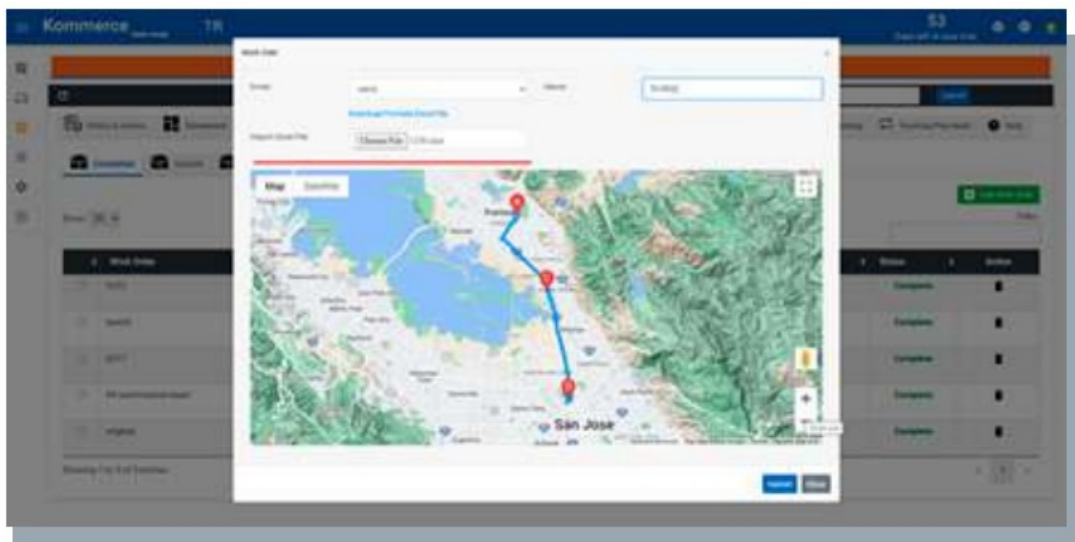
- Add a Vehicle



- Add a Driver



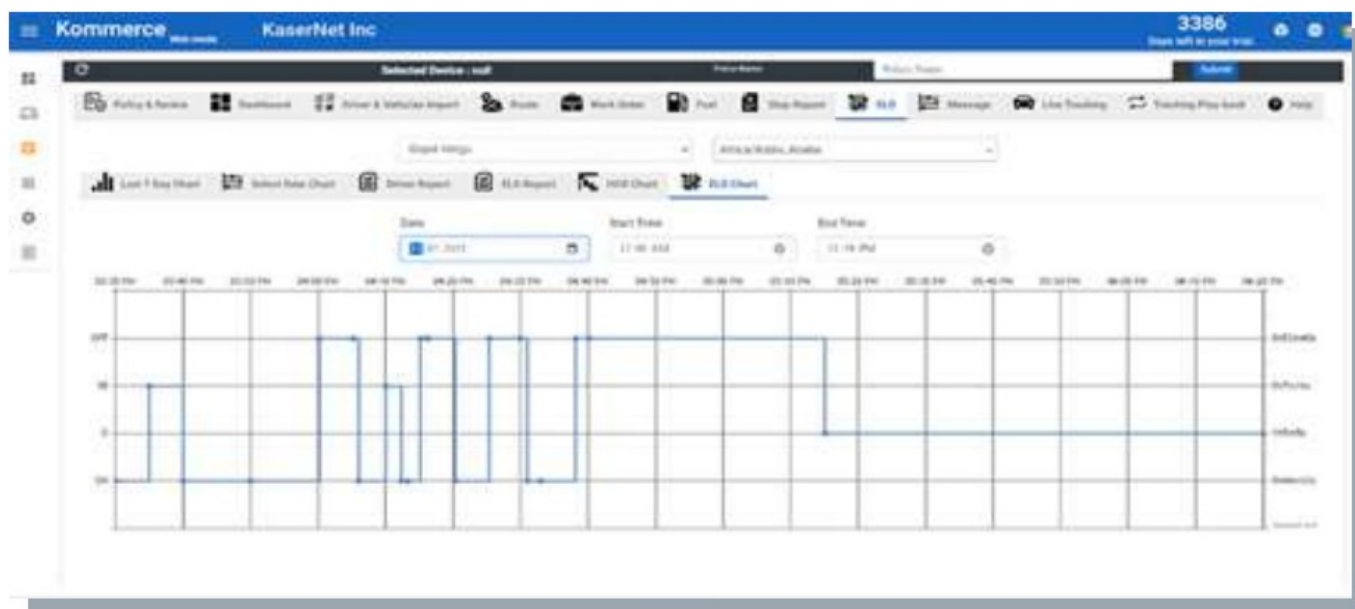
- Add an order and select the order



Navigating the Dashboard

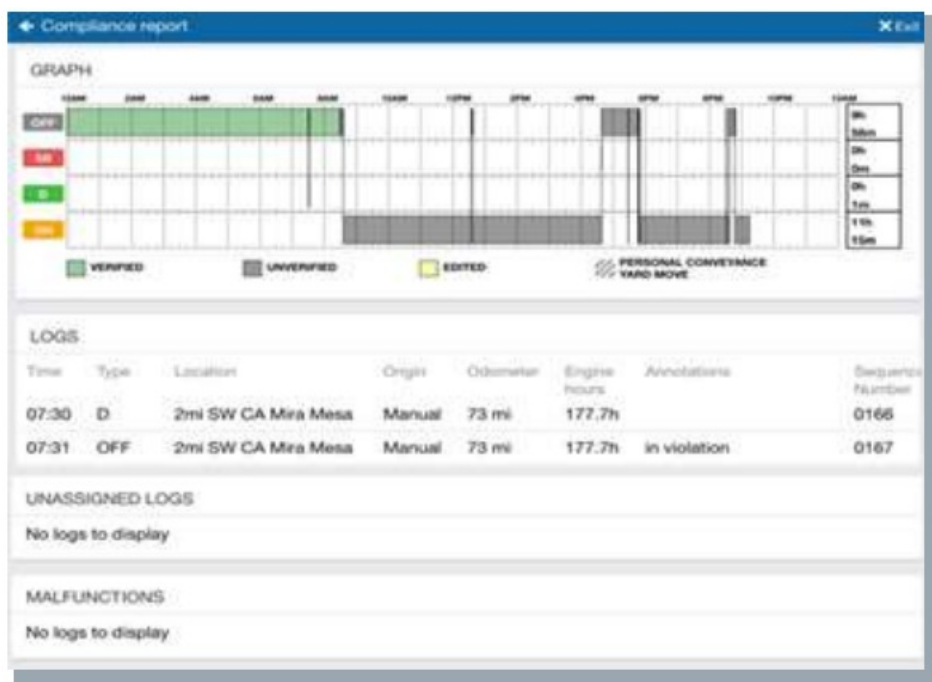
After completing all login tasks, you are taken to the Dashboard. The Dashboard is the main interface used for navigating the Drive App. Shortcuts to features including App settings and Add-Ins that you have installed are available at the bottom on all the screens.

Note: Your dashboard may look different based on your user clearances and the Add-Ins that you have installed.



Compliance Print

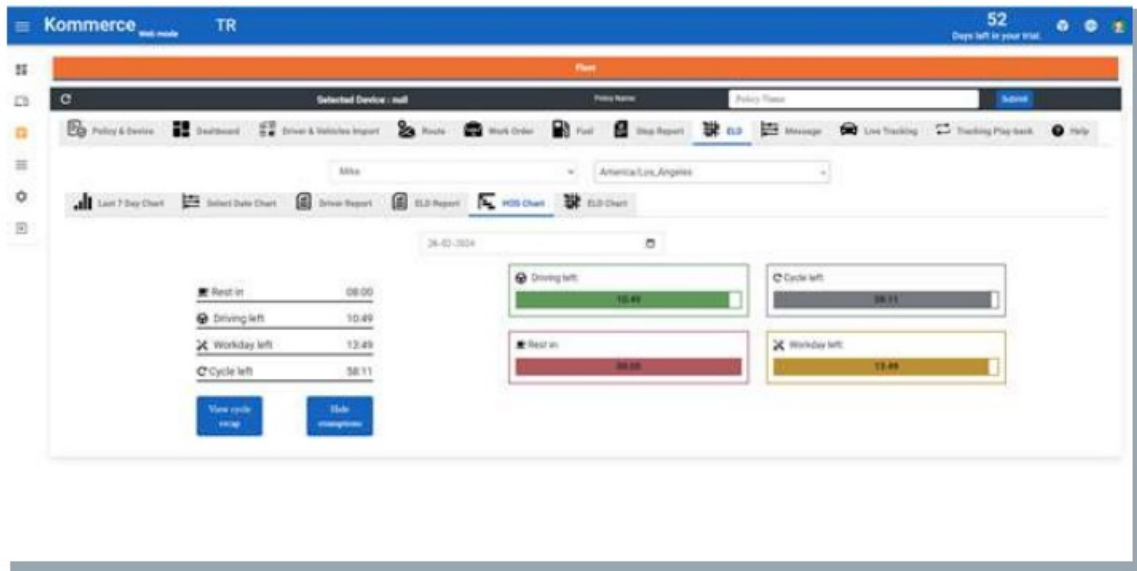
Scroll down to the Graph to display your duty status and logs over 24 hours for a given day. When you apply for the Personal Conveyance exemption and drive the vehicle, the Compliance report does not count the odometer or engine hours for that duration. Keep scrolling to display any unassigned logs and malfunctions. After the inspection is over, press X Exit in the top-right corner to exit Inspection Mode. If you hand your mobile device to the Inspector in order to scroll through the Compliant Print, the App prompts the Inspector to return the device to the driver.



Hours of Services

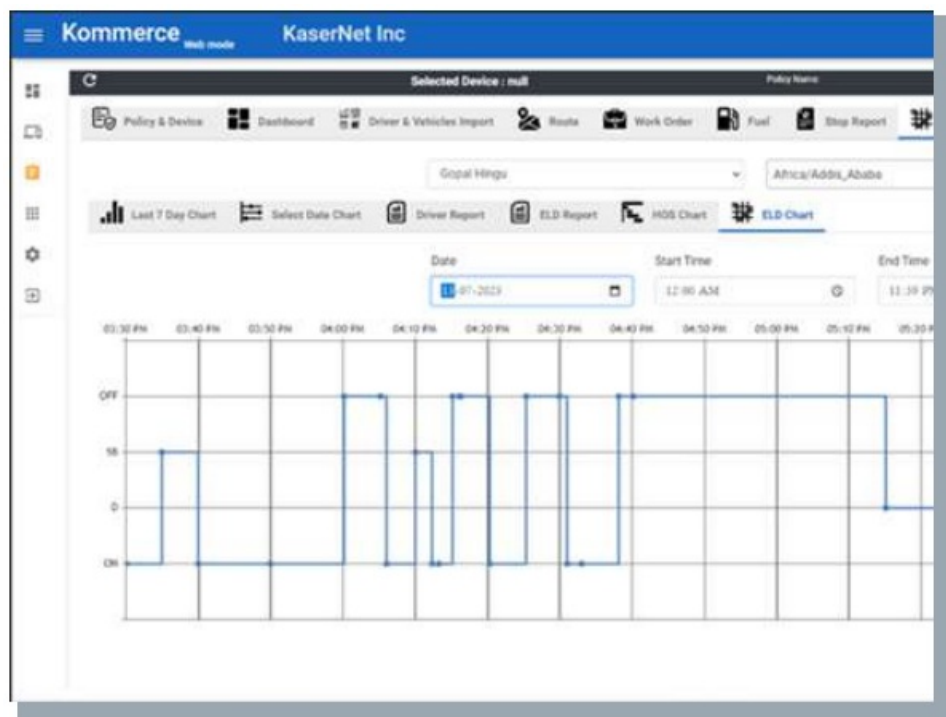
The HOS feature provides all the tools necessary for tracking and recording your duty status. It also provides the ability to verify logs, apply exemptions, and provide information for roadside inspections. The HOS screen is divided into Status and Logs tabs. The Status tab allows you to view and set your duty status, as well as view and apply exemptions. Duty status is displayed by one of the four buttons on the screen:

- OFF
- Sleeper Berth (SB)
- Drive (D)
- ON



Logs Tab

The Logs tab displays a list of all Records of Duty Status (RODS) for the past 14 or 16 days, depending on the ruleset, and any violations incurred. Logs are displayed below the graph, one day at a time, and can be navigated using the arrows at the top of the screen, or by pressing the date picker to display the calendar.



Viewing Message

Utilize the messaging feature to receive notifications and route information from the fleet manager.



Logging out

Follow the proper procedure to log out of the Drive App, ensuring disassociation from the vehicle and completion of end-of-day tasks.



Clock In/Clock Out

Utilize the Clock In/Clock Out feature to manage login/logout tasks efficiently, with options to remain logged in or resume driving as needed. For technical support, contact the provided numbers for both technical and driver assistance. Should you have any further questions or require assistance, feel free to reach out. Happy driving with Kasernet!

Technical Driving

Based on fleet size and configuration we offer multiple support tiers to drivers. Our 24-hour support provides general assistance, help desk, and technical support.

Support

Driving assistance is available. Support services are specifically designed to meet customer needs by assisting with platform operations, business issues, general questions, and the help desk. Users can contact the support number for guidance and assistance whenever necessary.

Feedback and Suggestions

Encourage drivers to provide feedback and suggestions for improving the ELD system, and provide instructions on how they can submit their input. By including these additional sections, you can provide drivers with comprehensive guidance on using the Enterprise ELD system effectively while also addressing any potential concerns or questions they may have.

See the benefits! Visit Our Website Now www.kasernet.com

Documents / Resources



[Kasernet V2 Electronic Logging Devices](#) [pdf] User Guide
V2 Electronic Logging Devices, V2, Electronic Logging Devices, Logging Devices, Devices

References

- [User Manual](#)

[Manuals+](#), [Privacy Policy](#)

This website is an independent publication and is neither affiliated with nor endorsed by any of the trademark owners. The "Bluetooth®" word mark and logos are registered trademarks owned by Bluetooth SIG, Inc. The "Wi-Fi®" word mark and logos are registered trademarks owned by the Wi-Fi Alliance. Any use of these marks on this website does not imply any affiliation with or endorsement.