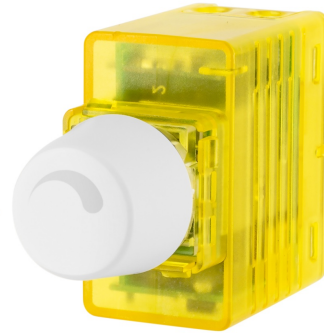


**karlik**

**MINI\_MRO-3  
Electronic  
Dimmer Push-  
Rotary  
Mechanism**



# Karlik MINI\_MRO-3 Electronic Dimmer Push-Rotary Mechanism User Guide

[Home](#) » [Karlik](#) » Karlik MINI\_MRO-3 Electronic Dimmer Push-Rotary Mechanism User Guide 

## Contents

- [1 Karlik MINI\\_MRO-3 Electronic Dimmer Push-Rotary Mechanism](#)
- [2 Product Usage Instructions](#)
- [3 Technical data](#)
- [4 Installation](#)
- [5 Components](#)
- [6 Installation instructions](#)
- [7 FAQ](#)
- [8 Documents / Resources](#)
  - [8.1 References](#)

**karlik**

**Karlik MINI\_MRO-3 Electronic Dimmer Push-Rotary Mechanism**



## **Product Usage Instructions**

### **Electric Connection Scheme:**

1. Connect the electronic lightning controller following the provided scheme.
2. Make sure to adjust the minimal brightness using the trimmer and connect the necessary components as indicated.

### **Installation Instructions:**

1. Install the electronic light control mechanism in the mounting box ensuring proper alignment with adjacent mechanisms.
2. Maintain a distance of approximately 1 mm between the central frame of the dimmer and adjacent products

## **USER MANUAL – ELECTRONIC DIMMER PUSH-ROTARY MECHANISM FOR USE WITH 1-10V VOLTAGE-CONTROLLED POWER SUPPLY UNIT**

### **Characteristics of the electronic dimmer push-rotary mechanism for use with 1-10V voltage-controlled power supply unit**

Electronic push-rotary dimmer designed to switch on and off and regulate the light intensity:

- LED lighting powered by dimmable LED power supplies controlled by 1-10V,
- 12V halogens powered by dimmable electronic transformers controlled by 1-10V,
- fluorescent lamps powered by dimmable electronic ballasts controlled by 1-10V.

A potentiometer with a switch is used to adjust the light level. The controller is equipped with short-circuit protection. The system enables intelligent control of lighting systems, providing comfort, convenience and economy in use. In this way, it increases daily savings in electricity, the consumption of which is proportional to the lighting level.

## Technical data

Symbol	MRO-3
Power supply	250V~ 50Hz
Min. control voltage	1 V DC
Max. control voltage	12 V DC
Max. control current	50 mA
Fuse	F-2A 250V
Number of connection clamps	4
Cross section of connection cables	max 1,5 mm <sup>2</sup>
Fixing of the casing	standard flush-mounted wall box fi 60mm
Temperature operation range	from -20oC to +45oC
Shield protection class	II (see: "Warning! Protection class of the shield")
Overvoltage category	II
Degree of contamination	2
Dimensions with outer frame	80,00 x 80,00 x 54,40 mm
Protection index	IP 20

## Warranty terms

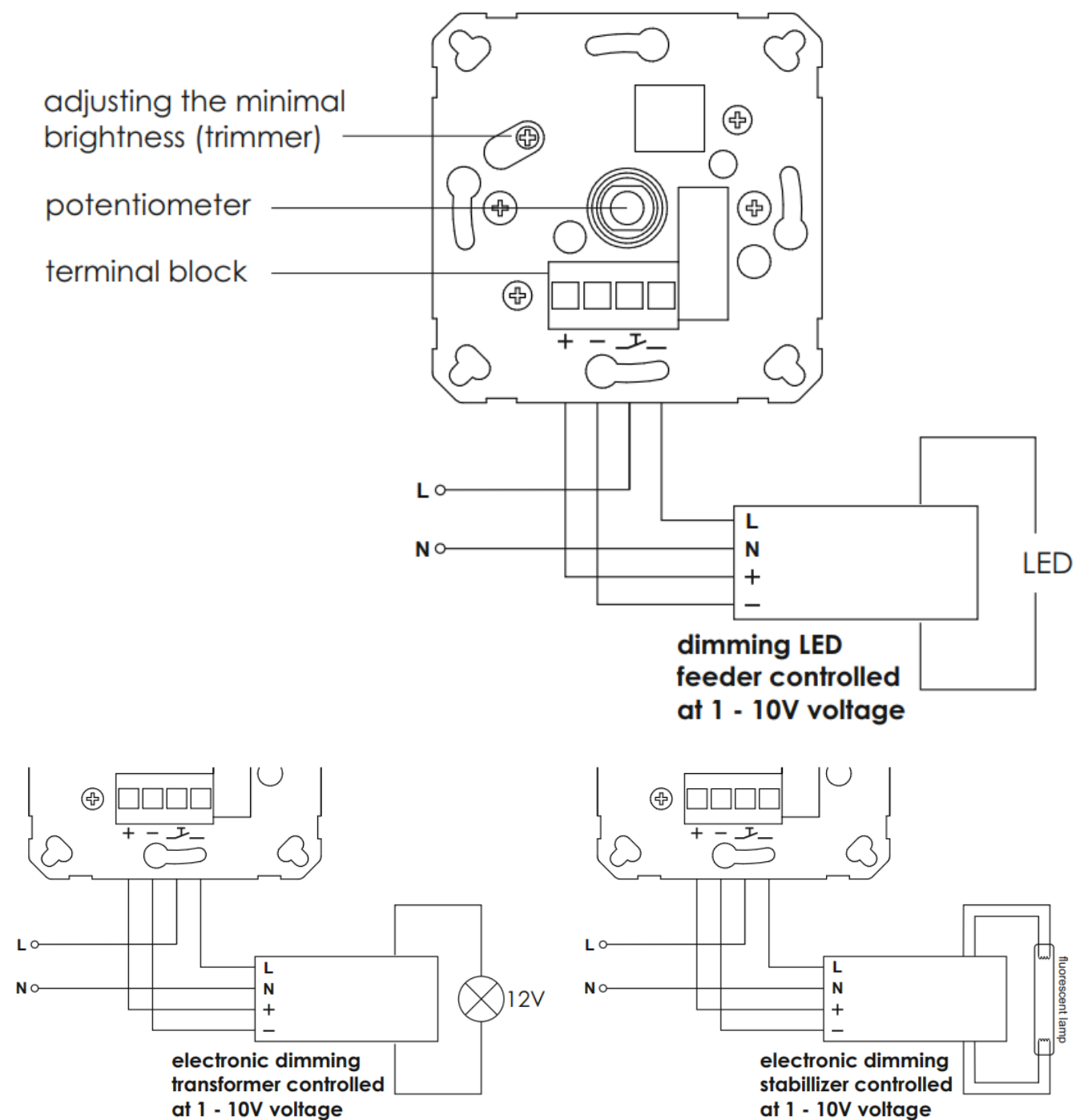
The guarantee is provided for a term of twelve months from the date of purchase. The defective controller must be delivered to the producer or to the seller with a purchase document. The\ guarantee does not cover the fuse exchange, mechanical damage, damages raised by self-repair or improper use. The warranty period shall be extended by the duration of the repair.

Warning! Protection class of the shield The installation must be carried out by a qualified person at the de-energized voltage and must comply with national safety standards. In order to maintain Class II protection, the user must be prevented from accessing the rear parts of the installation.

## Installation

1. Switch off the mains fuses of the home installation.
2. Dismantle the control key, then unscrew the nut, and remove the washer and the dimmer adapter with the intermediate frame (see page 3 – components).
3. Connect the wires to the connection terminals according to the wiring diagram.
4. Install the dimmer module in the installation box using the box mounting screws or the metal claws included with the controller.
5. Install the controller components in the following order: external frame, intermediate frame, adapter and washer.
6. Screw in the nut, then mount the control key.
7. Switch on the main fuses of the home installation and perform a test run.

## Electric connection scheme of the electronic lightning controller

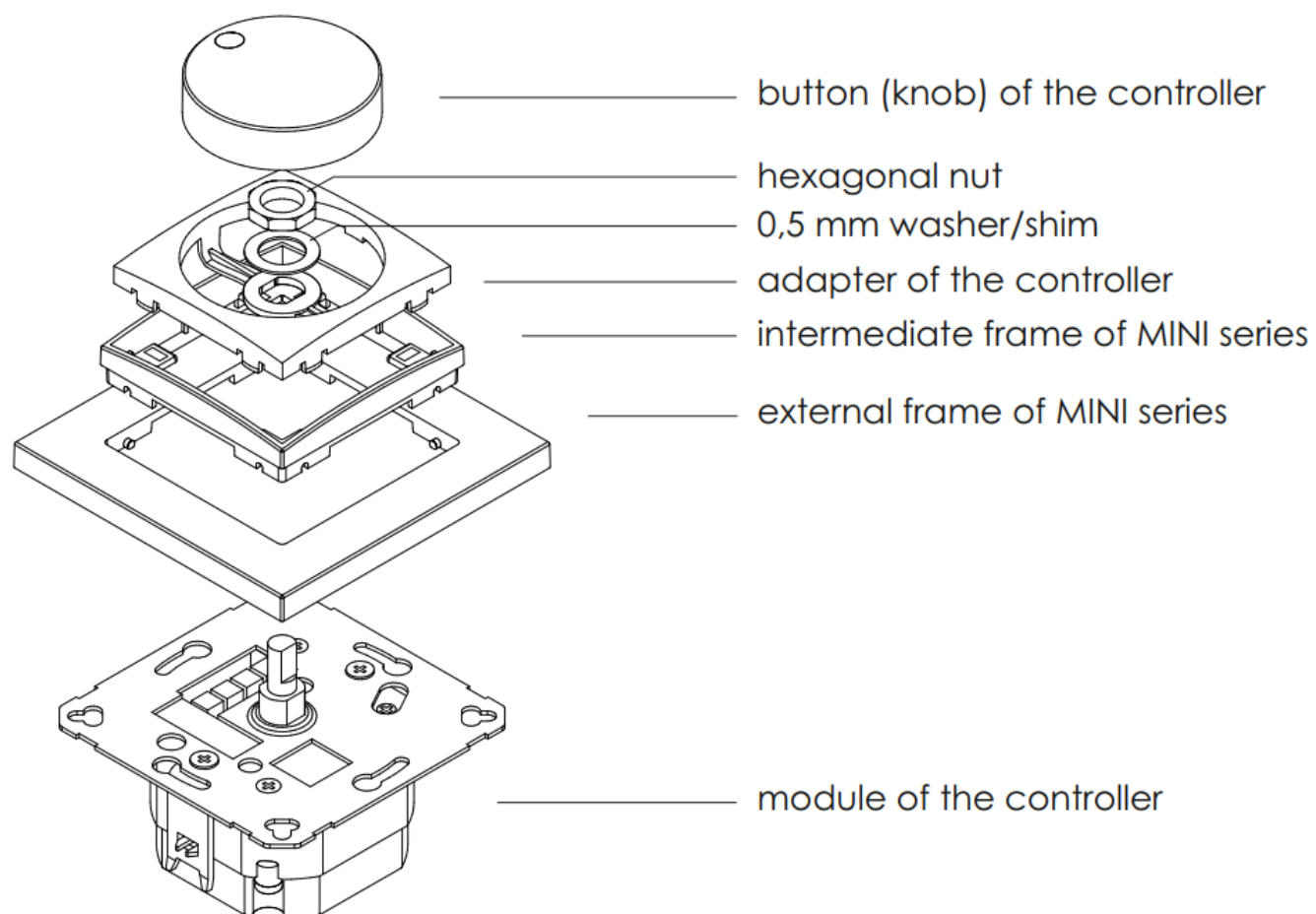


### Warning!

The product is compatible with DECO / MINI surface-mounted folding boxes. In order to properly install the lighting regulator in the box, unscrew the metal claws located at the mechanism.

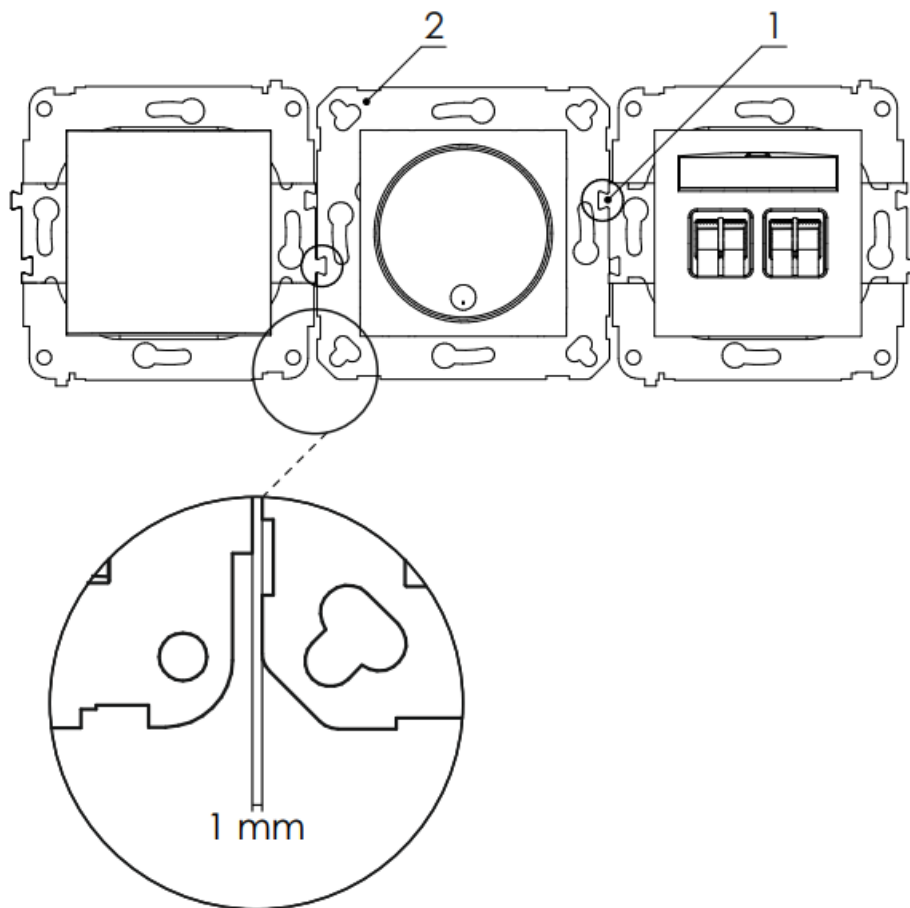
## Components

### Components of the electronic lightning controller with push and rotary button for LED lamps



## Installation instructions

### Installation instructions for electronic light controller mechanism in multiple frames



1. First, install the electronic light control mechanism in the mounting box. The other adjacent mechanisms are installed so that the “dovetails”(1) (if any) overlap the central plate of the controller (2).
2. The distance between the central frame of the dimmer and the adjacent products should be about 1 mm.

- Karlik Elektrotechnik Sp. z o. o. | ul. Wrzesinska 29
- 62-330 Nekla
- tel. +48 61 437 34 00 1
- e-mail: [karlik@karlik.pl](mailto:karlik@karlik.pl)
- [www.karlik.pl](http://www.karlik.pl)

## FAQ

- **Q: What is the warranty period for the product?**
  - A: The warranty is valid for twelve months from the date of purchase, provided the defective controller is returned with a purchase document.
- **Q: How should the product be installed in DECO / MINI surface-mounted folding boxes?**
  - A: To install in these boxes, unscrew the metal claws located at the mechanism and ensure proper alignment for installation.

## Documents / Resources



[Karlik MINI\\_MRO-3 Electronic Dimmer Push-Rotary Mechanism](#) [pdf] User Guide  
MINI\_MRO-3, MINI\_MRO-3 Electronic Dimmer Push-Rotary Mechanism, MINI\_MRO-3, Electro  
nic Dimmer Push-Rotary Mechanism, Dimmer Push-Rotary Mechanism, Push-Rotary Mechanis  
m, Mechanism

References

- [User Manual](#)

[Manuals+.](#) [Privacy Policy](#)

This website is an independent publication and is neither affiliated with nor endorsed by any of the trademark owners. The "Bluetooth®" word mark and logos are registered trademarks owned by Bluetooth SIG, Inc. The "Wi-Fi®" word mark and logos are registered trademarks owned by the Wi-Fi Alliance. Any use of these marks on this website does not imply any affiliation with or endorsement.