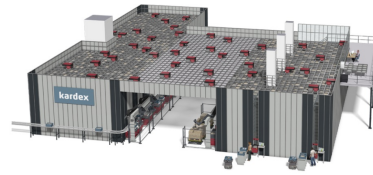


Kardex AutoStore Implements the World's First Large



# Kardex AutoStore Implements the World's First Large User Guide

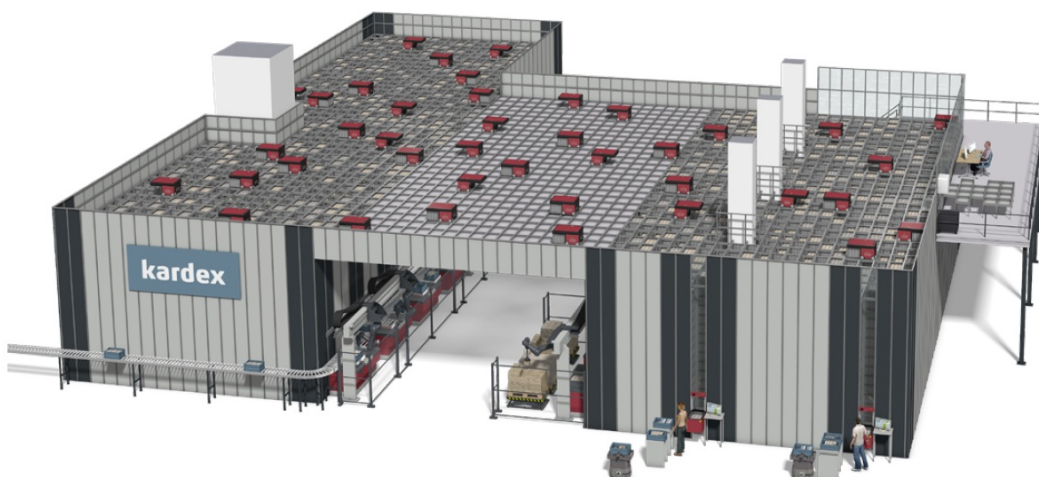
[Home](#) » [Kardex](#) » Kardex AutoStore Implements the World's First Large User Guide 

## Contents

- [1 Kardex AutoStore Implements the World's First Large](#)
- [2 Product Information](#)
- [3 Product Usage Instructions](#)
- [4 Stay a step ahead](#)
- [5 How AutoStore works](#)
- [6 AutoStore components](#)
- [7 Controller](#)
- [8 Benefits](#)
- [9 Documents / Resources](#)
  - [9.1 References](#)

# kardex

**Kardex AutoStore Implements the World's First Large**



## Specifications

- **Product:** AutoStore
- **Type:** High-performance, space-saving storage and picking solution for small parts
- **Capacity:** Manage thousands of SKUs
- **Robots:** Autonomous high-speed robots with loads of up to 30 kilograms
- **Grid:** Aluminum cubic grid for vertically stacked storage bins
- **Integration:** Wireless communication with a control system

## Product Information

- Revolutionize your warehouse capacity with AutoStore, a high-performance solution that allows you to manage thousands of SKUs efficiently.
- The system utilizes autonomous high-speed robots that store and move goods within a space-saving aluminum grid, optimizing energy usage and order fulfillment speed.

## How AutoStore Works

- AutoStore features autonomous high-speed robots that pick up storage bins, rearrange them, and present them at workstations. The robots operate 24/7, automatically recharging when needed.
- The system is modular, allowing users to expand capacity without interrupting operations by adding more bins, robots, and workstations.

## AutoStore Components

- **Grid:** Holds bins in place and guides robots.
- **Robots:** Travel on the grid with loads up to 30kg, optimized for energy efficiency.
- **Bins:** Storage containers for small parts.
- **Ports:** Interfaces for connecting external events.
- **Controller:** Manages robot tasks and system operations.

## Benefits

- **High-Density Storage:** Holds four times as many items as manual storage in the same footprint.
- **Flexible:** Customizable to fit various structures and shapes.
- **Adaptable:** Can be installed on mezzanines or multiple floor levels for optimized space usage.

## Product Usage Instructions

1. Ensure the grid is set up securely and all bins are in place.
2. Activate the robots and ensure they are wirelessly connected to the control system.
3. Monitor the system as robots pick, rearrange, and present bins at workstations.
4. Add more components as needed to expand warehouse capacity without disruption.

## Frequently Asked Questions (FAQ)

### Q: How can AutoStore help me with e-commerce order fulfillment?

**A:** AutoStore offers features to help e-commerce warehouses manage same-day delivery demands, individualized products, and stress-free returns, allowing them to meet customer expectations efficiently.

### Q: How does AutoStore support the just-in-time supply of production lines?

**A:** AutoStore enables companies to keep a growing range of parts in stock and provide them as needed, helping businesses meet changing customer requirements effectively.

## Stay a step ahead

- Can you imagine handling four times the number of SKUs within your current warehouse without changing your facility size or shape? Now imagine having the fastest order fulfillment system per square foot on the market.

## What do you think That sounds like a pretty amazing idea, right?

- As a global AutoStore partner, Kardex offers a high-performance, space-saving storage and picking solution for small parts.
- Applicable across multiple industries and able to handle any kind of small parts, high-speed robots from AutoStore are redefining warehouse operations.
- Autonomous robots provide a competitive edge – working fast and efficiently to decrease delivery times, maximize throughput, and enhance the overall customer experience.
- The extremely flexible solution allows users to add and exchange robots, as needed based on business growth and seasonal demands.



- Benefit from flexible storage



- Manage thousands of SKUs



- Increase warehouse capacity



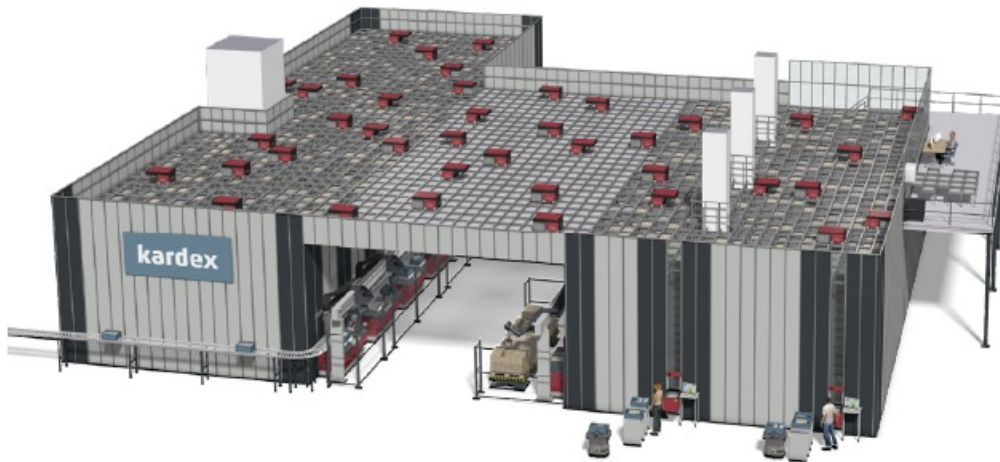
- Accelerate order fulfillment

## How AutoStore works

- Autonomous high-speed robots store and move goods. They work quickly, and efficiently and recharge automatically.
- An aluminum cubic grid holds vertically stacked storage bins while providing tracks for the robots to drive on.
- The autonomous high-speed robots continuously pick up the bins, rearrange them, and present them at goods-in and order-picking workstations.
- The robots work 24/7 and will charge themselves automatically when needed. They optimize energy usage by

operating with or without lighting and avoid excessive charging.

- As customer demands increase, inventory fluctuates, and overall business escalates, users can adjust the modular system. Without interrupting daily operations, they can add more bins, robots, and workstations, and expand the grid.



## **AutoStore components**

- AutoStore features a flexible and modular design – one system with five components.

### **Grid**

- An aluminum grid serves as the basic AutoStore structure. The grid is modular, lightweight, and flexible.
- Users can install it to fit their specific warehouse size and shape and expand or change it as needed.
- Every grid is unique, as Kardex customizes every installation – it can be built around various obstacles or customized to fit unusual-shaped facilities.
- The grid neatly holds the bins in place and guides the robots as they travel across the rails in different directions.

### **Robots**

- AutoStore robots travel along the aluminum grid with loads of up to 30 kilograms. Communicating wirelessly with a control system, they use lifting belts and a gripper plate to retrieve required bins from the grid.
- With energy efficiency as a top priority,

### **AutoStore provides several unique features for the robots including:**

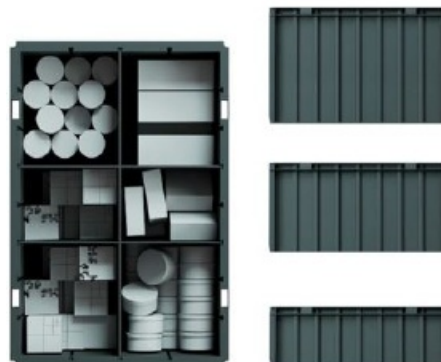
- The ability to operate around the clock regardless of lighting
- Continuous adaption to ensure faster picking times (fast movers stored on top and slow movers stacked over)
- Automatic recharging capabilities are programmed for exactly the right moment – not too early and not too late
- A self-diagnosis / preventive maintenance system that provides an average uptime of 99.6%. If one robot breaks down, another one takes over its tasks

### **Bins**

- A high-density AutoStore bin system is ideal for warehouses operating a high number of SKUs – an average system holds 34,000 bins. Bins are molded from high-grade polyethylene (HDPE).
- Users may also equip systems with special ESD bins to safely store electronics, customize the lengthwise and crosswise dividers for easier handling, and store standard KLT boxes (Euro containers) within the AutoStore bins. Based on individual needs, various configurations are possible:



- **Outside dimensions:** 649 mm × 449 mm (25.6 in × 17.7 in)
- **Inside dimensions:** 603 mm × 403 mm (23.7 in × 15.9 in)
- **Max. Load Capacity:** 30 kg
- **Height outside:** 425 mm (16.7 in)
- **Height inside:** 404 mm (15.9 in)
- **Max stack:** 14 bins
- **Height outside:** 330 mm (13 in)
- **Height inside:** 312 mm (12.3 in)
- **Max stack:** 16 bins
- **Height outside:** 220 mm (8.7 in)
- **Height inside:** 202 mm (8 in)
- **Max stack:** 24 bins



## Ports

- AutoStore workstations are called ports. Here bins are presented for picking, replenishing, or other inventory actions. There are various port options available based on functionality and speed.
- Conveyor port. A simple, clear, and functional workstation configuration. A conveyor belt moves the bins to the operators through an opening outside the grid.
- Maximum bin throughput is 240 bins per hour on an elevated level and 180 bins per hour on the floor level
- Carousel port. Enhancing picking performance, the Carousel port operates with three rotating arms, each holding a bin.
- One bin tray is located in the operator's access area and the other two are in the robot's access area, enabling

faster bin presentation without interruptions. Maximum bin throughput is 350 bins/hour

- Swing port. This workstation was designed for picking and putting away from above or below the grid. Performance depends on lift height, e.g., 160 bins/hour with an 8 meters (26.2 feet) bin lift
- Relay port. This workstation consists of a picking module and 3 to 6 buffer modules.
- The robots can deliver bins to the port at any time and transport bins already approved by the operator back into the grid.
- **The advantage:** No robot has to wait, and the articles can be sequenced according to the order. With 6 buffer modules, this port can achieve a throughput of up to 650 bins/hour

## Controller

- The controller is the command center, traffic control unit, and database holder for the entire AutoStore system. Since AutoStore is a closed system, it represents the connection between AutoStore and the Warehouse Management Software (WMS).
- All WMS systems may use XML protocols to communicate with AutoStore via its integrated interface allowing full control of operation logistics and exact analysis features
- The software solutions Planner™ and Router™ enable the system to continuously adapt to external events such as priority orders or cancellations

## Benefits

- **High-density storage**
  - Offering maximum storage density, AutoStore will hold four times as many items as manual storage within the same footprint.
- **Flexible**
  - Customized to fit almost any geometric shape or size, AutoStore can work around various structures (e.g., columns, floor heights, etc.).
- **Adaptable**
  - Install AutoStore on a mezzanine or across several floor levels. The use of tunnels and bridges ensures the entire building is optimized.

## How can AutoStore help me?

### E-commerce order fulfillment

- E-commerce customers are overwhelming warehouses with unprecedented expectations.
- From same-day delivery demands to individualized products and stress-free returns, many e-commerce providers struggle to keep up with customer expectations.
- With this in mind, AutoStore offers several features to help e-commerce warehouses successfully grow while maintaining a competitive edge.
- AutoStore is the fastest order fulfillment system per square foot on the market with the highest storage density
- The flexible and scalable system can be expanded to increase the warehouse capacity or throughput at short notice, without impacting ongoing operations
- A simple touch of a button lets users switch AutoStore workstations between replenishment and order-picking

## Just-in-time supply of production lines

- As customer requirements continue to change at a minute's notice, companies need to keep a steadily growing range of parts in stock but often struggle to provide them as and when needed.
- AutoStore enables a smooth and efficient transition between production supply and assembly lines
- AutoStore secures order-related just-in-time supply of production lines with parts that are stored in the densest possible way

## Micro-fulfillment solutions

- Whether you prefer the backroom of a store, the center of a store, or a small corner of a warehouse, AutoStore is compact enough to fit almost anywhere.
- The modular, highly automated e-commerce fulfillment solution delivers online retail orders quickly and efficiently
- Thanks to AutoStore's high-density storage, the in-store product assortment can be expanded, while providing an engaging customer experience
- AutoStore fulfills express orders the customer is waiting for in less than 5 minutes.
- E-commerce orders can also be consolidated and prepared for last-mile delivery companies or customers to collect from a self-service pick-up point AutoStore is also a proven solution for other areas of application, such as wholesale and third-party logistics. Let's talk!




## We understand you Now let us support you on your journey.

- Navigating today's customer demands and innovative purchasing outlets forces warehouses to rethink internal operations. Companies, regardless if they are an established industry leader or small start-up, will not be able to surpass competitors in today's market without flexible, fast, and high-density storage solutions. AutoStore allows warehouses to expand storage capacity four times without moving warehouses; increase performance ten times without hiring and unlock new order fulfillment potential.
- [Contact a specialist](#)

- [kardex.com](https://www.kardex.com)

---

## Documents / Resources

 <p><small>User Guide</small> Revolutionize your Warehouse Capacity</p> <p><small>kardex</small></p>	<p><a href="#">Kardex AutoStore Implements the World's First Large</a> [pdf] User Guide AutoStore Implements the World s First Large, AutoStore, Implements the World s First Large, World s First Large, First Large, Large</p>
---	--

## References

- [Official Site of Kardex | Kardex Remstar | Kardex Mlog](#)
- [Get in touch](#)
- [User Manual](#)

### Manuals+, Privacy Policy

This website is an independent publication and is neither affiliated with nor endorsed by any of the trademark owners. The "Bluetooth®" word mark and logos are registered trademarks owned by Bluetooth SIG, Inc. The "Wi-Fi®" word mark and logos are registered trademarks owned by the Wi-Fi Alliance. Any use of these marks on this website does not imply any affiliation with or endorsement.