




KARCHER RCF 3 Home Robots Instruction Manual

[Home](#) » [Karcher](#) » KARCHER RCF 3 Home Robots Instruction Manual 

KARCHER RCF 3 Home Robots



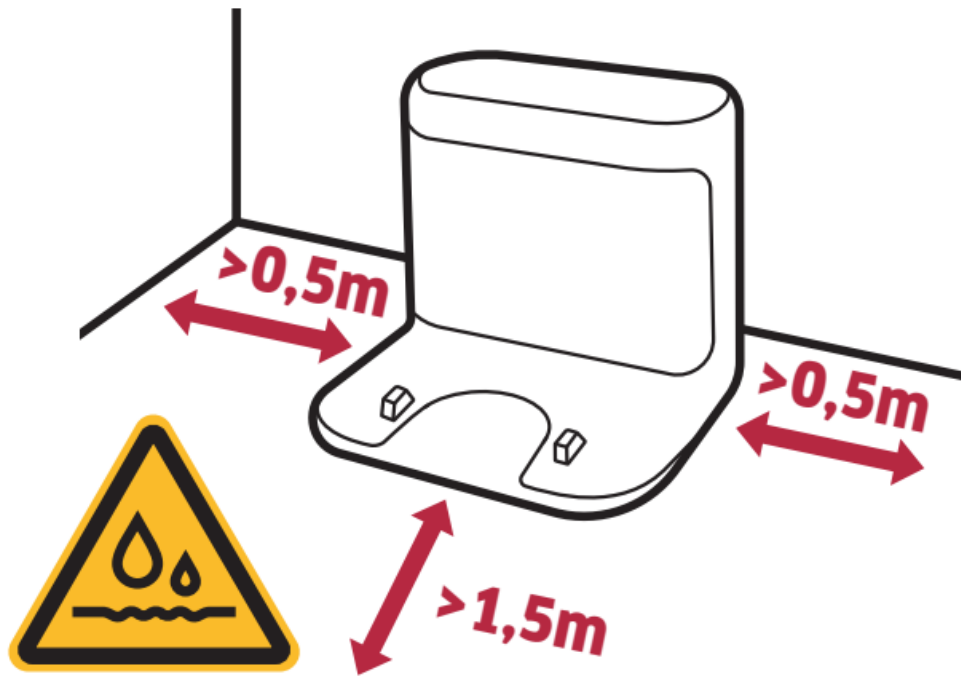
Contents

- [1 Install Device](#)
- [2 Start Cleaning](#)
- [3 Cleaning Of Device](#)
- [4 Display](#)
- [5 Home Robots App](#)
- [6 Operating Instructions](#)
- [7 Documents / Resources](#)
 - [7.1 References](#)
- [8 Related Posts](#)

Install Device

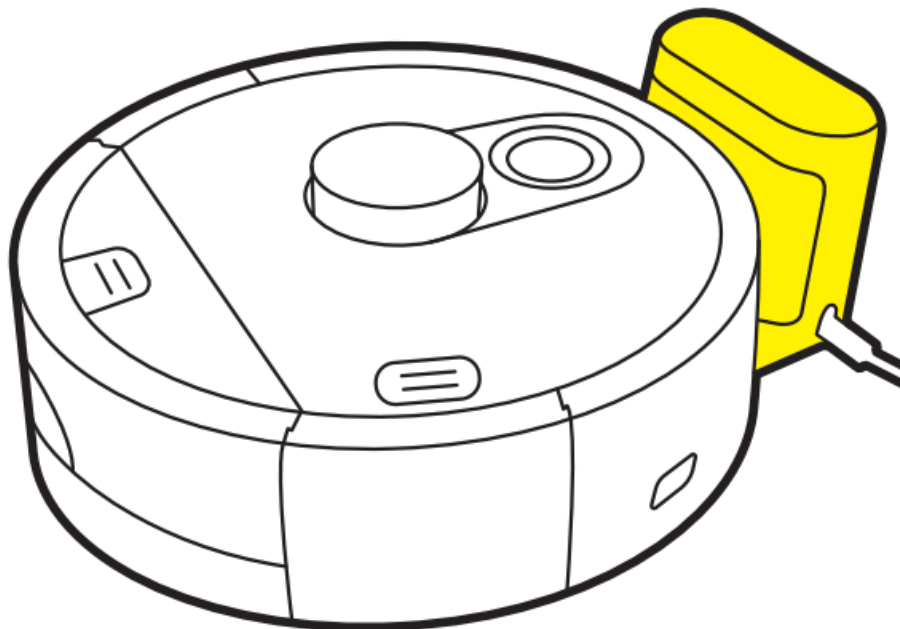
1. Consider correct positioning (Only on water resistant floors!)

1.



2. Place robot on charging station

2.

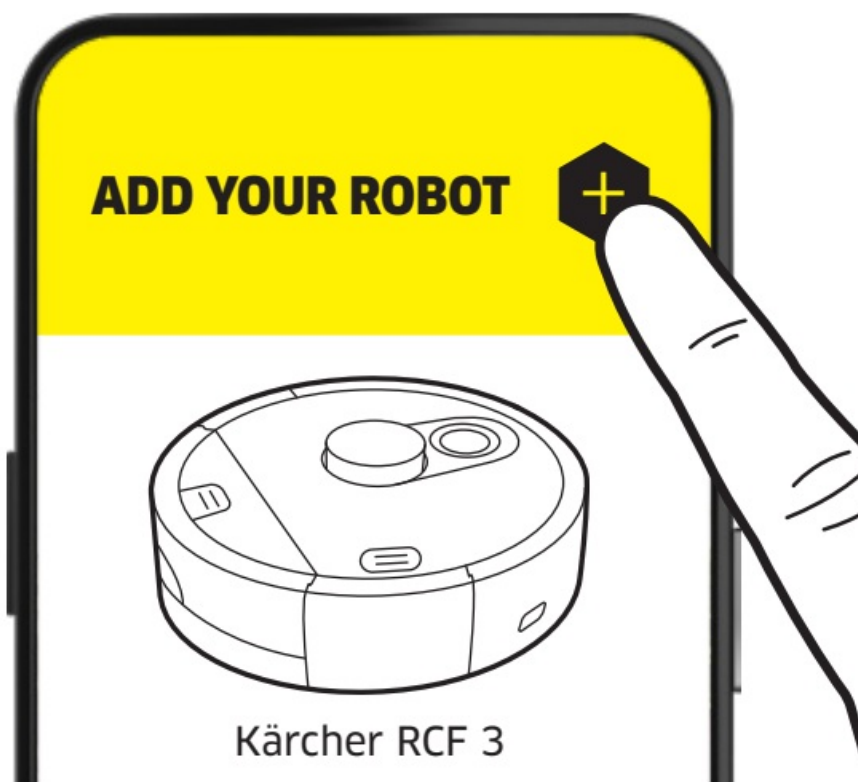


3. Download Home Robots App



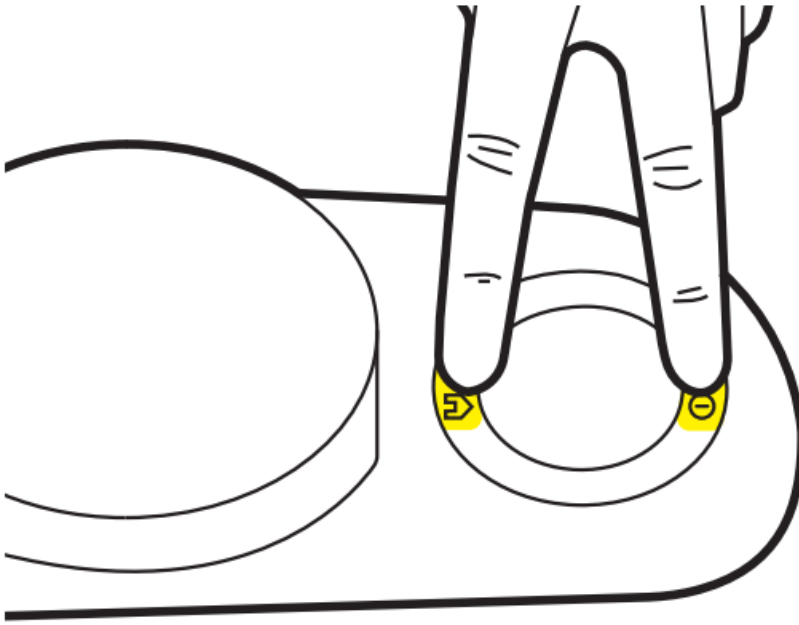
4. Add robot

4.



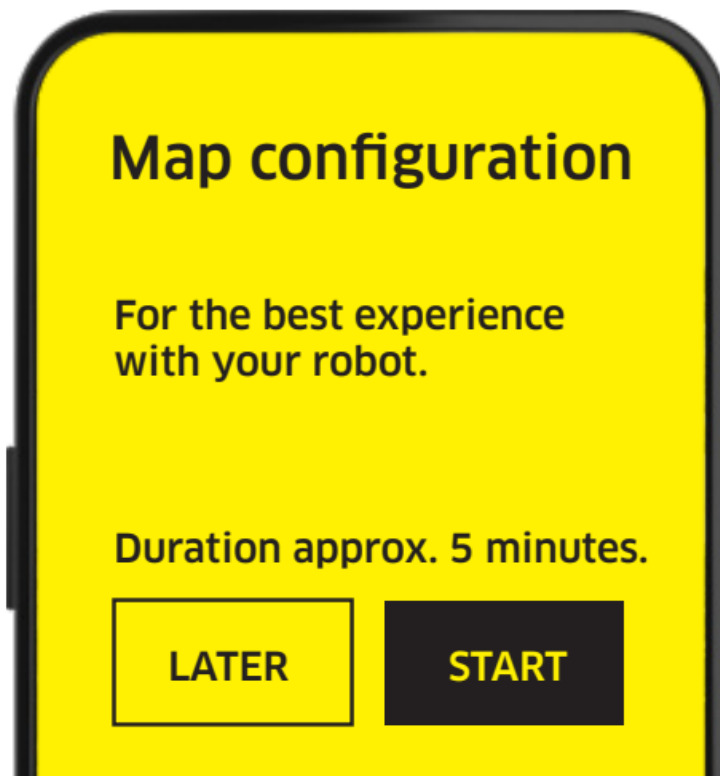
5. Press On/Off and Home to connect to WiFi

5.



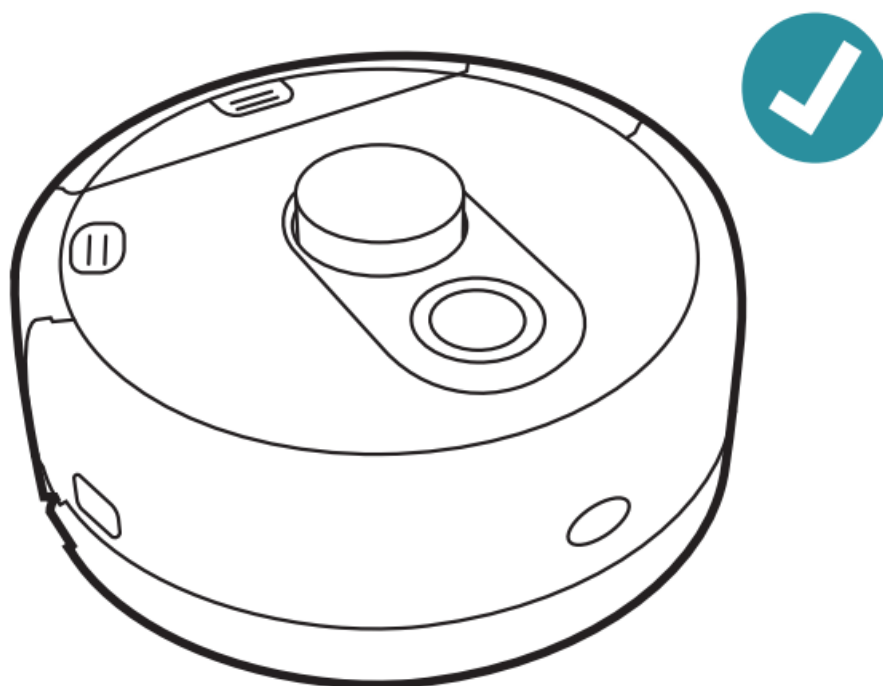
6. Follow the configuration steps in the App

6.



7. Device is now ready for use

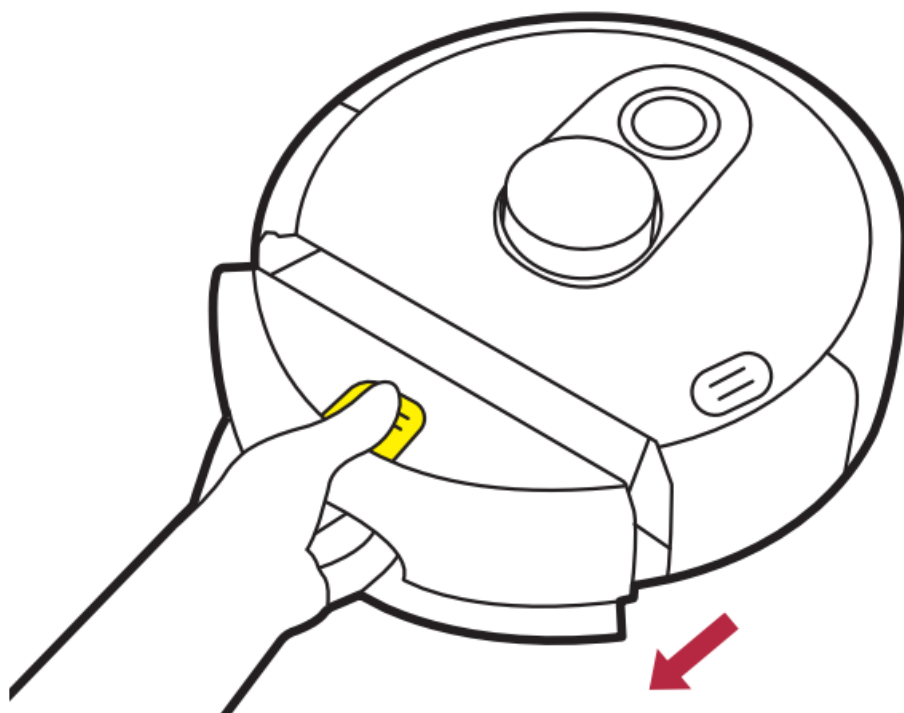
7.



Start Cleaning

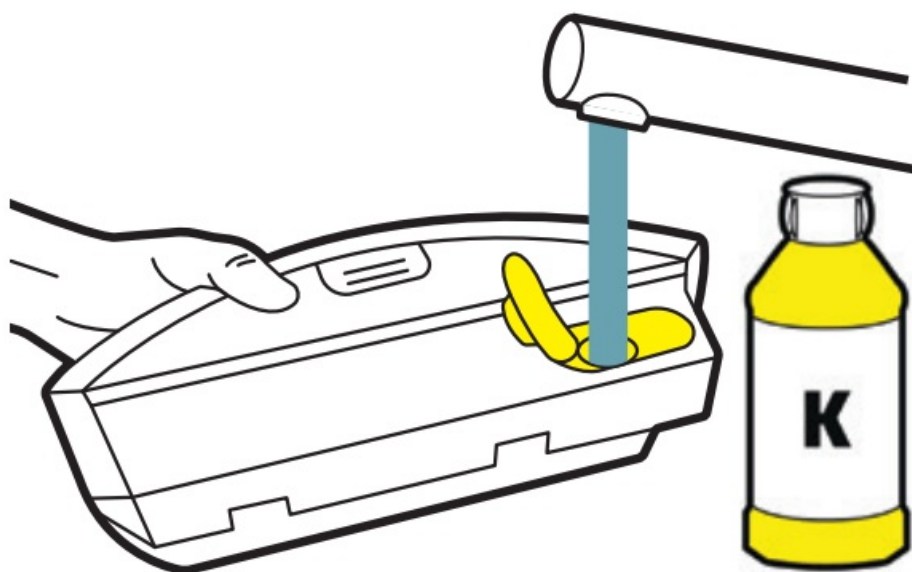
1. Detach tank unit

1.



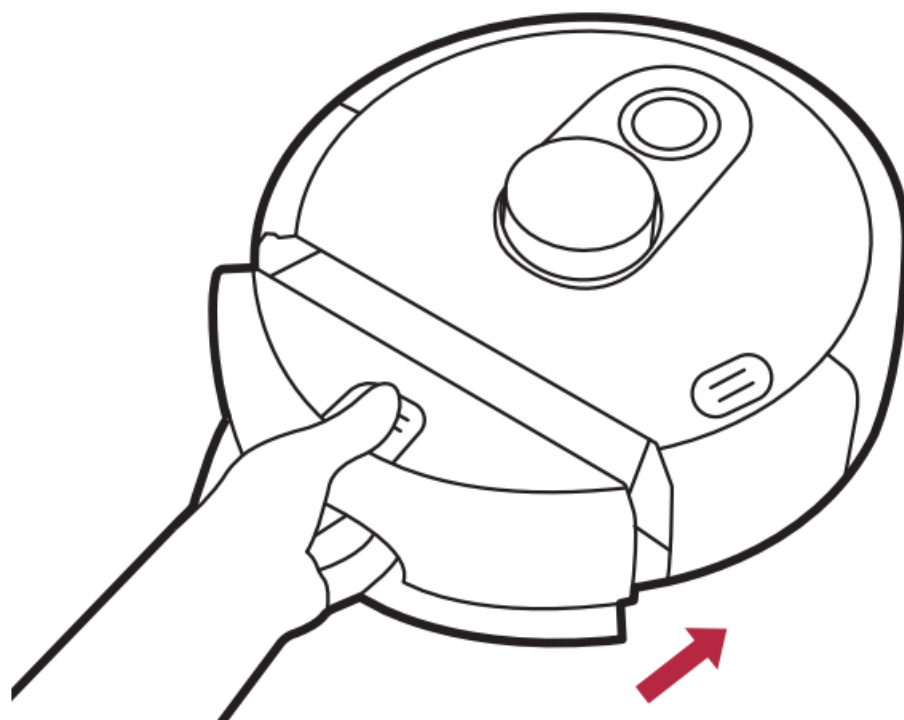
2. Fill fresh water tank with water and detergent

2.



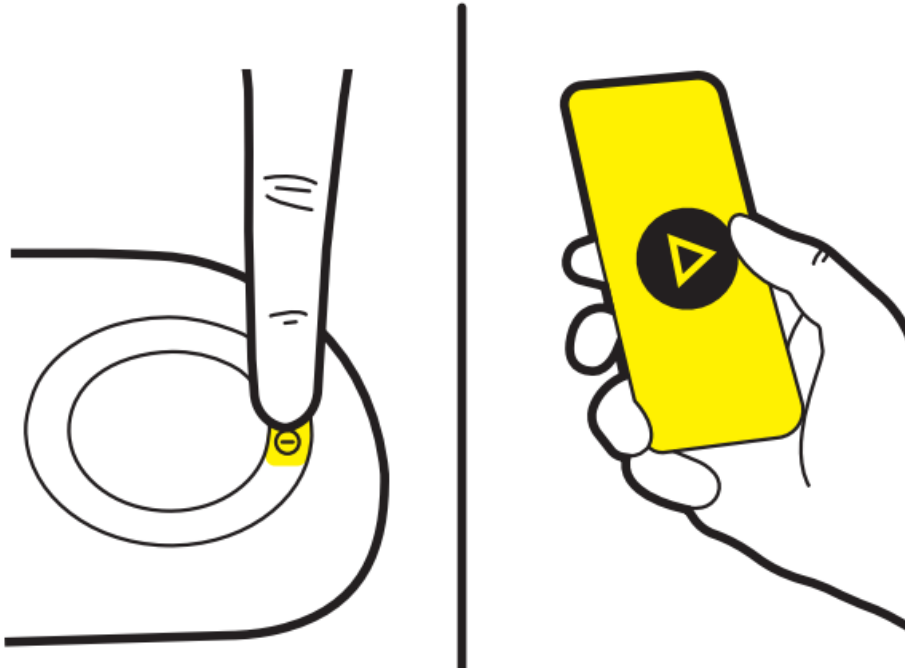
3. Attach tank unit

3.



4. Turn on device

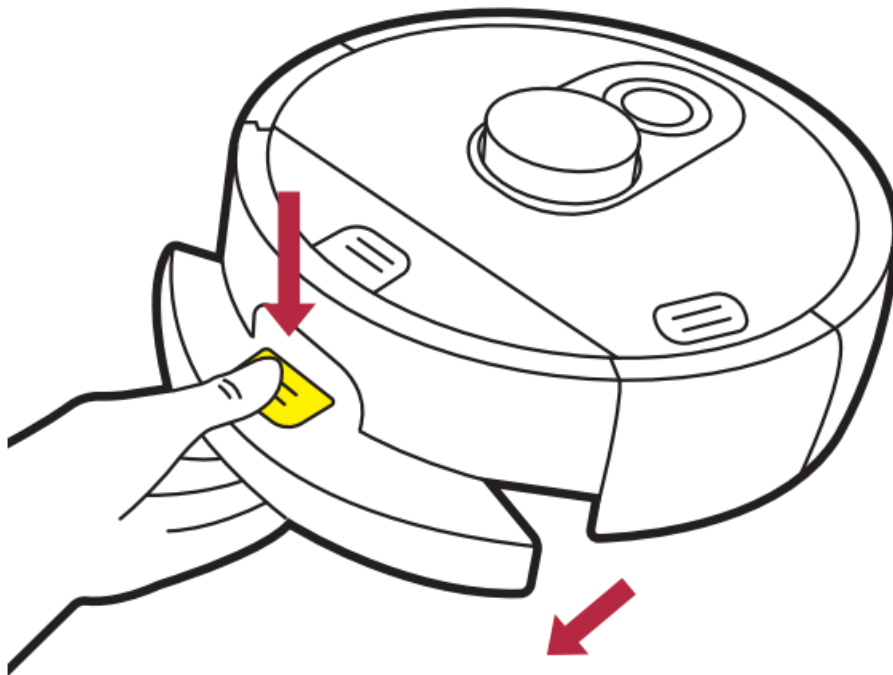
4.



Cleaning Of Device

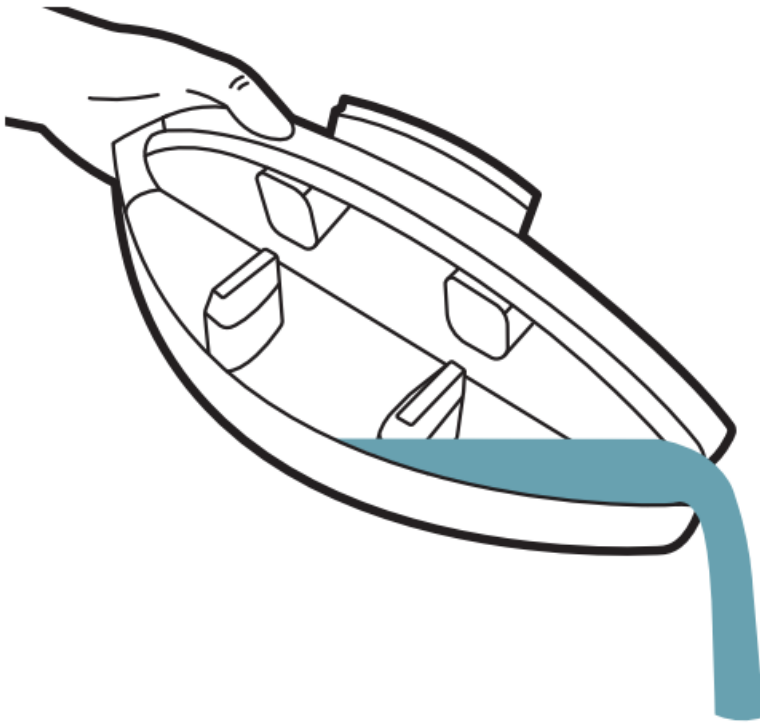
1. Detach dirt water tank

1.



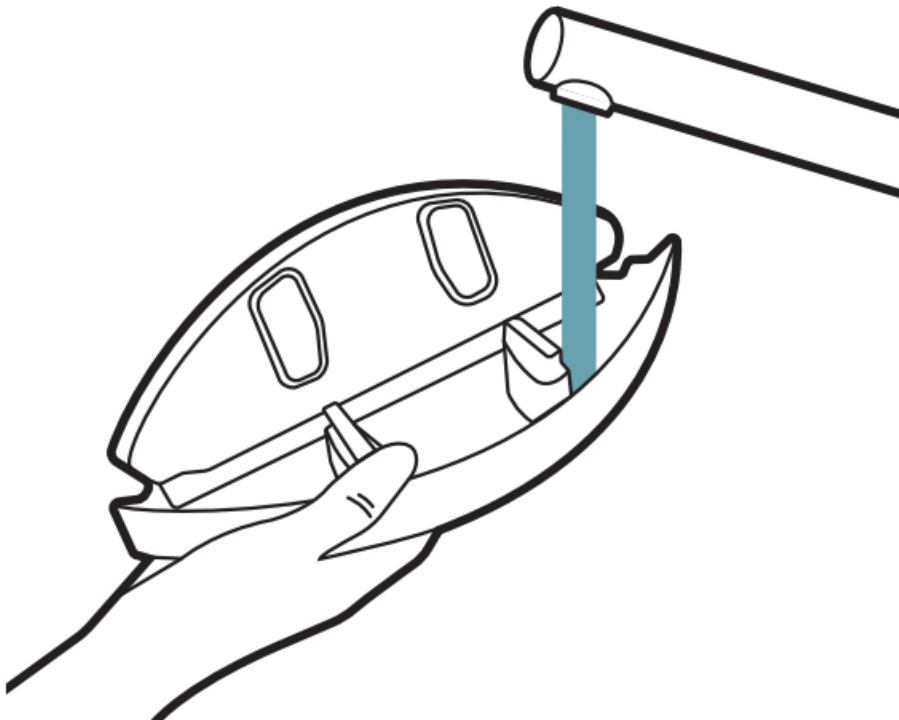
2. Empty dirt water tank

2.



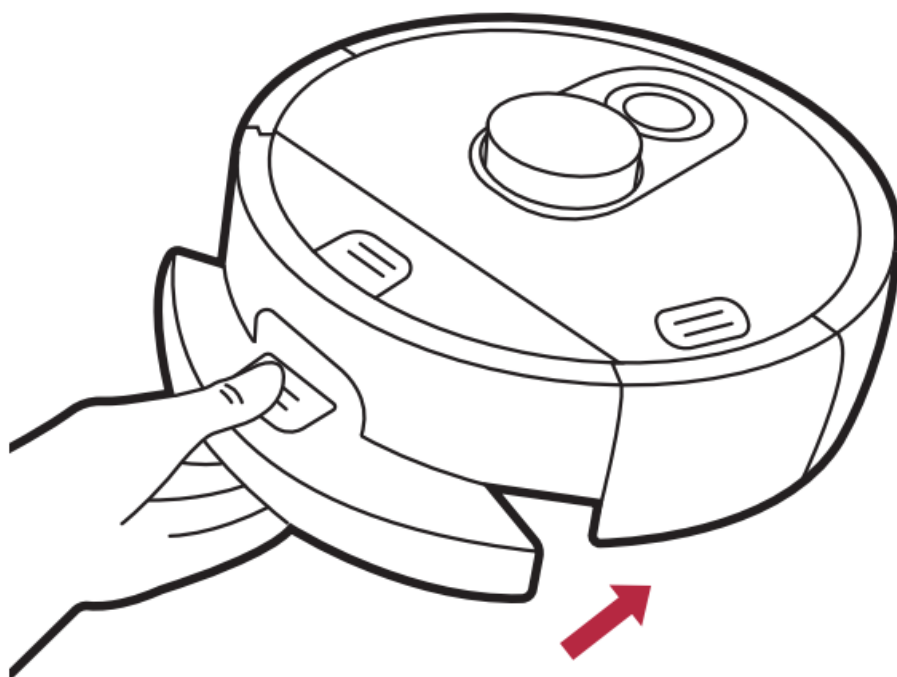
3. Clean dirt water tank

3.



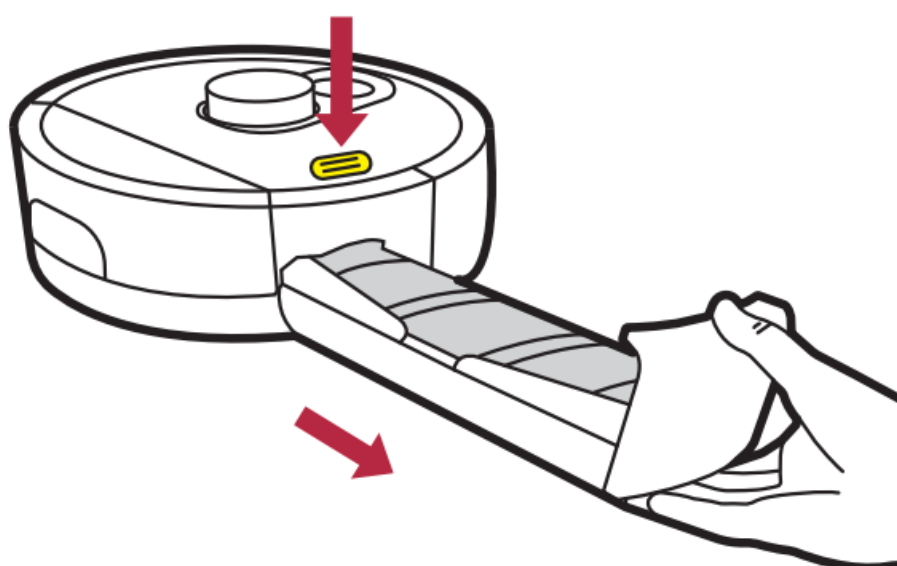
4. Attach dirt water tank

4.



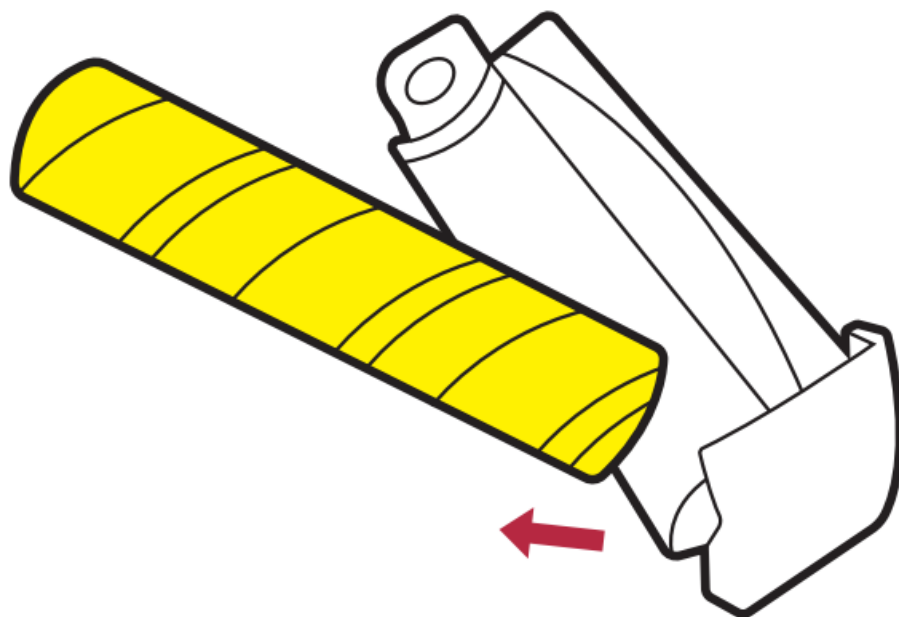
5. Remove roller unit

5.



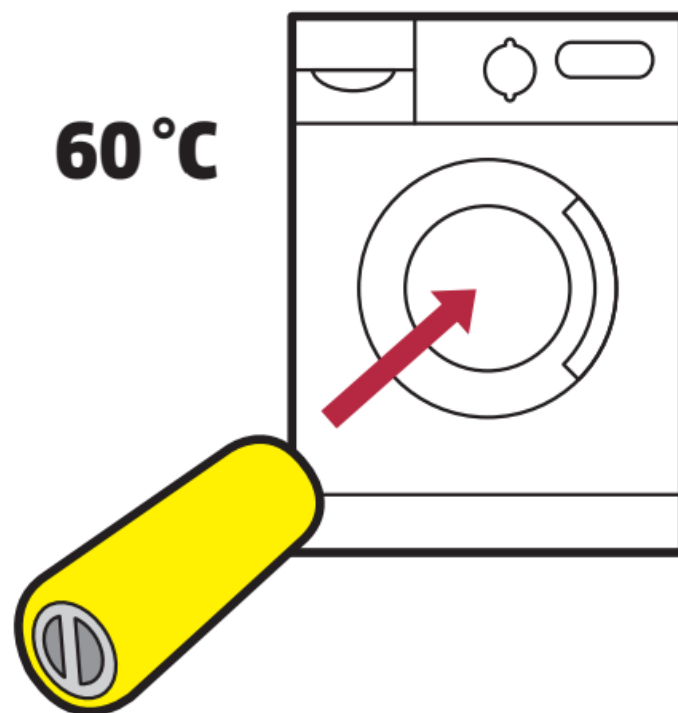
6. Detach roller

6.



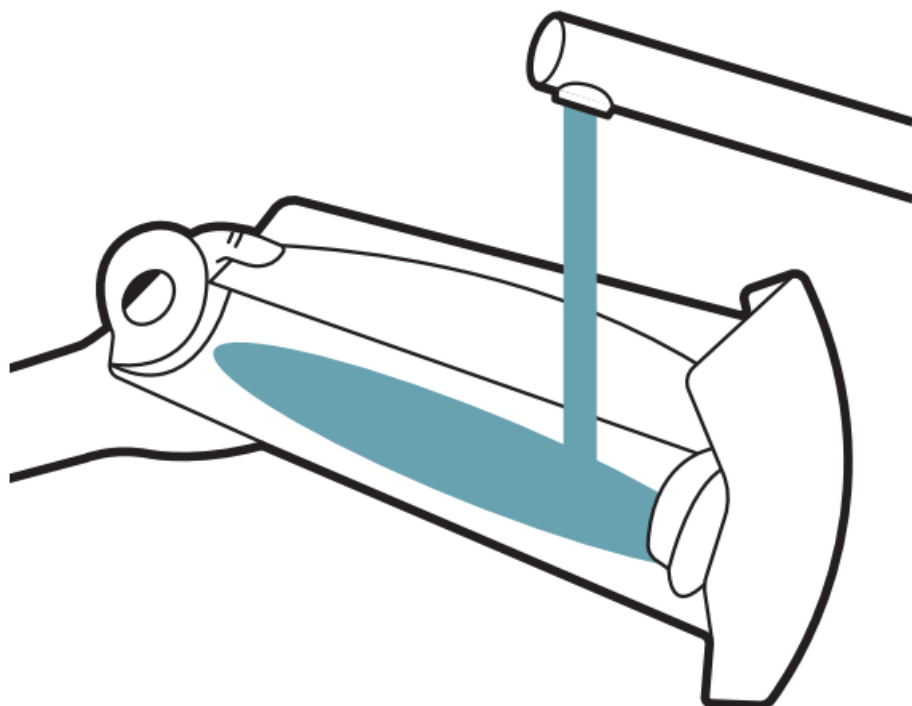
7. Wash roller in washing machine

7.



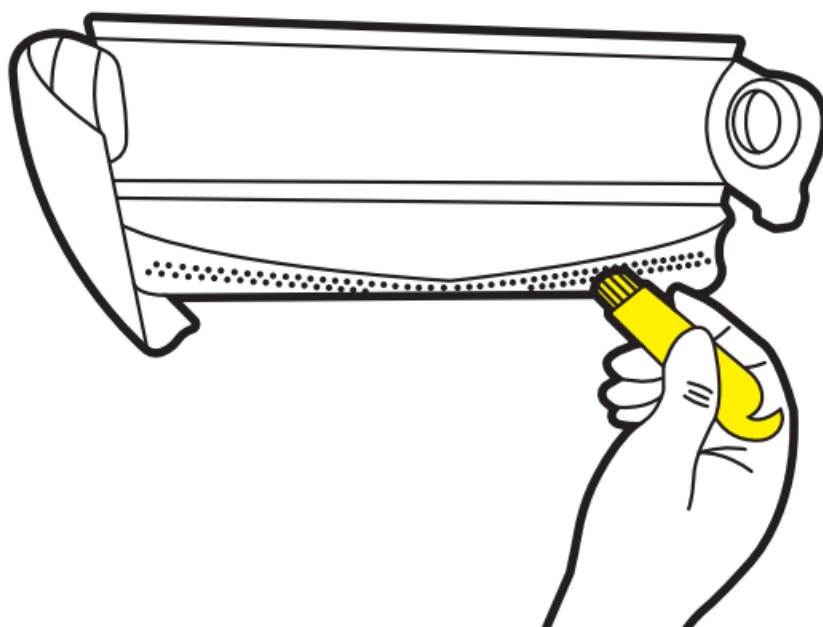
8. Clean roller unit

8.



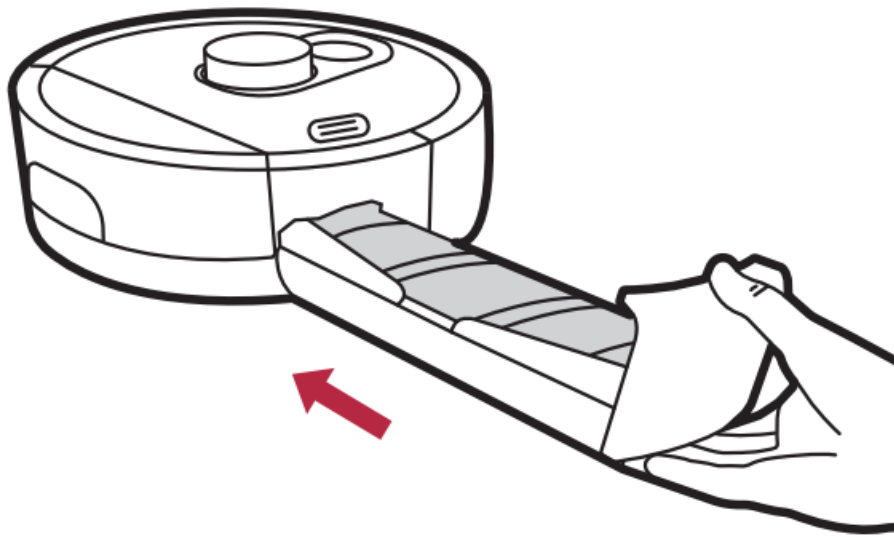
9. Clean hair comb

9.



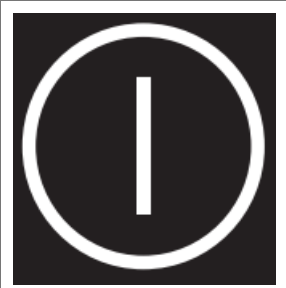

10. Attach roller unit






10.







Display



	<p>On/Off</p>	<p>Press for start, pause, turn off (5 sec) Press together with Home (5 sec) for WiFi connection</p>
	<p>Home</p>	<p>Press to send robot to station Press together with On/Off (5 sec) for WiFi connection</p>

	Robot state	Off: device off or in sleep mode Yellow: Standby Mode Blue: device cleans Red: error indication For more LED signals see user manual
	Battery	Off: device off or in sleep mode Green (breathing): Fully charged (charging) Yellow: 10-29% battery capacity Red blinking:
	WiFi	Off: device off or not connected Blue: Online Blue breath: Reset WiFi / Connecting to WiFi Red blinking: Offline
	Min fresh water	Blue blinking: Fresh water tank empty
	Max dirt water	Red blinking: Dirt water tank full

Home Robots App

Scan for details



www.kaercher.com/int/home-garden/robot-vacuums-and-mops.html

Operating Instructions



Documents / Resources



[KÄRCHER RCF 3 Home Robots](#) [pdf] Instruction Manual
RCF 3 Home Robots, RCF 3, Home Robots, Robots

References

- [User Manual](#)

[Manuals+](#), [Privacy Policy](#)

This website is an independent publication and is neither affiliated with nor endorsed by any of the trademark owners. The "Bluetooth®" word mark and logos are registered trademarks owned by Bluetooth SIG, Inc. The "Wi-Fi®" word mark and logos are registered trademarks owned by the Wi-Fi Alliance. Any use of these marks on this website does not imply any affiliation with or endorsement.