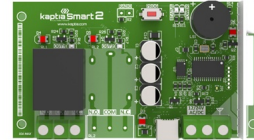




kaptia Smart 2
Specialists In
Remote Controls



kaptia Smart 2 Specialists In Remote Controls User Guide

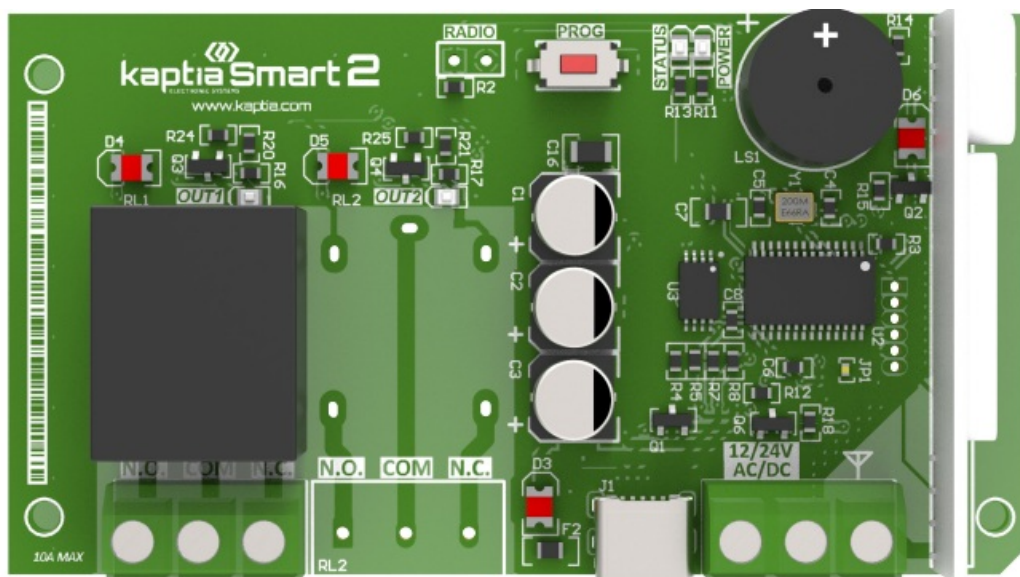
[Home](#) » [kaptia](#) » kaptia Smart 2 Specialists In Remote Controls User Guide 

Contents

- [1 kaptia Smart 2 Specialists In Remote Controls](#)
- [2 Introduction](#)
- [3 Connections](#)
- [4 Operation \(FIX version\)](#)
- [5 COMPLETE MEMORY DELETE](#)
- [6 Technical characteristics](#)
- [7 FCC Warning](#)
- [8 FAQ](#)
- [9 Documents / Resources](#)
 - [9.1 References](#)
- [10 Related Posts](#)



kaptia Smart 2 Specialists In Remote Controls



Introduction

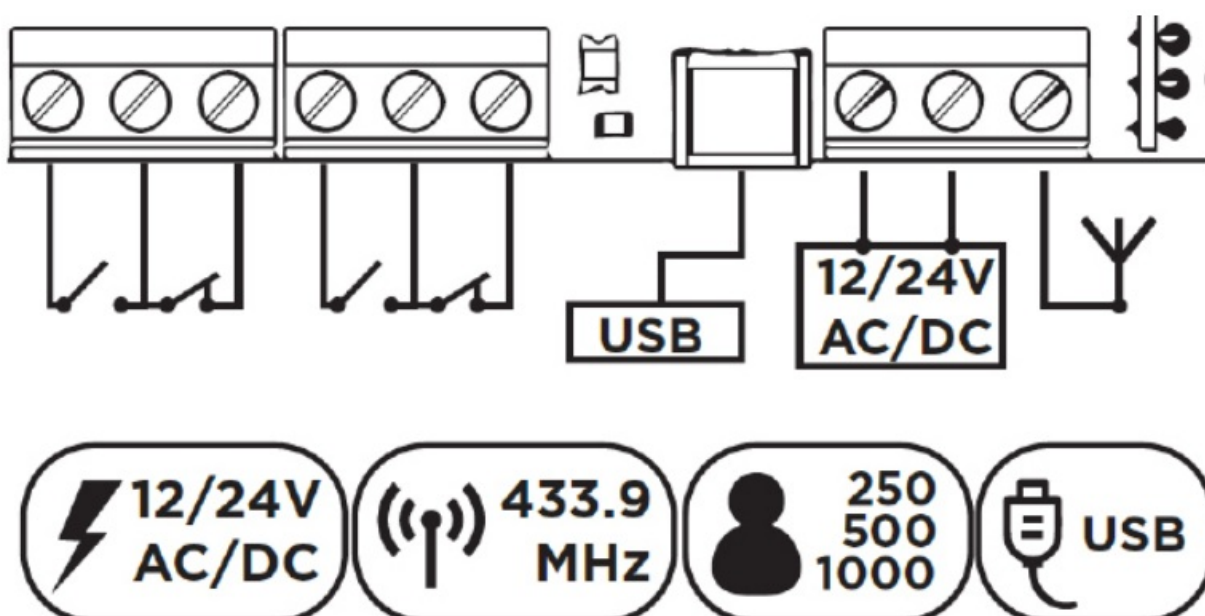
Smart 2 receivers are superheterodyne receivers with a frequency of 433.920 MHz. They can be used to control access to community garages and private homes.

There are 2 versions of this device:

- FIX model
- KODE model

The FIX model (unmanaged operation) allows the use of HCS* type controls. To do this, they will be registered following the procedure described on page 3. The KODE (managed operation) model allows you to manage users through the Key application. * Does not support mutancode type controls

Connections



Operation (FIX version)

REMOTE CONTROL REGISTRATION:

1. Press the button until the receiver beeps and the status LED status lights up.
2. Press the button on the remote control to register until the receiver emits a long beep. If the receiver emits 1 short beep, it means that the transmitter is stored in memory. If it beeps 3 times, it means that the receiver's memory is full and it cannot accept any more transmitters.
3. Wait for it to exit programming mode. The receiver will emit a long beep and the status led will turn off.

COMPLETE MEMORY DELETE

1. Press the button until the receiver beeps 9 or 10 times.
2. The led will turn off.
3. Immediately release and press the button again, keeping it pressed. The receiver will emit a new series of beeps and then several short beeps, indicating that the memory has been erased.
4. A long beep is emitted. At this moment the receiver waits a new transmission.
5. Wait for it to exit programming mode. The receiver will emit a long beep and the status LED will turn off.

NOTE: In the KODE version, the button is disabled by default

Technical characteristics

| | |
|-------------------|--------------------|
| Power: | 12/24V AC/DC |
| Consumption: | <100mA |
| Interface: | USB 2.0 |
| Frequency: | 433.920 MHz |
| Modulation: | OOK |
| Supported system: | Key (KODE version) |
| Updatable: | No |

FCC Warning

The manufacturer is not responsible for any damage caused as a result of inappropriate or improper use of the device. This device complies with the essential requirements set by Directive 99/05/EC. Operation of this device is subject to two conditions:

1. This device may not cause harmful interference, and
2. This device must accept any interference received, including interference that may cause undesired operation.

Changes or modifications not expressly approved by the owner of the compatibility certificate to the standards may invalidate the user's right to the device.

FAQ

- **Q: What is the frequency of Smart 2 receivers?**

A: The frequency of Smart 2 receivers is 433.920 MHz.


- **Q: How to register controls in the FIX model?**

A: Follow the registration procedure described in the manual for the FIX model.

- **Q: How to manage users in the KODE model?**

A: Use the Key application to manage users in the KODE model.

Documents / Resources

| | |
|-----------------------------------------------------------------------------------|--------------------------------------------------------------------------------------------------------------------------------------------------------------------------------------------------------------------------------|
|  | <p>kaptia Smart 2 Specialists In Remote Controls [pdf] User Guide 250, 500, 1000, Smart 2 Specialists In Remote Controls, Smart 2, Specialists In Remote Controls, In Remote Controls, Remote Controls</p> |
|-----------------------------------------------------------------------------------|--------------------------------------------------------------------------------------------------------------------------------------------------------------------------------------------------------------------------------|

References

- [User Manual](#)

[Manuals+](#), [Privacy Policy](#)

This website is an independent publication and is neither affiliated with nor endorsed by any of the trademark owners. The "Bluetooth®" word mark and logos are registered trademarks owned by Bluetooth SIG, Inc. The "Wi-Fi®" word mark and logos are registered trademarks owned by the Wi-Fi Alliance. Any use of these marks on this website does not imply any affiliation with or endorsement.