



# KANOMAX 3888 Handheld Particle Counter 6 Channel User Guide

[Home](#) » [KANOMAX](#) » KANOMAX 3888 Handheld Particle Counter 6 Channel User Guide 



## 3888 Handheld Particle Counter 6 Channel User Guide

### Contents

- [1 3888 Handheld Particle Counter 6 Channel](#)
- [2 Functions](#)
- [3 Measurement](#)
- [4 General Setting](#)
- [5 Documents / Resources](#)
  - [5.1 References](#)
- [6 Related Posts](#)

## 3888 Handheld Particle Counter 6 Channel

### Include

- Main unit
- USB cable
- CD-ROM: USB driver, Remote software, User manual
- Li-ion battery x 2 (installed in the unit)
- Zero filter with tubing
- Inlet protective cap
- AC adapter

## Functions



**Note:** Please do not cover or insert anything into the threaded exhaust port on back of the instrument



### General setting

Opens the menus to set the unit, calendar, data, sound, language and to display instrument information



### Measurement setting

Opens the menu to set the mode, alarm, save, remote and temperature/humidity



### Preset

Opens the menu to set or select up to 18 Presets



### History

Views the historical data or measurements



### Error

Tap the Error key to display an error description

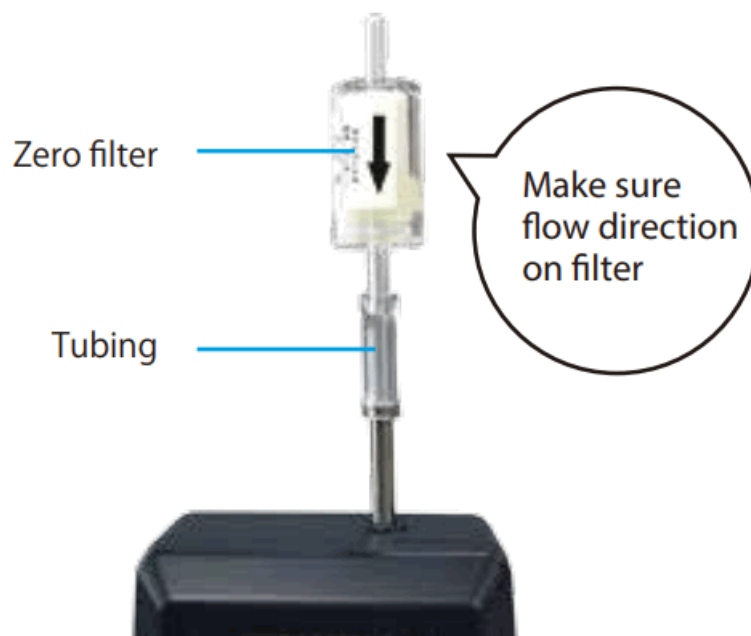


### Differential

Opens the Differential display on the Main screen

### Purging

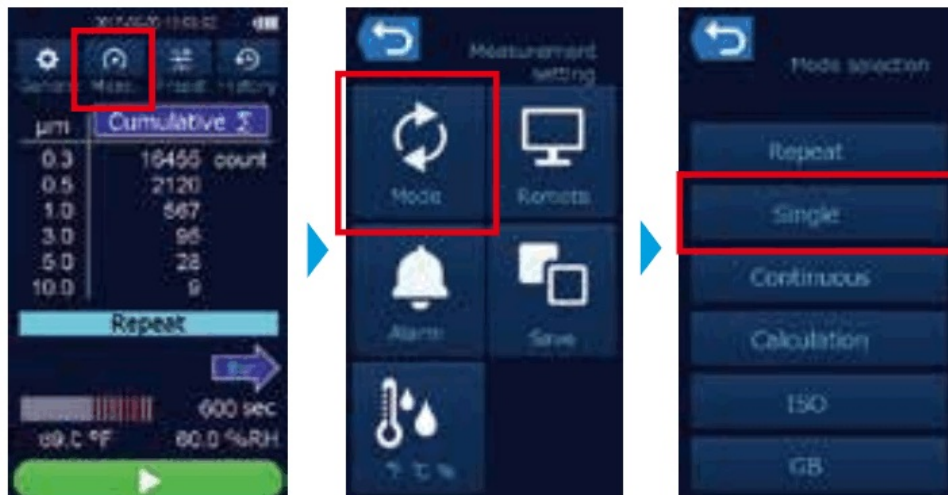
Prior to using the instrument in a clean environment such as cleanrooms, it is recommended to purge the instrument with the provided zero count filter.



1. Attach the provided zero count filter to the inlet
2. Turn the power on and press the Start button. Perform a continuous measurement for approximately 15 minutes until the measuring count value is suitable for 10 seconds or more.
3. After measurement, remove the zero count filter from the inlet

## Measurement

1. Select measurement mode



### Measurement modes

#### Repeat

Repeats the measurement of configured sampling time and cycle

#### Single

Performs a measurement of set sampling time only once

#### Continuous

Continues a measurement until pressing the Stop button

#### Calculation

Calculates the average, standard deviation, maximum, and minimum after measurements

#### ISO

Performs measurements in accordance with ISO 14644

#### GB

Performs measurements in accordance with Chinese National Standard

2. Select measurement mode Set up location and **sampli**



### Location

Sets measurement locations by number Ranges: from 1 to 99

### Sampling time

Sets the sampling time of 1 cycle Ranges: from 6 sec to 99 min 59 sec


### 3. Start measurement



① Go to main screen by pressing Home button

② Press start button to start measurement \* Measurement starts after 10 seconds warm up time

## General Setting

Select  on the Main screen to set the unit, calendar, data, language, and sound



### Unit

Select one of the following 3 options of units to reflect to the readings displayed on the Main screen and Measurement results.



### Calendar

Set the date and time



### Data

Confirms the information and perform operation on the entire measured data



### Language

Selects a language from English, Japanese, Chinese, Spanish



### Sound

Sets the operation sound ON/OFF



### Information

Displays the instrument information Latest calibration date and firmware version



**KANOMAX**

1.888.610.7664



[www.calcert.com](http://www.calcert.com)

[sales@calcert.com](mailto:sales@calcert.com)

## Documents / Resources



**[KANOMAX 3888 Handheld Particle Counter 6 Channel](#)** [pdf] User Guide

3888 Handheld Particle Counter 6 Channel, 3888, Handheld Particle Counter 6 Channel, Particle Counter 6 Channel, Counter 6 Channel

## References

-  [Calcert](http://www.calcert.com)

[Manuals+](#)