



# Kanlux S SWITCH SHUTTER Recessed WIFI Roller Shutter Relay User Manual

[Home](#) » [Kanlux](#) » Kanlux S SWITCH SHUTTER Recessed WIFI Roller Shutter Relay User Manual 

## Contents

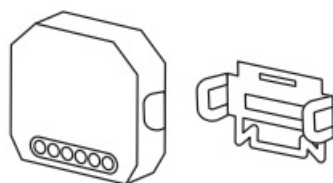
- [1 Kanlux S SWITCH SHUTTER Recessed WIFI Roller Shutter Relay](#)
- [2 WHAT IN THE BOX](#)
- [3 CONNECTION](#)
- [4 QR SCAN](#)
- [5 Documents / Resources](#)
  - [5.1 References](#)
- [6 Related Posts](#)



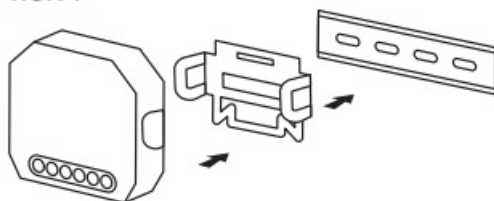
## Kanlux S SWITCH SHUTTER Recessed WIFI Roller Shutter Relay



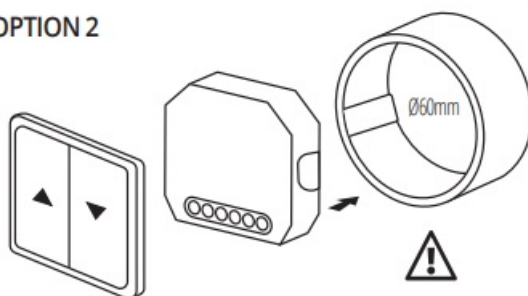
## WHAT IN THE BOX



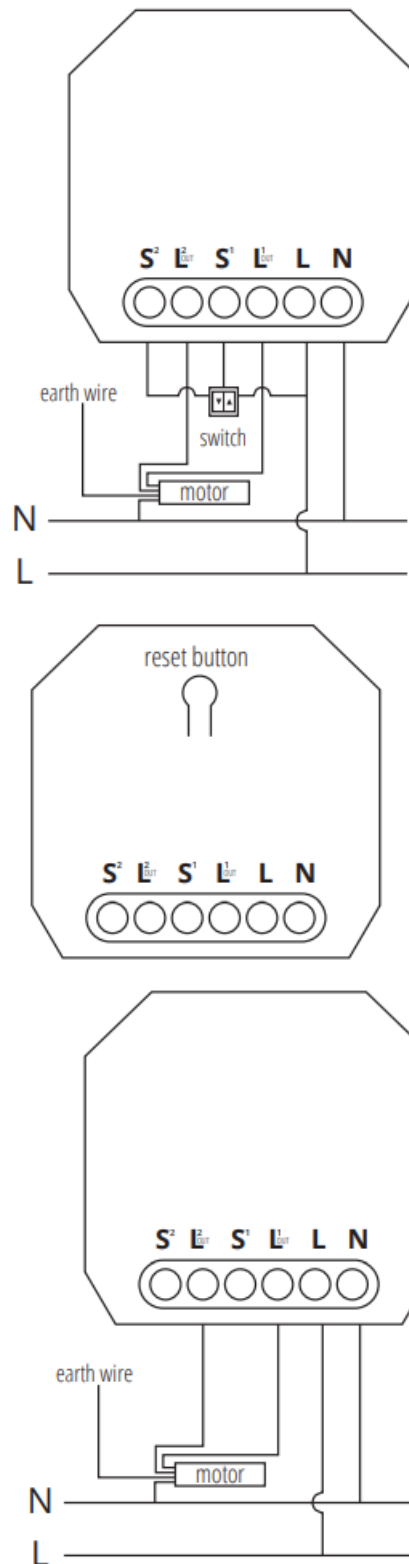
### OPTION 1



### OPTION 2



## CONNECTION



Before getting started. Make sure your phone or tablet is connected to a 2.4GHz WiFi network. This product does not work on a 5GHz WiFi network. To install this product you will need your WiFi network name and WiFi password. Download the SMART LIFE App from the App Store or Google Play Store. The SMART LIFE application can be downloaded and installed by scanning the QR code on the package. Open the App. When using the App for the first time you have to register a new account. After registering you can login to the App. Put the device into pairing/reset mode. Keep the button pressed for a minimum of 7 seconds until you hear a beep. Click "Add device" or "+" in the upper right corner then select "Electrical engineering" and "Switch (BLE+Wi-Fi)", enter the Wi-Fi password. Click "Next". Confirm by pressing "Device is flashing quickly". Now enter the WiFi network name and password and confirm with the "Confirm" button. The socket is being connected. If the connection is successful, the beep goes silent. Now, the new device can be set up, controlled and configured via the app. A detailed description of the program configuration is available for download at [www.kanlux.com](http://www.kanlux.com)

Product for indoor use. Technical changes reserved. Read the manual before mounting. Mounting should be performed by an appropriately qualified person. Any activities to be done with disconnected power supply. Exercise particular caution. Mounting diagram: see pictures. The product can be connected to a supply network which meets energy quality standards as prescribed by law. Check for proper mechanical fastening and connection to electrical power prior to first use. Do not exceed the maximum load power: see pictures. CE declaration of compliance: We, Kanlux SA, hereby declare the product is compliant with the basic requirements and other respective provisions of Directive 2014/53 EC. The declaration of compliance is available in electronic form on the company's website: [www.kanlux.com](http://www.kanlux.com). Kanlux S.A. shall not be responsible for any damage resulting from the failure to follow these instructions. Kanlux SA reserves the right to make changes in the manual – the current version can be downloaded at [www.kanlux.com](http://www.kanlux.com).

WEEE label signifies the necessity of selective collection of waste electric and electronic equipment. The products thus marked must not be disposed of to the standard waste bins together with other types of waste. Such products may be environmentally harmful and require special forms of processing, recovery, recycling and neutralization

## QR SCAN




Scan the QR code to download the APP

- **Wi-Fi:** 2,4GHz
- **Transmitting power:** 16dBm
- **Controlling distance:** max 30m

[www.kanlux.com](http://www.kanlux.com)

## Documents / Resources

	<a href="#">Kanlux S SWITCH SHUTTER Recessed WIFI Roller Shutter Relay</a> [pdf] User Manual S SWITCH SHUTTER, Recessed WIFI Roller Shutter Relay, WIFI Roller Shutter Relay, Roller Shutter Relay, Shutter Relay
---	--

## References

- [Kanlux - wiÄ™cej niÅ¼ Å»wiatÅ.o. - Kanlux](#)