

KAIYI
P743 Dash
Mounted Smart
Display



KAIYI P743 Dash Mounted Smart Display Owner's Manual

[Home](#) » [KAIYI](#) » KAIYI P743 Dash Mounted Smart Display Owner's Manual 

Contents

- [1 KAIYI P743 Dash Mounted Smart Display](#)
- [2 Specifications](#)
- [3 FAQ](#)
- [4 PRODUCT DIAGRAM](#)
- [5 BLUETOOTH CONNECTION](#)
- [6 HOW TO USE](#)
- [7 HOW TO TRANSFER THE SOUND TO CAR SPEAKER](#)
- [8 FCC STATEMENT](#)
- [9 Documents / Resources](#)
 - [9.1 References](#)
- [10 Related Posts](#)

KAIYI

KAIYI P743 Dash Mounted Smart Display



CarPlay and Android Auto Phone mirroring link FM radio Support Bluetooth

Specifications

- CarPlay and Android Auto phone mirroring
- FM radio support
- Bluetooth connectivity
- AUX IN for additional audio input
- Camera input for video display
- USB port for media playback
- Micro SD card slot for expanded storage
- DC-12V port for power supply

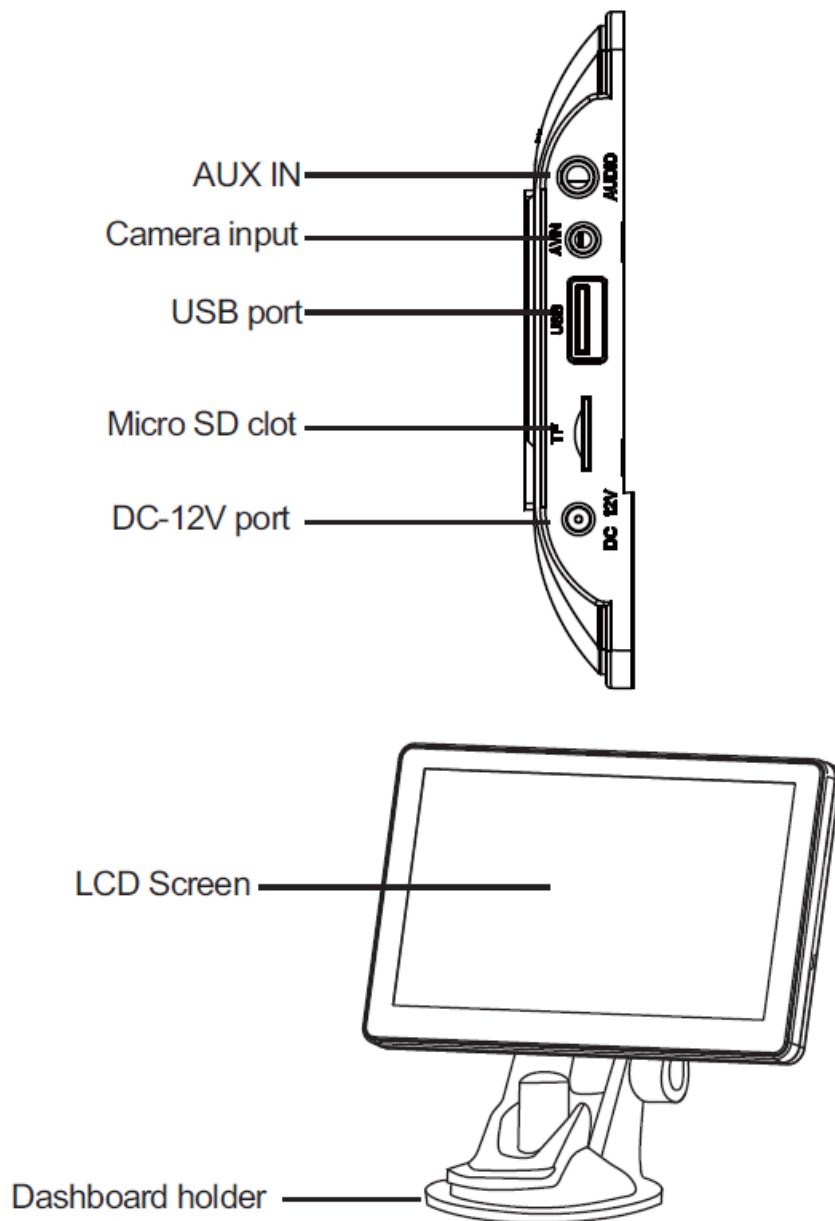
FAQ

Frequently Asked Questions

- **Q:** How do I transfer sound to my car speakers?
 - **A:** You can transfer sound to your car speakers using either the FM radio transmitter or an AUX cable. Make sure to follow the provided instructions to avoid interference with existing radio channels or connections.
- **Q:** What is the warning statement about FCC Rules?
 - **A:** The warning statement indicates that the device complies with FCC regulations regarding interference and operation standards. It must not cause harmful interference and should accept any interference

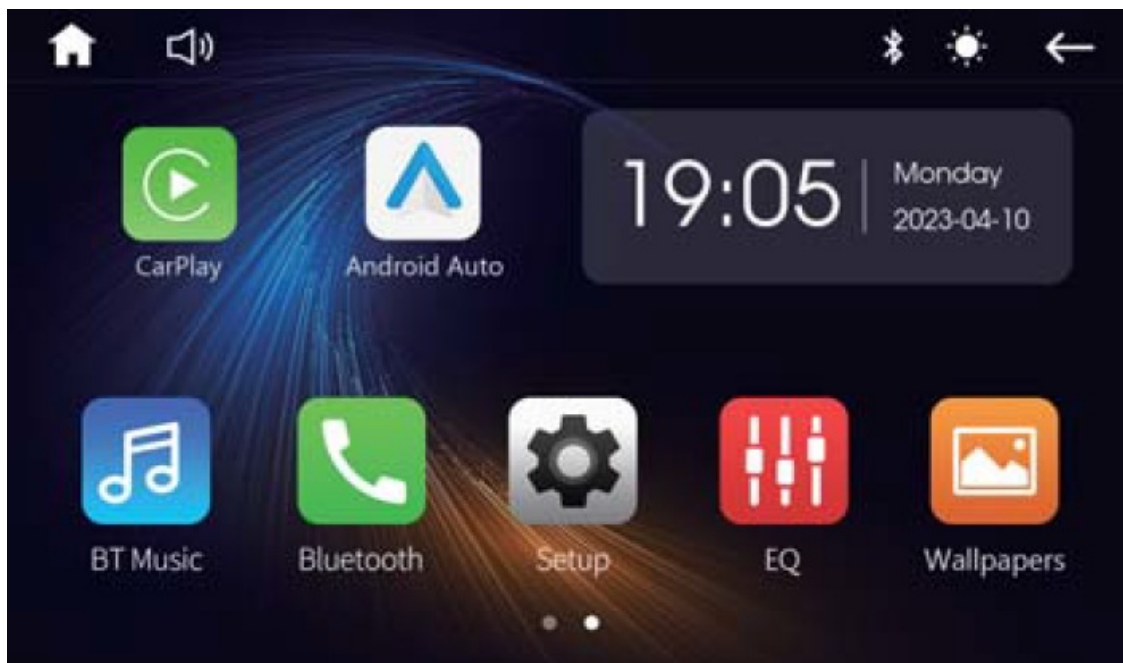
received for proper functioning.

PRODUCT DIAGRAM



BLUETOOTH CONNECTION

- Tap on Bluetooth to see the device Bluetooth name

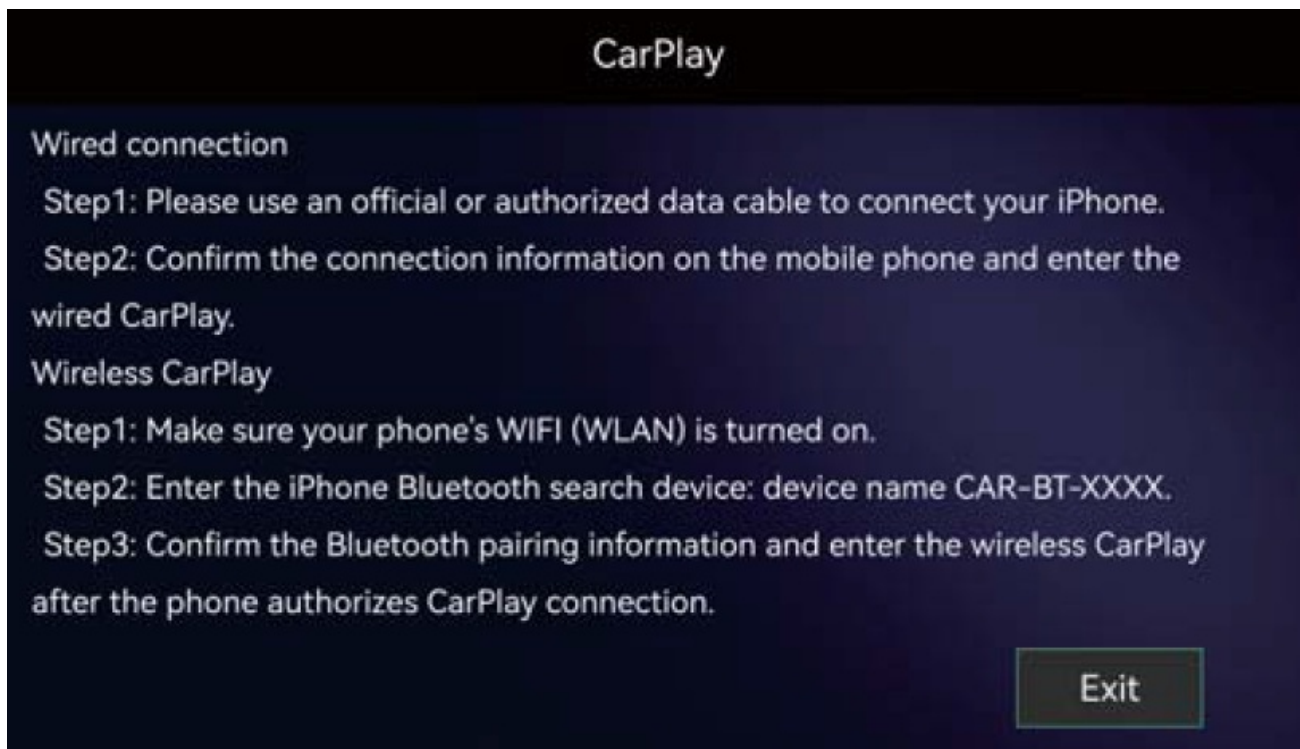


- Search the device Bluetooth name and connect it, phone will pop up Bluetooth Pairing Request tap Pair to successfully connect



HOW TO USE

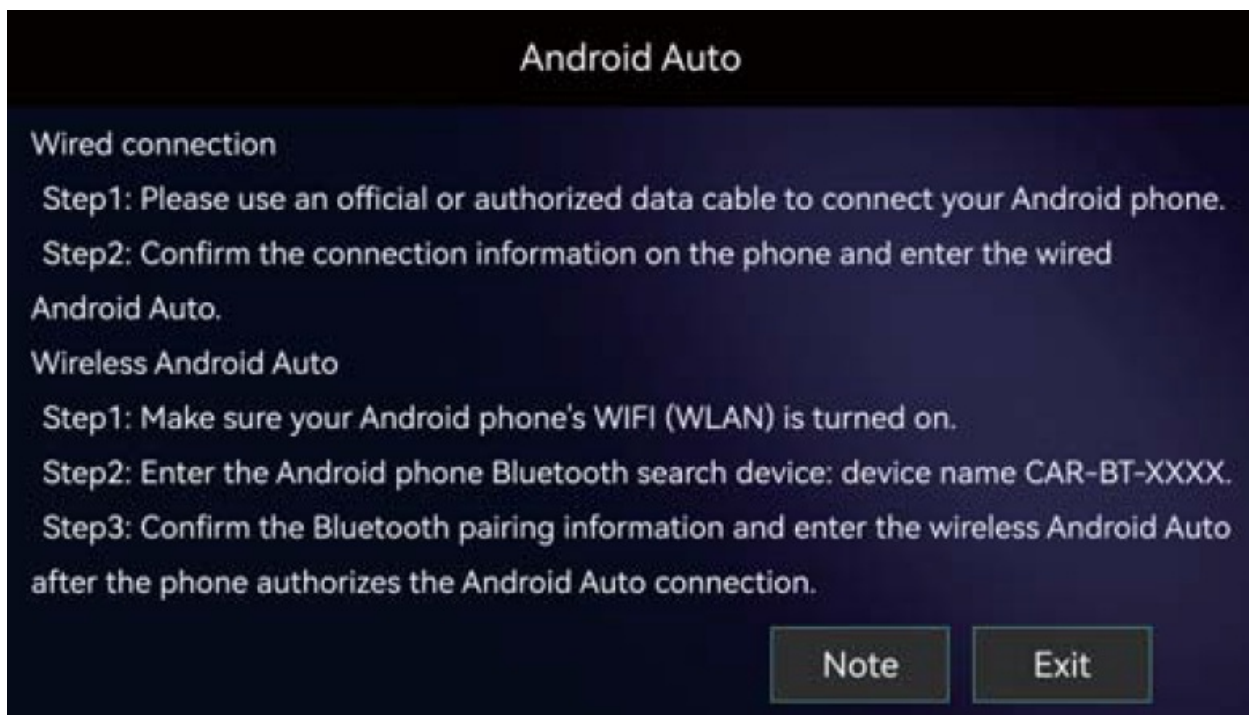
HOW TO USE CARPLAY



Wired connection

- **Step 1:** Please use an official or authorized data cable to connect your iPhone.
- **Step 2:** Confirm the connection information on the mobile phone and enter the wired CarPlay.

HOW TO USE ANDROID AUTO



Wired connection

- **Step 1:** Please use an official or authorized data cable to connect your Android phone. Please use an official or authorized data cable to connect your Android

- **Step 2:** Confirm the connection information on the phone and enter the wired Android Auto.

Wireless Android Auto

- **Step 1:** Make sure your Android phone's WIFI (WLAN) is turned on.
- **Step 2:** Enter the Android phone Bluetooth search device: device name CAR-BT-XXXX.
- **Step 3:** Confirm the Bluetooth pairing information and enter the wireless Android Auto after the phone authorizes the Android Auto connection.

Note

- If your Android phone does not have the Android Auto APP or the Android version is earlier than Android 10.0, you need to download the Android Auto APP from the app market to ensure that the connection is successful.

HOW TO USE AIRPLAY



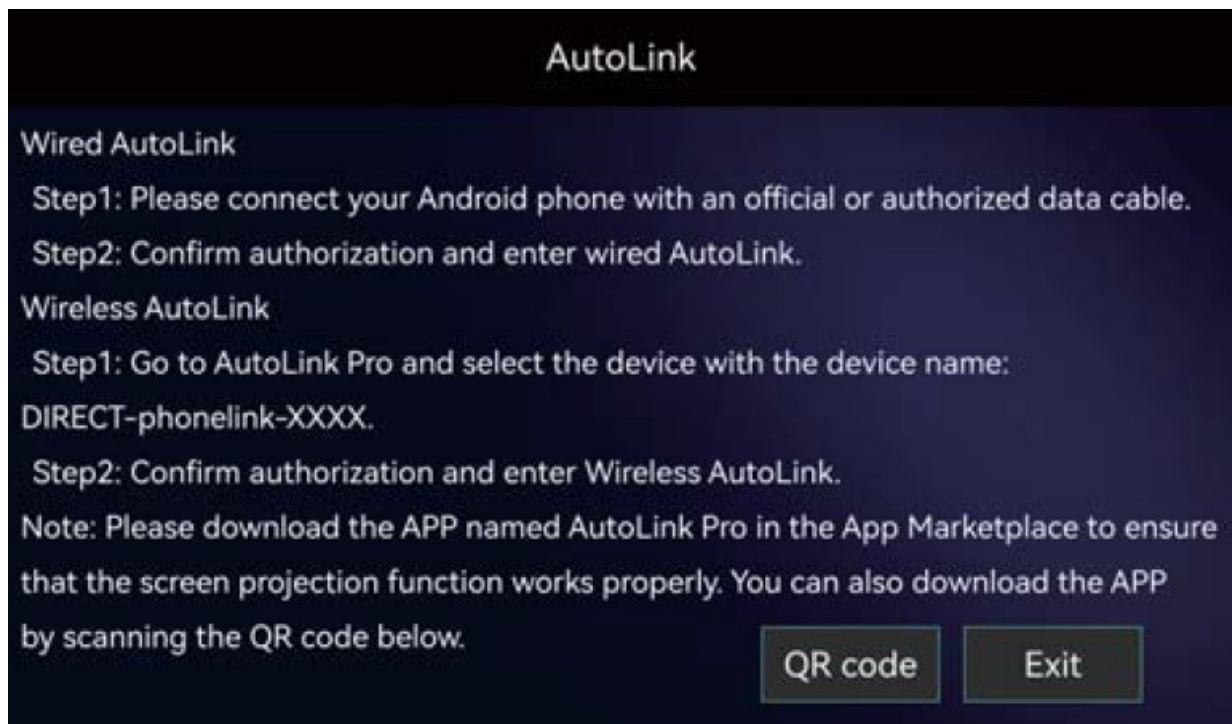
Wired ISO Mirroring

- **Step 1:** Please connect your iPhone with an official or authorized data cable. Step 2: Confirm authorization and enter wired ISO Mirroring.

Wireless ISO Mirroring

- **Step 1:** Use the WIFI of your iPhone to search for the device named: DIRECT-phonelink-XXXX and enter the connection password: 88888888 to connect.
- **Step 2:** Enter the Car-AirPlay interface of iPhone and select the device for screen projection.

HOW TO USE PHONE LINK



Wired AutoLink

- **Step 1:** Please connect your Android phone with an official or authorized data cable.
- **Step 2:** Confirm authorization and enter wired AutoLink.

Wireless AutoLink

- **Step 1:** Go to AutoLink Pro and select the device with the device name: DIRECT-phonelink-XXXX.
- **Step 2:** Confirm authorization and enter Wireless AutoLink.

Note: Please download the APP named AutoLink Pro in the App Marketplace to ensure that the screen projection function works properly. You can also download the APP by scanning the QR code below.

HOW TO TRANSFER THE SOUND TO CAR SPEAKER



This unit has built-in speaker but if you want louder sound, you can transfer it to your car's speakers:

1. By FM radio transmitter – set the same FM radio channel on the unit and your car's radio (please avoid using the channel to be occupied by the FM station)
2. By AUX cable -plug the aux cable into the unit audio port and your car's original aux port if your car has.

FCC STATEMENT

This device complies with part 15 of the FCC Rules. Operation is subject to the following two conditions:

1. This device may not cause harmful interference
2. This device must accept any interference received, including interference that may cause undesired operation.

Any Changes or modifications not expressly approved by the party responsible for compliance could void the user's authority to operate the equipment.

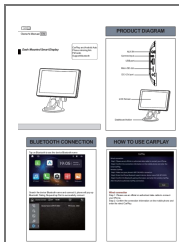
Note: This equipment has been tested and found to comply with the limits for a Class B digital device, pursuant to part 15 of the FCC Rules. These limits are designed to provide reasonable protection against harmful interference in a residential installation. This equipment generates uses and can radiate radio frequency energy and, if not installed and used in accordance with the instructions, may cause harmful interference to radio communications. However, there is no guarantee that interference will not occur in a particular installation. If this equipment does cause harmful interference to radio or television reception, which can be determined by turning the equipment off and on, the user is encouraged to try to correct the interference by one or more of the following measures:

- Reorient or relocate the receiving antenna.
- Increase the separation between the equipment and receiver.
- Connect the equipment into an outlet on a circuit different from that to which the receiver is connected.
- Consult the dealer or an experienced radio/TV technician for help.

This equipment complies with FCC radiation exposure limits set forth for an uncontrolled environment. This

equipment should be installed and operated with minimum distance 20cm between the radiator & your body.

Documents / Resources



[KAIYI P743 Dash Mounted Smart Display](#) [pdf] Owner's Manual
P743, P743 Dash Mounted Smart Display, Dash Mounted Smart Display, Mounted Smart Display, Smart Display, Display

References

- [User Manual](#)

[Manuals+.](#) [Privacy Policy](#)

This website is an independent publication and is neither affiliated with nor endorsed by any of the trademark owners. The "Bluetooth®" word mark and logos are registered trademarks owned by Bluetooth SIG, Inc. The "Wi-Fi®" word mark and logos are registered trademarks owned by the Wi-Fi Alliance. Any use of these marks on this website does not imply any affiliation with or endorsement.